

# **FUJITSU Software**

## **ServerView Resource Orchestrator**

### **Cloud Edition V3.4.0**

A decorative horizontal band with a red-to-dark-red gradient. It features abstract, glowing white and red lines that swirl and intersect, creating a sense of motion and energy.

## **Quick Start Guide**

Windows/Linux

J2X1-7622-09ENZ0(03)  
October 2020

# Preface

---

## Purpose of This Document

This manual explains the flow of installation of FUJITSU Software ServerView Resource Orchestrator Cloud Edition (hereinafter Resource Orchestrator).

## Intended Readers

This manual is written for people who will install, operate, and maintain systems using Resource Orchestrator.

## Structure of This Document

This manual is composed as follows:

### [Chapter 1 Resource Orchestrator Setup Procedure](#)

Explains the flow of Resource Orchestrator setup.

### [Chapter 2 List of Functions Provided by the ROR Console](#)

Explains the functions provided by the ROR console.

## Web Site URLs

URLs provided as reference sources within the main text are correct as of October 2020.

## Document Conventions

The notation in this manual conforms to the following conventions.

- When there is different information for the different versions of Resource Orchestrator, it is indicated as follows.

[All Editions]	Sections relevant for all editions
[Cloud Edition]	Sections related to Cloud Edition
[Virtual Edition]	Sections related to Virtual Edition

- When using Resource Orchestrator and the functions necessary differ due to the necessary basic software (OS), it is indicated as follows:

### **[Windows Manager]**

Sections related to Windows manager

### **[Linux Manager]**

Sections related to Linux manager

### **[Windows]**

Sections related to Windows

### **[Linux]**

Sections related to Linux

### **[Red Hat Enterprise Linux]**

Sections related to Red Hat Enterprise Linux

### **[Solaris]**

Sections related to Solaris

### **[VMware]**

Sections related to VMware

### **[Horizon View]**

Sections related to VMware Horizon View

## **[Hyper-V]**

Sections related to Hyper-V

## **[Xen]**

Sections related to RHEL5-Xen

## **[KVM]**

Sections related to RHEL-KVM

## **[Solaris Zones]**

Sections related to Solaris Zones (Solaris 10) and Solaris Zones (Solaris 11)

### **[Solaris Zones (Solaris 10)]**

Sections related to Solaris Zones with Solaris 10 VM hosts

### **[Solaris Zones (Solaris 11)]**

Sections related to Solaris Zones with Solaris 11 VM hosts

## **[OVM for x86]**

Sections related to Oracle VM Server for x86 2.2 and Oracle VM Server for x86 3.x

### **[OVM for x86 2.2]**

Sections related to Oracle VM Server for x86 2.2

### **[OVM for x86 3.x]**

Sections related to Oracle VM Server for x86 3.2 and Oracle VM Server for x86 3.3

## **[OVM for SPARC]**

Sections related to Oracle VM Server for SPARC

## **[Citrix Xen]**

Sections related to Citrix XenServer

## **[Physical Servers]**

Sections related to physical servers

## **[Trend Micro OfficeScan]**

Sections related to Trend Micro OfficeScan

## **[Symantec]**

Sections related to Symantec Endpoint Protection

## **[McAfee]**

Sections related to McAfee ePolicy Orchestrator

- Unless specified otherwise, the blade servers mentioned in this manual refer to PRIMERGY BX servers.
- Oracle Solaris may also be indicated as Solaris, Solaris Operating System, or Solaris OS.
- Oracle Solaris Zones may also be indicated as Solaris Containers or Solaris Container.
- Oracle VM Server for x86 may also be indicated as Oracle VM.
- In Resource Orchestrator, the following servers are referred to as SPARC Enterprise.
  - SPARC Enterprise M3000/M4000/M5000/M8000/M9000
  - SPARC Enterprise T5120/T5140/T5220/T5240/T5440
- In Resource Orchestrator, the following servers are referred to as SPARC M12.
  - SPARC M12-1/M12-2/M12-2S
- In Resource Orchestrator, the following servers are referred to as SPARC M10.

- SPARC M10-1/M10-4/M10-4S
- Fujitsu SPARC M12 is the product name used for SPARC M12 when they are sold outside Japan.
- Fujitsu M10 is the product name used for SPARC M10 when they are sold outside Japan.
- In this manual, Fujitsu SPARC M12 is referred to as SPARC M12.
- In this manual, Fujitsu M10 is referred to as SPARC M10.
- In this manual, Fujitsu SPARC M12 and Fujitsu M10 are collectively referred to as SPARC M10/M12.
- In Resource Orchestrator, the following software is referred to as GLS.
  - PRIMECLUSTER GLS 4.4 or earlier
- In Resource Orchestrator, the following software is referred to as GDS.
  - PRIMECLUSTER GDS 4.4 or earlier
- References and character strings or values requiring emphasis are indicated using double quotes ( " ).
- GUI items are shown enclosed by brackets ( [ ] ).
- The order of selecting menus is indicated using [ ]-[ ] .
- Text to be entered by the user is indicated using bold text.
- Variables are indicated using italic text and underscores.
- The ellipses ("...") in menu names, indicating settings and operation window startup, are not shown.
- The ">" used in Windows is included in usage examples. When using Linux, read ">" as meaning "#".
- When using Resource Orchestrator on Windows 8 and Windows Server 2012, please note the following. When OS operations are explained in this manual, the examples assume OSs up to Windows 7 and Windows Server 2008. When using Resource Orchestrator on Windows 8 or Windows Server 2012, take explanations regarding the [Start] menu as indicating the [Apps] screen. The [Apps] screen can be displayed by right-clicking on the [Start] screen and then right-clicking [All apps].
- When using Resource Orchestrator on Windows 8.1 and Windows Server 2012 R2, please note the following. When OS operations are explained in this manual, the examples assume OSs up to Windows 7 and Windows Server 2008. When using Resource Orchestrator on Windows 8.1 or Windows Server 2012 R2, take explanations regarding the [Start] menu as indicating the [Apps] screen. The [Apps] screen can be displayed by swiping the [Start] screen from bottom to top, or clicking the downward facing arrow on the lower-left of the [Start] screen.

## Menus in the ROR console

Operations on the ROR console can be performed using either the menu bar or pop-up menus.

By convention, procedures described in this manual only refer to pop-up menus.

## Regarding Installation Folder Paths

The installation folder path may be given as C:\Fujitsu\ROR in this manual.

Replace it as shown below.

[Virtual Edition]

- When using Windows 64-bit (x64)  
C:\Program Files (x86)\Resource Orchestrator
- When using Windows 32-bit (x86)  
C:\Program Files\Resource Orchestrator

[Cloud Edition]

C:\Program Files (x86)\Resource Orchestrator

## Command Examples

The paths used in command examples may be abbreviated. When using commands, execute them using the paths in the "Name" column in the "Reference Guide (Command) VE" and the "Reference Guide (Command/XML) CE".

## Abbreviations

The following abbreviations are use in this manual.

### Category

#### Abbreviation

- Products

### Windows

#### Windows

- Microsoft(R) Windows Server(R) 2012 Standard
- Microsoft(R) Windows Server(R) 2012 Datacenter
- Microsoft(R) Windows Server(R) 2012 R2 Essentials
- Microsoft(R) Windows Server(R) 2012 R2 Standard
- Microsoft(R) Windows Server(R) 2012 R2 Datacenter
- Microsoft(R) Windows Server(R) 2016 Standard
- Microsoft(R) Windows Server(R) 2016 Datacenter
- Microsoft(R) Windows Server(R) 2019 Standard
- Microsoft(R) Windows Server(R) 2019 Datacenter
- Windows(R) 7 Professional
- Windows(R) 7 Ultimate
- Windows(R) 8.1 Pro
- Windows(R) 8.1 Enterprise
- Windows(R) 10 Pro
- Windows(R) 10 Enterprise

#### Windows Server 2012

- Microsoft(R) Windows Server(R) 2012 Standard
- Microsoft(R) Windows Server(R) 2012 Datacenter
- Microsoft(R) Windows Server(R) 2012 R2 Essentials
- Microsoft(R) Windows Server(R) 2012 R2 Standard
- Microsoft(R) Windows Server(R) 2012 R2 Datacenter

#### Windows Server 2016

- Microsoft(R) Windows Server(R) 2016 Standard
- Microsoft(R) Windows Server(R) 2016 Datacenter

#### Windows Server 2019

- Microsoft(R) Windows Server(R) 2019 Standard
- Microsoft(R) Windows Server(R) 2019 Datacenter

#### Windows PE

- Microsoft(R) Windows(R) Preinstallation Environment

## **Windows 7**

- Windows(R) 7 Professional
- Windows(R) 7 Ultimate

## **Windows 8.1**

- Windows(R) 8.1 Pro
- Windows(R) 8.1 Enterprise

## **Windows 10**

- Windows(R) 10 Pro
- Windows(R) 10 Enterprise

## **DOS**

- Microsoft(R) MS-DOS(R) operating system, DR DOS(R)

## **MSFC**

- Microsoft(R) Windows Server(R) 2012 Standard Failover Cluster
- Microsoft(R) Windows Server(R) 2012 Datacenter Failover Cluster

## **SCVMM**

- Microsoft(R) System Center 2012 Virtual Machine Manager
- Microsoft(R) System Center 2012 R2 Virtual Machine Manager
- Microsoft(R) System Center 2016 Virtual Machine Manager

## **Linux**

### **Linux**

- Red Hat(R) Enterprise Linux(R) 6.0 (for x86)
- Red Hat(R) Enterprise Linux(R) 6.0 (for Intel64)
- Red Hat(R) Enterprise Linux(R) 6.1 (for x86)
- Red Hat(R) Enterprise Linux(R) 6.1 (for Intel64)
- Red Hat(R) Enterprise Linux(R) 6.2 (for x86)
- Red Hat(R) Enterprise Linux(R) 6.2 (for Intel64)
- Red Hat(R) Enterprise Linux(R) 6.3 (for x86)
- Red Hat(R) Enterprise Linux(R) 6.3 (for Intel64)
- Red Hat(R) Enterprise Linux(R) 6.4 (for x86)
- Red Hat(R) Enterprise Linux(R) 6.4 (for Intel64)
- Red Hat(R) Enterprise Linux(R) 6.5 (for x86)
- Red Hat(R) Enterprise Linux(R) 6.5 (for Intel64)
- Red Hat(R) Enterprise Linux(R) 6.6 (for x86)
- Red Hat(R) Enterprise Linux(R) 6.6 (for Intel64)
- Red Hat(R) Enterprise Linux(R) 6.7 (for x86)
- Red Hat(R) Enterprise Linux(R) 6.7 (for Intel64)
- Red Hat(R) Enterprise Linux(R) 6.8 (for x86)
- Red Hat(R) Enterprise Linux(R) 6.8 (for Intel64)
- Red Hat(R) Enterprise Linux(R) 6.9 (for x86)
- Red Hat(R) Enterprise Linux(R) 6.9 (for Intel64)

- Red Hat(R) Enterprise Linux(R) 6.10 (for x86)
- Red Hat(R) Enterprise Linux(R) 6.10 (for Intel64)
- Red Hat(R) Enterprise Linux(R) 7.0 (for Intel64)
- Red Hat(R) Enterprise Linux(R) 7.1 (for Intel64)
- Red Hat(R) Enterprise Linux(R) 7.2 (for Intel64)
- Red Hat(R) Enterprise Linux(R) 7.4 (for Intel64)
- Red Hat(R) Enterprise Linux(R) 7.5 (for Intel64)
- SUSE(R) Linux Enterprise Server 10 Service Pack 2 for x86
- SUSE(R) Linux Enterprise Server 10 Service Pack 2 for AMD64 & Intel64
- SUSE(R) Linux Enterprise Server 10 Service Pack 3 for x86
- SUSE(R) Linux Enterprise Server 10 Service Pack 3 for AMD64 & Intel64
- SUSE(R) Linux Enterprise Server 11 for x86
- SUSE(R) Linux Enterprise Server 11 for AMD64 & Intel64
- SUSE(R) Linux Enterprise Server 11 Service Pack 1 for x86
- SUSE(R) Linux Enterprise Server 11 Service Pack 1 for AMD64 & Intel64
- Oracle Enterprise Linux Release 6.7 for x86 (32-bit)
- Oracle Enterprise Linux Release 6.7 for x86\_64 (64-bit)
- Oracle Enterprise Linux Release 7.2 for x86 (32-bit)
- Oracle Enterprise Linux Release 7.2 for x86\_64 (64-bit)

### **Red Hat Enterprise Linux**

- Red Hat(R) Enterprise Linux(R) 6.0 (for x86)
- Red Hat(R) Enterprise Linux(R) 6.0 (for Intel64)
- Red Hat(R) Enterprise Linux(R) 6.1 (for x86)
- Red Hat(R) Enterprise Linux(R) 6.1 (for Intel64)
- Red Hat(R) Enterprise Linux(R) 6.2 (for x86)
- Red Hat(R) Enterprise Linux(R) 6.2 (for Intel64)
- Red Hat(R) Enterprise Linux(R) 6.3 (for x86)
- Red Hat(R) Enterprise Linux(R) 6.3 (for Intel64)
- Red Hat(R) Enterprise Linux(R) 6.4 (for x86)
- Red Hat(R) Enterprise Linux(R) 6.4 (for Intel64)
- Red Hat(R) Enterprise Linux(R) 6.5 (for x86)
- Red Hat(R) Enterprise Linux(R) 6.5 (for Intel64)
- Red Hat(R) Enterprise Linux(R) 6.6 (for x86)
- Red Hat(R) Enterprise Linux(R) 6.6 (for Intel64)
- Red Hat(R) Enterprise Linux(R) 6.7 (for x86)
- Red Hat(R) Enterprise Linux(R) 6.7 (for Intel64)
- Red Hat(R) Enterprise Linux(R) 6.8 (for x86)
- Red Hat(R) Enterprise Linux(R) 6.8 (for Intel64)
- Red Hat(R) Enterprise Linux(R) 6.9 (for x86)
- Red Hat(R) Enterprise Linux(R) 6.9 (for Intel64)

- Red Hat(R) Enterprise Linux(R) 6.10 (for x86)
- Red Hat(R) Enterprise Linux(R) 6.10 (for Intel64)
- Red Hat(R) Enterprise Linux(R) 7.0 (for Intel64)
- Red Hat(R) Enterprise Linux(R) 7.1 (for Intel64)
- Red Hat(R) Enterprise Linux(R) 7.2 (for Intel64)
- Red Hat(R) Enterprise Linux(R) 7.4 (for Intel64)
- Red Hat(R) Enterprise Linux(R) 7.5 (for Intel64)

### **Red Hat Enterprise Linux 6**

- Red Hat(R) Enterprise Linux(R) 6.0 (for x86)
- Red Hat(R) Enterprise Linux(R) 6.0 (for Intel64)
- Red Hat(R) Enterprise Linux(R) 6.1 (for x86)
- Red Hat(R) Enterprise Linux(R) 6.1 (for Intel64)
- Red Hat(R) Enterprise Linux(R) 6.2 (for x86)
- Red Hat(R) Enterprise Linux(R) 6.2 (for Intel64)
- Red Hat(R) Enterprise Linux(R) 6.3 (for x86)
- Red Hat(R) Enterprise Linux(R) 6.3 (for Intel64)
- Red Hat(R) Enterprise Linux(R) 6.4 (for x86)
- Red Hat(R) Enterprise Linux(R) 6.4 (for Intel64)
- Red Hat(R) Enterprise Linux(R) 6.5 (for x86)
- Red Hat(R) Enterprise Linux(R) 6.5 (for Intel64)
- Red Hat(R) Enterprise Linux(R) 6.6 (for x86)
- Red Hat(R) Enterprise Linux(R) 6.6 (for Intel64)
- Red Hat(R) Enterprise Linux(R) 6.7 (for x86)
- Red Hat(R) Enterprise Linux(R) 6.7 (for Intel64)
- Red Hat(R) Enterprise Linux(R) 6.8 (for x86)
- Red Hat(R) Enterprise Linux(R) 6.8 (for Intel64)
- Red Hat(R) Enterprise Linux(R) 6.9 (for x86)
- Red Hat(R) Enterprise Linux(R) 6.9 (for Intel64)
- Red Hat(R) Enterprise Linux(R) 6.10 (for x86)
- Red Hat(R) Enterprise Linux(R) 6.10 (for Intel64)

### **Red Hat Enterprise Linux 7**

- Red Hat(R) Enterprise Linux(R) 7.0 (for Intel64)
- Red Hat(R) Enterprise Linux(R) 7.1 (for Intel64)
- Red Hat(R) Enterprise Linux(R) 7.2 (for Intel64)
- Red Hat(R) Enterprise Linux(R) 7.4 (for Intel64)
- Red Hat(R) Enterprise Linux(R) 7.5 (for Intel64)

### **SUSE Linux Enterprise Server**

- SUSE(R) Linux Enterprise Server 10 Service Pack 2 for x86
- SUSE(R) Linux Enterprise Server 10 Service Pack 2 for AMD64 & Intel64
- SUSE(R) Linux Enterprise Server 10 Service Pack 3 for x86



- SUSE(R) Linux Enterprise Server 10 Service Pack 3 for AMD64 & Intel64
- SUSE(R) Linux Enterprise Server 11 for x86
- SUSE(R) Linux Enterprise Server 11 for AMD64 & Intel64
- SUSE(R) Linux Enterprise Server 11 Service Pack 1 for x86
- SUSE(R) Linux Enterprise Server 11 Service Pack 1 for AMD64 & Intel64

### **Oracle Enterprise Linux**

- Oracle Enterprise Linux Release 6.7 for x86 (32-bit)
- Oracle Enterprise Linux Release 6.7 for x86\_64 (64-bit)
- Oracle Enterprise Linux Release 7.2 for x86 (32-bit)
- Oracle Enterprise Linux Release 7.2 for x86\_64 (64-bit)

## **KVM**

### **RHEL-KVM**

- Red Hat(R) Enterprise Linux(R) 6.1 (for x86) Virtual Machine Function
- Red Hat(R) Enterprise Linux(R) 6.1 (for Intel64) Virtual Machine Function
- Red Hat(R) Enterprise Linux(R) 6.2 (for x86) Virtual Machine Function
- Red Hat(R) Enterprise Linux(R) 6.2 (for Intel64) Virtual Machine Function
- Red Hat(R) Enterprise Linux(R) 6.3 (for x86) Virtual Machine Function
- Red Hat(R) Enterprise Linux(R) 6.3 (for Intel64) Virtual Machine Function
- Red Hat(R) Enterprise Linux(R) 6.4 (for x86) Virtual Machine Function
- Red Hat(R) Enterprise Linux(R) 6.4 (for Intel64) Virtual Machine Function
- Red Hat(R) Enterprise Linux(R) 6.5 (for x86) Virtual Machine Function
- Red Hat(R) Enterprise Linux(R) 6.5 (for Intel64) Virtual Machine Function
- Red Hat(R) Enterprise Linux(R) 6.6 (for x86) Virtual Machine Function
- Red Hat(R) Enterprise Linux(R) 6.6 (for Intel64) Virtual Machine Function
- Red Hat(R) Enterprise Linux(R) 6.7 (for x86) Virtual Machine Function
- Red Hat(R) Enterprise Linux(R) 6.7 (for Intel64) Virtual Machine Function
- Red Hat(R) Enterprise Linux(R) 6.8 (for x86) Virtual Machine Function
- Red Hat(R) Enterprise Linux(R) 6.8 (for Intel64) Virtual Machine Function

## **Xen**

### **Xen**

- Citrix XenServer(R) 5.5
- Citrix Essentials(TM) for XenServer 5.5, Enterprise Edition
- Citrix XenServer(R) 6.0
- Citrix Essentials(TM) for XenServer 6.0, Enterprise Edition

## **Citrix**

### **Citrix XenServer**

- Citrix XenServer(R) 6.0
- Citrix XenServer(R) 6.0.2
- Citrix XenServer(R) 6.1.0
- Citrix XenServer(R) 6.2.0

- Citrix XenServer(R) 7.1 LTSR
- Citrix XenServer(R) 7.2
- Citrix Hypervisor(R)

#### **XenServer 6**

- Citrix XenServer(R) 6.0
- Citrix Essentials(TM) for XenServer 6.0, Enterprise Edition

#### **Citrix XenApp**

- Citrix XenApp(R)
- Citrix Virtual Apps(R)

#### **Citrix XenDesktop**

- Citrix XenDesktop(R)
- Citrix Virtual Apps and Desktops(R)

### **Oracle Solaris**

#### **Solaris**

- Oracle Solaris 10 05/09 (Update7)
- Oracle Solaris 11 11/11
- Oracle Solaris 11.1
- Oracle Solaris 11.2
- Oracle Solaris 11.3

### **Oracle VM**

#### **OVM for x86 2.2**

- Oracle(R) VM Server for x86 2.2

#### **OVM for x86 3.x**

##### **OVM for x86 3.2**

- Oracle VM Server for x86 v3.2.x

##### **OVM for x86 3.3**

- Oracle VM Server for x86 v3.3.x

##### **OVM for SPARC**

- Oracle(R) VM Server for SPARC

#### **Oracle VM Manager**

- Oracle(R) VM Manager

### **EMC**

#### **Navisphere**

- EMC Navisphere Manager

#### **Solutions Enabler**

- EMC Solutions Enabler

### **VMware**

#### **VMware vSphere or vSphere**

- VMware vSphere(R) 4
- VMware vSphere(R) 4.1

- VMware vSphere(R) 5
- VMware vSphere(R) 5.1
- VMware vSphere(R) 5.5
- VMware vSphere(R) 6
- VMware vSphere(R) 6.5
- VMware vSphere(R) 6.7

#### **VMware ESX**

- VMware(R) ESX(R)

#### **VMware ESX 4**

- VMware(R) ESX(R) 4

#### **VMware ESXi**

- VMware(R) ESXi(TM)

#### **VMware ESXi 5.0**

- VMware(R) ESXi(TM) 5.0

#### **VMware ESXi 5.1**

- VMware(R) ESXi(TM) 5.1

#### **VMware ESXi 5.5**

- VMware(R) ESXi(TM) 5.5

#### **VMware ESXi 6.0**

- VMware(R) ESXi(TM) 6.0

#### **VMware ESXi 6.5**

- VMware(R) ESXi(TM) 6.5

#### **VMware ESXi 6.7**

- VMware(R) ESXi(TM) 6.7

#### **VMware Infrastructure Client**

- VMware(R) Infrastructure Client

#### **VMware Tools**

- VMware(R) Tools

#### **VMware vSphere 4.0 or vSphere 4.0**

- VMware vSphere(R) 4.0

#### **VMware vSphere 4.1 or vSphere 4.1**

- VMware vSphere(R) 4.1

#### **VMware vSphere 5 or vSphere 5**

- VMware vSphere(R) 5

#### **VMware vSphere 5.1 or vSphere 5.1**

- VMware vSphere(R) 5.1

#### **VMware vSphere 5.5 or vSphere 5.5**

- VMware vSphere(R) 5.5

#### **VMware vSphere 6.0 or vSphere 6.0**

- VMware vSphere(R) 6.0

**VMware vSphere 6.5 or vSphere 6.5**

- VMware vSphere(R) 6.5

**VMware vSphere 6.7 or vSphere 6.7**

- VMware vSphere(R) 6.7

**VMware vSphere Client or vSphere Client**

- VMware vSphere(R) Client

**VMware vCenter Server or vCenter Server**

- VMware(R) vCenter(TM) Server

**VMware vCenter Server Appliance or vCenter Server Appliance**

- VMware(R) vCenter(TM) Server Appliance(TM)

**VMware vClient**

- VMware(R) vClient(TM)

**VMware FT**

- VMware(R) Fault Tolerance

**VMware DRS**

- VMware(R) Distributed Resource Scheduler

**VMware DPM**

- VMware(R) Distributed Power Management

**VMware Storage VMotion**

- VMware(R) Storage VMotion

**VMware vDS**

- VMware(R) vNetwork Distributed Switch

**VMware Horizon View**

- VMware Horizon View 5.2.x
- VMware Horizon View 5.3.x
- VMware Horizon 6.0 (with View)

**VMware VSAN or VSAN**

- VMware(R) Virtual SAN(TM)

**VMware vSphere Web Client or vSphere Web Client**

- VMware vSphere(R) Web Client

**VMware NSX**

- VMware NSX(R)
- VMware NSX(R) for vSphere(R)
- VMware NSX(R) for vSphere(R) 6.3

**VMware NSX Controller or NSX Controller**

- VMware NSX(R) Controller(TM)

**VMware NSX Edge or NSX Edge**

- VMware NSX(R) Edge(TM)

**VMware NSX Manager or NSX Manager**

- VMware NSX(R) Manager(TM)

## **Excel**

### **Excel**

- Microsoft(R) Office Excel(R) 2007
- Microsoft(R) Office Excel(R) 2010
- Microsoft(R) Office Excel(R) 2013

### **Excel 2007**

- Microsoft(R) Office Excel(R) 2007

### **Excel 2010**

- Microsoft(R) Office Excel(R) 2010

### **Excel 2013**

- Microsoft(R) Office Excel(R) 2013

## **Browsers**

### **Internet Explorer**

- Internet Explorer(R) 11

### **Firefox**

- Firefox(R)

## **Antivirus Software**

### **OfficeScan**

- Trend Micro OfficeScan

### **McAfee ePolicy Orchestrator**

- McAfee(R) ePolicy Orchestrator(R)

### **McAfee ePO**

- McAfee(R) ePolicy Orchestrator(R)

### **McAfee Agent**

- McAfee(R) Agent

### **McAfee Endpoint Security**

- McAfee(R) Endpoint Security

### **Symantec Endpoint Protection**

- Symantec(TM) Endpoint Protection

### **Symantec Endpoint Protection Manager**

- Symantec(TM) Endpoint Protection Manager

## **BMC**

### **BladeLogic**

- BMC BladeLogic Server Automation

## **ETERNUS**

### **ESC**

- ETERNUS SF Storage Cruiser

## **ServerView**

### **ServerView Agent**

- ServerView SNMP Agents for MS Windows (32-bit and 64-bit)

- ServerView Agents Linux
- ServerView Agents VMware for VMware ESX Server

#### **VIOM**

- ServerView Virtual-IO Manager

#### **ISM**

- ServerView Infrastructure Manager
- Infrastructure Manager

#### **SVOM**

- ServerView Operations Manager

#### **SVFAB**

- ServerView Fabric Manager

#### **RCVE**

- ServerView Resource Coordinator VE

#### **ROR**

- FUJITSU Software ServerView Resource Orchestrator

#### **ROR VE**

- FUJITSU Software ServerView Resource Orchestrator Virtual Edition

#### **ROR CE**

- FUJITSU Software ServerView Resource Orchestrator Cloud Edition

#### **Resource Coordinator**

- Systemwalker Resource Coordinator
- Systemwalker Resource Coordinator Virtual server Edition

#### **Resource Coordinator VE**

- ServerView Resource Coordinator VE
- Systemwalker Resource Coordinator Virtual server Edition

#### **Resource Orchestrator**

- FUJITSU Software ServerView Resource Orchestrator

### **Export Administration Regulation Declaration**

Exportation/release of this document may require necessary procedures in accordance with the regulations of your resident country and/or US export control laws.

### **Trademark Information**

- BMC, BMC Software, and the BMC Software logo are the exclusive properties of BMC Software, Inc., are registered with the U.S. Patent and Trademark Office, and may be registered or pending registration in other countries.
- Citrix, Citrix Virtual Apps and Desktops, Citrix Virtual Apps, Citrix Hypervisor, XenApp, XenDesktop, XenServer, Citrix Essentials are trademarks of Citrix Systems, Inc. and/or one of its subsidiaries, and may be registered in the United States Patent and Trademark Office and in other countries.
- EMC, EMC2, CLARiiON, VNX, Symmetrix, and Navisphere are trademarks or registered trademarks of EMC Corporation.
- HP is a registered trademark of Hewlett-Packard Company.
- Linux(R) is a trademark or registered trademark of Linus Torvalds in the United States and other countries.
- McAfee and the McAfee logo, ePolicy Orchestrator, and McAfee ePO are trademarks or registered trademarks of McAfee, LLC or its subsidiaries in the United States and other countries.

- Microsoft, Windows, MS-DOS, Windows Server, Windows Vista, Excel, Active Directory, and Internet Explorer are either registered trademarks or trademarks of Microsoft Corporation in the United States and other countries.
- Firefox is a trademark or registered trademark of the Mozilla Foundation in the United States and other countries.
- NetApp is a registered trademark of Network Appliance, Inc. in the US and other countries. Data ONTAP, Network Appliance, and Snapshot are trademarks of Network Appliance, Inc. in the US and other countries.
- Oracle and Java are registered trademarks of Oracle and/or its affiliates.
- Red Hat, RPM and all Red Hat-based trademarks and logos are trademarks or registered trademarks of Red Hat, Inc. in the United States and other countries.
- "SUSE" and the SUSE logo are trademarks of SUSE LLC or its subsidiaries or affiliates.
- Symantec and the Symantec logo are trademarks or registered trademarks of the Symantec Corporation or its subsidiaries in the United States and other countries.
- TREND MICRO and OfficeScan are registered trademarks of Trend Micro, Inc.
- VMware, the VMware "boxes" logo and design, Virtual SMP, and VMotion are registered trademarks or trademarks of VMware, Inc. in the United States and/or other jurisdictions.
- ServerView and Systemwalker are registered trademarks of FUJITSU LIMITED.
- All other brand and product names are trademarks or registered trademarks of their respective owners.

## Notices

- The contents of this manual shall not be reproduced without express written permission from FUJITSU LIMITED.
- The contents of this manual are subject to change without notice.

## Revision History

Month/Year Issued, Edition	Manual Code
November 2011, Edition 1.0	J2X1-7622-01ENZ0(00)
February 2011, Edition 1.1	J2X1-7622-01ENZ0(01)
July 2012, Edition 2.0	J2X1-7622-02ENZ0(00)
October 2012, Edition 3.0	J2X1-7622-03ENZ0(00)
December 2012, Edition 4.0	J2X1-7622-04ENZ0(00)
January 2013, Edition 5.0	J2X1-7622-05ENZ0(00)
June 2013, Edition 5.1	J2X1-7622-05ENZ0(01)
August 2013, Edition 5.2	J2X1-7622-05ENZ0(02)
December 2013, Edition 6.0	J2X1-7622-06ENZ0(00)
June 2014, Edition 6.1	J2X1-7622-06ENZ0(01)
April 2015, Edition 7.0	J2X1-7622-07ENZ0(00)
July 2015, Edition 7.1	J2X1-7622-07ENZ0(01)
December 2015, Edition 7.2	J2X1-7622-07ENZ0(02)
January 2016, Edition 7.3	J2X1-7622-07ENZ0(03)
June 2016, Edition 7.4	J2X1-7622-07ENZ0(04)
September 2016, Edition 7.5	J2X1-7622-07ENZ0(05)
December 2016, Edition 7.6	J2X1-7622-07ENZ0(06)
February 2017, Edition 7.7	J2X1-7622-07ENZ0(07)
April 2017, Edition 8.0	J2X1-7622-08ENZ0(00)
May 2017, Edition 8.1	J2X1-7622-08ENZ0(01)

Month/Year Issued, Edition	Manual Code
August 2017, Edition 8.2	J2X1-7622-08ENZ0(02)
September 2017, Edition 8.3	J2X1-7622-08ENZ0(03)
December 2017, Edition 8.4	J2X1-7622-08ENZ0(04)
February 2018, Edition 8.5	J2X1-7622-08ENZ0(05)
March 2018, Edition 8.6	J2X1-7622-08ENZ0(06)
October 2018, Edition 9.0	J2X1-7622-09ENZ0(00)
December 2018, Edition 9.1	J2X1-7622-09ENZ0(01)
December 2018, Edition 9.2	J2X1-7622-09ENZ0(02)
October 2020, Edition 9.3	J2X1-7622-09ENZ0(03)

**Copyright Notice**

Copyright 2011-2020 FUJITSU LIMITED



# Contents

---

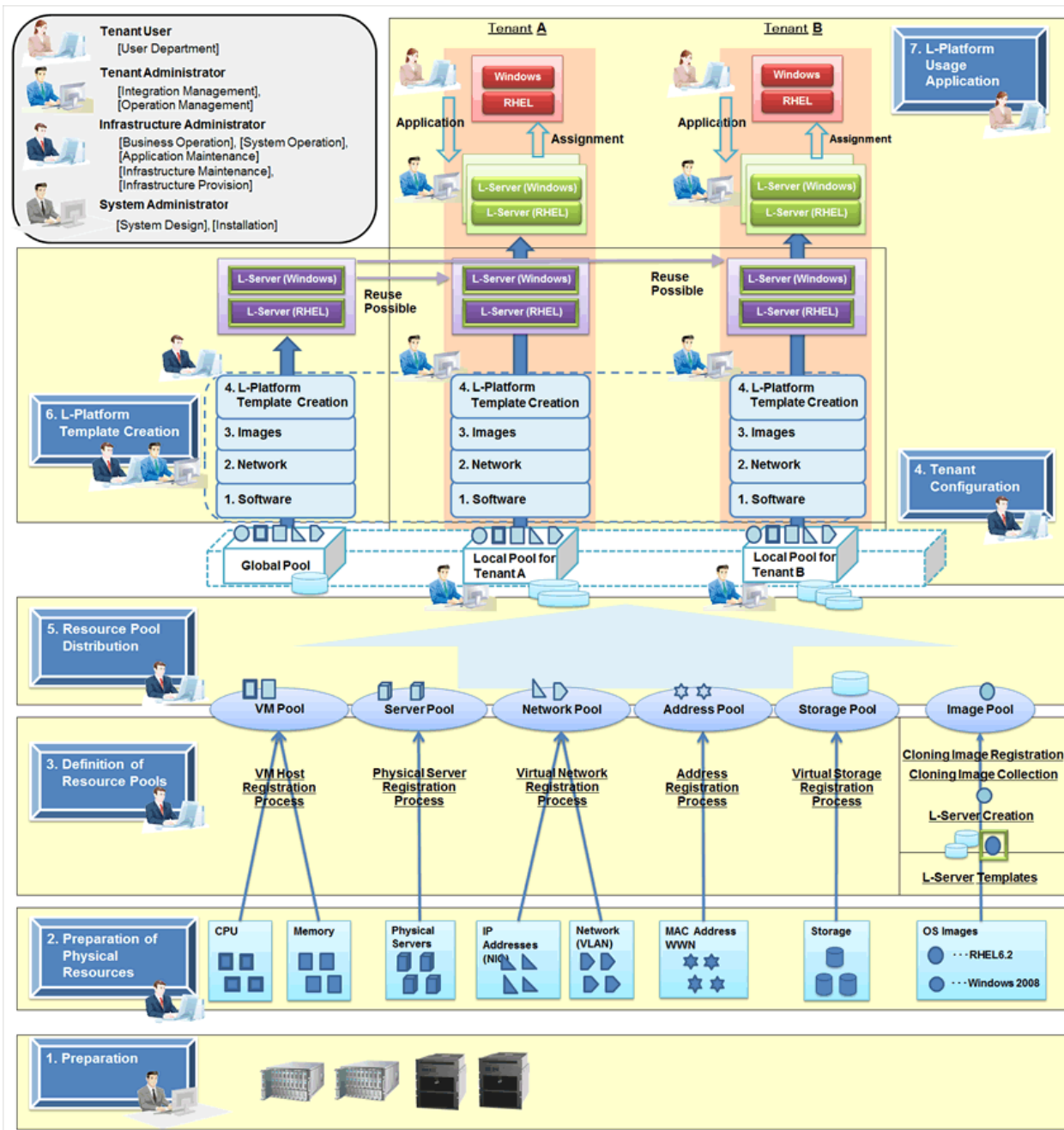
Chapter 1 Resource Orchestrator Setup Procedure.....	1
1.1 Preparations.....	2
1.2 Preparations of physical resources.....	2
1.3 Executing resource pool creation.....	3
1.4 Tenant configuration.....	5
1.5 Distributing Resource Pools.....	5
1.6 L-Platform Template Creation.....	5
1.7 Application for L-Platform usage.....	6
Chapter 2 List of Functions Provided by the ROR Console.....	7

# Chapter 1 Resource Orchestrator Setup Procedure

This chapter explains the setup flow of Resource Orchestrator.

The setup flow of Resource Orchestrator is as follows:

Figure 1.1 Resource Orchestrator Setup Procedure



For details on the user roles in Resource Orchestrator, refer to "Chapter 4 User Roles in Resource Orchestrator [Cloud Edition]" in the "Overview".

For information about the ROR console, refer to "Chapter 2 List of Functions Provided by the ROR Console".

Table 1.1 Resource Orchestrator Setup Procedure

Number	Item	Operator	Tabs Used on the ROR Console
1	<a href="#">Preparations</a>	System administrators	<a href="#">Account</a>

Number	Item	Operator	Tabs Used on the ROR Console
2	<a href="#">Preparations of physical resources</a>	Infrastructure administrator	<a href="#">Resource</a>
3	<a href="#">Executing resource pool creation</a>	Infrastructure administrator	<a href="#">Resource</a>
4	<a href="#">Tenant configuration</a>	Infrastructure administrator	<a href="#">Tenant</a>
5	<a href="#">Resource pool distribution</a>	Infrastructure administrator	<a href="#">Resource</a>
6	<a href="#">L-Platform template creation</a>	Infrastructure administrator Tenant administrator	<a href="#">Template</a>
7	<a href="#">Application for L-Platform usage</a>	Tenant user	<a href="#">Request</a> <a href="#">L-Platform</a>

## 1.1 Preparations

---

### 1. Design and Pre-configuration

Perform the design and pre-configuration necessary to use Resource Orchestrator.

Refer to the "Design Guide CE".

### 2. Resource Orchestrator Manager Installation and Configuration

Install the manager of Resource Orchestrator on an admin server.

For details on how to install and configure the manager, refer to the following:

- "2.1 Manager Installation" in the "Setup Guide CE"
- "Chapter 3 SSL Communication Environment Settings for the ROR Console" in the "Setup Guide CE"
- "Chapter 2 Registering Resources" in the "User's Guide for Infrastructure Administrators CE"
- "Chapter 4 License Setup and Confirmation" in the "Setup Guide CE"
- "Chapter 5 Importing a Certificate to a Browser" in the "Setup Guide CE"
- "Chapter 3.1 Registering User Accounts" in the "User's Guide for Infrastructure Administrators (Resource Management) CE"
- "Appendix G Definition Files" in the "Setup Guide CE"

### 3. Create a Windows PE

It is necessary to create a Windows PE after installing the manager of Resource Orchestrator.

For details, refer to the "Windows PE Creation Script Guide".

### 4. Install Agents on VM Hosts

Install Resource Orchestrator agents, after installing software on the VM host.

For details on installing agents, refer to the following in the "Setup Guide CE".

- "2.2 Agent Installation"
- "2.3 Agent (Dashboard Function) Installation"

### 5. Install HBA address rename Service Servers

Install HBA address rename service servers.

Refer to "2.4 HBA address rename setup service Installation" in the "Setup Guide CE".

## 1.2 Preparations of physical resources

---

Prepare physical resources.

Register resources with Resource Orchestrator. Use the [Resources] tab in the ROR console to register resources.

For details, refer to the following:

- "Chapter 5 Registering Resources" in the "User's Guide for Infrastructure Administrators (Resource Management) CE"
- "6.1 Settings for the HBA address rename Setup Service" in the "Setup Guide CE"

## 1.3 Executing resource pool creation

Execute resource pool creation.

There are the two following types of resource pools.

**Table 1.2 Resource Pool Type**

Resource Pool Type	Description
Global Pools	A resource pool shared among all tenants. When the manager of Resource Orchestrator is installed, this resource pool is automatically created.
Local Pools	A resource pool which can only be used by a specific tenant. When creating a tenant, a local pool dedicated to the tenant is automatically created.

Figure 1.2 Global Pools

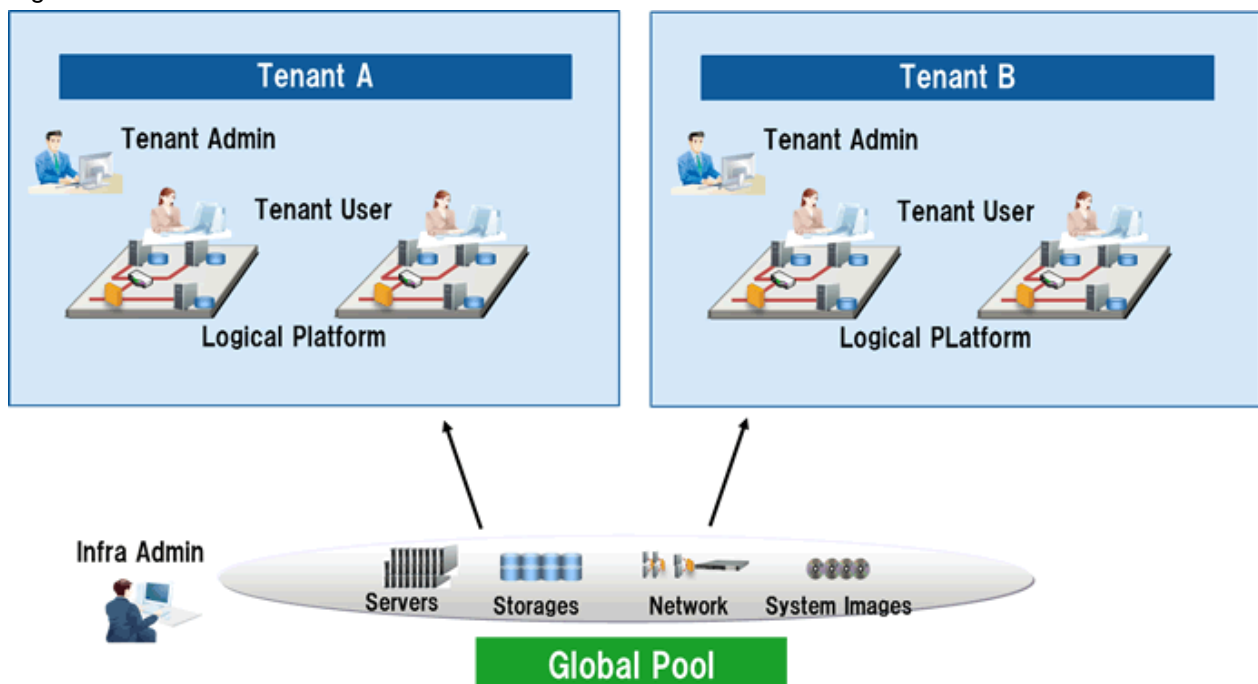
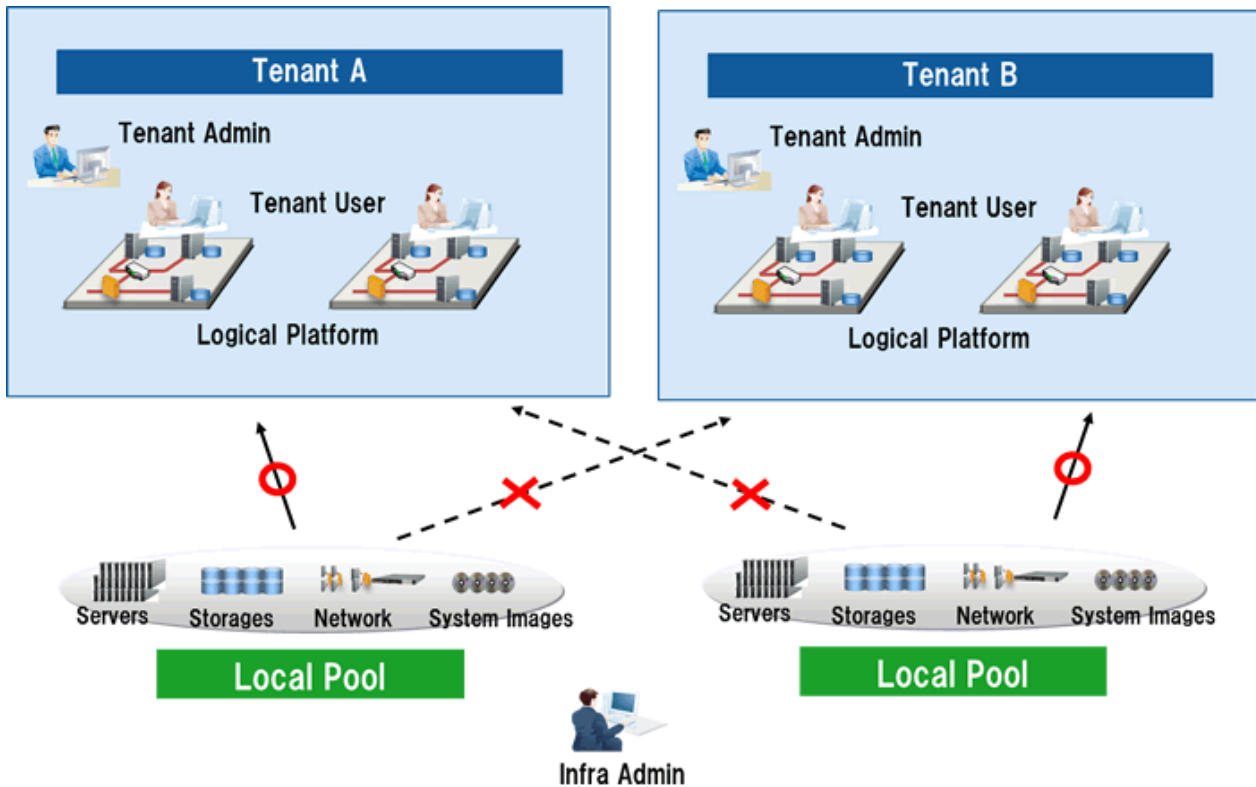


Figure 1.3 Local Pools



**P Point**

**Using a Global Pool and a Local Pool in Combination**

A global pool and a local pool can be used in combination.

For details on how to select resource pools depending on the resource types, refer to "Chapter 6 Defining Tenants and Resource Pools" in the "Design Guide CE".

1. Register Resources to the Global Pool

Register resources which have been registered in Resource Orchestrator to the global pool so they can be shared with other tenants.

The target resources are as follows:

- VM Pool
- Server Pool
- Storage Pool
- Network Pool
- Address Pool

For details, refer to "Chapter 14 Registering Resources in Resource Pools" in the "User's Guide for Infrastructure Administrators (Resource Management) CE".

2. Create an L-Server Template

Create an L-Server template.

For details, refer to "Chapter 15 L-Server Template Operations" in the "User's Guide for Infrastructure Administrators (Resource Management) CE".

3. Create an L-Server for the Infrastructure Administrator

Create L-Servers for infrastructure administrators in order to collect cloning images.

A cloning image is an image, excluding server specific information (system node names, IP addresses, etc.), collected from the system disk.

An L-Server for infrastructure administrators is an L-Server that can only be used by infrastructure administrators, not by tenant administrators or tenant users.

Standard L-Servers can only be used by tenants administrators and tenant users.

For details, refer to "Chapter 16 Creating L-Servers" in the "User's Guide for Infrastructure Administrators (Resource Management) CE".

#### 4. Collect and Register Cloning Images

Collect cloning images, and register them in the image pool.

For details, refer to "17.5.1 Collecting and Registering" in the "User's Guide for Infrastructure Administrators (Resource Management) CE".

## 1.4 Tenant configuration

---

### 1. Create Tenants

Create tenants.

For details, refer to "11.3 Creating a Tenant" in the "User's Guide for Infrastructure Administrators CE".

### 2. Create Tenant Administrators

Create tenant administrators.

For details, refer to "11.7 Registering a User" in the "User's Guide for Infrastructure Administrators CE".

## 1.5 Distributing Resource Pools

---

When using a local pool, register resources to the local pool.

For details, refer to "Chapter 14 Registering Resources in Resource Pools" in the "User's Guide for Infrastructure Administrators (Resource Management) CE".

## 1.6 L-Platform Template Creation

---

Create an L-Platform template.

An L-Platform template consists of the following:

- Template Information
- Segment Information
- Image Information
- Software Information

There are two following types of L-Platform templates.

Types of L-Platform Templates	Description	Creator
Global template	An L-Platform template shared with all tenants. Infrastructure administrators create global templates, and release them to tenant administrators.	Infrastructure administrator

Types of L-Platform Templates	Description	Creator
Template specific to a tenant	<p>An L-Platform template which can only be used by a specific tenant.</p> <p>Tenant administrators edit the template specific to the tenant based on the global template.</p> <p>Tenant administrators create templates specific to a tenant, and release them to tenant users.</p>	Tenant administrator

Create L-Platform templates in the [Templates] tab of the ROR console.

For details on how to create global templates, refer to "Chapter 8 Template" in the "User's Guide for Infrastructure Administrators CE".

For details on how to create templates specific to a tenant, refer to "Chapter 7 Template" in the "User's Guide for Tenant Administrators CE".

## 1.7 Application for L-Platform usage

---

### 1. Apply for L-Platform Usage

The tenant user applies to use an L-Platform.

Apply for L-Platform usage from the [L-Platforms] tab of the ROR console.

For details, refer to "5.2 Subscribe to an L-Platform" in the "User's Guide for Tenant Users CE".

### 2. Use L-Platforms

Tenant users configure business applications using deployed L-Platforms.

Access the deployed L-Platforms using remote desktop functions.

For details, refer to "5.6 How to Use the L-Platform" in the "User's Guide for Tenant Users CE".

## Chapter 2 List of Functions Provided by the ROR Console

This chapter explains the functions provided by the ROR console.

The ROR Console provides the two following types of windows.

### - Windows intended for tenant administrators and tenant users

Windows intended for tenant administrators and tenant users are provided for L-Platform and user information operations.

These windows are configured by tenant administrators themselves, and have been provided to reduce the infrastructure administrator workload.

### - Windows intended for infrastructure administrators

Operation windows and dashboard windows intended for infrastructure administrators are also provided for L-Platform and user information operations.

These windows are provided to enable infrastructure administrators to display and operate all L-Platform and tenant information and to access important information quickly.

Using the ROR console, the appropriate functions can be provided to each user, by changing the display depending on user roles.

The windows for functions that cannot be operated by the relevant role are not displayed.

## List of ROR Console Functions

The table below shows relationships between the functions provided by the ROR Console and users.

**Table 2.1 Relationships between Functions Provided by the ROR Console and Users**

Function	Infrastructure administrator	Tenant administrator	Tenant user
Home	Yes	Yes	Yes
Dashboard (Pool Conditions)	Yes	Yes	-
Dashboard (System Conditions)	Yes	Yes	Yes
Dashboard (Capacity Planning)	Yes	Yes	-
Resource	Yes	-	-
Template	Yes	Yes	-
L-Platform	Yes	Yes	Yes
Request	Yes	Yes	Yes
Tenant	Yes	Yes	-
Usage Charges	Yes	Yes	-
Account	Yes	Yes	Yes
Options	Yes	Yes	Yes
Help	Yes	Yes	Yes

Yes: Displayed (Some functions are not displayed depending on the possessed user privileges.) For details on privileges, refer to "5.1 Restricting Access Using Roles" in the "Design Guide CE".

-.: Hidden

## Home

The window displayed immediately after login to the ROR Console. A function list and notifications are displayed.



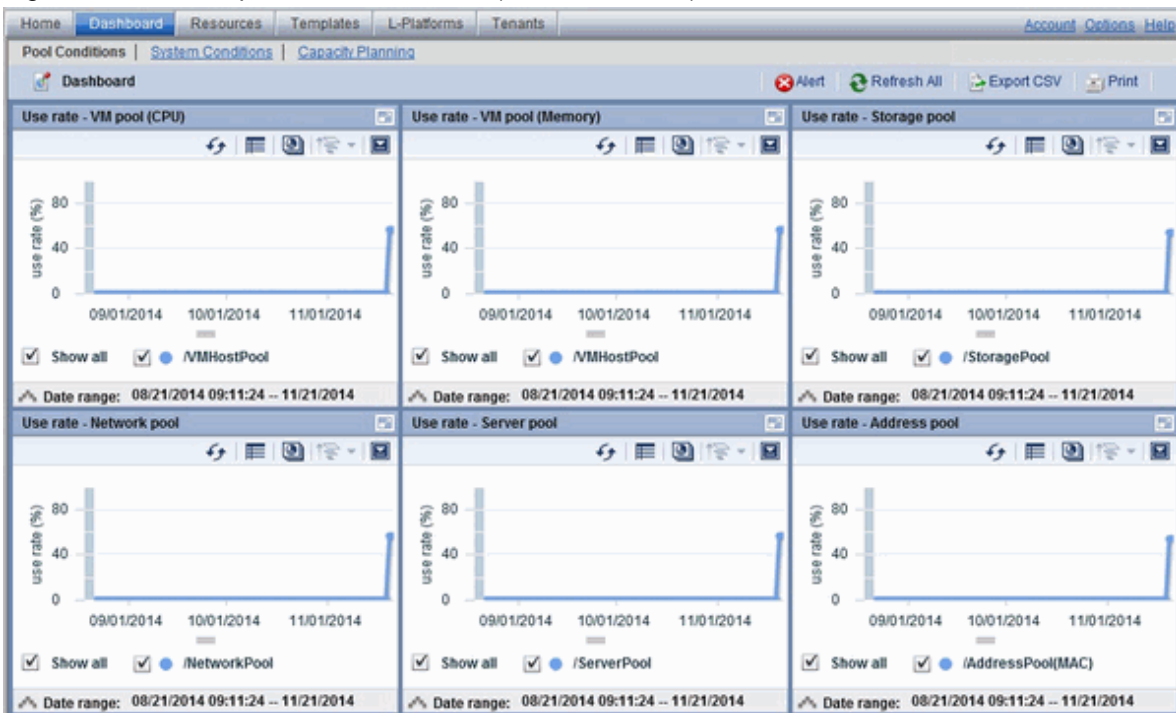
Figure 2.1 An Example of the Home Window



### Dashboard (Pool Conditions)

Displays the resource pool usage status.

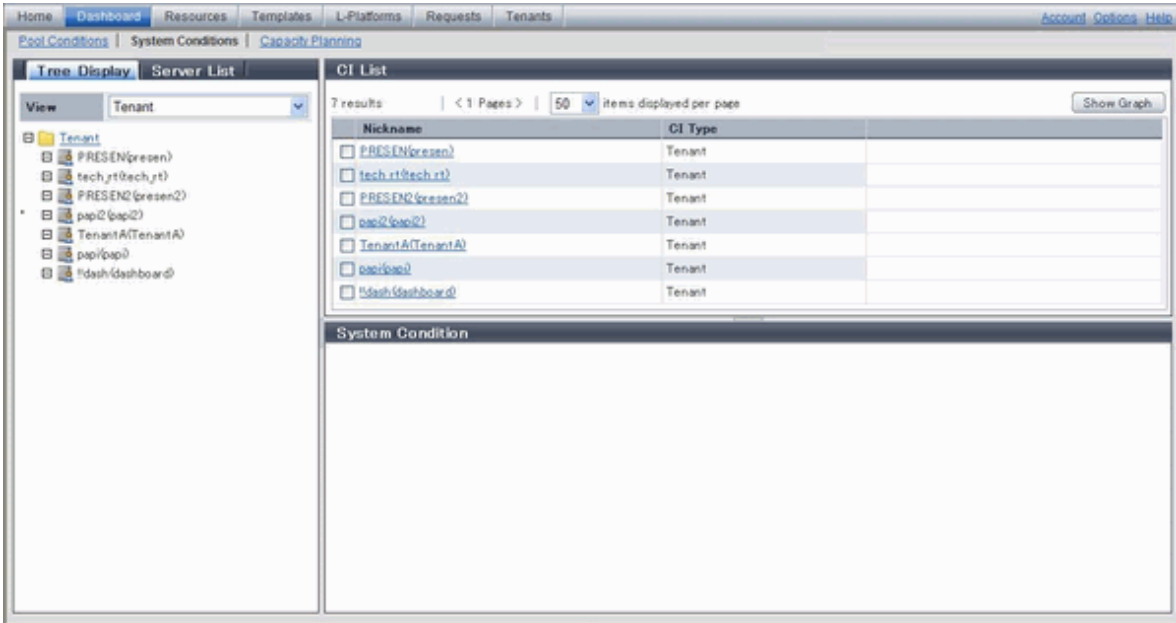
Figure 2.2 An Example of the Dashboard (Pool Conditions) Window



### Dashboard (System Conditions)

Displays L-Server performance information and configuration information.

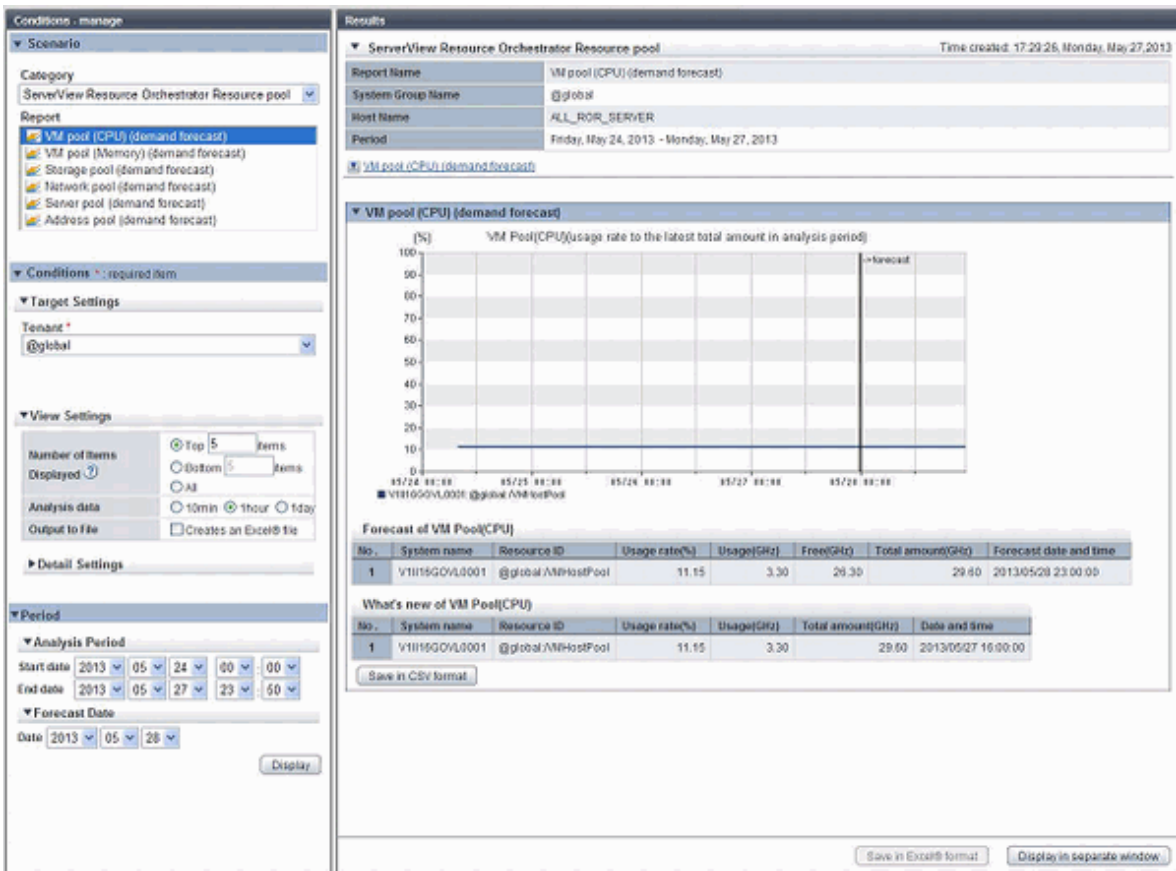
Figure 2.3 An Example of the Dashboard (System Conditions) Window



### Dashboard (Capacity Planning)

Anticipate the demand for resource pools and perform simulations of VM guest reallocations.

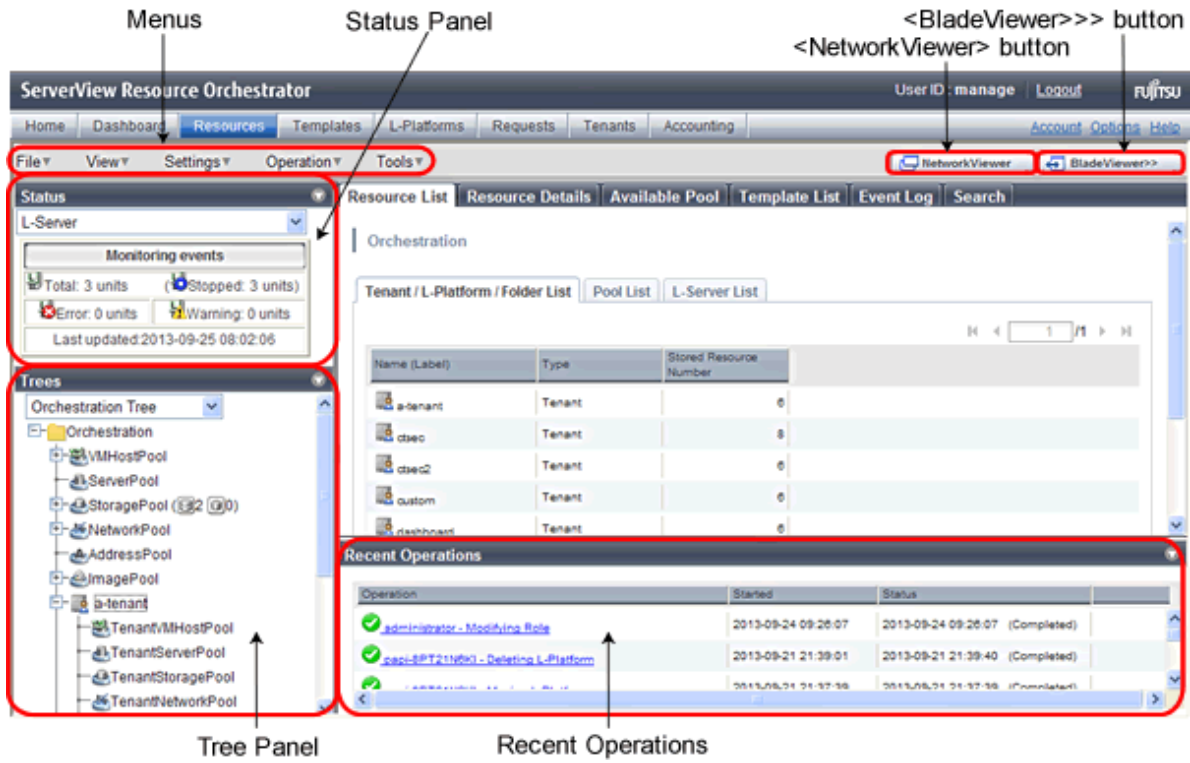
Figure 2.4 An Example of the Dashboard (Capacity Planning) Window



### Resource

A window for managing the resource pool and the relationship of resources to L-Server.

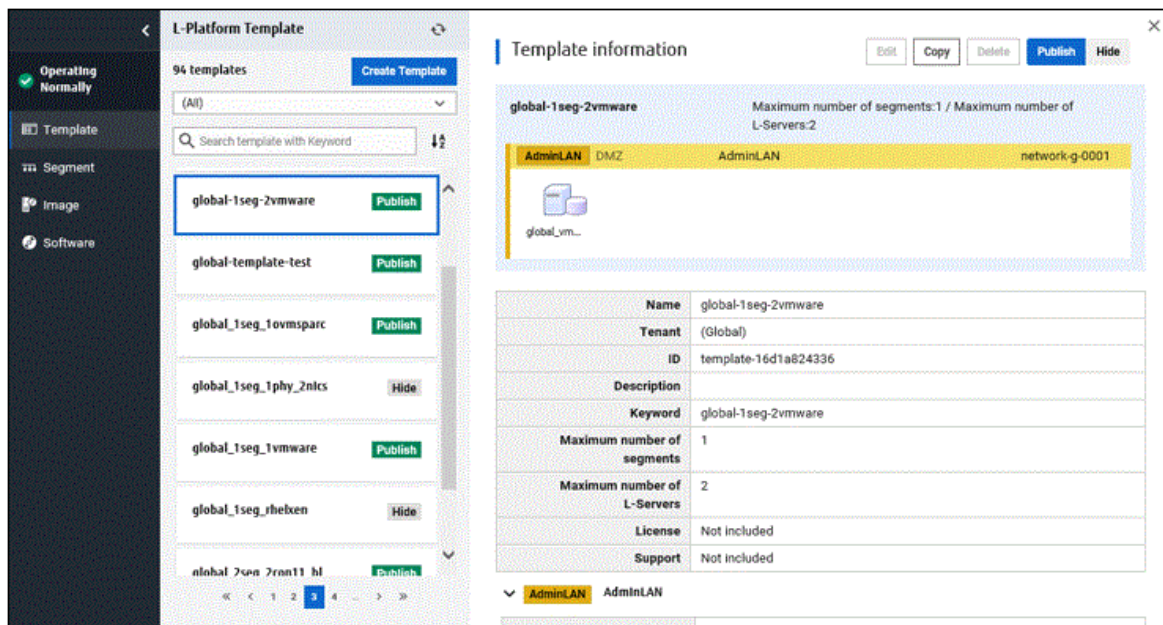
Figure 2.5 An Example of the Resource Window



## Template

A window for managing L-Platform Templates.

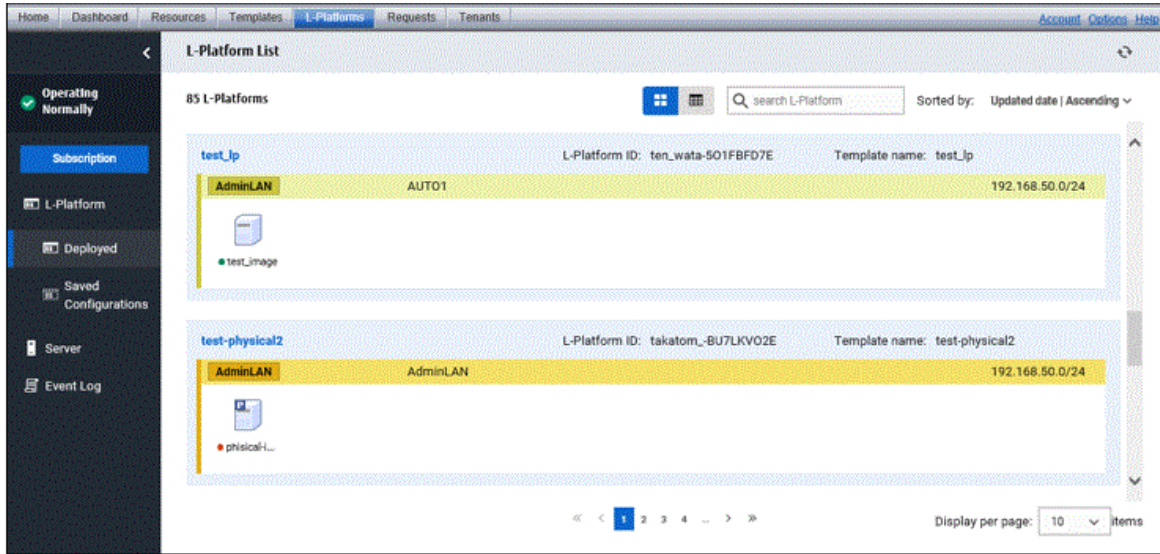
Figure 2.6 An Example of the Template Window



## L-Platform

A window for managing L-Platforms.

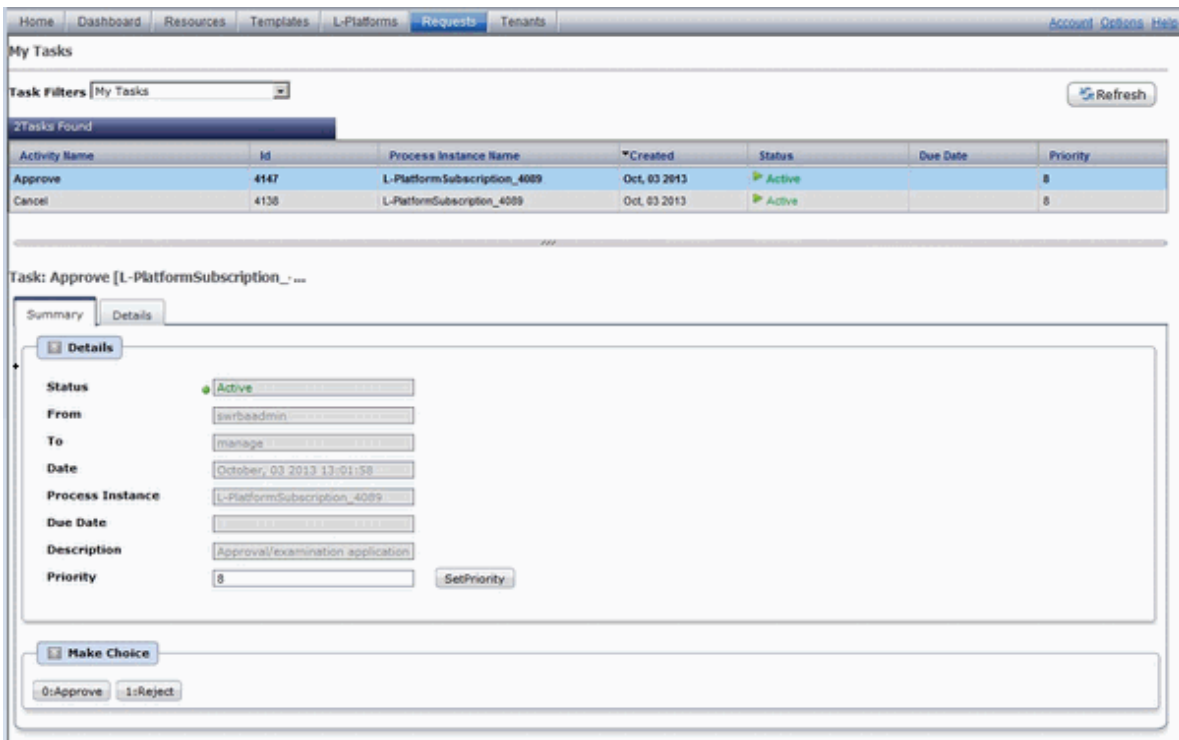
Figure 2.7 An Example of the L-Platform Window



### Request

A window for assessing and approving L-Platform usage applications and other applications from tenant users.

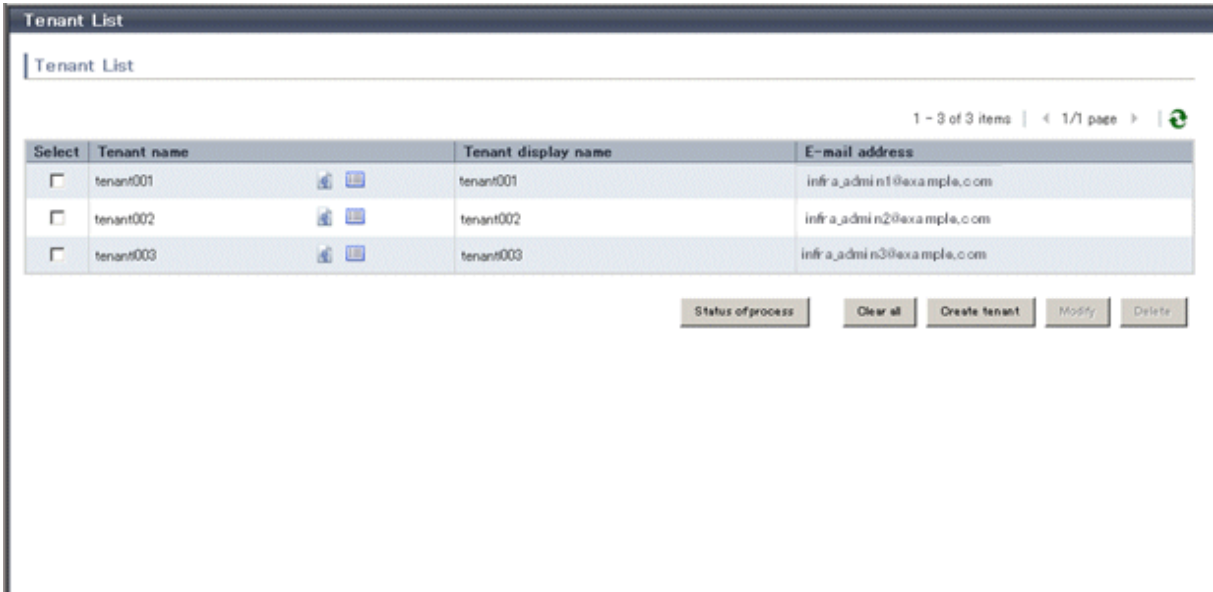
Figure 2.8 An Example of the Request Window



### Tenant

A window for managing tenants and users belonging to tenants.

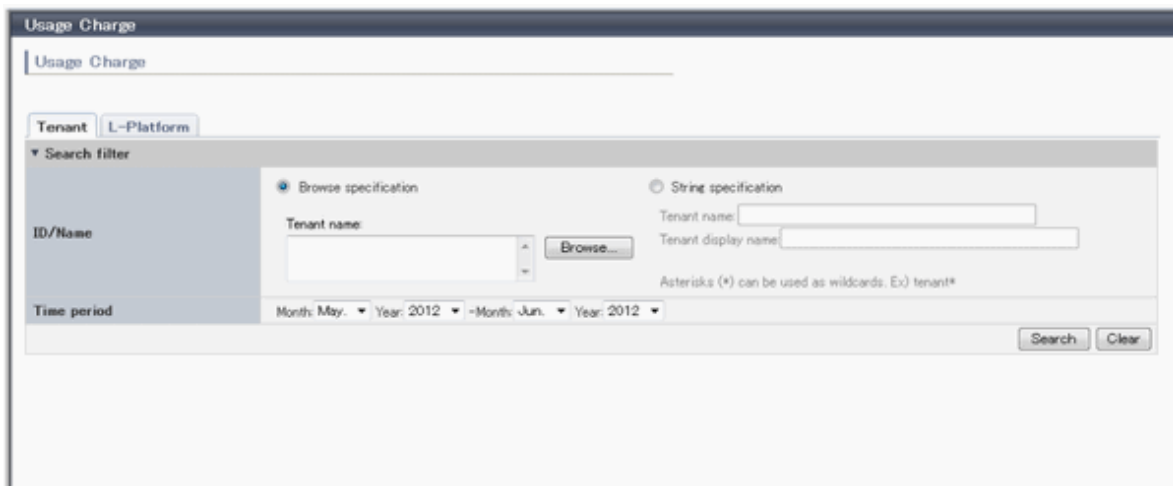
Figure 2.9 An Example of the Tenant Window



### Usage Charges

Records of usage charges can be viewed.

Figure 2.10 An Example of the Usage Charges Window



### Account

A window for changing a logged in user's information and password.

Figure 2.11 An Example of the Account Window

To modify your account, click [Modify account] button.  
To change your password, click [Change password] button.

User ID	tenant_admin01
Description	
Role	tenant_admin

Personal Information

E-mail address	tenant_user01@example.com
Name	John N Smith
Company name or organization name	

Emergency Contact Information

E-mail address	
Telephone number	

Close    Modify account    Change password

**Options**

Sets the [Home] Tab as the window displayed at login.

Figure 2.12 An Example of the Option Window

**Options** [X]

? Verify the settings below and click the "OK" button to reflect the changes.

Always display the Home tab after login

OK    Cancel

**Help**

Displays this product's manuals.

Figure 2.13 An Example of the Help Window

**FUJITSU Software**  
**ServerView**  
**Resource Orchestrator V3.4.0**

**Manuals**

**Common to Express/Virtual Edition/Cloud Edition**

**Preface**

- Documentation Road Map [HTML](#) [PDF](#)
- Release Notes [HTML](#) [PDF](#)
- Overview [HTML](#) [PDF](#)

**Reference**

- Messages [HTML](#) [PDF](#)
- Troubleshooting [HTML](#) [PDF](#)
- Glossary [HTML](#) [PDF](#)
- Windows PE Creation Script Guide [HTML](#) [PDF](#)

**Express/Virtual Edition**

**Design**

- Design Guide [HTML](#) [PDF](#)

**Setup**

- Setup Guide [HTML](#) [PDF](#)

**Operation**

- Operation Guide [HTML](#) [PDF](#)
- User's Guide [HTML](#) [PDF](#)

**Reference**

- Reference Guide (Command) [HTML](#) [PDF](#)

**Transferring to the quarantine network and recovery [Windows Manager]**

- [VMware] Automatic Quarantining Function Setup Guide [PDF](#)
- [Hyper-V] Automatic Quarantining Function Setup Guide [PDF](#)
- [Citrix Xen] Automatic Quarantining Function Setup Guide [PDF](#)
- Automatic Quarantining Function User's Guide [HTML](#) [PDF](#)

**Cloud Edition**

**Design**

- Design Guide [HTML](#) [PDF](#)

**Setup**

- Quick Start Guide [HTML](#) [PDF](#)
- Setup Guide [HTML](#) [PDF](#)

**Operation**

- Operation Guide [HTML](#) [PDF](#)
- User's Guide for Infrastructure Administrators [HTML](#) [PDF](#)
- User's Guide for Infrastructure Administrators (Resource Management) [HTML](#) [PDF](#)
- User's Guide for Tenant Administrators [HTML](#) [PDF](#)
- User's Guide for Tenant Users [HTML](#) [PDF](#)
- User's Guide for Infrastructure Administrators(Compatibility View) [HTML](#) [PDF](#)
- User's Guide for Tenant Administrators(Compatibility View) [HTML](#) [PDF](#)
- User's Guide for Tenant Users(Compatibility View) [HTML](#) [PDF](#)

**Reference**

- Reference Guide (Command/XML) [HTML](#) [PDF](#)
- Reference Guide (API) [HTML](#) [PDF](#)

**Options**

- DR Option Instruction [HTML](#) [PDF](#)

**VMware NSX**

- VMware NSX Usage Guide [HTML](#) [PDF](#)

[Top of Page](#)

In order to search and refer to the PDF manuals, Adobe (R) Reader (R) or Adobe(R) Acrobat(R) Reader(R) DC (free of charge) from Adobe Systems, Inc. is necessary. [Adobe Reader Download Page](#)

Copyright 2010-2019 FUJITSU LIMITED - Resolving All Products