

FUJITSU Software

Systemwalker Desktop Patrol

A decorative horizontal band with a red-to-dark-red gradient, featuring abstract, glowing white and red lines that swirl and intersect, creating a sense of motion and technology.

Release Information

Windows

B1WD-3285-07ENZ0(00)
March 2018

Preface

Purpose of this guide

This guide explains the additional functions, improved functions, and incompatibilities for the following product.

- Systemwalker Desktop Patrol V15.2.0

Systemwalker is a generic name for the distributed system management product provided by Fujitsu Limited.

Intended readers

This guide is for the following readers.

- Those who wish to learn about the additional functions and improved functions of Systemwalker Desktop Patrol.
- Those who wish to learn about the incompatibilities of Systemwalker Desktop Patrol.

Structure of this guide

The structure of this guide is as follows:

[1.1 Functions Added and Modified in this Version](#)

This chapter describes the functions that are added or modified when Systemwalker Desktop Patrol is upgraded to this version, and also describes the functions that were added or modified in previous versions.

[Chapter 2 List of Incompatible Items](#)

This chapter describes items that become incompatible with Systemwalker Desktop Patrol after a version upgrade.

[Chapter 3 Migration to This Product](#)

[Appendix A Term Table](#)

This appendix lists the terms changed in Systemwalker Desktop Patrol V14.2.0 or later.

[Appendix B Window Operation Table](#)

This appendix lists the operations changed between Systemwalker Desktop Patrol V13.2.0 and V14.2.0.

Location of this guide

In Systemwalker Desktop Patrol manual, location of this guide is shown as follows.

Manual Name	Contents
Release Information (this guide)	Functions modified and added to Systemwalker Desktop Patrol, and items that become incompatible after a version upgrade.
User's Guide	Basic knowledge of Systemwalker Desktop Patrol, such as overview, features, functions, etc.
Installation Guide	How to perform installation settings, change operation environment, maintain and manage Systemwalker Desktop Patrol.
Operation Guide: for Administrators	How to collect PC information, install security patches, distribute software, license management, management ledger, and environment setup of Systemwalker Desktop Patrol.
Operation Guide: for Clients	How to install, operate and change the settings of the client side. In addition, it explains how to handle error messages output from client side.

Manual Name	Contents
Reference Manual	Commands, files and port numbers used in Systemwalker Desktop Patrol. In addition, it explains how to handle error message output from Systemwalker Desktop Patrol.
Centralized Management Guide	How to centrally manage Systemwalker Desktop Patrol deployed at sites within and outside Japan.

Also, the following manuals are enclosed as Systemwalker Live Help manuals. Refer to them when you use the remote operation function (Systemwalker Live Help Function).

Manual Name	Contents
Systemwalker Live Help User's Guide	It explains how to install Systemwalker Live Help, how to use the hardware and software and set the support center. In addition, it also explains how to manage by Live Help Connection Manager.
Systemwalker Live Help Client Guide	It explains how to install, use and set Systemwalker Live Help Client.

Symbols used in this guide

This guide uses the following names, symbols and abbreviations for explications.

Symbols used in commands

This subsection describes the symbols used in the examples of commands.

Meaning of symbols

Symbol	Meaning
[]	Indicates that the items enclosed in these brackets can be omitted.
	Indicates that one of the items separated by this symbol should be specified.
{ }	Indicates that one of the items enclosed in these symbols should be specified.

Symbols used in this guide

The following symbols are used in this guide.

Meaning of symbols

Symbol	Meaning
<i>n</i>	Indicates variable value.



Note

Indicates an item requires special attention.



Point

Indicates useful information.

DTP installation directory

The directory in which Systemwalker Desktop Patrol CS, Systemwalker Desktop Patrol DS, Systemwalker Desktop Patrol AC, Systemwalker Desktop Patrol ADT, Systemwalker Desktop Patrol CT or Systemwalker Desktop Patrol SS is installed is indicated as the DTP installation directory.

Abbreviations

In this guide, the product names are abbreviated as follows.

Product Name	Abbreviation
Systemwalker Desktop Patrol CS	CS
Systemwalker Desktop Patrol DS	DS
Systemwalker Desktop Patrol AC	AC
Systemwalker Desktop Patrol ADT	ADT
Systemwalker Desktop Patrol CT	CT
Systemwalker Desktop Patrol SS	SS
Systemwalker Desktop Patrol Client	Smart device CT
Systemwalker Live Help	Live Help

In this guide, the operating system names are abbreviated as follows.

Abbreviation	Full Name
Windows Server 2016	Microsoft(R) Windows Server(R) 2016 Datacenter Microsoft(R) Windows Server(R) 2016 Standard Microsoft(R) Windows Server(R) 2016 Essentials
Windows Server 2012 R2	Microsoft(R) Windows Server(R) 2012 R2 Standard Microsoft(R) Windows Server(R) 2012 R2 Essentials Microsoft(R) Windows Server(R) 2012 R2 Foundation Microsoft(R) Windows Server(R) 2012 R2 Datacenter
Windows Server 2012	Microsoft(R) Windows Server(R) 2012 Standard Microsoft(R) Windows Server(R) 2012 Essentials Microsoft(R) Windows Server(R) 2012 Foundation Microsoft(R) Windows Server(R) 2012 Datacenter Microsoft(R) Windows Server(R) 2012 R2 Standard Microsoft(R) Windows Server(R) 2012 R2 Essentials Microsoft(R) Windows Server(R) 2012 R2 Foundation Microsoft(R) Windows Server(R) 2012 R2 Datacenter
Windows Server 2008 R2	Microsoft(R) Windows Server(R) 2008 R2 Foundation Microsoft(R) Windows Server(R) 2008 R2 Standard Microsoft(R) Windows Server(R) 2008 R2 Enterprise
Windows Server 2008	Microsoft(R) Windows Server(R) 2008 Foundation Microsoft(R) Windows Server(R) 2008 Standard Microsoft(R) Windows Server(R) 2008 Enterprise Microsoft(R) Windows Server(R) 2008 Standard without Hyper-V(TM) Microsoft(R) Windows Server(R) 2008 Enterprise without Hyper-V(TM) Microsoft(R) Windows Server(R) 2008 Standard 64-bit Edition Microsoft(R) Windows Server(R) 2008 Enterprise 64-bit Edition Microsoft(R) Windows Server(R) 2008 Standard without Hyper-V(TM) 64-bit Edition Microsoft(R) Windows Server(R) 2008 Enterprise without Hyper-V(TM) 64-bit Edition Microsoft(R) Windows Server(R) 2008 R2 Foundation

Abbreviation	Full Name
	Microsoft(R) Windows Server(R) 2008 R2 Standard Microsoft(R) Windows Server(R) 2008 R2 Enterprise
Windows 10	Windows(R) 10 Home Windows(R) 10 Pro Windows(R) 10 Enterprise Windows(R) 10 Education Windows(R) 10 Home 64-bit Edition Windows(R) 10 Pro 64-bit Edition Windows(R) 10 Enterprise 64-bit Edition Windows(R) 10 Education 64-bit Edition
Windows 8.1	Windows(R) 8.1 Windows(R) 8.1 Pro Windows(R) 8.1 Enterprise Windows(R) 8.1 64-bit Edition Windows(R) 8.1 Pro 64-bit Edition Windows(R) 8.1 Enterprise 64-bit Edition
Windows 7	Windows(R) 7 Enterprise Windows(R) 7 Ultimate Windows(R) 7 Professional Windows(R) 7 Home Premium Windows(R) 7 Enterprise 64-bit Edition Windows(R) 7 Ultimate 64-bit Edition Windows(R) 7 Professional 64-bit Edition Windows(R) 7 Home Premium 64-bit Edition
Windows	Microsoft(R) Windows Server(R) 2016 Datacenter Microsoft(R) Windows Server(R) 2016 Standard Microsoft(R) Windows Server(R) 2016 Essentials Microsoft(R) Windows Server(R) 2012 R2 Standard Microsoft(R) Windows Server(R) 2012 R2 Essentials Microsoft(R) Windows Server(R) 2012 R2 Foundation Microsoft(R) Windows Server(R) 2012 R2 Datacenter Microsoft(R) Windows Server(R) 2012 Standard Microsoft(R) Windows Server(R) 2012 Essentials Microsoft(R) Windows Server(R) 2012 Foundation Microsoft(R) Windows Server(R) 2012 Datacenter Microsoft(R) Windows Server(R) 2008 Foundation Microsoft(R) Windows Server(R) 2008 Standard Microsoft(R) Windows Server(R) 2008 Enterprise Microsoft(R) Windows Server(R) 2008 Standard without Hyper-V(TM) Microsoft(R) Windows Server(R) 2008 Enterprise without Hyper-V(TM) Microsoft(R) Windows Server(R) 2008 Standard 64-bit Edition Microsoft(R) Windows Server(R) 2008 Enterprise 64-bit Edition Microsoft(R) Windows Server(R) 2008 Standard without Hyper-V(TM) 64-bit Edition Microsoft(R) Windows Server(R) 2008 Enterprise without Hyper-V(TM) 64-bit Edition Microsoft(R) Windows Server(R) 2008 R2 Foundation Microsoft(R) Windows Server(R) 2008 R2 Standard Microsoft(R) Windows Server(R) 2008 R2 Enterprise Windows(R) 10 Home Windows(R) 10 Pro Windows(R) 10 Enterprise Windows(R) 10 Education Windows(R) 10 Home 64-bit Edition Windows(R) 10 Pro 64-bit Edition

Abbreviation	Full Name
	Windows(R) 10 Enterprise 64-bit Edition Windows(R) 10 Education 64-bit Edition Windows(R) 8.1 Windows(R) 8.1 Pro Windows(R) 8.1 Enterprise Windows(R) 8.1 64-bit Edition Windows(R) 8.1 Pro 64-bit Edition Windows(R) 8.1 Enterprise 64-bit Edition Windows(R) 7 Enterprise Windows(R) 7 Ultimate Windows(R) 7 Professional Windows(R) 7 Home Premium Windows(R) 7 Enterprise 64-bit Edition Windows(R) 7 Ultimate 64-bit Edition Windows(R) 7 Professional 64-bit Edition Windows(R) 7 Home Premium 64-bit Edition
IIS	Internet Information Services 7.0 Internet Information Services 7.5 Internet Information Services 8.0 Internet Information Services 8.5 Internet Information Services 10.0
IE	Windows(R) Internet Explorer(R) 9 Windows(R) Internet Explorer(R) 10 Windows(R) Internet Explorer(R) 11
Edge	Microsoft Edge(TM)
Android	Android(TM) 4.4 - Android(TM) 8.0
iOS	iOS 6.0 - iOS 11.0

Shortcuts in the Start window of Windows(R) 8.1 and Windows Server(R) 2012

To check which product a shortcut in the **Start** window is for, right-click the shortcut and click **Open File Location** from the menu at the screen. This will open the file location in **Windows Explorer**, where the product name can be checked.

Halfwidth characters

In this guide, the "halfwidth characters to be handled" refer to the following ASCII characters, except in places where limitations for the halfwidth characters that can be used are described.

- Halfwidth spaces
- Halfwidth symbols
!"#\$%&'()*+,-./:;<=>?@[\\]^_`{|}~
- Halfwidth numbers
0 1 ... 9
- Halfwidth alphabetic characters
A B ... Z
a b ... z

Characters other than the above are treated as fullwidth characters.

Version notation

The following versions of this product do not have an English version - ignore references to them.

- Systemwalker Desktop Patrol V12.0L10

- Systemwalker Desktop Patrol V13.3.0
- Systemwalker Desktop Patrol V14.0.0
- Systemwalker Desktop Patrol V14.0.1
- Systemwalker Desktop Patrol V14.1.0
- Systemwalker Desktop Patrol V14.3.0
- Systemwalker Desktop Patrol V14.3.1
- Systemwalker Desktop Patrol V15.0.0
- Systemwalker Desktop Patrol V15.0.1

For example, read "V15.0.1 or later" as "V14.2.0 or later", because V15.0.1 does not have an English version.

Likewise, read "V14.0.0 or earlier" as "V13.2.0 or earlier", because V14.0.0 does not have an English version.

The table below shows the available versions:

Japanese version	English version
V11.0L10	V11.0L10
V12.0L10	V11.0L10
V13.0.0	V13.0.0
V13.2.0/V13.2.1	V13.2.0
V13.3.0	V13.2.0
V14.0.0/V14.0.1	V13.2.0
V14.1.0	V13.2.0
V14.2.0	V14.2.0
V14.3.0	V14.2.0
V14.3.1	V14.2.0
V15.0.0	V14.2.0
V15.0.1	V14.2.0
V15.1.0	V15.1.0
V15.1.1	V15.1.1
V15.1.3	V15.1.3
V15.2.0	V15.2.0

Export management regulations

Exportation/release of this document may require necessary procedures in accordance with the regulations of your resident country and/or US export control laws.

Trademark

Intel, Intel vPro and Centrino are trademarks or registered trademarks of Intel Corporation or its subsidiaries in the United States and other countries.

Microsoft, Windows, Windows NT, Windows Vista, Windows Server, Active Directory and names or product names of other Microsoft's products are registered trademarks of Microsoft Corporation in the United States and other countries

Oracle is the registered trademark of Oracle Corporation.

Symantec, the Symantec logo, and Norton AntiVirus are registered trademarks of Symantec Corporation in the United States.

VirusBuster is registered trademark of Trendmicro Ltd.

VirusScan and NetShield are trademarks or registered trademarks of Network Associate, Inc. or its affiliates.

Google, the Google logo, Android, the Android logo, Google Play, the Google Play logo, Gmail, and the Gmail logo are trademarks or registered trademarks of Google Inc.

Wi-Fi is a registered trademark of Wi-Fi Alliance.

IOS is a trademark or registered trademark of Cisco in the U.S. and other countries and is used under license.

Apple, the Apple logo, and Mac OS are trademarks of Apple Inc., registered in the United States and other countries.

All other trademarks are the property of their respective owners.

Screen shots are used in accordance with Microsoft Corporation's guidelines.

March 2018

First edition, July 2015
Second edition, November 2015
Third edition, February 2017
Fourth edition, March 2018

Copyright 2002 - 2018 FUJITSU LIMITED

Contents

Chapter 1 Overview of Added and Modified Functions.....	1
1.1 Functions Added and Modified in this Version.....	1
1.2 Overview of Functions Added and Modified in Previous Versions.....	2
1.2.1 Modified Functions in V15.1.3.....	2
1.2.2 Modified Functions in V15.1.1.....	4
1.2.3 Added and Modified Functions in V15.1.0.....	4
1.2.4 Added and Modified Functions in V14.2.0.....	8
1.2.5 Added and Modified Functions in V13.2.0.....	23
Chapter 2 List of Incompatible Items.....	28
2.1 Upgrade from V13.2.0.....	28
2.1.1 Incompatible Operating Environment.....	28
2.1.2 Function Incompatibility.....	29
2.2 Upgrade from V14.2.0.....	31
2.2.1 Incompatible Operating Environment.....	31
2.2.2 Function Incompatibility.....	34
2.3 Upgrade from V15.1.0.....	36
2.4 Upgrade from V15.1.1.....	37
2.4.1 Function Incompatibility.....	37
2.5 Upgrade from V15.1.3.....	37
2.5.1 Incompatibilities in the Operating Environment.....	37
2.5.2 Function Incompatibility.....	39
Chapter 3 Migration to This Product.....	44
Appendix A Term Table.....	45
Appendix B Window Operation Table.....	48
B.1 MC Window in Earlier Versions.....	48

Chapter 1 Overview of Added and Modified Functions

This chapter describes the functions added or modified in different versions of Systemwalker Desktop Patrol.

- [1.1 Functions Added and Modified in this Version](#)
- [1.2 Overview of Functions Added and Modified in Previous Versions](#)

1.1 Functions Added and Modified in this Version

This section describes the functions added and modified in Systemwalker Desktop Patrol V15.2.0.

Additional operating systems supported

The following operating systems are now supported:

- Android 8.0
- iOS 11.0

Refer to "Operating System" in the *User's Guide* for details.

Additional virtual operating systems supported

The following virtual operating systems are now supported:

- CT/AC/ADT
 - VMware Horizon 7.1
 - VMware Horizon 7.2
 - Citrix XenDesktop 7.12
 - Citrix XenDesktop 7.13
 - Citrix XenDesktop 7.14
 - Citrix XenDesktop 7.15

Management Ledger feature improvements

The following features of the Management Ledger have been enhanced:

- Addition of information collection/collection timing in the history management

Information collection and collection timing have been added to the history information collected when there are changes to the device information in the management ledger.

- Addition of information collection

The information (user ID) of the operator (system administrator, section administrator) who registered or made changes to a device, is now collected.

- Addition of collection timing

- Information is now collected when manual stocktaking operations (set as inventoried, set as uninventoried) are performed for a device.

- Information is now collected when stocktaking decisions (during autosync) are made automatically.

- Support for standard users in the management ledger web display

Standard users with user account operating privileges can also view information on devices other than PCs, such as network devices and printers that they own, in the web display of the management ledger.

- Display of device list/details window of computer names

Display of computer names collected in the inventory information has been added in the device list/details window of the management ledger.

- CSV export of unregistered devices

The same information as that in the unregistered device list window can be exported to a CSV file.

- Error file export when registration fails

Error files can be exported when registration of asset information registration/changes fails.

Display of write-protected information

Write-protected information notified from CT can be collected as inventory information and displayed by selecting **PC Information > Inventory Information** from the main menu. Write-protected information can also be displayed in the **PC List** of **Inventory Information** if you add Write Protection to **Visible Column(s)** in the **Display Item Settings** window.

Display item	Description
Enabled	The Windows "Unified Write Filter" feature is installed, and Filter state Is set to "On".
Disabled	The Windows "Unified Write Filter" feature is installed, and Filter state Is set to "Off".
None	The Windows "Unified Write Filter" feature is not installed.

Additionally, the write-protected information can be used to create a policy group.

1.2 Overview of Functions Added and Modified in Previous Versions

This section describes the functions added and modified in previous versions of Systemwalker Desktop Patrol.

1.2.1 Modified Functions in V15.1.3

This section describes the functions changed in Systemwalker Desktop Patrol V15.1.3.

Addition operating systems supported

The following operating systems are supported.

- Windows Server 2016
- Android 7.0
- iOS 9.0 to 10.1

Refer to "Operating System" in the *User's Guide* for details.

Additional required software

The following software products are now required:

- Microsoft Office 2016
- Microsoft Excel 2016
- Microsoft Visio 2016
- Microsoft Edge(TM)
- Internet Information Services 10.0

Refer to "Required Software" in the *User's Guide* for details.

Enhanced Security

Extension of the CT usage environment (connecting from the High Security CT to CS/DS over the Internet (via SS))

It is now possible for CT (High Security CT) to connect to CS/DS via SS over the Internet, by installing SS on the DMZ. Communication between SS and the High Security CT is encrypted as secure communication, for enhanced security.

In line with the enhancement to security described above, the following changes were made:

- Port number 38443 can now be specified for secure communication
- The name of SS (Smartdevice Server) has been changed to SS (Smartdevice and Secure server)

Addition of supported virtual operating systems

The following virtual operating systems are now supported:

- CS/DS
 - VMware vSphere 6
 - VMware vSphere 6.5
- CT/AC/ADT
 - VMware vSphere 6
 - VMware vSphere 6.5
 - VMware Horizon View 6.1
 - VMware Horizon View 6.2
 - VMware Horizon View 7
 - Citrix XenDesktop 7.7
 - Citrix XenDesktop 7.8
 - Citrix XenDesktop 7.9
 - Citrix XenDesktop 7.11

Addition of linkage services

The following services are now supported:

- Virtual desktop service V-DaaS

Other improvements

The following functions have been enhanced:

- Specification of the log output destination for silent installation of servers

The installation log output destination can now be specified when performing silent installation of servers.

- Network bandwidth control between the server (CS/DS) and CT

The network bandwidth can now be controlled between the server (CS/DS) and CT for the following items:

- Distribution of client policies
- Software distribution
- Security patch distribution
- File distribution
- Distribution of the updater
- Inventory information notifications

- Management Ledger

The following features of the Management Ledger have been enhanced:

- Batch deletion of unused classes and types
- Device search method
- Detected device reflection has new commands
- Permissions for collective registration/changing of unregistered users
- Prohibition of notification of device information from undefined segments detected by segment
- Extension of the input area of window item names

1.2.2 Modified Functions in V15.1.1

This section describes the functions modified in Systemwalker Desktop Patrol V15.1.1.

Addition operating systems supported

The following operating systems are supported.

- Windows 10
- Android 5.1
- iOS 8.2 to 8.4

Refer to "Operating System" in the *User's Guide* for details.

1.2.3 Added and Modified Functions in V15.1.0

This section describes the functions modified in Systemwalker Desktop Patrol V15.1.0.

Additional operating systems supported

The following operating systems are now supported:

- Windows Server 2012 R2
- Windows Server 2012
- Windows 8.1
- Windows 8
- Android 3.0 - 5.0
- iOS 5.0 - 8.1

Refer to "Operating System" in the *User's Guide* for details.



-
- The license for Windows 8.1 is included in and managed by the Windows 8 license. It can be upgraded from Windows 8 free of charge, and therefore is managed as the same license.
 - The licenses for Windows Server 2012 R2 and Windows Server 2012 are managed separately. It cannot be upgraded from Windows Server2012 free of charge, and therefore the licenses are managed separately.
 - The licenses can be defined in the Software Dictionary (**Environment Setup** > **Software Auditing** in the main menu) as follows:
 - The license for Windows 8.1 is defined as included in the Windows 8 license.
 - Windows Server 2012 R2 and Windows Server 2012 licenses are defined separately.
-

Additional required software

The following software products are now required:

- Windows Internet Explorer 11
- Windows Internet Explorer 10
- Internet Information Services 8.5
- Internet Information Services 8.0
- Microsoft Office Personal 2013
- Microsoft Office Home and Business 2013
- Microsoft Office Professional 2013
- Microsoft Visio Standard 2013
- Microsoft Visio Professional 2013

Refer to "Required Software" in the *User's Guide* for details.

Smart device management feature

Inventory information on smart devices can now be collected and managed via the main menu and management ledger.

Collecting inventory information

Using smart device CT

Install the smart device CT on smart devices, and collect inventory information. The key inventory information items that can be collected are as follows:

- CT information (CT version, collection datetime, user ID, etc)
- Operating system information (operating system name, build number, Android ID, etc)
- Hardware information (brand name, phone number, memory size, model name, total/available space, etc)
- Wi-Fi information (host name, MAC address, IP address, etc)
- Account information (account type, account name)
- Application information (application name, package name, version)

Viewing and managing collected information

Via the main menu

As system administrator, click **Asset Management** > **Smart Devices** in the main menu, and then one of the following:

- Smart device information
- Application information
- Security information

Via the management ledger

Smart devices registered with **Class** set to "Smart device" and **Type** set to "Client" can be viewed and managed as follows:

- Displaying the Ledger window
- Editing the Ledger
- Outputting as a report

Application distribution to smart devices

Applications can now be distributed to smart devices (Android and iOS devices).

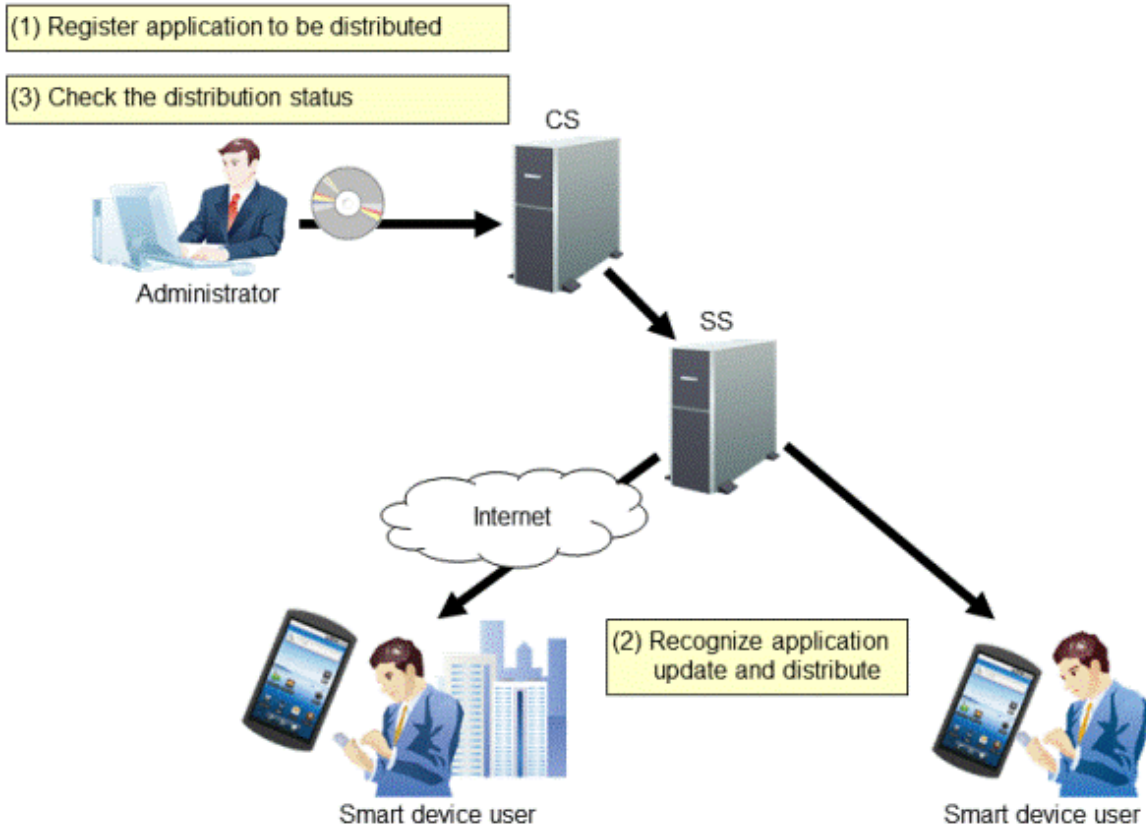
Note

The Android native application (apk file) or the iOS native application (ipa file and manifest file) can be distributed.

The administrator can perform the following management tasks from the main menu.

- Distribute a specific application to the smart device.
- Check the installation status of application on the smart device.

The smart device user, however, must approve the installation of the distributed application.



IPv6-supported

In addition to IPv4 environments, IPv6-only environments and IPv4 and IPv6 dual stack environments are also supported now. As a result, the following are now possible:

- IPv6 communication
- IPv6 network information collection
The collected network information can also be managed via the management ledger.

Simplified CS installation (standard installation)

Two installation types are now provided:

- Standard installation
Uses default values to install and build with ease in environments with up to 300 managed devices.
- Custom installation
Allows the user to specify values other than default ones for all settings during installation.

Standard installation allows the process from installation to inventory collection to be completed in simple steps. Note that standard installation allows settings for large-scale operations and smart device operations to be changed.

Installer improvements

The installer has been improved in the following ways:

- Improvement in the remote operation function installation

In previous versions, the remote operation function had to be installed separately from CT. In this version, the installer has been improved so that the remote operation function and CT are installed together.

- Improvement in the standard database installation

In previous versions, if Symfoware had been installed in the installation destination environment, co-existing was not possible. In this version, installation has been improved so that this product can be installed or uninstalled regardless of whether Symfoware exists in the installation destination.

Additional display items for the Status window

The following PC/device/contract status can now be checked in the **Status** window (the top window of the main menu).

- PCs on which unlicensed software is installed

Contains the number of PCs in which the software is installed but license is not assigned.

- Expired contracts

Contains the number of expired contracts.

- Contracts about to expire

Contains the number of contracts about to expire.

- Devices for which stocktaking is not yet complete

Contains the number of devices for which stocktaking is not yet completed.

- Devices detected as unregistered devices

Contains the number of devices for which registration is not yet completed.

Here, "unregistered devices" refers to devices that have not been registered in the asset ledger.

GUI for master management (user management information)

In previous versions, a master management information file had to be created and uploaded using either a command or the main menu in order to register, change, and delete the user management information in master management. In this version, the user management information can be registered, changed, and deleted through the main menu operations alone, without having to create a master management information file.

GUI for Active Directory linkage settings

In previous versions, commands had to be used to configure the environment information required for the Active Directory linkage. In this version, the environment setup can be completed through the main menu operations alone.

Monitoring for unauthorized connections

This product provides a function that can auto-detect device information and manage unregistered devices, which allows the user to check the devices that are not registered in the management ledger and keep it up-to-date. In this version, the function to detect the device information has been improved so it can now also be used for monitoring devices connected to without permission (devices that are not managed or authorized in the ledger).

Running files in the background after being distributed

In file distribution, files with the following extensions can now be run in the background:

- ".exe", ".bat", ".msi", ".vbs", ".wsf"

Batch backup and restore

Backup and restore of the operating environment information, registered and distributed software, and database can now be performed in batch.

Native support for 64-bit Windows

Native support is now provided for 64-bit Windows in CS.

Checking the operational status of CS/DS

Operational status of the distribution server function and inventory collection function of CS/DS can now be checked.

Software Asset Management (SAM) support

To support the customer's Software Asset Management that complies with ISO/IEC 19770-1:2006 (the international standards for Software Asset Management) and JIS X0164-1:2010 (the Japanese industrial standards), the following functions have been added:

- SAM support for the license management function
- Importing the SAMAC Software Dictionary

License Validation

This function validates the Systemwalker Desktop Patrol license.

Refer to the *Installation Guide* for details.

Other improvements

The following functions have been improved or enhanced:

- System administrators who do not belong to a section can now use all functions.
- Phone number, fax number, and email address have been added to the **Detail of Device** window.
- The monitoring period can now be set in the **Set Contract Expiration Notification** tab in **Management Ledger Settings** regardless of the schedule settings.
- CT installation in an Active Directory environment
CT can now be extracted and installed in an Active Directory environment.
- CS operation details log output
Detailed information is now output to the CS operation log.

1.2.4 Added and Modified Functions in V14.2.0

This section describes the added and modified functions in Systemwalker Desktop Patrol V14.2.0.

Support mobile PC operation

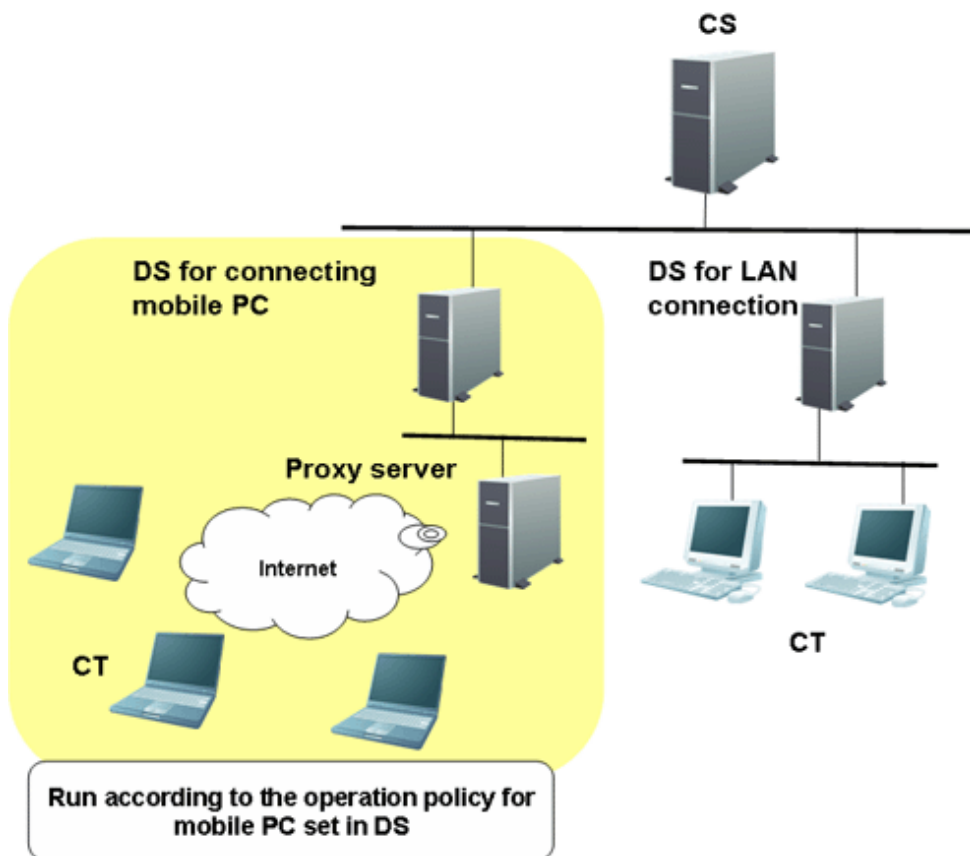
When performing mobile operation by connecting from external used VPN (Virtual Private Network) to the internal part of company, the following operating policies can be set for Systemwalker Desktop Patrol CT on the mobile PC. Through setting operation policy, even in the mobile PC that does not connect to network in usual time, assets management through Systemwalker Desktop Patrol should also be performed.

- Operation policy for assets management of mobile PC
- Operation policy for load reduction of mobile PC

The above settings are used for setting Systemwalker Desktop Patrol DS for mobile connection and performing settings for Systemwalker Desktop Patrol DS as well.

The mobile PC runs through connecting to the Systemwalker Desktop Patrol DS according to the operation policy that has been set.

The image diagram of mobile PC operation is shown below.



Enhance security auditing

Add the following security auditing item and enable auditing by the **PC Information > Security Information** window of "Desktop Patrol Main Menu".

- Hardware
 - Set BIOS hardware password
- OS
 - Set the password of Guest account to audit inappropriate password.
 - Enable/Disable automatic update of Windows Update.
 - Disable/Enable user account control (UAC) of Windows Vista, Windows Server 2008 and Windows 7.
 - Existence of unsafe shared folder.
 - Set password of Windows logon user and audit inappropriate password.
- Application
 - Set firewall
 - Set real time scan of anti-virus software
 - Enable/Disable Google Desktop "Search Data on Multiple Computers"

Detect prohibited application

The application that is prohibited to be used can be confirmed through **PC Information > Software Auditing** of the main menu.

Alternatively, when the prohibited software has been installed, the information can be notified to the administrator through alarm notification function.

Enhance alarm notification function

When software has been added to or deleted from the client, alarm notification of the modification information can be performed.

Patch setting function of policy group

When it is expected to apply security patches selectively to a particular PC, you can select the security patches to be applied in each policy group and perform settings.

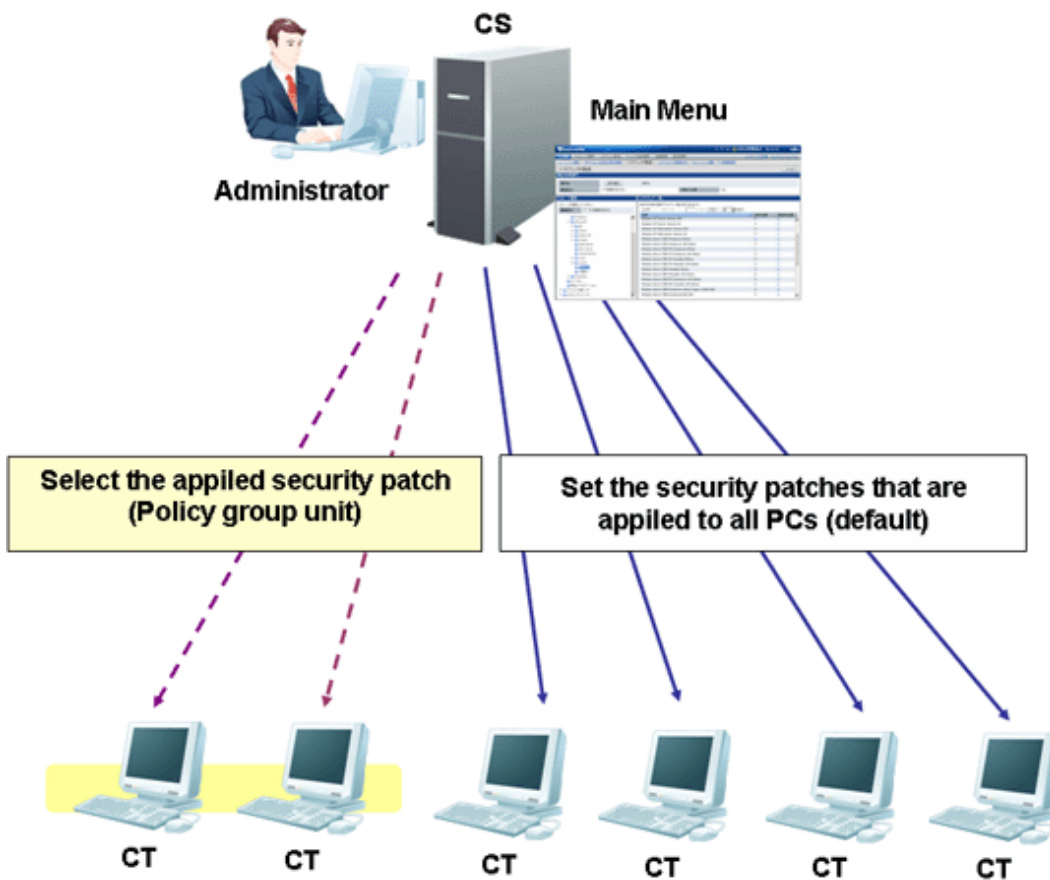
Based on this, for the PC with problem after applying a particular security patch, the exceptional patch can be applied.

When selecting the security patch to be applied, the following settings can be performed.

- Select the settings to apply security patches to a particular PC
- For a particular PC, set not to apply the security patches provided afterwards

The above settings can be used in combination.

The operation image diagram for applying security patches selectively to a particular PC is shown below.



For the PC that does not belong to the policy group, patch application can be performed according to the security patch settings selected in the **Distribution > Distribute Security Patches** window.

To apply security patches selectively to a particular PC, cancel the selection of security patch not to be applied in the **Environment Setup > Policy Groups > Customize Various Policies > Patch Application Policy** tab of the main menu.

Based on this, for PC that belongs to the policy group, it is possible to apply security patches selectively.

Enhance contents execution

The software distribution function has been enhanced.

- Add the file type that can be executed after downloading

Apart from ".exe" and ".bat", the following file type can be specified in executable file after software distribution.

- .msi
- .vbs
- .wsf

Output event log of CS and DS

When the following events occurred in Systemwalker Desktop Patrol CS or Systemwalker Desktop Patrol DS, event log will be output. The event occurred in Systemwalker Desktop Patrol can be audited through Systemwalker Centric Manager and other products.

Category	Description
Information	<ul style="list-style-type: none"> - Start or stop service - Download security patches from the public site of Microsoft
Alarm	When small trouble without any problem will still occur in spite of automatic recovery and continued action
Error	When the exception that affects operation occurred in CS or DS

Collect CS operation log

The operation log through the following window (definition modification, registration, deletion) and login/logout for Systemwalker Desktop Patrol CS can be collected

- Desktop Patrol Main Menu
- Desktop Patrol Download Menu

Patch application at Windows logon

The time of Windows logon has been added to the timing of applying security patches.

Based on this, same as the version of V11.0L10 or earlier, security patches can be applied at the timing of Windows logon.

Auditing/control of power saving and security

PC can be audited according to the power saving/security policy determined by administrator. If policy is violated, the warning will be displayed in the window of PC and user will be reminded for processing.

In addition, the item that violated policy can be modified by force. (Note)

Note) Modification may not be performed by force due to item.

In the auditing/control of power saving and security, the following functions can be used.

- Modification of display/settings of warning window to PC that violates policy by force
- Confirmation of control status of security/power saving according to report output

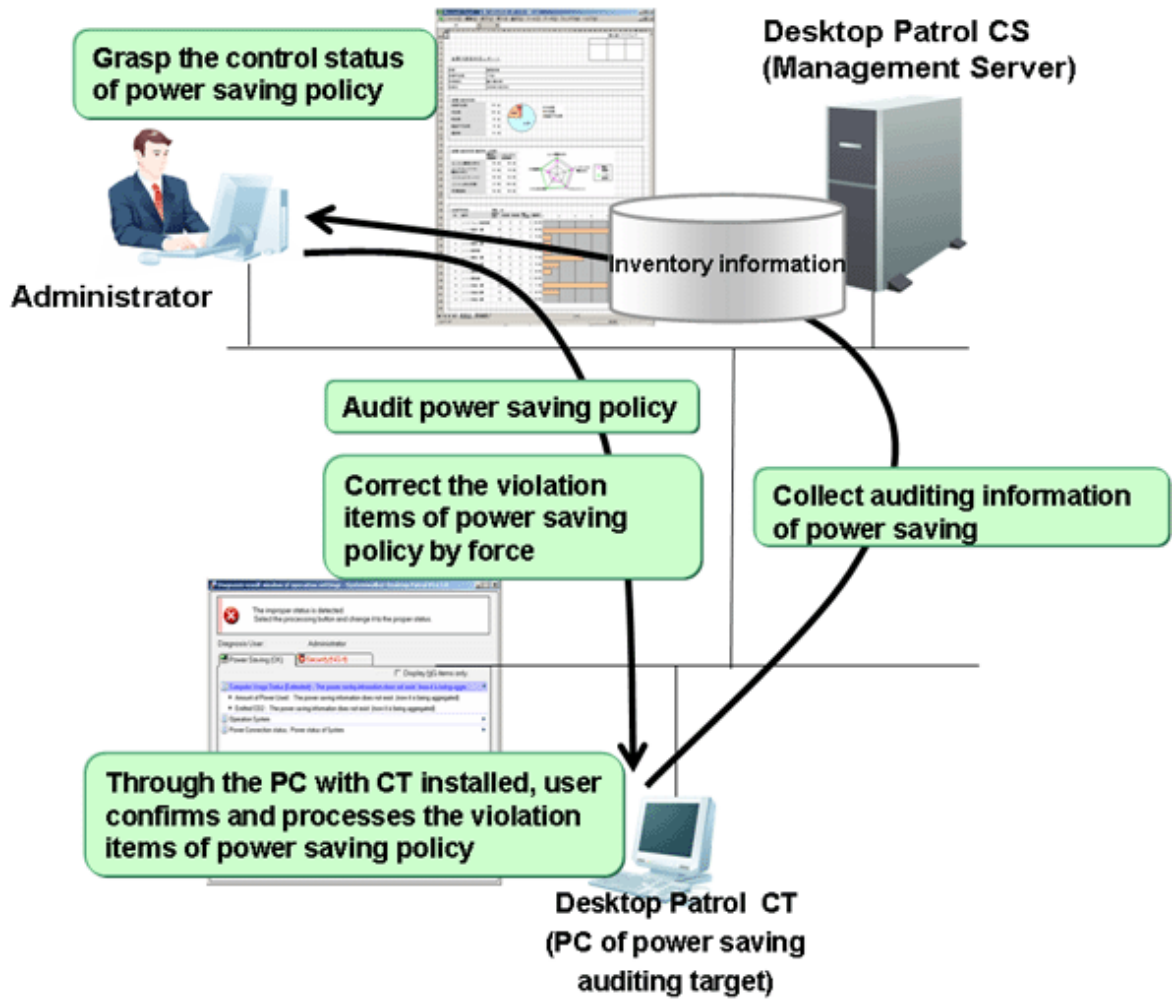
Auditing/control of power saving

The operation summary when performing auditing/control of power saving is shown below.

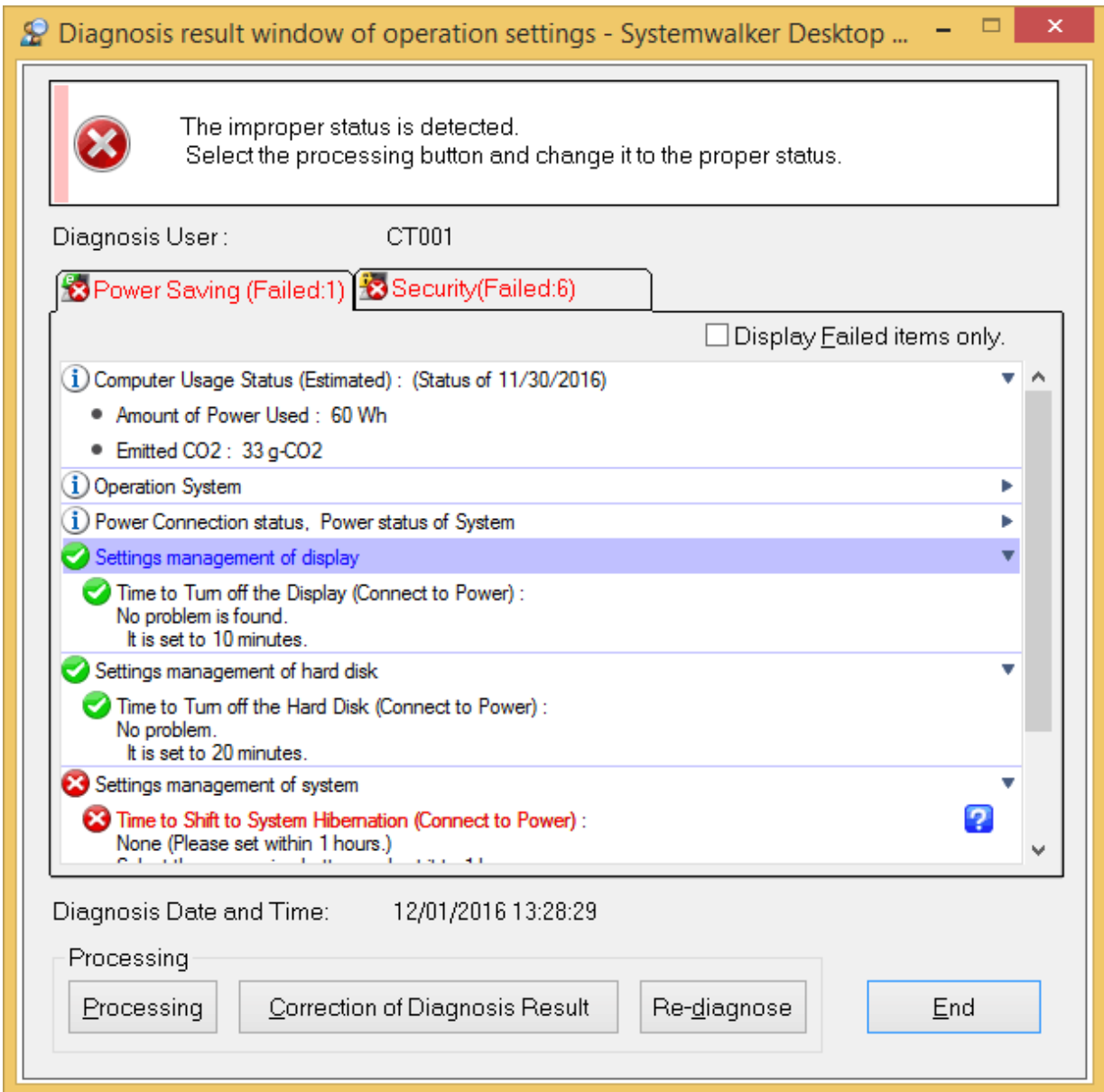
The auditing and control status of power saving and power consumption can be confirmed in the report.

- Power Saving Setting Status Report

- Power Consumption Auditing Report



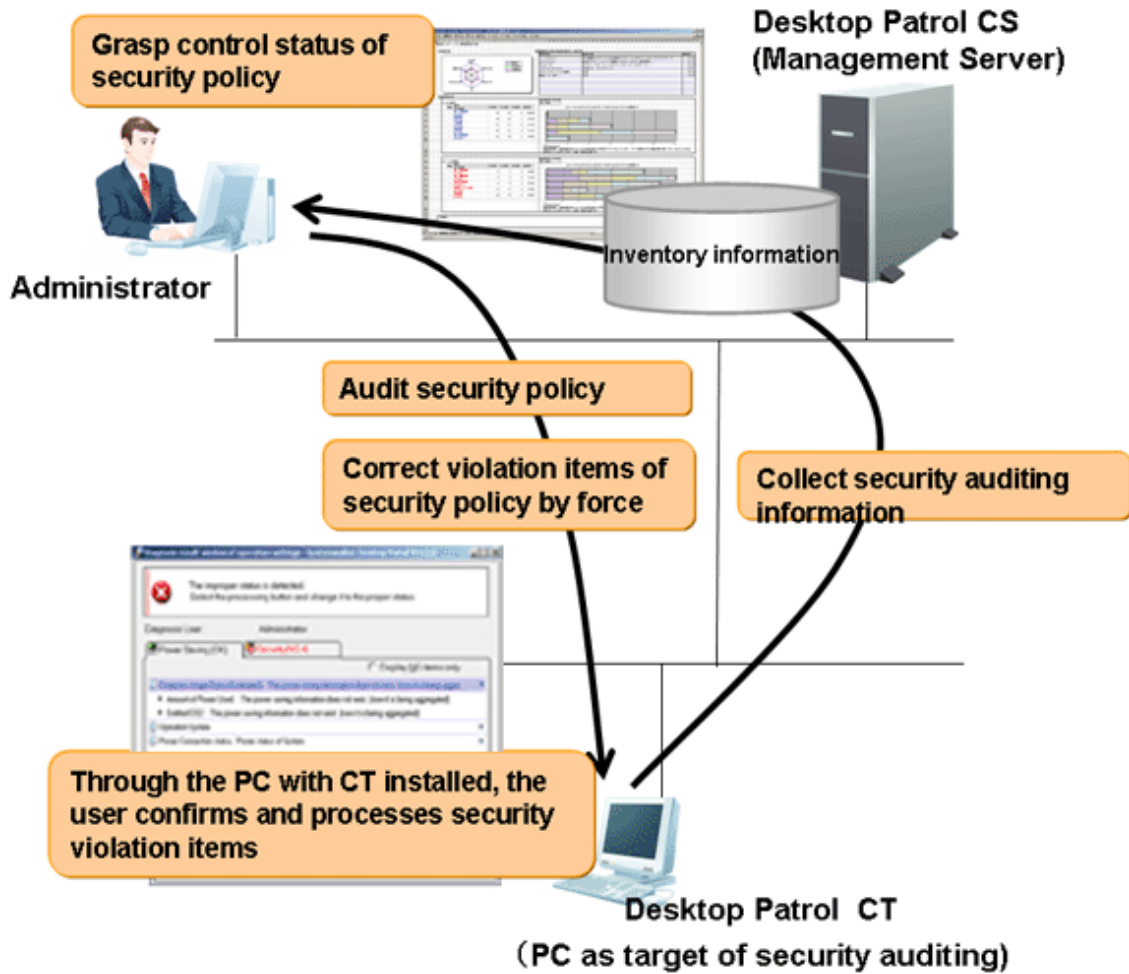
The diagnosis result window of power saving settings displayed at client is shown below.



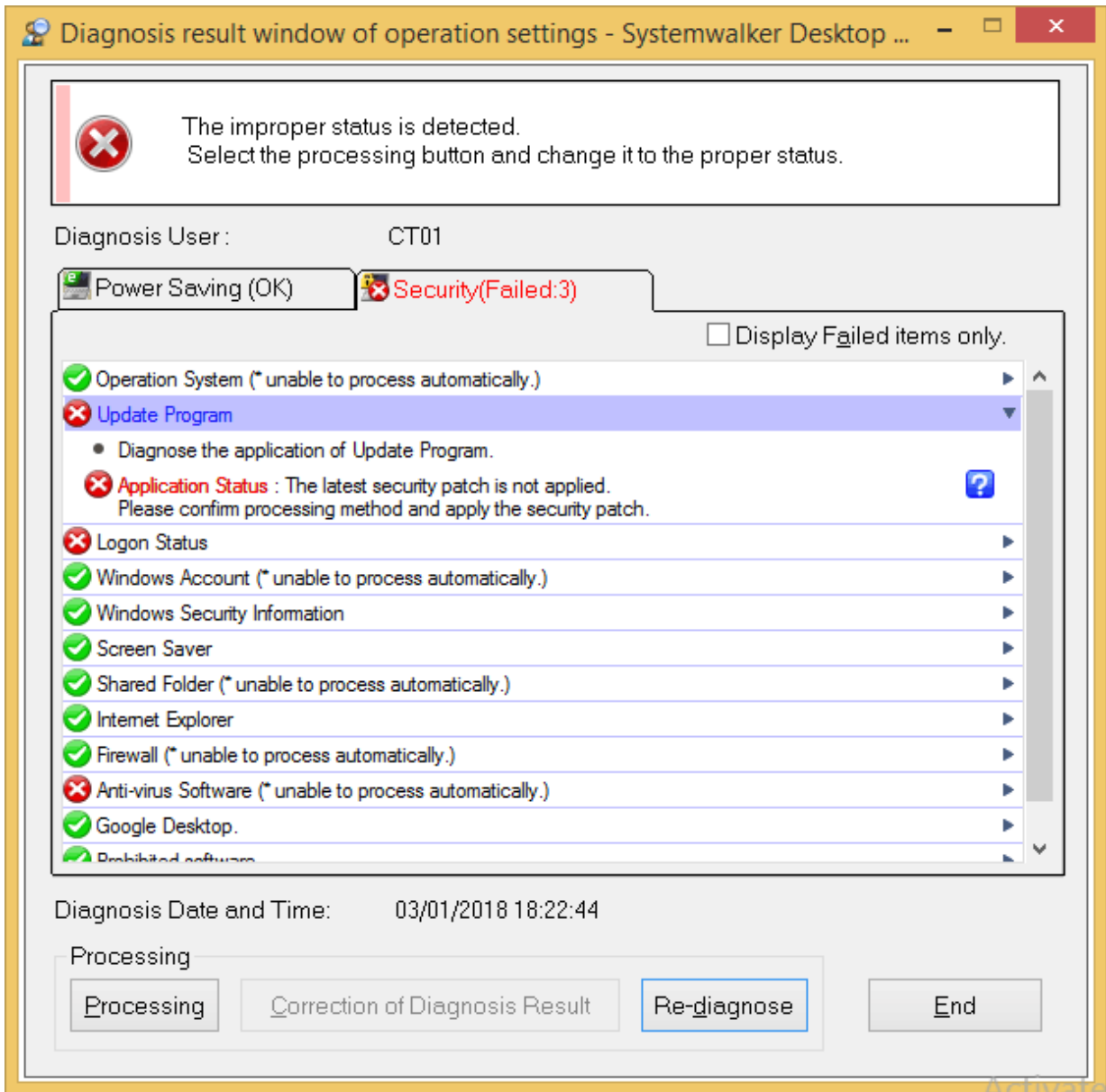
Auditing/control

The operation summary when performing security auditing/control is shown below.

The control status of security policy can be confirmed through security auditing report.



The diagnosis result window of security setting displayed in the client is shown below.



Newly added management ledger function

The following management can be performed through the information collected using Systemwalker Desktop Patrol or the information managed by ledger.

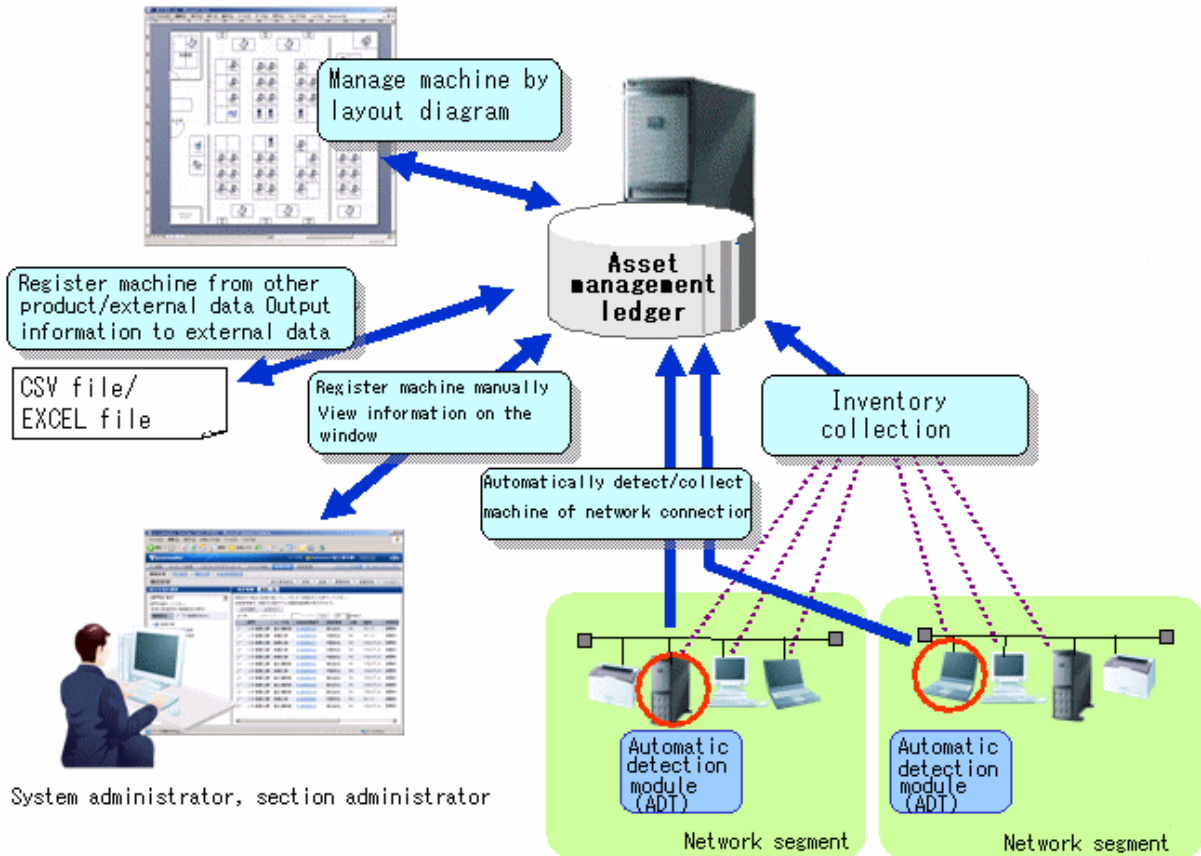
- Device Management Function
- Contract Management Function
- Stocktaking Support Function
- Report Output Function

Device management

For management target device, there are following operations through confirming and operating the asset status of asset status (PC and devices).

- Automatic detection of device information

- Confirmation of device information by section/type/location
- Registration/Modification/Deletion of device information
- Save ledger of device information
- Confirmation of modification history
- Device management through layout diagram
- Creation of assets management ledger from other product

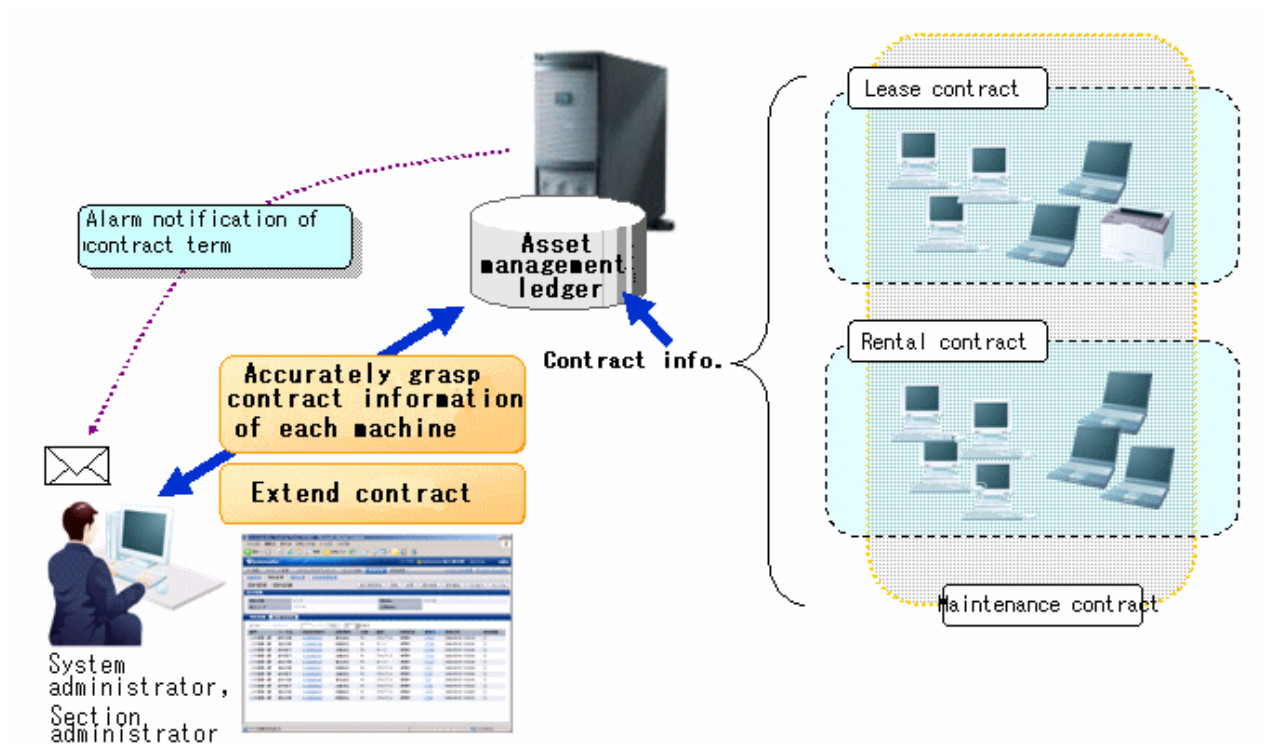


Contract management

There are following operations through the function of managing contract information of management target device.

- Confirmation of contract information by section/type
- Registration/Modification/Deletion of contract information
- Allocation of contract information
- Save ledger of contract information
- Extension of contract

- Alarm notification of contract term

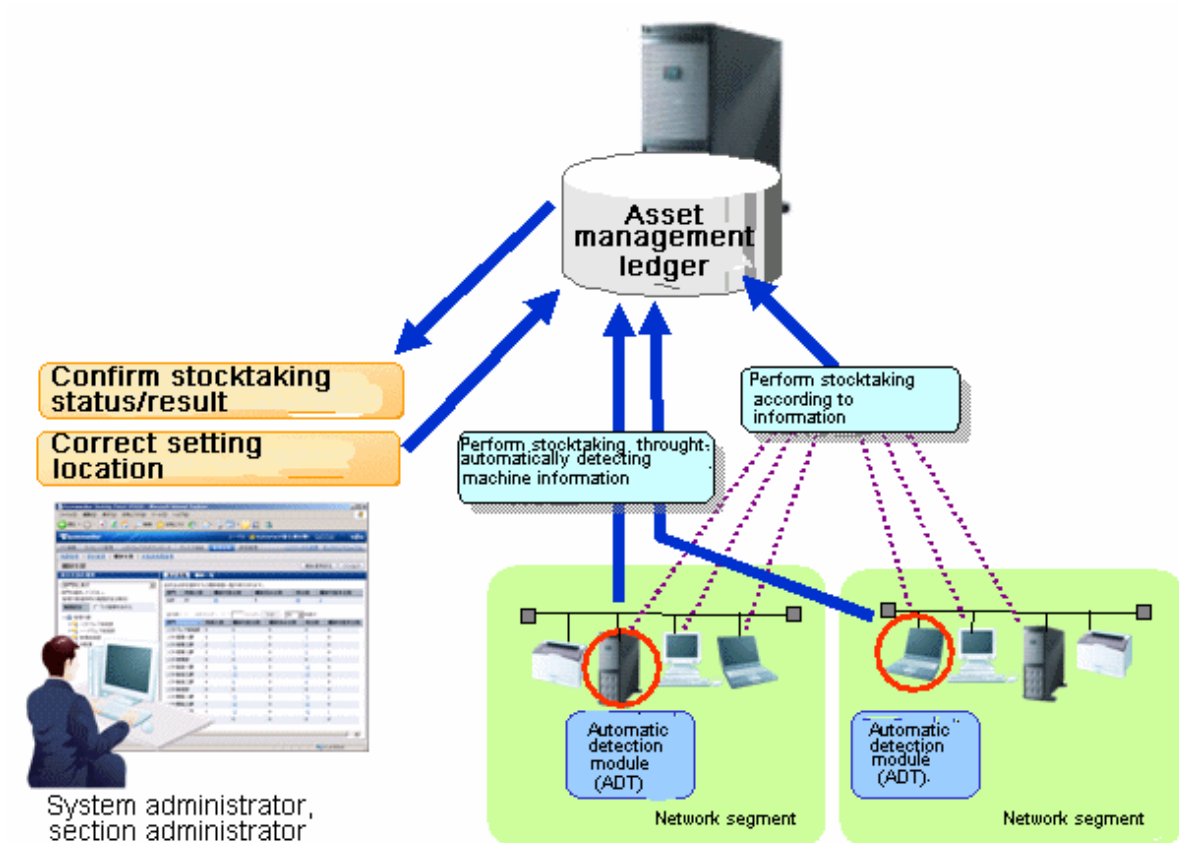


Stocktaking support

There are following operations in the function for supporting the stocktaking of management target device.

- Confirmation of stocktaking status by section/type/location
- Setting of whether stocktaking can be executed

- Save ledger of stocktaking status



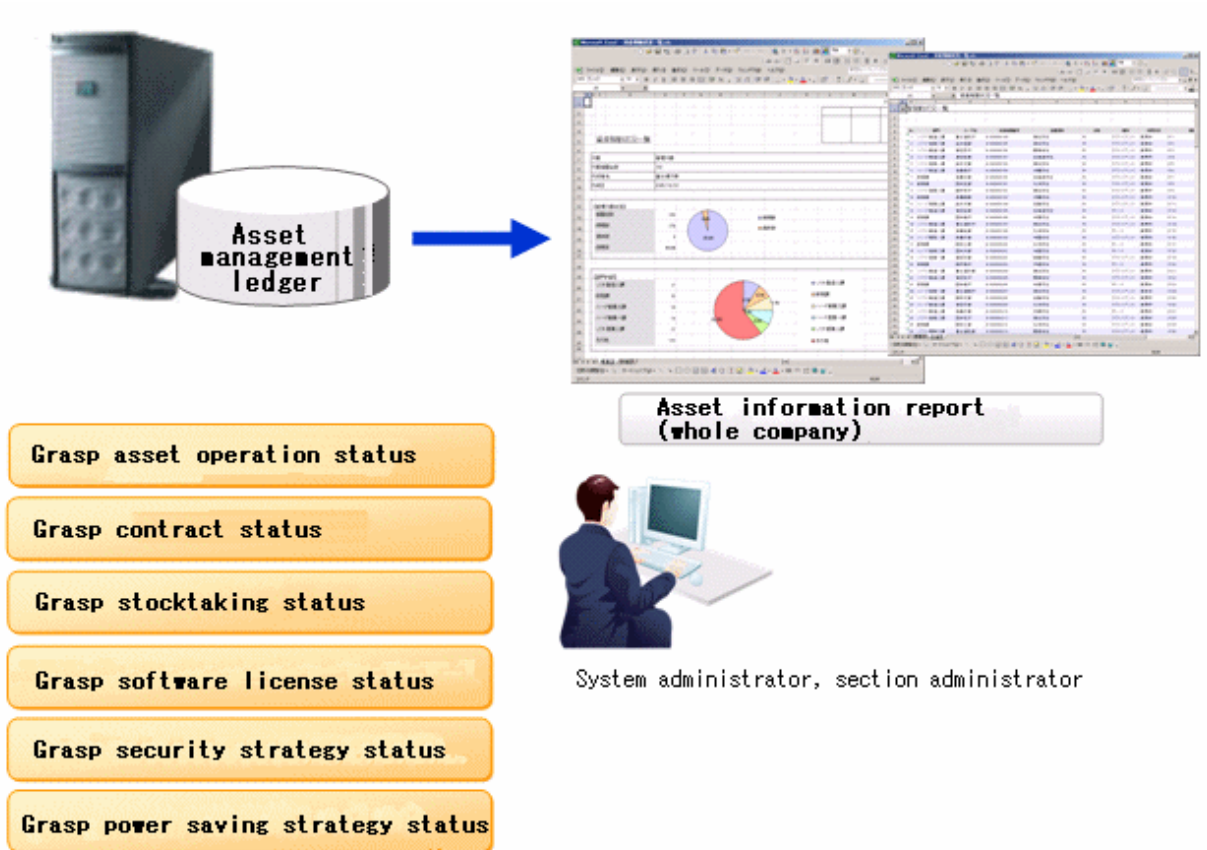
Report output

It is the function of outputting the asset information managed in Systemwalker Desktop Patrol as file or print in report format (Microsoft Excel format). Graphs and tables can be output at the time of outputting report, so that the current status and problems can be known visually.

The following operations can be performed in the output of report format of asset information.

- Output file in report format

- Edit report layout

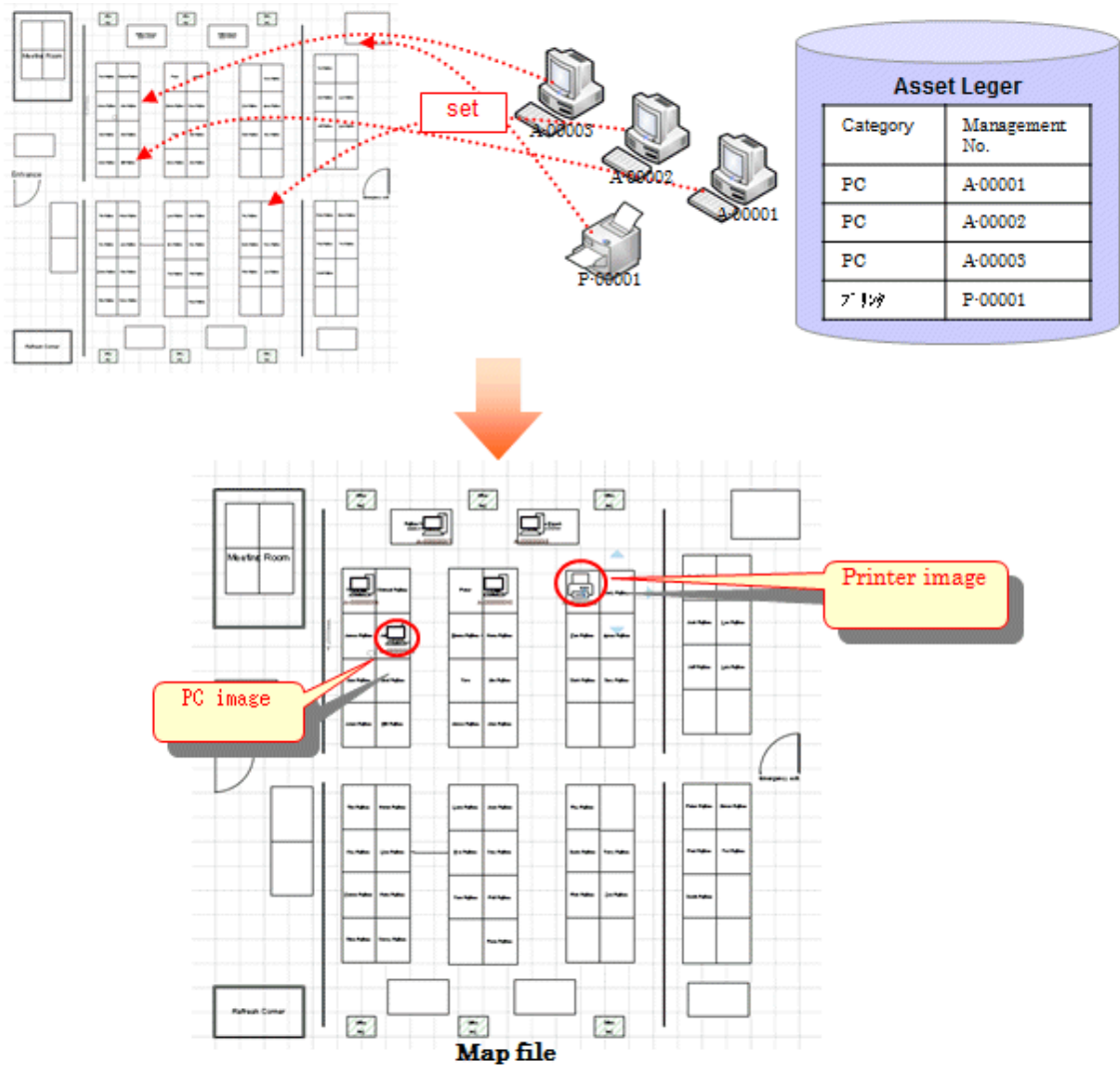


Device management by layout diagram

For the layout diagram that shows the floor image, it can be managed after confirming the managed device in asset ledger.

In the meantime of confirming the configuration of device visually, the asset information of device can be viewed.

When performing the device management based on the layout diagram, Microsoft Visio is required.



Support virtual desktop environment

To use and audit the virtual desktop, support the CT, main menu, and management ledger functions in the following ways.

CT

To install the CT on the virtual desktop,

- Support the link clone environment.
- Support connecting the remote desktop to the terminal server.
- Determine the CT running in the virtual PC, and reflect the power saving and security auditing results.

Main menu

To determine information about the virtual PC, add the following items:

- General PC list visible column(s) on the inventory information page
- Searched items that can be screened in the virtual environment when creating a policy group
- General PC list managed by the policy group
- Initial option **Domain Name** for starting the basic operation policy PC

Report output function

To determine information about the virtual PC, perform the following in the report:

- Set the auditing item **Hardware** in the security auditing report to **Not Auditing**.
- List the power saving status report to **Number of Unaudited PCs**.

Improvement of usability

The improvements of following usability have been performed.

Customization of displayed items of PC list

The items displayed in **PC List** of the **PC Information > Inventory Information** of "Desktop Patrol Main Menu". The modification of displayed item can be set all at once in the system.

Tree view of software list

The software list of the following window of "Desktop Patrol Main Menu" will be displayed in tree view.

- **PC Information > Software Auditing** window

Page supporting list view

The page supports the list view of displayed items in each window of "Desktop Patrol Main Menu".

When there are many displayed items, the number of items displayed in one page can be narrowed down for display.

Integration to Web GUI of MC window

The functions provided through Management Console before Systemwalker Desktop Patrol V13 has been integrated to Web GUI. The operation performed through MC window will no longer require window switch as before. Instead, everything can be operated through the Web window.

Display operation status and usage processing

As the Top window of the main menu, the "Status Window" that displays the operation status of Systemwalker Desktop Patrol in list has been added, based on which the following operations can be achieved.

- The overall status can be known in a short time.
- Since the status including Systemwalker Desktop Keeper will be displayed in the "Status Window" Top window in the system with Systemwalker Desktop Keeper V14.2.0 installed, the status can be known without switching the product window.
- According to the displayed results on the main menu status window, operations such as check and browse the faulty PC are extension to use processing is possible.

The following items can be added:

- Message Sending
- Inventory Collection
- Security Patch Installation
- Security Settings Modification
- Power Saving Settings Modification

Other improved functions

The following functions have been improved/enhanced.

Operation log collection

Systemwalker Desktop Patrol saves users' operations as logs in PCs which are running the CT, and adds a function for collecting such log files.

By confirming the operation log file, the following effects can be implemented.

- Forbid information disclosure
- Operation trace when a fault occurs in the PC

Improve distribution function

- Multiple files can be sent to different PCs through the distribution settings of the CS. Besides, the "File Distribution" function for confirming the distribution result in the CS is provided.
- Specify "Time Segment" in the "Distribute Software" function.
Then, you can distribute software in the specified time segment.
- In order to distribute software more easily to a particular PC, apart from the existing distribution target, the PC group for distribution has been added.
 - PC group for distribution
It is the group for distributing software. Any PC can be registered to the PC group for distribution.
In addition, one PC can also be registered to multiple groups for distribution.
 - Policy group
It is the group for performing operation setting of client. Even policy group, can be specified as the distribution target of software.
 - CS/DS
It is the physical server, which is specified when it is expected to distribute software to PC under CS/DS only.

CT operation status check command

The command that can display the CT operation status in the window has been added.

Based on this, whether CT runs according to the settings of policy set in CT can be confirmed through CS and the window on correspondent CT/

Enhance auditing items of security settings

The auditing items of security settings have been added and modified.

- Settings that require complex password <Add>
Whether the complex password has been specified can be audited.
- The auditing method of Guest account <Modify>
As the auditing method of Guest account, it is allowed to check the enabling/disabling of account only without checking the password.
In addition, the auditing result can be confirmed through the main menu and report.

Browse PC information

The following operations can be performed in the system which is running Systemwalker Desktop Keeper V14.2.0.

- The Systemwalker Desktop Keeper log retrieval page can be invoked by one click on the PC information page of Systemwalker Desktop Patrol.
Therefore, you can trace the operation that is performed on the faulty PC according to the operation logs managed by Systemwalker Desktop Keeper.
- You can also browse the inventory information on the log retrieval page of Systemwalker Desktop Keeper by clicking.
Therefore, the security status of a PC whose files are exported through USB can be easily obtained.

Allowed character expanded for user ID

The underscore "_" can be used as a character for the user ID.

Improve search function

The function modifies from exact retrieval to fuzzy retrieval.

Improve input area for MAC address

The MAC address input area modifies from an 8-bit unit to one input box.

Collect inventory collected through other products

When you run InvSend.exe to import inventory information based on Systemwalker Centric Manager or CSV, the Collection Date/Time will be updated.

Therefore, you can confirm the time when the inventory information is imported by viewing the Collection Date/Time.

1.2.5 Added and Modified Functions in V13.2.0

This section describes the added and modified functions in Systemwalker Desktop Patrol V13.2.0

Active Directory Linkage Function

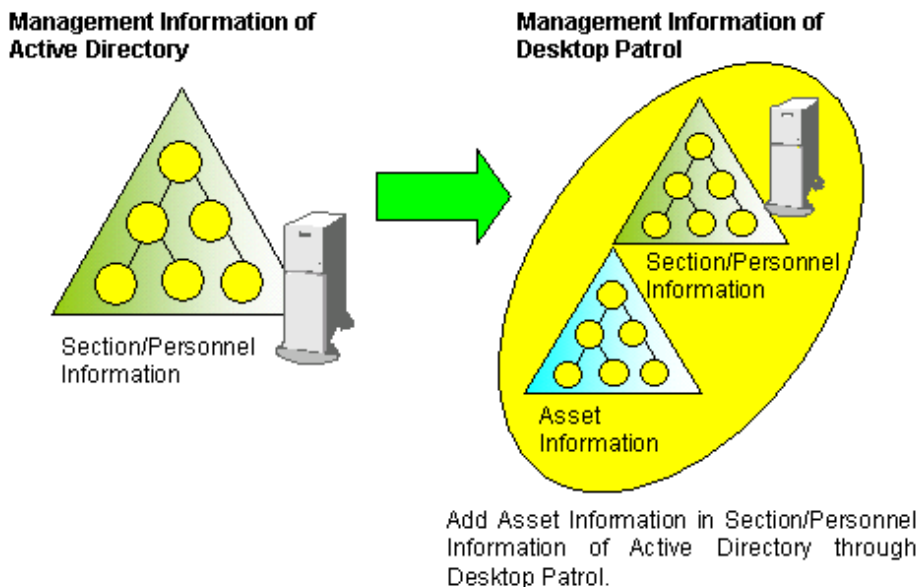
Active Directory is a directory service that manages various resources (PC and printers, user information etc.) on the network more effectively.

Through Active Directory Linkage, Related asset information in the section and personnel information managed by the Active Directory can be managed by Desktop Patrol. Also, since the master data of Desktop Patrol can be generated automatically according to the section and personnel information managed by the Active Directory, the master data of Desktop Patrol can be created without relying on previous procedures, and the information can be managed collectively.

In addition, previous applications that are not linked to the Active Directory may be used together, so you can freely choose the sections that are linked or not linked to the Active Director according to the applications, and deal with the user business flexibly.

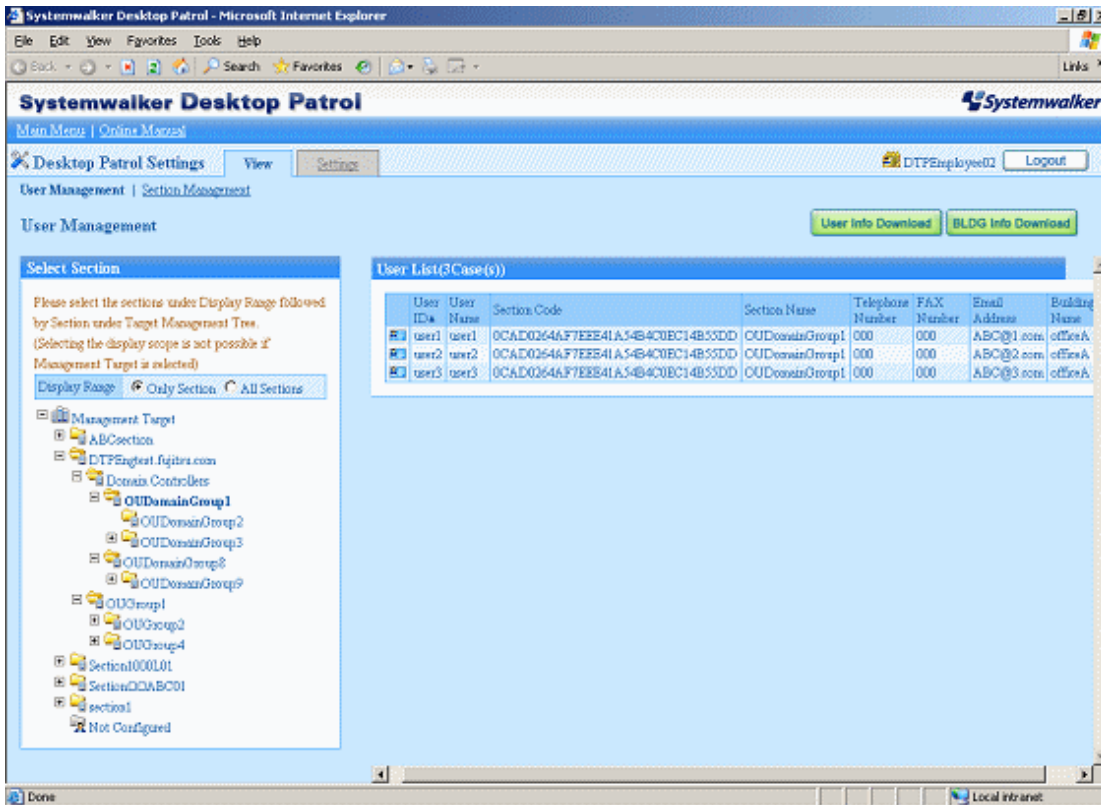
Moreover, the linkage with Active Directory is limited to the circumstances when performing single domain applications. When performing multiple domain applications, it cannot be linked to Desktop Patrol.

An overview of Active Directory linkage functions is shown below.



An example of "Desktop Patrol Main Menu" when linking with the Active Directory is shown below.

The section information obtained through the Active Directory is displayed as the domain name under the section tree of the top level section.



PC Operation Management

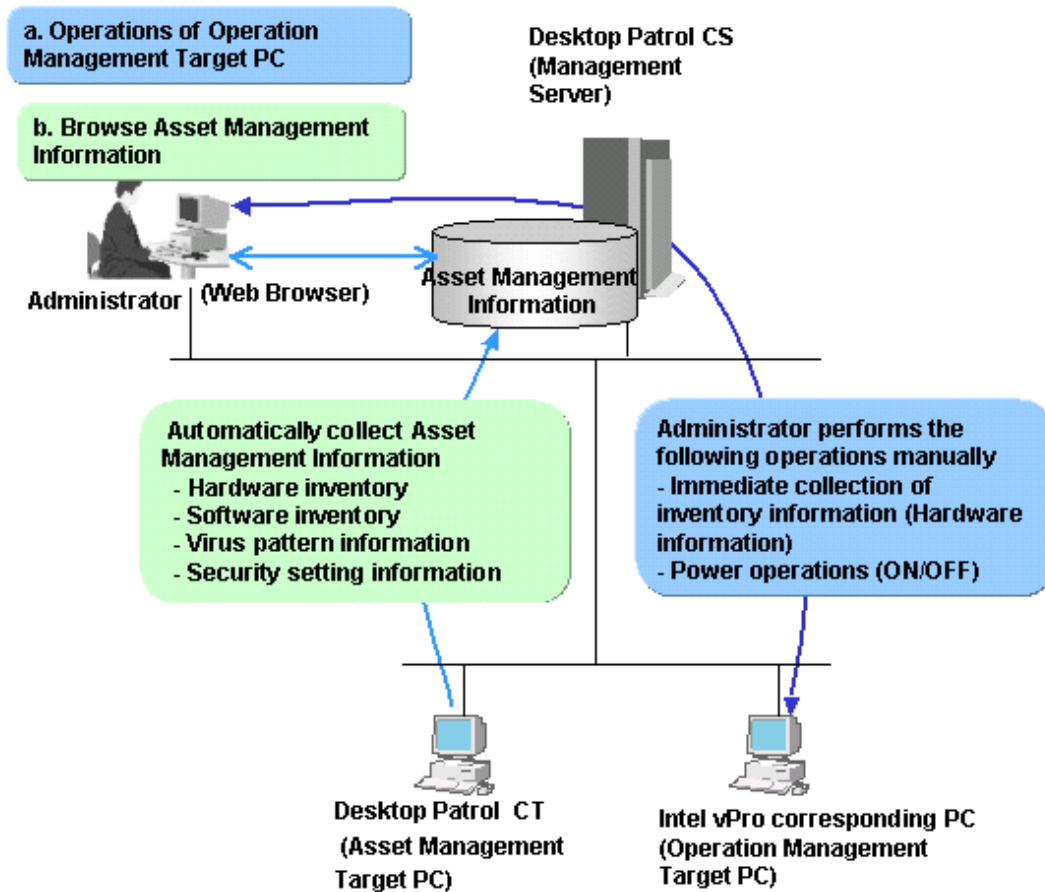
PC Operation Management is a function that can perform remote control on a PC even if its power is OFF, using Intel AMT (Active Management Technology), which is one of the technologies contained in Intel vPro and Intel Centrino Pro.

PC Operation Management has the following functions.

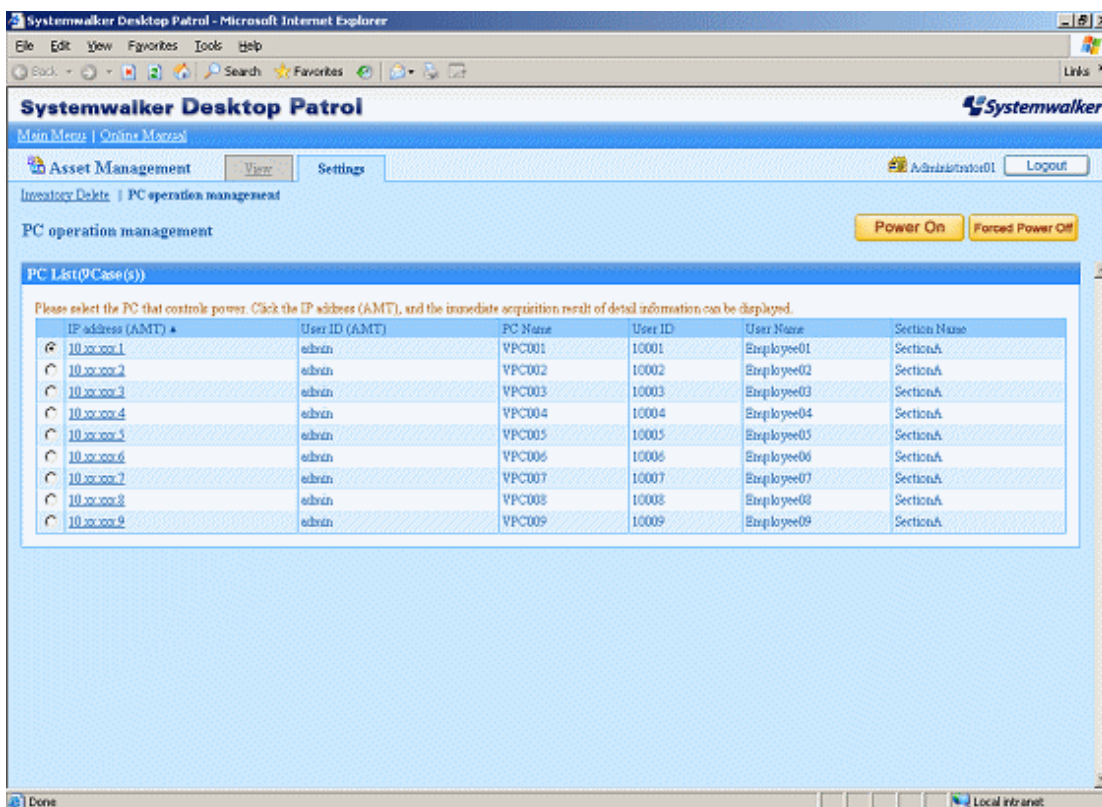
- Real-time collection of Inventory information (hardware information) (Notes)
- Power operations (ON, OFF)

Notes) Since the inventory information that Can be collected by this function is the information collected using Intel AMT, the collected content is different from the information that can be viewed in **Asset Management > Inventory Information** of "Desktop Patrol Main Menu".

An overview of the PC Operation Management Function is shown below.



The PC Operation Management Function is operated through the following window of "Systemwalker Desktop Patrol Main Menu".



CT operation status log

When the Systemwalker Desktop Patrol CT with continuing status of not applying security patches exists in "Systemwalker Desktop Patrol Main Menu", the administrator must confirm the operation status of CT from users.

In order to relieve the burdens on the administrator, the operation status of CT can be managed in Systemwalker Desktop Patrol CS as a log. The administrator can confirm the following operation status of Systemwalker Desktop Patrol CT according to operation status logs.

- Operation records of Systemwalker Desktop Patrol
 - Start/Stop of Systemwalker Desktop Patrol services
 - Policy receiving
 - Inventory collection
 - Patches installation
 - Contents download
 - Updater application
- Operation records of Windows
 - Windows logon/logoff
 - Windows suspend status / suspend recovery
 - Using Battery / Using AC
 - LAN connection enabled / disabled

The administrator can confirm the operation status by analyzing the operation status log without confirming the status with CT users.

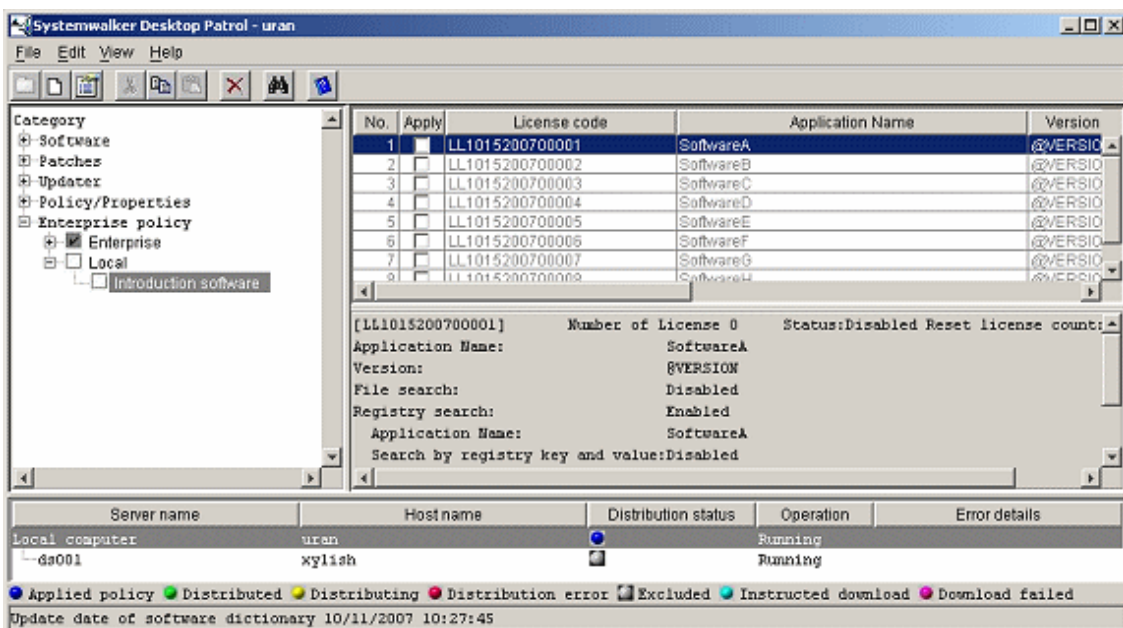
Function of user asset software dictionary creation

When the software products to be managed are not defined in "Enterprise" of the software dictionary, definition should be added in "Local" of the software dictionary.

User asset software dictionary creation is a function that simply defines "Local" of the software dictionary through the "Addition/Deletion Information of Programs" that is collected as Inventory information.

Since the software products installed in each PC can be easily considered as license management target, the IT asset can be used effectively and shortfall of the software license can be grasped.

An example of user asset software dictionary definition is shown below.



SMTP verification for sending emails

When sending emails using the "Warning Notification Function" or using the "Email Sending Function of Command Mode CT, SMTP verification is required.

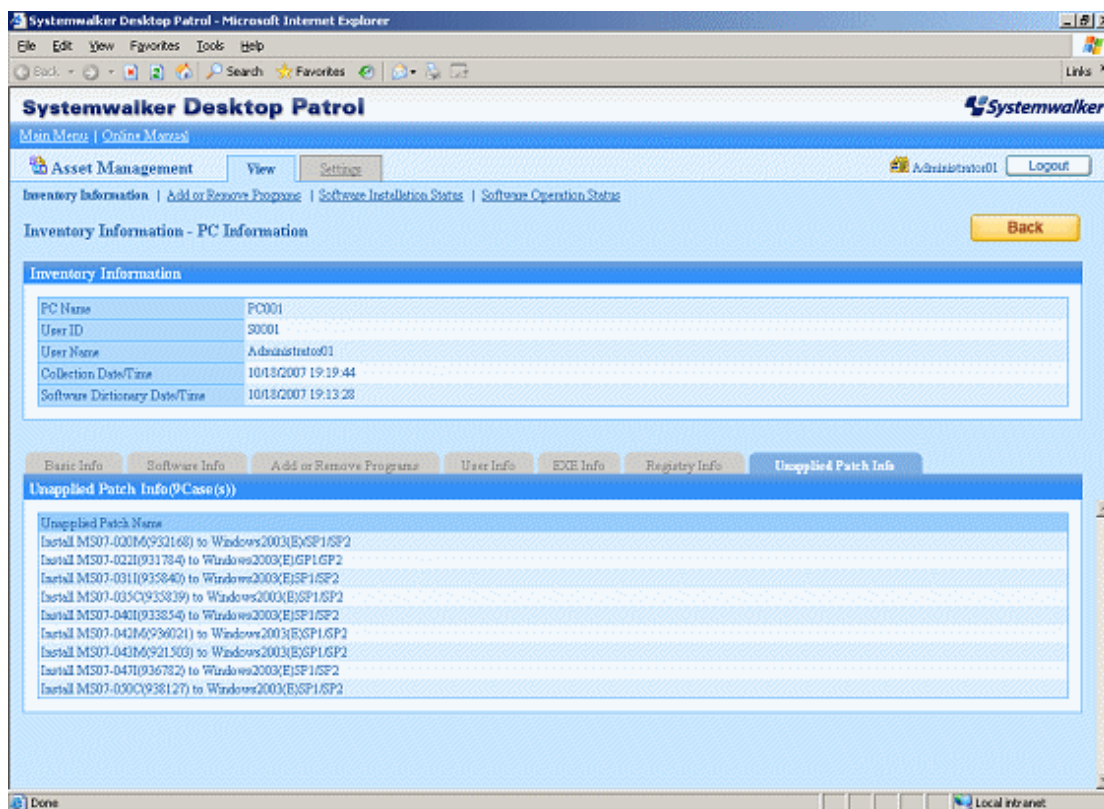
The following methods of verification can be selected.

- CRAM-MD5
- LOGIN verification
- PLAIN verification
- Automatic judgment

Viewing unapplied patches information

Unapplied Patches Information can be viewed in the "Asset Management" window of "Systemwalker Desktop Patrol Main Menu".

Information of patches that are considered as automatic installation targets, which are not applied on Systemwalker Desktop Patrol CT can be viewed.



The screenshot displays the Systemwalker Desktop Patrol web interface within a Microsoft Internet Explorer browser. The page title is "Systemwalker Desktop Patrol" and the URL is "http://localhost:8080/". The interface includes a navigation menu with "Asset Management" selected, and a "View" button. The main content area is titled "Inventory Information - PC Information" and contains a table with the following data:

Inventory Information	
PC Name	PC001
User ID	S0001
User Name	Administrator01
Collection Date/Time	10/18/2007 19:19:44
Software Dictionary Date/Time	10/18/2007 19:13:28

Below the table, there are several tabs: "Basic Info", "Software Info", "Add or Remove Programs", "User Info", "EXE Info", "Registry Info", and "Unapplied Patch Info". The "Unapplied Patch Info" tab is active, showing a list of unapplied patches:

```
Unapplied Patch Name
Instal MS07-020(M/932168) to Windows2003(EX/SP1/SP2
Instal MS07-022(I/931784) to Windows2003(EJ/SP1/SP2
Instal MS07-031(I/935840) to Windows2003(EJ/SP1/SP2
Instal MS07-033(C/933839) to Windows2003(EJ/SP1/SP2
Instal MS07-040(I/933854) to Windows2003(EJ/SP1/SP2
Instal MS07-042(M/934021) to Windows2003(EX/SP1/SP2
Instal MS07-042(M/921303) to Windows2003(EX/SP1/SP2
Instal MS07-047(I/936782) to Windows2003(EJ/SP1/SP2
Instal MS07-000(C/938127) to Windows2003(EJ/SP1/SP2
```

Chapter 2 List of Incompatible Items

This section describes the incompatible items when upgrading Systemwalker Desktop Patrol.

2.1 Upgrade from V13.2.0

The incompatible items when upgrading from Systemwalker Desktop Patrol V13.2.0 are as follows.

Besides, this item describes the incompatibility when upgrading from V13.2.0 to V14.2.0. When upgrading to this version, the following incompatible items should be confirmed after confirming this item.

- [2.2 Upgrade from V14.2.0](#)
- [2.3 Upgrade from V15.1.0](#)
- [2.4 Upgrade from V15.1.1](#)
- [2.5 Upgrade from V15.1.3](#)

2.1.1 Incompatible Operating Environment

This section describes the incompatible operating environment.

Supported OS

The following OS are not supported.

- Client (CT)
 - Microsoft Windows NT Server 4.0
 - Microsoft Windows NT Workstation 4.0
 - Microsoft Windows 98
 - Microsoft Windows Me

Web Browser

The following version is not supported.

- Microsoft Internet Explorer 5.5 (Service Pack 2)

CS required memory capacity

The memory capacity Systemwalker Desktop Patrol CS required is modified as follows:

V13.2.0	V14.2.0
Larger than 768MB (excluding capacity for OS)	Larger than 1024MB (excluding capacity for OS)

CS required disk capacity

The database capacity constructed in Systemwalker Desktop Patrol CS is modified as follows:

Number of PC	Collect EXE Information	Collect Metering Information	Database Capacity (V13.2.0)	Database Capacity (V14.2.0)
500	None	None	About 860MB	About 4.0GB
	None	Existing	About 1.2GB	About 4.8GB
	Existing	None	About 1.7GB	About 5.6GB
	Existing	Existing	About 2.0GB	About 6.4GB

Number of PC	Collect EXE Information	Collect Metering Information	Database Capacity (V13.2.0)	Database Capacity (V14.2.0)
1000	None	None	About 1.1GB	About 6.1GB
	None	Existing	About 1.7GB	About 7.7GB
	Existing	None	About 2.8GB	About 9.3GB
	Existing	Existing	About 3.4GB	About 10.8GB
3000	None	None	About 2.1GB	About 13.1GB
	None	Existing	About 3.9GB	About 17.2GB
	Existing	None	About 7.2GB	About 21.4GB
	Existing	Existing	About 9.0GB	About 25.5GB

2.1.2 Function Incompatibility

This section describes incompatibilities of functions.

Systemwalker Desktop Integrated Console

Systemwalker Desktop Integrated Console has been deleted since V14.2.0.

Main menu

Items displayed in the Software Auditing window

Items displayed in **Software Auditing > Security Patch** window of the main menu are modified as follows:

V13.2.0/V13.2.1 or Earlier	V14.2.0
<p>The following number of machines is displayed.</p> <ul style="list-style-type: none"> - Correspondent number of machines - Non correspondent number of machines 	<p>The following number of machines is displayed (not display the non correspondent number of machines)</p> <ul style="list-style-type: none"> - Correspondent Number

Items displayed in the PC Information > Security Information window

Items displayed in the **PC Information > Security Information** window of the main menu are modified as follows:

V13.2.0/V13.2.1 or Earlier	V14.2.0
Not correspondent	Cannot be collected

Items displayed in PC Information > Security Information > System Security Information

Items displayed in the **PC Information > Security Information > System Security Information** window of the main menu are modified as follows:

V13.2.0/V13.2.1 or Earlier		V14.2.0	
Category	Displayed items	Category	Displayed items
BIOS status	Startup password	Hardware	BIOS Startup password
	Setting password		BIOS Setup password
Login status	Automatic login	OS	Automatic Logon
	Use [Welcome]		Welcome Screen
	Display the final user ID		Last User Name

Items displayed in PC Information > Security Information > User Security Information

Items displayed in the **PC Information > Security Information > User Security Information** window of the main menu are modified as follows:

V13.2.0/V13.2.1 or Earlier		V14.2.0	
Category	Displayed items	Category	Displayed items
Screen Saver	Startup	OS	Screen Saver
	Remove the password		Screen Saver Password
IE security zone	Internet zone	Internet Explorer	Internet zone

Warning notification item in the Event Settings window

The warning notification item in the **Event Settings** window is modified as follows:

V13.2.0 or Earlier	V14.2.0
Unapplied security patches	Software Auditing

Besides, file name of warning notification is modified as follows:

V13.2.0 or Earlier	V14.2.0
Unapplied security patches information file (security_ng.csv)	Software auditing information file (software_install.csv)

Format of Inventory information file

The format of Inventory information file downloaded through the **Assets Management > Inventory Information** window of the main menu is modified as follows:

V13.2.0 or Earlier	V14.2.0
Download all Inventory items.	Download Inventory items same as the items displayed in the PC Information > Inventory Information window.

Besides, the following item name of Inventory information file will be modified. Add items to Column 59 and Column 60.

The previous Column 14 is the date for reflecting to Systemwalker standard database, but it has modified as the date for Inventory Collection.

Column No.	Item of V13.2.0 or Earlier	Item of V14.2.0
13	Software Dictionary Version	Software Dictionary Date / Time
14	Update Date/Time	Collection Date/Time
16	Computer Properties	PC Properties
29	Computer Vender Name	PC Manufacturer
30	Computer Model	PC Type
31	Computer Serial Number	PC Serial Number
32	Primary Cache Size	Primary Cache
33	Secondary Cache Size	Secondary Cache
34	Drive Information (Drive Name, Drive Type, Capacity, Free Capacity, Volume, File System Information)	Drive information (Drive name, Drive Type, Drive Capacity, Drive Free Capacity, Volume, File System Information)

Column No.	Item of V13.2.0 or Earlier	Item of V14.2.0
43	User Name	OS User Name
44	Company Name	OS OU Name
45	OS product ID	Product ID of OS
52	Display name	Display Item
59	- (Reserved zone)	Connection Target Server Name
60	- (Reserved zone)	Software Dictionary Icon

2.2 Upgrade from V14.2.0

This section lists the items that become incompatible after upgrade from Systemwalker Desktop Patrol V14.2.0.

- [2.3 Upgrade from V15.1.0](#)
- [2.4 Upgrade from V15.1.1](#)
- [2.5 Upgrade from V15.1.3](#)

2.2.1 Incompatible Operating Environment

This section explains the incompatibilities in the operating environment.

Supported OS

The following OSs (service packs) are no longer supported:

- Corporate Server (CS)
 - Microsoft Windows Server 2003, Standard Edition
 - Microsoft Windows Server 2003, Enterprise Edition
 - Microsoft Windows Server 2003, Standard x64 Edition
 - Microsoft Windows Server 2003, Enterprise x64 Edition
 - Microsoft Windows Server 2003 R2, Standard Edition
 - Microsoft Windows Server 2003 R2, Enterprise Edition
 - Microsoft Windows Server 2003 R2, Standard x64 Edition
 - Microsoft Windows Server 2003 R2, Enterprise x64 Edition
 - Microsoft Windows Server 2008 Foundation Original Release
 - Microsoft Windows Server 2008 Standard Original Release
 - Microsoft Windows Server 2008 Enterprise Original Release
 - Microsoft Windows Server 2008 Standard without Hyper-V(TM) Original Release
 - Microsoft Windows Server 2008 Enterprise without Hyper-V(TM) Original Release
- Domain Server (DS)
 - Microsoft Windows Server 2003, Standard Edition
 - Microsoft Windows Server 2003, Enterprise Edition
 - Microsoft Windows Server 2003, Standard x64 Edition
 - Microsoft Windows Server 2003, Enterprise x64 Edition
 - Microsoft Windows Server 2003 R2, Standard Edition

- Microsoft Windows Server 2003 R2, Enterprise Edition
- Microsoft Windows Server 2003 R2, Standard x64 Edition
- Microsoft Windows Server 2003 R2, Enterprise x64 Edition
- Microsoft Windows Server 2008 Foundation Original Release
- Microsoft Windows Server 2008 Standard Original Release
- Microsoft Windows Server 2008 Enterprise Original Release
- Microsoft Windows Server 2008 Standard without Hyper-V(TM) Original Release
- Microsoft Windows Server 2008 Enterprise without Hyper-V(TM) Original Release
- Client Terminal (CT)
 - Microsoft Windows Server 2003, Standard Edition
 - Microsoft Windows Server 2003, Enterprise Edition
 - Microsoft Windows Server 2003, Standard x64 Edition
 - Microsoft Windows Server 2003, Enterprise x64 Edition
 - Microsoft Windows Server 2003 R2, Standard Edition
 - Microsoft Windows Server 2003 R2, Enterprise Edition
 - Microsoft Windows Server 2003 R2, Standard x64 Edition
 - Microsoft Windows Server 2003 R2, Enterprise x64 Edition
 - Microsoft Windows Server 2008 Foundation Original Release
 - Microsoft Windows Server 2008 Standard Original Release
 - Microsoft Windows Server 2008 Enterprise Original Release
 - Microsoft Windows Server 2008 Standard without Hyper-V(TM) Original Release
 - Microsoft Windows Server 2008 Enterprise without Hyper-V(TM) Original Release
 - Microsoft Windows XP Professional Service Pack 3
 - Microsoft Windows XP Home Edition Service Pack 3
 - Microsoft Windows XP Professional Original Release, and Service Pack 1/1a/2
 - Microsoft Windows XP Home Edition Original Release, and Service Pack 1/1a/2
 - Microsoft Windows Vista Ultimate Original Release, and Service Pack 1
 - Microsoft Windows Vista Enterprise Original Release, and Service Pack 1
 - Microsoft Windows Vista Business Original Release, and Service Pack 1
 - Microsoft Windows Vista Home Premium Original Release, and Service Pack 1
 - Microsoft Windows Vista Home Basic Original Release, and Service Pack 1
 - Microsoft Windows Vista Ultimate 64-bit Version Original Release, and Service Pack 1
 - Microsoft Windows Vista Enterprise 64-bit Version Original Release, and Service Pack 1
 - Microsoft Windows Vista Business 64-bit Version Original Release, and Service Pack 1
 - Microsoft Windows Vista Home Premium 64-bit Version Original Release, and Service Pack 1
 - Microsoft Windows Vista Home Basic 64-bit Version Original Release, and Service Pack 1
- AC
 - Microsoft Windows XP Professional Service Pack 3

- Microsoft Windows XP Home Edition Service Pack 3
- Microsoft Windows XP Professional Original Release, and Service Pack 1/1a/2
- Microsoft Windows XP Home Edition Original Release, and Service Pack 1/1a/2
- Microsoft Windows Vista Ultimate Original Release, and Service Pack 1
- Microsoft Windows Vista Enterprise Original Release, and Service Pack 1
- Microsoft Windows Vista Business Original Release, and Service Pack 1
- Microsoft Windows Vista Home Premium Original Release, and Service Pack 1
- Microsoft Windows Vista Home Basic Original Release, and Service Pack 1
- Microsoft Windows Vista Ultimate 64-bit Version Original Release, and Service Pack 1
- Microsoft Windows Vista Enterprise 64-bit Version Original Release, and Service Pack 1
- Microsoft Windows Vista Business 64-bit Version Original Release, and Service Pack 1
- Microsoft Windows Vista Home Premium 64-bit Version Original Release, and Service Pack 1
- Microsoft Windows Vista Home Basic 64-bit Version Original Release, and Service Pack 1
- ADT
 - Microsoft Windows Server 2003, Standard Edition
 - Microsoft Windows Server 2003, Enterprise Edition
 - Microsoft Windows Server 2003, Standard x64 Edition
 - Microsoft Windows Server 2003, Enterprise x64 Edition
 - Microsoft Windows Server 2003 R2, Standard Edition
 - Microsoft Windows Server 2003 R2, Enterprise Edition
 - Microsoft Windows Server 2003 R2, Standard x64 Edition
 - Microsoft Windows Server 2003 R2, Enterprise x64 Edition
 - Microsoft Windows Server 2008 Foundation Original Release
 - Microsoft Windows Server 2008 Standard Original Release
 - Microsoft Windows Server 2008 Enterprise Original Release
 - Microsoft Windows Server 2008 Standard without Hyper-V(TM) Original Release
 - Microsoft Windows Server 2008 Enterprise without Hyper-V(TM) Original Release
 - Microsoft Windows XP Professional Service Pack 3
 - Microsoft Windows XP Home Edition Service Pack 3
 - Microsoft Windows XP Professional Original Release, and Service Pack 1/1a/2
 - Microsoft Windows XP Home Edition Original Release, and Service Pack 1/1a/2
 - Microsoft Windows Vista Ultimate Original Release, and Service Pack 1
 - Microsoft Windows Vista Enterprise Original Release, and Service Pack 1
 - Microsoft Windows Vista Business Original Release, and Service Pack 1
 - Microsoft Windows Vista Home Premium Original Release, and Service Pack 1
 - Microsoft Windows Vista Home Basic Original Release, and Service Pack 1
 - Microsoft Windows Vista Ultimate 64-bit Version Original Release, and Service Pack 1
 - Microsoft Windows Vista Enterprise 64-bit Version Original Release, and Service Pack 1

- Microsoft Windows Vista Business 64-bit Version Original Release, and Service Pack 1
- Microsoft Windows Vista Home Premium 64-bit Version Original Release, and Service Pack 1
- Microsoft Windows Vista Home Basic 64-bit Version Original Release, and Service Pack 1

Hardware environment

For CS/DS/CT/SS, the hardware environment required for using Systemwalker Desktop Patrol has been changed.
Refer to "Required Hardware" in the *User's Guide* for details on hardware environment.

Prerequisite products

Product version of Symfoware is no longer required.
(Symfoware functions are included in Desktop Patrol.)

2.2.2 Function Incompatibility

This section describes incompatibilities of functions.

Status window and security auditing report

In auditing result display for a **PCs violating security policy**, the auditing result will indicate **OK** if firewall has been set twice or more.

Main menu

The main menu has been changed as follows:

Refer to "[Appendix A Term Table](#)" for details on the main menu terms.

Category	V14.2.0 or Earlier	V15.1.0
Detail of Device window > Details of Contract tab	Original Contract No. or Mainte Code with underline link	(Detail of Contract) is added to Original Contract No. or Mainte Code without underline link. By selecting (Detail of Contract) , contract information details are displayed.

Systemwalker Desktop Patrol AC

Report output function

"Best" and "worst" used as output information type have been changed to "high achievement rates" and "low achievement rates".

Updater

If you register the DS updater for version upgrade, the upgrade will also be applied to the CT on the DS.

If you register the CT updater for version upgrade, however, the upgrade will not be applied to the CT on the DS.

Displaying a Windows server/client

For the following case, the **Start** menu (**Apps** screen) structure registered during Systemwalker Desktop Patrol installation has been changed, with the layered display of the submenu removed, and directory names in the submenu omitted to make way for a new display style where menus are placed next to each other.

- If upgraded from Windows Server 2008 or Windows 7 or earlier to Windows Server 2012 or Windows 8

Note that the icon images and names for invocation displayed in each menu have not been changed.



Customization of the Apps screen for Windows Server 2012 and Windows 8

- Grouping can be done by dragging and dropping the icons in the **Apps** screen.
- The **Apps** screen size can be decreased by rotating the wheel backwards while pressing Ctrl on the **Apps** screen. Once the **Apps** screen size has been decreased, group names can be renamed by selecting the icon group.

To check which product the **Apps** screen shortcut is for, right-click the shortcut and then select **Open file location** from the menu at the bottom of the screen. This will open the file location in **Windows Explorer**, where the product name can be checked.

Event settings

The **Event Settings** window has been changed as follows:

Category	V14.2.0 or Earlier	V15.1.0
Alarm notification	-	The order of the check boxes has been changed.
	Add or Remove Software	Add Or Remove Product

File

The file names have been changed as follows:

Category	V14.2.0 or Earlier	V15.1.0
File	Add or remove programs information file	Product information file
	Software addition or deletion change information file	Product information addition and deletion change information file

Source name of the event log

In environments where CS has been installed, the source name of the event log output from the database has been changed as follows:

Category	V14.2.0 or earlier	V15.1.0
Source name of the event log	SymfoWARE RDB	AssetMgr RDB

Connecting from a CT in V14.2.0 or earlier

Connection from a CT in V14.2.0 or earlier will no longer be possible. To authorize connection, the CustomPolicy command must be used to configure the settings. Refer to the *Reference Manual* for details on CustomPolicy.exe (policy for modifying custom setup).

Operations during the execution of PC Information > Inventory Collection on the main menu

In V14.2.0 or earlier, when a CT is selected for **PC Information** on the main menu, and **Inventory Collection** is executed, collection was performed in accordance with the inventory collection behavior (default was difference collection) of the CT. In V15.1.0, however, all inventory information is collected before notifying the server.

Security diagnosis result window

If you upgrade the version of a CT of Windows 7 (original release) or Windows Server 2008 R2 (original release), the **Diagnosis result window of operation settings** will indicate a failure. Also, the PC will be deemed as one with a security problem, and aggregated as such on the main menu.

To prevent CTs that use these operating systems from treating this scenario as a failure, change the support status of the operating system in the security policy to **Not Auditing** before the version upgrade.

Omission in the EXE information file path

In EXE information collection, collected file paths exceeding 127 fullwidth characters or 380 halfwidth characters will be displayed truncated. As of V15.1.0, however, the file path will be collected and displayed with some middle section of it omitted.

Change in current license information file format

The following items have been added between the 7th and 8th columns of the current license information file (refer to "Current License Information File" in the *Reference Manual* for details).

No	Item
8	Supplier
9	Purchasing department
10	Purchaser
11	License type
12	License type (remarks)
13	License form
14	License form (remarks)
15	License agreement
16	License agreement (remarks)
17	License certificate
18	Certificate number
19	Management department
20	Storage location
21	Previous license management number
22	Other conditions
23	Scheduled update date

The security patch group name and security patch name for the software dictionary group

Security patch for the software dictionary group in **Distribution > Security Patches Distribution** and **Environment Setup > Software Auditing** in the main menu, security patch group names and names for Windows XP or earlier have been changed. The security patches that depend on Japanese, English, or Chinese (Simplified Chinese) will display the depended language in their names and group names.

Procedures for version upgrade

The procedure for version upgrade in environments in which V13.2.0 or earlier is used will change.

For V13.2.0 or earlier, registration of the CT updater for upgrade in the following directory will be added.

```
<DVD-ROM>\utilites\tool\upd v132
```

Refer to "Procedures for Version Upgrade by Applying Updater" in the *Installation Guide* for details.

About language display

When Systemwalker Desktop Patrol is upgraded in V15.1.0 from V13.2.0 or V14.2.0, Chinese display is changed to English display.

2.3 Upgrade from V15.1.0

There are no incompatible items when upgrading from Systemwalker Desktop Patrol V15.1.0.

There may however be incompatibilities between V15.1.0 and V15.1.1. When upgrading to this version, check the items in this section before checking the incompatible items in the following section:

- [2.4 Upgrade from V15.1.1](#)
- [2.5 Upgrade from V15.1.3](#)

2.4 Upgrade from V15.1.1

This section lists the items that become incompatible after upgrade from Systemwalker Desktop Patrol V15.1.1.

There may however be incompatibilities between V15.1.1 and V15.1.3. When upgrading to this version, check the items in this section before checking the incompatible items in the following section:

- [2.5 Upgrade from V15.1.3](#)

2.4.1 Function Incompatibility

Terms have been modified as follows:

Terms that were changed in V15.1.3 or later

Terms that were changed in V15.1.3 or later are as follows:

Term in V15.1.1 or earlier	Term in V15.1.3 or later
Systemwalker Desktop Patrol SS (Smartdevice Server)	Systemwalker Desktop Patrol SS (Smartdevice and Secure server)

2.5 Upgrade from V15.1.3

2.5.1 Incompatibilities in the Operating Environment

This section explains the incompatibilities in the operating environment.

Operating system not supported

The following operating systems are no longer supported:

- CS
 - Microsoft Windows Server 2003
 - Microsoft Windows Server 2003 R2
- DS
 - Microsoft Windows Server 2003
 - Microsoft Windows Server 2003 R2
- CT
 - Microsoft Windows Server 2003
 - Microsoft Windows Server 2003 R2
 - Microsoft Windows Vista
 - Windows 8
- AC
 - Microsoft Windows Vista
 - Windows 8
- ADT
 - Microsoft Windows Server 2003
 - Microsoft Windows Server 2003 R2
 - Microsoft Windows Vista

- Windows 8
- SS
 - Microsoft Windows Server 2003
 - Microsoft Windows Server 2003 R2
- Smart device CT
 - Android 3.0 - 4.3
 - iOS 5.0 - 5.1.1

Software

The following software is no longer supported:

- CS
 - Internet Information Services 6.0
- AC
 - Office Standard Edition 2003
 - Office Professional Edition 2003
 - Office Ultimate 2007
 - Office Enterprise 2007
 - Office Standard 2007
 - Office Professional 2007
 - Office Professional Plus 2007
 - Office Personal 2007
 - Office Excel 2003
 - Office Excel 2007
 - Office Visio Standard 2003
 - Office Visio Professional 2003
 - Office Visio Standard 2007
 - Office Visio Professional 2007
- Browsers
 - Windows Internet Explorer 7
 - Windows Internet Explorer 8

Virtual operating systems

The following virtual operating systems are no longer supported:

- CS
 - VMware vSphere 4
- DS
 - VMware vSphere 4
- CT
 - VMware vSphere 4

- Citrix XenDesktop 4.0
- AC
 - VMware vSphere 4
 - Citrix XenDesktop 4.0
- ADT
 - VMware vSphere 4
 - Citrix XenDesktop 4.0

CS required memory capacity

The memory capacity required by Systemwalker Desktop Patrol CS has been changed as follows:

V15.1.3	V15.2.0
2 GB or greater (excluding usage amount of OS)	2.5 GB or greater (excluding usage amount of OS)

Required memory capacity of DS

The memory capacity required by Systemwalker Desktop Patrol DS has been changed as follows:

V15.1.3	V15.2.0
720 MB or greater (excluding usage amount of OS)	850 MB or greater (excluding usage amount of OS)

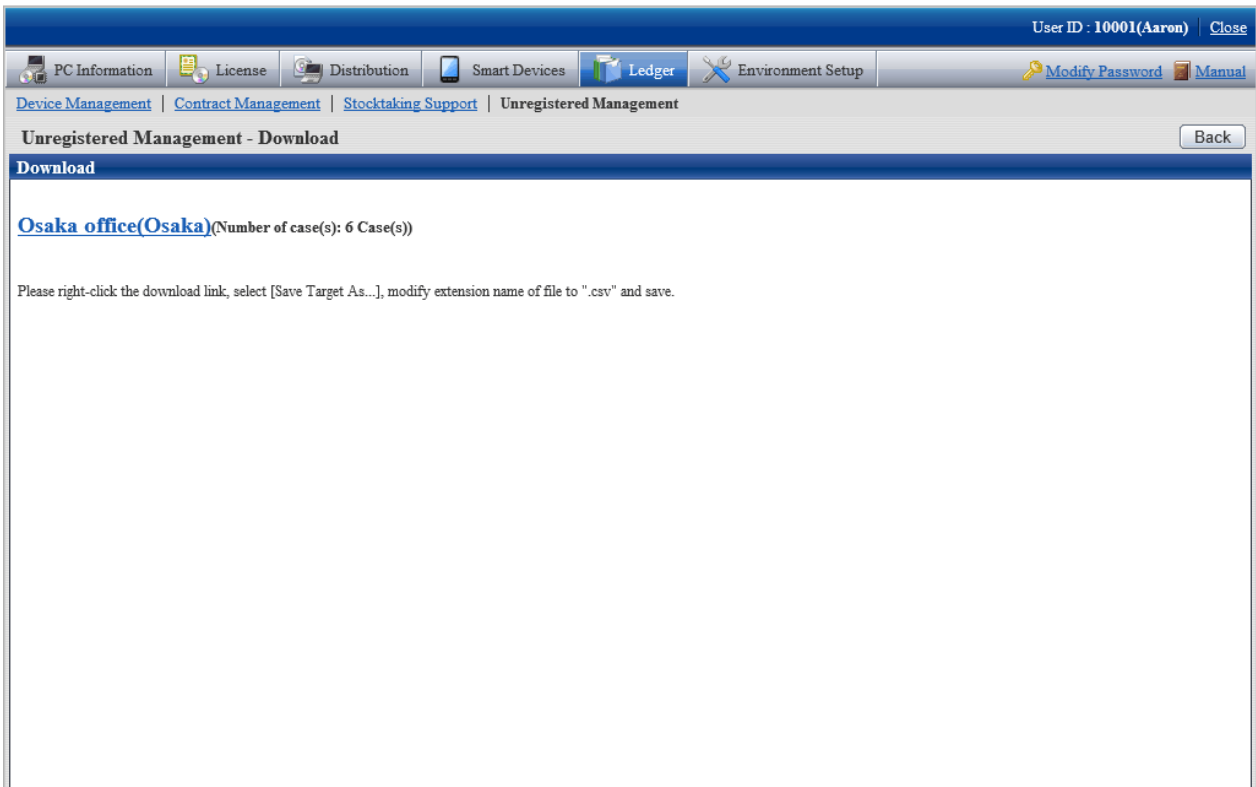
2.5.2 Function Incompatibility

This section describes incompatibilities of functions.

Unregistered Device Management download window

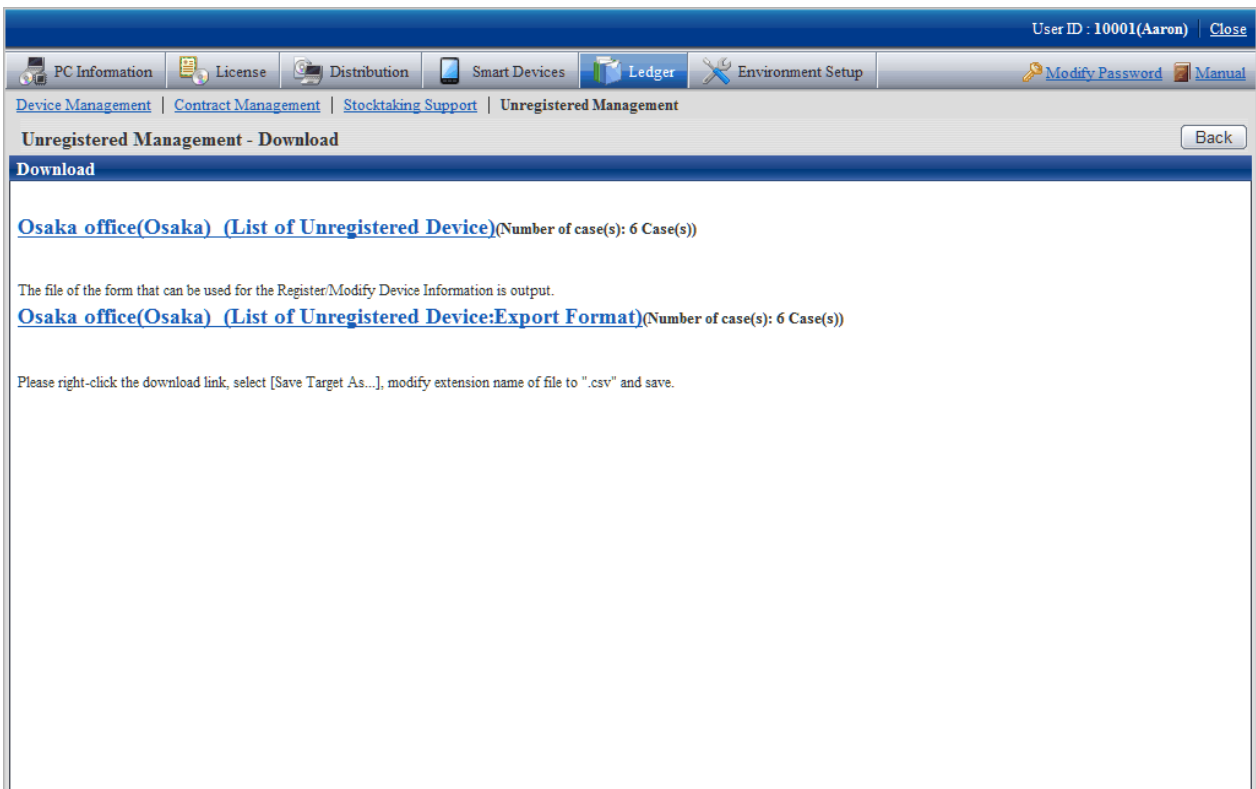
Both CSV files and EXPORT files can be output in V15.2.0.

Unregistered Device Management download window in V15.1.3 or earlier versions



When the download link is clicked, only EXPORT files were output.

Unregistered Device Management download window in V15.2.0



Both CSV files and EXPORT files can now be output even in the **Unregistered Device Management** download window, as follows, using the same output format as the **Device Management** and **Contract Management** download windows. This allows you to save files in the format that suits your purpose.

- CSV file (*.csv)
Saved as CSV file.
- EXPORT file (*.csv)
Saved in the format registered in the Collective Registration/Modification for Asset Information feature.

Display of Stocktaking Date has been added for automatic stocktaking

In V15.2.0, the **Stocktaking Date** can now be displayed for automatic stocktaking.

The date and time of the first time that manual stocktaking was performed during the stocktaking period or the date and time of the first time that automatic stocktaking was performed during the stocktaking period is displayed.

The screenshot shows the 'Stocktaking Support - List' window. At the top, there are navigation tabs: PC Information, License, Distribution, Smart Devices, Ledger, and Environment Setup. Below these are links for Device Management, Contract Management, Stocktaking Support, and Unregistered Management. The main content area is titled 'List of Stocktaking' and includes a 'Stocktaking Start Date: 01/25/2018' and a note: 'Detail of device will be displayed when device name and Asset Number are selected.' There are also pagination controls showing 'All 2 Case(s)', '<< < 1/1Page > >>', a 'Page' field with 'Move', and '20 items displayed'. The table below has the following data:

Device Name	Section	User Name	Asset Number	Stocktaking Status	Collection Date/Time	Stocktaking Date	Setup Place	Class	Type	Avail
cl100000	BusinessDepartment	Emma	A-000000002	o	01/27/2018 17:16:39	01/28/2018 21:02:21	Other office	PC	Client	In use
sv201	BusinessDepartment	Aaron	A-000000001	o	01/28/2018 17:51:46	01/28/2018 18:00:08	Other office	PC	Other	

Reflection to the stocktaking date for automatic stocktaking changes depending on the setting value of **Method to determine stocktaking status** in the **Config** window.

- Method to determine stocktaking status

- Use Stocktaking Date to determine stocktaking status

Even if autosync is performed, it will not be reflected to the stocktaking date. This is set only if stocktaking is performed manually.

- Use Stocktaking Date and Collection Date/Time to determine stocktaking status

If autosync is performed, and the condition (*1) is satisfied, the autosync execution date and time will be reflected to the stocktaking date.

*1: The collection date and time is on or after the stocktaking start date, and the stocktaking date is blank, or the stocktaking date is earlier than the stocktaking start date

- Use Stocktaking Date, Collection Date/Time and Detection Date/Time to determine stocktaking status

If autosync is performed, and the condition (*2) is satisfied, the autosync execution date and time will be reflected to the stocktaking date.

*2: The collection date and time or detection date and time is after the stocktaking start date, and the stocktaking date is blank, or the stocktaking date is earlier than the stocktaking start date

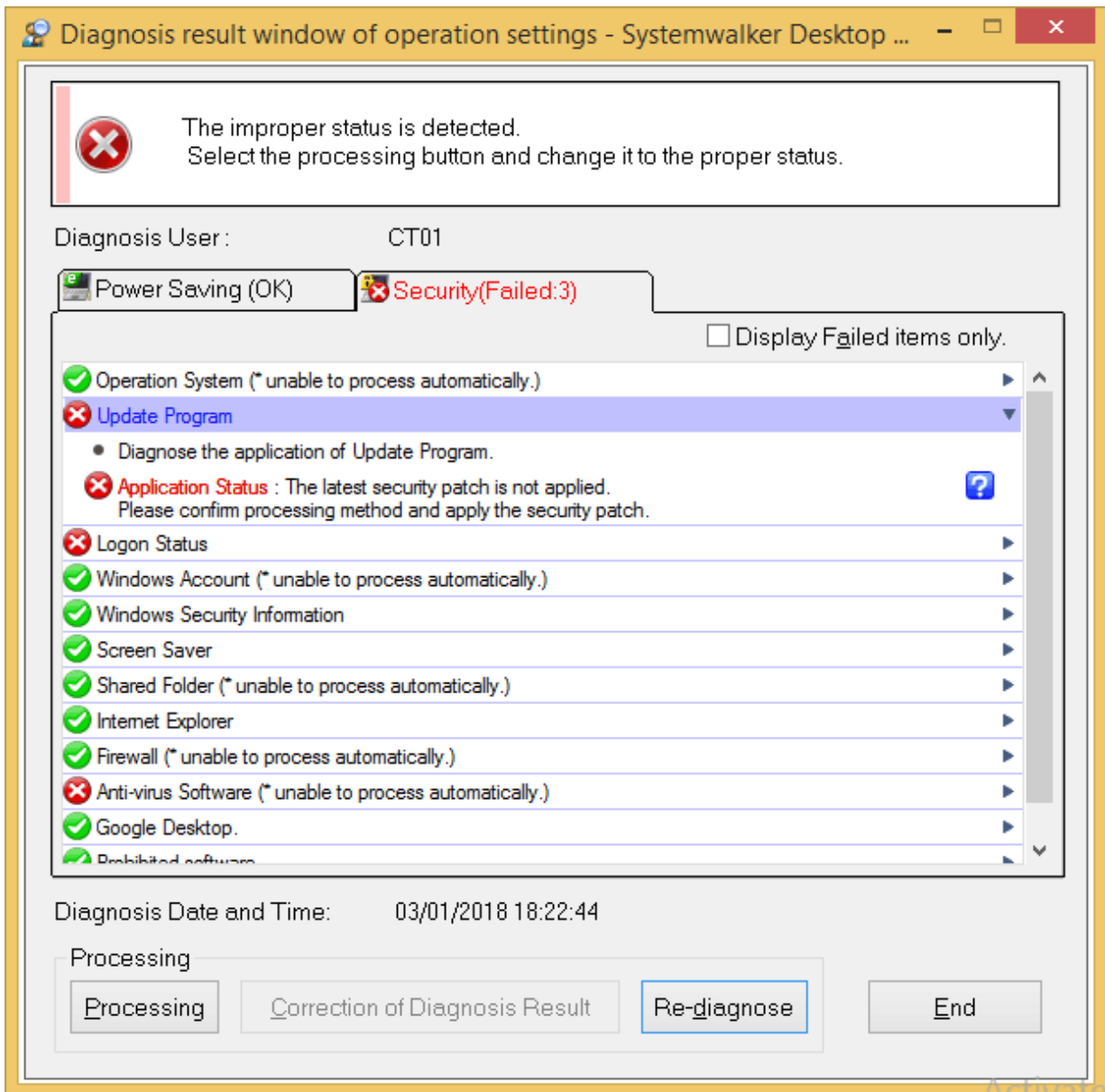
P Point

Customers who performed stocktaking manually do not need to change the operation method by selecting **Use Stocktaking Date to determine stocktaking status**.

Diagnosis result window of operation settings

In V15.2.0, item names displayed in the **Security** tab have been changed.

Diagnosis result window of operation settings in V15.2.0



The item name "Windows Update Program" has been changed to "Update Program"

.

The item name change only applies to the **Diagnosis result window of operation settings** window. The items displayed in the main menu and AC have not been changed.

Chapter 3 Migration to This Product

This chapter explains migration performed when upgrading Systemwalker Desktop Patrol.

Migration between 32-bit and 64-bit products

Version before migration	Version after migration	
	64-bit products	32-bit products
64-bit products	Y	N
32-bit products	N	Y

Y: Can be migrated

N: Cannot be migrated

Migration from previous versions

Version before migration		Version after migration
		V15.2.0
Systemwalker Desktop Patrol	V15.1.3	Y (*1)
	V15.1.1	Y (*1)
	V15.1.0	Y (*1)
	V14.2.0	Y (*1)
Systemwalker Desktop Patrol Standard Edition	V13.2.0	Y (*1)
Systemwalker Desktop Patrol Base Edition	V13.2.0	Y (*1)

Y: Can be migrated

*1: Refer to "Upgrading" in the *Installation Guide* for details on the migration procedure. The operating systems supported by each version may be different. Refer to "Operating System" in the *User's Guide* to check if an operating system supported in the version before migration is also supported in the version after migration.

Appendix A Term Table

Terms that were changed since V13.0.0

Terms that were changed since V13.0.0 are as follows:

Terms in V11.0L10	Terms in V13.0.0 or later	Note
Web Tools	Desktop Patrol Main Menu Desktop Patrol Download Menu	
Name of Application	Name of Program	
Add or Remove Applications	Add or Remove Programs	
Error PC	PC without configuration	
Enterprise Policy	Software Dictionary	
System Administrators Privilege Administrators Privilege	System account or Section management account	When all operations of Systemwalker Desktop Patrol are performed, system account is used. When the operations of section and affiliated section are performed, section management account is used.
Client Privilege	User account	
Employee	User	
Employee ID	User ID	
Employee master Employee password master E-mail Information master Affiliated master	User Management Information	
Building master	Building Management Information	
Division	Section	
Master	Master Management Information	
Machine	PC	
Metering Information	Software Operation Status	

Terms that were changed since V13.2.0

Terms that were changed since V13.2.0 are as follows:

Terms in V13.0.0 or earlier	Terms in V13.2.0	Note
Manage License	License Definition	
License Purchase	Current License Management	

Terms that were changed in V14.2.0

Terms that were changed in V14.2.0 are as follows:

Terms in V13.2.0 or earlier	Terms in V14.2.0	Note
Assets Management	PC Information	
Security Management	-	
Setup Management	Environment Setup	
Security Management	PC Information - Security Information	
Installation of Software	Software Audit	
Installation of Anti-Virus Software	Software Audit	
Application of Security Patch	Software Audit	
Setup Management - DS Download	Environment Setup- CS/DS Settings and Operation Status	
Setup Management - Policy Group Management/Client Policy	Setting Working Group of CT	
MC - Enterprise Policy	Environment Setup - Software Auditing	
MC - Software/Patch	Software Distribution	
MC - Server Policy/Property	Environment Setup - CS/DS Settings/ Option	
Enterprise Policy	Software Dictionary	
Enterprise	Support Center Definition	
Local	User Definition	
Anti-Virus Software	Anti-Virus Software	
LicenseSoftware	Software	
Automatic Patch Application	Security Patch	
Prohibition Application	Prohibition Software	
Creating Date of Software Dictionary	Creating Date by Support Center	
Updating Date of Software Dictionary	Date of Software Dictionary Update	
Application Name/Name	Name	
License Group	Software Group	
License Code	Software Code	
Version	Note	
License Relation Definition/ Judgment Formula	Combination Condition	
Distribution Status	Distribution Preparation Status	
Regular Name	CS/DS Name	
Contents	Software Distribution	
Server Name	CS/DS Name	
Contents Distribution	Software Distribution	
Use Prohibition Application	Prohibition Software	
Download	CSV Export	
Only Departmen/All Departments	Low-level Included	
Contents Download	Software Download	

Terms in V13.2.0 or earlier	Terms in V14.2.0	Note
PC Model Name	Model Name	
PC Manufacturer	Manufacturer Name	
PC Serial Number	Serial Number	

Terms that were changed since V15.1.0

Terms that were changed since V15.1.0 are as follows:

Terms in V14.2.0 or earlier	Terms in V15.1.0 or later	Note
Number of PC by section	Aggregate by section	Status window
Number of PC by item	Aggregate by item	Status window
Product Name - Desktop Patrol - Desktop Keeper	Function Name - Asset Management - Log Management	Text at the beginning of messages displayed in message boxes on the Status window
Add or Remove Programs	Product Information	PC Information window
Add or Remove Programs	Product Information	Tab in the PC Information window displayed from the list of PCs
Search for "Add or Remove Program"	Search for "Product Information"	Settings of Software Auditing > User Definition
License Management	License	main menu
Management Ledger	Ledger	main menu
User Management	Users	Environment Setup
Section Management	Sections	Environment Setup
Policy Group Management	Policy Groups	Environment Setup
Settings of Software Auditing	Software Auditing	Environment Setup
CS/DS Settings and Operation Status	CS/DS Settings and Status	Environment Setup
PC Not Collecting Inventory Information	PCs for which inventory information has not been collected	Status Window
PC Not Installing Security Patches	PCs on which security patches have not been installed	Status Window
PC Violating Security Policy	PCs violating security policy	Status Window
PC Violating Power Saving Policy	PCs violating power saving policy	Status Window

Terms that were changed in V15.1.3 or later

Terms that were changed in V15.1.3 or later are as follows:

Terms in V15.1.1 or earlier	Terms in V15.1.3 or later	Remarks
Systemwalker Desktop Patrol SS (Smartdevice Server)	Systemwalker Desktop Patrol SS (Smartdevice and Secure server)	

Appendix B Window Operation Table

The following tables describe incompatibility of window operations.

B.1 MC Window in Earlier Versions

In Systemwalker Desktop Patrol V15, MC Window is changed as follows:

Server policies

MC Window Earlier Versions			V15 main menu			
Function Category	Sub-category	Item	Function Category	Main Category	Sub-category	Item
Collect files	-	Collect file names	None	None		
Download messages	-	Download messages	Environment setup	Option	Set software download	Download messages

Server properties

MC Window Earlier Versions			V15 main menu			
Function Category	Sub-category	Item	Function Category	Main Category	Sub-category	Item
Server information	-	Routine name	Environment setup	CS/DS settings and working situation	CS settings DS settings	CS name DS name
		Host name	Environment setup	CS/DS settings and working situation	CS settings DS settings	Host name
		Upper host name	Environment setup	CS/DS settings and working situation	DS settings	Upper CS/DS
Server information - Details	Server information	Administrator ID	CustomPolicy command			
		Port number: Contents release	None			
		Port number: Inventory transmission	None			
	Upper Server information	Host name	None			
		Port number: Contents release	None			

MC Window Earlier Versions			V15 main menu			
Function Category	Sub-category	Item	Function Category	Main Category	Sub-category	Item
		Port number: Inventory transmission	None			
	Communication with lower server and client	Maximum number of concurrent connections	CustomPolicy command			
		Size of transmission buffer	CustomPolicy command			
	Communication with upper server	Retry: interval	CustomPolicy command			
		Retry: times	CustomPolicy command			
		Timeout time	CustomPolicy command			
		Transmission interval	CustomPolicy command			
	Proxy	Use proxy during the communication with upper server and patch public server	Environment setup	CS/DS settings and working situation	Settings for the communication with public servers/support center (settings for the communication with upper CS/DS)	Use proxy
		Proxy server name	Environment setup	CS/DS settings and working situation	Settings for the communication with public servers/support center (settings for the communication with upper CS/DS)	Proxy server name
		Port number	Environment setup	CS/DS settings and working situation	Settings for the communication with public servers/support center (settings for the communication with upper CS/DS)	Port number
		Proxy user name	Environment setup	CS/DS settings and working situation	Settings for the communication with public servers/support center (settings for the	User name

MC Window Earlier Versions			V15 main menu			
Function Category	Sub-category	Item	Function Category	Main Category	Sub-category	Item
					communication with upper CS/DS)	
		Proxy password	Environment setup	CS/DS settings and working situation	Settings for the communication with public servers/support center (settings for the communication with upper CS/DS)	User name
		Do not use the domain name of the proxy server	Environment setup	CS/DS settings and working situation	Settings for the communication with public servers/support center (settings for the communication with upper CS/DS)	Do not use the domain name of the proxy server
	Inventory transmission	Polling interval	CustomPolicy command			
		Directory for saving collected files	CustomPolicy command			
Patch setting	Select published server	Published server	CustomPolicy command			
	-	Automatically download patches from the public server as planned	Environment setup	Option	Set security patches	Automatically download security patches from the public site as planned
		Download statistics -Service Pack -Security	Environment setup	Option	Set security patches	Automatically download objects
	Task plan	-Time	Environment setup	Option	Set security patches	Task plan
		-Daily -Weekly	Environment setup	Option	Set security patches	Task plan
Patch setting-Details	Retry when automatic download fails	Retry times	CustomPolicy command			
		Retry interval	CustomPolicy command			
Contents release	-	Download interval	Environment setup	CS/DS settings and working situation	Settings for the communication with public servers/support center (settings for the	Interval for the communication with the support center

MC Window Earlier Versions			V15 main menu			
Function Category	Sub-category	Item	Function Category	Main Category	Sub-category	Item
					communication with upper CS/DS)	Interval for the communication with upper CS/DS
		Start time for download	Environment setup	CS/DS settings and working situation	Settings for the communication with public servers/support center (settings for the communication with upper CS/DS)	Time segment for communication with the support center Time segment for receiving distribution software
		End time for download	Environment setup	CS/DS settings and working situation	Settings for the communication with public servers/support center (settings for the communication with upper CS/DS)	Time segment for communication with the support center Time segment for receiving distribution software
		Policy/attribute release in a non-download period	CustomPolicy command			
Contents release - Details	-	Software list update time	CustomPolicy command			
		Contents saving directory	Installation time			
		Maximum size of the Contents saving directory	CustomPolicy command			
		Extended Contents saving directory	CustomPolicy command			
		Maximum size of the extended Contents saving directory	CustomPolicy command			

Client policies

MC Window Earlier Versions			V15 main menu			
Function Category	Sub-category	Item	Function Category	Main Category	Sub-category	Item
Collection condition	-	Collect files	Environment setup	Policy Groups - Basic running policy -	Set collection items	Collect files

MC Window Earlier Versions			V15 main menu			
Function Category	Sub-category	Item	Function Category	Main Category	Sub-category	Item
				Inventory information		
	-	Collect software running status	Environment setup	Policy Groups - Basic running policy - Inventory information	Set collection items	Collect software running status
	-	Collect EXE information	Environment setup	Policy Groups - Basic running policy - Inventory information	Set collection items	Collect EXE information
Collection condition - Details	-	Inventory difference collection	CustomPolicy command			
User information	-	Item	Environment setup	Option	User information	User information
Collect files	-	Collect file names	Environment setup	Policy Groups - Basic running policy - Inventory information	Set collection items	Collect files
Task plan	New confirmation setting	New confirmation interval	Environment setup	Policy Groups - Basic running policy - Common settings	New confirmation setting	Policy confirmation interval
	Confirmation chance during login	Maximum of n minutes delayed after login	Environment setup	Policy Groups - Basic running policy - Common settings	New confirmation setting	Confirmation chance during login
		Confirmation chance for the Contents from clients	CustomPolicy command			
		Confirmation chance for the security patches from clients	CustomPolicy command			
	Collection unit	-Weekly -Daily -Not collect		Environment setup	Policy Groups - Basic running policy - Inventory information	Set collection plans
Week in which Inventory is collected			Environment setup	Policy Groups - Basic running policy -	Set collection plans	Specify the day when Inventory is collected

MC Window Earlier Versions			V15 main menu			
Function Category	Sub-category	Item	Function Category	Main Category	Sub-category	Item
				Inventory information		
	Specify Inventory collection time	Specify collection time	Environment setup	Policy Groups - Basic running policy - Inventory information	Set collection plans	Specify the time segment when Inventory is collected
		Collection time	Environment setup	Policy Groups - Basic running policy - Inventory information	Set collection plans	Specify the time segment when Inventory is collected
	-	Consider CPU usage	Environment setup	Policy Groups - Basic running policy - Inventory information	Set collection plans	Inventory collection condition based on CPU usage
		Collect the Inventory information from CTs	CustomPolicy command			
Contents release	-	Automatic download server switchover	CustomPolicy command			
	New confirmation	Confirm new Contents during login	Environment setup	Policy Groups - Basic running policy - Software Distribution	Running setting during the login to the Windows	Automatically download object software
		Display notification dialog box	Environment setup	Policy Groups - Basic running policy - Software Distribution	Running setting during the login to the Windows	Automatically download object software
	Set rights	Use Admin rights during automatic download	Environment setup	Policy Groups - Basic running policy - Software Distribution	Set the right to automatically execute software after download	Specify the right of automatic execution after software download
		User name	Environment setup	Policy Groups - Basic running policy - Software Distribution	Set the right to automatically execute software after download	Specify the right of automatic execution after software download
		Password	Environment setup	Policy Groups - Basic running policy - Software Distribution	Set the right to automatically execute software after download	Specify the right of automatic execution after software download

MC Window Earlier Versions			V15 main menu			
Function Category	Sub-category	Item	Function Category	Main Category	Sub-category	Item
Proxy used for the communication with the upper server	-	Use the proxy for the communication with the upper server	Environment setup	CS/DS settings and working situation	Communication settings from the CT	User the proxy
	-	Proxy server name	Environment setup	CS/DS settings and working situation	Communication settings from the CT	Proxy server name
	-	Port number	Environment setup	CS/DS settings and working situation	Communication settings from the CT	Port number
	-	Proxy user name	Environment setup	CS/DS settings and working situation	Communication settings from the CT	User name
	-	Proxy password	Environment setup	CS/DS settings and working situation	Communication settings from the CT	Password
	-	Do not use the domain name of the proxy server	Environment setup	CS/DS settings and working situation	Communication settings from the CT	Do not use the domain name of the proxy server
Patch setting	Select the application function	Install security patches in CS/DS	Environment setup	Option	Set security patches	Install security patches in CS/DS
	Application retry setting	Application retry times	Environment setup	Policy Groups - Basic running policy - Patch Installation	Processing when patches fail to be applied	Retry times after application fails
	Patch Installation setting	Confirm and Patch new security patches during login	Environment setup	Policy Groups - Basic running policy - Patch Installation	Settings for automatic Patch Installation	Automatically Patch security patches
		Confirm and apply when powering on	Environment setup	Policy Groups - Basic running policy - Patch Installation	Settings for automatic Patch Installation	Automatically Patch security patches
		Patch security patches only when logging in to the Windows	Environment setup	Policy Groups - Basic running policy - Patch Installation	Settings for automatic Patch Installation	Automatically Patch security patches
		Specify the time segment for confirmation -Start/End	Environment setup	Policy Groups - Basic running policy - Patch Installation	Settings for automatic Patch Installation	Automatically install security patches
	Message setting - Before Patch Installation	Display messages	Environment setup	Policy Groups - Basic running policy - Patch Installation	Settings before Patch Installation	Display the message indicating that there is an

MC Window Earlier Versions			V15 main menu			
Function Category	Sub-category	Item	Function Category	Main Category	Sub-category	Item
						application security patch
		Messages before Patch Installation	Environment setup	Policy Groups - Basic running policy - Patch Installation	Settings before Patch Installation	Display the message indicating that there is an install security patch
		Display the Cancel button for application cancellation	Environment setup	Policy Groups - Basic running policy - Patch Installation	Settings before Patch Installation	Display the Cancel button for application cancellation
	Message setting - Before Patch Installation	Display messages	Environment setup	Policy Groups - Basic running policy - Patch Installation	Settings after Patch Installation	Display message after Patch Installation
		Messages after Patch Installation	Environment setup	Policy Groups - Basic running policy - Patch Installation	Settings after Patch Installation	Display message after Patch Installation
		Display the Cancel button for restart cancellation	Environment setup	Policy Groups - Basic running policy - Patch Installation	Settings after Patch Installation	Display the Cancel button for restart cancellation
		Automatically restart when countdown starts and there is no response	Environment setup	Policy Groups - Basic running policy - Patch Installation	Settings after Patch Installation	Automatically restart when countdown starts and there is no response
		Time (seconds)	Environment setup	Policy Groups - Basic running policy - Patch Installation	Settings after Patch Installation	Automatically restart when countdown starts and there is no response
		Automatically restart when no message is displayed after Patch Installation	Environment setup	Policy Groups - Basic running policy - Patch Installation	Security details settings	Automatically restart when no message is displayed after Patch Installation
	Message setting - Process for application failure	Display messages when the number of application retries exceeds the upper limit	Environment setup	Policy Groups - Basic running policy - Patch Installation	Processing when patches fail to be applied	Display error messages when the number of application retries exceeds the upper limit
		Display messages when the number of application	Environment setup	Policy Groups - Basic running policy - Patch Installation	Processing when patches fail to be applied	Display error messages when the number of application retries

MC Window Earlier Versions			V15 main menu			
Function Category	Sub-category	Item	Function Category	Main Category	Sub-category	Item
		retries exceeds the upper limit				exceeds the upper limit
CT environment setup	Obtain default values during installation	Obtain default values of environment setup during CT installation	Environment setup	Policy Groups - Basic running policy - Common settings	CT environment setup	Set initial values
		Obtain the default values of - User ID -PC name	Environment setup	Policy Groups - Basic running policy - Common settings	CT environment setup	Set initial values
		Obtain default values of specified items	Environment setup	Policy Groups - Basic running policy - Common settings	CT environment setup	Set initial values
		User ID	Environment setup	Policy Groups - Basic running policy - Common settings	CT environment setup	Set initial values User ID
		Digits of user ID	Environment setup	Policy Groups - Basic running policy - Common settings	CT environment setup	Set initial values Digit
		PC name	Environment setup	Policy Groups - Basic running policy - Common settings	CT environment setup	Set initial values PC name
		Digits of PC name	Environment setup	Policy Groups - Basic running policy - Common settings	CT environment setup	Set initial values Digit
		First character of the PC name	Environment setup	Policy Groups - Basic running policy - Common settings	CT environment setup	Set initial values Specify the first character of the PC name
		First character	Environment setup	Policy Groups - Basic running policy - Common settings	CT environment setup	Set initial values Specify the first character of the PC name

MC Window Earlier Versions			V15 main menu			
Function Category	Sub-category	Item	Function Category	Main Category	Sub-category	Item
		Obtain default values through specified files	CustomPolicy command			
		File name	None			
	Change restriction for environment setup	Restrict environment setting changes	Environment setup	Policy Groups - Basic running policy - Common settings	CT environment setup	Change restriction
		Allow inputting passwords to change environment setup	Environment setup	Policy Groups - Basic running policy - Common settings	CT environment setup	Change restriction Allow inputting passwords to change environment setup
		Password	Environment setup	Policy Groups - Basic running policy - Common settings	CT environment setup	Change restriction Allow inputting passwords to change environment setup
		Confirm input password	None			
		Restricted items -User ID -PC name	Environment setup	Policy Groups - Basic running policy - Common settings	CT environment setup	Change restriction
		Prompt that environment setting change is restrict during CT environment setup	CustomPolicy command			
		Prompt CT environment setup	Prompt CT environment setup	Environment setup	Policy Groups - Basic running policy - Common settings	CT environment setup
	Prompt message		Environment setup	Policy Groups - Basic running policy - Common settings	CT environment setup	The environment setting window is displayed only once during login.
	Update dates		Environment setup	Policy Groups - Basic running policy -	CT environment setup	The environment setting window is

MC Window Earlier Versions			V15 main menu			
Function Category	Sub-category	Item	Function Category	Main Category	Sub-category	Item
				Common settings		displayed only once during login. Display again.
	Display messages during environment setting	Display the message of CT environment setup	Environment setup	Policy Groups - Basic running policy - Common settings	CT environment setup	Display message
		Display messages	Environment setup	Policy Groups - Basic running policy - Common settings	CT environment setup	Display messages
Registry value collection	-	Collect item name	Environment setup	Environment setup - Policy Groups - Basic running policy - Inventory information	Registry information setting	Collect registry information
		Key name	Environment setup	Environment setup - Policy Groups - Basic running policy - Inventory information	Registry information setting	Collect registry information
		Value name	Environment setup	Environment setup - Policy Groups - Basic running policy - Inventory information	Registry information setting	Collect registry information
Stop applications	Copy application information	Copy application information	None			
	Application	File name	Environment setup	Policy Groups - Basic running policy - Common settings	Control execution files	Controlled execution files
		Actions when an application starts -Warning -Stopping	Environment setup	Policy Groups - Basic running policy - Common settings	Control execution files	Controlled execution files
		Check application installation	Environment setup	Set monitoring software	Add forbidden software	Add forbidden software
	Display messages	Warning message	Environment setup	Policy Groups - Basic running	Control execution files	Display warning message

MC Window Earlier Versions			V15 main menu			
Function Category	Sub-category	Item	Function Category	Main Category	Sub-category	Item
				policy - Common settings		
		Display forbidden enabled message	Environment setup	Policy Groups - Basic running policy - Common settings	Control execution files	Display the message when startup is forbidden
		Message	Environment setup	Policy Groups - Basic running policy - Common settings	Control execution files	Display the message when startup is forbidden
		Display check information	Environment setup	Policy Groups - Basic running policy - Common settings	Control execution files	Display the message during check
		Message	Environment setup	Policy Groups - Basic running policy - Common settings	Control execution files	Display the message during check

Contents registration window

MC Window Earlier Versions			V15 main menu			
Function Category	Sub-category	Item	Function Category	Main Category	Sub-category	Item
Software details	-	License code	None			
		Name	Software distribution	Set distribution software		Name
		Version	Software distribution	Set distribution software		Version
		Description	Software distribution	Set distribution software	Add distribution software	Description
	New software	File/folder position	Software distribution	Set distribution software	Add distribution software	File
		Downloaded execution file	Software distribution	Set distribution software	Add distribution software	Execution file

MC Window Earlier Versions			V15 main menu			
Function Category	Sub-category	Item	Function Category	Main Category	Sub-category	Item
		Object machine -Server -Client	None			
		Expiration date -Start -End	Software distribution	Set distribution software	Add distribution software	Expiration date
		Size of downloaded file	Software distribution	Set distribution software	Add distribution software	File
		Space for installation	Software distribution	Set distribution software	Add distribution software	Space for executing execution file (installation)
	Additional information	Automatically download from the CT	Software distribution	Set distribution software	Add distribution software	Download method on CT
		Time required for installation	Software distribution	Set distribution software	Add distribution software	Duration between the start time and end time for executing specified file
		Display downloaded message	Software distribution	Set distribution software	Add distribution software	Display notification message when downloading message on the software download window
		Download message	Software distribution	Set distribution software	Add distribution software	Notification message

Patch registration window

MC Window Earlier Versions			V15 main menu			
Function Category	Sub-category	Item	Function Category	Main Category	Sub-category	Item
Patch details	-	Set the registered patches as distribution objects	Software distribution	Set distribution software		
		Name	Software distribution	Set distribution software		Name
		Description	None			

MC Window Earlier Versions			V15 main menu			
Function Category	Sub-category	Item	Function Category	Main Category	Sub-category	Item
	Select download source	URL of public server	None			
		File position	Software distribution	Set distribution software	Security patch	Method of registering security patches Register the downloaded security patches
		Browse patch information	Software distribution	Set distribution software	Security patch	Details
	Download execution file	File name	None			
		Parameter	None			
		Automatically download from the CT	None			

Software Dictionary (Enterprise, local) - software license definition

MC Window Earlier Versions			V15 main menu			
Function Category	Sub-category	Item	Function Category	Main Category	Sub-category	Item
Software License definition	License information	License group	Environment setup	Set monitoring software		Software dictionary group
		License code	Environment setup	Set monitoring software		Software code
		Version	None			
		Application name	Environment setup	Set monitoring software		Name
		Version	Environment setup	Set monitoring software		Version
		Number of License resets	None			
	File Search	Enable settings	Environment setup	Set monitoring software	Add user definition	File search Search all files with the same condition
		File name	Environment setup	Set monitoring software	Add user definition	File name
	File search - details	File name	Environment setup	Set monitoring software	Add user definition	File name

MC Window Earlier Versions			V15 main menu			
Function Category	Sub-category	Item	Function Category	Main Category	Sub-category	Item
		Object -Folder -Directory	Environment setup	Set monitoring software	Add user definition	File name Folder name
		Search files according to file update time	Environment setup	Set monitoring software	Add user definition	Search files according to file update time
		Search conditions -year, month, day -equal to, from (a range), before, after	Environment setup	Set monitoring software	Add user definition	Search files according to file update time -year, month, day -equal to, from (a range), before, after
		Search files according to file size	Environment setup	Set monitoring software	Add user definition	Search files according to file size
		Size	Environment setup	Set monitoring software	Add user definition	Search files according to file size
		Search conditions -equal to, larger than, less than	Environment setup	Set monitoring software	Add user definition	Search files according to file size -equal to, larger than, less than
		Search based on version information	Environment setup	Set monitoring software	Add user definition	Search based on version information
		Search conditions -Version information -Equal to, larger than	Environment setup	Set monitoring software	Add user definition	Search based on version information -Version information -Equal to, larger than
	Registry search Information about Add or Remove Programs	Search application name	Environment setup	Set monitoring software	Add user definition	Search the information about Add or Remove Programs by application name
	Registry search Any registry information	Any search key or value	Environment setup	Set monitoring software	Add user definition	Registry search

MC Window Earlier Versions			V15 main menu			
Function Category	Sub-category	Item	Function Category	Main Category	Sub-category	Item
						Search any key or value
		Search conditions -Key name -Key value name -Key value -Search 32-bit applications in 64-bit OS	Environment setup	Set monitoring software	Add user definition	Registry search -Key name -Key value name -In 64-bit OS
	Software running status	Object file	Environment setup	Set monitoring software	Add user definition	Software running status Specify object files
	Software running status -details	Software running status File	Environment setup	Set monitoring software	Add user definition	Software running status Object file name
		Use PE title	Environment setup	Set monitoring software	Add user definition	Software running status Use PE title/Not use PE title
	License relation definition	Enable settings	Environment setup	Set monitoring software	Add user definition	Combined conditions
	License relation definition-details	License code	Environment setup	Set monitoring software	Add user definition	Combined conditions
		Operators -AND, OR, NOT, ()	Environment setup	Set monitoring software	Add user definition	Combined conditions All conditions consistent, certain conditions consistent, included, excluded

Other items

MC Window Earlier Versions			V15 main menu			
Function Category	Sub-category	Item	Function Category	Main Category	Sub-category	Item
Software dictionary	-	Creation date of software dictionary	Environment setup	Set monitoring software		Creation date of software

MC Window Earlier Versions			V15 main menu			
Function Category	Sub-category	Item	Function Category	Main Category	Sub-category	Item
						dictionary in the support center
		Update date of software dictionary	Environment setup	Set monitoring software		Update date of software dictionary
Server list	-	Server name	Environment setup	CS/DS settings and working situation		CS/DS name
		Host name	Environment setup	CS/DS settings and working situation		Host name
		Release status	Environment setup	CS/DS settings and working situation		Setting reflection status
		Running status	Environment setup	CS/DS settings and working situation		Running status
		Error information	Environment setup	CS/DS settings and working situation		Setting reflection status