

FUJITSU Software

Systemwalker Desktop Patrol

A decorative horizontal band with a red-to-dark-red gradient, featuring abstract, glowing white and red lines that swirl and intersect, creating a sense of motion and technology.

Release Information

Windows

B1WD-3285-06ENZ0(00)
February 2017

Preface

Purpose of this guide

This guide explains the additional functions, improved functions, and incompatibilities for the following product.

- Systemwalker Desktop Patrol V15.1.3

Systemwalker is a generic name for the distributed system management product provided by Fujitsu Limited.

Intended readers

This guide is for the following readers.

- Those who wish to learn about the additional functions and improved functions of Systemwalker Desktop Patrol.
- Those who wish to learn about the incompatibilities of Systemwalker Desktop Patrol.

Structure of this guide

The structure of this guide is as follows:

[Chapter 1 Overview of Added and Modified Functions](#)

This chapter describes the functions that are added or modified when Systemwalker Desktop Patrol is upgraded to this version, and also describes the functions that were added or modified in previous versions.

[Chapter 2 List of Incompatible Items](#)

This chapter describes items that become incompatible with Systemwalker Desktop Patrol after a version upgrade.

[Chapter 3 Migration to This Product](#)

[Appendix A Term Table](#)

This appendix lists the terms changed in Systemwalker Desktop Patrol V14.2.0 or later.

[Appendix B Window Operation Table](#)

This appendix lists the operations changed between Systemwalker Desktop Patrol V13.2.0 and V14.2.0.

Location of this guide

In Systemwalker Desktop Patrol manual, location of this guide is shown as follows.

Manual Name	Contents
Release Information (this guide)	Functions modified and added to Systemwalker Desktop Patrol, and items that become incompatible after a version upgrade.
User's Guide	Basic knowledge of Systemwalker Desktop Patrol, such as overview, features, functions, etc.
Installation Guide	How to perform installation settings, change operation environment, maintain and manage Systemwalker Desktop Patrol.
Operation Guide: for Administrators	How to collect PC information, install security patches, distribute software, license management, management ledger, and environment setup of Systemwalker Desktop Patrol.
Operation Guide: for Clients	How to install, operate and change the settings of the client side. In addition, it explains how to handle error messages output from client side.

Manual Name	Contents
Reference Manual	Commands, files and port numbers used in Systemwalker Desktop Patrol. In addition, it explains how to handle error message output from Systemwalker Desktop Patrol.
Centralized Management Guide	How to centrally manage Systemwalker Desktop Patrol deployed at sites within and outside Japan.

Also, the following manuals are enclosed as Systemwalker Live Help manuals. Refer to them when you use the remote operation function (Systemwalker Live Help Function).

Manual Name	Contents
Systemwalker Live Help User's Guide	It explains how to install Systemwalker Live Help, how to use the hardware and software and set the support center. In addition, it also explains how to manage by Live Help Connection Manager.
Systemwalker Live Help Client Guide	It explains how to install, use and set Systemwalker Live Help Client.

Symbols used in this guide

This guide uses the following names, symbols and abbreviations for explications.

Symbols used in commands

This subsection describes the symbols used in the examples of commands.

Meaning of symbols

Symbol	Meaning
[]	Indicates that the items enclosed in these brackets can be omitted.
	Indicates that one of the items separated by this symbol should be specified.
{ }	Indicates that one of the items enclosed in these symbols should be specified.

Symbols used in this guide

The following symbols are used in this guide.

Meaning of symbols

Symbol	Meaning
<i>n</i>	Indicates variable value.



Note

Indicates an item requires special attention.



Point

Indicates useful information.

DTP installation directory

The directory in which Systemwalker Desktop Patrol CS, Systemwalker Desktop Patrol DS, Systemwalker Desktop Patrol AC, Systemwalker Desktop Patrol ADT, Systemwalker Desktop Patrol CT or Systemwalker Desktop Patrol SS is installed is indicated as the DTP installation directory.

Abbreviations

In this guide, the product names are abbreviated as follows.

Product Name	Abbreviation
Systemwalker Desktop Patrol CS	CS
Systemwalker Desktop Patrol DS	DS
Systemwalker Desktop Patrol AC	AC
Systemwalker Desktop Patrol ADT	ADT
Systemwalker Desktop Patrol CT	CT
Systemwalker Desktop Patrol SS	SS
Systemwalker Desktop Patrol Client	Smart device CT

In this guide, the operating system names are abbreviated as follows.

Abbreviation	Full Name
Windows Server(R) 2016	Microsoft(R) Windows Server(R) 2016 Datacenter Microsoft(R) Windows Server(R) 2016 Standard Microsoft(R) Windows Server(R) 2016 Essentials
Windows Server(R) 2012 R2	Microsoft(R) Windows Server(R) 2012 R2 Standard Microsoft(R) Windows Server(R) 2012 R2 Essentials Microsoft(R) Windows Server(R) 2012 R2 Foundation Microsoft(R) Windows Server(R) 2012 R2 Datacenter
Windows Server(R) 2012	Microsoft(R) Windows Server(R) 2012 Standard Microsoft(R) Windows Server(R) 2012 Essentials Microsoft(R) Windows Server(R) 2012 Foundation Microsoft(R) Windows Server(R) 2012 Datacenter Microsoft(R) Windows Server(R) 2012 R2 Standard Microsoft(R) Windows Server(R) 2012 R2 Essentials Microsoft(R) Windows Server(R) 2012 R2 Foundation Microsoft(R) Windows Server(R) 2012 R2 Datacenter
Windows Server(R) 2008 R2	Microsoft(R) Windows Server(R) 2008 R2 Foundation Microsoft(R) Windows Server(R) 2008 R2 Standard Microsoft(R) Windows Server(R) 2008 R2 Enterprise
Windows Server(R) 2008	Microsoft(R) Windows Server(R) 2008 Foundation Microsoft(R) Windows Server(R) 2008 Standard Microsoft(R) Windows Server(R) 2008 Enterprise Microsoft(R) Windows Server(R) 2008 Standard without Hyper-V(TM) Microsoft(R) Windows Server(R) 2008 Enterprise without Hyper-V(TM) Microsoft(R) Windows Server(R) 2008 Standard 64-bit Edition Microsoft(R) Windows Server(R) 2008 Enterprise 64-bit Edition Microsoft(R) Windows Server(R) 2008 Standard without Hyper-V(TM) 64-bit Edition Microsoft(R) Windows Server(R) 2008 Enterprise without Hyper-V(TM) 64-bit Edition Microsoft(R) Windows Server(R) 2008 R2 Foundation

Abbreviation	Full Name
	Microsoft(R) Windows Server(R) 2008 R2 Standard Microsoft(R) Windows Server(R) 2008 R2 Enterprise
Windows(R) 10	Windows(R) 10 Home Windows(R) 10 Pro Windows(R) 10 Enterprise Windows(R) 10 Education Windows(R) 10 Home 64-bit Edition Windows(R) 10 Pro 64-bit Edition Windows(R) 10 Enterprise 64-bit Edition Windows(R) 10 Education 64-bit Edition
Windows(R) 8.1	Windows(R) 8.1 Windows(R) 8.1 Pro Windows(R) 8.1 Enterprise Windows(R) 8.1 64-bit Edition Windows(R) 8.1 Pro 64-bit Edition Windows(R) 8.1 Enterprise 64-bit Edition
Windows(R) 8	Windows(R) 8 Windows(R) 8 Pro Windows(R) 8 Enterprise Windows(R) 8 64-bit Edition Windows(R) 8 Pro 64-bit Edition Windows(R) 8 Enterprise 64-bit Edition Windows(R) 8.1 Windows(R) 8.1 Pro Windows(R) 8.1 Enterprise Windows(R) 8.1 64-bit Edition Windows(R) 8.1 Pro 64-bit Edition Windows(R) 8.1 Enterprise 64-bit Edition
Windows(R) 7	Windows(R) 7 Enterprise Windows(R) 7 Ultimate Windows(R) 7 Professional Windows(R) 7 Home Premium Windows(R) 7 Enterprise 64-bit Edition Windows(R) 7 Ultimate 64-bit Edition Windows(R) 7 Professional 64-bit Edition Windows(R) 7 Home Premium 64-bit Edition
Windows Vista(R)	Microsoft(R) Windows Vista(R) Ultimate Microsoft(R) Windows Vista(R) Enterprise Microsoft(R) Windows Vista(R) Business Microsoft(R) Windows Vista(R) Home Premium Microsoft(R) Windows Vista(R) Home Basic Microsoft(R) Windows Vista(R) Ultimate 64-bit Edition Microsoft(R) Windows Vista(R) Enterprise 64-bit Edition Microsoft(R) Windows Vista(R) Business 64-bit Edition Microsoft(R) Windows Vista(R) Home Premium 64-bit Edition Microsoft(R) Windows Vista(R) Home Basic 64-bit Edition
Windows	Microsoft(R) Windows Server(R) 2012 R2 Standard Microsoft(R) Windows Server(R) 2012 R2 Essentials Microsoft(R) Windows Server(R) 2012 R2 Foundation Microsoft(R) Windows Server(R) 2012 R2 Datacenter Microsoft(R) Windows Server(R) 2012 Standard Microsoft(R) Windows Server(R) 2012 Essentials Microsoft(R) Windows Server(R) 2012 Foundation Microsoft(R) Windows Server(R) 2012 Datacenter

Abbreviation	Full Name
	<p>Microsoft(R) Windows Server(R) 2008 Foundation Microsoft(R) Windows Server(R) 2008 Standard Microsoft(R) Windows Server(R) 2008 Enterprise Microsoft(R) Windows Server(R) 2008 Standard without Hyper-V(TM) Microsoft(R) Windows Server(R) 2008 Enterprise without Hyper-V(TM) Microsoft(R) Windows Server(R) 2008 Standard 64-bit Edition Microsoft(R) Windows Server(R) 2008 Enterprise 64-bit Edition Microsoft(R) Windows Server(R) 2008 Standard without Hyper-V(TM) 64-bit Edition Microsoft(R) Windows Server(R) 2008 Enterprise without Hyper-V(TM) 64-bit Edition Microsoft(R) Windows Server(R) 2008 R2 Foundation Microsoft(R) Windows Server(R) 2008 R2 Standard Microsoft(R) Windows Server(R) 2008 R2 Enterprise Windows(R) 10 Home Windows(R) 10 Pro Windows(R) 10 Enterprise Windows(R) 10 Education Windows(R) 10 Home 64-bit Edition Windows(R) 10 Pro 64-bit Edition Windows(R) 10 Enterprise 64-bit Edition Windows(R) 10 Education 64-bit Edition Windows(R) 8.1 Windows(R) 8.1 Pro Windows(R) 8.1 Enterprise Windows(R) 8.1 64-bit Edition Windows(R) 8.1 Pro 64-bit Edition Windows(R) 8.1 Enterprise 64-bit Edition Windows(R) 8 Windows(R) 8 Pro Windows(R) 8 Enterprise Windows(R) 8 64-bit Edition Windows(R) 8 Pro 64-bit Edition Windows(R) 8 Enterprise 64-bit Edition Windows(R) 7 Enterprise Windows(R) 7 Ultimate Windows(R) 7 Professional Windows(R) 7 Home Premium Windows(R) 7 Enterprise 64-bit Edition Windows(R) 7 Ultimate 64-bit Edition Windows(R) 7 Professional 64-bit Edition Windows(R) 7 Home Premium 64-bit Edition Microsoft(R) Windows Vista(R) Ultimate Microsoft(R) Windows Vista(R) Enterprise Microsoft(R) Windows Vista(R) Business Microsoft(R) Windows Vista(R) Home Premium Microsoft(R) Windows Vista(R) Home Basic Microsoft(R) Windows Vista(R) Ultimate 64-bit Edition Microsoft(R) Windows Vista(R) Enterprise 64-bit Edition Microsoft(R) Windows Vista(R) Business 64-bit Edition Microsoft(R) Windows Vista(R) Home Premium 64-bit Edition Microsoft(R) Windows Vista(R) Home Basic 64-bit Edition</p>
IIS	<p>Internet Information Services 6.0 Internet Information Services 7.0 Internet Information Services 7.5 Internet Information Services 8.0</p>

Abbreviation	Full Name
	Internet Information Services 8.5 Internet Information Services 10.0
IE	Windows(R) Internet Explorer(R) 7 Windows(R) Internet Explorer(R) 8 Windows(R) Internet Explorer(R) 9 Windows(R) Internet Explorer(R) 10 Windows(R) Internet Explorer(R) 11
Edge	Microsoft Edge(TM)
Android	Android(TM) 3.0 - Android(TM) 7.0
iOS	iOS 5.0 - iOS 10.1

Shortcuts in the Start window of Windows(R) 8 and Windows Server(R) 2012

To check which product a shortcut in the **Start** window is for, right-click the shortcut and click **Open File Location** from the menu at the bottom of the screen. This will open the file location in **Windows Explorer**, where the product name can be checked.

Halfwidth characters

In this guide, the "halfwidth characters to be handled" refer to the following ASCII characters, except in places where limitations for the halfwidth characters that can be used are described.

- Halfwidth spaces
- Halfwidth symbols
! " # \$ % & ' () * + , - . / : ; < = > ? @ [\] ^ _ ` { | } ~
- Halfwidth numbers
0 1 ... 9
- Halfwidth alphabetic characters
A B ... Z
a b ... z

Characters other than the above are treated as fullwidth characters.

Version notation

The following versions of this product do not have an English version - ignore references to them.

- Systemwalker Desktop Patrol V12.0L10
- Systemwalker Desktop Patrol V13.3.0
- Systemwalker Desktop Patrol V14.0.0
- Systemwalker Desktop Patrol V14.0.1
- Systemwalker Desktop Patrol V14.1.0
- Systemwalker Desktop Patrol V14.3.0
- Systemwalker Desktop Patrol V14.3.1
- Systemwalker Desktop Patrol V15.0.0
- Systemwalker Desktop Patrol V15.0.1

For example, read "V15.0.1 or later" as "V14.2.0 or later", because V15.0.1 does not have an English version.

Likewise, read "V14.0.0 or earlier" as "V13.2.0 or earlier", because V14.3.1 does not have an English version.

The table below shows the available versions:

Japanese version	English version
V11.0L10	V11.0L10
V12.0L10	V11.0L10
V13.0.0	V13.0.0
V13.2.0/V13.2.1	V13.2.0
V13.3.0	V13.2.0
V14.0.0/V14.0.1	V13.2.0
V14.1.0	V13.2.0
V14.2.0	V14.2.0
V14.3.0	V14.2.0
V14.3.1	V14.2.0
V15.0.0	V14.2.0
V15.0.1	V14.2.0
V15.1.0	V15.1.0
V15.1.1	V15.1.1
V15.1.3	V15.1.3

Export management regulations

Exportation/release of this document may require necessary procedures in accordance with the regulations of your resident country and/or US export control laws.

Trademark

Intel, Intel vPro and Centrino are trademarks or registered trademarks of Intel Corporation or its subsidiaries in the United States and other countries.

Microsoft, Windows, Windows NT, Windows Vista, Windows Server, Active Directory and names or product names of other Microsoft's products are registered trademarks of Microsoft Corporation in the United States and other countries

Oracle is the registered trademark of Oracle Corporation.

Symantec, the Symantec logo, and Norton AntiVirus are registered trademarks of Symantec Corporation in the United States.

VirusBuster is registered trademark of Trend Micro Ltd.

VirusScan and NetShield are trademarks or registered trademarks of Network Associates, Inc. or its affiliates.

Google, the Google logo, Android, the Android logo, Google Play, the Google Play logo, Gmail, and the Gmail logo are trademarks or registered trademarks of Google Inc.

Wi-Fi is a registered trademark of Wi-Fi Alliance.

IOS is a trademark or registered trademark of Cisco in the U.S. and other countries and is used under license.

Apple, the Apple logo, and Mac OS are trademarks of Apple Inc., registered in the United States and other countries.

All other trademarks are the property of their respective owners.

Screen shots are used in accordance with Microsoft Corporation's guidelines.

February 2017

First edition, July 2015

Second edition, November 2015

Third edition, February 2017

Copyright 2002 - 2017 FUJITSU LIMITED

Contents

Chapter 1 Overview of Added and Modified Functions.....	1
1.1 Summary of Added Functions.....	1
1.2 Summary of Changed Functions.....	1
1.3 Functions Added and Modified in Previous Versions.....	2
1.3.1 Modified Functions in V15.1.1.....	2
1.3.2 Added and Modified Functions in V15.1.0.....	3
1.3.3 Added and Modified Functions in V14.2.0.....	7
1.3.4 Added and Modified Functions in V13.2.0.....	22
1.3.5 Added and Modified Functions in V13.0.0.....	26
Chapter 2 List of Incompatible Items.....	32
2.1 Upgrade from V11.0L10.....	32
2.1.1 Incompatible Operating Environment.....	32
2.1.2 Function Incompatibility.....	33
2.2 Upgrade from V13.0.0.....	36
2.2.1 Incompatible Items.....	36
2.3 Upgrade from V13.2.0.....	40
2.3.1 Incompatible Operating Environment.....	40
2.3.2 Function Incompatibility.....	41
2.4 Upgrade from V13.3.0.....	43
2.4.1 Function Incompatibility.....	43
2.5 Upgrade from V14.2.0.....	47
2.5.1 Incompatible Operating Environment.....	47
2.5.2 Function Incompatibility.....	50
2.6 Upgrade from V15.1.0.....	53
2.7 Upgrade from V15.1.1.....	53
2.7.1 Function Incompatibility.....	53
Chapter 3 Migration to This Product.....	54
Appendix A Term Table.....	55
Appendix B Window Operation Table.....	58
B.1 MC Window in Earlier Versions.....	58

Chapter 1 Overview of Added and Modified Functions

This chapter describes the functions newly added to and changed in this version of Systemwalker Desktop Patrol.

1.1 Summary of Added Functions

There are no new features in Systemwalker Desktop Patrol V15.1.3.

1.2 Summary of Changed Functions

This section describes the functions changed in Systemwalker Desktop Patrol V15.1.3.

Addition of OS

The following OS are supported.

- Windows Server(R) 2016
- Android 7.0
- iOS 9.0 to 10.1

Refer to "Operating System" in the *User's Guide* for details.

Additional required software

The following software products are now required:

- Microsoft(R) Office 2016
- Microsoft(R) Excel 2016
- Microsoft(R) Visio 2016
- Microsoft Edge(TM)
- Internet Information Services 10.0

Refer to "Required Software" in the *User's Guide* for details.

Enhanced Security

Extension of the CT usage environment (connecting from the High Security CT to CS/DS over the Internet (via SS))

It is now possible for CT (High Security CT) to connect to CS/DS via SS over the Internet, by installing SS on the DMZ. Communication between SS and the High Security CT is encrypted as secure communication, for enhanced security.

In line with the enhancement to security described above, the following changes were made:

- Port number 38443 can now be specified for secure communication
- The name of SS (Smartdevice Server) has been changed to SS (Smartdevice and Secure server)

Addition of supported virtual operating systems

The following virtual operating systems are now supported:

- CS/DS
 - VMware vSphere 6
 - VMware vSphere 6.5
- CT/AC/ADT
 - VMware vSphere 6
 - VMware vSphere 6.5

- VMware Horizon View 6.1
- VMware Horizon View 6.2
- VMware Horizon View 7
- Citrix XenDesktop 7.7
- Citrix XenDesktop 7.8
- Citrix XenDesktop 7.9
- Citrix XenDesktop 7.11

Addition of linkage services

The following services are now supported:

- Virtual desktop service V-DaaS

Other improvements

The following functions have been enhanced:

- Specification of the log output destination for silent installation of servers

The installation log output destination can now be specified when performing silent installation of servers.

- Network bandwidth control between the server (CS/DS) and CT

The network bandwidth can now be controlled between the server (CS/DS) and CT for the following items:

- Distribution of client policies
- Software distribution
- Security patch distribution
- File distribution
- Distribution of the updater
- Inventory information notifications
- Management Ledger

The following features of the Management Ledger have been enhanced:

- Batch deletion of unused classes and types
- Device search method
- Detected device reflection has new commands
- Permissions for collective registration/changing of unregistered users
- Prohibition of notification of device information from undefined segments detected by segment
- Extension of the input area of window item names

1.3 Functions Added and Modified in Previous Versions

This section describes the functions added and modified in previous versions of Systemwalker Desktop Patrol.

1.3.1 Modified Functions in V15.1.1

This section describes the functions modified in Systemwalker Desktop Patrol V15.1.1.

Addition of OS

The following OS are supported.

- Windows(R) 10
- Android 5.1
- iOS 8.2 to 8.4

Refer to "Operating System" in the *User's Guide* for details.

1.3.2 Added and Modified Functions in V15.1.0

This section describes the functions modified in Systemwalker Desktop Patrol V15.1.0.

Additional operating systems supported

The following operating systems are now supported:

- Windows Server(R) 2012 R2
- Windows Server(R) 2012
- Windows(R) 8.1
- Windows(R) 8
- Android 3.0 - 5.0
- iOS 5.0 - 8.1

Refer to "Operating System" in the *User's Guide* for details.

Point

- The license for Windows(R) 8.1 is included in and managed by the Windows(R) 8 license. It can be upgraded from Windows(R) 8 free of charge, and therefore is managed as the same license.
 - The licenses for Windows Server(R) 2012 R2 and Windows Server(R) 2012 are managed separately. It cannot be upgraded from Windows(R) Server2012 free of charge, and therefore the licenses are managed separately.
 - The licenses can be defined in the Software Dictionary (**Environment Setup** > **Software Auditing** in the main menu) as follows:
 - The license for Windows(R) 8.1 is defined as included in the Windows(R) 8 license.
 - Windows Server(R) 2012 R2 and Windows Server(R) 2012 licenses are defined separately.
-

Additional required software

The following software products are now required:

- Windows(R) Internet Explorer(R) 11
- Windows(R) Internet Explorer(R) 10
- Internet Information Services 8.5
- Internet Information Services 8.0
- Microsoft(R) Office Personal 2013
- Microsoft(R) Office Home and Business 2013
- Microsoft(R) Office Professional 2013
- Microsoft(R) Visio(R) Standard 2013
- Microsoft(R) Visio(R) Professional 2013

Refer to "Required Software" in the *User's Guide* for details.

Smart device management feature

Inventory information on smart devices can now be collected and managed via the main menu and management ledger.

Collecting inventory information

Using smart device CT

Install the smart device CT on smart devices, and collect inventory information. The key inventory information items that can be collected are as follows:

- CT information (CT version, collection datetime, user ID, etc)
- Operating system information (operating system name, build number, Android ID, etc)
- Hardware information (brand name, phone number, memory size, model name, total/available space, etc)
- Wi-Fi information (host name, MAC address, IP address, etc)
- Account information (account type, account name)
- Application information (application name, package name, version)

Viewing and managing collected information

Via the main menu

As system administrator, click **Asset Management** > **Smart Devices** in the main menu, and then one of the following:

- Smart device information
- Application information
- Security information

Via the management ledger

Smart devices registered with **Class** set to "Smart device" and **Type** set to "Client" can be viewed and managed as follows:

- Displaying the Ledger window
- Editing the Ledger
- Outputting as a report

Application distribution to smart devices

Applications can now be distributed to smart devices (Android and iOS devices).

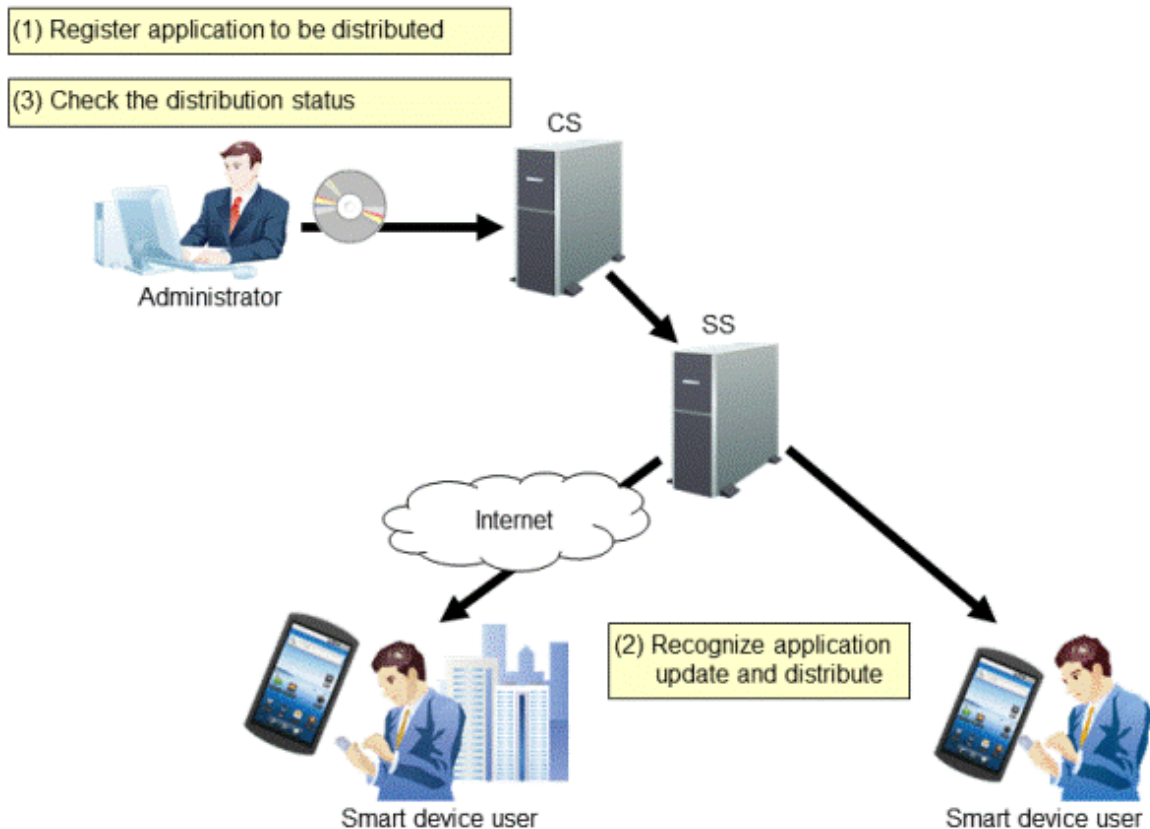


The Android(TM) native application (apk file) or the iOS native application (ipa file and manifest file) can be distributed.

The administrator can perform the following management tasks from the main menu.

- Distribute a specific application to the smart device.
- Check the installation status of application on the smart device.

The smart device user, however, must approve the installation of the distributed application.



IPv6-supported

In addition to IPv4 environments, IPv6-only environments and IPv4 and IPv6 dual stack environments are also supported now. As a result, the following are now possible:

- IPv6 communication
- IPv6 network information collection

The collected network information can also be managed via the management ledger.

Simplified CS installation (standard installation)

Two installation types are now provided:

- Standard installation

Uses default values to install and build with ease in environments with up to 300 managed devices.

- Custom installation

Allows the user to specify values other than default ones for all settings during installation.

Standard installation allows the process from installation to inventory collection to be completed in simple steps. Note that standard installation allows settings for large-scale operations and smart device operations to be changed.

Installer improvements

The installer has been improved in the following ways:

- Improvement in the remote operation function installation

In previous versions, the remote operation function had to be installed separately from CT. In this version, the installer has been improved so that the remote operation function and CT are installed together.

- Improvement in the standard database installation

In previous versions, if Symfoware had been installed in the installation destination environment, co-existing was not possible. In this version, installation has been improved so that this product can be installed or uninstalled regardless of whether Symfoware exists in the installation destination.

Additional display items for the Status window

The following PC/device/contract status can now be checked in the **Status** window (the top window of the main menu).

- PCs on which unlicensed software is installed
Contains the number of PCs in which the software is installed but license is not assigned.
- Expired contracts
Contains the number of expired contracts.
- Contracts about to expire
Contains the number of contracts about to expire.
- Devices for which stocktaking is not yet complete
Contains the number of devices for which stocktaking is not yet completed.
- Devices detected as unregistered devices
Contains the number of devices for which registration is not yet completed.
Here, "unregistered devices" refers to devices that have not been registered in the asset ledger.

GUI for master management (user management information)

In previous versions, a master management information file had to be created and uploaded using either a command or the main menu in order to register, change, and delete the user management information in master management. In this version, the user management information can be registered, changed, and deleted through the main menu operations alone, without having to create a master management information file.

GUI for Active Directory linkage settings

In previous versions, commands had to be used to configure the environment information required for the Active Directory linkage. In this version, the environment setup can be completed through the main menu operations alone.

Monitoring for unauthorized connections

This product provides a function that can auto-detect device information and manage unregistered devices, which allows the user to check the devices that are not registered in the management ledger and keep it up-to-date. In this version, the function to detect the device information has been improved so it can now also be used for monitoring devices connected to without permission (devices that are not managed or authorized in the ledger).

Running files in the background after being distributed

In file distribution, files with the following extensions can now be run in the background:

- ".exe", ".bat", ".msi", ".vbs", ".wsf"

Batch backup and restore

Backup and restore of the operating environment information, registered and distributed software, and database can now be performed in batch.

Native support for 64-bit Windows

Native support is now provided for 64-bit Windows in CS.

Checking the operational status of CS/DS

Operational status of the distribution server function and inventory collection function of CS/DS can now be checked.

Software Asset Management (SAM) support

To support the customer's Software Asset Management that complies with ISO/IEC 19770-1:2006 (the international standards for Software Asset Management) and JIS X0164-1:2010 (the Japanese industrial standards), the following functions have been added:

- SAM support for the license management function
- Importing the SAMAC Software Dictionary

License Validation

This function validates the Systemwalker Desktop Patrol license.

Refer to the *Installation Guide* for details.

Other improvements

The following functions have been improved or enhanced:

- System administrators who do not belong to a section can now use all functions.
- Phone number, fax number, and email address have been added to the **Detail of Device** window.
- The monitoring period can now be set in the **Set Contract Expiration Notification** tab in **Management Ledger Settings** regardless of the schedule settings.
- CT installation in an Active Directory environment
CT can now be extracted and installed in an Active Directory environment.
- CS operation details log output
Detailed information is now output to the CS operation log.

1.3.3 Added and Modified Functions in V14.2.0

This section describes the added and modified functions in Systemwalker Desktop Patrol V14.2.0.

Support mobile PC operation

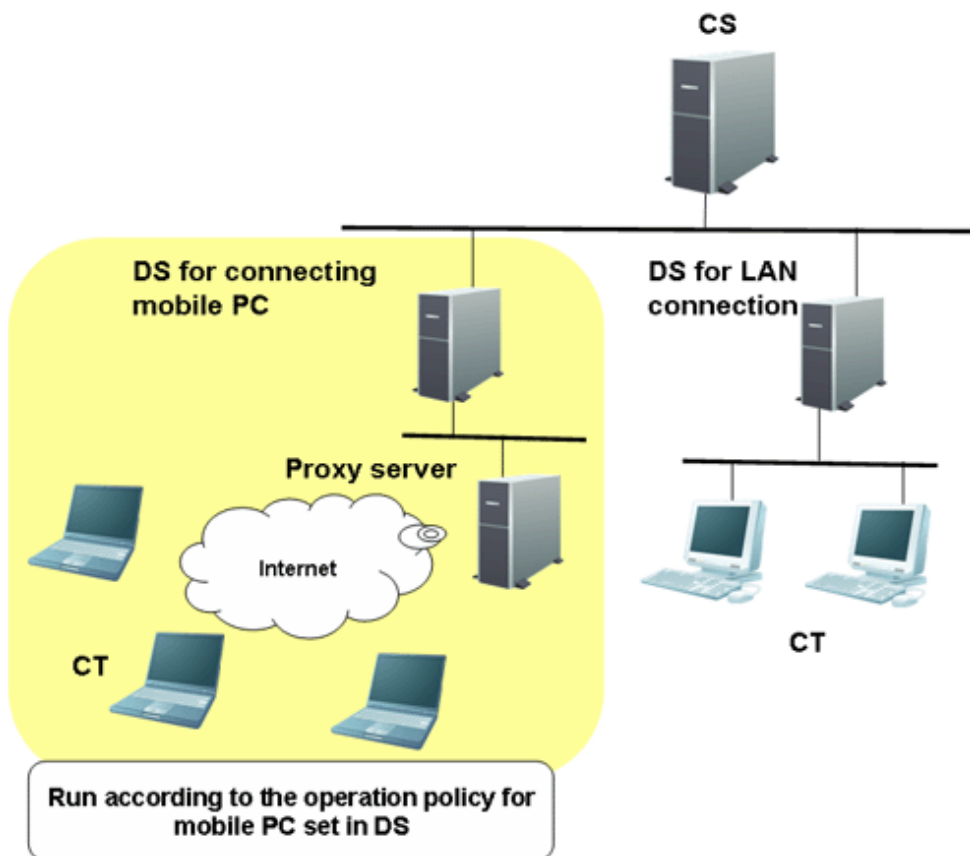
When performing mobile operation by connecting from external used VPN (Virtual Private Network) to the internal part of company, the following operating policies can be set for Systemwalker Desktop Patrol CT on the mobile PC. Through setting operation policy, even in the mobile PC that does not connect to network in usual time, assets management through Systemwalker Desktop Patrol should also be performed.

- Operation policy for assets management of mobile PC
- Operation policy for load reduction of mobile PC

The above settings are used for setting Systemwalker Desktop Patrol DS for mobile connection and performing settings for Systemwalker Desktop Patrol DS as well.

The mobile PC runs through connecting to the Systemwalker Desktop Patrol DS according to the operation policy that has been set.

The image diagram of mobile PC operation is shown below.



Enhance security auditing

Add the following security auditing item and enable auditing by the **PC Information > Security Information** window of "Desktop Patrol Main Menu".

- Hardware
 - Set BIOS hardware password
- OS
 - Set the password of Guest account to audit inappropriate password.
 - Enable/Disable automatic update of Windows Update.
 - Disable/Enable user account control (UAC) of Windows Vista(R), Windows Server(R) 2008 and Windows(R) 7.
 - Existence of unsafe shared folder.
 - Set password of Windows logon user and audit inappropriate password.
- Application
 - Set firewall
 - Set real time scan of anti-virus software
 - Enable/Disable Google Desktop "Search Data on Multiple Computers"

Detect prohibited application

The application that is prohibited to be used can be confirmed through **PC Information > Software Auditing** of the main menu.

Alternatively, when the prohibited software has been installed, the information can be notified to the administrator through alarm notification function.

Enhance alarm notification function

When software has been added to or deleted from the client, alarm notification of the modification information can be performed.

Patch setting function of policy group

When it is expected to apply security patches selectively to a particular PC, you can select the security patches to be applied in each policy group and perform settings.

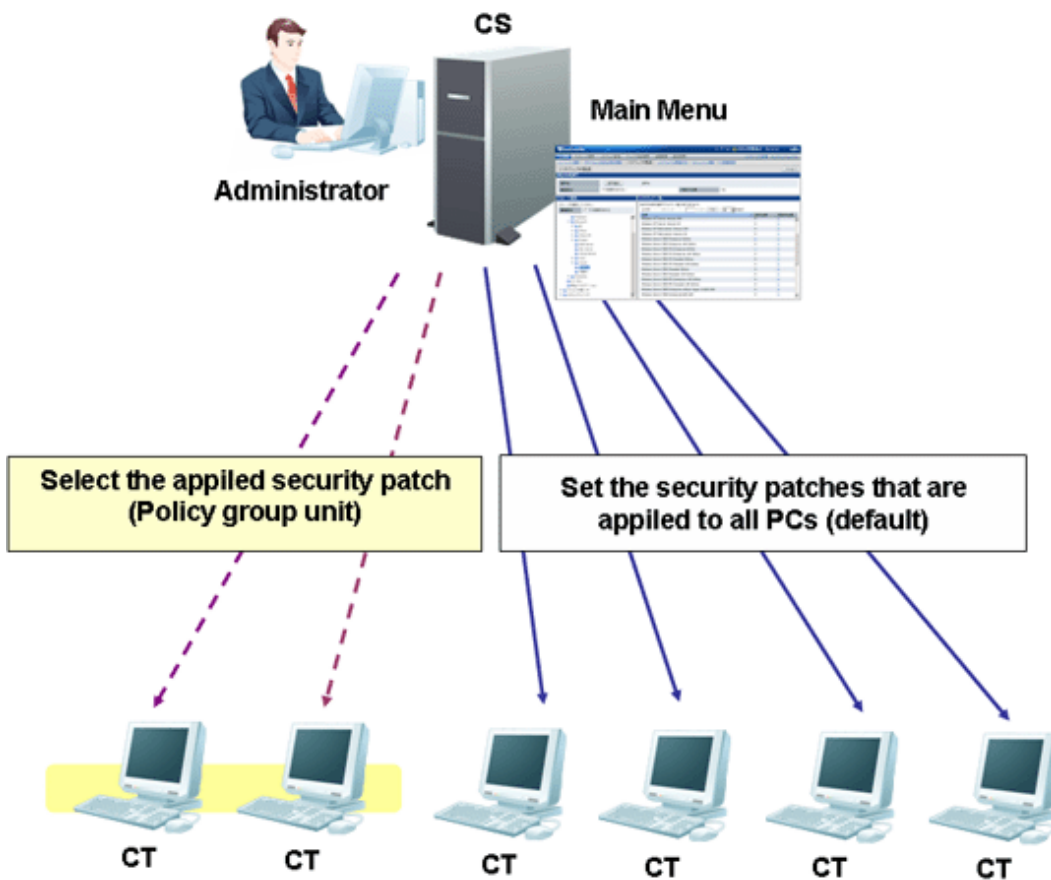
Based on this, for the PC with problem after applying a particular security patch, the exceptional patch can be applied.

When selecting the security patch to be applied, the following settings can be performed.

- Select the settings to apply security patches to a particular PC
- For a particular PC, set not to apply the security patches provided afterwards

The above settings can be used in combination.

The operation image diagram for applying security patches selectively to a particular PC is shown below.



For the PC that does not belong to the policy group, patch application can be performed according to the security patch settings selected in the **Distribution > Distribute Security Patches** window.

To apply security patches selectively to a particular PC, cancel the selection of security patch not to be applied in the **Environment Setup > Policy Groups > Customize Various Policies > Patch Application Policy** tab of the main menu.

Based on this, for PC that belongs to the policy group, it is possible to apply security patches selectively.

Enhance contents execution

The software distribution function has been enhanced.

- Add the file type that can be executed after downloading

Apart from ".exe" and ".bat", the following file type can be specified in executable file after software distribution.

- .msi
- .vbs
- .wsf

Output event log of CS and DS

When the following events occurred in Systemwalker Desktop Patrol CS or Systemwalker Desktop Patrol DS, event log will be output. The event occurred in Systemwalker Desktop Patrol can be audited through Systemwalker Centric Manager and other products.

Category	Description
Information	<ul style="list-style-type: none"> - Start or stop service - Download security patches from the public site of Microsoft
Alarm	When small trouble without any problem will still occur in spite of automatic recovery and continued action
Error	When the exception that affects operation occurred in CS or DS

Collect CS operation log

The operation log through the following window (definition modification, registration, deletion) and login/logout for Systemwalker Desktop Patrol CS can be collected

- Desktop Patrol Main Menu
- Desktop Patrol Download Menu

Patch application at Windows logon

The time of Windows logon has been added to the timing of applying security patches.

Based on this, same as the version of V11.0L10 or earlier, security patches can be applied at the timing of Windows logon.

Auditing/control of power saving and security

PC can be audited according to the power saving/security policy determined by administrator. If policy is violated, the warning will be displayed in the window of PC and user will be reminded for processing.

In addition, the item that violated policy can be modified by force. (Note)

Note) Modification may not be performed by force due to item.

In the auditing/control of power saving and security, the following functions can be used.

- Modification of display/settings of warning window to PC that violates policy by force
- Confirmation of control status of security/power saving according to report output

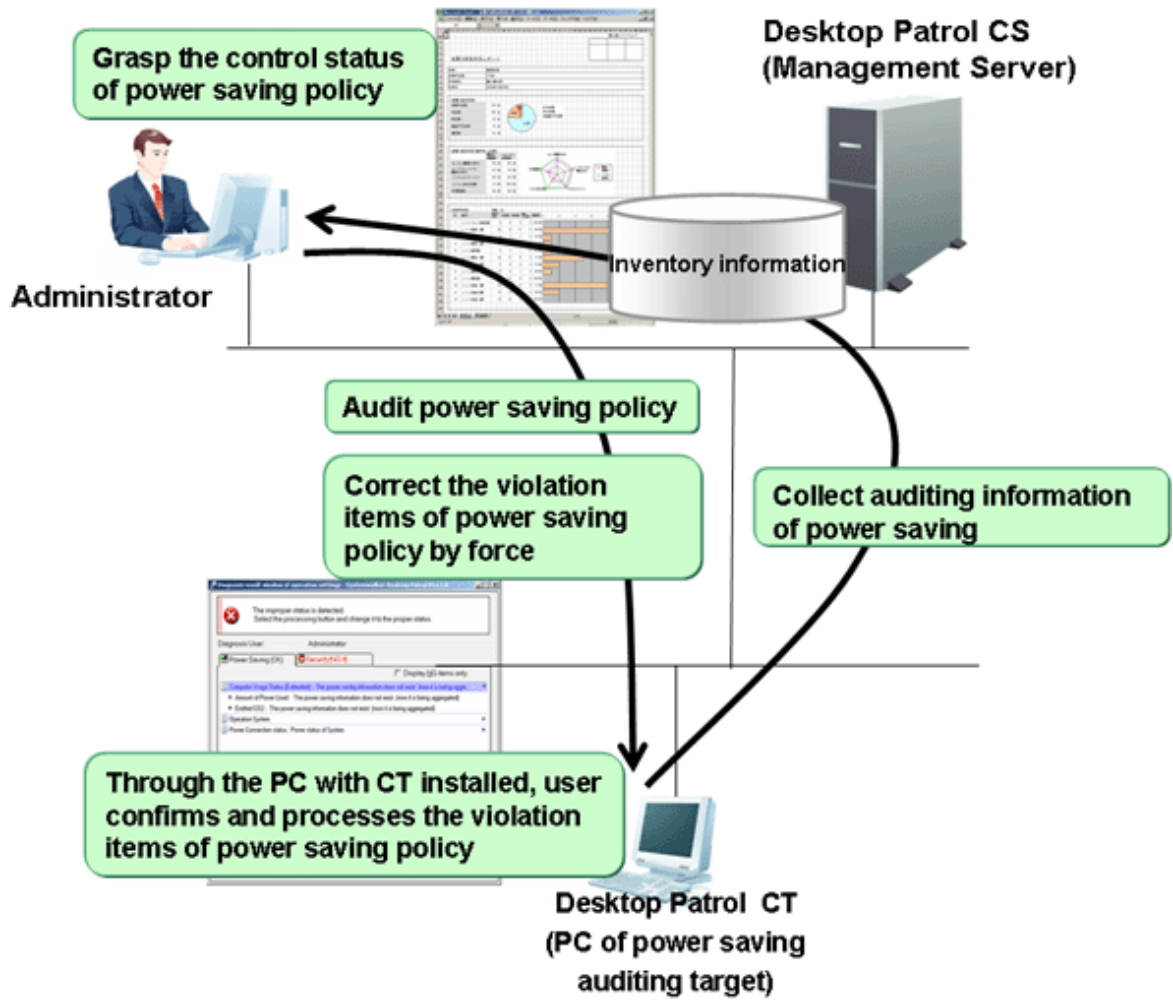
Auditing/control of power saving

The operation summary when performing auditing/control of power saving is shown below.

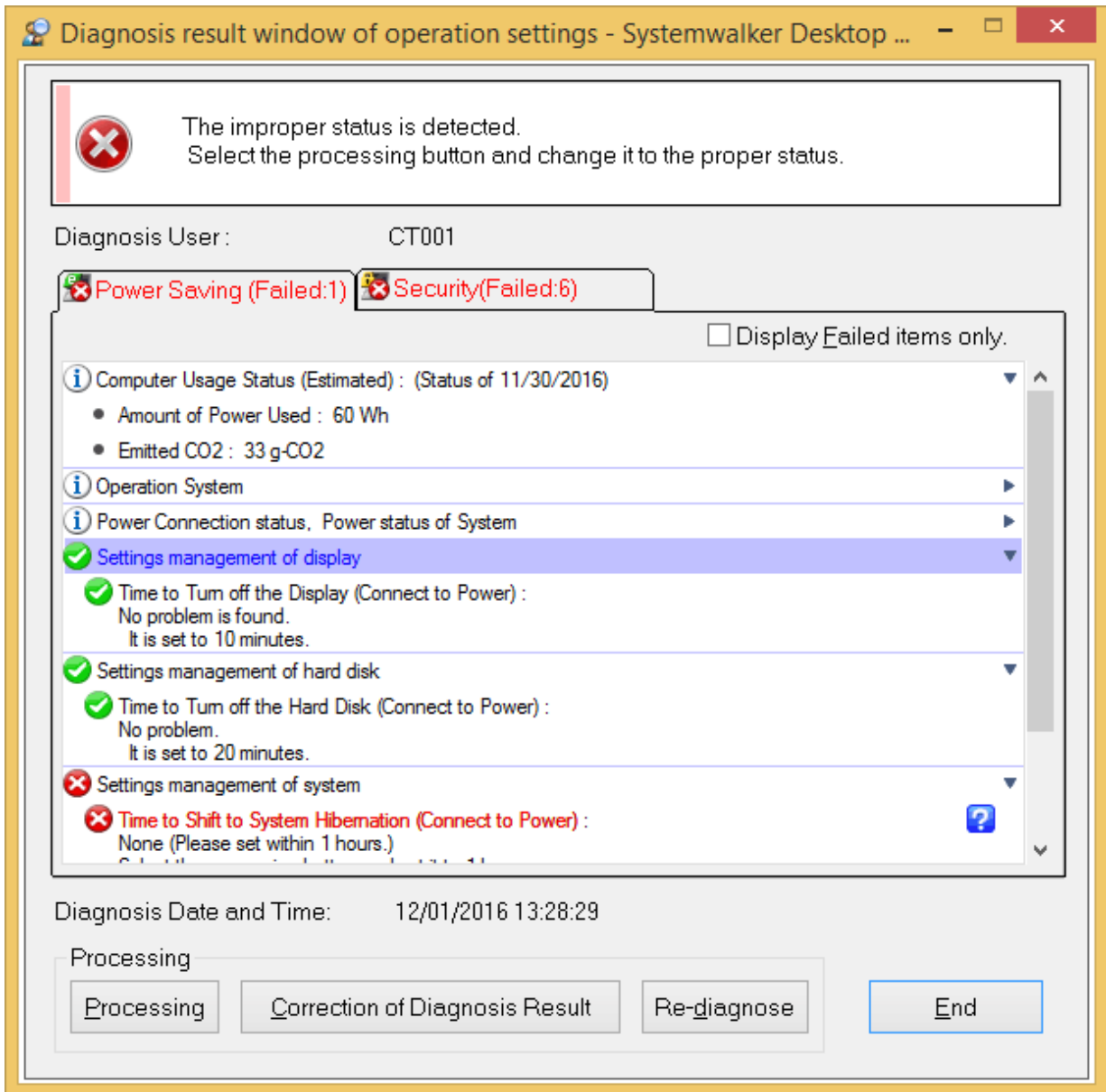
The auditing and control status of power saving and power consumption can be confirmed in the report.

- Power Saving Setting Status Report

- Power Consumption Auditing Report



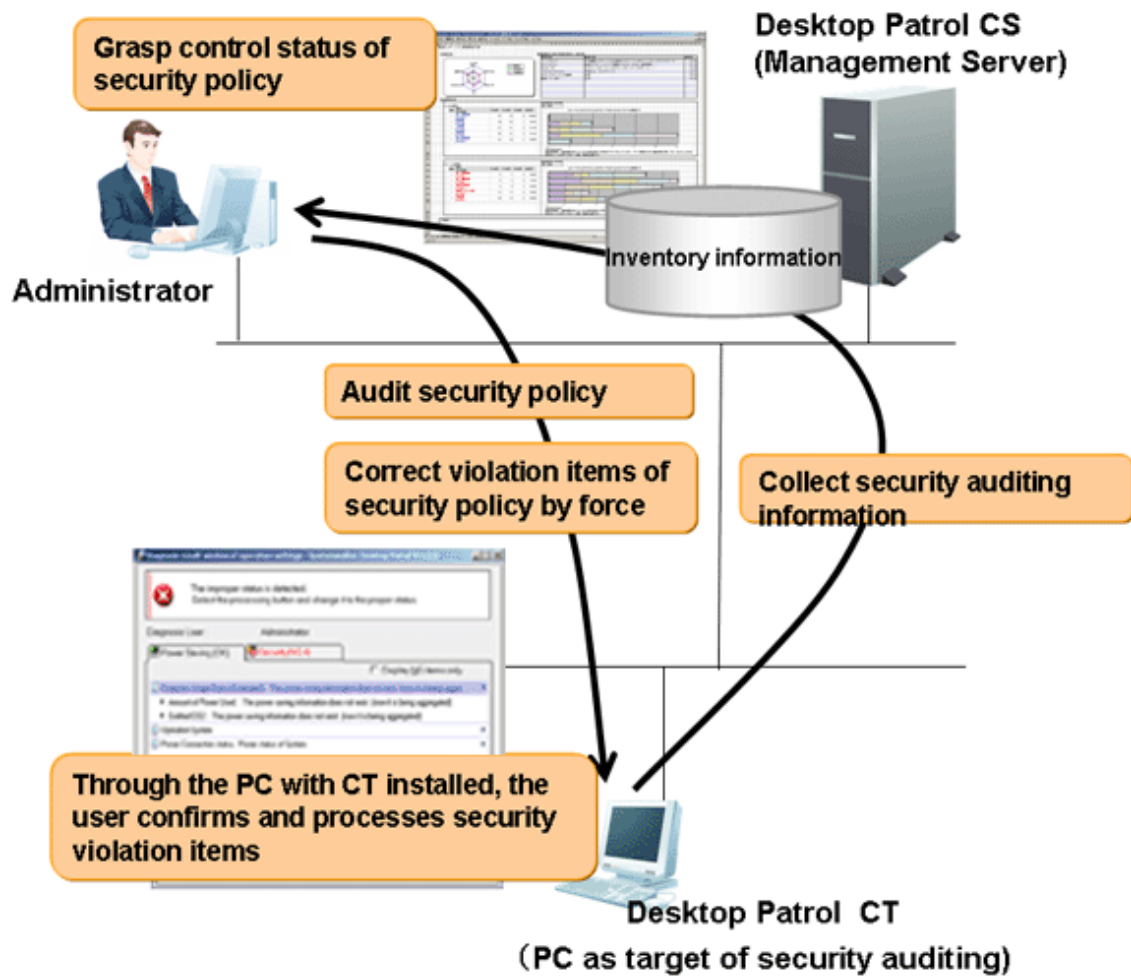
The diagnosis result window of power saving settings displayed at client is shown below.



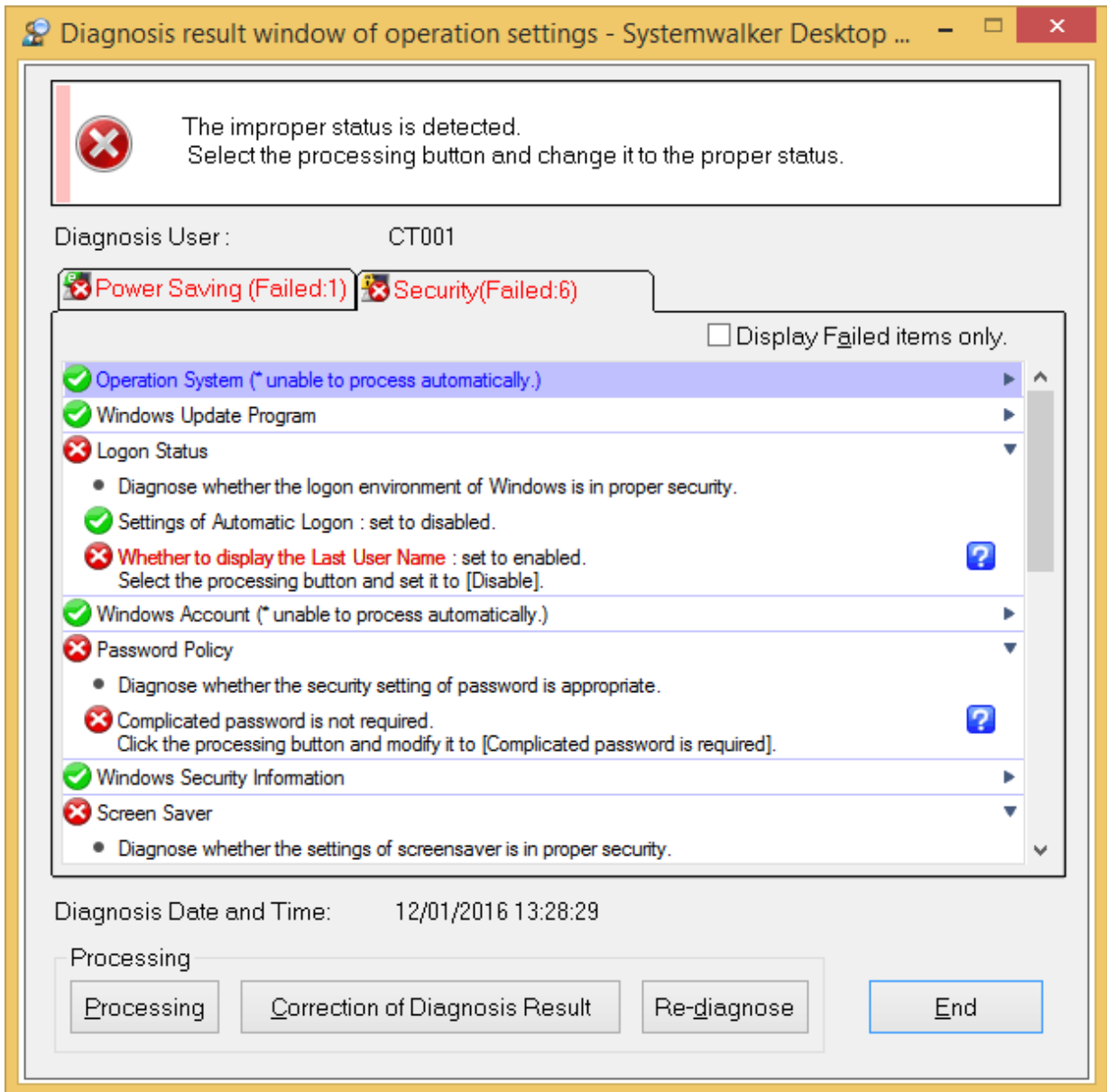
Auditing/control

The operation summary when performing security auditing/control is shown below.

The control status of security policy can be confirmed through security auditing report.



The diagnosis result window of security setting displayed in the client is shown below.



Newly added management ledger function

The following management can be performed through the information collected using Systemwalker Desktop Patrol or the information managed by ledger.

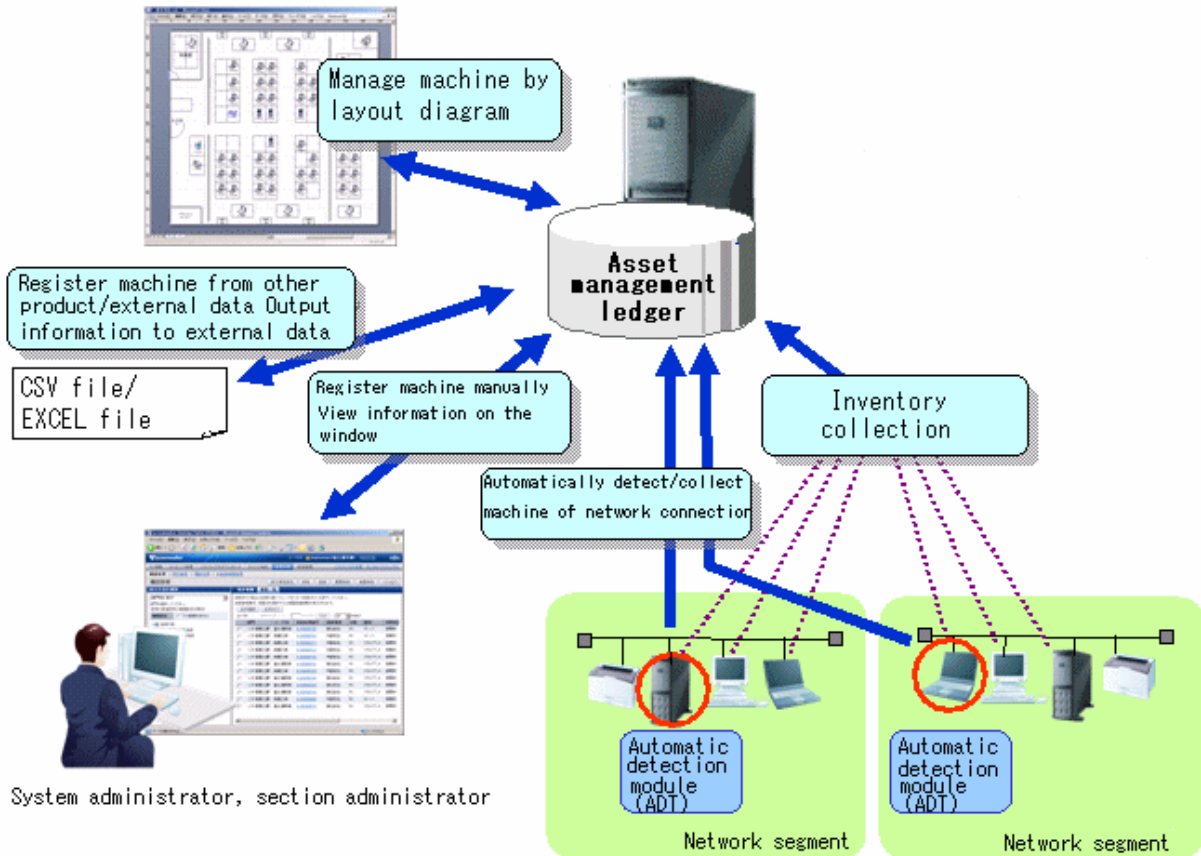
- Device Management Function
- Contract Management Function
- Stocktaking Support Function
- Report Output Function

Device management

For management target device, there are following operations through confirming and operating the asset status of asset status (PC and devices).

- Automatic detection of device information

- Confirmation of device information by section/type/location
- Registration/Modification/Deletion of device information
- Save ledger of device information
- Confirmation of modification history
- Device management through layout diagram
- Creation of assets management ledger from other product

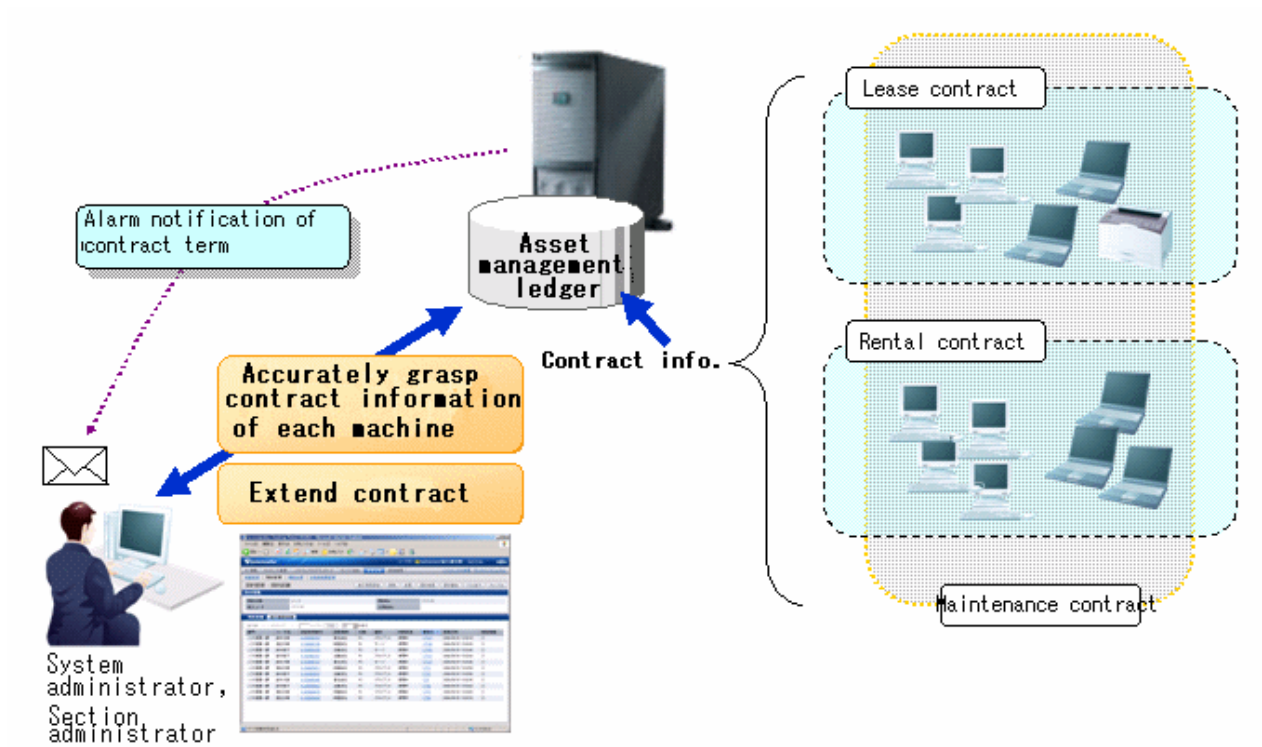


Contract management

There are following operations through the function of managing contract information of management target device.

- Confirmation of contract information by section/type
- Registration/Modification/Deletion of contract information
- Allocation of contract information
- Save ledger of contract information
- Extension of contract

- Alarm notification of contract term

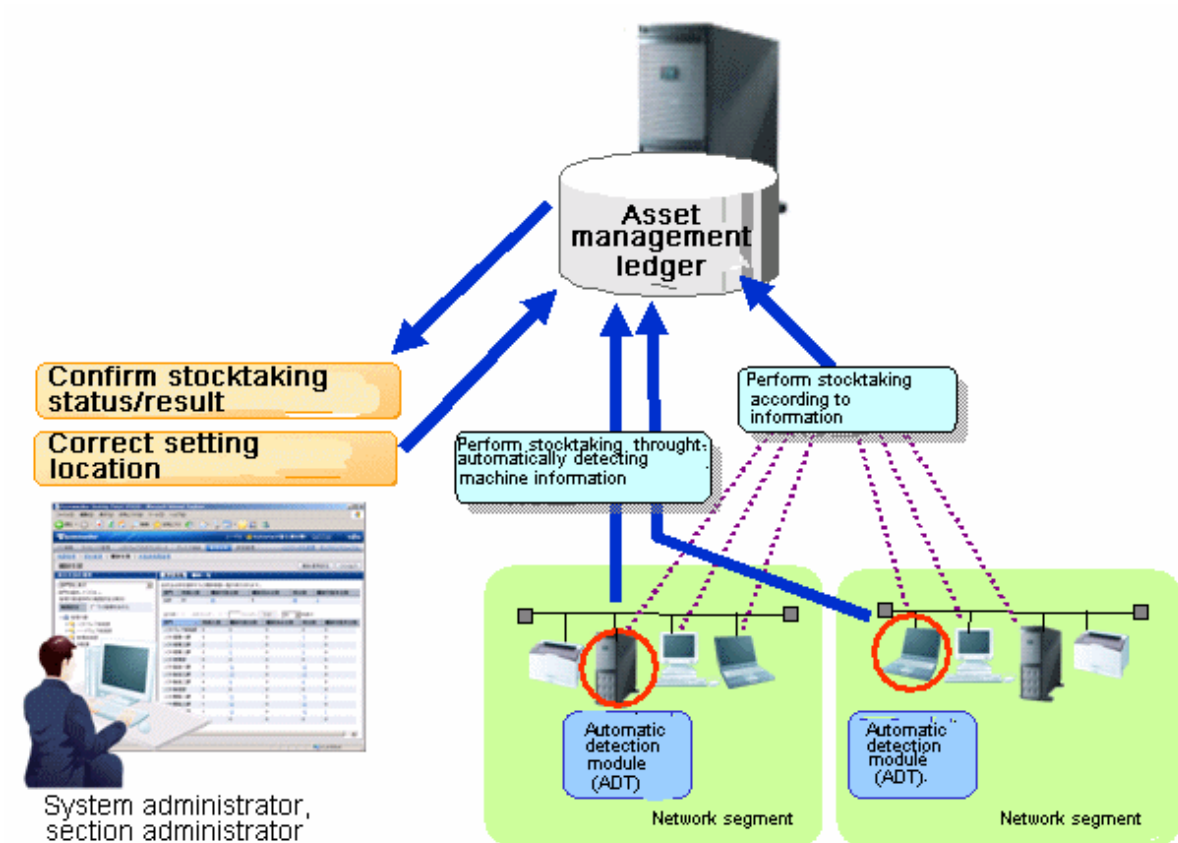


Stocktaking support

There are following operations in the function for supporting the stocktaking of management target device.

- Confirmation of stocktaking status by section/type/location
- Setting of whether stocktaking can be executed

- Save ledger of stocktaking status



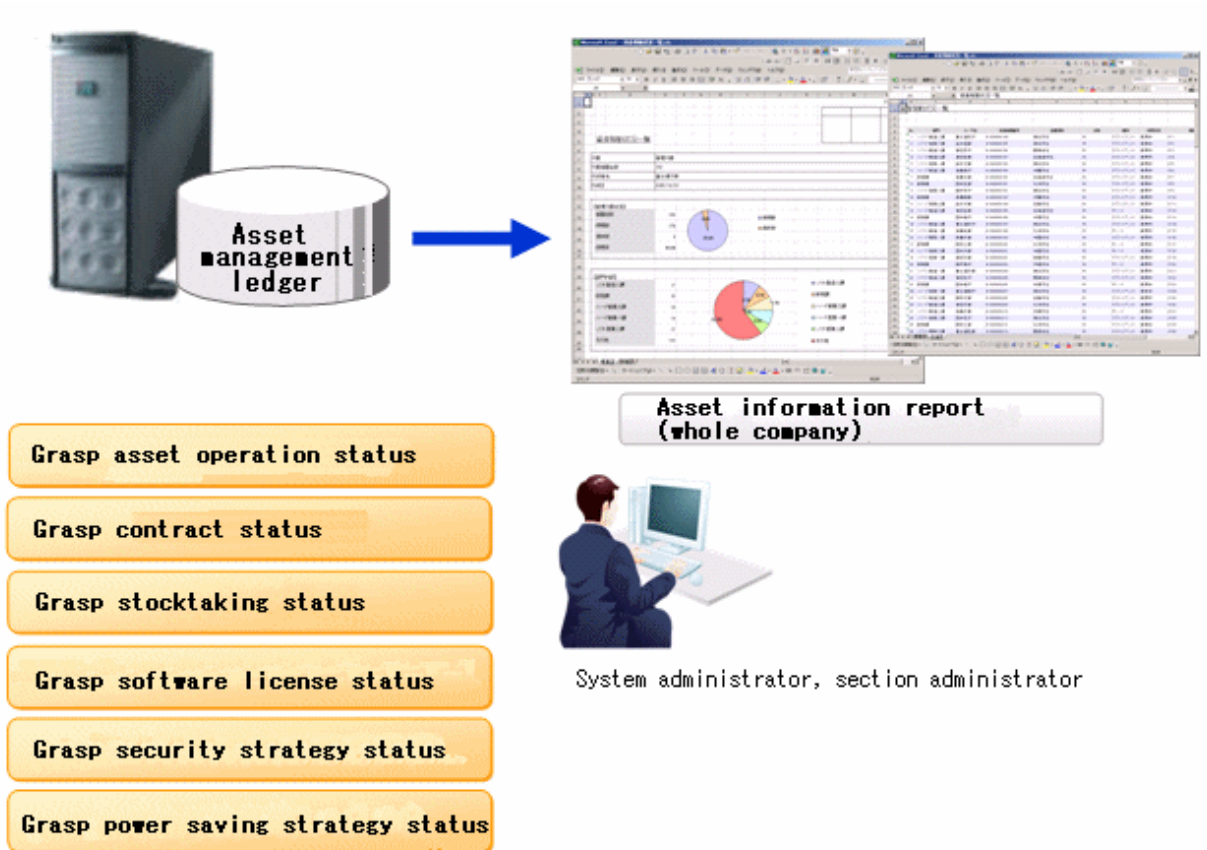
Report output

It is the function of outputting the asset information managed in Systemwalker Desktop Patrol as file or print in report format (Microsoft(R) Excel format). Graphs and tables can be output at the time of outputting report, so that the current status and problems can be known visually.

The following operations can be performed in the output of report format of asset information.

- Output file in report format

- Edit report layout

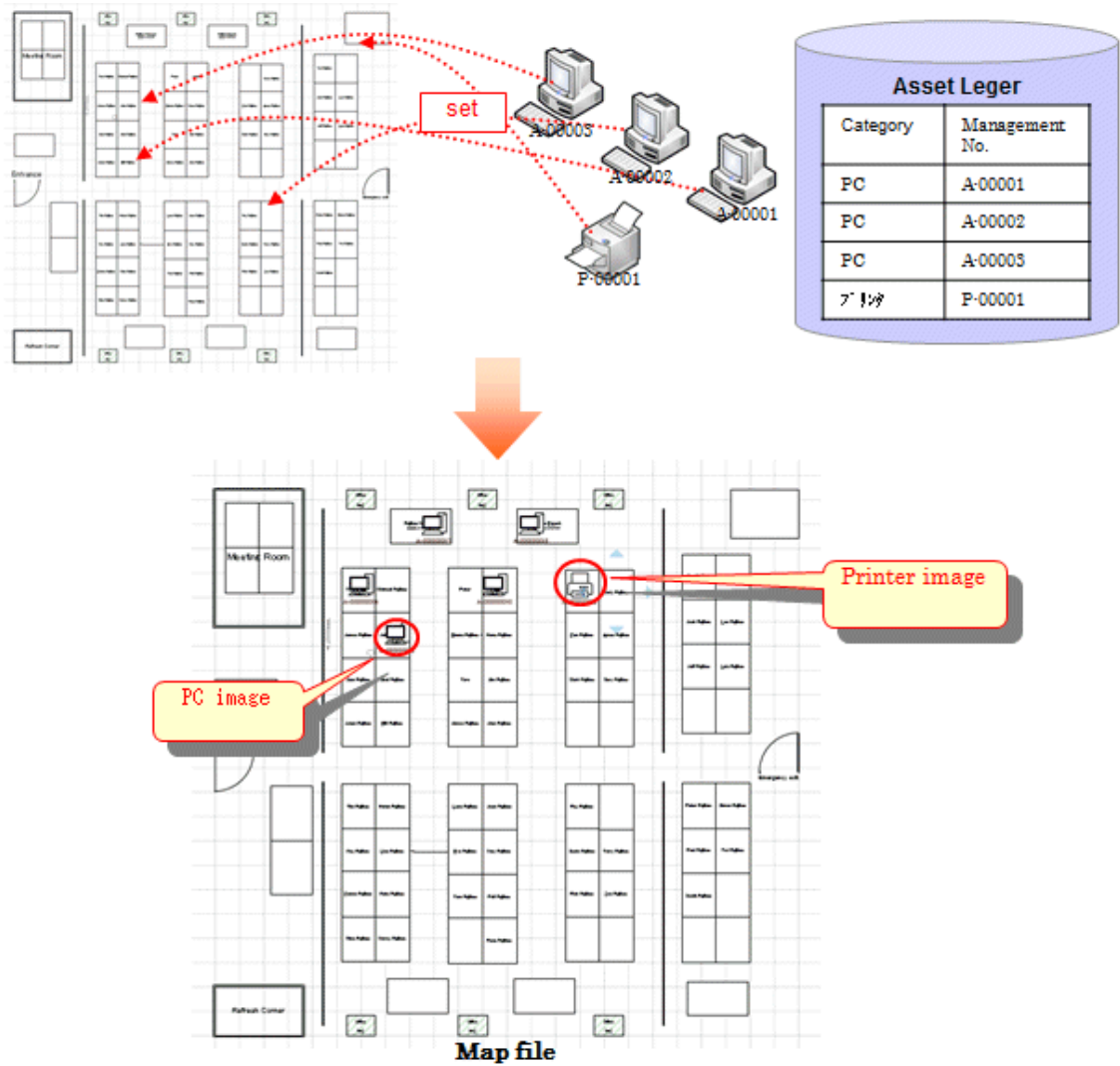


Device management by layout diagram

For the layout diagram that shows the floor image, it can be managed after confirming the managed device in asset ledger.

In the meantime of confirming the configuration of device visually, the asset information of device can be viewed.

When performing the device management based on the layout diagram, Microsoft(R) Visio(R) is required.



Support virtual desktop environment

To use and audit the virtual desktop, support the CT, main menu, and management ledger functions in the following ways.

CT

To install the CT on the virtual desktop,

- Support the link clone environment.
- Support connecting the remote desktop to the terminal server.
- Determine the CT running in the virtual PC, and reflect the power saving and security auditing results.

Main menu

To determine information about the virtual PC, add the following items:

- General PC list visible column(s) on the inventory information page
- Searched items that can be screened in the virtual environment when creating a policy group
- General PC list managed by the policy group
- Initial option **Domain Name** for starting the basic operation policy PC

Report output function

To determine information about the virtual PC, perform the following in the report:

- Set the auditing item **Hardware** in the security auditing report to **Not Auditing**.
- List the power saving status report to **Number of Unaudited PCs**.

Improvement of usability

The improvements of following usability have been performed.

Customization of displayed items of PC list

The items displayed in **PC List** of the **PC Information > Inventory Information** of "Desktop Patrol Main Menu". The modification of displayed item can be set all at once in the system.

Tree view of software list

The software list of the following window of "Desktop Patrol Main Menu" will be displayed in tree view.

- **PC Information > Software Auditing** window

Page supporting list view

The page supports the list view of displayed items in each window of "Desktop Patrol Main Menu".

When there are many displayed items, the number of items displayed in one page can be narrowed down for display.

Integration to Web GUI of MC window

The functions provided through Management Console before Systemwalker Desktop Patrol V13 has been integrated to Web GUI. The operation performed through MC window will no longer require window switch as before. Instead, everything can be operated through the Web window.

Display operation status and usage processing

As the Top window of the main menu, the "Status Window" that displays the operation status of Systemwalker Desktop Patrol in list has been added, based on which the following operations can be achieved.

- The overall status can be known in a short time.
- Since the status including Systemwalker Desktop Keeper will be displayed in the "Status Window" Top window in the system with Systemwalker Desktop Keeper V14.2.0 installed, the status can be known without switching the product window.
- According to the displayed results on the main menu status window, operations such as check and browse the faulty PC are extension to use processing is possible.

The following items can be added:

- Message Sending
- Inventory Collection
- Security Patch Installation
- Security Settings Modification
- Power Saving Settings Modification

Other improved functions

The following functions have been improved/enhanced.

Operation log collection

Systemwalker Desktop Patrol saves users' operations as logs in PCs which are running the CT, and adds a function for collecting such log files.

By confirming the operation log file, the following effects can be implemented.

- Forbid information disclosure
- Operation trace when a fault occurs in the PC

Improve distribution function

- Multiple files can be sent to different PCs through the distribution settings of the CS. Besides, the "File Distribution" function for confirming the distribution result in the CS is provided.
- Specify "Time Segment" in the "Distribute Software" function.
Then, you can distribute software in the specified time segment.
- In order to distribute software more easily to a particular PC, apart from the existing distribution target, the PC group for distribution has been added.
 - PC group for distribution
It is the group for distributing software. Any PC can be registered to the PC group for distribution.
In addition, one PC can also be registered to multiple groups for distribution.
 - Policy group
It is the group for performing operation setting of client. Even policy group, can be specified as the distribution target of software.
 - CS/DS
It is the physical server, which is specified when it is expected to distribute software to PC under CS/DS only.

CT operation status check command

The command that can display the CT operation status in the window has been added.

Based on this, whether CT runs according to the settings of policy set in CT can be confirmed through CS and the window on correspondent CT/

Enhance auditing items of security settings

The auditing items of security settings have been added and modified.

- Settings that require complex password <Add>
Whether the complex password has been specified can be audited.
- The auditing method of Guest account <Modify>
As the auditing method of Guest account, it is allowed to check the enabling/disabling of account only without checking the password.
In addition, the auditing result can be confirmed through the main menu and report.

Browse PC information

The following operations can be performed in the system which is running Systemwalker Desktop Keeper V14.2.0.

- The Systemwalker Desktop Keeper log retrieval page can be invoked by one click on the PC information page of Systemwalker Desktop Patrol.
Therefore, you can trace the operation that is performed on the faulty PC according to the operation logs managed by Systemwalker Desktop Keeper.
- You can also browse the inventory information on the log retrieval page of Systemwalker Desktop Keeper by clicking.
Therefore, the security status of a PC whose files are exported through USB can be easily obtained.

Allowed character expanded for user ID

The underscore "_" can be used as a character for the user ID.

Improve search function

The function modifies from exact retrieval to fuzzy retrieval.

Improve input area for MAC address

The MAC address input area modifies from an 8-bit unit to one input box.

Collect inventory collected through other products

When you run InvSend.exe to import inventory information based on Systemwalker Centric Manager or CSV, the Collection Date/Time will be updated.

Therefore, you can confirm the time when the inventory information is imported by viewing the Collection Date/Time.

1.3.4 Added and Modified Functions in V13.2.0

This section describes the added and modified functions in Systemwalker Desktop Patrol V13.2.0

Active Directory Linkage Function

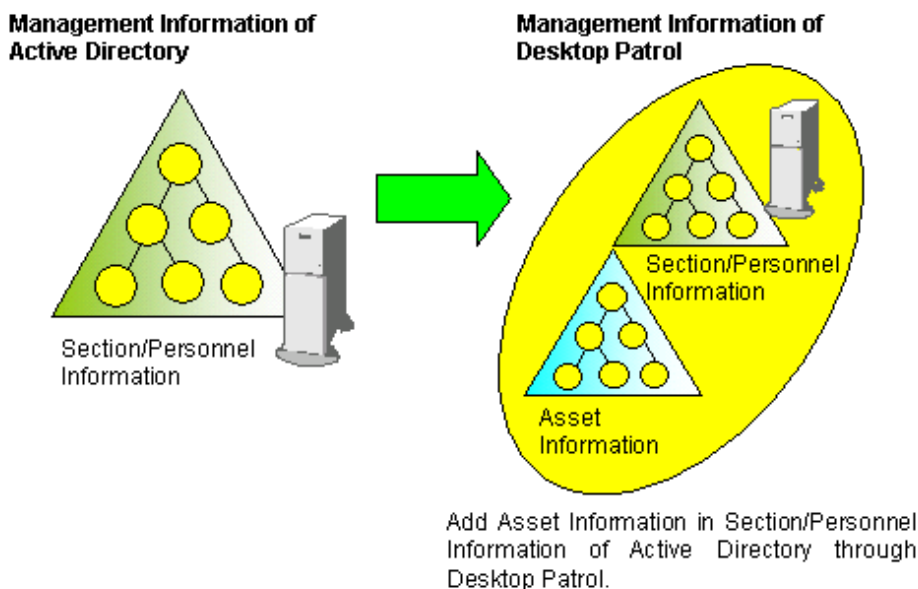
Active Directory is a directory service that manages various resources (PC and printers, user information etc.) on the network more effectively.

Through Active Directory Linkage, Related asset information in the section and personnel information managed by the Active Directory can be managed by Desktop Patrol. Also, since the master data of Desktop Patrol can be generated automatically according to the section and personnel information managed by the Active Directory, the master data of Desktop Patrol can be created without relying on previous procedures, and the information can be managed collectively.

In addition, previous applications that are not linked to the Active Directory may be used together, so you can freely choose the sections that are linked or not linked to the Active Director according to the applications, and deal with the user business flexibly.

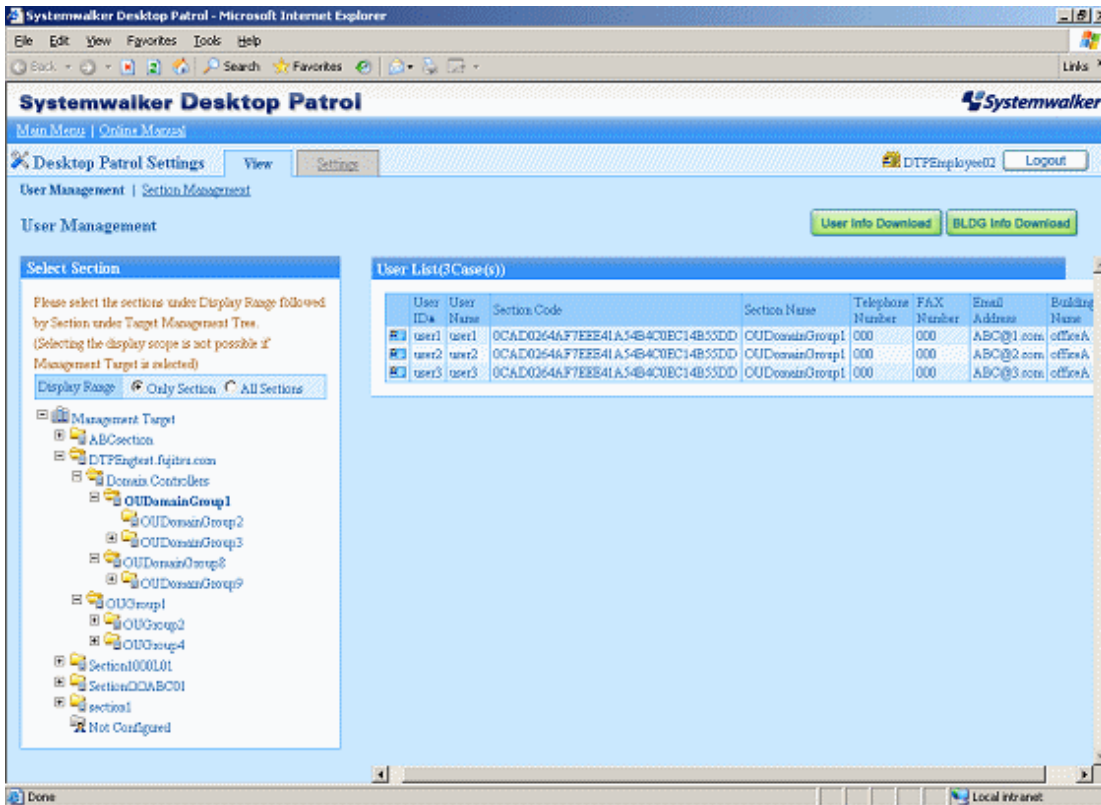
Moreover, the linkage with Active Directory is limited to the circumstances when performing single domain applications. When performing multiple domain applications, it cannot be linked to Desktop Patrol.

An overview of Active Directory linkage functions is shown below.



An example of "Desktop Patrol Main Menu" when linking with the Active Directory is shown below.

The section information obtained through the Active Directory is displayed as the domain name under the section tree of the top level section.



PC Operation Management

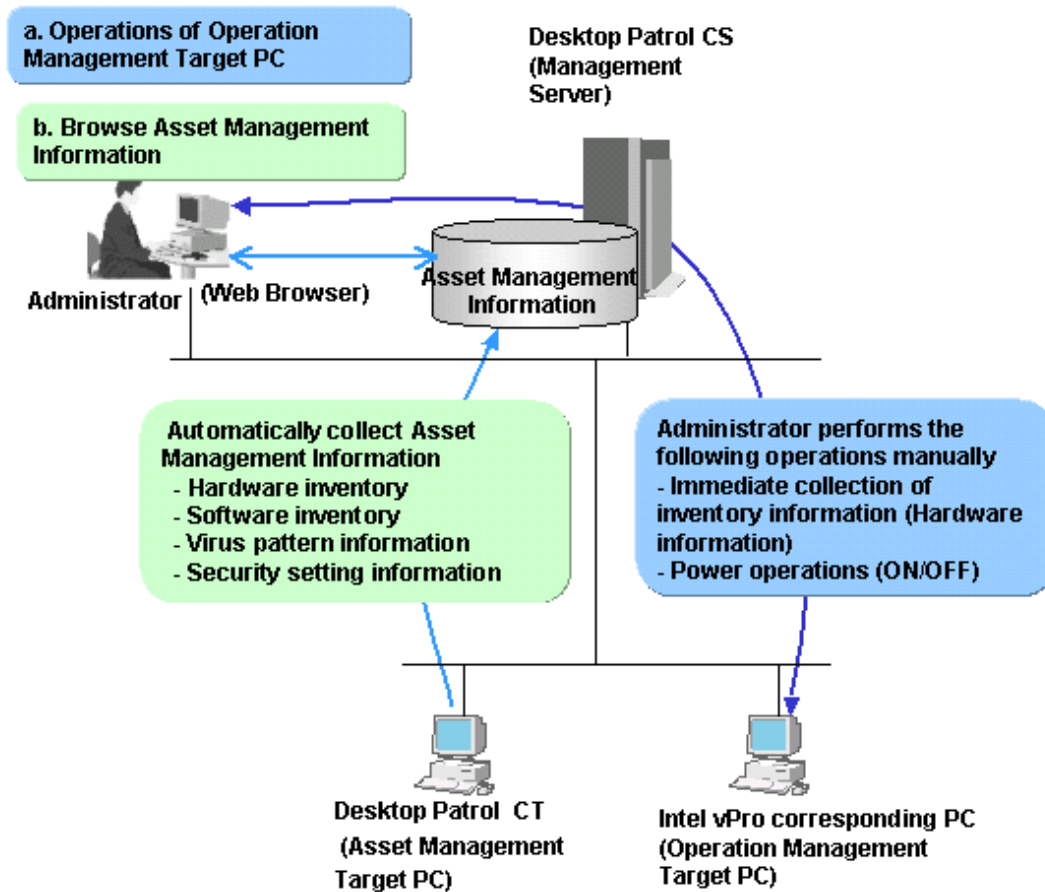
PC Operation Management is a function that can perform remote control on a PC even if its power is OFF, using Intel(R) AMT (Active Management Technology), which is one of the technologies contained in Intel(R) vPro(TM) and Intel(R) Centrino(R) Pro.

PC Operation Management has the following functions.

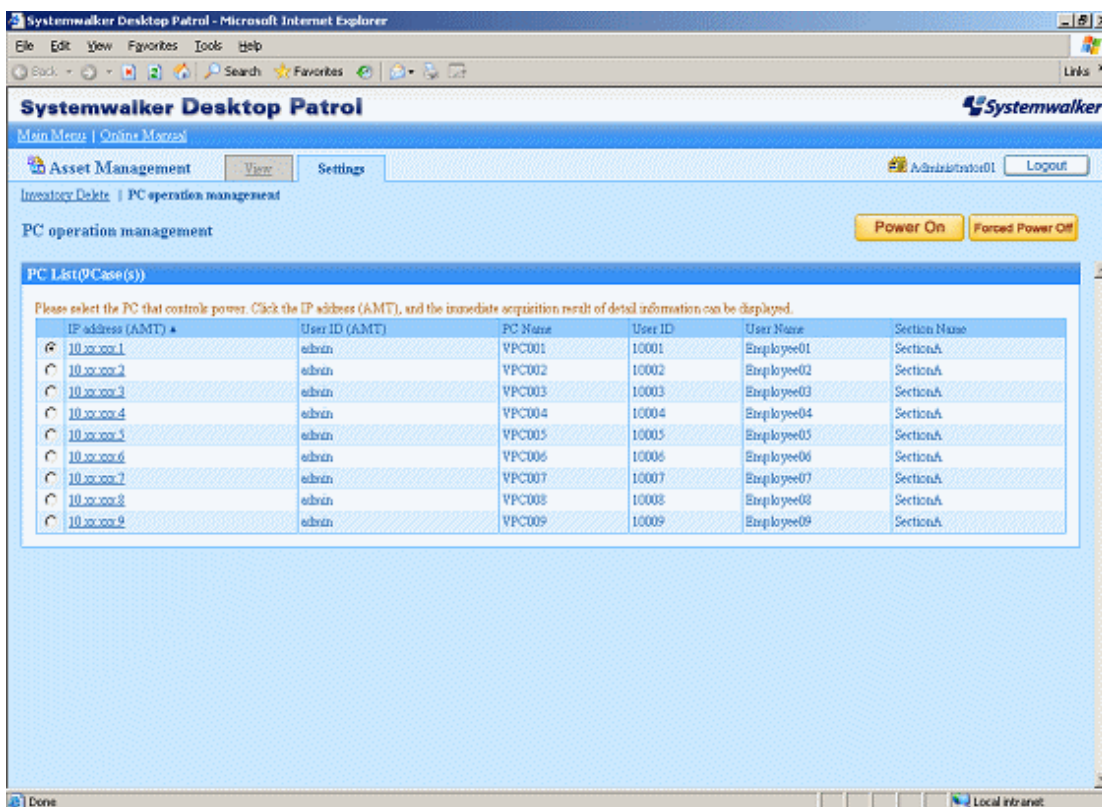
- Real-time collection of Inventory information (hardware information) (Notes)
- Power operations (ON, OFF)

Notes) Since the inventory information that Can be collected by this function is the information collected using Intel(R) AMT, the collected content is different from the information that can be viewed in **Asset Management > Inventory Information** of "Desktop Patrol Main Menu".

An overview of the PC Operation Management Function is shown below.



The PC Operation Management Function is operated through the following window of "Systemwalker Desktop Patrol Main Menu".



CT operation status log

When the Systemwalker Desktop Patrol CT with continuing status of not applying security patches exists in "Systemwalker Desktop Patrol Main Menu", the administrator must confirm the operation status of CT from users.

In order to relieve the burdens on the administrator, the operation status of CT can be managed in Systemwalker Desktop Patrol CS as a log. The administrator can confirm the following operation status of Systemwalker Desktop Patrol CT according to operation status logs.

- Operation records of Systemwalker Desktop Patrol
 - Start/Stop of Systemwalker Desktop Patrol services
 - Policy receiving
 - Inventory collection
 - Patches installation
 - Contents download
 - Updater application
- Operation records of Windows
 - Windows logon/logoff
 - Windows suspend status / suspend recovery
 - Using Battery / Using AC
 - LAN connection enabled / disabled

The administrator can confirm the operation status by analyzing the operation status log without confirming the status with CT users.

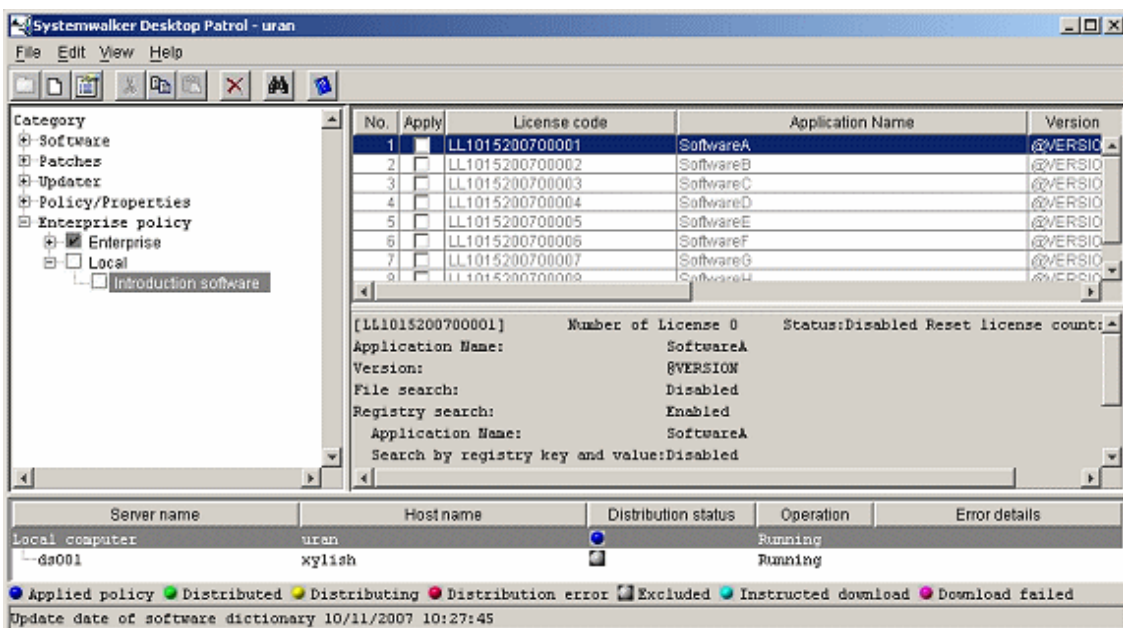
Function of user asset software dictionary creation

When the software products to be managed are not defined in "Enterprise" of the software dictionary, definition should be added in "Local" of the software dictionary.

User asset software dictionary creation is a function that simply defines "Local" of the software dictionary through the "Addition/Deletion Information of Programs" that is collected as Inventory information.

Since the software products installed in each PC can be easily considered as license management target, the IT asset can be used effectively and shortfall of the software license can be grasped.

An example of user asset software dictionary definition is shown below.



SMTP verification for sending emails

When sending emails using the "Warning Notification Function" or using the "Email Sending Function of Command Mode CT, SMTP verification is required.

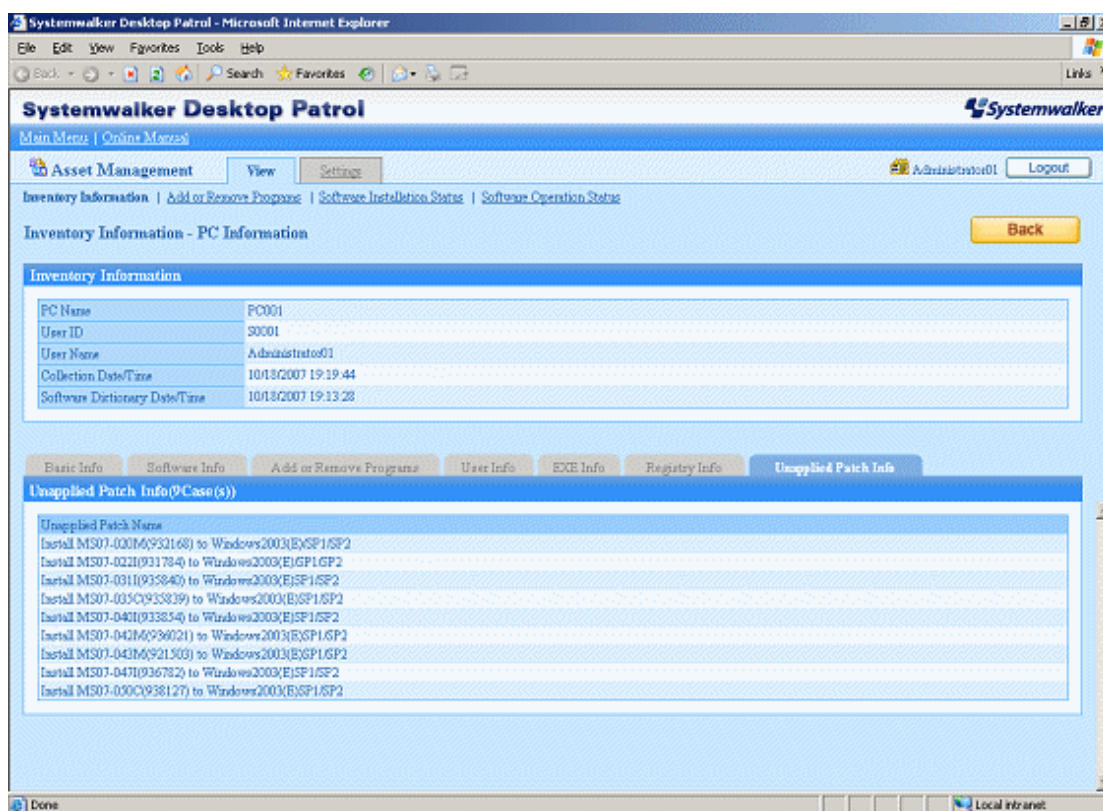
The following methods of verification can be selected.

- CRAM-MD5
- LOGIN verification
- PLAIN verification
- Automatic judgment

Viewing unapplied patches information

Unapplied Patches Information can be viewed in the "Asset Management" window of "Systemwalker Desktop Patrol Main Menu".

Information of patches that are considered as automatic installation targets, which are not applied on Systemwalker Desktop Patrol CT can be viewed.



1.3.5 Added and Modified Functions in V13.0.0

This section describes the added and modified functions in Systemwalker Desktop Patrol V13.0.0

New Web GUI

The following improvements in the "Web Tools" when using PC information reference and license management have been made with regard to older versions (prior to Systemwalker Desktop Patrol V11.0L10).

- Improved security by displaying setting/reference window corresponding to operation privilege.
- Added a new log-out function in each window after login.
- Improved operation windows of function units in according with user purpose.

Operation privileges refer to "System Account", "Section Management Account (setting/reference)", and "User Account".

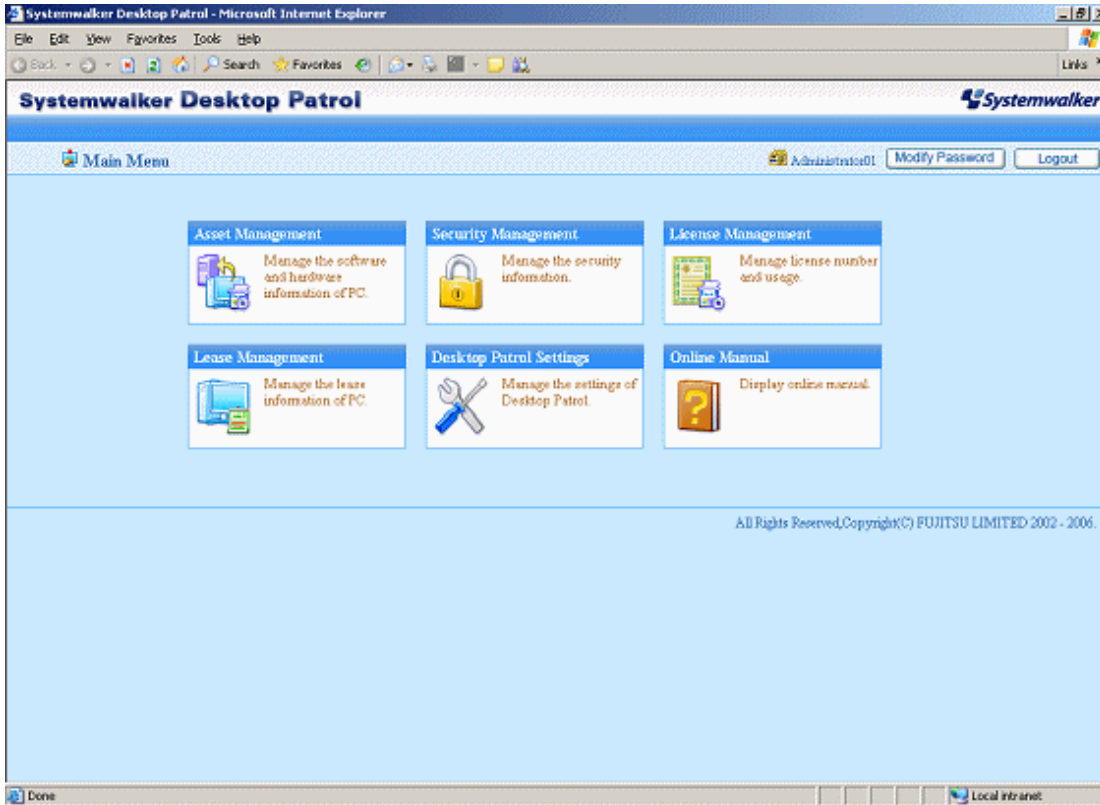
In the new Web GUI, both "Systemwalker Desktop Patrol Main Menu", which is necessary to log in, and "Systemwalker Desktop Patrol Download Menu", which is unnecessary are included.

Also, following two initial menus are included in "Systemwalker Desktop Patrol Main Menu" according to different operation privileges.

- "Systemwalker Desktop Patrol Main Menu" (setting and reference privileges)
- "Systemwalker Desktop Patrol Main Menu" (only reference privilege of own PC)

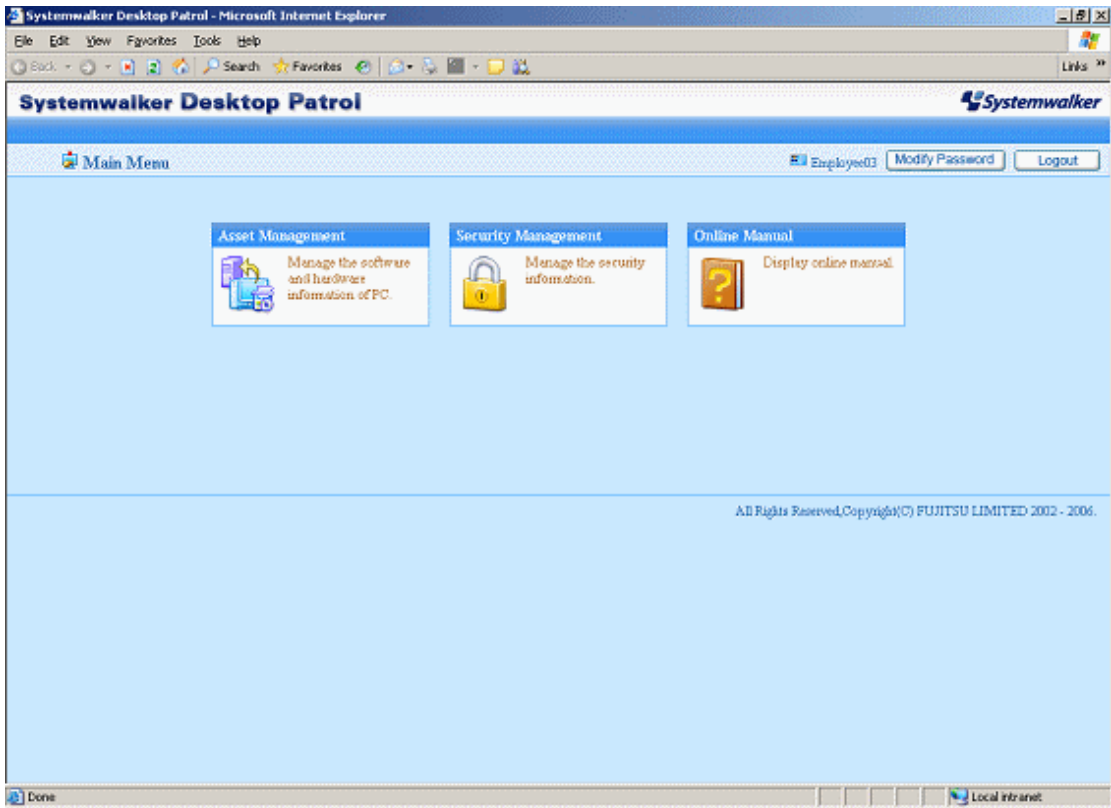
Systemwalker Desktop Patrol Main Menu (setting and reference privileges)

The Systemwalker Desktop Patrol Main Menu (setting and reference privileges) is displayed when logged on with the user IDs of system account or section management account.



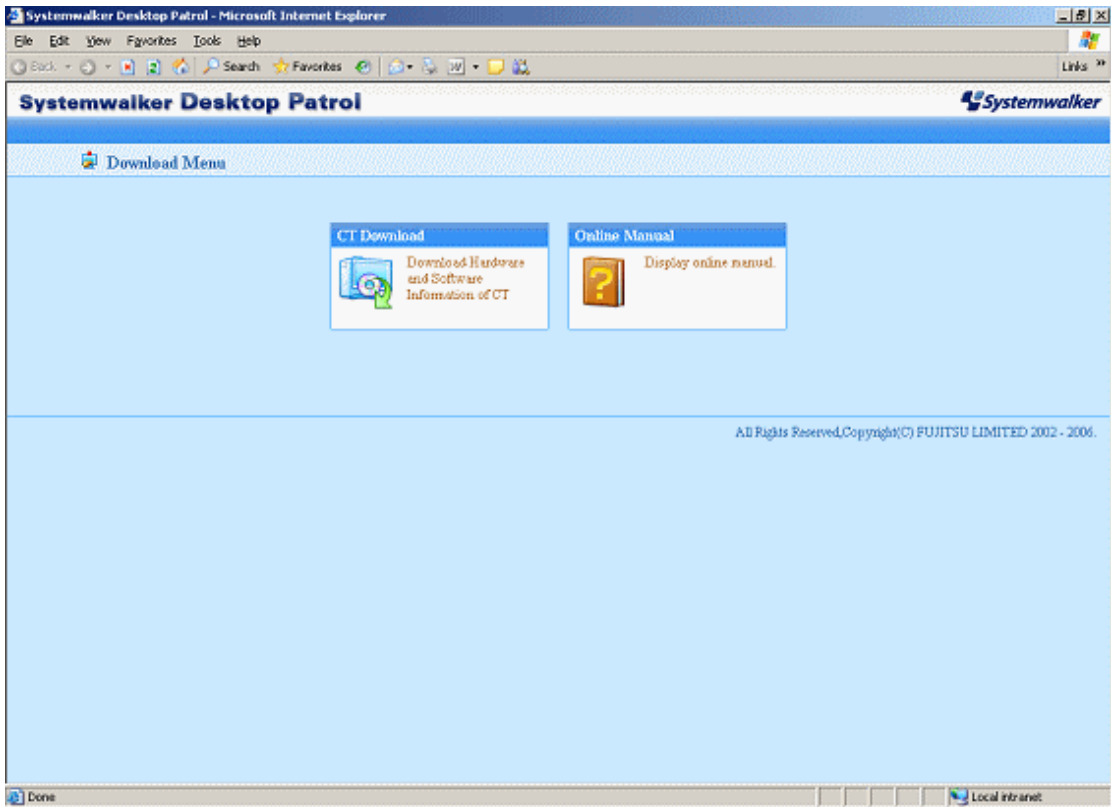
Systemwalker Desktop Patrol Main Menu (only reference privilege of own PC)

This is displayed when logged on with the user ID of a user account.



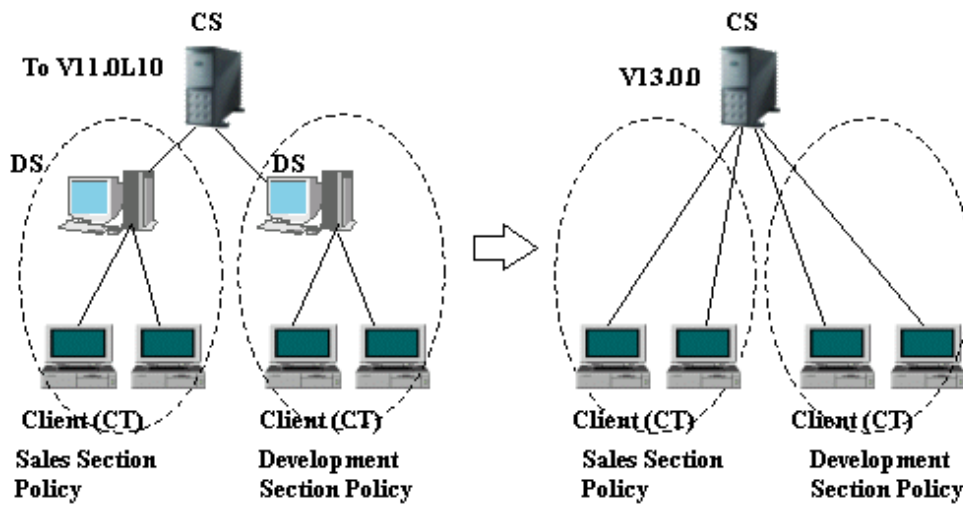
Systemwalker Desktop Patrol Download Menu.

The download window without login appears.



Function of policy group

Policy Group function is a function that is set as the operation policy of Client in every logical group, including installation schedule of Security patches, application operation, Inventory collection schedule and conditions of Contents to be distributed.



The meanings of symbols in the above picture are as follows:

- CS: Systemwalker Desktop Patrol CS
- DS: Systemwalker Desktop Patrol DS
- CT: Systemwalker Desktop Patrol CT

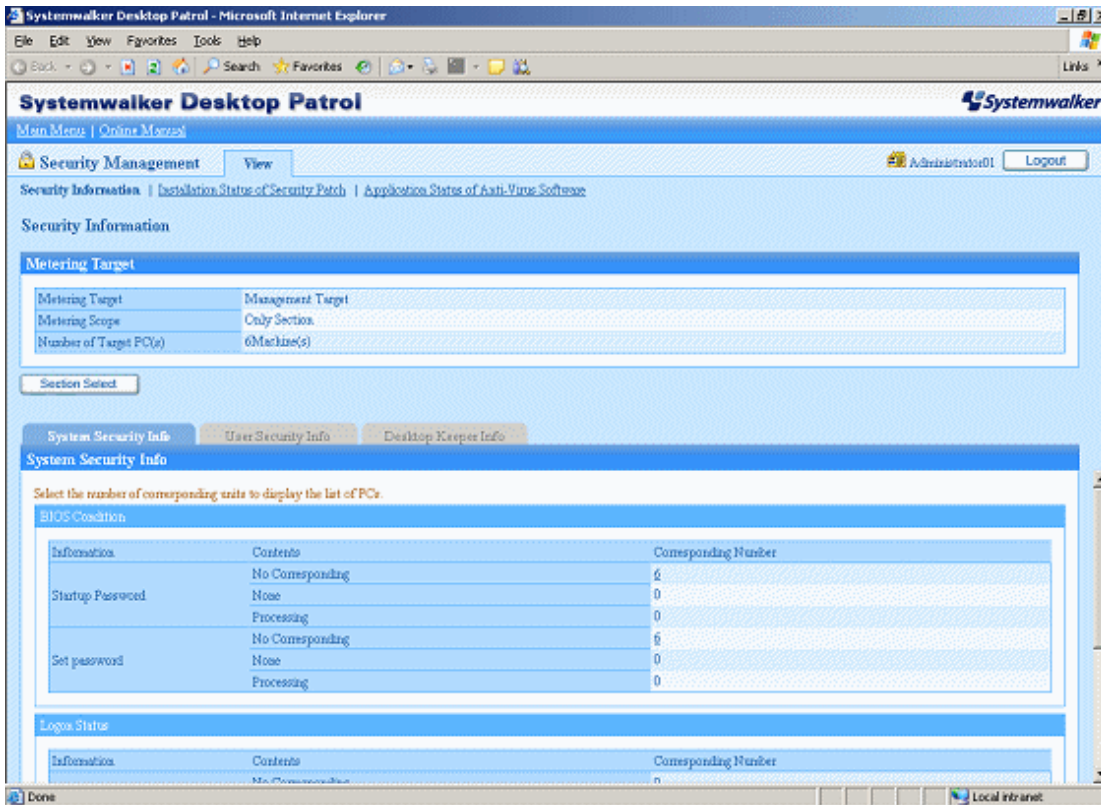
Although multiple Domain Servers are built in each site to change operation policy at all times, the PC belongs to a logical Group, and so such Domain Servers are unnecessary.

Security audit function

The following Security audit functions are offered as policies of each threat correlated to PC Security.

- Security audit for the system
- Security audit for the user
- Audit for security policy software (Systemwalker Desktop series)

A PC with a problem can be quickly inspected by referring to security audit information in the Security Management window.



Security audit for the system

The following information can be inspected:

- Whether the BIOS password has been set or not.
- Status about Windows login (whether automatic login is set or not)

Security audit for user

The following information can be inspected:

- Status of the Screensaver setting
- The setting status in the Security area of Internet Explorer

Audit for security policy software (Systemwalker Desktop series)

The following information can be inspected:

- The setting status of various determent functions provided by Systemwalker Desktop Keeper

Strengthen link with Desktop series

Integrated security policy functionality is offered by linking with various products in the Systemwalker Desktop V13 series.

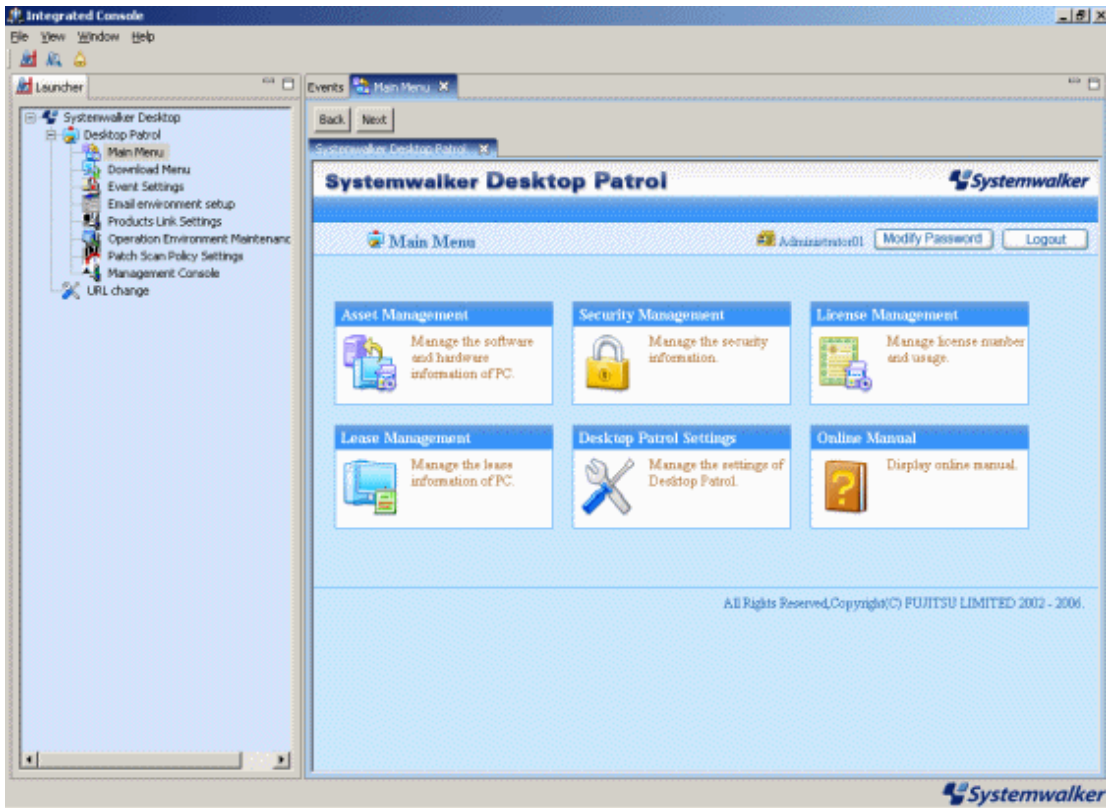
Integrated Console Window

The management windows of Systemwalker Desktop Patrol and other Systemwalker Desktop series can be displayed and started in integrated view by "Systemwalker Desktop Integrated Console".

Also, in order to use "Systemwalker Desktop Integrated Console", you must have the privilege of the Administrators Group of the PC with Integrated Console installed.

"Systemwalker Desktop Integrated Console" window is displayed as follows:

The menu function that can be operated in the startup window varies with different installed environments of integrated Console.



Desktop Keeper Link

The security setting status of Systemwalker Desktop Keeper in Client can be inspected.

Client suppression function

Client suppression function is a function that suppresses clients to perform the following operations on PCs with Systemwalker Desktop Patrol CT installed for enhancing security management through Systemwalker Desktop Patrol.

- Stop services of CT.
- Uninstall CT.
- Change the connected server of CT.

Suppress to stop services of CT

Suppress the client to stop the "ITBudgetMGR (INV)" service of Systemwalker Desktop Patrol CT.

Suppress to uninstall CT

If the client wishes to uninstall Systemwalker Desktop Patrol CT, a password would be required to input for suppressing uninstallation.

Suppress to change the connected Server of CT

Suppress the clients to change **Connected Server** through the environment setting window of Systemwalker Desktop Patrol CT.

For details on client suppression function, refer to *Operation Guide: for Administrators*.

Chapter 2 List of Incompatible Items

This section describes the incompatible items when upgrading Systemwalker Desktop Patrol.

2.1 Upgrade from V11.0L10

Incompatible items when upgrading from Systemwalker Desktop Patrol V11.0L10 are as follows.

Besides, this item describes the incompatibilities when upgrading from V11.0L10 to V13.0.0. When upgrading to this version, the following incompatible items should be confirmed after confirm this item.

- [2.2 Upgrade from V13.0.0](#)
- [2.3 Upgrade from V13.2.0](#)
- [2.4 Upgrade from V13.3.0](#)
- [2.5 Upgrade from V14.2.0](#)
- [2.6 Upgrade from V15.1.0](#)
- [2.7 Upgrade from V15.1.1](#)

2.1.1 Incompatible Operating Environment

This section describes the incompatible operating environment.

Supported OS

The following OS are not supported.

- Corporate Server (CS)
 - Microsoft(R) Windows NT(R) Server 4.0
- Domain Server (DS)
 - Microsoft(R) Windows NT(R) Server 4.0
 - Microsoft(R) Windows NT(R) Workstation 4.0
 - Microsoft(R) Windows(R) 2000 Professional
- Management Console (MC)
 - Microsoft(R) Windows NT(R) Server 4.0
 - Microsoft(R) Windows NT(R) Workstation 4.0
- Client (CT)
 - Microsoft(R) Windows(R) 95
- Remote Operation
 - Microsoft(R) Windows NT(R) Server 4.0
 - Microsoft(R) Windows(R) 98
 - Microsoft(R) Windows(R) Me

Prerequisite products

DBMS products are not required. (Oracle, SQL Server)

(The DBMS function is built into Desktop Patrol)

Linked products

It cannot link with the following products.

- ATTACHMATE NetWizard 4.1/j (Windows NT Version)

2.1.2 Function Incompatibility

This section describes incompatibilities of functions.

Master construction

- Modify the file structure of Master information.

V11.0L10	V13.0.0 or Later
<ul style="list-style-type: none">- Employee Master- Employee Password Master- Email Information Master- Affiliation Master	<ul style="list-style-type: none">- User management information
<ul style="list-style-type: none">- Section Master	<ul style="list-style-type: none">- Section management information
<ul style="list-style-type: none">- Building Master	<ul style="list-style-type: none">- Building Management Information

Remarks: This contains shift command "dtpmstcv.exe (Master Data CSV shift)".

For details, refer to the *Reference Manual*.

- Modify the available characters of Master information such as "User name", "Section name", "Building name".

V11.0L10	V13.0.0 or Later
<p>The following characters can be used:</p> <ul style="list-style-type: none">- alphanumeric characters	<p>The following characters can be used for "User name" and "Section name".</p> <ul style="list-style-type: none">- multi-byte characters- alphanumeric characters- symbols("-", "@", ".", "(", ")", "[", "]", "{", "}", "<", ">", ":", ";") <p>The following characters can be used for "Building name":</p> <ul style="list-style-type: none">- alphanumeric characters- symbols("-", "@", ".", "(", ")", "[", "]", "{", "}", "<", ">", ":", ";")

- In V13.0.0 or later, you can enter Section Master through Section Management Account.

Meanwhile, the operation window of each PC unit provided in V11.0L10 will be closed.

Desktop Patrol Main Menu (Web Tools in old version)

Operation authority

For security to be strengthened, setting and viewing range will be clarified according to the authority of operators. Accordingly, the operation restrictions and specification of Web integrated menu of V11.0L10 will be modified.

- View Inventory information

V11.0L10	V13.0.0 or Later
It is unnecessary to refer to all PCs information by authority (time limited only in sectors)	Only refer to own PC in client's privilege. You can only refer to your own section with section administrator's privilege.

- Set and modify lease contract information

V11.0L10	V13.0.0 or Later
It is unnecessary to update lease information of all PCs by authority. (time limited only in sectors)	Only system administrator/ section administrator can be set and updated * Setting and updating of lease information are independent as the Lease Management Function.

- Abolish section display restriction command and ID for viewing fault PC

As the system management account, section management account and user account support operation restrictions, the following commands are unnecessary.

- dtp_chconf.exe (section display restrictions)
- dtp_chconf.exe (set ID for viewing fault PC)

*Besides, since viewing can be performed often by creating the folder "Not Configured" for saving fault PC in section tree, ID created and used for viewing fault PC previously is unnecessary.

Function of updating software information

The function of updating software is unnecessary.

By using this function, unnecessary software (software for deleting company policy setting in the MC window, etc.) displayed on Web can be prevented, but due to function improvement, unnecessary information will be deleted from the database automatically, so this function is unnecessary.

Contents of EXE information

File information displayed in EXE information of Inventory information will be modified as only the main items displayed.

In V13.0.0 or later, only the following items are displayed.

V11.0L10	V13.0.0 or Later
File update date/time	Update Date/Time
File size	File Size
Organization	-
Description	Description
Version	Version
Internal name	-
Legal copyright	Copyright
Product name	-
Product version	-
Original filename	-
Remarks	-
Legal trademarks	-
Private build	-
Special build	-

V11.0L10	V13.0.0 or Later
Language	-

Display sequence of section tree

In V11.0L10, the section tree is displayed according to section code in ascending order. However, section code is not displayed in the displayed window of section tree, which makes the displayed content difficult to understand.

In V13.0.0 or later, the section tree is displayed according to the section name in ascending order. After sequencing the displayed content, it will be easier to understand and distinguish than the section tree.

Operations of not configured PC (fault PC)

In V11.0L10, by operating in the unit of one PC, not configured PC (fault PC) can be moved to the section or deleted through "Web Unified Menu" in the old window,

No correspondent operation in V13.0.0 or later, in the view of strengthening security, method for considering the not configured PC is modified as follows.

Take all PC of the unknown user which does not belong to the section as not configured PC, in case the owner has not been registered through **Setting Management** > **Users** of the new Web GUI (main menu) correctly, the following operation cannot be performed.

- Section Management Account user viewing/setting (Inventory deletion, subordinate group policy) through section

CASE managed as not configured PC contains the following contents. For how to register the owner of the not configured PC, refer to the related records in "Inventory Information of Not Configured PC" of "Assets Management" of *Operation Guide: for Administrators*.

- When Inventory is notified by PC before Master Data is registered in Systemwalker Desktop Patrol CS
- When PC owner as user management information has been registered in Systemwalker Desktop Patrol CS but the correspondent owner Subordinate section management information has not been registered
- When errors occurred in the settings in the user ID specified by the user of Systemwalker Desktop Patrol CT

User information in the Environment Setup window

In the user information of the **Environment Setup** window, characters allowed are as follows:

V11.0L10	V13.0.0 or Later
alphanumeric characters	alphanumeric characters symbols such as "-", "@", ".", "(", ")", "[", "]", "{", "}", "<", ">", ":", ";", "/"

The **Environment Setup** window is displayed through the following operation.

- When newly installing Systemwalker Desktop Patrol CS, Systemwalker Desktop Patrol DS, Systemwalker Desktop Patrol CT
- When selecting **Start Menu** > **Systemwalker Desktop Patrol CT** > **Environment Setup**

Server Environment Setup window

It is the setting window title displayed when modifying the installation of Systemwalker Desktop Patrol CS, Systemwalker Desktop Patrol DS. Besides, the size modification that can be modified in "Maximum Size" of "Contents Saving Directory" in the **Server Environment Setup** window is as follows:

	V11.0L10	V13.0.0 or Later
Title for setting window	Server properties	Server environment setup
Maximum	From 1MB to 2,147,483,648MB	From 1MB to 999,999MB

Message displayed during installation

Modification of error message when installing Systemwalker Desktop Patrol CT is displayed as follows:

V11.0L10	V13.0.0 or Later
Module startup fails. DetailCode (CT): 7	Exception occurs during download in system environment. Re-start system and install again.
Installation may not be executed normally. Stop all the running Windows applications and re-install. (Ctd Mutex Hwnd=%d)	During Contents download or patch installation. Re-install after stopping them.
Installation may not be executed normally. Stop all the running Windows applications and re-install. (Mutex: %s)	Start Contents download. Re-install after stopping it.
Installation may not be executed normally. Stop all the running Windows applications and re-install. (Mutex: %s)	Start environment setting Re-install after stopping it.
Installation may not be executed normally. Stop all the running Windows application and re-install. (Mutex: %s)	The newly received Contents information is shown. Re-install after stopping it.

Event settings

In V11.0L10, when selecting **Option > Event Output** according to event settings, if the notification information corresponding to the warning exists, it will be recorded as the event of "Category: Error" in the event log (application log) of Event Viewer, and the processing error notified by the warning will be recorded as the event of "Category: Error".

In V13.0.0 or later, the event when the notification information corresponding to the warning will be taken as "Category: Warning", the event when processing error occurred will be modified as "Category: Error".

MC window

In V13.2.0 or later, the MC window has been unified with the main menu, so it can no longer be used.

2.2 Upgrade from V13.0.0

The incompatible items when upgrading from Systemwalker Desktop Patrol V13.0.0 are as follows.

Besides, this item describes the incompatibility when upgrading from V13.0.0 to V13.2.0. when upgrading to this version, the following incompatible items should be confirmed after confirming this item.

- [2.3 Upgrade from V13.2.0](#)
- [2.5 Upgrade from V14.2.0](#)
- [2.6 Upgrade from V15.1.0](#)
- [2.7 Upgrade from V15.1.1](#)

2.2.1 Incompatible Items

This section describes incompatible items.

CS/MC required memory capacity

The disk capacity required by Systemwalker Desktop Patrol CS is modified as follows:

V13.0.0	V13.2.0 or Later
Larger than 512MB (included OS)	Larger than 768MB (excluding capacity for OS)

The disk capacity required by Systemwalker Desktop Patrol MC is modified as follows:

V13.0.0	V13.2.0 or Later
Larger than 256MB (excluding capacity for OS)	Larger than 384MB (excluding capacity for OS)

CS required disk capacity

The disk capacity required by Systemwalker Desktop Patrol CS is modified as follows:

V13.0.0	V13.2.0 or Later
737MB+ larger than registered Contents size+ registered patches size	737MB+ larger than registered Contents size+ registered patches size+ CT operation status log size

Besides, the database capacity is modified as follows:

Number of PC(s)	Collect EXE Information	Collect Metering Information	Database Capacity (V13.0.0)	Database Capacity (V13.2.0 or Later)
500	None	None	About 700MB	About 860MB
	None	Existing	About 870MB	About 1.2GB
	Existing	None	About 1.5GB	About 1.7GB
	Existing	Existing	About 1.7GB	About 2.0GB
1000	None	None	About 830MB	About 1.1GB
	None	Existing	About 1.2GB	About 1.7GB
	Existing	None	About 2.5GB	About 2.8GB
	Existing	Existing	About 2.8GB	About 3.4GB
3000	None	None	About 1.4GB	About 2.1GB
	None	Existing	About 2.4GB	About 3.9GB
	Existing	None	About 6.4GB	About 7.2GB
	Existing	Existing	About 7.4GB	About 9.0GB

Link with other products

Inventory information linking with other product cannot be collected.

- Microsoft Systems Management Server 2.0

CT operation log file

In V13.2.0 or later, CT operation log file collection function is deleted.

About installation target folder

The initial value of the installation target of Systemwalker Desktop Patrol is modified as follows:

Type	V11.0L10	V13.2.0 or Later
CS	C:\Program Files\DesktopPatrol	C:\Program Files\Fujitsu\Systemwalker Desktop Patrol

Type	V11.0L10	V13.2.0 or Later
DS, CT	C:\Program Files\ITBudgetMGR	C:\Program Files\Fujitsu\Systemwalker Desktop Patrol
MC	C:\Program Files\ITBudgetMGR_MC	C:\Program Files\Fujitsu\Systemwalker Desktop Patrol_MC

Format of Inventory information file

The form of Inventory information file is modified as follows:

Add "Login Name" in column 58.

V13.0.0 or Earlier	V13.2.0 or Later
(Omitted) Column 57: disk information (manufacturer name, model name, disk capacity (KB), disk IF, descriptions) Column 58 or later: item name (existing items) of user information	(Omitted) Column 57: disk information (manufacturer name, model name, disk capacity (KB), disk IF, descriptions) Column 58: login name Column 59~68: reserved space Column 69 or later: item name (existing items) of user information

Items displayed in the software operation status window

The displayed items in the **Assets Management > Software Operation Status** window of the main menu are modified as follows:

V13.0.0 or Earlier	V13.2.0 or Later
<ul style="list-style-type: none"> - Software/Filename - Average Running Time - Average Time of Using - Average Startup Times - Average Usage Times - Number of Registration 	<ul style="list-style-type: none"> - Software/Filename - Corresponding Number

Items displayed in the software registration PC list window

After clicking **Software/File Name** in the **Software Operation Status**, the items displayed in the appearing software registration PC list window are modified as follows:

V13.0.0 or Earlier	V13.2.0 or Later
<ul style="list-style-type: none"> - Running Software Info List - PC Name - User Name (User ID) - Startup Times - Total Usage Time 	<ul style="list-style-type: none"> - Running Software Info List - PC Name - User Name (User ID) - Total Usage Time

Items of software operation status during CSV linkage

CSV items of software operation status specified according to the Inventory information collection function of CSV linkage are modified as follows:

No.	V13.0.0	V13.2.0 or Later
0	Client Key (required)	Client Key (required)
1	Execution file name (minimum required)	Execution file name (minimum required)
2	File Size (minimum required)	[Reserved Space]
3	Update Date/Time (minimum required)	[Reserved Space]
4	Startup date (minimum required)	Startup date (minimum required)
5	Operating time (minimum required)	[Reserved Space]
6	Using time (minimum required)	[Reserved Space]
7	Start Date/Time	[Reserved Space]
8	End Date/Time	[Reserved Space]
9	Startup times (minimum required)	Startup times (minimum required)
10	Using times (minimum required)	[Reserved Space]
11	Continue mark (minimum required)	[Reserved Space]
12	User Name (minimum required)	[Reserved Space]
13	Terminal name	[Reserved Space]
14	Session name	[Reserved Space]
15	Command prompt	[Reserved Space]
16	Window title	[Reserved Space]
17	Program name	[Reserved Space]
18	Version	[Reserved Space]
19	Timestamp	[Reserved Space]
20	Code size	[Reserved Space]
21	Initialization data size	[Reserved Space]
22	Image size	[Reserved Space]
23	Checksum	[Reserved Space]

Term modification in the License window

The terms in the **Assets Management > License** window of the main menu are modified as follows:

V13.0.0 or Earlier	V13.2.0 or Later
- License construction	- License definition
- License purchase	- Current License management

Current License management

Management by serial number is deleted in V13.2.0 or later.

Method for using PC operating management function

Method for using PC operation management function is modified as follows.

V13.0.0	V13.2.0 or Later
Using by PC operation management window displayed through the following URL.	Using by PC operation management window displayed through the following procedure.

V13.0.0	V13.2.0 or Later
- http://CS server/Scripts/DTP/F3GU1SVM.dll/frame	- The Assets Management window > the Set tab > PC Operation Management of the main menu

Method for displaying CT Help

Method for displaying CT Help is modified as follows:

V13.0.0 or Earlier	V13.2.0 or Later
Display CT Help through the help button in the CT environment setup window and Contents download window.	Display CT Help through Windows start menu.

2.3 Upgrade from V13.2.0

The incompatible items when upgrading from Systemwalker Desktop Patrol V13.2.0 are as follows.

Besides, this item describes the incompatibility when upgrading from V13.2.0 to V14.2.0. When upgrading to this version, the following incompatible items should be confirmed after confirming this item.

- [2.5 Upgrade from V14.2.0](#)
- [2.6 Upgrade from V15.1.0](#)
- [2.7 Upgrade from V15.1.1](#)
-

2.3.1 Incompatible Operating Environment

This section describes the incompatible operating environment.

Supported OS

The following OS are not supported.

- Client (CT)
 - Microsoft(R) Windows NT(R) Server 4.0
 - Microsoft(R) Windows NT(R) Workstation 4.0
 - Microsoft(R) Windows(R) 98
 - Microsoft(R) Windows(R) Me

Web Browser

The following version is not supported.

- Microsoft(R) Internet Explorer 5.5 (Service Pack 2)

CS required memory capacity

The memory capacity Systemwalker Desktop Patrol CS required is modified as follows:

V13.2.0	V14.2.0
Larger than 768MB (excluding capacity for OS)	Larger than 1024MB (excluding capacity for OS)

CS required disk capacity

The database capacity constructed in Systemwalker Desktop Patrol CS is modified as follows:

Number of PC	Collect EXE Information	Collect Metering Information	Database Capacity (V13.2.0)	Database Capacity (V14.2.0)
500	None	None	About 860MB	About 4.0GB
	None	Existing	About 1.2GB	About 4.8GB
	Existing	None	About 1.7GB	About 5.6GB
	Existing	Existing	About 2.0GB	About 6.4GB
1000	None	None	About 1.1GB	About 6.1GB
	None	Existing	About 1.7GB	About 7.7GB
	Existing	None	About 2.8GB	About 9.3GB
	Existing	Existing	About 3.4GB	About 10.8GB
3000	None	None	About 2.1GB	About 13.1GB
	None	Existing	About 3.9GB	About 17.2GB
	Existing	None	About 7.2GB	About 21.4GB
	Existing	Existing	About 9.0GB	About 25.5GB

2.3.2 Function Incompatibility

This section describes incompatibilities of functions.

Systemwalker Desktop Integrated Console

Systemwalker Desktop Integrated Console has been deleted since V14.2.0.

Main menu

Items displayed in the Software Auditing window

Items displayed in **Software Auditing > Security Patch** window of the main menu are modified as follows:

V13.2.0/V13.2.1 or Earlier	V14.2.0
The following number of machines is displayed. <ul style="list-style-type: none"> - Correspondent number of machines - Non correspondent number of machines 	The following number of machines is displayed (not display the non correspondent number of machines) <ul style="list-style-type: none"> - Correspondent Number

Items displayed in the PC Information > Security Information window

Items displayed in the **PC Information > Security Information** window of the main menu are modified as follows:

V13.2.0/V13.2.1 or Earlier	V14.2.0
Not correspondent	Cannot be collected

Items displayed in PC Information > Security Information > System Security Information

Items displayed in the **PC Information > Security Information > System Security Information** window of the main menu are modified as follows:

V13.2.0/V13.2.1 or Earlier		V14.2.0	
Category	Displayed items	Category	Displayed items
BIOS status	Startup password	Hardware	BIOS Startup password
	Setting password		BIOS Setup password
Login status	Automatic login	OS	Automatic Logon
	Use [Welcome]		Welcome Screen
	Display the final user ID		Last User Name

Items displayed in PC Information > Security Information > User Security Information

Items displayed in the **PC Information > Security Information > User Security Information** window of the main menu are modified as follows:

V13.2.0/V13.2.1 or Earlier		V14.2.0	
Category	Displayed items	Category	Displayed items
Screen Saver	Startup	OS	Screen Saver
	Remove the password		Screen Saver Password
IE security zone	Internet zone	Internet Explorer	Internet zone

Warning notification item in the Event Settings window

The warning notification item in the **Event Settings** window is modified as follows:

V13.2.0 or Earlier	V14.2.0
Unapplied security patches	Software Auditing

Besides, file name of warning notification is modified as follows:

V13.2.0 or Earlier	V14.2.0
Unapplied security patches information file (security_ng.csv)	Software auditing information file (software_install.csv)

Format of Inventory information file

The format of Inventory information file downloaded through the **Assets Management > Inventory Information** window of the main menu is modified as follows:

V13.2.0 or Earlier	V14.2.0
Download all Inventory items.	Download Inventory items same as the items displayed in the PC Information > Inventory Information window.

Besides, the following item name of Inventory information file will be modified. Add items to Column 59 and Column 60.

The previous Column 14 is the date for reflecting to Systemwalker standard database, but it has modified as the date for Inventory Collection.

Column No.	Item of V13.2.0 or Earlier	Item of V14.2.0
13	Software Dictionary Version	Software Dictionary Date / Time
14	Update Date/Time	Collection Date/Time
16	Computer Properties	PC Properties

Column No.	Item of V13.2.0 or Earlier	Item of V14.2.0
29	Computer Vender Name	PC Manufacturer
30	Computer Model	PC Type
31	Computer Serial Number	PC Serial Number
32	Primary Cache Size	Primary Cache
33	Secondary Cache Size	Secondary Cache
34	Drive Information (Drive Name, Drive Type, Capacity, Free Capacity, Volume, File System Information)	Drive information (Drive name, Drive Type, Drive Capacity, Drive Free Capacity, Volume, File System Information)
43	User Name	OS User Name
44	Company Name	OS OU Name
45	OS product ID	Product ID of OS
52	Display name	Display Item
59	- (Reserved zone)	Connection Target Server Name
60	- (Reserved zone)	Software Dictionary Icon

2.4 Upgrade from V13.3.0

The incompatible items when upgrading from Systemwalker Desktop Patrol V13.3.0 are as follows.

Besides, this item describes the incompatibility when upgrading from V13.3.0 to V14.0.0/V14.0.1. When upgrading to this version, the following incompatible items should be confirmed after confirming this item.

- [2.5 Upgrade from V14.2.0](#)
- [2.6 Upgrade from V15.1.0](#)
- [2.7 Upgrade from V15.1.1](#)

2.4.1 Function Incompatibility

This section describes incompatibilities of functions.

MC window

- As of V14.0.0/V14.0.1, functions previously accessed via the MC window are provided via the main menu.
As a result, the MC window is no longer provided.
- Previously, when performing file searches of user definitions (Category > Enterprise policy > Local in the old MC window), some search conditions were registered automatically when **View** was used to set the file name.
In V14.0.0/V14.0.1, registration is performed manually or using dtpfinfo.exe (getting detailed information of executable file command).
- Previously, in the software operation status of the user definitions (Category > Enterprise policy > Local in the old MC window), PE headers were obtained by selecting a file.
In V14.0.0/V14.0.1, registration is performed using dtpfinfo.exe (getting detailed information of executable file command).
- In V14.0.0/V14.0.1, folders specified and registered as distributed software (Category > Software in the old MC window) need to be compressed in zip format beforehand.
- Previously, when scheduled download of security patches from the Microsoft public server was not performed, it was necessary to select the patches for download.
In V14.0.0/V14.0.1, security patches are automatically downloaded from the Microsoft public server if they are set as distribution target in the distributed software setup window.

Unapplied patch detection schedule settings

- As of V14.0.0/V14.0.1, unapplied patches are periodically detected automatically.
As a result, unapplied patch detection schedule settings are no longer provided.

Main menu

- The menu window (top window of the main menu) has been removed, and each feature can be operated from the top of the window.
As a result, password changes can be invoked from the top window.
- Systemwalker design has been unified.
As a result, the privileges icon is no longer displayed when the user is logged in.
- The view/settings tabs have been removed from each window, and the information of both tabs can now be viewed in a single window.
- The method of specifying the display range of the section tree or software group tree has been changed.
The user now can simply change the selection state of **Lower-level Included**, and the listed information will be updated, without having to select the section or software group.
- Previously, it was necessary to use a single policy or patch setup for each PC group.
In V14.0.0/V14.0.1, a single policy or patch setup can be used for multiple PC groups.
- The security management settings **Confirm newly arrived security patches** and **Settings of Automatic Installation of Security Patch** of the basic operation policy have been merged into **Settings of Automatic Installation of Security Patch**.
- The location for specifying the DS download destination has been changed from Desktop Patrol Settings > **DS Download to Environment Setup > CS/DS Settings and Operation Status**.
- The lease management feature has expanded functionality in **Management Ledger** > contract management.
As a result, the **Lease Management** window is no longer provided.

Download menu

- The menu window (top window of the download menu) has been removed, and each feature can be operated from the top of the window.

Hardware information

- The method of representing the CPU name has been changed.

Example:

V13.3.0: Pentium 4

V14.0.0/V14.0.1: Intel(R) Pentium(R) 4 CPU 3.40 GHz

- The method of obtaining the CPU clock count has been changed.

Previously, the value obtained from the operating clock count was used, however, the value obtained in WMI from the hardware information is now displayed.

Client

- Operation during logon

In V14.0.0/V14.0.1, on PCs that have not been shut down, recovery from the first standby/hibernation of the day will operate as if it were the timing of Windows logon.

Client auditing tool

- The name of the client auditing tool has been changed in the **Diagnosis result window of operation settings** window.
- Processor power management

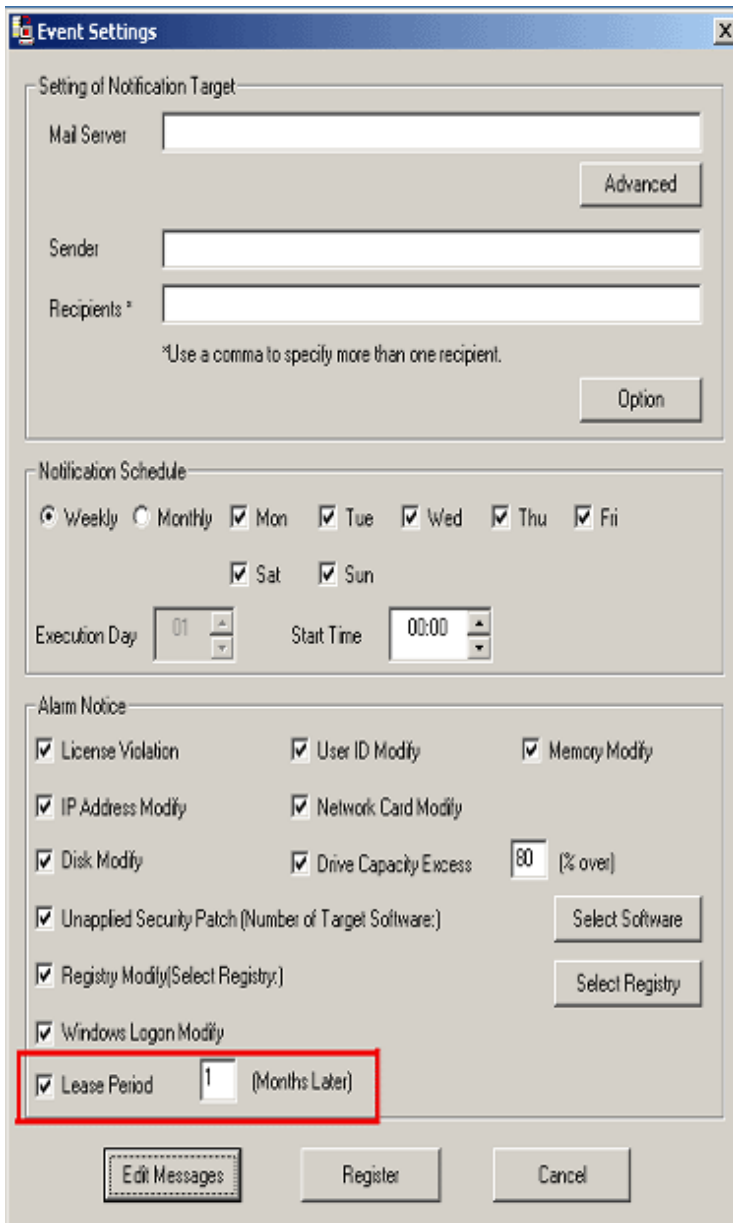
In V13.3.0 on Windows XP/2003, the processor adjustment value was audited for processor efficiency.

In V14.0, it is no longer audited, because this does not significantly impact on power saving operation of PCs.

Alarm notification feature

The alarm notification feature of the lease period has been moved to the Contract Expiration Notification feature. As a result, the **Lease Period** item of the alarm notification feature is no longer provided.

The following shows the window used for setting the alarm notification feature before the upgrade to V14.0.0/V14.0.1.



The screenshot shows the 'Event Settings' dialog box with the following sections:

- Setting of Notification Target:** Includes text boxes for 'Mail Server', 'Sender', and 'Recipients *'. There are 'Advanced' and 'Option' buttons.
- Notification Schedule:** Includes radio buttons for 'Weekly' (selected) and 'Monthly', and checkboxes for days of the week (Mon, Tue, Wed, Thu, Fri, Sat, Sun). It also has 'Execution Day' (01) and 'Start Time' (00:00) spinners.
- Alarm Notice:** Includes checkboxes for various events: License Violation, IP Address Modify, Disk Modify, Unapplied Security Patch, Registry Modify, Windows Logon Modify, User ID Modify, Network Card Modify, Drive Capacity Excess (80% over), and Memory Modify. There are 'Select Software' and 'Select Registry' buttons.
- Lease Period:** This option is checked and highlighted with a red box. It is set to '1 (Months Later)'.

At the bottom, there are buttons for 'Edit Messages', 'Register', and 'Cancel'.

After upgrading to V14.0.0/V14.0.1, the **Event Settings** window is changed as shown below.

Event Settings

Setting of Notification Target

Mail Server

Advanced

Sender

Recipients *

*Use a comma to specify more than one recipient.

Option

Notification Schedule

Weekly Monthly Mon Tue Wed Thu Fri

Sat Sun

Execution Day Start Time

Alarm Notice

License Violation User ID Modify Memory Modify

IP Address Modify Network Card Modify

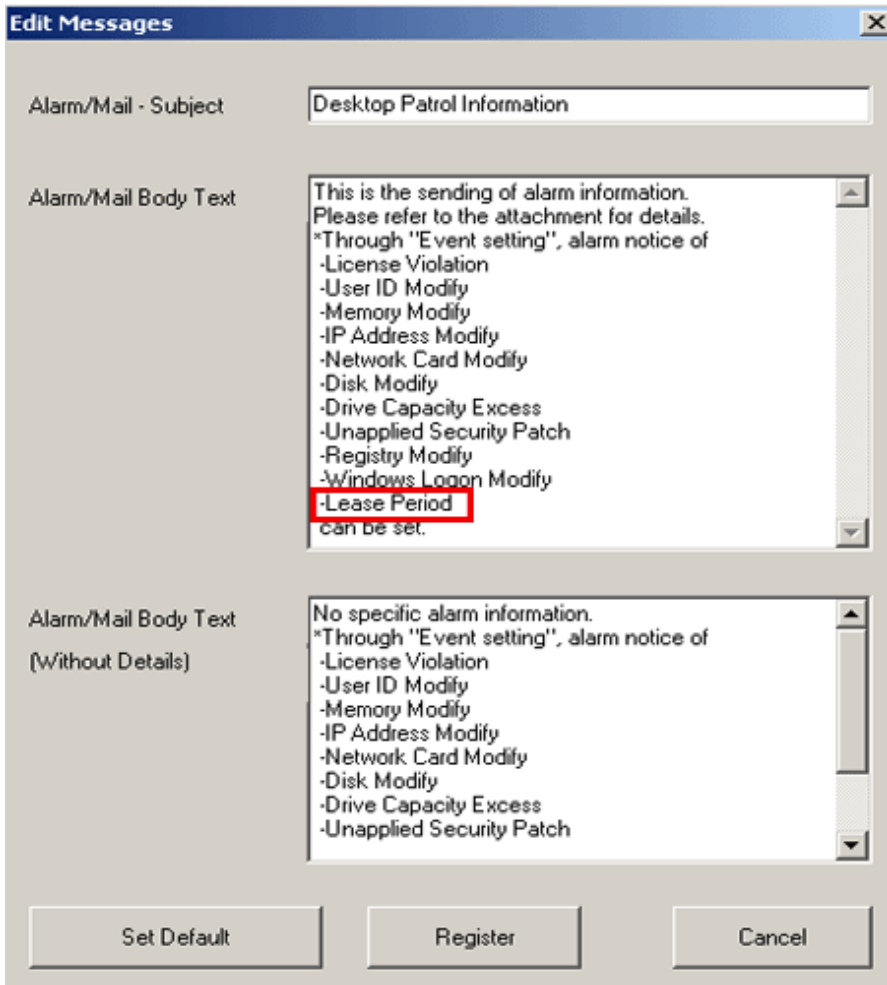
Disk Modify Drive Capacity Excess (% over)

Unapplied Security Patch (Number of Target Software:)

Registry Modify(Select Registry:)

Windows Logon Modify

It should be noted that, by default, the "Lease Period" description related to lease management remains in the **Edit Messages** window. If this description is not required, delete it. There is no notification of Lease period information file in relation to lease management. Information such as the lease subject is included in the email body text.



Contents download

- Permission for downloading to individual PCs is not set in conjunction with **License Giving**.
To distribute to individual PCs, use the software group for distribution.

2.5 Upgrade from V14.2.0

This section lists the items that become incompatible after upgrade from Systemwalker Desktop Patrol V14.2.0.

- [2.6 Upgrade from V15.1.0](#)
- [2.7 Upgrade from V15.1.1](#)

2.5.1 Incompatible Operating Environment

This section explains the incompatibilities in the operating environment.

Supported OS

The following OSs (service packs) are no longer supported:

- Corporate Server (CS)
 - Microsoft(R) Windows Server(R) 2003, Standard Edition
 - Microsoft(R) Windows Server(R) 2003, Enterprise Edition
 - Microsoft(R) Windows Server(R) 2003, Standard x64 Edition

- Microsoft(R) Windows Server(R) 2003, Enterprise x64 Edition
- Microsoft(R) Windows Server(R) 2003 R2, Standard Edition
- Microsoft(R) Windows Server(R) 2003 R2, Enterprise Edition
- Microsoft(R) Windows Server(R) 2003 R2, Standard x64 Edition
- Microsoft(R) Windows Server(R) 2003 R2, Enterprise x64 Edition
- Microsoft(R) Windows Server(R) 2008 Foundation Original Release
- Microsoft(R) Windows Server(R) 2008 Standard Original Release
- Microsoft(R) Windows Server(R) 2008 Enterprise Original Release
- Microsoft(R) Windows Server(R) 2008 Standard without Hyper-V(TM) Original Release
- Microsoft(R) Windows Server(R) 2008 Enterprise without Hyper-V(TM) Original Release
- Domain Server (DS)
 - Microsoft(R) Windows Server(R) 2003, Standard Edition
 - Microsoft(R) Windows Server(R) 2003, Enterprise Edition
 - Microsoft(R) Windows Server(R) 2003, Standard x64 Edition
 - Microsoft(R) Windows Server(R) 2003, Enterprise x64 Edition
 - Microsoft(R) Windows Server(R) 2003 R2, Standard Edition
 - Microsoft(R) Windows Server(R) 2003 R2, Enterprise Edition
 - Microsoft(R) Windows Server(R) 2003 R2, Standard x64 Edition
 - Microsoft(R) Windows Server(R) 2003 R2, Enterprise x64 Edition
 - Microsoft(R) Windows Server(R) 2008 Foundation Original Release
 - Microsoft(R) Windows Server(R) 2008 Standard Original Release
 - Microsoft(R) Windows Server(R) 2008 Enterprise Original Release
 - Microsoft(R) Windows Server(R) 2008 Standard without Hyper-V(TM) Original Release
 - Microsoft(R) Windows Server(R) 2008 Enterprise without Hyper-V(TM) Original Release
- Client Terminal (CT)
 - Microsoft(R) Windows Server(R) 2003, Standard Edition
 - Microsoft(R) Windows Server(R) 2003, Enterprise Edition
 - Microsoft(R) Windows Server(R) 2003, Standard x64 Edition
 - Microsoft(R) Windows Server(R) 2003, Enterprise x64 Edition
 - Microsoft(R) Windows Server(R) 2003 R2, Standard Edition
 - Microsoft(R) Windows Server(R) 2003 R2, Enterprise Edition
 - Microsoft(R) Windows Server(R) 2003 R2, Standard x64 Edition
 - Microsoft(R) Windows Server(R) 2003 R2, Enterprise x64 Edition
 - Microsoft(R) Windows Server(R) 2008 Foundation Original Release
 - Microsoft(R) Windows Server(R) 2008 Standard Original Release
 - Microsoft(R) Windows Server(R) 2008 Enterprise Original Release
 - Microsoft(R) Windows Server(R) 2008 Standard without Hyper-V(TM) Original Release
 - Microsoft(R) Windows Server(R) 2008 Enterprise without Hyper-V(TM) Original Release

- Microsoft(R) Windows(R) XP Professional Service Pack 3
- Microsoft(R) Windows(R) XP Home Edition Service Pack 3
- Microsoft(R) Windows(R) XP Professional Original Release, and Service Pack 1/1a/2
- Microsoft(R) Windows(R) XP Home Edition Original Release, and Service Pack 1/1a/2
- Microsoft(R) Windows Vista(R) Ultimate Original Release, and Service Pack 1
- Microsoft(R) Windows Vista(R) Enterprise Original Release, and Service Pack 1
- Microsoft(R) Windows Vista(R) Business Original Release, and Service Pack 1
- Microsoft(R) Windows Vista(R) Home Premium Original Release, and Service Pack 1
- Microsoft(R) Windows Vista(R) Home Basic Original Release, and Service Pack 1
- Microsoft(R) Windows Vista(R) Ultimate 64-bit Version Original Release, and Service Pack 1
- Microsoft(R) Windows Vista(R) Enterprise 64-bit Version Original Release, and Service Pack 1
- Microsoft(R) Windows Vista(R) Business 64-bit Version Original Release, and Service Pack 1
- Microsoft(R) Windows Vista(R) Home Premium 64-bit Version Original Release, and Service Pack 1
- Microsoft(R) Windows Vista(R) Home Basic 64-bit Version Original Release, and Service Pack 1
- AC
 - Microsoft(R) Windows(R) XP Professional Service Pack 3
 - Microsoft(R) Windows(R) XP Home Edition Service Pack 3
 - Microsoft(R) Windows(R) XP Professional Original Release, and Service Pack 1/1a/2
 - Microsoft(R) Windows(R) XP Home Edition Original Release, and Service Pack 1/1a/2
 - Microsoft(R) Windows Vista(R) Ultimate Original Release, and Service Pack 1
 - Microsoft(R) Windows Vista(R) Enterprise Original Release, and Service Pack 1
 - Microsoft(R) Windows Vista(R) Business Original Release, and Service Pack 1
 - Microsoft(R) Windows Vista(R) Home Premium Original Release, and Service Pack 1
 - Microsoft(R) Windows Vista(R) Home Basic Original Release, and Service Pack 1
 - Microsoft(R) Windows Vista(R) Ultimate 64-bit Version Original Release, and Service Pack 1
 - Microsoft(R) Windows Vista(R) Enterprise 64-bit Version Original Release, and Service Pack 1
 - Microsoft(R) Windows Vista(R) Business 64-bit Version Original Release, and Service Pack 1
 - Microsoft(R) Windows Vista(R) Home Premium 64-bit Version Original Release, and Service Pack 1
 - Microsoft(R) Windows Vista(R) Home Basic 64-bit Version Original Release, and Service Pack 1
- ADT
 - Microsoft(R) Windows Server(R) 2003, Standard Edition
 - Microsoft(R) Windows Server(R) 2003, Enterprise Edition
 - Microsoft(R) Windows Server(R) 2003, Standard x64 Edition
 - Microsoft(R) Windows Server(R) 2003, Enterprise x64 Edition
 - Microsoft(R) Windows Server(R) 2003 R2, Standard Edition
 - Microsoft(R) Windows Server(R) 2003 R2, Enterprise Edition
 - Microsoft(R) Windows Server(R) 2003 R2, Standard x64 Edition
 - Microsoft(R) Windows Server(R) 2003 R2, Enterprise x64 Edition

- Microsoft(R) Windows Server(R) 2008 Foundation Original Release
- Microsoft(R) Windows Server(R) 2008 Standard Original Release
- Microsoft(R) Windows Server(R) 2008 Enterprise Original Release
- Microsoft(R) Windows Server(R) 2008 Standard without Hyper-V(TM) Original Release
- Microsoft(R) Windows Server(R) 2008 Enterprise without Hyper-V(TM) Original Release
- Microsoft(R) Windows(R) XP Professional Service Pack 3
- Microsoft(R) Windows(R) XP Home Edition Service Pack 3
- Microsoft(R) Windows(R) XP Professional Original Release, and Service Pack 1/1a/2
- Microsoft(R) Windows(R) XP Home Edition Original Release, and Service Pack 1/1a/2
- Microsoft(R) Windows Vista(R) Ultimate Original Release, and Service Pack 1
- Microsoft(R) Windows Vista(R) Enterprise Original Release, and Service Pack 1
- Microsoft(R) Windows Vista(R) Business Original Release, and Service Pack 1
- Microsoft(R) Windows Vista(R) Home Premium Original Release, and Service Pack 1
- Microsoft(R) Windows Vista(R) Home Basic Original Release, and Service Pack 1
- Microsoft(R) Windows Vista(R) Ultimate 64-bit Version Original Release, and Service Pack 1
- Microsoft(R) Windows Vista(R) Enterprise 64-bit Version Original Release, and Service Pack 1
- Microsoft(R) Windows Vista(R) Business 64-bit Version Original Release, and Service Pack 1
- Microsoft(R) Windows Vista(R) Home Premium 64-bit Version Original Release, and Service Pack 1
- Microsoft(R) Windows Vista(R) Home Basic 64-bit Version Original Release, and Service Pack 1

Hardware environment

For CS/DS/CT/SS, the hardware environment required for using Systemwalker Desktop Patrol has been changed.

Refer to "Required Hardware" in the *User's Guide* for details on hardware environment.

Prerequisite products

Product version of Symfoware is no longer required.

(Symfoware functions are included in Desktop Patrol.)

2.5.2 Function Incompatibility

This section describes incompatibilities of functions.

Status window and security auditing report

In auditing result display for a **PCs violating security policy**, the auditing result will indicate **OK** if firewall has been set twice or more.

Main menu

The main menu has been changed as follows:

Refer to "[Appendix A Term Table](#)" for details on the main menu terms.

Category	V14.2.0 or Earlier	V15.1.0
Detail of Device window > Details of Contract tab	Original Contract No. or Mainte Code with underline link	(Detail of Contract) is added to Original Contract No. or Mainte Code without underline link. By selecting

Category	V14.2.0 or Earlier	V15.1.0
		(Detail of Contract) , contract information details are displayed.

Systemwalker Desktop Patrol AC

Report output function

"Best" and "worst" used as output information type have been changed to "high achievement rates" and "low achievement rates".

Updater

If you register the DS updater for version upgrade, the upgrade will also be applied to the CT on the DS.

If you register the CT updater for version upgrade, however, the upgrade will not be applied to the CT on the DS.

Displaying a Windows server/client

For the following case, the **Start** menu (**Apps** screen) structure registered during Systemwalker Desktop Patrol installation has been changed, with the layered display of the submenu removed, and directory names in the submenu omitted to make way for a new display style where menus are placed next to each other.

- If upgraded from Windows Server(R) 2008 or Windows(R) 7 or earlier to Windows Server(R) 2012 or Windows(R) 8

Note that the icon images and names for invocation displayed in each menu have not been changed.



Information

Customization of the Apps screen for Windows Server(R) 2012 and Windows(R) 8

- Grouping can be done by dragging and dropping the icons in the **Apps** screen.
- The **Apps** screen size can be decreased by rotating the wheel backwards while pressing Ctrl on the **Apps** screen. Once the **Apps** screen size has been decreased, group names can be renamed by selecting the icon group.

To check which product the **Apps** screen shortcut is for, right-click the shortcut and then select **Open file location** from the menu at the bottom of the screen. This will open the file location in **Windows Explorer**, where the product name can be checked.

Event settings

The **Event Settings** window has been changed as follows:

Category	V14.2.0 or Earlier	V15.1.0
Alarm notification	-	The order of the check boxes has been changed.
	Add or Remove Software	Add Or Remove Product

File

The file names have been changed as follows:

Category	V14.2.0 or Earlier	V15.1.0
File	Add or remove programs information file	Product information file
	Software addition or deletion change information file	Product information addition and deletion change information file

Source name of the event log

In environments where CS has been installed, the source name of the event log output from the database has been changed as follows:

Category	V14.2.0 or earlier	V15.1.0
Source name of the event log	SymfoWARE RDB	AssetMgr RDB

Connecting from a CT in V14.2.0 or earlier

Connection from a CT in V14.2.0 or earlier will no longer be possible. To authorize connection, the CustomPolicy command must be used to configure the settings. Refer to the *Reference Manual* for details on CustomPolicy.exe (policy for modifying custom setup).

Operations during the execution of PC Information > Inventory Collection on the main menu

In V14.2.0 or earlier, when a CT is selected for **PC Information** on the main menu, and **Inventory Collection** is executed, collection was performed in accordance with the inventory collection behavior (default was difference collection) of the CT. In V15.1.0, however, all inventory information is collected before notifying the server.

Security diagnosis result window

If you upgrade the version of a CT of Windows 7 (original release) or Windows Server 2008 R2 (original release), the **Diagnosis result window of operation settings** will indicate a failure. Also, the PC will be deemed as one with a security problem, and aggregated as such on the main menu.

To prevent CTs that use these operating systems from treating this scenario as a failure, change the support status of the operating system in the security policy to **Not Auditing** before the version upgrade.

Omission in the EXE information file path

In EXE information collection, collected file paths exceeding 127 fullwidth characters or 380 halfwidth characters will be displayed truncated. As of V15.1.0, however, the file path will be collected and displayed with some middle section of it omitted.

Change in current license information file format

The following items have been added between the 7th and 8th columns of the current license information file (refer to "Current License Information File" in the *Reference Manual* for details).

No	Item
8	Supplier
9	Purchasing department
10	Purchaser
11	License type
12	License type (remarks)
13	License form
14	License form (remarks)
15	License agreement
16	License agreement (remarks)
17	License certificate
18	Certificate number
19	Management department
20	Storage location
21	Previous license management number
22	Other conditions

No	Item
23	Scheduled update date

The security patch group name and security patch name for the software dictionary group

Security patch for the software dictionary group in **Distribution > Security Patches Distribution and Environment Setup > Software Auditing** in the main menu, security patch group names and names for Windows XP or earlier have been changed. The security patches that depend on Japanese, English, or Chinese (Simplified Chinese) will display the depended language in their names and group names.

Procedures for version upgrade

The procedure for version upgrade in environments in which V13.2.0 or earlier is used will change.

For V13.2.0 or earlier, registration of the CT updater for upgrade in the following directory will be added.

```
<DVD-ROM>\utilites\tool\upd v132
```

Refer to "Procedures for Version Upgrade by Applying Updater" in the *Installation Guide* for details.

About language display

When Systemwalker Desktop Patrol is upgraded in V15.1.0 from V13.2.0 or V14.2.0, Chinese display is changed to English display.

2.6 Upgrade from V15.1.0

There are no incompatible items when upgrading from Systemwalker Desktop Patrol V15.1.0.

There may however be incompatibilities between V15.1.0 and V15.1.1. When upgrading to V15.1.1, check the items in this section before checking the incompatible items in the following section:

- [2.7 Upgrade from V15.1.1](#)

2.7 Upgrade from V15.1.1

2.7.1 Function Incompatibility

Terms have been modified as follows:

Terms that were changed in V15.1.3 or later

Terms that were changed in V15.1.3 or later are as follows:

Term in V15.1.1 or earlier	Term in V15.1.3 or later
Systemwalker Desktop Patrol SS (Smartdevice Server)	Systemwalker Desktop Patrol SS (Smartdevice and Secure server)

Chapter 3 Migration to This Product

This chapter explains migration performed when upgrading Systemwalker Desktop Patrol.

Migration between 32-bit and 64-bit products

Version before migration	Version after migration	
	64-bit products	32-bit products
64-bit products	Y	N
32-bit products	N	Y

Y: Can be migrated

N: Cannot be migrated

Migration from previous versions

Version before migration		Version after migration
		V15.1.3
Systemwalker Desktop Patrol	V15.1.1	Y (*1)
	V15.1.0	Y (*1)
	V14.2.0	Y (*1)
Systemwalker Desktop Patrol Standard Edition	V13.2.0	Y (*1)
	V13.0.0	Y (*1)
	V11.0L10	Y (*1)
Systemwalker Desktop Patrol Base Edition	V13.2.0	Y (*1)
	V13.0.0	Y (*1)
	V11.0L10	Y (*1)

Y: Can be migrated

*1: Refer to "Upgrading" in the *Installation Guide* for details on the migration procedure. The operating systems supported by each version may be different. Refer to "Operating System" in the *User's Guide* to check if an operating system supported in the version before migration is also supported in the version after migration.

Appendix A Term Table

Terms that were changed since V13.0.0

Terms that were changed since V13.0.0 are as follows:

Terms in V11.0L10	Terms in V13.0.0 or later	Note
Web Tools	Desktop Patrol Main Menu Desktop Patrol Download Menu	
Name of Application	Name of Program	
Add or Remove Applications	Add or Remove Programs	
Error PC	PC without configuration	
Enterprise Policy	Software Dictionary	
System Administrators Privilege Administrators Privilege	System account or Section management account	When all operations of Systemwalker Desktop Patrol are performed, system account is used. When the operations of section and affiliated section are performed, section management account is used.
Client Privilege	User account	
Employee	User	
Employee ID	User ID	
Employee master Employee password master E-mail Information master Affiliated master	User Management Information	
Building master	Building Management Information	
Division	Section	
Master	Master Management Information	
Machine	PC	
Metering Information	Software Operation Status	

Terms that were changed since V13.2.0

Terms that were changed since V13.2.0 are as follows:

Terms in V13.0.0 or earlier	Terms in V13.2.0	Note
Manage License	License Definition	
License Purchase	Current License Management	

Terms that were changed in V14.2.0

Terms that were changed in V14.2.0 are as follows:

Terms in V13.2.0 or earlier	Terms in V14.2.0	Note
Assets Management	PC Information	
Security Management	-	
Setup Management	Environment Setup	
Security Management	PC Information - Security Information	
Installation of Software	Software Audit	
Installation of Anti-Virus Software	Software Audit	
Application of Security Patch	Software Audit	
Setup Management - DS Download	Environment Setup- CS/DS Settings and Operation Status	
Setup Management - Policy Group Management/Client Policy	Setting Working Group of CT	
MC - Enterprise Policy	Environment Setup - Software Auditing	
MC - Software/Patch	Software Distribution	
MC - Server Policy/Property	Environment Setup - CS/DS Settings/ Option	
Enterprise Policy	Software Dictionary	
Enterprise	Support Center Definition	
Local	User Definition	
Anti-Virus Software	Anti-Virus Software	
LicenseSoftware	Software	
Automatic Patch Application	Security Patch	
Prohibition Application	Prohibition Software	
Creating Date of Software Dictionary	Creating Date by Support Center	
Updating Date of Software Dictionary	Date of Software Dictionary Update	
Application Name/Name	Name	
License Group	Software Group	
License Code	Software Code	
Version	Note	
License Relation Definition/ Judgment Formula	Combination Condition	
Distribution Status	Distribution Preparation Status	
Regular Name	CS/DS Name	
Contents	Software Distribution	
Server Name	CS/DS Name	
Contents Distribution	Software Distribution	
Use Prohibition Application	Prohibition Software	
Download	CSV Export	
Only Departmen/All Departments	Low-level Included	
Contents Download	Software Download	

Terms in V13.2.0 or earlier	Terms in V14.2.0	Note
PC Model Name	Model Name	
PC Manufacturer	Manufacturer Name	
PC Serial Number	Serial Number	

Terms that were changed since V15.1.0

Terms that were changed since V15.1.0 are as follows:

Terms in V14.2.0 or earlier	Terms in V15.1.0 or later	Note
Number of PC by section	Aggregate by section	Status window
Number of PC by item	Aggregate by item	Status window
Product Name - Desktop Patrol - Desktop Keeper	Function Name - Asset Management - Log Management	Text at the beginning of messages displayed in message boxes on the Status window
Add or Remove Programs	Product Information	PC Information window
Add or Remove Programs	Product Information	Tab in the PC Information window displayed from the list of PCs
Search for "Add or Remove Program"	Search for "Product Information"	Settings of Software Auditing > User Definition
License Management	License	main menu
Management Ledger	Ledger	main menu
User Management	Users	Environment Setup
Section Management	Sections	Environment Setup
Policy Group Management	Policy Groups	Environment Setup
Settings of Software Auditing	Software Auditing	Environment Setup
CS/DS Settings and Operation Status	CS/DS Settings and Status	Environment Setup
PC Not Collecting Inventory Information	PCs for which inventory information has not been collected	Status Window
PC Not Installing Security Patches	PCs on which security patches have not been installed	Status Window
PC Violating Security Policy	PCs violating security policy	Status Window
PC Violating Power Saving Policy	PCs violating power saving policy	Status Window

Terms that were changed in V15.1.3 or later

Terms that were changed in V15.1.3 or later are as follows:

Terms in V15.1.1 or earlier	Terms in V15.1.3 or later	Remarks
Systemwalker Desktop Patrol SS (Smartdevice Server)	Systemwalker Desktop Patrol SS (Smartdevice and Secure server)	

Appendix B Window Operation Table

The following tables describe incompatibility of window operations.

B.1 MC Window in Earlier Versions

In Systemwalker Desktop Patrol V15, MC Window is changed as follows:

Server policies

MC Window Earlier Versions			V15 main menu			
Function Category	Sub-category	Item	Function Category	Main Category	Sub-category	Item
Collect files	-	Collect file names	None	None		
Download messages	-	Download messages	Environment setup	Option	Set software download	Download messages

Server properties

MC Window Earlier Versions			V15 main menu			
Function Category	Sub-category	Item	Function Category	Main Category	Sub-category	Item
Server information	-	Routine name	Environment setup	CS/DS settings and working situation	CS settings DS settings	CS name DS name
		Host name	Environment setup	CS/DS settings and working situation	CS settings DS settings	Host name
		Upper host name	Environment setup	CS/DS settings and working situation	DS settings	Upper CS/DS
Server information - Details	Server information	Administrator ID	CustomPolicy command			
		Port number: Contents release	None			
		Port number: Inventory transmission	None			
	Upper Server information	Host name	None			
		Port number: Contents release	None			

MC Window Earlier Versions			V15 main menu			
Function Category	Sub-category	Item	Function Category	Main Category	Sub-category	Item
		Port number: Inventory transmission	None			
	Communication with lower server and client	Maximum number of concurrent connections	CustomPolicy command			
		Size of transmission buffer	CustomPolicy command			
	Communication with upper server	Retry: interval	CustomPolicy command			
		Retry: times	CustomPolicy command			
		Timeout time	CustomPolicy command			
		Transmission interval	CustomPolicy command			
	Proxy	Use proxy during the communication with upper server and patch public server	Environment setup	CS/DS settings and working situation	Settings for the communication with public servers/support center (settings for the communication with upper CS/DS)	Use proxy
		Proxy server name	Environment setup	CS/DS settings and working situation	Settings for the communication with public servers/support center (settings for the communication with upper CS/DS)	Proxy server name
		Port number	Environment setup	CS/DS settings and working situation	Settings for the communication with public servers/support center (settings for the communication with upper CS/DS)	Port number
		Proxy user name	Environment setup	CS/DS settings and working situation	Settings for the communication with public servers/support center (settings for the	User name

MC Window Earlier Versions			V15 main menu			
Function Category	Sub-category	Item	Function Category	Main Category	Sub-category	Item
					communication with upper CS/DS)	
		Proxy password	Environment setup	CS/DS settings and working situation	Settings for the communication with public servers/support center (settings for the communication with upper CS/DS)	User name
		Do not use the domain name of the proxy server	Environment setup	CS/DS settings and working situation	Settings for the communication with public servers/support center (settings for the communication with upper CS/DS)	Do not use the domain name of the proxy server
	Inventory transmission	Polling interval	CustomPolicy command			
		Directory for saving collected files	CustomPolicy command			
Patch setting	Select published server	Published server	CustomPolicy command			
	-	Automatically download patches from the public server as planned	Environment setup	Option	Set security patches	Automatically download security patches from the public site as planned
		Download statistics -Service Pack -Security	Environment setup	Option	Set security patches	Automatically download objects
	Task plan	-Time	Environment setup	Option	Set security patches	Task plan
		-Daily -Weekly	Environment setup	Option	Set security patches	Task plan
Patch setting-Details	Retry when automatic download fails	Retry times	CustomPolicy command			
		Retry interval	CustomPolicy command			
Contents release	-	Download interval	Environment setup	CS/DS settings and working situation	Settings for the communication with public servers/support center (settings for the	Interval for the communication with the support center

MC Window Earlier Versions			V15 main menu			
Function Category	Sub-category	Item	Function Category	Main Category	Sub-category	Item
					communication with upper CS/DS)	Interval for the communication with upper CS/DS
		Start time for download	Environment setup	CS/DS settings and working situation	Settings for the communication with public servers/support center (settings for the communication with upper CS/DS)	Time segment for communication with the support center Time segment for receiving distribution software
		End time for download	Environment setup	CS/DS settings and working situation	Settings for the communication with public servers/support center (settings for the communication with upper CS/DS)	Time segment for communication with the support center Time segment for receiving distribution software
		Policy/attribute release in a non-download period	CustomPolicy command			
Contents release - Details	-	Software list update time	CustomPolicy command			
		Contents saving directory	Installation time			
		Maximum size of the Contents saving directory	CustomPolicy command			
		Extended Contents saving directory	CustomPolicy command			
		Maximum size of the extended Contents saving directory	CustomPolicy command			

Client policies

MC Window Earlier Versions			V15 main menu			
Function Category	Sub-category	Item	Function Category	Main Category	Sub-category	Item
Collection condition	-	Collect files	Environment setup	Policy Groups - Basic running policy -	Set collection items	Collect files

MC Window Earlier Versions			V15 main menu			
Function Category	Sub-category	Item	Function Category	Main Category	Sub-category	Item
				Inventory information		
	-	Collect software running status	Environment setup	Policy Groups - Basic running policy - Inventory information	Set collection items	Collect software running status
	-	Collect EXE information	Environment setup	Policy Groups - Basic running policy - Inventory information	Set collection items	Collect EXE information
Collection condition - Details	-	Inventory difference collection	CustomPolicy command			
User information	-	Item	Environment setup	Option	User information	User information
Collect files	-	Collect file names	Environment setup	Policy Groups - Basic running policy - Inventory information	Set collection items	Collect files
Task plan	New confirmation setting	New confirmation interval	Environment setup	Policy Groups - Basic running policy - Common settings	New confirmation setting	Policy confirmation interval
	Confirmation chance during login	Maximum of n minutes delayed after login	Environment setup	Policy Groups - Basic running policy - Common settings	New confirmation setting	Confirmation chance during login
		Confirmation chance for the Contents from clients	CustomPolicy command			
		Confirmation chance for the security patches from clients	CustomPolicy command			
	Collection unit	-Weekly -Daily -Not collect		Environment setup	Policy Groups - Basic running policy - Inventory information	Set collection plans
Week in which Inventory is collected			Environment setup	Policy Groups - Basic running policy -	Set collection plans	Specify the day when Inventory is collected

MC Window Earlier Versions			V15 main menu			
Function Category	Sub-category	Item	Function Category	Main Category	Sub-category	Item
				Inventory information		
	Specify Inventory collection time	Specify collection time	Environment setup	Policy Groups - Basic running policy - Inventory information	Set collection plans	Specify the time segment when Inventory is collected
		Collection time	Environment setup	Policy Groups - Basic running policy - Inventory information	Set collection plans	Specify the time segment when Inventory is collected
	-	Consider CPU usage	Environment setup	Policy Groups - Basic running policy - Inventory information	Set collection plans	Inventory collection condition based on CPU usage
		Collect the Inventory information from CTs	CustomPolicy command			
Contents release	-	Automatic download server switchover	CustomPolicy command			
	New confirmation	Confirm new Contents during login	Environment setup	Policy Groups - Basic running policy - Software Distribution	Running setting during the login to the Windows	Automatically download object software
		Display notification dialog box	Environment setup	Policy Groups - Basic running policy - Software Distribution	Running setting during the login to the Windows	Automatically download object software
	Set rights	Use Admin rights during automatic download	Environment setup	Policy Groups - Basic running policy - Software Distribution	Set the right to automatically execute software after download	Specify the right of automatic execution after software download
		User name	Environment setup	Policy Groups - Basic running policy - Software Distribution	Set the right to automatically execute software after download	Specify the right of automatic execution after software download
		Password	Environment setup	Policy Groups - Basic running policy - Software Distribution	Set the right to automatically execute software after download	Specify the right of automatic execution after software download

MC Window Earlier Versions			V15 main menu			
Function Category	Sub-category	Item	Function Category	Main Category	Sub-category	Item
Proxy used for the communication with the upper server	-	Use the proxy for the communication with the upper server	Environment setup	CS/DS settings and working situation	Communication settings from the CT	User the proxy
	-	Proxy server name	Environment setup	CS/DS settings and working situation	Communication settings from the CT	Proxy server name
	-	Port number	Environment setup	CS/DS settings and working situation	Communication settings from the CT	Port number
	-	Proxy user name	Environment setup	CS/DS settings and working situation	Communication settings from the CT	User name
	-	Proxy password	Environment setup	CS/DS settings and working situation	Communication settings from the CT	Password
	-	Do not use the domain name of the proxy server	Environment setup	CS/DS settings and working situation	Communication settings from the CT	Do not use the domain name of the proxy server
Patch setting	Select the application function	Install security patches in CS/DS	Environment setup	Option	Set security patches	Install security patches in CS/DS
	Application retry setting	Application retry times	Environment setup	Policy Groups - Basic running policy - Patch Installation	Processing when patches fail to be applied	Retry times after application fails
	Patch Installation setting	Confirm and Patch new security patches during login	Environment setup	Policy Groups - Basic running policy - Patch Installation	Settings for automatic Patch Installation	Automatically Patch security patches
		Confirm and apply when powering on	Environment setup	Policy Groups - Basic running policy - Patch Installation	Settings for automatic Patch Installation	Automatically Patch security patches
		Patch security patches only when logging in to the Windows	Environment setup	Policy Groups - Basic running policy - Patch Installation	Settings for automatic Patch Installation	Automatically Patch security patches
		Specify the time segment for confirmation -Start/End	Environment setup	Policy Groups - Basic running policy - Patch Installation	Settings for automatic Patch Installation	Automatically install security patches
	Message setting - Before Patch Installation	Display messages	Environment setup	Policy Groups - Basic running policy - Patch Installation	Settings before Patch Installation	Display the message indicating that there is an

MC Window Earlier Versions			V15 main menu			
Function Category	Sub-category	Item	Function Category	Main Category	Sub-category	Item
						application security patch
		Messages before Patch Installation	Environment setup	Policy Groups - Basic running policy - Patch Installation	Settings before Patch Installation	Display the message indicating that there is an install security patch
		Display the Cancel button for application cancellation	Environment setup	Policy Groups - Basic running policy - Patch Installation	Settings before Patch Installation	Display the Cancel button for application cancellation
	Message setting - Before Patch Installation	Display messages	Environment setup	Policy Groups - Basic running policy - Patch Installation	Settings after Patch Installation	Display message after Patch Installation
		Messages after Patch Installation	Environment setup	Policy Groups - Basic running policy - Patch Installation	Settings after Patch Installation	Display message after Patch Installation
		Display the Cancel button for restart cancellation	Environment setup	Policy Groups - Basic running policy - Patch Installation	Settings after Patch Installation	Display the Cancel button for restart cancellation
		Automatically restart when countdown starts and there is no response	Environment setup	Policy Groups - Basic running policy - Patch Installation	Settings after Patch Installation	Automatically restart when countdown starts and there is no response
		Time (seconds)	Environment setup	Policy Groups - Basic running policy - Patch Installation	Settings after Patch Installation	Automatically restart when countdown starts and there is no response
		Automatically restart when no message is displayed after Patch Installation	Environment setup	Policy Groups - Basic running policy - Patch Installation	Security details settings	Automatically restart when no message is displayed after Patch Installation
		Message setting - Process for application failure	Display messages when the number of application retries exceeds the upper limit	Environment setup	Policy Groups - Basic running policy - Patch Installation	Processing when patches fail to be applied
	Display messages when the number of application		Environment setup	Policy Groups - Basic running policy - Patch Installation	Processing when patches fail to be applied	Display error messages when the number of application retries

MC Window Earlier Versions			V15 main menu			
Function Category	Sub-category	Item	Function Category	Main Category	Sub-category	Item
		retries exceeds the upper limit				exceeds the upper limit
CT environment setup	Obtain default values during installation	Obtain default values of environment setup during CT installation	Environment setup	Policy Groups - Basic running policy - Common settings	CT environment setup	Set initial values
		Obtain the default values of - User ID -PC name	Environment setup	Policy Groups - Basic running policy - Common settings	CT environment setup	Set initial values
		Obtain default values of specified items	Environment setup	Policy Groups - Basic running policy - Common settings	CT environment setup	Set initial values
		User ID	Environment setup	Policy Groups - Basic running policy - Common settings	CT environment setup	Set initial values User ID
		Digits of user ID	Environment setup	Policy Groups - Basic running policy - Common settings	CT environment setup	Set initial values Digit
		PC name	Environment setup	Policy Groups - Basic running policy - Common settings	CT environment setup	Set initial values PC name
		Digits of PC name	Environment setup	Policy Groups - Basic running policy - Common settings	CT environment setup	Set initial values Digit
		First character of the PC name	Environment setup	Policy Groups - Basic running policy - Common settings	CT environment setup	Set initial values Specify the first character of the PC name
		First character	Environment setup	Policy Groups - Basic running policy - Common settings	CT environment setup	Set initial values Specify the first character of the PC name

MC Window Earlier Versions			V15 main menu			
Function Category	Sub-category	Item	Function Category	Main Category	Sub-category	Item
		Obtain default values through specified files	CustomPolicy command			
		File name	None			
	Change restriction for environment setup	Restrict environment setting changes	Environment setup	Policy Groups - Basic running policy - Common settings	CT environment setup	Change restriction
		Allow inputting passwords to change environment setup	Environment setup	Policy Groups - Basic running policy - Common settings	CT environment setup	Change restriction Allow inputting passwords to change environment setup
		Password	Environment setup	Policy Groups - Basic running policy - Common settings	CT environment setup	Change restriction Allow inputting passwords to change environment setup
		Confirm input password	None			
		Restricted items -User ID -PC name	Environment setup	Policy Groups - Basic running policy - Common settings	CT environment setup	Change restriction
		Prompt that environment setting change is restrict during CT environment setup	CustomPolicy command			
		Prompt CT environment setup	Prompt CT environment setup	Environment setup	Policy Groups - Basic running policy - Common settings	CT environment setup
	Prompt message		Environment setup	Policy Groups - Basic running policy - Common settings	CT environment setup	The environment setting window is displayed only once during login.
	Update dates		Environment setup	Policy Groups - Basic running policy -	CT environment setup	The environment setting window is

MC Window Earlier Versions			V15 main menu			
Function Category	Sub-category	Item	Function Category	Main Category	Sub-category	Item
				Common settings		displayed only once during login. Display again.
	Display messages during environment setting	Display the message of CT environment setup	Environment setup	Policy Groups - Basic running policy - Common settings	CT environment setup	Display message
		Display messages	Environment setup	Policy Groups - Basic running policy - Common settings	CT environment setup	Display messages
Registry value collection	-	Collect item name	Environment setup	Environment setup - Policy Groups - Basic running policy - Inventory information	Registry information setting	Collect registry information
		Key name	Environment setup	Environment setup - Policy Groups - Basic running policy - Inventory information	Registry information setting	Collect registry information
		Value name	Environment setup	Environment setup - Policy Groups - Basic running policy - Inventory information	Registry information setting	Collect registry information
Stop applications	Copy application information	Copy application information	None			
	Application	File name	Environment setup	Policy Groups - Basic running policy - Common settings	Control execution files	Controlled execution files
		Actions when an application starts -Warning -Stopping	Environment setup	Policy Groups - Basic running policy - Common settings	Control execution files	Controlled execution files
		Check application installation	Environment setup	Set monitoring software	Add forbidden software	Add forbidden software
	Display messages	Warning message	Environment setup	Policy Groups - Basic running	Control execution files	Display warning message

MC Window Earlier Versions			V15 main menu			
Function Category	Sub-category	Item	Function Category	Main Category	Sub-category	Item
				policy - Common settings		
		Display forbidden enabled message	Environment setup	Policy Groups - Basic running policy - Common settings	Control execution files	Display the message when startup is forbidden
		Message	Environment setup	Policy Groups - Basic running policy - Common settings	Control execution files	Display the message when startup is forbidden
		Display check information	Environment setup	Policy Groups - Basic running policy - Common settings	Control execution files	Display the message during check
		Message	Environment setup	Policy Groups - Basic running policy - Common settings	Control execution files	Display the message during check

Contents registration window

MC Window Earlier Versions			V15 main menu			
Function Category	Sub-category	Item	Function Category	Main Category	Sub-category	Item
Software details	-	License code	None			
		Name	Software distribution	Set distribution software		Name
		Version	Software distribution	Set distribution software		Version
		Description	Software distribution	Set distribution software	Add distribution software	Description
	New software	File/folder position	Software distribution	Set distribution software	Add distribution software	File
		Downloaded execution file	Software distribution	Set distribution software	Add distribution software	Execution file

MC Window Earlier Versions			V15 main menu			
Function Category	Sub-category	Item	Function Category	Main Category	Sub-category	Item
		Object machine -Server -Client	None			
		Expiration date -Start -End	Software distribution	Set distribution software	Add distribution software	Expiration date
		Size of downloaded file	Software distribution	Set distribution software	Add distribution software	File
		Space for installation	Software distribution	Set distribution software	Add distribution software	Space for executing execution file (installation)
	Additional information	Automatically download from the CT	Software distribution	Set distribution software	Add distribution software	Download method on CT
		Time required for installation	Software distribution	Set distribution software	Add distribution software	Duration between the start time and end time for executing specified file
		Display downloaded message	Software distribution	Set distribution software	Add distribution software	Display notification message when downloading message on the software download window
		Download message	Software distribution	Set distribution software	Add distribution software	Notification message

Patch registration window

MC Window Earlier Versions			V15 main menu			
Function Category	Sub-category	Item	Function Category	Main Category	Sub-category	Item
Patch details	-	Set the registered patches as distribution objects	Software distribution	Set distribution software		
		Name	Software distribution	Set distribution software		Name
		Description	None			

MC Window Earlier Versions			V15 main menu			
Function Category	Sub-category	Item	Function Category	Main Category	Sub-category	Item
	Select download source	URL of public server	None			
		File position	Software distribution	Set distribution software	Security patch	Method of registering security patches Register the downloaded security patches
		Browse patch information	Software distribution	Set distribution software	Security patch	Details
	Download execution file	File name	None			
		Parameter	None			
		Automatically download from the CT	None			

Software Dictionary (Enterprise, local) - software license definition

MC Window Earlier Versions			V15 main menu			
Function Category	Sub-category	Item	Function Category	Main Category	Sub-category	Item
Software License definition	License information	License group	Environment setup	Set monitoring software		Software dictionary group
		License code	Environment setup	Set monitoring software		Software code
		Version	None			
		Application name	Environment setup	Set monitoring software		Name
		Version	Environment setup	Set monitoring software		Version
		Number of License resets	None			
	File Search	Enable settings	Environment setup	Set monitoring software	Add user definition	File search Search all files with the same condition
		File name	Environment setup	Set monitoring software	Add user definition	File name
	File search - details	File name	Environment setup	Set monitoring software	Add user definition	File name

MC Window Earlier Versions			V15 main menu			
Function Category	Sub-category	Item	Function Category	Main Category	Sub-category	Item
		Object -Folder -Directory	Environment setup	Set monitoring software	Add user definition	File name Folder name
		Search files according to file update time	Environment setup	Set monitoring software	Add user definition	Search files according to file update time
		Search conditions -year, month, day -equal to, from (a range), before, after	Environment setup	Set monitoring software	Add user definition	Search files according to file update time -year, month, day -equal to, from (a range), before, after
		Search files according to file size	Environment setup	Set monitoring software	Add user definition	Search files according to file size
		Size	Environment setup	Set monitoring software	Add user definition	Search files according to file size
		Search conditions -equal to, larger than, less than	Environment setup	Set monitoring software	Add user definition	Search files according to file size -equal to, larger than, less than
		Search based on version information	Environment setup	Set monitoring software	Add user definition	Search based on version information
		Search conditions -Version information -Equal to, larger than	Environment setup	Set monitoring software	Add user definition	Search based on version information -Version information -Equal to, larger than
	Registry search Information about Add or Remove Programs	Search application name	Environment setup	Set monitoring software	Add user definition	Search the information about Add or Remove Programs by application name
	Registry search	Any search key or value	Environment setup	Set monitoring software	Add user definition	Registry search

MC Window Earlier Versions			V15 main menu			
Function Category	Sub-category	Item	Function Category	Main Category	Sub-category	Item
	Any registry information					Search any key or value
		Search conditions -Key name -Key value name -Key value -Search 32-bit applications in 64-bit OS	Environment setup	Set monitoring software	Add user definition	Registry search -Key name -Key value name -In 64-bit OS
	Software running status	Object file	Environment setup	Set monitoring software	Add user definition	Software running status Specify object files
	Software running status -details	Software running status File	Environment setup	Set monitoring software	Add user definition	Software running status Object file name
		Use PE title	Environment setup	Set monitoring software	Add user definition	Software running status Use PE title/Not use PE title
	License relation definition	Enable settings	Environment setup	Set monitoring software	Add user definition	Combined conditions
	License relation definition-details	License code	Environment setup	Set monitoring software	Add user definition	Combined conditions
		Operators -AND, OR, NOT, ()	Environment setup	Set monitoring software	Add user definition	Combined conditions All conditions consistent, certain conditions consistent, included, excluded

Other items

MC Window Earlier Versions			V15 main menu			
Function Category	Sub-category	Item	Function Category	Main Category	Sub-category	Item
Software dictionary	-	Creation date of software dictionary	Environment setup	Set monitoring software		Creation date of software

MC Window Earlier Versions			V15 main menu			
Function Category	Sub-category	Item	Function Category	Main Category	Sub-category	Item
						dictionary in the support center
		Update date of software dictionary	Environment setup	Set monitoring software		Update date of software dictionary
Server list	-	Server name	Environment setup	CS/DS settings and working situation		CS/DS name
		Host name	Environment setup	CS/DS settings and working situation		Host name
		Release status	Environment setup	CS/DS settings and working situation		Setting reflection status
		Running status	Environment setup	CS/DS settings and working situation		Running status
		Error information	Environment setup	CS/DS settings and working situation		Setting reflection status