

FUJITSU Software

ServerView Resource Orchestrator

Cloud Edition V3.2.0

A decorative horizontal band with a red-to-dark-red gradient, featuring abstract white and light red curved lines and glowing points.

Quick Start Guide

Windows/Linux

J2X1-7622-07ENZ0(06)
December 2016

Preface

Purpose of This Document

This manual explains the flow of installation of FUJITSU Software ServerView Resource Orchestrator Cloud Edition (hereinafter Resource Orchestrator).

Intended Readers

This manual is written for people who will install, operate, and maintain systems using Resource Orchestrator.

Structure of This Document

This manual is composed as follows:

[Chapter 1 Resource Orchestrator Setup Procedure](#)

Explains the flow of Resource Orchestrator setup.

[Chapter 2 List of Functions Provided by the ROR Console](#)

Explains the functions provided by the ROR console.

Web Site URLs

URLs provided as reference sources within the main text are correct as of December 2016.

Document Conventions

The notation in this manual conforms to the following conventions.

- When there is different information for the different versions of Resource Orchestrator, it is indicated as follows:

[All Editions]	Sections relevant for all editions
[Cloud Edition]	Sections related to Cloud Edition
[Virtual Edition]	Sections related to Virtual Edition

- When using Resource Orchestrator and the functions necessary differ due to the necessary basic software (OS), it is indicated as follows:

[Windows Manager]	Sections related to Windows manager
[Linux Manager]	Sections related to Linux manager
[Windows]	Sections related to Windows
[Linux]	Sections related to Linux
[Red Hat Enterprise Linux]	Sections related to Red Hat Enterprise Linux
[Solaris]	Sections related to Solaris
[VMware]	Sections related to VMware
[Horizon View]	Sections related to VMware Horizon View
[Hyper-V]	Sections related to Hyper-V
[Xen]	Sections related to RHEL5-Xen
[KVM]	Sections related to RHEL-KVM
[Solaris Zones]	Sections related to Solaris Zones (Solaris 10) and Solaris Zones (Solaris 11)

[Solaris Zones (Solaris 10)]	Sections related to Solaris Zones with Solaris 10 VM hosts
[Solaris Zones (Solaris 11)]	Sections related to Solaris Zones with Solaris 11 VM hosts
[OVM for x86]	Sections related to Oracle VM Server for x86 2.2 and Oracle VM Server for x86 3.x
[OVM for x86 2.2]	Sections related to Oracle VM Server for x86 2.2
[OVM for x86 3.x]	Sections related to Oracle VM Server for x86 3.2 and Oracle VM Server for x86 3.3
[OVM for SPARC]	Sections related to Oracle VM Server for SPARC
[Citrix Xen]	Sections related to Citrix XenServer
[Physical Servers]	Sections related to physical servers

- Unless specified otherwise, the blade servers mentioned in this manual refer to PRIMERGY BX servers.
- Oracle Solaris may also be indicated as Solaris, Solaris Operating System, or Solaris OS.
- Oracle Solaris Zones may also be indicated as Solaris Containers or Solaris Container.
- Oracle VM Server for x86 may also be indicated as Oracle VM.
- In Resource Orchestrator, the following servers are referred to as SPARC Enterprise.
 - SPARC Enterprise M3000/M4000/M5000/M8000/M9000
 - SPARC Enterprise T5120/T5140/T5220/T5240/T5440
- In Resource Orchestrator, the following servers are referred to as SPARC M10.
 - SPARC M10-1/M10-4/M10-4S
- Fujitsu M10 is the product name used for SPARC M10 when they are sold outside Japan.
- References and character strings or values requiring emphasis are indicated using double quotes (").
- GUI items are shown enclosed by brackets ([]).
- The order of selecting menus is indicated using []-[].
- Text to be entered by the user is indicated using bold text.
- Variables are indicated using italic text and underscores.
- The ellipses ("...") in menu names, indicating settings and operation window startup, are not shown.
- The ">" used in Windows is included in usage examples. When using Linux, read ">" as meaning "#".
- When using Resource Orchestrator on Windows 8 and Windows Server 2012, please note the following.
When OS operations are explained in this manual, the examples assume OSs up to Windows 7 and Windows Server 2008. When using Resource Orchestrator on Windows 8 or Windows Server 2012, take explanations regarding the [Start] menu as indicating the [Apps] screen.
The [Apps] screen can be displayed by right-clicking on the [Start] screen and then right-clicking [All apps].
- When using Resource Orchestrator on Windows 8.1 and Windows Server 2012 R2, please note the following.
When OS operations are explained in this manual, the examples assume OSs up to Windows 7 and Windows Server 2008. When using Resource Orchestrator on Windows 8.1 or Windows Server 2012 R2, take explanations regarding the [Start] menu as indicating the [Apps] screen.
The [Apps] screen can be displayed by swiping the [Start] screen from bottom to top, or clicking the downward facing arrow on the lower-left of the [Start] screen.

Menus in the ROR console

Operations on the ROR console can be performed using either the menu bar or pop-up menus.

By convention, procedures described in this manual only refer to pop-up menus.

Regarding Installation Folder Paths

The installation folder path may be given as C:\Fujitsu\ROR in this manual.

Replace it as shown below.

[Virtual Edition]

- When using Windows 64-bit (x64)
C:\Program Files (x86)\Resource Orchestrator
- When using Windows 32-bit (x86)
C:\Program Files\Resource Orchestrator

[Cloud Edition]

C:\Program Files (x86)\Resource Orchestrator

Command Examples

The paths used in command examples may be abbreviated. When using commands, execute them using the paths in the "Name" column in the "Reference Guide (Command) VE" and the "Reference Guide (Command/XML) CE".

Abbreviations

The following abbreviations are used in this manual:

Abbreviation	Products
Windows	Microsoft(R) Windows Server(R) 2003 R2, Standard Edition Microsoft(R) Windows Server(R) 2003 R2, Enterprise Edition Microsoft(R) Windows Server(R) 2003 R2, Standard x64 Edition Microsoft(R) Windows Server(R) 2003 R2, Enterprise x64 Edition Microsoft(R) Windows Server(R) 2008 Standard Microsoft(R) Windows Server(R) 2008 Enterprise Microsoft(R) Windows Server(R) 2008 R2 Standard Microsoft(R) Windows Server(R) 2008 R2 Enterprise Microsoft(R) Windows Server(R) 2008 R2 Datacenter Microsoft(R) Windows Server(R) 2012 Standard Microsoft(R) Windows Server(R) 2012 Datacenter Microsoft(R) Windows Server(R) 2012 R2 Essentials Microsoft(R) Windows Server(R) 2012 R2 Standard Microsoft(R) Windows Server(R) 2012 R2 Datacenter Windows Vista(R) Business Windows Vista(R) Enterprise Windows Vista(R) Ultimate Windows(R) 7 Professional Windows(R) 7 Ultimate Windows(R) 8 Pro Windows(R) 8 Enterprise Windows(R) 8.1 Pro Windows(R) 8.1 Enterprise
Windows Server 2003	Microsoft(R) Windows Server(R) 2003 R2, Standard Edition Microsoft(R) Windows Server(R) 2003 R2, Enterprise Edition Microsoft(R) Windows Server(R) 2003 R2, Standard x64 Edition Microsoft(R) Windows Server(R) 2003 R2, Enterprise x64 Edition
Windows 2003 x64 Edition	Microsoft(R) Windows Server(R) 2003 R2, Standard x64 Edition Microsoft(R) Windows Server(R) 2003 R2, Enterprise x64 Edition

Abbreviation	Products
Windows Server 2008	Microsoft(R) Windows Server(R) 2008 Standard Microsoft(R) Windows Server(R) 2008 Enterprise Microsoft(R) Windows Server(R) 2008 R2 Standard Microsoft(R) Windows Server(R) 2008 R2 Enterprise Microsoft(R) Windows Server(R) 2008 R2 Datacenter
Windows 2008 x86 Edition	Microsoft(R) Windows Server(R) 2008 Standard (x86) Microsoft(R) Windows Server(R) 2008 Enterprise (x86)
Windows 2008 x64 Edition	Microsoft(R) Windows Server(R) 2008 Standard (x64) Microsoft(R) Windows Server(R) 2008 Enterprise (x64)
Windows Server 2012	Microsoft(R) Windows Server(R) 2012 Standard Microsoft(R) Windows Server(R) 2012 Datacenter Microsoft(R) Windows Server(R) 2012 R2 Essentials Microsoft(R) Windows Server(R) 2012 R2 Standard Microsoft(R) Windows Server(R) 2012 R2 Datacenter
Windows PE	Microsoft(R) Windows(R) Preinstallation Environment
Windows Vista	Windows Vista(R) Business Windows Vista(R) Enterprise Windows Vista(R) Ultimate
Windows 7	Windows(R) 7 Professional Windows(R) 7 Ultimate
Windows 8	Windows(R) 8 Pro Windows(R) 8 Enterprise Windows(R) 8.1 Pro Windows(R) 8.1 Enterprise
Windows 10	Windows(R) 10 Pro Windows(R) 10 Enterprise
Linux	Red Hat(R) Enterprise Linux(R) AS (v.4 for x86) Red Hat(R) Enterprise Linux(R) ES (v.4 for x86) Red Hat(R) Enterprise Linux(R) AS (v.4 for EM64T) Red Hat(R) Enterprise Linux(R) ES (v.4 for EM64T) Red Hat(R) Enterprise Linux(R) AS (4.5 for x86) Red Hat(R) Enterprise Linux(R) ES (4.5 for x86) Red Hat(R) Enterprise Linux(R) AS (4.5 for EM64T) Red Hat(R) Enterprise Linux(R) ES (4.5 for EM64T) Red Hat(R) Enterprise Linux(R) AS (4.6 for x86) Red Hat(R) Enterprise Linux(R) ES (4.6 for x86) Red Hat(R) Enterprise Linux(R) AS (4.6 for EM64T) Red Hat(R) Enterprise Linux(R) ES (4.6 for EM64T) Red Hat(R) Enterprise Linux(R) AS (4.7 for x86) Red Hat(R) Enterprise Linux(R) ES (4.7 for x86) Red Hat(R) Enterprise Linux(R) AS (4.7 for EM64T) Red Hat(R) Enterprise Linux(R) ES (4.7 for EM64T) Red Hat(R) Enterprise Linux(R) AS (4.8 for x86) Red Hat(R) Enterprise Linux(R) ES (4.8 for x86) Red Hat(R) Enterprise Linux(R) AS (4.8 for EM64T) Red Hat(R) Enterprise Linux(R) ES (4.8 for EM64T) Red Hat(R) Enterprise Linux(R) 5 (for x86) Red Hat(R) Enterprise Linux(R) 5 (for Intel64) Red Hat(R) Enterprise Linux(R) 5.1 (for x86) Red Hat(R) Enterprise Linux(R) 5.1 (for Intel64) Red Hat(R) Enterprise Linux(R) 5.2 (for x86) Red Hat(R) Enterprise Linux(R) 5.2 (for Intel64)

Abbreviation	Products
	<p>Red Hat(R) Enterprise Linux(R) 5.3 (for x86) Red Hat(R) Enterprise Linux(R) 5.3 (for Intel64) Red Hat(R) Enterprise Linux(R) 5.4 (for x86) Red Hat(R) Enterprise Linux(R) 5.4 (for Intel64) Red Hat(R) Enterprise Linux(R) 5.5 (for x86) Red Hat(R) Enterprise Linux(R) 5.5 (for Intel64) Red Hat(R) Enterprise Linux(R) 5.6 (for x86) Red Hat(R) Enterprise Linux(R) 5.6 (for Intel64) Red Hat(R) Enterprise Linux(R) 5.7 (for x86) Red Hat(R) Enterprise Linux(R) 5.7 (for Intel64) Red Hat(R) Enterprise Linux(R) 5.8 (for x86) Red Hat(R) Enterprise Linux(R) 5.8 (for Intel64) Red Hat(R) Enterprise Linux(R) 5.9 (for x86) Red Hat(R) Enterprise Linux(R) 5.9 (for Intel64) Red Hat(R) Enterprise Linux(R) 5.10 (for x86) Red Hat(R) Enterprise Linux(R) 5.10 (for Intel64) Red Hat(R) Enterprise Linux(R) 5.11 (for x86) Red Hat(R) Enterprise Linux(R) 5.11 (for Intel64) Red Hat(R) Enterprise Linux(R) 6 (for x86) Red Hat(R) Enterprise Linux(R) 6 (for Intel64) Red Hat(R) Enterprise Linux(R) 6.1 (for x86) Red Hat(R) Enterprise Linux(R) 6.1 (for Intel64) Red Hat(R) Enterprise Linux(R) 6.2 (for x86) Red Hat(R) Enterprise Linux(R) 6.2 (for Intel64) Red Hat(R) Enterprise Linux(R) 6.3 (for x86) Red Hat(R) Enterprise Linux(R) 6.3 (for Intel64) Red Hat(R) Enterprise Linux(R) 6.4 (for x86) Red Hat(R) Enterprise Linux(R) 6.4 (for Intel64) Red Hat(R) Enterprise Linux(R) 6.5 (for x86) Red Hat(R) Enterprise Linux(R) 6.5 (for Intel64) Red Hat(R) Enterprise Linux(R) 6.6 (for x86) Red Hat(R) Enterprise Linux(R) 6.6 (for Intel64) Red Hat(R) Enterprise Linux(R) 6.7 (for x86) Red Hat(R) Enterprise Linux(R) 6.7 (for Intel64) Red Hat(R) Enterprise Linux(R) 6.8 (for x86) Red Hat(R) Enterprise Linux(R) 6.8 (for Intel64) Red Hat(R) Enterprise Linux(R) 7.0 (for Intel64) SUSE(R) Linux Enterprise Server 10 Service Pack 2 for x86 SUSE(R) Linux Enterprise Server 10 Service Pack 2 for EM64T SUSE(R) Linux Enterprise Server 10 Service Pack 3 for x86 SUSE(R) Linux Enterprise Server 10 Service Pack 3 for EM64T SUSE(R) Linux Enterprise Server 11 for x86 SUSE(R) Linux Enterprise Server 11 for EM64T SUSE(R) Linux Enterprise Server 11 Service Pack 1 for x86 SUSE(R) Linux Enterprise Server 11 Service Pack 1 for EM64T Oracle Enterprise Linux Release 6.7 for x86 (32bit) Oracle Enterprise Linux Release 6.7 for 86_64 (64bit) Oracle Enterprise Linux Release 7.2 for x86 (32bit) Oracle Enterprise Linux Release 7.2 for x86_64 (64bit)</p>
Red Hat Enterprise Linux	<p>Red Hat(R) Enterprise Linux(R) AS (v.4 for x86) Red Hat(R) Enterprise Linux(R) ES (v.4 for x86) Red Hat(R) Enterprise Linux(R) AS (v.4 for EM64T) Red Hat(R) Enterprise Linux(R) ES (v.4 for EM64T) Red Hat(R) Enterprise Linux(R) AS (4.5 for x86) Red Hat(R) Enterprise Linux(R) ES (4.5 for x86) Red Hat(R) Enterprise Linux(R) AS (4.5 for EM64T)</p>

Abbreviation	Products
	Red Hat(R) Enterprise Linux(R) ES (4.5 for EM64T)
	Red Hat(R) Enterprise Linux(R) AS (4.6 for x86)
	Red Hat(R) Enterprise Linux(R) ES (4.6 for x86)
	Red Hat(R) Enterprise Linux(R) AS (4.6 for EM64T)
	Red Hat(R) Enterprise Linux(R) ES (4.6 for EM64T)
	Red Hat(R) Enterprise Linux(R) AS (4.7 for x86)
	Red Hat(R) Enterprise Linux(R) ES (4.7 for x86)
	Red Hat(R) Enterprise Linux(R) AS (4.7 for EM64T)
	Red Hat(R) Enterprise Linux(R) ES (4.7 for EM64T)
	Red Hat(R) Enterprise Linux(R) AS (4.8 for x86)
	Red Hat(R) Enterprise Linux(R) ES (4.8 for x86)
	Red Hat(R) Enterprise Linux(R) AS (4.8 for EM64T)
	Red Hat(R) Enterprise Linux(R) ES (4.8 for EM64T)
	Red Hat(R) Enterprise Linux(R) 5 (for x86)
	Red Hat(R) Enterprise Linux(R) 5 (for Intel64)
	Red Hat(R) Enterprise Linux(R) 5.1 (for x86)
	Red Hat(R) Enterprise Linux(R) 5.1 (for Intel64)
	Red Hat(R) Enterprise Linux(R) 5.2 (for x86)
	Red Hat(R) Enterprise Linux(R) 5.2 (for Intel64)
	Red Hat(R) Enterprise Linux(R) 5.3 (for x86)
	Red Hat(R) Enterprise Linux(R) 5.3 (for Intel64)
	Red Hat(R) Enterprise Linux(R) 5.4 (for x86)
	Red Hat(R) Enterprise Linux(R) 5.4 (for Intel64)
	Red Hat(R) Enterprise Linux(R) 5.5 (for x86)
	Red Hat(R) Enterprise Linux(R) 5.5 (for Intel64)
	Red Hat(R) Enterprise Linux(R) 5.6 (for x86)
	Red Hat(R) Enterprise Linux(R) 5.6 (for Intel64)
	Red Hat(R) Enterprise Linux(R) 5.7 (for x86)
	Red Hat(R) Enterprise Linux(R) 5.7 (for Intel64)
	Red Hat(R) Enterprise Linux(R) 5.8 (for x86)
	Red Hat(R) Enterprise Linux(R) 5.8 (for Intel64)
	Red Hat(R) Enterprise Linux(R) 5.9 (for x86)
	Red Hat(R) Enterprise Linux(R) 5.9 (for Intel64)
	Red Hat(R) Enterprise Linux(R) 5.10 (for x86)
	Red Hat(R) Enterprise Linux(R) 5.10 (for Intel64)
	Red Hat(R) Enterprise Linux(R) 5.11 (for x86)
	Red Hat(R) Enterprise Linux(R) 5.11 (for Intel64)
	Red Hat(R) Enterprise Linux(R) 6 (for x86)
	Red Hat(R) Enterprise Linux(R) 6 (for Intel64)
	Red Hat(R) Enterprise Linux(R) 6.1 (for x86)
	Red Hat(R) Enterprise Linux(R) 6.1 (for Intel64)
	Red Hat(R) Enterprise Linux(R) 6.2 (for x86)
	Red Hat(R) Enterprise Linux(R) 6.2 (for Intel64)
	Red Hat(R) Enterprise Linux(R) 6.3 (for x86)
	Red Hat(R) Enterprise Linux(R) 6.3 (for Intel64)
	Red Hat(R) Enterprise Linux(R) 6.4 (for x86)
	Red Hat(R) Enterprise Linux(R) 6.4 (for Intel64)
	Red Hat(R) Enterprise Linux(R) 6.5 (for x86)
	Red Hat(R) Enterprise Linux(R) 6.5 (for Intel64)
	Red Hat(R) Enterprise Linux(R) 6.6 (for x86)
	Red Hat(R) Enterprise Linux(R) 6.6 (for Intel64)
	Red Hat(R) Enterprise Linux(R) 6.7 (for x86)
	Red Hat(R) Enterprise Linux(R) 6.7 (for Intel64)
	Red Hat(R) Enterprise Linux(R) 6.8 (for x86)
	Red Hat(R) Enterprise Linux(R) 6.8 (for Intel64)
	Red Hat(R) Enterprise Linux(R) 7.0 (for Intel64)

Abbreviation	Products
Red Hat Enterprise Linux 5	Red Hat(R) Enterprise Linux(R) 5 (for x86) Red Hat(R) Enterprise Linux(R) 5 (for Intel64) Red Hat(R) Enterprise Linux(R) 5.1 (for x86) Red Hat(R) Enterprise Linux(R) 5.1 (for Intel64) Red Hat(R) Enterprise Linux(R) 5.2 (for x86) Red Hat(R) Enterprise Linux(R) 5.2 (for Intel64) Red Hat(R) Enterprise Linux(R) 5.3 (for x86) Red Hat(R) Enterprise Linux(R) 5.3 (for Intel64) Red Hat(R) Enterprise Linux(R) 5.4 (for x86) Red Hat(R) Enterprise Linux(R) 5.4 (for Intel64) Red Hat(R) Enterprise Linux(R) 5.5 (for x86) Red Hat(R) Enterprise Linux(R) 5.5 (for Intel64) Red Hat(R) Enterprise Linux(R) 5.6 (for x86) Red Hat(R) Enterprise Linux(R) 5.6 (for Intel64) Red Hat(R) Enterprise Linux(R) 5.7 (for x86) Red Hat(R) Enterprise Linux(R) 5.7 (for Intel64) Red Hat(R) Enterprise Linux(R) 5.8 (for x86) Red Hat(R) Enterprise Linux(R) 5.8 (for Intel64) Red Hat(R) Enterprise Linux(R) 5.9 (for x86) Red Hat(R) Enterprise Linux(R) 5.9 (for Intel64) Red Hat(R) Enterprise Linux(R) 5.10 (for x86) Red Hat(R) Enterprise Linux(R) 5.10 (for Intel64) Red Hat(R) Enterprise Linux(R) 5.11 (for x86) Red Hat(R) Enterprise Linux(R) 5.11 (for Intel64)
Red Hat Enterprise Linux 6	Red Hat(R) Enterprise Linux(R) 6 (for x86) Red Hat(R) Enterprise Linux(R) 6 (for Intel64) Red Hat(R) Enterprise Linux(R) 6.1 (for x86) Red Hat(R) Enterprise Linux(R) 6.1 (for Intel64) Red Hat(R) Enterprise Linux(R) 6.2 (for x86) Red Hat(R) Enterprise Linux(R) 6.2 (for Intel64) Red Hat(R) Enterprise Linux(R) 6.3 (for x86) Red Hat(R) Enterprise Linux(R) 6.3 (for Intel64) Red Hat(R) Enterprise Linux(R) 6.4 (for x86) Red Hat(R) Enterprise Linux(R) 6.4 (for Intel64) Red Hat(R) Enterprise Linux(R) 6.5 (for x86) Red Hat(R) Enterprise Linux(R) 6.5 (for Intel64) Red Hat(R) Enterprise Linux(R) 6.6 (for x86) Red Hat(R) Enterprise Linux(R) 6.6 (for Intel64) Red Hat(R) Enterprise Linux(R) 6.7 (for x86) Red Hat(R) Enterprise Linux(R) 6.7 (for Intel64) Red Hat(R) Enterprise Linux(R) 6.8 (for x86) Red Hat(R) Enterprise Linux(R) 6.8 (for Intel64)
Red Hat Enterprise Linux 7	Red Hat(R) Enterprise Linux(R) 7.0 (for Intel64)
RHEL5-Xen	Red Hat(R) Enterprise Linux(R) 5.4 (for x86) Linux Virtual Machine Function Red Hat(R) Enterprise Linux(R) 5.4 (for Intel64) Linux Virtual Machine Function
RHEL-KVM	Red Hat(R) Enterprise Linux(R) 6.1 (for x86) Virtual Machine Function Red Hat(R) Enterprise Linux(R) 6.1 (for Intel64) Virtual Machine Function Red Hat(R) Enterprise Linux(R) 6.2 (for x86) Virtual Machine Function Red Hat(R) Enterprise Linux(R) 6.2 (for Intel64) Virtual Machine Function

Abbreviation	Products
	Function Red Hat(R) Enterprise Linux(R) 6.3 (for x86) Virtual Machine Function Red Hat(R) Enterprise Linux(R) 6.3 (for Intel64) Virtual Machine Function Red Hat(R) Enterprise Linux(R) 6.4 (for x86) Virtual Machine Function Red Hat(R) Enterprise Linux(R) 6.4 (for Intel64) Virtual Machine Function Red Hat(R) Enterprise Linux(R) 6.5 (for x86) Virtual Machine Function Red Hat(R) Enterprise Linux(R) 6.5 (for Intel64) Virtual Machine Function Red Hat(R) Enterprise Linux(R) 6.6 (for x86) Virtual Machine Function Red Hat(R) Enterprise Linux(R) 6.6 (for Intel64) Virtual Machine Function Red Hat(R) Enterprise Linux(R) 6.7 (for x86) Virtual Machine Function Red Hat(R) Enterprise Linux(R) 6.7 (for Intel64) Virtual Machine Function Red Hat(R) Enterprise Linux(R) 6.8 (for x86) Virtual Machine Function Red Hat(R) Enterprise Linux(R) 6.8 (for Intel64) Virtual Machine Function
Xen	Citrix XenServer(R) 5.5 Citrix Essentials(TM) for XenServer 5.5, Enterprise Edition Citrix XenServer(R) 6.0 Citrix Essentials(TM) for XenServer 6.0, Enterprise Edition Red Hat(R) Enterprise Linux(R) 5.3 (for x86) Linux Virtual Machine Function Red Hat(R) Enterprise Linux(R) 5.3 (for Intel64) Linux Virtual Machine Function Red Hat(R) Enterprise Linux(R) 5.4 (for x86) Linux Virtual Machine Function Red Hat(R) Enterprise Linux(R) 5.4 (for Intel64) Linux Virtual Machine Function Red Hat(R) Enterprise Linux(R) 5.5 (for x86) Linux Virtual Machine Function Red Hat(R) Enterprise Linux(R) 5.5 (for Intel64) Linux Virtual Machine Function Red Hat(R) Enterprise Linux(R) 5.6 (for x86) Linux Virtual Machine Function Red Hat(R) Enterprise Linux(R) 5.6 (for Intel64) Linux Virtual Machine Function Red Hat(R) Enterprise Linux(R) 5.7 (for x86) Linux Virtual Machine Function Red Hat(R) Enterprise Linux(R) 5.7 (for Intel64) Linux Virtual Machine Function Red Hat(R) Enterprise Linux(R) 5.8 (for x86) Linux Virtual Machine Function Red Hat(R) Enterprise Linux(R) 5.8 (for Intel64) Linux Virtual Machine Function Red Hat(R) Enterprise Linux(R) 5.9 (for x86) Linux Virtual Machine Function Red Hat(R) Enterprise Linux(R) 5.9 (for Intel64) Linux Virtual

Abbreviation		Products
		Machine Function Red Hat(R) Enterprise Linux(R) 5.10 (for x86) Linux Virtual Machine Function Red Hat(R) Enterprise Linux(R) 5.10 (for Intel64) Linux Virtual Machine Function Red Hat(R) Enterprise Linux(R) 5.11 (for x86) Linux Virtual Machine Function Red Hat(R) Enterprise Linux(R) 5.11 (for Intel64) Linux Virtual Machine Function
XenServer 6		Citrix XenServer(R) 6.0 Citrix Essentials(TM) for XenServer 6.0, Enterprise Edition
DOS		Microsoft(R) MS-DOS(R) operating system, DR DOS(R)
SUSE Linux Enterprise Server		SUSE(R) Linux Enterprise Server 10 Service Pack 2 for x86 SUSE(R) Linux Enterprise Server 10 Service Pack 2 for EM64T SUSE(R) Linux Enterprise Server 10 Service Pack 3 for x86 SUSE(R) Linux Enterprise Server 10 Service Pack 3 for EM64T SUSE(R) Linux Enterprise Server 11 for x86 SUSE(R) Linux Enterprise Server 11 for EM64T SUSE(R) Linux Enterprise Server 11 Service Pack 1 for x86 SUSE(R) Linux Enterprise Server 11 Service Pack 1 for EM64T
Oracle Enterprise Linux		Oracle Enterprise Linux Release 6.7 for x86 (32bit) Oracle Enterprise Linux Release 6.7 for 86_64 (64bit) Oracle Enterprise Linux Release 7.2 for x86 (32bit) Oracle Enterprise Linux Release 7.2 for x86_64 (64bit)
Solaris		Oracle Solaris 10 05/09 (Update7) Oracle Solaris 11 11/11 Oracle Solaris 11.1 Oracle Solaris 11.2
OVM for x86 2.2		Oracle(R) VM Server for x86 2.2
OVM for x86 3.x	OVM for x86 3.2	Oracle VM Server for x86 v3.2.x
	OVM for x86 3.3	Oracle VM Server for x86 v3.3.x
OVM for SPARC		Oracle(R) VM Server for SPARC
Oracle VM Manager		Oracle(R) VM Manager
Citrix XenServer		Citrix XenServer(R) 6.0 Citrix XenServer(R) 6.0.2 Citrix XenServer(R) 6.1.0 Citrix XenServer(R) 6.2.0
ESC		ETERNUS SF Storage Cruiser
GLS		PRIMECLUSTER GLS
Navisphere		EMC Navisphere Manager
Solutions Enabler		EMC Solutions Enabler
MSFC		Microsoft Failover Cluster
Solaris		Oracle Solaris 10 05/09 (Update7) Oracle Solaris 11 11/11 Oracle Solaris 11.1 Oracle Solaris 11.2

Abbreviation	Products
SCVMM	System Center Virtual Machine Manager 2008 R2 System Center 2012 Virtual Machine Manager System Center 2012 R2 Virtual Machine Manager
VMware	VMware vSphere(R) 4 VMware vSphere(R) 4.1 VMware vSphere(R) 5 VMware vSphere(R) 5.1 VMware vSphere(R) 5.5 VMware vSphere(R) 6
VMware ESX	VMware(R) ESX(R)
VMware ESX 4	VMware(R) ESX(R) 4
VMware ESXi	VMware(R) ESXi(TM)
VMware ESXi 5.0	VMware(R) ESXi(TM) 5.0
VMware ESXi 5.1	VMware(R) ESXi(TM) 5.1
VMware ESXi 5.5	VMware(R) ESXi(TM) 5.5
VMware ESXi 6.0	VMware(R) ESXi(TM) 6.0
VMware Infrastructure Client	VMware(R) Infrastructure Client
VMware Tools	VMware(R) Tools
VMware vSphere 4.0	VMware vSphere(R) 4.0
VMware vSphere 4.1	VMware vSphere(R) 4.1
VMware vSphere 5	VMware vSphere(R) 5
VMware vSphere 5.1	VMware vSphere(R) 5.1
VMware vSphere 5.5	VMware vSphere(R) 5.5
VMware vSphere 6.0	VMware vSphere(R) 6.0
VMware vSphere Client	VMware vSphere(R) Client
VMware vCenter Server	VMware(R) vCenter(TM) Server
VMware vClient	VMware(R) vClient(TM)
VMware FT	VMware(R) Fault Tolerance
VMware DRS	VMware(R) Distributed Resource Scheduler
VMware DPM	VMware(R) Distributed Power Management
VMware Storage VMotion	VMware(R) Storage VMotion
VMware vDS	VMware(R) vNetwork Distributed Switch
VMware Horizon View	VMware Horizon View 5.2.x VMware Horizon View 5.3.x VMware Horizon 6.0 (with View)
VMware Virtual SAN	VMware(R) Virtual SAN(TM)
VIOM	ServerView Virtual-IO Manager
SVOM	ServerView Operations Manager
BladeLogic	BMC BladeLogic Server Automation
Excel	Microsoft(R) Office Excel(R) 2003 Microsoft(R) Office Excel(R) 2007 Microsoft(R) Office Excel(R) 2010 Microsoft(R) Office Excel(R) 2013

Abbreviation	Products
Excel 2003	Microsoft(R) Office Excel(R) 2003
Excel 2007	Microsoft(R) Office Excel(R) 2007
Excel 2010	Microsoft(R) Office Excel(R) 2010
Excel 2013	Microsoft(R) Office Excel(R) 2013
Internet Explorer	Windows(R) Internet Explorer(R) 8 Windows(R) Internet Explorer(R) 9 Windows(R) Internet Explorer(R) 10 Internet Explorer(R) 11
Firefox	Firefox(R)
ServerView Agent	ServerView SNMP Agents for MS Windows (32bit-64bit) ServerView Agents Linux ServerView Agents VMware for VMware ESX Server
RCVE	ServerView Resource Coordinator VE
ROR	FUJITSU Software ServerView Resource Orchestrator
ROR VE	FUJITSU Software ServerView Resource Orchestrator Virtual Edition
ROR CE	FUJITSU Software ServerView Resource Orchestrator Cloud Edition
Resource Coordinator	Systemwalker Resource Coordinator Systemwalker Resource Coordinator Virtual server Edition
Resource Coordinator VE	ServerView Resource Coordinator VE Systemwalker Resource Coordinator Virtual server Edition
Resource Orchestrator	FUJITSU Software ServerView Resource Orchestrator
SVFAB	ServerView Fabric Manager

Export Administration Regulation Declaration

Exportation/release of this document may require necessary procedures in accordance with the regulations of your resident country and/or US export control laws.

Trademark Information

- BMC, BMC Software, and the BMC Software logo are the exclusive properties of BMC Software, Inc., are registered with the U.S. Patent and Trademark Office, and may be registered or pending registration in other countries.
- Citrix(R), Citrix XenServer(R), Citrix Essentials(TM), and Citrix StorageLink(TM) are trademarks of Citrix Systems, Inc. and/or one of its subsidiaries, and may be registered in the United States Patent and Trademark Office and in other countries.
- EMC, EMC², CLARiiON, Symmetrix, and Navisphere are trademarks or registered trademarks of EMC Corporation.
- HP is a registered trademark of Hewlett-Packard Company.
- Linux is a trademark or registered trademark of Linus Torvalds in the United States and other countries.
- Microsoft, Windows, MS-DOS, Windows Server, Windows Vista, Excel, Active Directory, and Internet Explorer are either registered trademarks or trademarks of Microsoft Corporation in the United States and other countries.
- Firefox is a trademark or registered trademark of the Mozilla Foundation in the United States and other countries.
- NetApp is a registered trademark of Network Appliance, Inc. in the US and other countries. Data ONTAP, Network Appliance, and Snapshot are trademarks of Network Appliance, Inc. in the US and other countries.
- Oracle and Java are registered trademarks of Oracle and/or its affiliates in the United States and other countries.

- Oracle is a registered trademark of Oracle Corporation and/or its affiliates.
- Red Hat, RPM and all Red Hat-based trademarks and logos are trademarks or registered trademarks of Red Hat, Inc. in the United States and other countries.
- SUSE is a registered trademark of SUSE LINUX AG, a Novell business.
- VMware, the VMware "boxes" logo and design, Virtual SMP, and VMotion are registered trademarks or trademarks of VMware, Inc. in the United States and/or other jurisdictions.
- ServerView and Systemwalker are registered trademarks of FUJITSU LIMITED.
- All other brand and product names are trademarks or registered trademarks of their respective owners.

Notices

- The contents of this manual shall not be reproduced without express written permission from FUJITSU LIMITED.
- The contents of this manual are subject to change without notice.

Revision History

Month/Year Issued, Edition	Manual Code
November 2011, First Edition	J2X1-7622-01ENZ0(00)
February 2011, Edition 1.1	J2X1-7622-01ENZ0(01)
July 2012, Second Edition	J2X1-7622-02ENZ0(00)
October 2012, Third Edition	J2X1-7622-03ENZ0(00)
December 2012, Fourth Edition	J2X1-7622-04ENZ0(00)
January 2013, Fifth Edition	J2X1-7622-05ENZ0(00)
June 2013, Edition 5.1	J2X1-7622-05ENZ0(01)
August 2013, Edition 5.2	J2X1-7622-05ENZ0(02)
December 2013, Sixth Edition	J2X1-7622-06ENZ0(00)
June 2014, Edition 6.1	J2X1-7622-06ENZ0(01)
April 2015, Seventh Edition	J2X1-7622-07ENZ0(00)
July 2015, Edition 7.1	J2X1-7622-07ENZ0(01)
December 2015, Edition 7.2	J2X1-7622-07ENZ0(02)
January 2016, Edition 7.3	J2X1-7622-07ENZ0(03)
June 2016, Edition 7.4	J2X1-7622-07ENZ0(04)
September 2016, Edition 7.5	J2X1-7622-07ENZ0(05)
December 2016, Edition 7.6	J2X1-7622-07ENZ0(06)

Copyright

Copyright 2011-2016 FUJITSU LIMITED

Contents

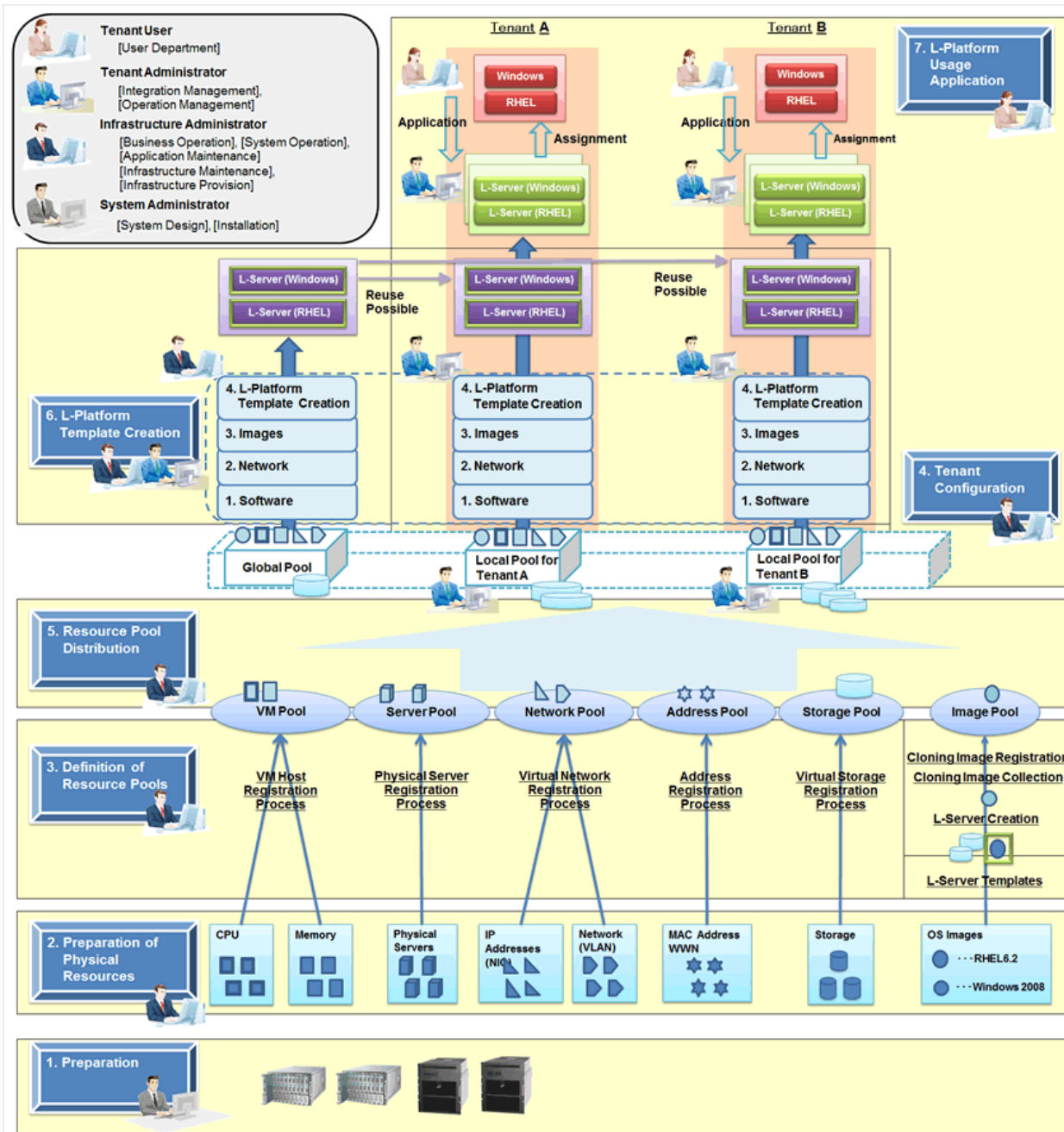
Chapter 1 Resource Orchestrator Setup Procedure.....	1
1.1 Preparations.....	2
1.2 Preparing Physical Resources.....	2
1.3 Executing Resource Pool Creation.....	3
1.4 Configuring Tenants.....	5
1.5 Distributing Resource Pools.....	5
1.6 Creating L-Platform Templates.....	5
1.7 Applying for L-Platform Usage.....	6
Chapter 2 List of Functions Provided by the ROR Console.....	7

Chapter 1 Resource Orchestrator Setup Procedure

This chapter explains the setup flow of Resource Orchestrator.

The setup flow of Resource Orchestrator is as follows:

Figure 1.1 Resource Orchestrator Setup Procedure



For details on the user roles in Resource Orchestrator, refer to "Chapter 4 User Roles in Resource Orchestrator [Cloud Edition]" in the "Overview".

For details on the ROR console, refer to "Chapter 2 List of Functions Provided by the ROR Console".

Table 1.1 Resource Orchestrator Setup Procedure

Number	Item	Operator	Tabs Used on the ROR Console
1	Preparations	System administrators	Account

Number	Item	Operator	Tabs Used on the ROR Console
2	Preparing Physical Resources	Infrastructure administrator	Resource
3	Executing Resource Pool Creation	Infrastructure administrator	Resource
4	Configuring Tenants	Infrastructure administrator	Tenant
5	Distributing Resource Pools	Infrastructure administrator	Resource
6	Creating L-Platform Templates	Infrastructure administrator Tenant administrator	Template
7	Applying for L-Platform Usage	Tenant user	Request L-Platform

1.1 Preparations

1. Design and Pre-configuration

Perform the design and pre-configuration necessary to use Resource Orchestrator.

Refer to the "Design Guide CE".

2. Resource Orchestrator Manager Installation and Configuration

Install the manager of Resource Orchestrator on an admin server.

For details on how to install and configure the manager, refer to the following:

- "2.1 Manager Installation" in the "Setup Guide CE"
- "Chapter 3 SSL Communication Environment Settings for the ROR Console" in the "Setup Guide CE"
- "Chapter 2 Login and Logout" in the "User's Guide for Infrastructure Administrators CE"
- "Chapter 4 License Setup and Confirmation" in the "Setup Guide CE"
- "Chapter 5 Importing a Certificate to a Browser" in the "Setup Guide CE"
- "3.1 Registering User Accounts" in the "User's Guide for Infrastructure Administrators (Resource Management) CE"
- "Appendix G Definition Files" in the "Setup Guide CE"

3. Install Agents on VM Hosts

Install Resource Orchestrator agents, after installing software on the VM host.

For details on installing agents, refer to the following in the "Setup Guide CE".

- "2.2 Agent Installation"
- "2.3 Agent (Dashboard Function) Installation"

4. Install HBA address rename Service Servers

Install HBA address rename service servers.

Refer to "2.4 HBA address rename setup service Installation" in the "Setup Guide CE".

1.2 Preparing Physical Resources

Prepare physical resources.

Register resources with Resource Orchestrator. Use the [Resource] tab in the ROR console to register resources.

For details, refer to the following:

- "Chapter 5 Registering Resources" in the "User's Guide for Infrastructure Administrators (Resource Management) CE"
- "Chapter 6 Settings for the HBA address rename Setup Service" in the "Setup Guide CE"

1.3 Executing Resource Pool Creation

Execute resource pool creation.

There are the two following types of resource pools.

Table 1.2 Resource Pool Type

Resource Pool Type	Description
Global Pools	A resource pool shared among all tenants. When the manager of Resource Orchestrator is installed, this resource pool is automatically created.
Local Pools	A resource pool which can only be used by a specific tenant. When creating a tenant, a local pool dedicated to the tenant is automatically created.

Figure 1.2 Global Pools

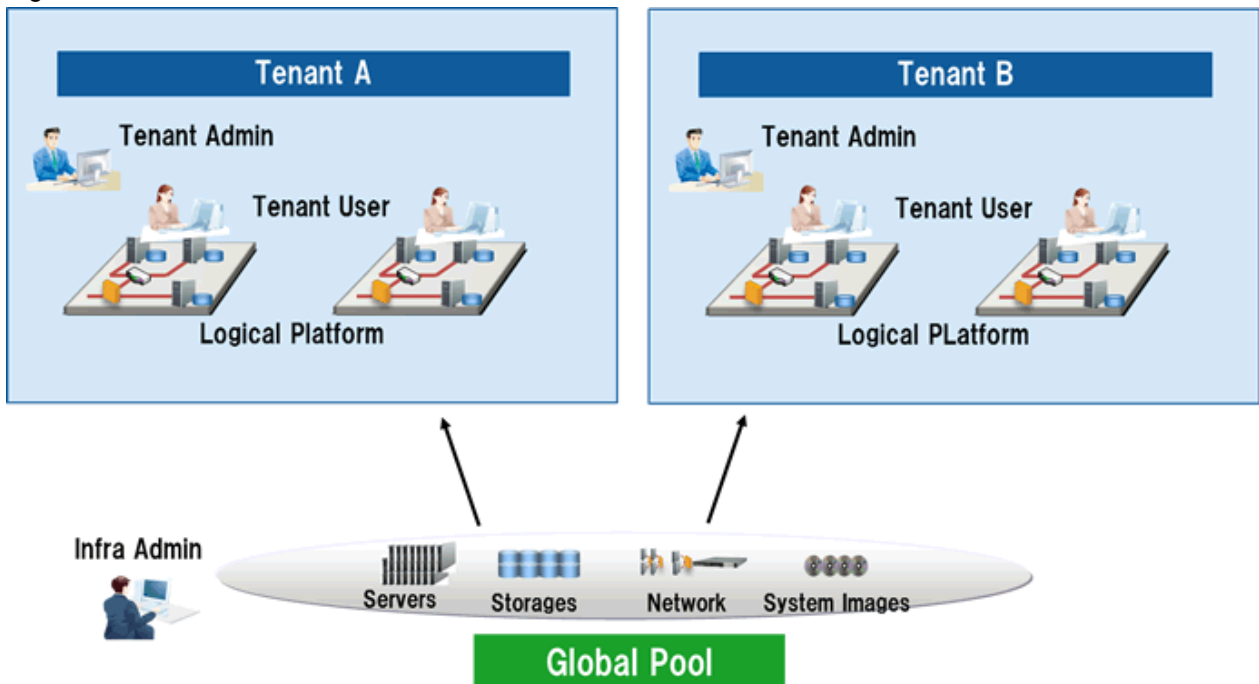
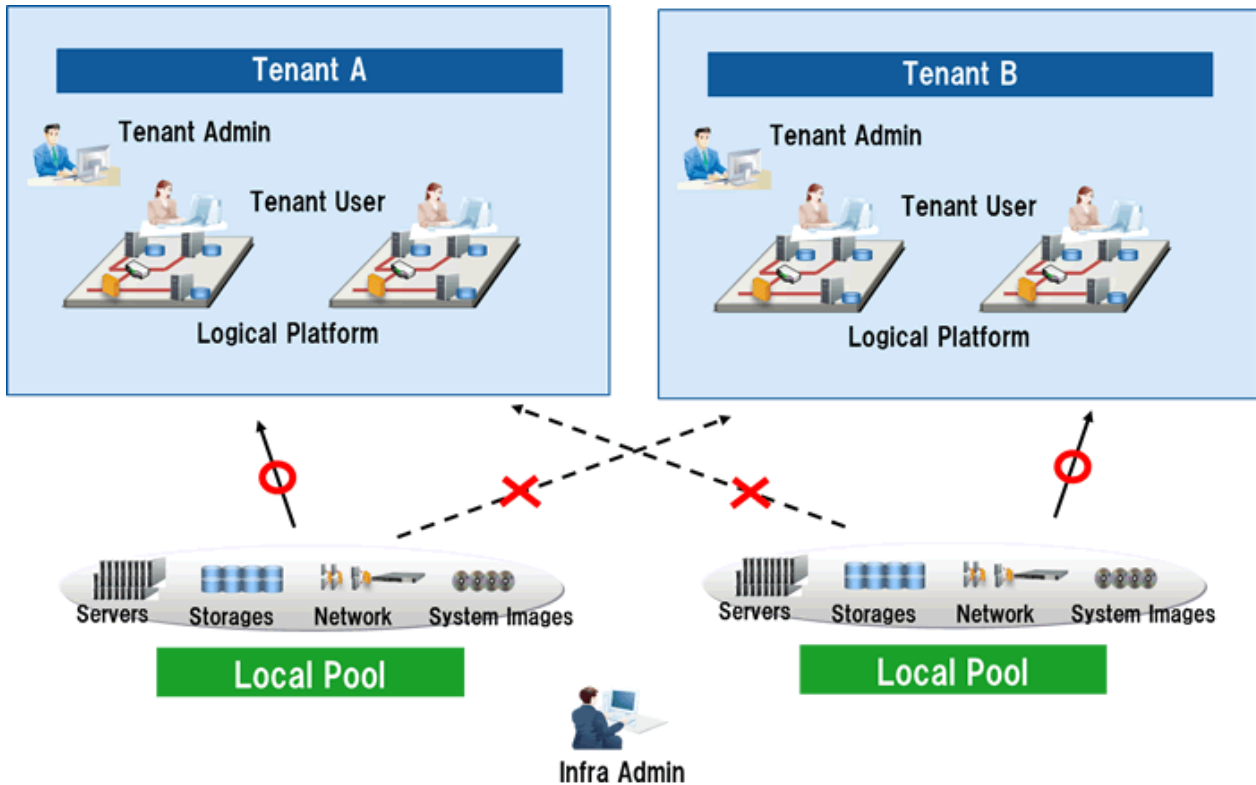


Figure 1.3 Local Pools



Point

Using a Global Pool and a Local Pool in Combination

A global pool and a local pool can be used in combination.

For details on how to select resource pools depending on the resource types, refer to "Chapter 6 Defining Tenants and Resource Pools" in the "Design Guide CE".

1. Register Resources to the Global Pool

Register resources which have been registered in Resource Orchestrator to the global pool so they can be shared with other tenants.

The target resources are as follow:

- VM Pool
- Server Pool
- Storage Pool
- Network Pool
- Address Pool

For details, refer to "Chapter 14 Registering Resources in Resource Pools" in the "User's Guide for Infrastructure Administrators (Resource Management) CE".

2. Create an L-Server Template

Create an L-Server template.

For details, refer to "Chapter 15 L-Server Template Operations" in the "User's Guide for Infrastructure Administrators (Resource Management) CE".

3. Create an L-Server for the Infrastructure Administrator

Create L-Servers for infrastructure administrators in order to collect cloning images.

A cloning image is an image, excluding server specific information (system node names, IP addresses, etc.), collected from the system disk.

An L-Server for infrastructure administrators is an L-Server that can only be used by infrastructure administrators, not by tenant administrators or tenant users.

Standard L-Servers can only be used by tenants administrators and tenant users.

For details, refer to "Chapter 16 Creating L-Servers" in the "User's Guide for Infrastructure Administrators (Resource Management) CE".

4. Collect and Register Cloning Images

Collect cloning images, and register them in the image pool.

For details, refer to "17.5.1 Collecting and Registering" in the "User's Guide for Infrastructure Administrators (Resource Management) CE".

1.4 Configuring Tenants

1. Create Tenants

Create tenants.

For details, refer to "11.3 Creating a Tenant" in the "User's Guide for Infrastructure Administrators CE".

2. Create Tenant Administrators

Create tenant administrators.

For details, refer to "11.7 Registering a User" in the "User's Guide for Infrastructure Administrators CE".

1.5 Distributing Resource Pools

When using a local pool, register resources to the local pool.

For details, refer to "Chapter 14 Registering Resources in Resource Pools" in the "User's Guide for Infrastructure Administrators (Resource Management) CE".

1.6 Creating L-Platform Templates

Create an L-Platform template.

An L-Platform template consists of the following:

- Template Information
- Segment Information
- Image Information
- Software Information

There are two following types of L-Platform templates.

Types of L-Platform Templates	Description	Creator
Global template	An L-Platform template shared with all tenants.	Infrastructure administrator

Types of L-Platform Templates	Description	Creator
	Infrastructure administrators create global templates, and release them to tenant administrators.	
Template specific to a tenant	<p>An L-Platform template which can only be used by a specific tenant.</p> <p>Tenant administrators edit the template specific to the tenant based on the global template.</p> <p>Tenant administrators create templates specific to a tenant, and release them to tenant users.</p>	Tenant administrator

Create L-Platform templates in the [Template] tab of the ROR console.

For details on how to create global templates, refer to "Chapter 8 Template" in the "User's Guide for Infrastructure Administrators CE".

For details on how to create templates specific to a tenant, refer to "Chapter 7 Template" in the "User's Guide for Tenant Administrators CE".

1.7 Applying for L-Platform Usage

1. Apply for L-Platform Usage

The tenant user applies to use an L-Platform.

Apply for L-Platform usage from the [L-Platform] tab of the ROR console.

For details, refer to "5.2 Subscribe to an L-Platform" in the "User's Guide for Tenant Users CE".

2. Use L-Platforms

Tenant users configure business applications using deployed L-Platforms.

Access the deployed L-Platforms using remote desktop functions.

For details, refer to "5.6 How to Use the L-Platform" in the "User's Guide for Tenant Users CE".

Chapter 2 List of Functions Provided by the ROR Console

This chapter explains the functions provided by the ROR console.

The ROR Console provides the two following types of windows.

- Windows intended for tenant administrators and tenant users

Windows intended for tenant administrators and tenant users are provided for L-Platform and user information operations.

These windows are configured by tenant administrators themselves, and have been provided to reduce the infrastructure administrator workload.

- Windows intended for infrastructure administrators

Operation windows and dashboard windows intended for infrastructure administrators are also provided for L-Platform and user information operations.

These windows are provided to enable infrastructure administrators to display and operate all L-Platform and tenant information and to access important information quickly.

Using the ROR console, the appropriate functions can be provided to each user, by changing the display depending on user roles.

The windows for functions that cannot be operated by the relevant role are not displayed.

List of ROR Console Functions

The table below shows relationships between the functions provided by the ROR Console and users.

Table 2.1 Relationships between Functions Provided by the ROR Console and Users

Function	Infrastructure Administrator	Tenant Administrator	Tenant Users
Home	Yes	Yes	Yes
Dashboard (Pool Conditions)	Yes	Yes	-
Dashboard (System Conditions)	Yes	Yes	Yes
Dashboard (Capacity Planning)	Yes	Yes	-
Resource	Yes	-	-
Template	Yes	Yes	-
L-Platform	Yes	Yes	Yes
Request	Yes	Yes	Yes
Tenant	Yes	Yes	-
Usage Charges	Yes	Yes	-
Account	Yes	Yes	Yes
Option	Yes	Yes	Yes
Help	Yes	Yes	Yes

Yes: Displayed (Some functions are not displayed depending on the possessed user privileges.)

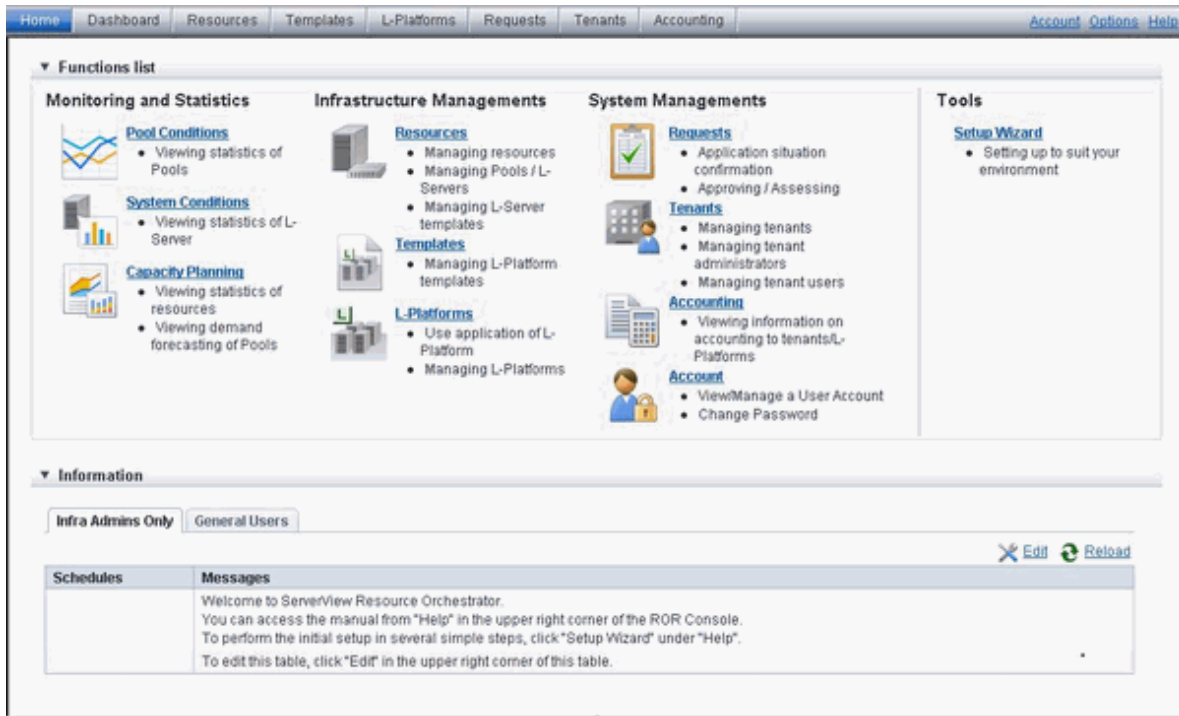
For details on privileges, refer to "5.1 Restricting Access Using Roles" in the "Design Guide CE".

-.: Hidden

Home

The window displayed immediately after login to the ROR Console. A function list and notifications are displayed.

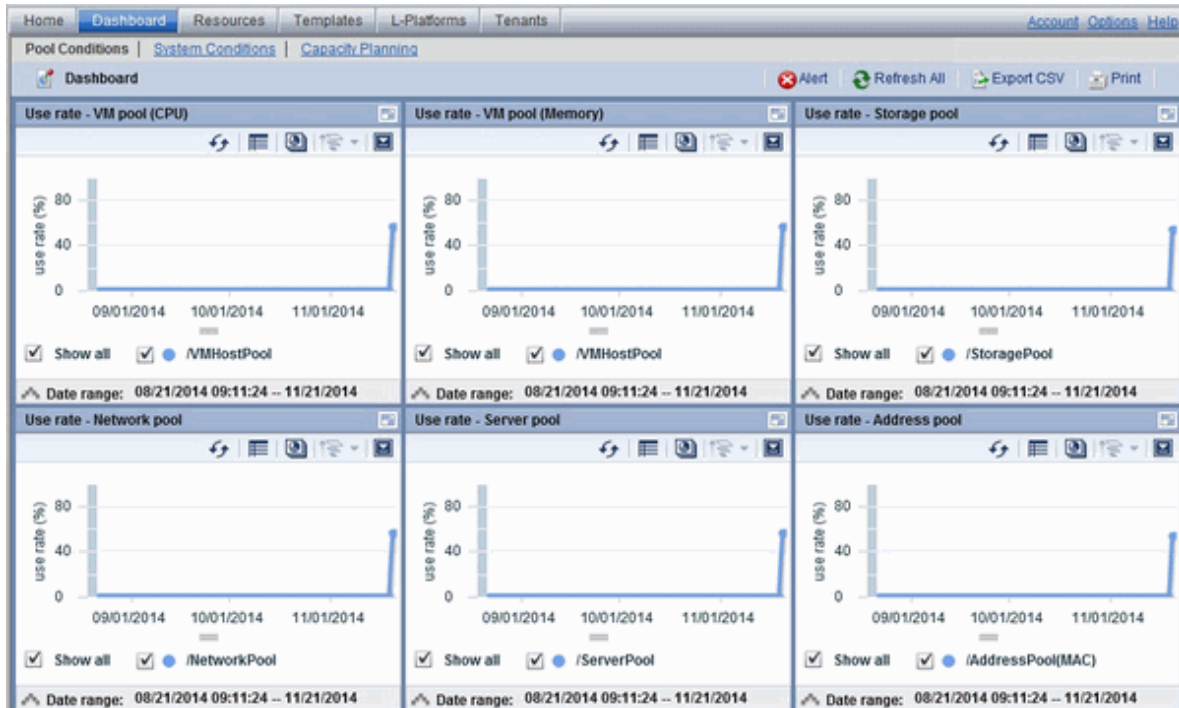
Figure 2.1 An Example of the Home Window



Dashboard (Pool Conditions)

Displays the resource pool usage status.

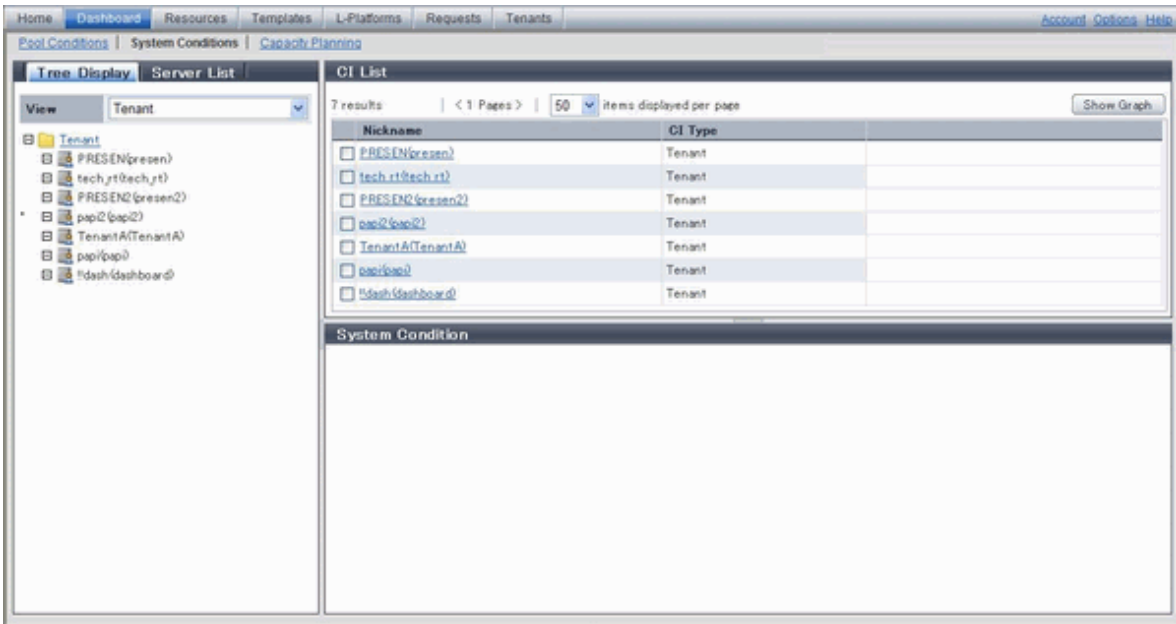
Figure 2.2 An Example of the Dashboard (Pool Conditions) Window



Dashboard (System Conditions)

Displays L-Server performance information and configuration information.

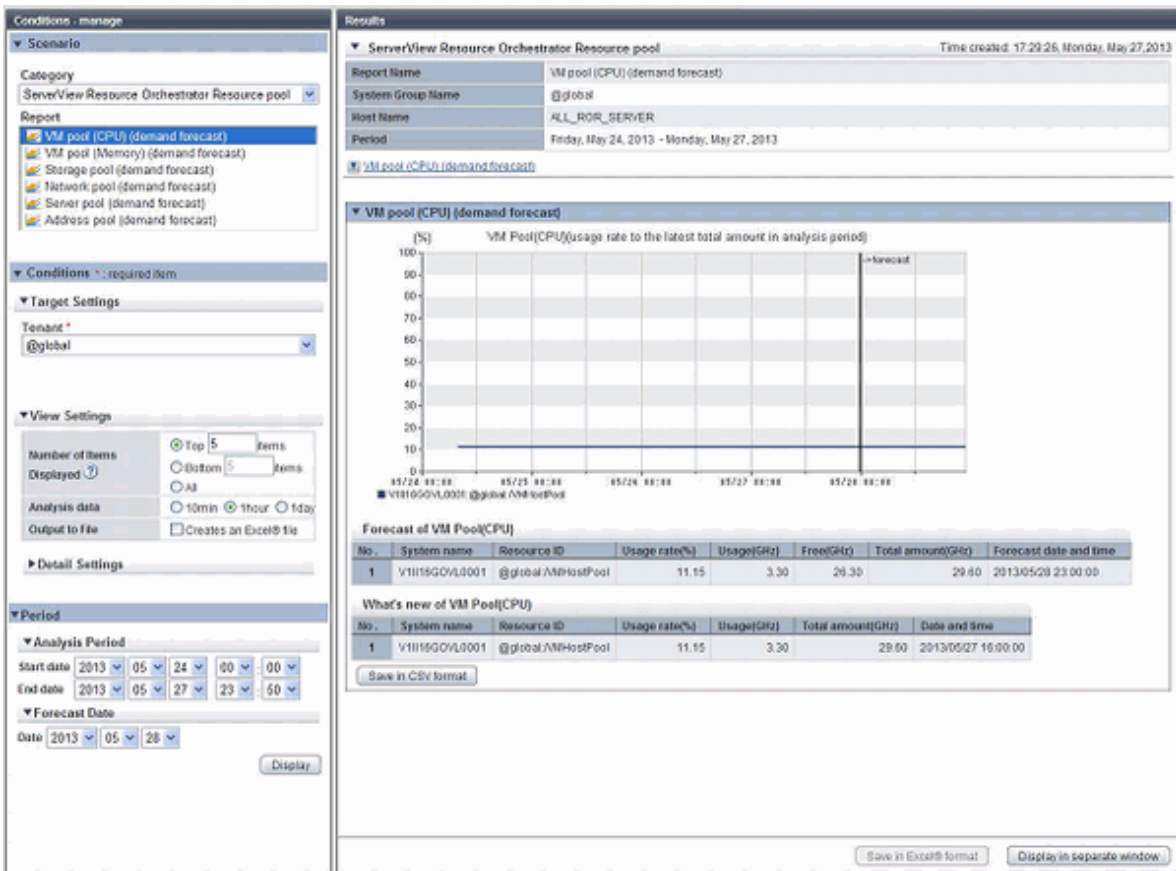
Figure 2.3 An Example of the Dashboard (System Conditions) Window



Dashboard (Capacity Planning)

Anticipate the demand for resource pools and perform simulations of VM guest reallocations.

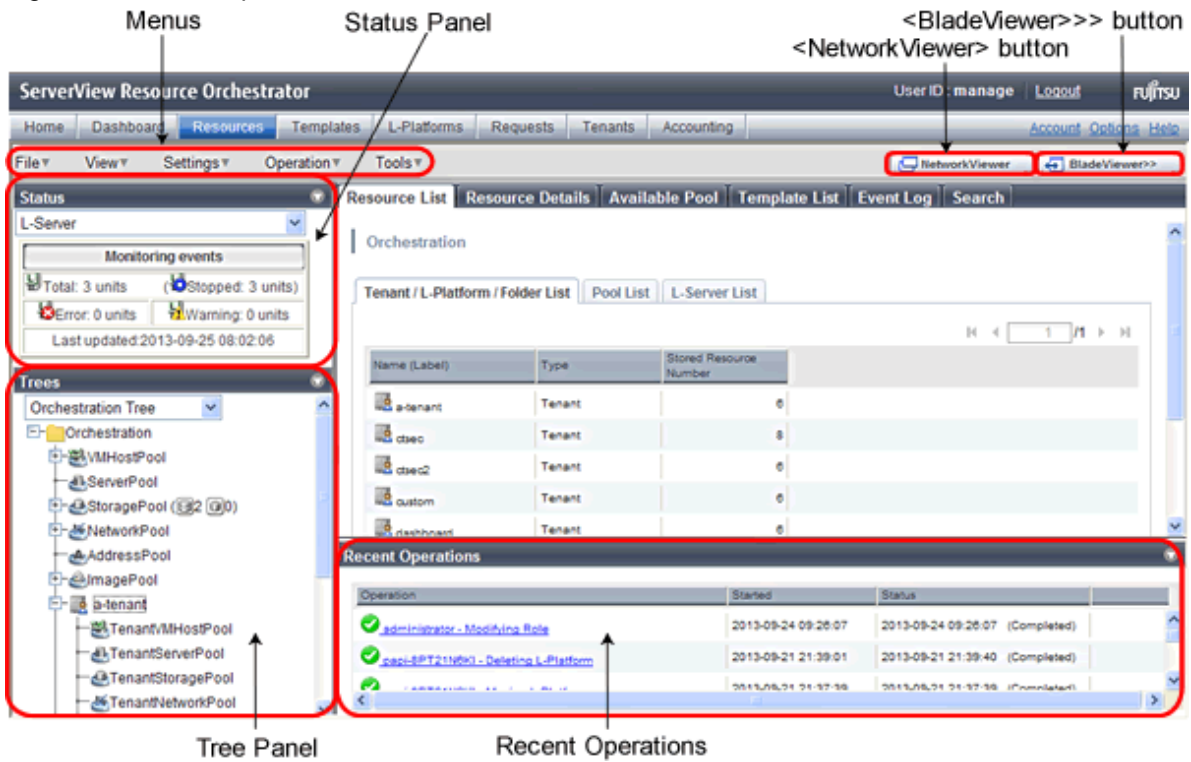
Figure 2.4 An Example of the Dashboard (Capacity Planning) Window



Resource

A window for managing the resource pool and the relationship of resources to L-Server.

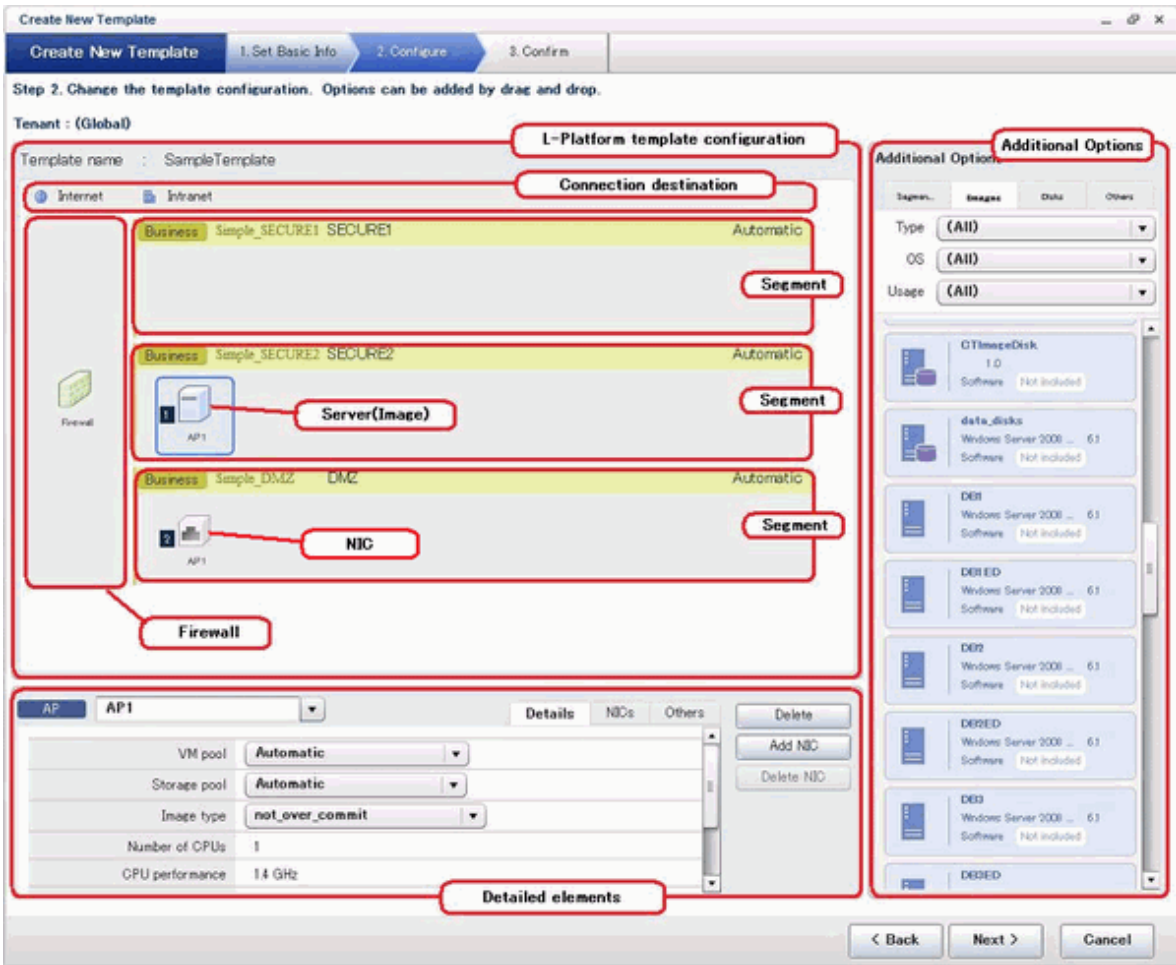
Figure 2.5 An Example of the Resource Window



Template

A window for managing L-Platform Templates.

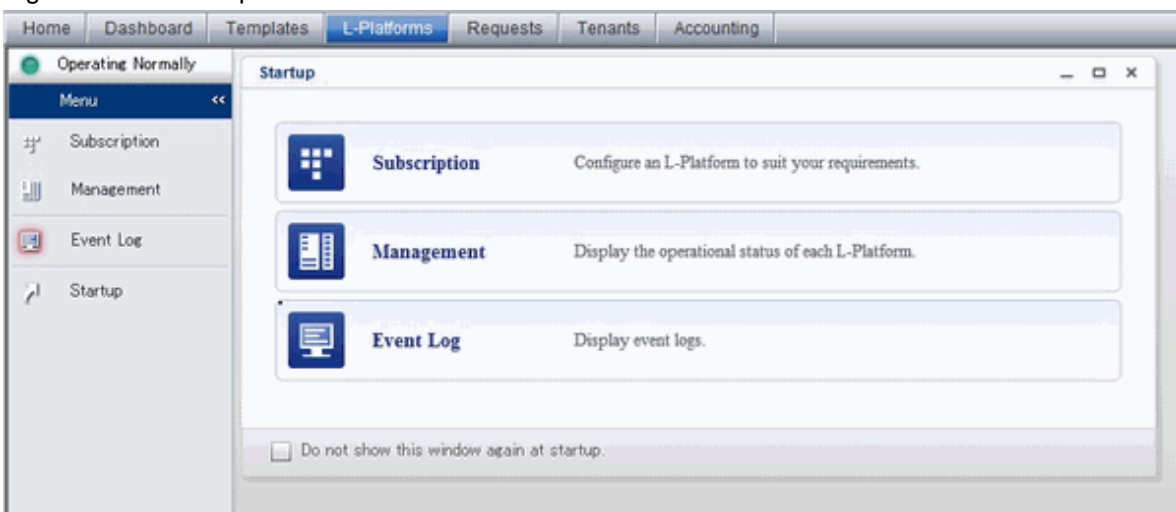
Figure 2.6 An Example of the Template Window



L-Platform

A window for managing L-Platforms.

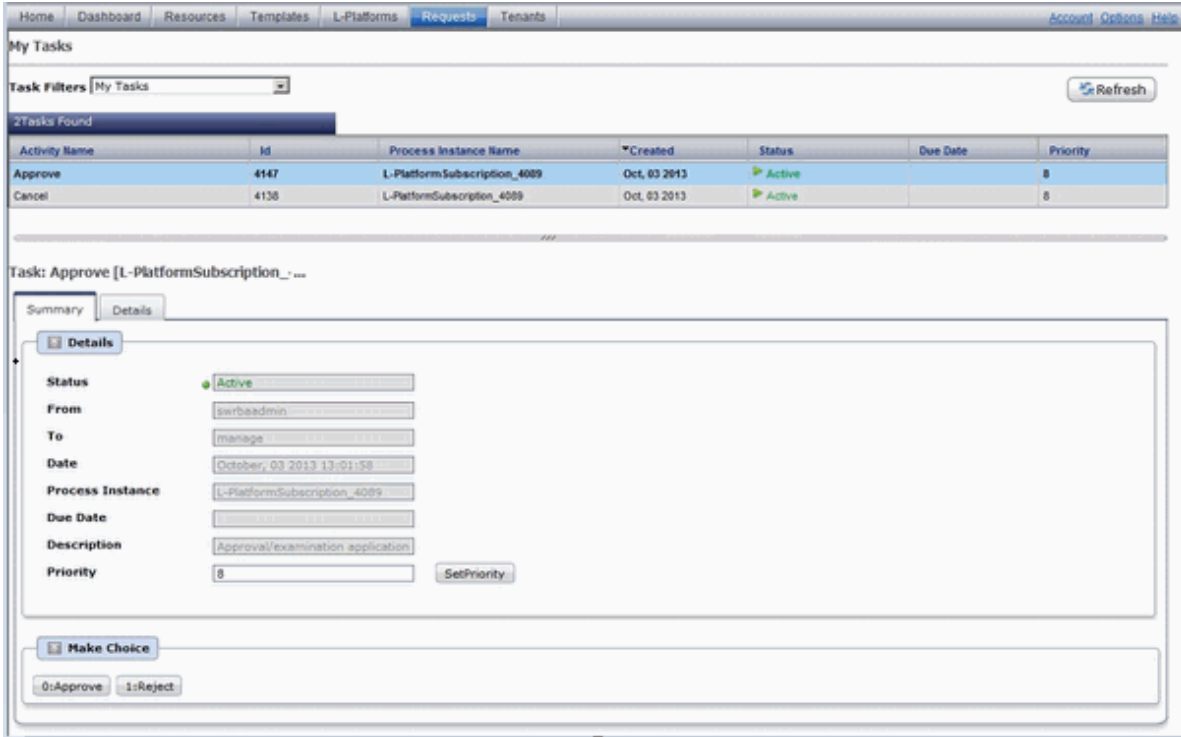
Figure 2.7 An Example of the L-Platform Window



Request

A window for assessing and approving L-Platform usage applications and other applications from tenant users.

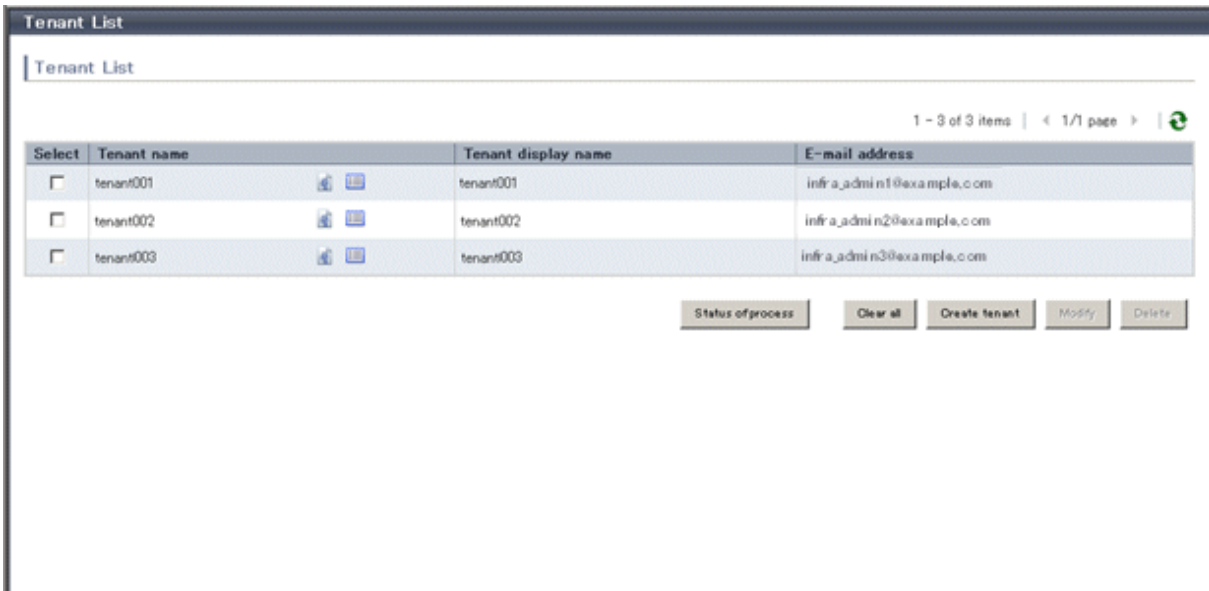
Figure 2.8 An Example of the Request Window



Tenant

A window for managing tenants and users belonging to tenants.

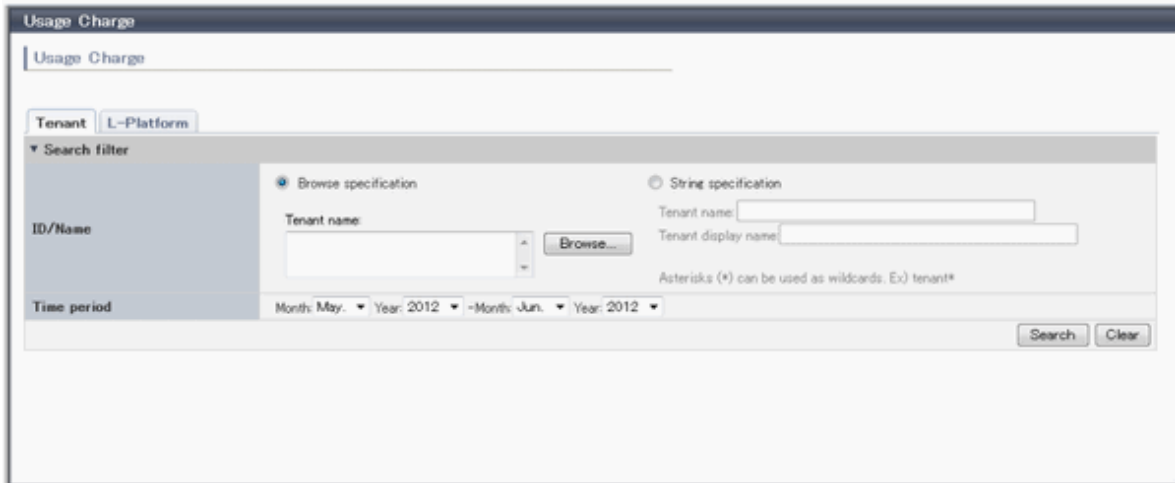
Figure 2.9 An Example of the Tenant Window



Usage Charges

Records of usage charges can be viewed.

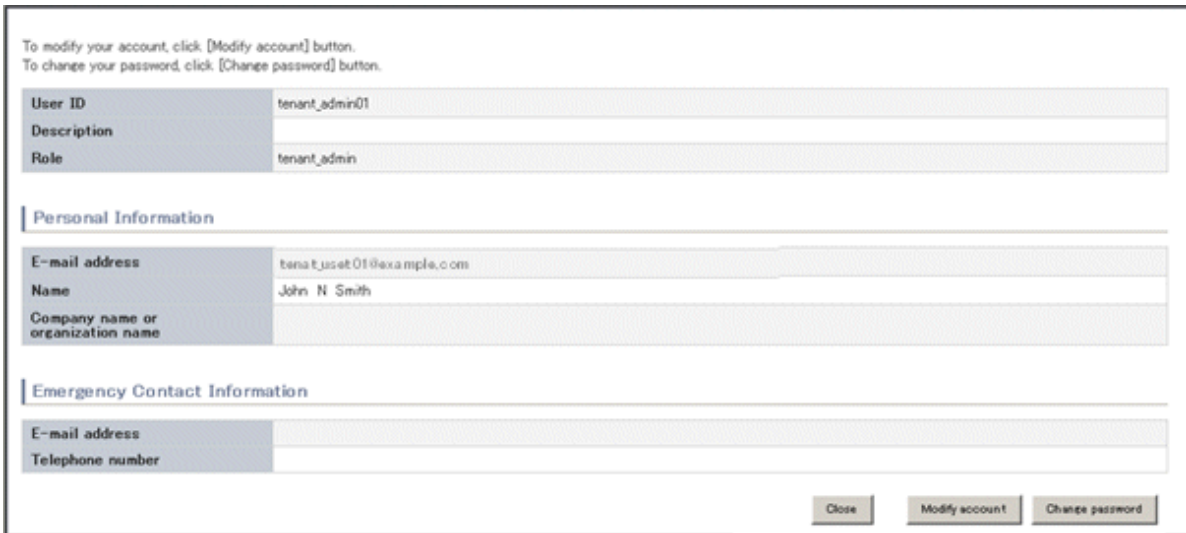
Figure 2.10 An Example of the Usage Charges Window



Account

A window for changing a logged in user's information and password.

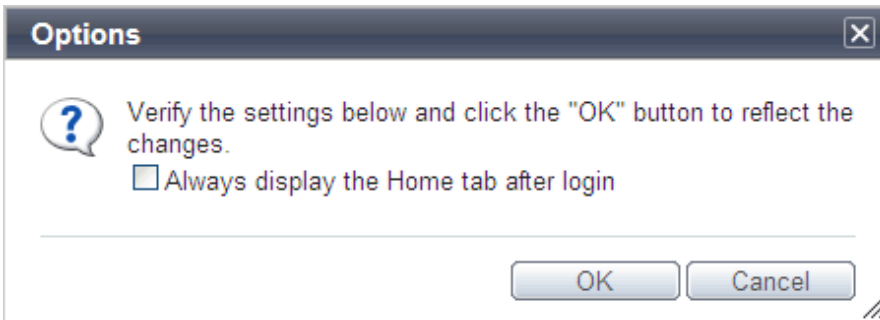
Figure 2.11 An Example of the Account Window



Option

Sets the [Home] Tab as the window displayed at login.

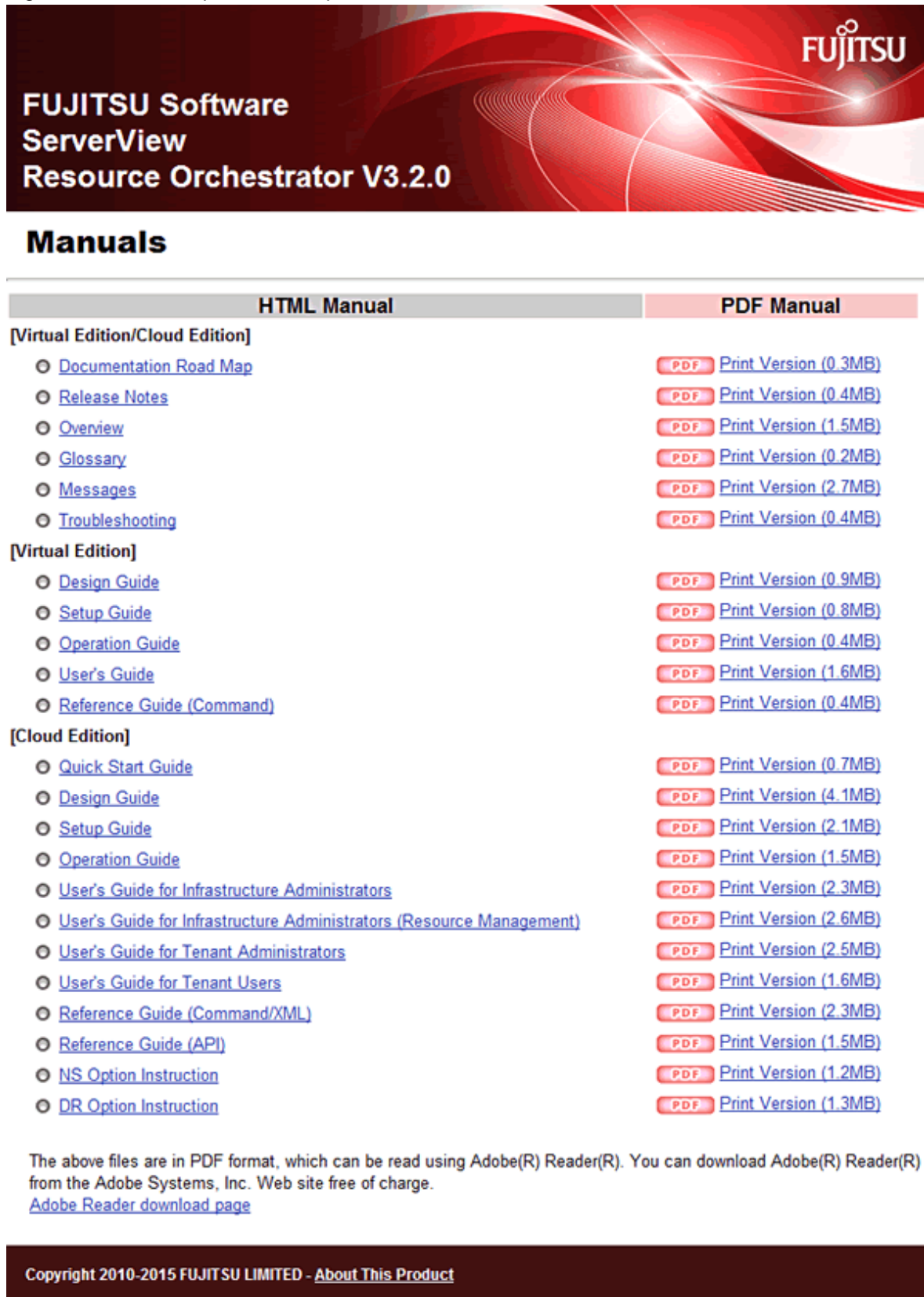
Figure 2.12 An Example of the Option Window



Help

Displays this product's manuals.

Figure 2.13 An Example of the Help Window



**FUJITSU Software
ServerView
Resource Orchestrator V3.2.0**

Manuals

HTML Manual	PDF Manual
[Virtual Edition/Cloud Edition]	
Documentation Road Map	PDF Print Version (0.3MB)
Release Notes	PDF Print Version (0.4MB)
Overview	PDF Print Version (1.5MB)
Glossary	PDF Print Version (0.2MB)
Messages	PDF Print Version (2.7MB)
Troubleshooting	PDF Print Version (0.4MB)
[Virtual Edition]	
Design Guide	PDF Print Version (0.9MB)
Setup Guide	PDF Print Version (0.8MB)
Operation Guide	PDF Print Version (0.4MB)
User's Guide	PDF Print Version (1.6MB)
Reference Guide (Command)	PDF Print Version (0.4MB)
[Cloud Edition]	
Quick Start Guide	PDF Print Version (0.7MB)
Design Guide	PDF Print Version (4.1MB)
Setup Guide	PDF Print Version (2.1MB)
Operation Guide	PDF Print Version (1.5MB)
User's Guide for Infrastructure Administrators	PDF Print Version (2.3MB)
User's Guide for Infrastructure Administrators (Resource Management)	PDF Print Version (2.6MB)
User's Guide for Tenant Administrators	PDF Print Version (2.5MB)
User's Guide for Tenant Users	PDF Print Version (1.6MB)
Reference Guide (Command/XML)	PDF Print Version (2.3MB)
Reference Guide (API)	PDF Print Version (1.5MB)
NS Option Instruction	PDF Print Version (1.2MB)
DR Option Instruction	PDF Print Version (1.3MB)

The above files are in PDF format, which can be read using Adobe(R) Reader(R). You can download Adobe(R) Reader(R) from the Adobe Systems, Inc. Web site free of charge.
[Adobe Reader download page](#)

Copyright 2010-2015 FUJITSU LIMITED - [About This Product](#)