

FUJITSU Software

Systemwalker Operation Manager

A decorative horizontal band with a red-to-dark-red gradient, featuring abstract, glowing white and red lines that swirl and intersect, creating a sense of motion and technology.

Structure and Overview of Manuals

UNIX/Windows(R)

J2X1-6900-08ENZ0(00)
May 2015

Introduction

Purpose of This Document

Please ensure that you read this document before using Systemwalker Operation Manager.

Intended Readers

This document is intended to be used by users who will use Systemwalker Operation Manager.

Abbreviations and Generic Terms Used

- The term "Windows Server 2012 R2" is used to refer to all of the following products:
 - Microsoft(R) Windows Server(R) 2012 R2 Foundation (x64)
 - Microsoft(R) Windows Server(R) 2012 R2 Standard (x64)
 - Microsoft(R) Windows Server(R) 2012 R2 Datacenter (x64)
- The term "Windows Server 2012" is used to refer to all of the following products:
 - Microsoft(R) Windows Server(R) 2012 Foundation (x64)
 - Microsoft(R) Windows Server(R) 2012 Standard (x64)
 - Microsoft(R) Windows Server(R) 2012 Datacenter (x64)
 - Microsoft(R) Windows Server(R) 2012 R2 Foundation (x64)
 - Microsoft(R) Windows Server(R) 2012 R2 Standard (x64)
 - Microsoft(R) Windows Server(R) 2012 R2 Datacenter (x64)
- The term "Windows Server 2008 R2" is used to refer to all of the following products:
 - Microsoft(R) Windows Server(R) 2008 R2 Foundation
 - Microsoft(R) Windows Server(R) 2008 R2 Standard
 - Microsoft(R) Windows Server(R) 2008 R2 Enterprise
 - Microsoft(R) Windows Server(R) 2008 R2 Datacenter
- The term "Windows Server 2008 Foundation" is used to refer to all of the following products:
 - Microsoft(R) Windows Server(R) 2008 R2 Foundation
 - Microsoft(R) Windows Server(R) 2008 Foundation
- The term "Server Core" is used to refer to all of the following products:
 - Microsoft(R) Windows Server(R) 2012 Standard Server Core
 - Microsoft(R) Windows Server(R) 2012 Datacenter Server Core
 - Microsoft(R) Windows Server(R) 2008 Standard Server Core
 - Microsoft(R) Windows Server(R) 2008 Standard without Hyper-V(TM) Server Core
 - Microsoft(R) Windows Server(R) 2008 Enterprise Server Core
 - Microsoft(R) Windows Server(R) 2008 Enterprise without Hyper-V(TM) Server Core
 - Microsoft(R) Windows Server(R) 2008 Datacenter Server Core
 - Microsoft(R) Windows Server(R) 2008 Datacenter without Hyper-V(TM) Server Core
- The term "Windows Server 2008 STD" is used to refer to all of the following products:
 - Microsoft(R) Windows Server(R) 2008 Standard (x86)/(x64)

- Microsoft(R) Windows Server(R) 2008 Standard without Hyper-V(TM)
- The term "Windows Server 2008 DTC" is used to refer to all of the following products:
 - Microsoft(R) Windows Server(R) 2008 Datacenter (x86)/(x64)
 - Microsoft(R) Windows Server(R) 2008 Datacenter without Hyper-V(TM)
- The term "Windows Server 2008 EE" is used to refer to all of the following products:
 - Microsoft(R) Windows Server(R) 2008 Enterprise (x86)/(x64)
 - Microsoft(R) Windows Server(R) 2008 Enterprise without Hyper-V(TM)
- The term "Windows Server 2008" is used to refer to all of the following products:
 - Microsoft(R) Windows Server(R) 2008 Standard (x86)/(x64)
 - Microsoft(R) Windows Server(R) 2008 Enterprise (x86)/(x64)
 - Microsoft(R) Windows Server(R) 2008 Datacenter (x86)/(x64)
 - Microsoft(R) Windows Server(R) 2008 Foundation (x64)
 - Microsoft(R) Windows Server(R) 2008 Standard without Hyper-V(TM) (x86)/(x64)
 - Microsoft(R) Windows Server(R) 2008 Enterprise without Hyper-V(TM) (x86)/(x64)
 - Microsoft(R) Windows Server(R) 2008 Datacenter without Hyper-V(TM) (x86)/(x64)
 - Microsoft(R) Windows Server(R) 2008 R2 Foundation (x64)
 - Microsoft(R) Windows Server(R) 2008 R2 Standard (x64)
 - Microsoft(R) Windows Server(R) 2008 R2 Enterprise (x64)
 - Microsoft(R) Windows Server(R) 2008 R2 Datacenter (x64)
- The term "Windows Server 2003 STD" is used to refer to all of the following products:
 - Microsoft(R) Windows Server(R) 2003 R2, Standard x64 Edition
 - Microsoft(R) Windows Server(R) 2003 R2, Standard Edition
 - Microsoft(R) Windows Server(R) 2003, Standard x64 Edition
 - Microsoft(R) Windows Server(R) 2003, Standard Edition
- The term "Windows Server 2003 DTC" is used to refer to all of the following products:
 - Microsoft(R) Windows Server(R) 2003 R2, Datacenter x64 Edition
 - Microsoft(R) Windows Server(R) 2003 R2, Datacenter Edition
 - Microsoft(R) Windows Server(R) 2003, Datacenter x64 Edition
 - Microsoft(R) Windows Server(R) 2003, Datacenter Edition for Itanium-based Systems
 - Microsoft(R) Windows Server(R) 2003, Datacenter Edition
- The term "Windows Server 2003 EE" is used to refer to all of the following products:
 - Microsoft(R) Windows Server(R) 2003 R2, Enterprise x64 Edition
 - Microsoft(R) Windows Server(R) 2003 R2, Enterprise Edition
 - Microsoft(R) Windows Server(R) 2003, Enterprise x64 Edition
 - Microsoft(R) Windows Server(R) 2003, Enterprise Edition for Itanium-based Systems
 - Microsoft(R) Windows Server(R) 2003, Enterprise Edition
- The term "Windows(R) 2000" is used to refer to all of the following products:
 - Microsoft(R) Windows(R) 2000 Professional

- Microsoft(R) Windows(R) 2000 Server
- Microsoft(R) Windows(R) 2000 Advanced Server
- Microsoft(R) Windows(R) 2000 Datacenter Server
- The term "Windows NT(R)" is used to refer to all of the following products:
 - Microsoft(R) Windows NT(R) Server network operating system Version 4.0
 - Microsoft(R) Windows NT(R) Workstation operating system Version 4.0
- The term "Windows(R) 8.1" is used to refer to all of the following products:
 - Windows(R) 8.1 (x86)
 - Windows(R) 8.1 Pro (x86)
 - Windows(R) 8.1 Enterprise (x86)
 - Windows(R) 8.1 (x64)
 - Windows(R) 8.1 Pro (x64)
 - Windows(R) 8.1 Enterprise (x64)
- The term "Windows(R) 8" is used to refer to all of the following products:
 - Windows(R) 8 (x86)
 - Windows(R) 8 Pro (x86)
 - Windows(R) 8 Enterprise (x86)
 - Windows(R) 8 (x64)
 - Windows(R) 8 Pro (x64)
 - Windows(R) 8 Enterprise (x64)
 - Windows(R) 8.1 (x86)
 - Windows(R) 8.1 Pro (x86)
 - Windows(R) 8.1 Enterprise (x86)
 - Windows(R) 8.1 (x64)
 - Windows(R) 8.1 Pro (x64)
 - Windows(R) 8.1 Enterprise (x64)
- The term "Windows(R) 7" is used to refer to all of the following products:
 - Windows(R) 7 Home Premium (x86)
 - Windows(R) 7 Professional (x86)
 - Windows(R) 7 Enterprise (x86)
 - Windows(R) 7 Ultimate (x86)
 - Windows(R) 7 Home Premium (x64)
 - Windows(R) 7 Professional (x64)
 - Windows(R) 7 Enterprise (x64)
 - Windows(R) 7 Ultimate (x64)
- The term "Windows Vista(R)" is used to refer to all of the following products:
 - Windows Vista(R) Home Basic (x86)
 - Windows Vista(R) Home Premium (x86)

- Windows Vista(R) Business (x86)
- Windows Vista(R) Enterprise (x86)
- Windows Vista(R) Ultimate (x86)
- Windows Vista(R) Home Basic (x64)
- Windows Vista(R) Home Premium (x64)
- Windows Vista(R) Business (x64)
- Windows Vista(R) Enterprise (x64)
- Windows Vista(R) Ultimate (x64)
- The term "Windows(R) XP" is used to refer to all of the following products:
 - Microsoft(R) Windows(R) XP Professional x64 Edition
 - Microsoft(R) Windows(R) XP Professional
 - Microsoft(R) Windows(R) XP Home Edition
- Microsoft(R) Windows(R) Millennium Edition is abbreviated as "Windows(R) Me".
- Microsoft(R) Windows(R) 98 operating system is abbreviated as "Windows(R) 98".
- Microsoft(R) Windows(R) 2000 Server is abbreviated as "Windows(R) 2000 Server".
- Windows Internet Explorer(R) is abbreviated as "Internet Explorer".
- Versions of Systemwalker Operation Manager that run on all of the following operating systems are referred to as "Windows versions of Systemwalker Operation Manager" or simply "Windows versions":
 - Windows
 - 64-bit versions of Windows, except Itanium
- Articles specific to the version of Systemwalker Operation Manager that runs on 32-bit versions of Windows are referred to as "Windows x86 version".
- Articles specific to the version of Systemwalker Operation Manager that runs on Itanium-compatible versions of Windows are referred to as "Windows for Itanium version".
- Articles specific to the version of Systemwalker Operation Manager that runs on 64-bit versions of Windows, except Itanium, are referred to as "Windows x64 version".
- Windows(R) 2000, Windows Server 2003 STD, Windows Server 2003 DTC, Windows Server 2003 EE, Windows Server 2008, Windows Server 2008 EE, Windows Server 2008 DTC, Windows Server 2008 STD, Windows Server 2008 Foundation, Windows Server 2008 R2, Server Core, Windows Server 2012, and Windows Server 2012 R2 may be abbreviated as "Windows servers".
- Oracle Solaris may be referred to as Solaris, Solaris Operating System or Solaris OS.
- Versions of Systemwalker Operation Manager that run on Solaris are referred to as "Solaris versions of Systemwalker Operation Manager" or simply "Solaris versions".
- Articles specific to the version of Systemwalker Operation Manager that runs on 32-bit versions of Solaris are referred to as "Solaris 32-bit version".
- Articles specific to the version of Systemwalker Operation Manager that runs on 64-bit versions of Solaris are referred to as "Solaris 64-bit version".
- Versions of Systemwalker Operation Manager that run on HP-UX are referred to as "HP-UX versions of Systemwalker Operation Manager" or simply "HP-UX versions".
- Versions of Systemwalker Operation Manager that run on AIX are referred to as "AIX versions of Systemwalker Operation Manager" or simply "AIX versions".

- Versions of Systemwalker Operation Manager that run on the following operating system are referred to as "Linux versions of Systemwalker Operation Manager" or simply "Linux versions":
 - Linux
 - 64-bit versions of Linux, except Itanium
- Articles specific to the version of Systemwalker Operation Manager that runs on 32-bit versions of Linux are referred to as "Linux x86 version".
- Articles specific to the version of Systemwalker Operation Manager that runs on Itanium-compatible version of Linux are referred to as "Linux for Itanium version".
- Articles specific to the version of Systemwalker Operation Manager that runs on 64-bit versions of Linux, except Itanium, are referred to as "Linux x64 version".
- Solaris, HP-UX, AIX, Linux and Linux for Itanium versions of Systemwalker Operation Manager are referred to collectively as "UNIX versions of Systemwalker Operation Manager" or simply "UNIX versions".
- Solaris, HP-UX, AIX and Linux may be referred to as "UNIX servers".
- Systemwalker Operation Manager Standard Edition may be abbreviated as "SE".
- Systemwalker Operation Manager Enterprise Edition may be abbreviated as "EE".
- Standard Edition may be abbreviated as "SE" and Enterprise Edition may be abbreviated as "EE".
- BrightStor(R) ARCserve(R) Backup for Windows is abbreviated as "ARCserve".
- Microsoft(R)-Mail that is provided as a standard feature with Windows NT(R) is abbreviated as "MS-Mail".

Export Restriction

Exportation/release of this document may require necessary procedures in accordance with the regulations of your resident country and/or US export control laws.

Trademarks

APC and PowerChute are trademarks or registered trademarks of American Power Conversion Corporation.

ARCserve is a registered trademark of CA, Inc. or one of its subsidiaries.

HP-UX is a registered trademark of Hewlett-Packard Development Company.

IBM, the IBM logo, AIX, HACMP, and ViaVoice are trademarks or registered trademarks of International Business Machines Corporation in the United States and/or other countries.

Intel and Itanium are trademarks of Intel Corporation in the U.S. and/or other countries.

MC/ServiceGuard is a registered trademark of Hewlett-Packard Company.

Microsoft, Windows, and Windows Server are either registered trademarks or trademarks of Microsoft Corporation in the United States and/or other countries.

Red Hat, Red Hat Enterprise Linux, the Shadowman logo and JBoss are registered trademarks of Red Hat, Inc. in the U.S. and other countries.

Linux is a registered trademark of Linus Torvalds.

Oracle and Java are registered trademarks of Oracle and/or its affiliates.

R/3 and SAP are registered trademarks of SAP AG in Germany and in several other countries.

Tcl/Tk is free software developed by the University of California, Sun Microsystems, Inc., Scriptics Corporation, and other parties.

UNIX is a registered trademark of The Open Group.

VMware, the VMware logo, and VMotion are registered trademarks or trademarks of VMware, Inc. in the United States and/or other jurisdictions.

Short Mail is a registered trademark of NTT DoCoMo, Inc.

Other names may be trademarks or registered trademarks of their respective owners.

The use of screenshots follows the guidelines of Microsoft Corporation.

May 2015

Copyright 1995-2015 FUJITSU LIMITED

Contents

Chapter 1 Manual Organization.....	1
Chapter 2 How to Read the Manuals.....	3
2.1 Reverse Manual Lookup Guide.....	3
2.2 Related Manuals.....	8
2.3 Notes on Description in Manuals.....	9
2.3.1 Product Name of Systemwalker Operation Manager.....	9
2.3.2 Edition-specific information.....	9
2.3.3 Information specific to Windows or UNIX versions.....	9
2.3.4 Font styles and notation.....	10
2.3.5 How to Read Operating Procedures in Windows.....	11

Chapter 1 Manual Organization

The Systemwalker Operation Manager documentation includes the following:

- [Online Manuals](#)
- [Technical Information Manuals](#)
- [Maintenance Manuals](#)
- [Online Help](#)

Online Manuals Accompanying the Product

The following manuals are stored on the product media in PDF format. They can be referenced directly from the product media or after copying files from the product media to a hard disk.

Online Manuals

Manual Name	Readers' Tasks
Systemwalker User's Guide - Systemwalker User Management and Single Sign-on	<ul style="list-style-type: none">- Using Systemwalker products by using the Systemwalker user management and single sign-on functions
Release Guide	<ul style="list-style-type: none">- Learning new functions or changed function- Learning Incompatible Items
Quick Start Guide	<ul style="list-style-type: none">- Acquiring basic knowledge- Understanding basic operations, from installation through to registration, execution, and monitoring of jobs
Technical Guide	<ul style="list-style-type: none">- Learning basic terminology- Learning an overview of functionality- Knowing what software and hardware is required- Deciding security measures- Learning a representation of operations- Verifying a combination of versions- Verifying limit values
Installation Guide	<ul style="list-style-type: none">- Learning how to install- Learning how to set an operating environment- Learning how to back up an operating environment- Learning how to collect maintenance information- Understanding a file configuration of operating environment
Design Guide	<ul style="list-style-type: none">- Learning outline for designing system with using Systemwalker Operation Manager.
User's Guide	<ul style="list-style-type: none">- Learning how to use Systemwalker Operation Manager- Understanding considerations regarding operations
Reference Guide	<ul style="list-style-type: none">- Learning script syntax of commands, JCL, Systemwalker Scripts- Using API information and exit information- Learning output formats of information files

Manual Name	Readers' Tasks
	<ul style="list-style-type: none"> - Learning job completion codes - Learning command syntax for the Master Schedule Management function
Upgrade Guide	<ul style="list-style-type: none"> - Learning new functions, as well as functions that have been changed - Learning how to migrate from earlier versions - Understanding notes about migration - Learning incompatibility items
Message Guide	<ul style="list-style-type: none"> - Learning meanings and action methods for messages
User's Guide - Master Schedule Management	<ul style="list-style-type: none"> - Learning an overview of the Master Schedule Management function - Learning how to install the Master Schedule Management function - Learning how to operate the Master Schedule Management function - Verifying a combination of versions and limit values for the Master Schedule Management function
Web Console Operation Guide	<ul style="list-style-type: none"> - Learning an overview of the Web console function - Learning how to set up an operating environment - Learning how to operate the Web console
How-To Guide	<ul style="list-style-type: none"> - Learning how to use Systemwalker Operation Manager
Glossary	<ul style="list-style-type: none"> - Knowing the meaning of terminology used in Systemwalker Operation Manager and its manuals

Technical Information Manuals

Manual Name	Readers' Tasks
Cluster Setup Guide for Windows Cluster Setup Guide for UNIX	<ul style="list-style-type: none"> - Operating Systemwalker Operation Manager in a cluster system

Maintenance Manuals

Manual Name	Readers' Tasks
Troubleshooting Guide Q & A Guide	<ul style="list-style-type: none"> - Learning the result of trouble and dealing with it

Online Help

The online help can be opened from the Help menu or Help button in a window of Systemwalker Operation Manager. Refer to online help for how to use menu items and buttons in a window and their features.

Manual Name	Readers' Tasks
Online Help	<ul style="list-style-type: none"> - Learning features of a menu item of each window

Chapter 2 How to Read the Manuals

This chapter describes how to read the Systemwalker Operation Manager manuals.

2.1 Reverse Manual Lookup Guide

Items are categorized by topic for customers' needs.

It allows users to search topics from relevant manuals and descriptions (chapter, section, item) according to their needs.

- [Consideration of pre-installation](#)
- [Design](#)
- [Installation](#)
- [Settings and Security](#)
- [Operation](#)
- [Reference](#)
- [Maintenance](#)

Consideration of pre-installation

Check the consideration before installing Systemwalker Operation Manager

Item		Overview	Location of Manual Entry (Chapter, Section, Item)
Understanding the product overview	Overview	Function overview/Operation configuration	Technical Guide "Chapter 1 Function Overview" User's Guide - Master Schedule Management "Chapter 1 Overview" Systemwalker User's Guide - Systemwalker User Management and Single Sign-On "1.3 Operation Configuration"
	Function	Function description	Technical Guide "Chapter 2 Operating Methods" Systemwalker User's Guide - Systemwalker User Management and Single Sign-On "1.1 Functional Overview" "1.2 Functional Configuration"
		Functions that have been added in V13.8.0	Upgrade Guide "1.1 Functions Added in V13.8.0"
		Functional differences for each operating system	Technical Guide "Appendix C List of Functional Differences for Each Operating System"
	Operating environment	Hardware resources	Technical Guide "3.1 Hardware Resources"
		Software resources	Technical Guide "3.2 Software Resources"
		Supported products	Systemwalker User's Guide - Systemwalker User Management and Single Sign-On "1.4 Supported Products"
		Consistency with earlier versions	Technical Guide "Appendix A Compatibility with Earlier Versions"

Item		Overview	Location of Manual Entry (Chapter, Section, Item)
			Upgrade Guide "Chapter 3 Upgrading Notes and Incompatible Items" User's Guide - Master Schedule Management "Appendix A Consistency with the Earlier version"
		Port numbers	Installation Guide "Appendix C Listing of Port Numbers" Systemwalker User's Guide - Systemwalker User Management and Single Sign-On "6.4 Port Numbers"
	Terminology	Terminology explanation	Glossary

Design

Check the design of Systemwalker Operation Manager.

Item		Overview	Location of Manual Entry (Chapter, Section, Item)
Designing the system		Functions to be installed	Installation Guide "1.1 List of functions to be installed"
		Installation flow	Installation Guide "1.2 Tasks from Installation Through Operation" Systemwalker User's Guide - Systemwalker User Management and Single Sign-On "Chapter 2 Installation Design" Design Guide "Chapter 2 Overview of System Design"
		Limitations and notes when linking to other products	Technical Guide "2.16 Linking to Other Products" "3.2 Software Resources" User's Guide "A.7 Cautions when Linking with Other Products [UNIX version]" Systemwalker User's Guide - Systemwalker User Management and Single Sign-On "1.5 Coexistence with Other Products"
		Notes and limitations when using Systemwalker Operation Manager	Technical Guide "Appendix B Limit Values" "Appendix C List of Functional Differences for Each Operating System" User's Guide - Master Schedule Management "Appendix B Limited Values" User's Guide "Appendix A Important Notes"
		Estimating disk capacity	Technical Guide "3.1 Hardware Resources" Systemwalker User's Guide - Systemwalker User Management and Single Sign-On "2.1 Designing a Systemwalker Authentication Repository" "2.2 Designing Systemwalker Common Users"
Designing business operation		Design operation for server	Design Guide "Chapter 3 Determining Power Schedules"

Item	Overview	Location of Manual Entry (Chapter, Section, Item)
	Creation of jobs/job nets	Design Guide "Chapter 4 Designing Jobs"
	Start schedules of job nets	Design Guide "Chapter 5 Determining How to Start Jobs and Job Nets"
	The execution environment for job	Design Guide "Chapter 6 Designing the Job Execution Environment"
	The monitoring method	Design Guide "Chapter 7 Determining the Monitoring Method"
	Contingency procedures	Design Guide "Chapter 8 Determining Contingency Procedures"
	Learning the settings and procedure required according to user objectives to enable the user	Hot-To Guide "Chapter 1 Design"

Installation

Check the installation of Systemwalker Operation Manager.

Item	Overview	Location of Manual Entry (Chapter, Section, Item)	
Newly installing	Procedure for configuring an environment	Systemwalker User's Guide - Systemwalker User Management and Single Sign-On "Chapter 3 Installation"	
	Installation	Installation methods	Installation Guide "1.3 Installation in the Windows System" "1.4 Installation in the UNIX System" "1.5 Silent Installation"
		Notes on installation	Installation Guide "1.3.1 Notes Prior to Installation" "1.3.4 Notes After Installation" "1.4.1 Notes Prior to Installation"
		Procedure for configuring the environment for Systemwalker user management/ Systemwalker single sign-on	Systemwalker User's Guide - Systemwalker User Management and Single Sign-On "3.3 Setting up the Connection Destination Systemwalker Authentication Repository"
	Uninstallation	Uninstallation method and its notes	Installation Guide "1.6 Uninstallation"
Building a highly reliable system	Cluster	Building highly reliable systems using cluster software	Cluster Setup Guide for Windows Cluster Setup Guide for UNIX
Performing upgrades	Checking the system prior to migration	Consistency with earlier versions	Technical Guide "Appendix A Compatibility with Earlier Versions" Upgrade Guide "1.1 Target Products for Migration" User's Guide - Master Schedule Management "Appendix A Consistency with the Earlier version"

Item		Overview	Location of Manual Entry (Chapter, Section, Item)
		Notes for upgrading and incompatibilities	Release Guide "Chapter 1 Additional Functions Overview" "Chapter 2 Incompatible Notes "
	Procedure for migration	Methods of migration	Upgrade Guide

Settings and Security

Check the settings and security of Systemwalker Operation Manager.

Item		Overview	Location of Manual Entry (Chapter, Section, Item)
Settings/ Definitions	Definitions for operating environment	Tuning methods	Installation Guide "2.2.4 Tuning System Parameters [UNIX]" User's Guide "A.1 Tuning of Performance"
		Definitions for operating environment	Installation Guide "Chapter 2 Definition of Operating Environment of Systemwalker Operation Manager" User's Guide - Master Schedule Management "Chapter 2 Environment Definition"
		Storage location of definition information	Installation Guide "Appendix A Storage Location of Definition Information Files" "Appendix B Definition of Operating Information in a File"
		Changing the installation environment	Installation Guide "Appendix D Changing the System Installation Environment"
		Linking to Systemwalker Centric Manager	Installation Guide "2.12 Definitions for Monitoring the Execution Status of Job Nets by Linking to Systemwalker Centric Manager"
Enhancing security	Overview of security	Overview of security functions	Technical Guide "Chapter 4 Security"
	Security definitions	Definitions of security functions	Installation Guide "2.3 Security Definitions"
Operating Systemwalker products with a Systemwalker user		Using Systemwalker user management/Systemwalker single sign-on	Systemwalker User's Guide - Systemwalker User Management and Single Sign-On "3.3 Setting up the Connection Destination Systemwalker Authentication Repository" "3.4 Creating an Environment for Systemwalker Single Sign-On Agent" "3.5 Registering Systemwalker Common Users" "3.6 Setting up the Web Browser"

Operation

Check the operation of Systemwalker Operation Manager.

Item		Overview	Location of Manual Entry (Chapter, Section, Item)
Preparing for monitoring	Preparation for operation	Tasks prior to operation	User's Guide "Chapter 1 Startup/Shutdown" "Chapter 2 Setting Up The System Calendar" "Chapter 3 Scheduling Power On/Off for Servers" Web Console Operation Guide "2.1 Login/Logout"
	Scheduling	Scheduling of jobs	User's Guide "Chapter 4 Scheduling Jobs"
		Scheduling of services and applications	User's Guide "Chapter 10 Scheduling Services and Applications"
Monitoring/ Operating	Monitoring	Monitoring job nets	User's Guide "Chapter 6 Monitoring Jobs" "Chapter 8 Browsing Job History" "Chapter 14 Status and Operations of Scheduled Jobs" User's Guide - Master Schedule Management "Chapter 4 Monitor and Operation" Web Console Operation Guide 2.4 Monitoring Flow
		Analyzing monitored logs	User's Guide "Chapter 12 Analyzing Audit Logs" "Appendix B List of Search Keywords for Audit Logs"
		Event monitoring/action management	User's Guide "Chapter 11 Monitoring Events and Managing Actions [Windows version]"
	Operating	Operating jobs	User's Guide "Chapter 5 Registering and Submitting Demand Job" "Chapter 7 Operating Jobs" "Chapter 9 Printing Jobscheduler Information" "Chapter 13 Changing According to Operations" Installation Guide "Appendix E Usage Restrictions Based on Access Rights" Web Console Operation Guide 2.3 Operating and Monitoring in the Web Console
	Master Schedule Management	Operation method of the Master Schedule Management function	User's Guide - Master Schedule Management "Chapter 3 Operating Setup" "Chapter 4 Monitor and Operation"
	Learning the settings and procedure required according to user objectives to enable the user		Hot-To Guide "Chapter 2 Operation and Monitoring"

Reference

Check reference information of Systemwalker Operation Manager.

Item	Overview	Location of Manual Entry (Chapter, Section, Item)
Reference	Reference information such as commands and JCL	Reference Guide

Maintenance

Check the maintenance of Systemwalker Operation Manager.

Item	Overview	Location of Manual Entry (Chapter, Section, Item)
Changing an installation environment	Upgrading operating systems	Upgrade Guide "Chapter 3 OS Upgrading"
	Changing a startup account	Installation Guide "D.1 Changing the Startup Account [Windows version]"
	Changing IP address/host name	Installation Guide "D.2.1 Changing the IP Address and Host Name of Systemwalker Operation Manager Server"
	Switching users	Installation Guide "D.4 Changing User Management Methods"
	Changing domain controllers	Installation Guide "D.5 Promoting/Demoting a Sever Machine to or from a Domain Controller"
	Changing the installation environment for Systemwalker user management/Systemwalker single sign-on	Systemwalker User's Guide - Systemwalker User Management and Single Sign-On "3.5 Registering Systemwalker Common Users" "4.4 Changing the Operating Environment"
Backup/Restore	Installation Guide "Chapter 3 Backing Up or Restoring Operation Environment" Systemwalker User's Guide - Systemwalker User Management and Single Sign-On "4.3 Backup and Restoration"	
Handling problems	Checking messages	Message Guide Systemwalker User's Guide - Systemwalker User Management and Single Sign-On "6.3 List of Messages"
	Checking how to address by phenomenon	Troubleshooting Guide
	Collection method of maintenance data	Message Guide "Appendix A Collecting Maintenance Information" Installation Guide "2.14 Definition for Maintenance"

2.2 Related Manuals

This section explains the manuals that will help you with reference, depending on the purpose for using Systemwalker Operation Manager.

As well as Systemwalker Operation Manager manuals, refer to the following manuals if necessary.

When you link to Systemwalker Centric Manager, refer to the relevant Systemwalker Centric Manager manuals.

When you use the power control function, refer to the manuals related to the products below:

- "PowerChute(R) *plus*"
- "PowerChute(R) Business Edition"

When you link to another product, refer to the manuals related to the products below:

- "Interstage Application Server"

When you run Systemwalker Operation Manager in a cluster system, refer to the manuals for cluster systems.

When you use "backup linkage", refer to the following manuals:

- "BrightStor(R) ARCserve(R) Backup for Windows - Installation Guide"
- "BrightStor(R) ARCserve(R) Backup for Windows - Administrator's Guide"

2.3 Notes on Description in Manuals

This section explains specific descriptions used in the Systemwalker Operation Manager manuals.

2.3.1 Product Name of Systemwalker Operation Manager

The product name of Systemwalker Operation Manager differs depending on versions. The product name is generally referred to as "Systemwalker Operation Manager" in the Systemwalker Operation Manager manuals. However, it will be referred to as each version's product name if the version is identified.

Version	Product Name
V11.0L10/11.0 or later	Systemwalker Operation Manager
V10.0L20/V10.0L21/10.1	Systemwalker OperationMGR
V10.0L10/10.0 or before	SystemWalker/OperationMGR

2.3.2 Edition-specific information

The Systemwalker Operation Manager manuals focus on the Standard Edition and Enterprise Edition.

Information that is specific to the Enterprise Edition is distinguished from the Standard Edition (standard specification) by adding the "EE" icon either to a title or body text.

The range of information specific to the Enterprise Edition depends on whether the EE icon is added to the title or body text, as follows:

When the EE icon is added to title text:

When the EE icon is added to chapter, section, or whatever title, this indicates that the entire article under the title is specific to the Enterprise Edition. For the manuals in HTML format, the title is displayed with a background color.

When the EE icon is added to body text:

For the manuals in HTML format, the edition-specific entire article is displayed with a background color.

2.3.3 Information specific to Windows or UNIX versions

The Systemwalker Operation Manager manuals contain information common to both the Windows versions and the UNIX versions. Information specific to only the Windows versions or information specific to only the UNIX versions is distinguished from common information by adding the following icons:

Title [Windows]

The entire description under the title or subheading is specific to the Windows versions.

Title [Solaris]

The entire description under the title or subheading is specific to the Solaris versions.

Title [Linux]

The entire description under the title or subheading is specific to the Linux versions.

Title [UNIX]

The entire description under the title or subheading is specific to the UNIX versions.

Also, if there is specific information of the architecture for each operating system, such information is described by expressions such as "Windows x86f".

When there is different information for the Windows versions and the UNIX versions within the body text, such information is distinguished by expressions such as "for Windows" or "for UNIX".

2.3.4 Font styles and notation

Font styles and notation used in GUI item names and command descriptions are explained below:

Font style used in GUI items and menu items

The bold font style is applied to the names of windows, window items and menus that are provided by Systemwalker Operation Manager.

Font style used in command

The font style used in command descriptions in "Synopsis" and "Options" is explained below:

Font style meanings

Font style	Meaning
italic	Select one of the items listed in "Options". In case italic letters are enclosed in angle brackets (<>), these are user defined strings. Refer to "Symbol meanings" below.

Notation used in commands and JCL

Notation used in commands or JCL is explained below:

Example

[PARA={a b c}...]

Meanings

Notation	Meaning
[]	Items enclosed in square brackets are optional. In syntax for Systemwalker Scripts, blue bold brackets ([]) are used instead, and these brackets ([]) are used as the notation that has another meaning.
{ }	Select one of the items enclosed in braces ({ }).
—	When all optional items enclosed in square brackets ([]) are omitted, the default value indicated by an underscore (_) is used.
	Select one of the items separated by vertical bars.
...	The item immediately before the ellipsis (...) can be repeatedly specified.

Command prompt

Characters used in command-line prompt are explained below:

#

The command should be executed by a user with the System Administrator privilege.

% or \$

The command is executed by a user with a privilege other than the System Administrator privilege.

Note/Point/Information/Reference



Provides important information to consider.



Provides helpful information.



Provides information that will be a good reference.



Provides a destination for reference.

2.3.5 How to Read Operating Procedures in Windows

The Systemwalker Operation Manager manuals use examples from Windows(R) 7 and Windows Server 2008 or earlier to explain operating procedures for the Windows operating system.

If using Windows(R) 8 or Windows Server 2012 or later

Operations that specify "Start or Apps"

If using Windows(R) 8, or Windows Server 2012 or later, operations that specify "**Start** or **Apps**" indicate procedures from the **Apps** window onwards.

To display the **Apps** window, follow the procedure for the relevant operating system.

If using Windows(R) 7 or Windows Server 2008 or earlier

Operations that specify "Start or Apps"

If using Windows(R) 7, or Windows Server 2008 or earlier, substitute "**Start** or **Apps**" with the "**Start**" menu in the given operation.

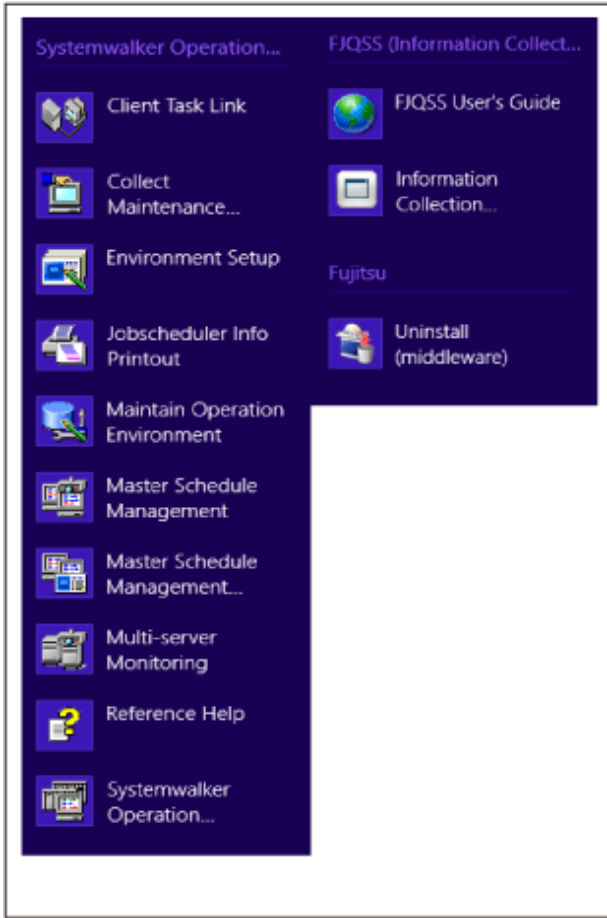
Note that when substituting "**Start** or **Apps**" with the "**Start**" menu, the submenu names in Windows(R) 7 or Windows Server 2008 or earlier will be omitted.

Accordingly, supplement the omitted submenus by substituting as shown in the tables below.

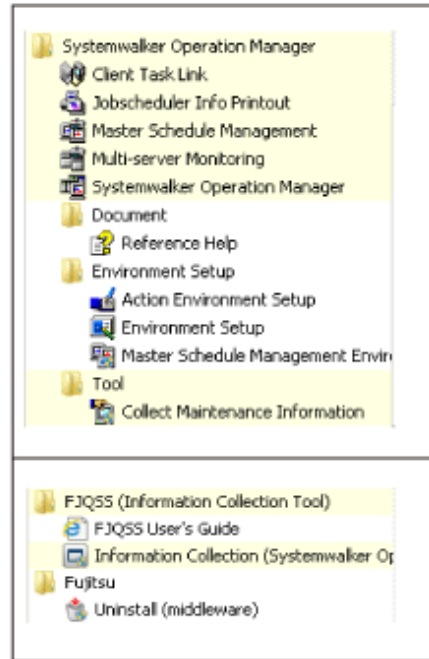
For the client

The client menu is shown below.

"App" windows for Windows(R) 8



"Start" menu for Windows(R) 7



The items to be substituted for the client are shown below.

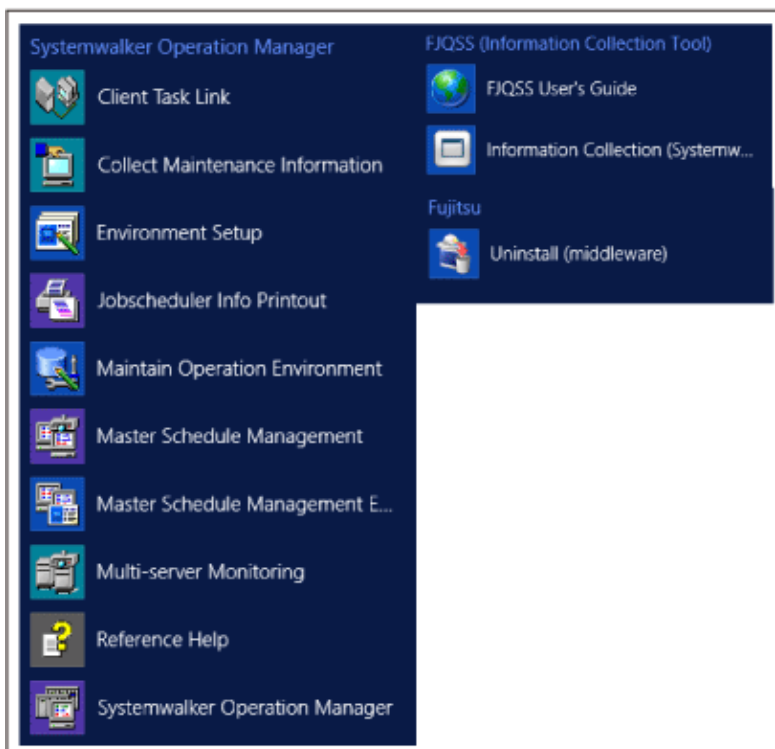
Description in the manual	Substitution in Windows(R) 7, or Windows Server 2008 or earlier
Start or Apps >> Systemwalker Operation Manager >> Systemwalker Operation Manager	Start >> All Programs >> Systemwalker Operation Manager >> Systemwalker Operation Manager
Start or Apps >> Systemwalker Operation Manager >> Action Environment Setup	Start >> All Programs >> Systemwalker Operation Manager >> Environment Setup >> Action Environment Setup
Start or Apps >> Systemwalker Operation Manager >> Environment Setup	Start >> All Programs >> Systemwalker Operation Manager >> Environment Setup >> Environment Setup
Start or Apps >> Systemwalker Operation Manager >> Task Link clients	Start >> All Programs >> Systemwalker Operation Manager >> Task Link clients
Start or Apps >> Systemwalker Operation Manager >> Print Jobscheduler Info	Start >> All Programs >> Systemwalker Operation Manager >> Print Jobscheduler Info
Start or Apps >> Systemwalker Operation Manager >> Multi-server Monitoring	Start >> All Programs >> Systemwalker Operation Manager >> Multi-server Monitoring

Description in the manual	Substitution in Windows(R) 7, or Windows Server 2008 or earlier
Start or Apps >> Systemwalker Operation Manager >> Collect Maintenance Information	Start >> All Programs >> Systemwalker Operation Manager >> Tools >> Collect Maintenance Information
Start or Apps >> Systemwalker Operation Manager >> Master Schedule Management Environment Setup	Start >> All Programs >> Systemwalker Operation Manager >> Environment Setup >> Master Schedule Management Environment Setup
Start or Apps >> Systemwalker Operation Manager >> Master Schedule Management	Start >> All Programs >> Systemwalker Operation Manager >> Master Schedule Management
Start or Apps >> Systemwalker Operation Manager >> Reference Help	Start >> All Programs >> Systemwalker Operation Manager >> Document >> Reference Help
Start or Apps >> FJQSS (Information Collection Tool) >> FJQSS User's Guide	Start >> All Programs >> FJQSS (Information Collection Tool) >> FJQSS User's Guide
Start or Apps >> FJQSS (Information Collection Tool) >> Information Collection (Systemwalker Operation Manager)	Start >> All Programs >> FJQSS (Information Collection Tool) >> Information Collection (Systemwalker Operation Manager)
Start or Apps >> Fujitsu >> Uninstall (middleware)	Start >> All Programs >> Fujitsu >> Uninstall (middleware)

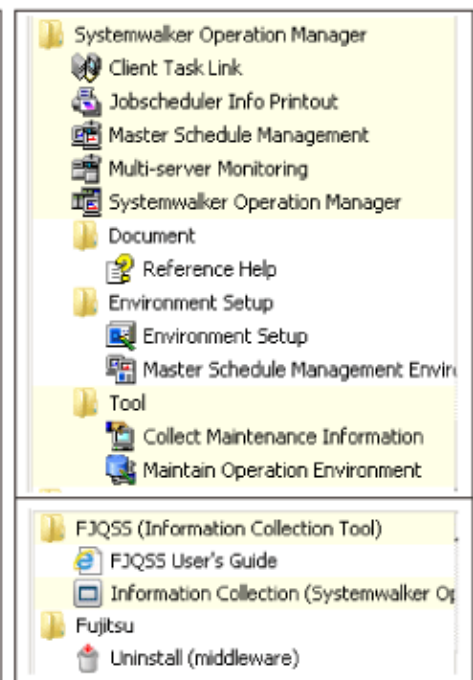
For the server [Windows]

The server menu is shown below.

"App" windows for Windows Server 2012



"Start" menu for Windows Server 2008



The items to be substituted for the server are shown below.

Description in the manual	Substitution in Windows(R) 7, or Windows Server 2008 or earlier
Start or Apps >> Systemwalker Operation Manager >> Systemwalker Operation Manager	Start >> All Programs >> Systemwalker Operation Manager >> Systemwalker Operation Manager
Start or Apps >> Systemwalker Operation Manager >> Operation Environment Maintenance	Start >> All Programs >> Systemwalker Operation Manager >> Tools >> Operation Environment Maintenance
Start or Apps >> Systemwalker Operation Manager >> Environment Setup	Start >> All Programs >> Systemwalker Operation Manager >> Environment Setup >> Environment Setup
Start or Apps >> Systemwalker Operation Manager >> Task Link clients	Start >> All Programs >> Systemwalker Operation Manager >> Task Link clients
Start or Apps >> Systemwalker Operation Manager >> Print Jobscheduler Info	Start >> All Programs >> Systemwalker Operation Manager >> Print Jobscheduler Info
Start or Apps >> Systemwalker Operation Manager >> Multi-server Monitoring	Start >> All Programs >> Systemwalker Operation Manager >> Multi-server Monitoring
Start or Apps >> Systemwalker Operation Manager >> Collect Maintenance Information	Start >> All Programs >> Systemwalker Operation Manager >> Tools >> Collect Maintenance Information
Start or Apps >> Systemwalker Operation Manager >> Master Schedule Management Environment Setup	Start >> All Programs >> Systemwalker Operation Manager >> Environment Setup >> Master Schedule Management Environment Setup
Start or Apps >> Systemwalker Operation Manager >> Master Schedule Management	Start >> All Programs >> Systemwalker Operation Manager >> Master Schedule Management
Start or Apps >> Systemwalker Operation Manager >> Reference Help	Start >> All Programs >> Systemwalker Operation Manager >> Document >> Reference Help
Start or Apps >> FJQSS (Information Collection Tool) >> FJQSS User's Guide	Start >> All Programs >> FJQSS (Information Collection Tool) >> FJQSS User's Guide
Start or Apps >> FJQSS (Information Collection Tool) >> Information Collection (Systemwalker Operation Manager)	Start >> All Programs >> FJQSS (Information Collection Tool) >> Information Collection (Systemwalker Operation Manager)
Start or Apps >> Fujitsu >> Uninstall (middleware)	Start >> All Programs >> Fujitsu >> Uninstall (middleware)