

FUJITSU Software Interstage Business Process Manager Analytics V12.2.1

A decorative horizontal band with a dark red background. It features several glowing, overlapping white and light red circular and elliptical patterns that create a sense of motion and depth.

Migration Guide

Linux

B1X1-0160-04ENZO(00)
December 2014

Preface

This chapter provides a general introduction to this user guide, describing its contents, such as an overview of the chapters, common terms used in the manual, and other related information to help you effectively use the guide.

Key concepts covered in this chapter are as follows:

- [Purpose of this Guide](#)
- [Target Audience](#)
- [Chapter Overview](#)
- [Typographical Conventions](#)
- [Reference Material](#)
- [Abbreviations](#)
- [Export Restrictions](#)
- [Registered Trademarks](#)
- [Request](#)
- [Copyright](#)

Purpose of this Guide

This user guide describes the procedure for migrating from an earlier version to the latest version of Analytics.

Target Audience

This manual is intended for use by the Analytics system administrator. It assumes that the reader has a working knowledge of the following:

- Operating system administration
- Application server management
- Database administration

Chapter Overview

Chapter	Title	Description
1	Overview	Lists some considerations for the migration procedure
2	Migrating from an Earlier to the Latest Version	Describes the procedure for migrating from an earlier version to the latest version of Interstage Business Process Manager Analytics (BPMA)
3	Using the Migration Command	Explains how to use the migration command
4	Migration Command Messages	Explains the messages output by the migration command

Typographical Conventions

The following conventions are used throughout this manual.

Example symbols	Description
command	Text that you are required to type at a command line; identified by the Courier font
screen text	Items visible in the user interface identified by the bold text
<i>Reference</i>	Reference material in italics

Example symbols	Description
Parameter	Command parameter identified by the Courier font

Reference Material

The following documentation is also available for this software.

Release Notes

Contains an overview of the software; also includes late-breaking information that could not be included in the manuals

Overview

Describes the architecture and features of the software

Installation Guide

Explains how to install and how to setup the software

Dashboard Guide

Explains how to use the Analytics Dashboard for displaying presentations

Analytics Studio Guide

Explains how to use the Analytics Studio to create definitions for the software

Management Console Guide

Explains how to use the Management Console and management commands to configure key parameters, start/stop the Analytics service, and display the software status

Process Discovery Guide

Provides an overview of, and explains how to use, Process Discovery

Handbook for the Process Discovery

Explains how to operate the Process Discovery briefly

Abbreviations

The following references for BPM Analytics are also available:

Name	Abbreviation
Microsoft(R) Windows Server(R) 2008 SP2 Enterprise Edition Microsoft(R) Windows Server(R) 2008 SP2 Standard Edition Microsoft(R) Windows Server(R) 2008 R2 Enterprise Microsoft(R) Windows Server(R) 2008 R2 Standard	Windows Server 2008, Windows Server
Microsoft(R) Windows Server(R) 2012 Datacenter Microsoft(R) Windows Server(R) 2012 Standard Microsoft(R) Windows Server(R) 2012 R2 Datacenter Microsoft(R) Windows Server(R) 2012 R2 Standard	Windows Server 2012, Windows Server
Microsoft(R) Windows(R) XP SP3 Professional operating system Microsoft(R) Windows(R) XP SP3 Home Edition operating system	Windows XP, Windows
Microsoft(R) Windows Vista(R) SP2 Ultimate Microsoft(R) Windows Vista(R) SP2 Enterprise Microsoft(R) Windows Vista(R) SP2 Business	Windows Vista, Windows
Microsoft(R) Windows(R) 7 Ultimate Microsoft(R) Windows(R) 7 Professional Microsoft(R) Windows(R) 7 Home Premium	Windows 7, Windows

Name	Abbreviation
Microsoft(R) Windows(R) 8 Enterprise Microsoft(R) Windows(R) 8 Pro Microsoft(R) Windows(R) 8	Windows 8, Windows
Microsoft(R) Windows(R) 8.1 Enterprise Microsoft(R) Windows(R) 8.1 Pro Microsoft(R) Windows(R) 8.1	Windows 8.1, Windows
Microsoft(R) Internet Explorer 7.0 Microsoft(R) Internet Explorer 8.0 Microsoft(R) Internet Explorer 9.0 Microsoft(R) Internet Explorer 10.0 Microsoft(R) Internet Explorer 11.0	Internet Explorer
Adobe Flash Player V11.3	Flash Player
Red Hat Enterprise Linux 5 Red Hat Enterprise Linux 6 Red Hat Enterprise Linux 7	Linux
Android 4.0.4	Android
i-OS6	iOS
Interstage Application Server Enterprise Edition Interstage Application Server Standard-J Edition	Interstage Application Server
Oracle WebLogic Server 12c	WebLogic
WebSphere Application Server Network Deployment V8.5	WebSphere
RedHat JBOSS Enterprise Application Platform 5.1.1	JBoss Enterprise Application Platform 5.1, JBoss
RedHat JBOSS Enterprise Application Platform 6.1.1	JBoss Enterprise Application Platform 6.1, JBoss
Interstage Business Process Manager	Interstage BPM
Interstage Service Integrator	ISI
Oracle Database 10g R2 Enterprise Edition Oracle Database 10g R2 Standard Edition Oracle Database 10g R2 Standard Edition One	Oracle 10g, Oracle
Oracle Database 11g R2 Enterprise Edition Oracle Database 11g R2 Standard Edition Oracle Database 11g R2 Standard Edition One	Oracle 11g, Oracle
Oracle Database 12c R1 Enterprise Edition Oracle Database 12c R1 Standard Edition Oracle Database 12c R1 Standard Edition One	Oracle 12c, Oracle
Microsoft SQL Server 2005 Enterprise Edition Microsoft SQL Server 2005 Standard Edition	SQL Server 2005, SQL Server
Microsoft SQL Server 2008 Enterprise Edition Microsoft SQL Server 2008 Standard Edition	SQL Server 2008, SQL Server
Microsoft SQL Server 2012 Enterprise Edition Microsoft SQL Server 2012 Standard Edition	SQL Server 2012, SQL Server
Symfoware V11 Enterprise Edition Symfoware V11 Standard Edition Symfoware V12 Standard Edition	Symfoware Server, Symfoware
PostgreSQL 9.1	PostgreSQL

Export Restrictions

This document may contain specific technology relating to products controlled by the Foreign Exchange and Foreign Trade Acts. In cases where it does contain the specified technology, this document or a portion thereof must not be exported or provided to nonresidents without authorization in accordance with such laws.

Registered Trademarks

- Microsoft, Windows, and Windows Server are trademarks or registered trademarks of Microsoft Corporation in the United States and other countries.
- Oracle and Java are registered trademarks of Oracle and/or affiliates. Other names may be trademarks of their respective owners.
- Linux is a registered trademark or trademark of Linus Torvalds in the United States and other countries.
- Red Hat is a trademark or registered trademark of Red Hat Inc. in the United States and other countries.
- SQL Server is a Microsoft Corporation (USA) product.
- Other company names and product names used in this document are trademarks or registered trademarks of their respective owners.

Request

- This document may be modified without notice.
- Please do not give copies of this manual to other people without permission.
- Fujitsu is not responsible for any third-party infringement of patents or other rights arising out of use of the data in this manual.

Copyright

Copyright 2014 FUJITSU LIMITED

December 2014 First Edition

Contents

Chapter 1 Overview.....	1
1.1 Target Versions.....	1
1.2 Notes.....	1
Chapter 2 Migrating from V12.1 to the Latest Version.....	2
2.1 Migration Flow.....	2
2.2 Migration Procedure.....	3
2.2.1 Backing Up Earlier Version Resources.....	3
2.2.1.1 Preparing for resource backup.....	3
2.2.1.2 Backing Up Earlier Version Resources.....	4
2.2.2 Uninstalling Earlier Versions.....	4
2.2.3 Installing the Latest Version.....	4
2.2.4 Restoring the Backed Up Resources.....	4
2.2.5 Starting the Analytics Runtime Environment.....	5
2.2.6 Re-setup for Integration with Interstage BPM (Optional).....	6
Chapter 3 Migrating from V12.0 to the Latest Version.....	7
3.1 Migration Flow.....	7
3.2 Migration Procedure.....	8
3.2.1 Backing Up Earlier Version Resources.....	8
3.2.1.1 Preparing for resource backup.....	8
3.2.1.2 Backing up earlier version resources.....	9
3.2.1.3 Exporting the model of Process Discovery(Optional).....	10
3.2.2 Uninstalling Earlier Versions.....	10
3.2.3 Installing the Latest Version.....	10
3.2.4 Restoring the Backed Up Resources.....	10
3.2.4.1 Stopping the Analytics runtime environment.....	10
3.2.4.2 Restoring the backed up resources.....	11
3.2.5 Recreating table space of Process Discovery(Optional).....	12
3.2.6 Starting the Analytics Runtime Environment.....	12
3.2.7 Creating tables of Process Discovery(Optional).....	13
3.2.8 Importing the model of Process Discovery(Optional).....	13
3.2.9 Re-setup for Integration with Interstage BPM (Optional).....	13
Chapter 4 Migrating from V11.1 to the Latest Version.....	14
4.1 Migration Flow.....	14
4.2 Migration Procedure.....	14
4.2.1 Backing Up Earlier Version Resources.....	15
4.2.1.1 Preparing for resource backup.....	15
4.2.1.1.1 Modifying the JDBC driver.....	15
4.2.1.2 Backing up earlier version resources.....	15
4.2.2 Uninstalling Earlier Versions.....	16
4.2.3 Installing the Latest Version.....	16
4.2.4 Executing the Migration Command.....	16
4.2.4.1 Stopping the Analytics runtime environment.....	16
4.2.4.2 Executing the migration command.....	17
4.2.5 Starting the Analytics Runtime Environment.....	17
4.2.6 Re-setup for Integration with Interstage BPM (Optional).....	17
4.3 Recovering Event Data.....	18
4.3.1 Event Data Recovery Method.....	18
Chapter 5 Using the Migration Command.....	19

5.1 Migration Command..... 19

Chapter 6 Migration Command Messages..... 21

Chapter 1 Overview

This chapter lists certain considerations for migrating from an earlier version of Interstage Business Process Manager Analytics (BPMA) to the latest version.

1.1 Target Versions

Earlier versions that are suitable for migration include:

- Interstage BPM Analytics Server V11.1 (Windows)
- Interstage BPM Analytics Server V11.1 (Linux)
- Interstage BPM Analytics Server V12.0 (Windows)
- Interstage BPM Analytics Server V12.0 (Linux)
- Interstage BPM Analytics Server V12.1 (Windows)
- Interstage BPM Analytics Server V12.1 (Linux)

1.2 Notes

Note following points in case migrating from V11.1

- The settings related to log output (recording log level, log file volume, maximum number of backup files) are not migrated. If any changes need to be made to the log output settings from the default status, configure the settings again after migration.
- Dashboard users and Analytics Studio users are integrated in V12.1. Migration tool will automatically remove Studio users in case user with same User ID exists in the system while migrating. Create Analytics Studio user manually from Management Console if necessary.
- If performing RDB updated record monitoring operations, a unique key setting for the relevant event will be enabled at the time of migration.
Data that was being monitored before migration will be automatically backed up by the unique key settings. Refer to "[4.3 Recovering Event Data](#)", "Migrating from an Earlier to the Latest Version" for details on how to restore backed up data.

Note following points in case migrating from V12.0

- After migration, if the schedule information displayed in the tooltip in the Element Navigation pane is different than the configured value, saving the definition again will set it to the correct value.

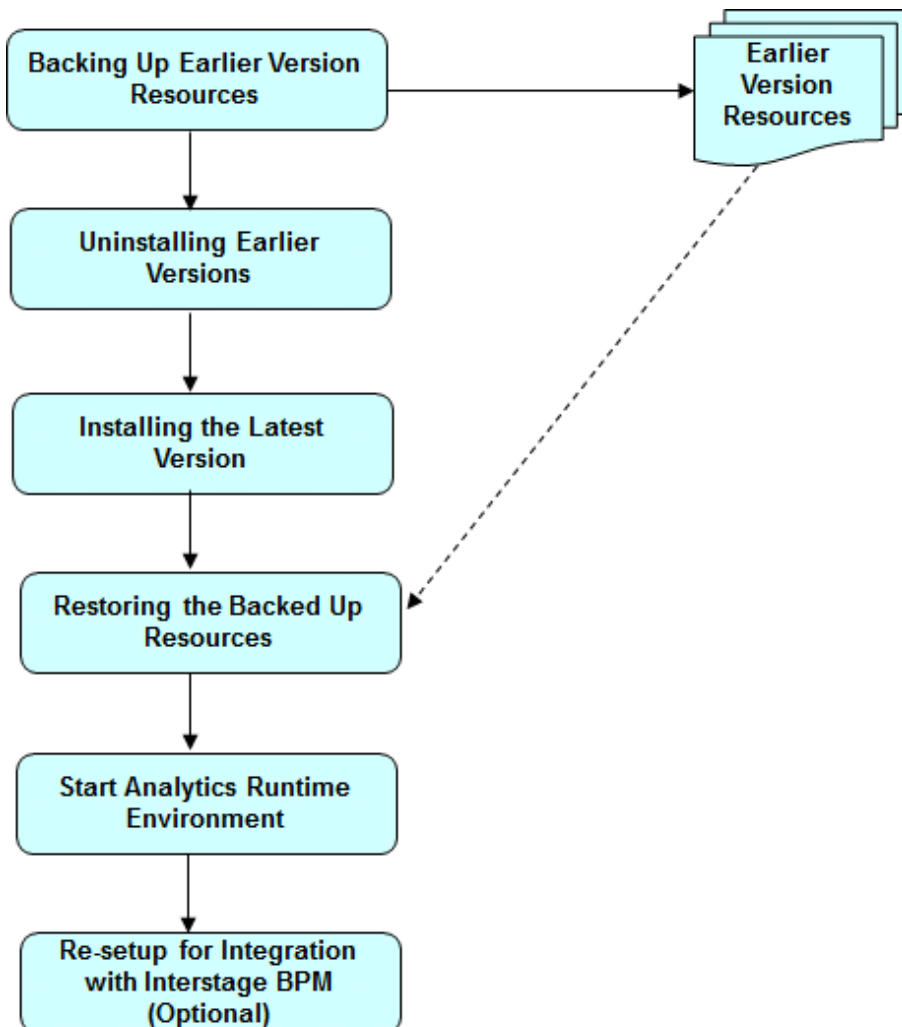
Chapter 2 Migrating from V12.1 to the Latest Version

This chapter describes the procedure for migrating from an earlier version of Interstage Business Process Manager Analytics (BPMA) to the latest version.

2.1 Migration Flow

The flow of migration is as follows:

1. [2.2.1 Backing Up Earlier Version Resources](#)
2. [2.2.2 Uninstalling Earlier Versions](#)
3. [2.2.3 Installing the Latest Version](#)
4. [2.2.4 Restoring the Backed Up Resources](#)
5. [2.2.5 Starting the Analytics Runtime Environment](#)
6. [2.2.6 Re-setup for Integration with Interstage BPM \(Optional\)](#)



Information

Migration command which describing in [5.1 Migration Command](#) is not required in case migrating from V12.1 to V12.2.

2.2 Migration Procedure

This describes the procedure for migrating.



Note

Please refer to "did NOT use Built-in database" In case using Built-in database in V12.0 and migrated from V12.0 to V12.1.

2.2.1 Backing Up Earlier Version Resources

2.2.1.1 Preparing for resource backup

Log in to the Management Console, and change the run type for all connections to **Manual**.

This prevents the connection information from starting immediately after migration.

Modify Connection
Modify the Connection details.

Name *	<input type="text" value="Text Connection"/>
Connection Type *	Text
Description	<input type="text"/>
Sensor System	LOCALHOST
Starting mode	AUTOMATIC
Parameters for the target system No parameters exist for the target system. Please set the parameters using Analytics Studio.	
Pushing Parameters to the Analytics Server	
Pushing Event Intervals (secs) *	<input type="text" value="0"/>



Note

Please stop the Sensor if Remote sensor or Windows Service Edition Text File Sensor was used.

- Remote sensor

Perform the following procedure on the host where the remote sensor is running:

- Stop the work unit

Stop the **IBPMMSensor** work unit using the Interstage Management Console.

- Windows Service Edition Text File Sensor
 - Stop the service

Use the Services window to stop the Interstage BPM Analytics Text File Sensor service.

2.2.1.2 Backing Up Earlier Version Resources

Refer to "Backup Procedure", "Maintaining Analytics" in the *Interstage Business Process Manager Analytics V12.1 Administration Guide* to back up the resources listed below. Note that backup is not required for items that are not configured and are not Analytics Server resources.

- Analytics Server
- Analytics database



Please backup Built-in database in case Built-in database was used in V12.1.



Although resources of the Analytics database are not used in the migration procedure if Built-in database was NOT used in V12.1, perform a backup in case unexpected problems occur during the migration process and to avoid data loss after migration.

2.2.2 Uninstalling Earlier Versions

Uninstall earlier versions in accordance, "Uninstalling Interstage BPM Analytics" in the *Interstage Business Process Manager Analytics V12.1 Installation Guide*.



Do not uninstall remote sensor in case using remote sensor. Upgrade is not required since remote sensor service is not provided in BPMA V12.2.

2.2.3 Installing the Latest Version

Install the latest version and deploy it to the application server in accordance, "Installing and Setting Up Analytics Server" in the *Interstage Business Process Manager Analytics V12.2 Installation Guide*.



Install the latest version of Analytics by clearing the checkbox "Use a Built-in database" ON if Built-in database was used in V12.1.

2.2.4 Restoring the Backed Up Resources

Refer to "Restore Procedure", "Maintaining Analytics" in the *Interstage Business Process Manager Analytics V12.2 Administration Guide* to restore the resources listed below.

- Analytics Server
- Analytics database (If Built-in database was used in V12.1)



Note

Backup/Restore command does not support earlier version of Analytics database. Refer to "Restoring Built-in Database (In case using V12.1 backup resources)", "Maintaining the Built-in Database" in the *Interstage Business Process Manager Analytics V12.2 Administration Guide* in case restoring from earlier version of Analytics database. Additional steps are required in case of using Process Discovery and workspace directory of Analytics Server differs with backup point. Refer to the last portion of "Restoring the analytics Database", "Restore Procedure", "Backing Up and Restoring the Environment" in the *Interstage Business Process Manager Analytics V12.2 Administration Guide*.

2.2.5 Starting the Analytics Runtime Environment

After migrating the resources, start the runtime environment where the Analytics Server is deployed.

Remote sensor

Perform the following procedure on the host where the remote sensor is running:

- Start the work unit

Start the **IBPMMSensor** work unit using the Interstage Management Console.

Windows Service Edition Text File Sensor

- Start the service

Use the **Services** window to start the **Interstage BPM Analytics Text File Sensor** service.

Background service (Rule Engine) program

Perform the following procedure on the Analytics Server:

- For Windows

Use the **Services** window to start the **Interstage BPM Analytics eRule Engine** service.

- For Linux

Execute the following command:

```
/opt/FJSVibpma/etc/FJSVibpma.server start
```

Analytics Server

Start Analytics Server using the `aps_start` command.

Refer to "Management Command Line User Interface" in the *Interstage Business Process Manager Analytics V12.2 Management Console Guide* for details about the command.



Note

Additional steps are required in case using Built-in Application Server in latest version.

Refer to "When Using a Built-in Application Server", "Installing and Setting Up Analytics Server" in the *Interstage Business Process Manager Analytics V12.2 Installation Guide* for details.

Edit the startup script for Built-in Analytics Server in case using Built-in DB in earlier version on Linux.

1. Stop Analytics Server

Execute the following command:

```
/opt/FJSVibpma/etc/FJSVibpma.IBPMMServer stop
```

2. Edit the startup script

Edit the script file stored in following path:

/opt/FJSVibpma/etc/FJSVibpma.IBPMMServer

Change the value of the following parameter to "yes".

IBPMA_USE_SYMFOWARE_DB

Example: IBPMA_USE_SYMFOWARE_DB=yes

3. Start Analytics Server

Execute the following command:

/opt/FJSVibpma/etc/FJSVibpma.IBPMMServer start

2.2.6 Re-setup for Integration with Interstage BPM (Optional)

In case using Interstage BPM link in earlier version, re-setup of Interstage BPM link after migrating to latest version is required.

Refer to "Settings for Integration with Related Products", "Installing and Setting Up Analytics Server" in the "*Interstage Business Process Manager Analytics V12.2 Installation Guide*" for details.



Do not operate Analytics Studio until re-setup of Interstage BPM link is done.

Chapter 3 Migrating from V12.0 to the Latest Version

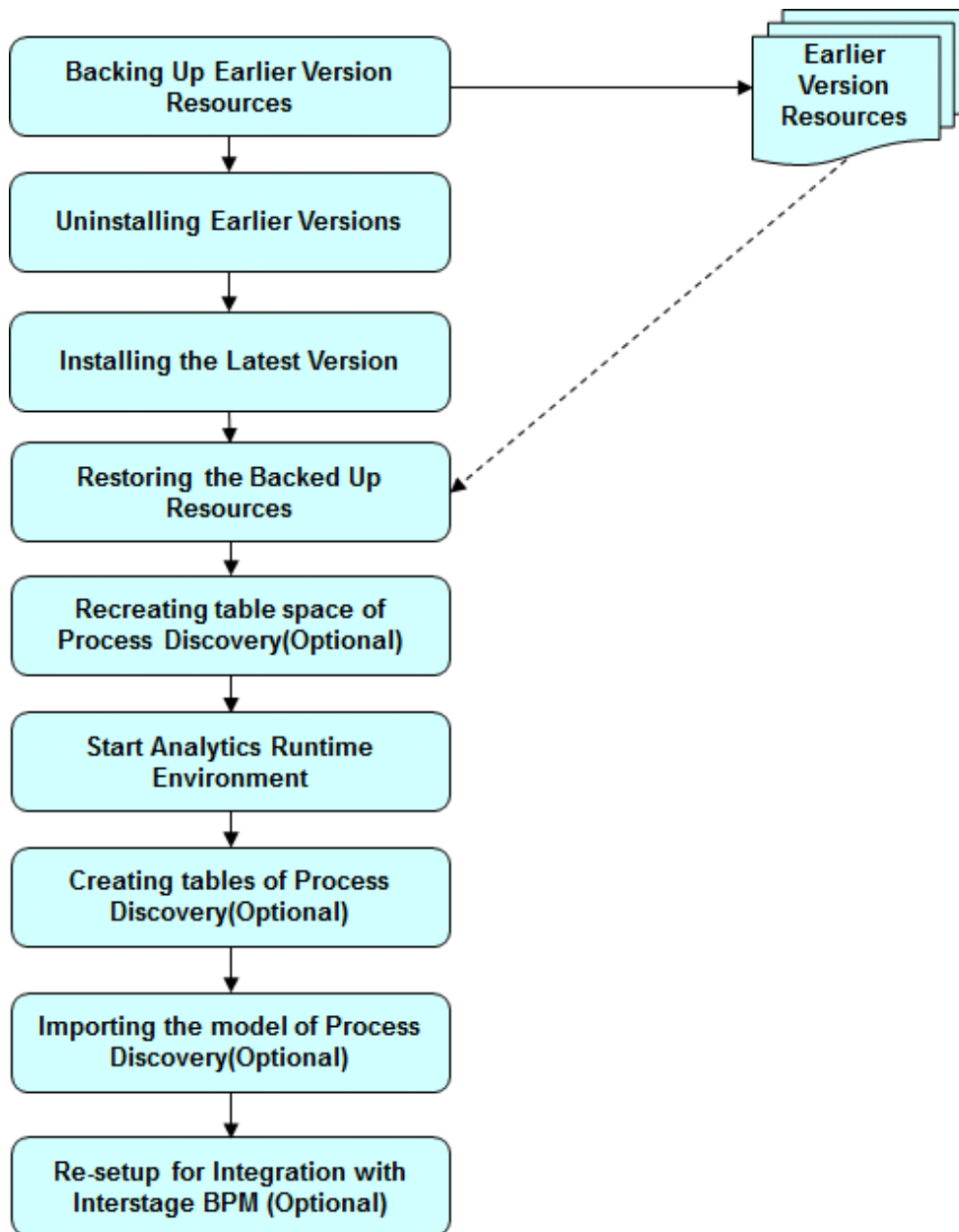
This chapter describes the procedure for migrating from an earlier version of Interstage Business Process Manager Analytics (BPMA) to the latest version.

3.1 Migration Flow

The flow of migration is as follows:

1. [3.2.1 Backing Up Earlier Version Resources](#)
2. [3.2.1.3 Exporting the model of Process Discovery\(Optional\)](#)
3. [3.2.3 Installing the Latest Version](#)
4. [3.2.4 Restoring the Backed Up Resources](#)
5. [3.2.5 Recreating table space of Process Discovery\(Optional\)](#)
6. [3.2.6 Starting the Analytics Runtime Environment](#)
7. [3.2.7 Creating tables of Process Discovery\(Optional\)](#)
8. [3.2.8 Importing the model of Process Discovery\(Optional\)](#)

9. 3.2.9 Re-setup for Integration with Interstage BPM (Optional)



Information

Migration command which describing in [5.1 Migration Command](#) is not required in case migrating from V12.0 to V12.2.

3.2 Migration Procedure

This describes the procedure for migrating.

3.2.1 Backing Up Earlier Version Resources

3.2.1.1 Preparing for resource backup

Log in to the Management Console, and change the run type for all connections to **Manual**.

This prevents the connection information from starting immediately after migration.

Modify Connection
Modify the Connection details.

Name *	<input type="text" value="Text Connection"/>
Connection Type *	Text
Description	<input type="text"/>
Sensor System	LOCALHOST
Starting mode	AUTOMATIC
Parameters for the target system	
No parameters exist for the target system. Please set the parameters using Analytics Studio.	
Pushing Parameters to the Analytics Server	
Pushing Event Intervals (secs) *	<input type="text" value="0"/>

Note

Please stop the Sensor if Remote sensor or Windows Service Edition Text File Sensor was used.

- Remote sensor

Perform the following procedure on the host where the remote sensor is running:

- Stop the work unit

Stop the **IBPMMSensor** work unit using the Interstage Management Console.

- Windows Service Edition Text File Sensor

- Stop the service

Use the Services window to stop the Interstage BPM Analytics Text File Sensor service.

3.2.1.2 Backing up earlier version resources

Refer to "Backing Up the Interstage BPM Analytics Server Environment", "Maintaining" in the *Interstage Business Process Manager Analytics V12.0 Administration Guide* to back up the resources listed below. Note that backup is not required for items that are not configured and are not Analytics Server resources.

- Analytics Server
- Analytics database (for restoration)

Point

Although resources of the Analytics database are not used in the migration procedure, perform a backup in case unexpected problems occur during the migration process and to avoid data loss after migration.

3.2.1.3 Exporting the model of Process Discovery(Optional)

Refer to "Importing and Exporting Models","Appendix Commands" in the *Interstage Business Process Manager Analytics V12.0 Process Discovery Guide* and export the model of Process Discovery in case of using Process Discovery.

3.2.2 Uninstalling Earlier Versions

Uninstall earlier versions in accordance, "Uninstalling Interstage BPM Analytics" in the *Interstage Business Process Manager Analytics V12.0 Installation Guide*.

Note

Do not perform the procedure covered in "Deleting the Interstage BPM Analytics Server Databases", "Tasks required after uninstalling" in the *Interstage Business Process Manager Analytics V12.0 Installation Guide*.

This is because you might need to reuse the data from the database after migration.

Note

Do not uninstall remote sensor in case using remote sensor. Upgrade is not required since remote sensor service is not provided in BPMA V12.2.

3.2.3 Installing the Latest Version

Install the latest version and deploy it to the application server in accordance, "Installing and Setting Up Analytics Server" in the *Interstage Business Process Manager Analytics V12.2 Installation Guide*.

Note

Install the latest version of Analytics by clearing the checkbox "Use a Built-in database" off.

3.2.4 Restoring the Backed Up Resources

Restore the backed up resources.

3.2.4.1 Stopping the Analytics runtime environment

Before migrating, stop the runtime environment to which the Analytics Server has been deployed.

Analytics Server

Stop Analytics Server using the `aps_stop` command.

Refer to "Management Command Line User Interface" in the *Interstage Business Process Manager Analytics V12.2 Management Console Guide* for details about the command.

Background service (Rule Engine) program

Perform the following procedure on the Analytics Server host:

- For Windows

Use the **Services** window to stop the **Interstage BPM Analytics eRule Engine**.

- For Linux

Execute the following command:

```
/opt/FJSVibpma/etc/FJSVibpma.server stop
```

3.2.4.2 Restoring the backed up resources

Restore the backed up resources to the latest version.

- For Windows

Preparing backed up resources

Prepare backed up resources in following directory structure.

```
BPMBBackup/conf  
BPMBBackup/agent  
BPMBBackup/ibpmm_data
```

Creating configuration file

Create a text file named "backup.ini" and place it to "BPMBBackup" directory with content described below:

```
DeployDirectory="<V12.2 deployment destination directory>"
```

Example: DeployDirectory="C:/ibpmm_data/tomcat6/webapps/ibpmm"

Run restoring

Restore the backed up resources using bpmrestore command.

Refer to "Management Command Line User Interface" in the *Interstage Business Process Manager Analytics V12.2 Management Console Guide* for details of the command.

- For Linux

Run restoring

Restore the backed up resources to the latest version environment. In this case, the resources are restored manually.

Refer to "Restoring the Environment", "Maintaining" in the *Interstage Business Process Manager Analytics V12.0 Administration Guide* for details.



Restore bpme directory from backup.

Example) bpme backup directory : /BPMBBackup/ibpmm_data/bpme



[Windows/Linux]

After restoring, replace the file of the same name in the replacement directory by the following replacement file.

After replacement, set the log settings.

- Replacement file

```
<V12.2 deployment destination directory>/conf.org/log/BPM_Log4jConfiguration.xml
```

- Replacement directory

```
<V12.2 deployment destination directory>/conf/log/
```

3.2.5 Recreating table space of Process Discovery(Optional)

Recreate the same table space of Process Discovery in case of using Process Discovery before migrating. The example of using built-in database is shown below.

```
set RDBNAME=BPMA
```

```
rdbexecsql -s EBPMDDB -u BPMUSER
```

Please input PW1234 after requiring password.

```
SQL>drop schema PDSHEMA cascade
```

```
SQL>create schema PDSHEMA
```

3.2.6 Starting the Analytics Runtime Environment

After migrating the resources, start the runtime environment where the Analytics Server is deployed.

Remote sensor

Perform the following procedure on the host where the remote sensor is running:

- Start the work unit

Start the **IBPMMSensor** work unit using the Interstage Management Console.

Windows Service Edition Text File Sensor

- Start the service

Use the **Services** window to start the **Interstage BPM Analytics Text File Sensor** service.

Background service (Rule Engine) program

Perform the following procedure on the Analytics Server:

- For Windows

Use the **Services** window to start the **Interstage BPM Analytics eRule Engine** service.

- For Linux

Execute the following command:

```
/opt/FJSVibpma/etc/FJSVibpma.server start
```

Analytics Server

Start Analytics Server using the `aps_start` command.

Refer to "Management Command Line User Interface" in the *Interstage Business Process Manager Analytics V12.2 Management Console Guide* for details about the command.



Note

Add the following JDBC driver in case using Built-in DB in earlier version.

```
<Installation CD route directory of the earlier version>/IBPMM/SymfoV10/fjjdbc/fjsymjdbc3.jar
```

Refer to "Set up JDBC driver on the server", "Installing and Setting Up Analytics Server" in the *Interstage Business Process Manager Analytics V12.2 Installation Guide* for details.



Note

Restart Analytics Server again for Linux after completing to start Analytics Server to load necessary libraries.



Note

Additional steps are required in case using Built-in Application Server in latest version.

Refer to "When Using a Built-in Application Server", "Installing and Setting Up Analytics Server" in the *Interstage Business Process Manager Analytics V12.2 Installation Guide* for details.

Edit the startup script for Built-in Analytics Server in case using Built-in DB in earlier version on Linux.

1. Stop Analytics Server

Execute the following command:

```
/opt/FJSVibpma/etc/FJSVibpma.IBPMMServer stop
```

2. Edit the startup script

Edit the script file stored in following path:

```
/opt/FJSVibpma/etc/FJSVibpma.IBPMMServer
```

Change the value of the following parameter to "yes".

```
IBPMA_USE_SYMFOWARE_DB
```

Example: IBPMA_USE_SYMFOWARE_DB=yes

3. Start Analytics Server

Execute the following command:

```
/opt/FJSVibpma/etc/FJSVibpma.IBPMMServer start
```

3.2.7 Creating tables of Process Discovery(Optional)

Refer to "Table Management", "Database Management", "System Setting" in the *Interstage Business Process Manager Analytics V12.2 Management Console Guide* and create tables of Process Discovery in case of using Process Discovery before migrating.

3.2.8 Importing the model of Process Discovery(Optional)

Refer to "Importing and Exporting Models", "Appendix Commands" in the *Interstage Business Process Manager Analytics V12.2 Process Discovery Guide* and import the model of Process Discovery in case of using Process Discovery.

3.2.9 Re-setup for Integration with Interstage BPM (Optional)

In case using Interstage BPM link in earlier version, re-setup of Interstage BPM link after migrating to latest version is required.

Refer to "Settings for Integration with Related Products", "Installing and Setting Up Analytics Server" in the *"Interstage Business Process Manager Analytics V12.2 Installation Guide"* for details.



Note

Do not operate Analytics Studio until re-setup of Interstage BPM link is done.

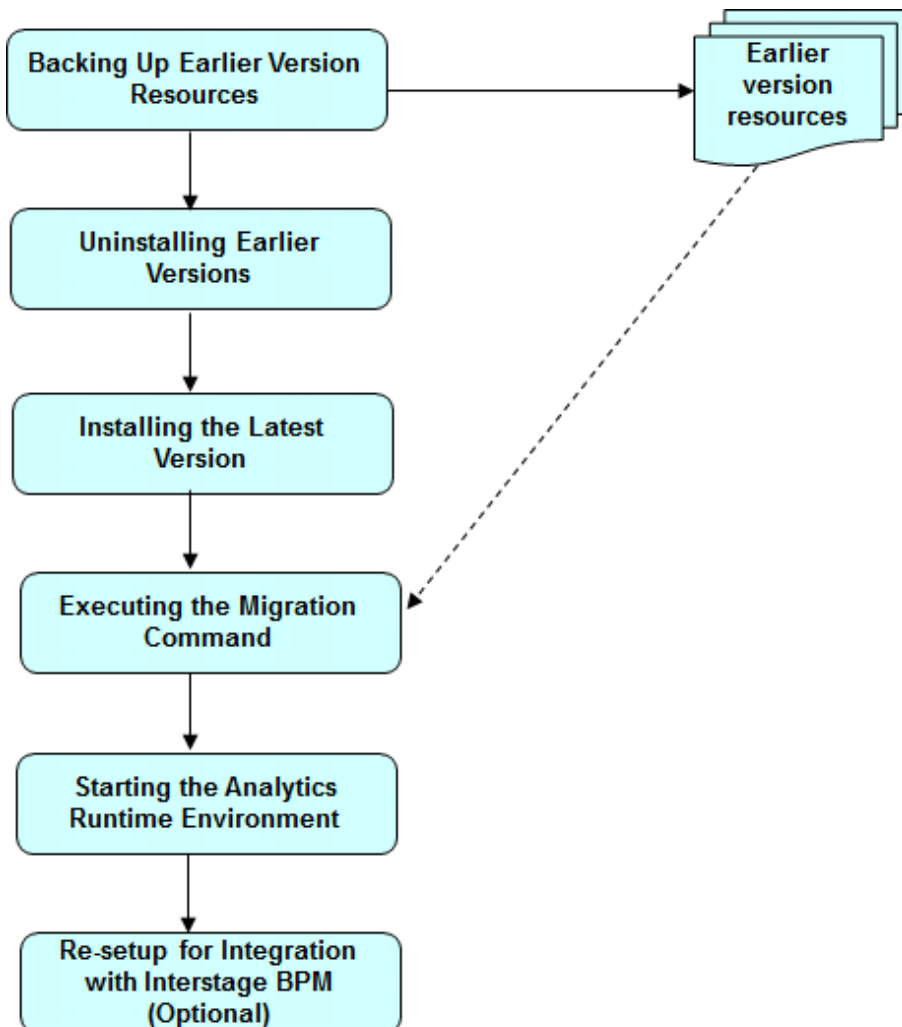
Chapter 4 Migrating from V11.1 to the Latest Version

This chapter describes the procedure for migrating from an earlier version of Interstage Business Process Manager Analytics (BPMA) to the latest version.

4.1 Migration Flow

The flow of migration is as follows:

1. [4.2.1 Backing Up Earlier Version Resources](#)
2. [4.2.2 Uninstalling Earlier Versions](#)
3. [4.2.3 Installing the Latest Version](#)
4. [4.2.4 Executing the Migration Command](#)
5. [4.2.5 Starting the Analytics Runtime Environment](#)
6. [4.2.6 Re-setup for Integration with Interstage BPM \(Optional\)](#)



4.2 Migration Procedure

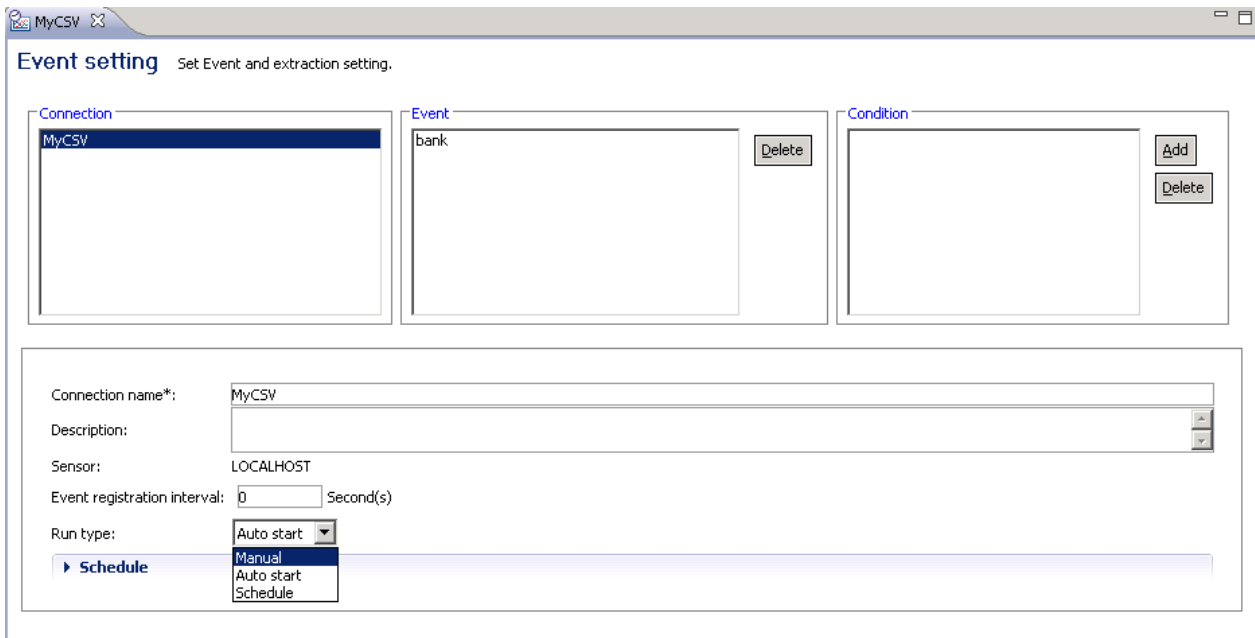
This describes the procedure for migrating.

4.2.1 Backing Up Earlier Version Resources

4.2.1.1 Preparing for resource backup

Start the Analytics Studio, and change the run type for all connections to **Manual**.

This prevents the connection information from starting immediately after migration.



Note

Please stop the Sensor if Remote sensor or Windows Service Edition Text File Sensor was used.

- Remote sensor

Perform the following procedure on the host where the remote sensor is running:

- Stop the work unit
 - Stop the **IBPMMSensor** work unit using the Interstage Management Console.
- Windows Service Edition Text File Sensor
 - Stop the service
 - Use the Services window to stop the Interstage BPM Analytics Text File Sensor service.

4.2.1.1.1 Modifying the JDBC driver

If you are using SQL Server as the database, check the JDBC driver being used. As sqljdbc.jar cannot be used in V12.2, replace it with sqljdbc4.jar.

4.2.1.2 Backing up earlier version resources

Refer to "Backing Up the Interstage BPM Analytics Server Environment", "Maintaining" in the *Interstage Business Process Manager Analytics V11.1 Administration Guide* to back up the resources listed below. Note that backup is not required for items that are not configured and are not Analytics Server resources.

- Analytics Server
- Analytics database (for restoration)

Point

Although resources of the Analytics database are not used in the migration procedure, perform a backup in case unexpected problems occur during the migration process and to avoid data loss after migration.

4.2.2 Uninstalling Earlier Versions

Uninstall earlier versions in accordance, "Uninstalling Interstage BPM Analytics" in the *Interstage Business Process Manager Analytics V11.1 Installation Guide*.

Note

Do not perform the procedure covered in "Deleting the Interstage BPM Analytics Server Databases", "Tasks required after uninstalling" in the *Interstage Business Process Manager Analytics V11.1 Installation Guide*.

This is because you might need to reuse the data from the database after migration.

Note

Do not uninstall remote sensor in case using remote sensor. Upgrade is not required since remote sensor service is not provided in BPMA V12.2.

4.2.3 Installing the Latest Version

Install the latest version and deploy it to the application server in accordance, "Installing and Setting Up Analytics Server" in the *Interstage Business Process Manager Analytics V12.2 Installation Guide*.

Note

Install the latest version of Analytics by clearing the checkbox "Use a Built-in database" off.

4.2.4 Executing the Migration Command

Execute the migration command to migrate the backed up resources.

4.2.4.1 Stopping the Analytics runtime environment

Before migrating, stop the runtime environment to which the Analytics Server has been deployed.

Analytics Server

Stop Analytics Server using the `aps_stop` command.

Refer to "Management Command Line User Interface" in the *Interstage Business Process Manager Analytics V12.2 Management Console Guide* for details about the command.

Background service (Rule Engine) program

Perform the following procedure on the Analytics Server host:

- For Windows

Use the **Services** window to stop the **Interstage BPM Analytics eRule Engine**.

- For Linux

Execute the following command:

```
/opt/FJSVibpma/etc/FJSVibpma.server stop
```

4.2.4.2 Executing the migration command

Execute the migration command on the Analytics Server to migrate the already backed up resources from the earlier version to the latest version.

The migration command is a command line tool that starts the program at the command prompt.

Refer to "[Chapter 5 Using the Migration Command](#)" for details about the command.

4.2.5 Starting the Analytics Runtime Environment

After migrating the resources, start the runtime environment where the Analytics Server is deployed.

Remote sensor

Perform the following procedure on the host where the remote sensor is running:

- Start the work unit

Start the **IBPMMSensor** work unit using the Interstage Management Console.

Windows Service Edition Text File Sensor

- Start the service

Use the **Services** window to start the **Interstage BPM Analytics Text File Sensor** service.

Background service (Rule Engine) program

Perform the following procedure on the Analytics Server:

- For Windows

Use the **Services** window to start the **Interstage BPM Analytics eRule Engine** service.

- For Linux

Execute the following command:

```
/opt/FJSVibpma/etc/FJSVibpma.server start
```

Analytics Server

Start Analytics Server using the `aps_start` command.

Refer to "Management Command Line User Interface" in the *Interstage Business Process Manager Analytics V12.2 Management Console Guide* for details about the command.

4.2.6 Re-setup for Integration with Interstage BPM (Optional)

In case using Interstage BPM link in earlier version, re-setup of Interstage BPM link after migrating to latest version is required.

Refer to "Settings for Integration with Related Products", "Installing and Setting Up Analytics Server" in the *Interstage Business Process Manager Analytics V12.2 Installation Guide* for details.



Note

Do not operate Analytics Studio until re-setup of Interstage BPM link is done.

4.3 Recovering Event Data

If performing RDB updated record monitoring operations in V11.1, unique key settings for the relevant event will be enabled at the time of migration.

Data that was being monitored before migration will be automatically backed up by unique key settings, making it unusable.

This section explains how to restore backed up event data.

4.3.1 Event Data Recovery Method

Use the following procedure to restore event data that was automatically backed up when the data was migrated.

Note that you can perform restoration only when the runtime environment in which the Analytics Server is deployed has stopped.

Refer to "[4.2.4.1 Stopping the Analytics runtime environment](#)" for details about how to stop the Analytics runtime environment.

1. Specifying target event table names

In the Management Console, go to:

Analytics System > Current Status > Data Status (tab)

Next, click the target event to display **Data Status Details** and check the table name.

2. Specifying backed up tables

Referring to the table for the event storage DB, specify the backed up tables named in accordance with the rules below and starting from names selected in step 1.

If there are multiple backed up tables, select the most recent.

Naming rules are as follows:

Table name position	Content
Characters 1 to 16 from the beginning of the table name	Table name in step 1
Characters 16 to 28 of the table name	Back up time and date (YYMMDDhhmmss)

Example: When backed up at: 2012-05-22 10:30:12

120522103012

3. Migrating event data

Migrate records from the backed up tables to the target event tables in conformance with the DB vendor's data migration procedures.

Chapter 5 Using the Migration Command

This chapter describes the migration command.

5.1 Migration Command

bpmmmigrate2v12

Purpose

This command allows Analytics to support operations in the V12.2 environment for V11.1 resources that have been converted to the V12.2 format.

Command name

bpmmmigrate2v12

Format

bpmmmigrate2v12 -M *DeployedDirectory* -a *AgentDirectory* -c *ConfDirectory* -i *WorkDirectory* -p *AdminPassword*

Parameter description

-M *DeployedDirectory*

V12.2 deployment destination directory (mandatory)

Example: C:\ibpmm_data\tomcat6\webapps\ibpmm

-a *AgentDirectory*

Path of the agent directory of the deployment destination within V11.1 backup resources (mandatory)

-c *ConfDirectory*

Path of the conf directory of the deployment destination within V11.1 backup resources (mandatory)

-i *WorkDirectory*

Path of the workspace directory within V11.1 backup resources (mandatory)

Example)

- For Windows

[Path of the backup resources]/ibpmm_data

- For Linux

[Path of the backup resources]/ibpmm_data/data

-p *AdminPassword*

Password of the superuser specified when V12.2 was installed (mandatory)

Example

The storage destination for the migration command is as follows:

[Installation directory]\BPMMigrationUtil

Note

Execute migration command by moving your current directory to the path where executable file of migration command is stored.

The storage destination for the migration command is as follows:

[Installation directory]\BPMMigrationUtil\bin

Messages are output to the standard output.

The results for this command are displayed as follows.

```
> bpmmmigrate2v12 -M C:\Interstage\J2EE\var\deployment\ijserver\IBPMMServer\apps\ibpmm.war -a C:\BPMBackup\agent -c C:\BPMBackup\conf -i C:\BPMBackup\ibpm_data -p XXX
BUPG0001: Start migration processing.
BUPG0003: Start repository conversion. (Path: C:\BPMBackup\ibpmm_data)
BUPG0004: Completed repository conversion (Path: C:\BPMBackup\ibpmm_data)
BUPG0011: Start conf directory conversion. (Path: C:\BPMBackup\conf)
BUPG0012: Completed conf directory conversion. (Path: C:\BPMBackup\conf)
BUPG0007: Start agent directory conversion. (Path: C:\BPMBackup\agent)
BUPG0008: Completed agent directory conversion. (Path: C:\BPMBackup\agent)
BUPG0015: Start DB structure conversion. (DB type: EVENTDB)
BUPG0016: Completed DB structure conversion (DB type: EVENTDB)
BUPG0005: Apply repository to the system.
BUPG0006: Applied repository to the system.
BUPG0009: Apply agent directory to the system.
BUPG0010: Applied agent directory to the system.
BUPG0013: Apply conf directory to the system.
BUPG0014: Applied conf directory to the system.
BUPG0002: Completed migration processing.
```

Return values

Normal: 0

Abnormal: An integer other than 0 is returned.

Notes

- Before executing the command, stop the Analytics runtime environment.
- When the command is executed, the directory to be converted is automatically backed up. It is saved with the character string ".org" added to the original directory name.
If retrying the command, revert all these directories to their original directory names.

The directories targeted for backup include:

- <V12.2 Deployment Destination Directory>\agent
- <V12.2 Deployment Destination Directory>\conf
- <V12.2 Workspace Directory>\davroot
- <V11.1 Workspace Directory in Backup Resources>\davroot

Chapter 6 Migration Command Messages

This section explains messages output by the migration command.

BUPG3001

The migration failed. (Detail: Java Runtime Environment (JRE) version 1.6 is not supported by this driver. Use the sqljdbc4.jar class library, which provides support for JDBC 4.0.)

Message type

Error

Parameters

None

Description

As the JDBC driver that is not supported by V12.2 is being used, migration processing cannot be continued.

Action

Replace sqljdbc.jar deployed to *<Workspace Directory in V11.1 Backup Resources>\davroot\libFiles* with sqljdbc4.jar, and execute the command again.

BUPG3001

The migration failed. (Detail:BUPG3001: The migration failed. (Detail:BFWK2105: Failed to start component group [UPGRADE]))

Message type

Error

Parameters

None

Description1

Directories that were automatically backed up when the command was previously executed may still exist.

Action1

Revert the automatically backed up directory to the original directory name using the procedure described in "Notes" in Chapter 3, "Using the Migration Command", and then execute the command again.

Description2

The earlier version of DB may not be able to be accessed.

Action2

Check if the earlier version of DB has never been changed, and check if you access from the environment of this version to the DB.

BUPG3013

The number of sensors is different (Input:{0}, Target:{1}). Sync the number of sensors.

Message type

Error

Parameters

{0}= Number of sensors from the earlier version

{1}= Number of sensors for the latest version

Description

The number of sensors differs for the earlier and latest versions.

Action

If using the earlier version of remote sensors and Windows Service Edition Text File Sensors, check the number of sensors for the earlier and latest versions to ensure they match.

BUG3014

The number of Service Sensors is different (Input:{0}, Target:{1}). Sync the number and type of sensors.

Message type

Error

Parameters

{0}= Number of Windows Service Edition Text File Sensors from the earlier version

{1}= Number of Windows Service Edition Text File Sensors for the latest version

Description

The number of Windows Service Edition Text File Sensors differs for the earlier and latest versions.

Action

If using the earlier version of remote sensors and Windows Service Edition Text File Sensors, check the number and type of sensors for the earlier and latest versions to ensure they match.

BUG3015

The target sensor does not exist (Input:{0}). Confirm that the sensor which have same name exists.

Message type

Error

Parameters

{0}= Sensor names from the earlier version

Description

There are no sensors in this version with the same names as sensors in the earlier version.

Action

Check if there are any sensors in this version with the same names as sensors in the earlier version.

BUG3016

Failed to backup the directory. (Path:{0})

Message type

Error

Parameters

{0}= Directory that could not be backed up

Description

The specified directory could not be backed up.

Action

Check whether there is already a directory, *<Same Name Directory>.org*, in the path.

The migration command backs up resources to a directory with *.org* added to the original directory name.

If this message is output, the directory, *<Same Name Directory>.org*, may have been created. If you decide to re-execute the command, revert *<Same Name Directory>.org* to its original directory name and then run the command.

BUPG3020

Authentication failed. The password is incorrect.

Message type

Error

Parameters

None

Description

The specified Super user password is invalid.

Action

Specify the Super user password that can be used with the latest version.

BUPG3021

Specified path is locked. Please release the file or directory and try again. (Path){0}

Message type

Error

Parameters

{0}= Target path

Description

As the file or directory in the path displayed in the detailed information is currently being used, processing cannot be continued.

Action

Close any open directories, for example, open in the Explorer, listed in the detailed information. In addition, close any files listed in the displayed path that are open, for example, open in text editors. After this is done, execute the command again.