

FUJITSU Software Interstage Studio V11.1

A horizontal band with a red abstract graphic featuring glowing, overlapping lines and curves.

Installation Guide

B1WD-3159-02ENZ0(00)
November 2013

Preface

Purpose

This manual, the Interstage Studio Installation Guide, explains how to setup Interstage Studio. The manual is therefore intended for the users who install or uninstall this product.

For an overview of Interstage Studio and details on its operation environment, refer to the following manuals:

- Interstage Studio Standard-J Edition Software Release Guide
This manual explains the Interstage Studio operation environment (basic software and memory space requirements), the size of hard disk space required for installation, related software, and other such information.

Audience

This manual is intended for those performing install and uninstall tasks for the Interstage Studio and describes the required install and uninstall procedures.

Organization of This Manual

The manual consists of the following:

[Chapter 1 Overview of Installation](#)

This chapter provides an overview of Interstage Studio installation.

[Chapter 2 Installation Tasks](#)

This chapter explains in detail how to install Interstage Studio.

[Chapter 3 Uninstallation Tasks](#)

This chapter explains how to uninstall Interstage Studio.

[Appendix A Add-on Components](#)

This appendix explains how to install and uninstall add-on components.

Interstage Studio provides add-on components as functions (software) that can be added to this product and used. Read this appendix before using the add-on components.

[Appendix B Deleting an Installed Environment](#)

This appendix explains the "emergency measures" required only if an unexpected event occurs during installation or uninstallation which subsequently prevents normal reinstallation or uninstallation.

Acronym List

| Acronyms | Explanation |
|--------------------------|--|
| JDK | Java(TM) Development Kit Java(TM) 2 SDK, Standard Edition |
| J2EE | Java(TM) 2 Platform, Enterprise Edition |
| Java EE | Java(TM) Platform, Enterprise Edition |
| JSP | JavaServer Pages |
| Windows XP Home Edition | Microsoft(R) Windows(R) XP Home Edition |
| Windows XP Professional | Microsoft(R) Windows(R) XP Professional |
| Windows XP | Microsoft(R) Windows(R) XP Home Edition Microsoft(R) Windows(R) XP Professional |
| Windows Vista Home Basic | Windows Vista(R) Home Basic |

| Acronyms | Explanation |
|----------------------------|--|
| Windows Vista Home Premium | Windows Vista(R) Home Premium |
| Windows Vista | Windows Vista(R) Home Basic Windows Vista(R) Home Premium Windows Vista(R) Business Windows Vista(R) Enterprise Windows Vista(R) Ultimate |
| Windows 7 Home Premium | Windows(R) 7 Home Premium |
| Windows 7 | Windows(R) 7 Home Premium Windows(R) 7 Professional Windows(R) 7 Enterprise Windows(R) 7 Ultimate |
| Windows 8 | Windows(R) 8 Windows(R) 8 Pro Windows(R) 8 Enterprise |
| Windows Server 2003 | Microsoft(R) Windows Server(R) 2003, Standard Edition Microsoft(R) Windows Server(R) 2003, Enterprise Edition Microsoft(R) Windows Server(R) 2003, Standard x64 Edition Microsoft(R) Windows Server(R) 2003, Enterprise x64 Edition Microsoft(R) Windows Server(R) 2003 R2, Standard Edition Microsoft(R) Windows Server(R) 2003 R2, Enterprise Edition Microsoft(R) Windows Server(R) 2003 R2, Standard x64 Edition Microsoft(R) Windows Server(R) 2003 R2, Enterprise x64 Edition |
| Windows Server 2008 | Microsoft(R) Windows Server(R) 2008 Foundation Microsoft(R) Windows Server(R) 2008 Standard Microsoft(R) Windows Server(R) 2008 Enterprise Microsoft(R) Windows Server(R) 2008 Standard without Hyper-V(TM) Microsoft(R) Windows Server(R) 2008 Enterprise without Hyper-V(TM) Microsoft(R) Windows Server(R) 2008 R2 Foundation Microsoft(R) Windows Server(R) 2008 R2 Standard Microsoft(R) Windows Server(R) 2008 R2 Enterprise |
| Windows Server 2012 | Microsoft(R) Windows Server(R) 2012 Foundation Microsoft(R) Windows Server(R) 2012 Standard Microsoft(R) Windows Server(R) 2012 Datacenter |
| Internet Explorer | Windows(R) Internet Explorer(R) |

- All the following products are referred to as "Windows".
 - Windows XP
 - Windows Vista
 - Windows 7
 - Windows 8
 - Windows Server 2003
 - Windows Server 2008
 - Windows Server 2012
- The Server function of the Remote Desktop function means Terminal Server in Windows Server 2003, Terminal Services in Windows Server 2008, and Remote Desktop Services in Windows Server 2012. All these circumstances are simply referred to as Terminal Services.
- In Windows 8 and Windows Server 2012, replace "[All Programs] on the Start menu" with "[All apps] on the Start page". Right click the background on the start page or swipe from bottom to up to see [All apps] on the menu.

Symbol

The following symbol is used in this manual:

| Symbol | Meaning |
|--------|---|
| [] | Indicates characters displayed in windows and dialog boxes, and keyboard keys. Examples: [Installation Type Selection] window; Click [OK]; [Alt] key |

Trademarks

- Microsoft, Active Directory, ActiveX, Excel, Internet Explorer, MS-DOS, MSDN, Visual Basic, Visual C++, Visual Studio, Windows, Windows NT, Windows Server, Win32 are either registered trademarks or trademarks of Microsoft Corporation in the United States and/or other countries.
- Oracle and Java are registered trademarks of Oracle and/or its affiliates. Other names may be trademarks of their respective owners.
- Other company and product names in this documentation are trademarks or registered trademarks of their respective owners.

Issue Date and Version

| Version | Manual Code |
|-------------------------------|---|
| November 2012: First Edition | B1WD-3159-01ENZ0(00) / B1WD-3159-01ENZ2(00) |
| November 2013: Second Edition | B1WD-3159-02ENZ0(00) / B1WD-3159-02ENZ2(00) |

Copyright

Copyright 2012-2013 FUJITSU LIMITED

Contents

| | |
|--|----|
| Chapter 1 Overview of Installation..... | 1 |
| 1.1 Function Overview..... | 1 |
| 1.1.1 Java Integrated Development Environment..... | 1 |
| 1.1.2 Operation Test Environment..... | 1 |
| 1.2 Installation Types..... | 2 |
| 1.3 Related Products..... | 3 |
| Chapter 2 Installation Tasks | 4 |
| 2.1 Preparation for Installation..... | 4 |
| 2.2 Notes on installation..... | 6 |
| 2.2.1 Installation in a Folder with the Encryption Attributes..... | 6 |
| 2.2.2 When Windows Defender is Enabled..... | 6 |
| 2.2.3 Installation of an Application Server in the Operation Test Environment..... | 7 |
| 2.2.4 The JAVA_HOME and PATH System Environment Variables..... | 9 |
| 2.2.5 Notes for when Interstage Application Server is Installed..... | 9 |
| 2.2.6 JBK Plugin..... | 10 |
| 2.2.7 Uninstall (middleware)..... | 10 |
| 2.3 Installation..... | 11 |
| 2.3.1 Typical Installation..... | 11 |
| 2.3.2 Custom Installation..... | 16 |
| 2.3.3 Overwrite Installation..... | 29 |
| 2.4 Post-installation Work..... | 34 |
| 2.5 Troubleshooting during Installation..... | 35 |
| Chapter 3 Uninstallation Tasks | 37 |
| 3.1 Preparation for Uninstallation..... | 37 |
| 3.2 Notes on Uninstallation..... | 38 |
| 3.3 Uninstallation..... | 38 |
| 3.4 Post-uninstallation Work..... | 40 |
| Appendix A Add-on Components..... | 44 |
| A.1 Fujitsu XML Processor..... | 44 |
| Appendix B Deleting an Installed Environment..... | 45 |
| Index..... | 52 |

Chapter 1 Overview of Installation

This chapter provides an overview of Interstage Studio installation. For details on the operating system used to run Interstage Studio and the disk space requirements for installation, refer to the "Interstage Studio Standard-J Edition Software Release Guide".

1.1 Function Overview

By installing Interstage Studio, an environment is installed that can facilitate the series of operations from application development to application debugging in a separate standalone environment for any of these tasks:

- Java integrated development environment
Integrated development environment for developing each application.
It is possible to develop Java EE/J2EE server side applications (JSP/Servlet/EJB/Web services) and client applications such as applets.
- Operation test environment
This environment is used to test developed applications.
Operation tests on developed server and client applications can be performed in a standalone environment.

Information

Interstage Studio provides components (i.e., functionality) that can be added to the product for use as "Add-on components". However, add-on components are not automatically installed during the installation of Interstage Studio. Each add-on component must be installed before it is used.

For details on how to install add-on components, refer to "Appendix A Add-on Components".

Point

The following components are shared by Fujitsu middleware products. They are installed along with this product if they are not already installed:

- **FJSVc (CIRuntime Application)**
Controls the installation and uninstallation of Fujitsu middleware products. Manages the installation information of Fujitsu middleware products and includes a management function for viewing installation information and launching the uninstaller of each product. ("Uninstall (middleware)")
- **FJQSS (Information Collection Tool)**
This tool is used to simplify the collection of resources required for troubleshooting. The cause of a problem can be discovered quickly by using the FJQSS (Information Collection Tool) immediately after a problem.

1.1.1 Java Integrated Development Environment

The Java integrated development environment contains workbench for developing Java application.

This environment also contains other components required for development of various applications. The required components are represented by J Business Kit, which provides useful libraries and tools for efficient development and operation of Java applications.

Information

The Java EE 6 workbench is provided for the development of Java EE 6 application and Java application that uses JDK 7. If using the Java EE 6 workbench, select "Java EE 6 Development Function" during installation.

For details on the Java EE 6 workbench, refer to "Interstage Studio User's Guide".

1.1.2 Operation Test Environment

The operation test environment includes the necessary components for testing applications that were developed with the Java integrated development environment. These components of the operation test environment are as follows:

- Application server
- Framework

Additional software may be required depending on the function used. For details, refer to the following online manual about the application server:

- Interstage Application Server Product Notes : Chapter 1 Supported Software
Software Products Required for Application Development
Client-side Software Products Required to Use Client Applications



Note

The application server cannot be installed if the following operating systems are used.

- Windows XP Home Edition
- Windows Vista Home Basic
- Windows Vista Home Premium
- Windows 7 Home Premium
- Windows 8 (except Pro/Enterprise)

The system scale is set to "small" (the number of connected clients ranges from 1 to 5) during installation of the application server. Referring to the "Interstage Application Server Operator's Guide", change the system scale as necessary.

1.2 Installation Types

This section explains the Interstage Studio installation types.

Interstage Studio supports the following two installation types for the respective Interstage Studio operation modes:

- [Typical installation](#)

Interstage Studio is installed with a standard configuration of functions. This product can be installed easily with only one click. To select and install only necessary functions, perform a custom installation.

- [Custom installation](#)

From the functions provided by Interstage Studio, necessary functions can be selected so that only they are installed. This product can be installed with the function components that suit the operating mode of the Interstage Studio. For example, if the operation test environment is not required, perform this type of installation.

The table below lists the components (functions) that can be installed with each type of installation.

[Component lists]

| Environment | Component | Installation type | |
|---|---------------------------------------|----------------------|---------------------|
| | | Typical installation | Custom installation |
| Java integrated development environment | Workbench, J Business Kit, etc. | (*1) | (*1) |
| Java EE 6 development function | Java EE 6 workbench | (*4) | (*2) |
| Operation test environment | Application Server | (*1) | (*2) |
| | Framework | (*1) | (*2) |
| Java Development Kit | JDK 6 | (*1) | (*1) |
| | JDK 7 | (*4) | (*2) |
| Add-on components | | (*3) | (*3) |

Explanatory note:

- *1: Installed unconditionally
- *2: Can be selectively installed
- *3: Not installed automatically. Install it as necessary
- *4: Not installed

Environment where Interstage Studio of the same version is already installed

You can change the current installation configuration without uninstalling the existing Interstage Studio:

- Uninstalling installed components
Some components such as Java Development Kit cannot be uninstalled.
- Selectively installing additional components

The Interstage Studio refers to this installation type as "[Overwrite installation](#)".

1.3 Related Products

Exclusive software

Interstage Studio cannot be installed in an environment where any of the products listed below is installed. If one of them is installed, uninstall it before installing Interstage Studio.

- A different version of this software
- Interstage Studio Client Runtime
- Interstage Application Server (Server Package) (V9.1 or earlier)
- Interstage Application Server Plus (Server Package)
- Interstage Application Server Plus Developer
- Interstage Business Application Manager for .NET (V1.0, V1.1)

Application server function exclusive software

The application server function cannot be installed in an environment where any of the products listed below is installed. If one of them is installed, uninstall it before installing this product.

- Interstage Application Server (Server Package) (V9.2 or later) (*1)
- Interstage Application Server (Client Package)
- Interstage Application Server Plus (Client Package)
- Systemwalker CentricMGR (Operation Management Client)
- Systemwalker CentricMGR (Operation Management Server)
- Systemwalker Centric Manager (Operation Management Client)
- Systemwalker Centric Manager (Operation Management Server)
- Systemwalker Centric Manager (V13.4.0 or later) (*2)
- Interstage Security Director (IIOP application gateway function)

*1: If installing this product on the same computer, then the application server function of this product cannot be installed. Other notes apply. Refer to "[2.2.5 Notes for when Interstage Application Server is Installed](#)".

*2: This is incompatible software if a single sign-on server is being used.

Relationship with products that provide workbench plugins

When used with products that provide plugins that extend the functionality of the workbench of this product, normally this product must be installed first. Before performing this task, refer to the manuals for the product that provides the plugin and check the installation and uninstallation procedures and points of note.

Chapter 2 Installation Tasks

This chapter explains how to install Interstage Studio. Also, install Interstage Studio with the privilege of the computer administrator or a member of the Administrators group.

Point

Installation destination file system

The function shown below must be installed in NTFS. When installing this function, specify an NTFS folder as the installation destination of this product.

- Interstage Application Server

2.1 Preparation for Installation

Check the following items, and take appropriate action as necessary:

- [Checking installation availability](#)
- [Stopping applications](#)
- [Checking the environment](#)
- [Installing necessary software](#)
- [Uninstalling software](#)
- [Other](#)

Checking installation availability

- To check if installation is possible for a particular operating system, refer to "Interstage Studio Standard-J Edition Software Release Guide", chapter "Basic Software".
- Restrictions apply to the characters that can be set in the computer host name when installing an application server. Refer to "[Characters recommended for the host name](#)" and check that the characters used in the host name will not cause problems. If there is a problem, change the host name.

Stopping applications

- Stopping applications

Stop every application running under Windows(R).

If a resource such as a disk or registry used by Interstage Studio is being used by an application (such as an event viewer, explorer, or registry editor) during installation, installation may fail.

Stop the installers for other products and "Uninstall (middleware)" if it is running.

- Screensaver

If a screensaver is enabled, the installer may not operate stably. Disable the screensaver before starting installation.

Checking the environment

- Disk space

For disk space required when installing this product, refer to "Interstage Studio Standard-J Edition Software Release Guide".

- PATH, CLASSPATH and JAVA_HOME

For Interstage Studio installation, specify the folders specific to the components that compose the Java integrated development environment and operation test environment, in the PATH environment variable. Also, specify the Java class library path and JAR files in the CLASSPATH environment variable.

If the path specified in a system environment variable for the PATH and CLASSPATH variable exceeds the effective length, the specified path is not set. Check whether an unnecessary path is specified in PATH or CLASSPATH. If an unnecessary path is specified, delete it.

If installed under C:\Interstage, set as shown below.

| Component | Environment variable PATH |
|---|--|
| Java integrated development environment | C:\Interstage\IDE\JDK6\bin |
| Application server | C:\Interstage\APS\bin C:\Interstage\APS\ODWIN\bin C:\Interstage\APS\F3FMisjee\bin C:\Interstage\APS\F3FMisjee\imq\bin |

| Component | Environment variable CLASSPATH |
|---|--|
| Java integrated development environment | C:\Interstage\IDE\1101\JBK\gui6\jbkgui.jar . (*1) |
| Application server | C:\Interstage\APS\ODWIN\etc\class\ODjava4.jar C:\Interstage\APS\eswin\lib\esnotifyjava4.jar C:\Interstage\APS\lib\isadmin_scs.jar C:\Interstage\APS\jms\lib\fjmsprovider.jar C:\Interstage\APS\J2EE\lib\isj2ee.jar C:\Interstage\APS\J2EE\lib\providerutil.jar C:\Interstage\APS\J2EE\lib\fscontext.jar C:\Interstage\APS\lib |

*1: The "." symbol indicates the current folder.

| Component | Environment variable JAVA_HOME |
|---|--------------------------------|
| Java integrated development environment | C:\Interstage\IDE\JDK6 |

If [Do not register] is selected in the custom installation [Registration of Java environment information in the system] window, environment variables are not set. Refer to "[Select whether or not the Java environment information of this product is to be registered in the system](#)" for details.

Installing necessary software

If any of the following software products is not installed, install it:

- Internet Explorer 7, 8, 9 or 10
- Internet protocol (TCP/IP)



Note

IPv6 Environment

This product only supports IPv6/IPv4 dual stack. If using this product in an IPv6 environment, install and enable IPv4 Internet Protocol (TCP/IP).

If installing this product in an environment in which IPv4 Internet Protocol (TCP/IP) is not installed, even if a valid port number is set at setup time of various port numbers, a message to the effect of "in use" will be displayed. Install this product only after installing IPv4 Internet Protocol (TCP/IP).

Check that the following component is installed if using Windows XP or Windows Server 2003. If the component is not installed, install the component.

- Windows Installer 3.0 or later

Uninstalling software

If exclusive software shown under "[1.3 Related Products](#)" has been installed, uninstall this software.

Other

Check the following items, and take appropriate action as necessary:

- The access authority of the files and folders

When Interstage Studio is installed onto an NTFS formatted drive, the files and folders located in the installation folder will inherit the permissions settings of the folder into which Interstage Studio is installed.

Assign either of the following permissions to the installation folder:

- Administrator user (full control) and SYSTEM group (full control)
- Administrators group (full control)

Referring to "[Enhancing security for installed resources](#)", enhance security as necessary after installation.

- The access authority of the registry

Check that the following authorities are granted if HKEY_LOCAL_MACHINE\SOFTWARE\Fujitsu (*1) already exists.

- Administrators group (full control)
- SYSTEM group (full control)

Check that the above authorities are not granted to HKEY_LOCAL_MACHINE\SOFTWARE if HKEY_LOCAL_MACHINE\SOFTWARE\Fujitsu does not exist.

*1: Under the 64-bit OS, this is HKEY_LOCAL_MACHINE\SOFTWARE\Wow6432Node\Fujitsu.

- Switching to install mode for the Terminal Services

If the Terminal Services is in execute mode, the mode must be switched to install mode.

Before starting installation, execute the following command to switch to install mode for the Terminal Services:

```
CHANGE USER /INSTALL
```

After Interstage Studio is successfully installed, refer to "[Switching to execute mode for the Terminal Services](#)" and switch to execute mode.

2.2 Notes on installation

This section provides notes on installation.

2.2.1 Installation in a Folder with the Encryption Attributes

If this product is installed in a folder with the encryption attributes, an error may occur during service activation or application execution. Install this product in a folder without the encryption attributes, or cancel the encrypt attributes for the folder.

2.2.2 When Windows Defender is Enabled

If this product is installed when Windows Defender is enabled, the following messages may be output in the Windows Defender history and event viewer system log from Windows Defender.

These are used by the Windows Defender Real-Time Protection agent to monitor the registration of services software, so the server functionality can be used as they are without any problems.

The Windows Defender icon may also be displayed in the notice area of the taskbar during the installation. In this case, open Windows Defender, and click [Apply Actions] in the "Review changes to your computer settings" window.

Windows Defender history message

This program has potentially unwanted behavior.

Event viewer system log

Windows Defender Real-Time Protection agent has detected changes. Microsoft recommends you analyze the software that made these changes for potential risks. You can use information about how these programs operate to choose whether to allow them to run or remove them from your computer. Allow changes only if you trust the program or the software publisher. Windows Defender can't undo changes that you allow.

2.2.3 Installation of an Application Server in the Operation Test Environment

This section provides notes on installing an application server as a component of the operation test environment.

Microsoft Visual C++ 2005 Redistributable Package

Microsoft Visual C++ 2005 Redistributable Package is required for using the application server. If the package has not been installed on your computer, the installer of this product automatically installs the package.

Do not uninstall Microsoft Visual C++ 2005 Redistributable Package while this product is used.

Installation destination file system

The application server must be installed in NTFS. When installing the application server, specify an NTFS folder as the installation destination of this product.

When Windows(R) 8.3 format (short name) path generation is disabled

The application server must be installed in an environment in which 8.3 format file name path generation is enabled. If the application server is installed in an environment in which 8.3 format file name path generation is disabled, it may not be possible to start the service.

Use the following procedure to check that the 8.3 format file name path generation is enabled. If it is disabled, enable it before installing the application server.

Use the registry to check this setting

1. Check the following registry value:

Registry name

```
HKKEY_LOCAL_MACHINE\SYSTEM\CurrentControlSet\Control\FileSystem\NtfsDisable8dot3NameCreation
```

Value

0: Enabled
1: Disabled

2. If the registry setting is "1 (disabled)", change it to "0 (enabled)", then restart the computer.
3. Install the Application Server of this product.

Use the standard system commands to check this setting

1. Execute the following command and check the value displayed in disable8dot3:

Command execution example

```
C:\> fsutil behavior query disable8dot3  
disable8dot3 = 0
```

Value in disable8dot3

- 0: Enabled
- 1: Disabled

2. If the disable8dot3 setting is "1 (disabled)", change it to "0 (enabled)" then restart the machine.

```
C:\> fsutil behavior set disable8dot3 0
```

3. Install the Application Server of this product.

Characters recommended for the host name

Use the following characters for the host name:

- Uppercase (A to Z)
- Lowercase (a to z)
- Numbers (0 to 9) (*1)
- Hyphens ('-') (*2)
- Periods ('.') (*2)

*1: Numbers cannot be used after the last periods of the host name.

*2: Hyphens and periods cannot be used as the first character of the host name. Additionally, periods cannot be specified at the end of the host name.

Characters used in the host name must not violate RFC2396.

If an underscore "_" or other characters that are not recommended are used in the host name, after installation is completed, the message **'IS: ERROR: is40003: Could not connect to Interstage JMX service'** will be displayed when you log in to the Interstage Management Console, and Interstage will not be able to operate.

Interstage data store

The Interstage data store service is also installed when the application server is installed. Note the following points:

- If the user account (oms) for accessing repositories has not been registered in the system, a new oms user account is created.
- The initial value of the port number used by Interstage data store services is [9700].
To change the initial value of the port number used by Interstage data store services, change it to a number that is not being used by another application or Interstage data store data store using the following command:

```
..  
%IS_HOME%\Enabler\server\bin\omschangeport.exe -u "New port number"  
..
```

To change the Interstage data store services port number, the following conditions must be met:

- A Interstage data store service must be running
- The Interstage Directory Service repository must not be running

The port number used by the Interstage data store service is defined in the file below. The value defined in "OMS_SERVICE=" is the port number used by the Interstage data store service.

```
..  
%IS_HOME%\Enabler\server\param\enabler.conf  
..
```

- The initial value of the port number used by the repository is a number from 6000 to 65535 that is not being used when the repository is generated. If you want to change the port number used by the repository from the initial value, use the method below to change it to a port number that is not being used by other applications or by other data stores of Interstage data store.

```
..  
%IS_HOME%\Enabler\server\bin\omschangeport.exe "Repository name" -pn "New port number"  
..
```

The port numbers being used by the data stores of Interstage data store can be checked using the method below.

```
..  
%IS_HOME%\Enabler\server\bin\omslis.exe -l  
[Example]
```

```
-----  
rep001: server=host01 port=6000 XF  
rep002: server=host01 port=6001 XF  
-----
```

The "port" value is the port number being used by the data store of Interstage data store.

..

2.2.4 The JAVA_HOME and PATH System Environment Variables

Even if installing JDK 7, set a JDK 6 storage path in the JAVA_HOME and PATH system environment variables when installing this product.

2.2.5 Notes for when Interstage Application Server is Installed

This section describes notes that apply when operating the following products containing application servers and Interstage Studio on the same computer.

Products with inbuilt application server functions that can be used in combination

| Item | Product Name | Version / Level |
|------|---|-----------------|
| 1 | Interstage Application Server Standard-J Edition (Server Package) | V9.2 or later |
| 2 | Interstage Application Server Enterprise Edition (Server Package) | V9.2 or later |

If the documentation of the above products contains notes on usage in combination with Interstage Studio, follow those notes.

Installation procedure

Always perform installation in the following order.

1. Install Interstage Application Server

Install the products shown in the table before you install this product. For the installation procedure, refer to the software release guide of each product.

2. Stop the Interstage Application Server Service

Before installing this product, stop the Interstage Application Server service. For details on how to stop the service, refer to the Interstage Application Server manual.

3. Install Interstage Studio

Install this product according to the procedure in "[2.3.2 Custom Installation](#)". The [Installation Type Selection] window where the installation type is selected is not displayed.

In the [Select Components to Install] window, the application server cannot be selected. Additionally, if installing the Framework function with other products, Framework cannot be selected.

After the [Select Components to Install] window, the [Registration of Java environment information in the system] window is displayed. In this window, select [Do not register].



If [Register] is selected, the following process occurs. The following points must be noted if JDK or JRE have been installed by another product:

- The Java environment information to be installed by this product is registered on the system.

- The system environment variables PATH, CLASSPATH and JAVA_HOME are set. For details on the path to be added to the PATH and CLASSPATH environment variables, refer to "[Checking the environment](#)", and make sure that the values do not exceed the valid length.

Notes

- Do not perform operations related to installation of Interstage Application Server products while this product is being installed. If the installer or uninstaller is started, exit immediately, without progressing operations.
If option modifications such as adding or deleting Interstage Application Server product functions are required, first uninstall this product, then perform the modifications.
- If uninstalling Interstage Application Server products, always uninstall this product before performing uninstall. If continuing to use this product, install this product again after uninstall.

2.2.6 JBK Plugin

If this product was installed in an environment in which the products or features shown below have been installed, the JBK plugin of this product will be enabled and the JBK plugin that is already installed will be disabled.

- Interstage Application Server (Client Package)
- JBK plugin installed using the Interstage Studio Standard-J Edition download installer

The above JBK plugin runs when this product is uninstalled.

2.2.7 Uninstall (middleware)

"Uninstall (middleware)" is a tool used by Fujitsu middleware products. It performs information management for middleware products, and also, launching the uninstaller for removing these products from the installed systems.

Note

- To uninstall Interstage Studio, uninstall from "Uninstall (middleware)".
- This tool manages information about other Fujitsu middleware products even if Interstage Studio. For this reason, do not uninstall it unless absolutely necessary.
If you have accidentally uninstalled this tool, re-install it as described below.

1. Log into the system using an account that has Administrator or root privileges.
2. Insert the media to the DVD-ROM drive.
3. Start the installer.

```
<product media>\INST\cir\cirinst.exe
```

- If you uninstall this tool as described below.
 1. Check that there are no Fujitsu middleware products installed in the system.
You can check this by using "Uninstall (middleware)", which is launched by the command below.
Select [All Programs] > [Fujitsu] > [Uninstall (middleware)]
 2. If no Fujitsu middleware products have been installed, then issue the command below.

32-bit OS:

```
%ProgramFiles%\Fujitsu\FujitsuF4CR\bin\cirremove.exe
```

64-bit OS:

```
%ProgramFiles(x86)%\Fujitsu\FujitsuF4CR\bin\cirremove.exe
```

- At the uninstallation confirmation prompt, enter "y".

This software is a common tool of Fujitsu products. Are you sure you want to remove it?[y/n]:

Uninstallation will start.

- After uninstallation, the directories and files listed below remain in the system. Delete them.

%SystemDrive%\FujitsuF4CR

%ProgramData%\Fujitsu\FujitsuF4CR (systems except Windows XP/Windows Server 2003)

%ALLUSERSPROFILE%\Application Data\Fujitsu\FujitsuF4CR (Windows XP/Windows Server 2003)

2.3 Installation

You can select one of the following setup methods for Interstage Studio installation.

| Installation type | Outline |
|--|---|
| Typical installation | Interstage Studio is installed with a standard configuration of functions. This one-touch installation can facilitate Interstage Studio installation. |
| Custom installation | Necessary Interstage Studio functions (components) can be selected for installation. Interstage Studio can be installed with a functional configuration appropriate for a specific Interstage Studio operation mode. |
| Overwrite installation | This installation type is useful in an environment where Interstage Studio of the same version is already installed. It is used to: - Uninstall installed components - Install additional components The installation destination folder cannot be changed. |

This section explains the Interstage Studio installation procedure for each installation type.

In an environment where related products are already installed

If related products are already installed and this product cannot be installed with the standard function configuration, "custom installation" is selected automatically. Refer to "[2.3.2 Custom Installation](#)" for details of the custom installation procedure.

Installation of add-on components

For details on installation of add-on components, refer to "[Appendix A Add-on Components](#)".

2.3.1 Typical Installation

This section explains how to install Interstage Studio when the selected installation type is "Typical installation".

- [Stop all applications](#)
- [Insert product DVD-ROM into the drive](#)
- [Select \[Typical\]](#)
- [Verify the installation configuration](#)
- [Installation begins](#)
- [Installation is completed](#)

1. Stop all applications

Confirm that all applications are stopped.

2. Insert product DVD-ROM into the drive

Insert product DVD-ROM into the DVD-ROM drive of your computer.

The installer is automatically activated, and it opens the following window.



Click the [Installation] button to start installation.

The "User Account Control" dialog box may be displayed, depending on the operating system that is being used. When the dialog box is displayed, click [Continue] and continue with the installation.

Point

If autorun on the DVD drive is not enabled, execute the following command:

<DVD drive name>:\autorun.exe

Information

Explanation of buttons

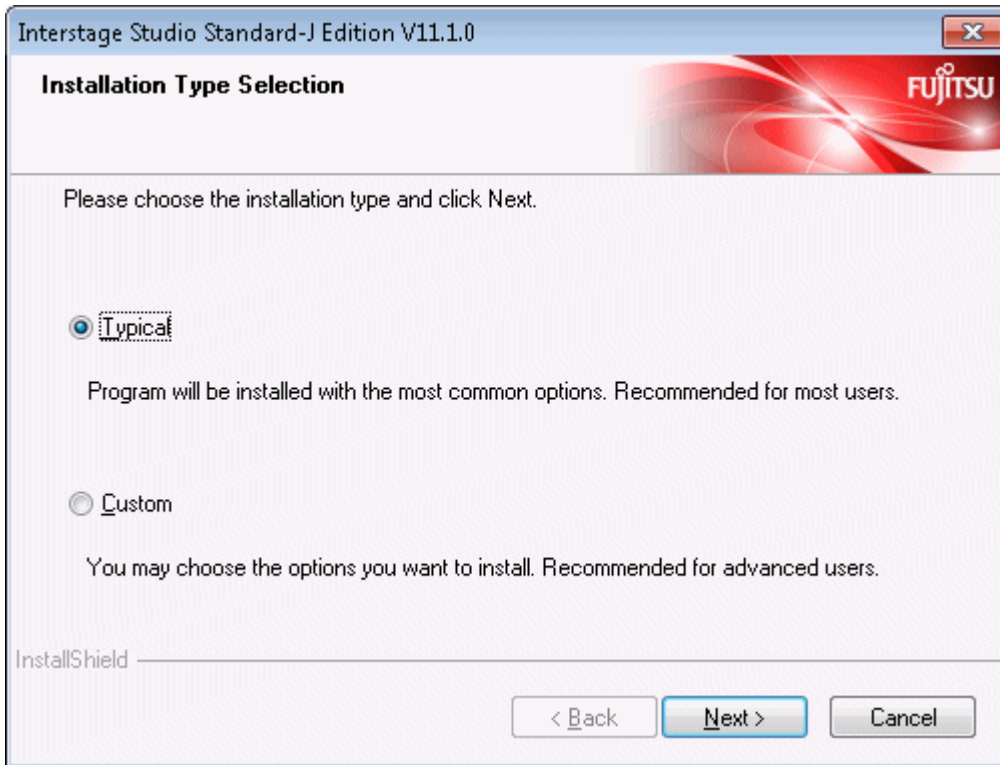
| Button | Outline |
|--------------------|--|
| Readme | Displays the Interstage Studio software release guide. |
| Installation Guide | Displays this manual. |
| Installation | Starts Interstage Studio installation. |
| Online Manual | Displays the online manual. |

| Button | Outline |
|--------|--------------------------------------|
| Exit | Ends Interstage Studio installation. |



3. Select [Typical]

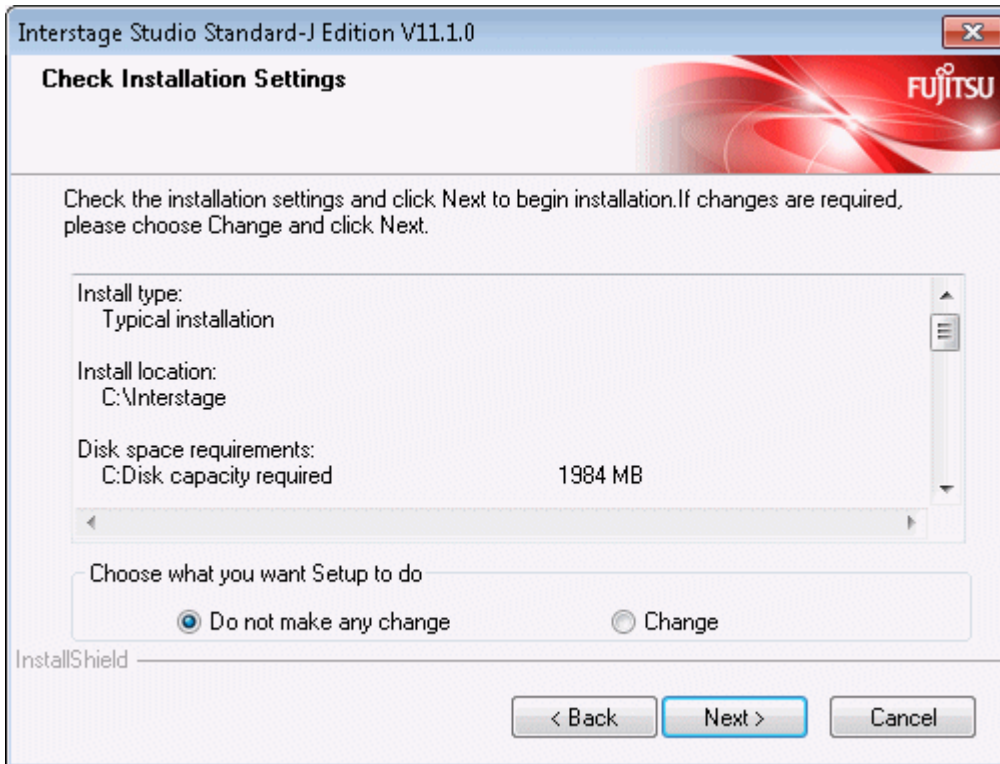
In the [Installation Type Selection] window, select [Typical] as the installation type. For details on components that are installed, refer to "Component lists".



Click the [Next] button. To cancel installation, click the [Cancel] button.

4. Verify the installation configuration

In the [Check Installation Settings] window, verify the installation configuration.

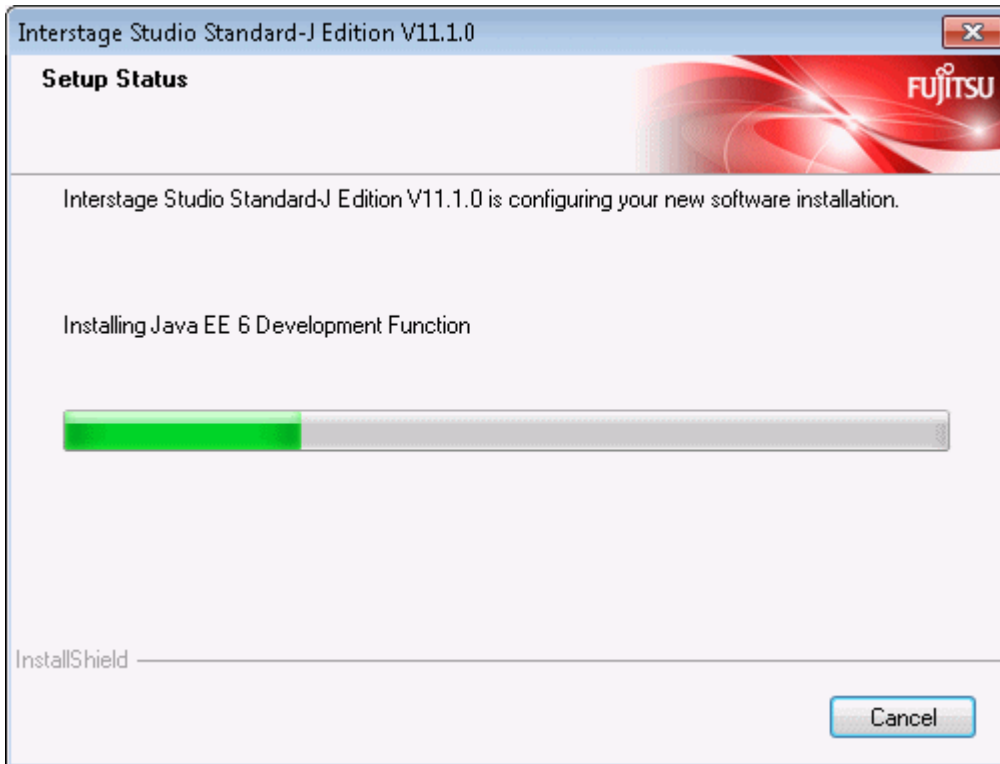


If necessary, you can change the Interstage Studio installation destination folder or port number setting.

- To not change the installation destination folder and port number setting
Select [Do not make any change], and click the [Next] button. Installation begins, using the displayed setting values.
- To change the installation destination folder or port number setting
Select [Change], and click the [Next] button. The [Choose Destination Location] window is displayed. Refer to "[2.3.2 Custom Installation](#)" for details of the subsequent screen operations.

5. Installation begins

The setup program begins to install the components required for application development and the operation test environment. The [Setup Status] window displays the progress of installation.



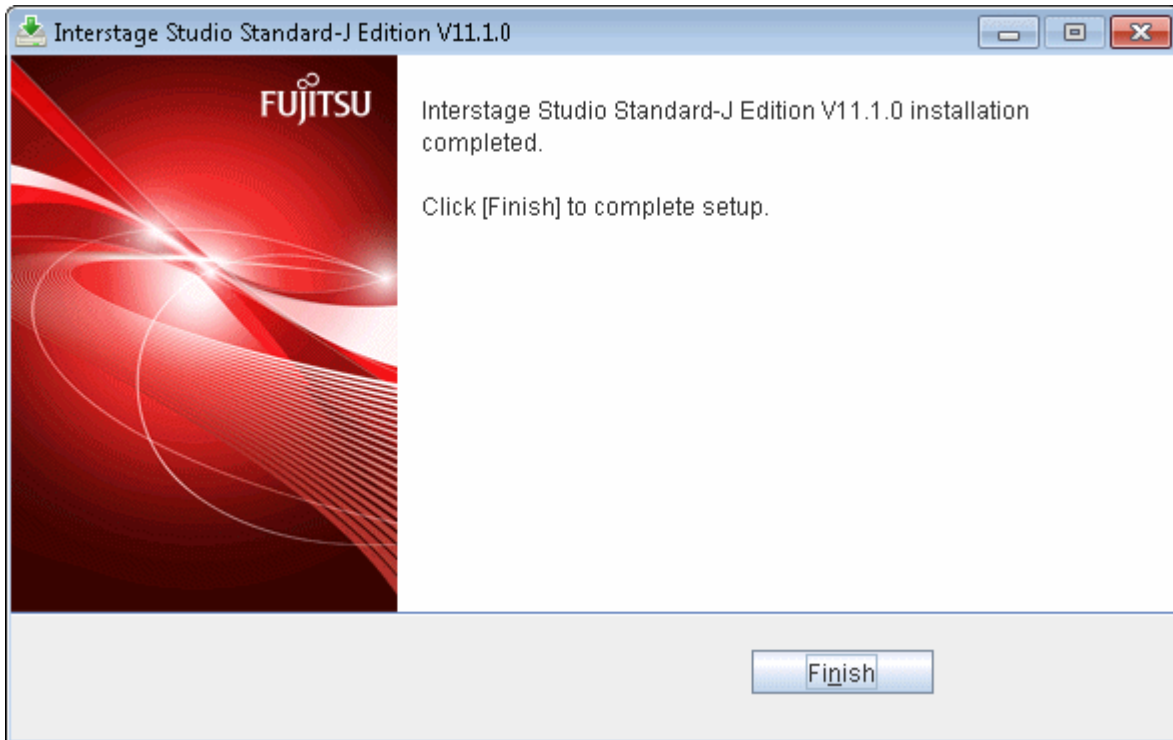
Note

Cancellation

While the [Setup Status] window is displayed, do not click [Cancel] or press the Alt and C keys at the same time. Otherwise, such cancellation causes the installation process to hang. In this event, refer to "[Action to be taken in the event that the installation process hangs](#)" and take the necessary action.

6. Installation is completed

When Interstage Studio installation is completed, the following window is displayed.



Click the [Finish] button. This ends Interstage Studio installation.

After clicking the [Finish] button, confirm that the installer icon disappears from the taskbar before beginning to use your computer.

Note

A dialog box shows you to restart the computer

If a file copy error occurs during installation, a dialog box will open to show about restarting the computer. In such cases, click the [Finish] button, and restart the computer.

If a file copy error occurs during installation, installation processing is completed when the computer is restarted.

Besides, when fast startup is enabled due to the use of Windows 8, please make sure the system is restarted by selecting [Restart] from the [Power] menu of [Settings] charm.

2.3.2 Custom Installation

This section explains how to install Interstage Studio when the selected installation type is "Custom installation".

1. [Stop all applications](#)
2. [Insert product DVD-ROM into the drive](#)
3. [Select \[Custom\]](#)
4. [Select the installation folder](#)
5. [Select the functions to be installed](#)
6. [Set the port numbers](#)
7. [Set the port numbers to be used by the Java EE function](#)
8. [Set the authentication information of the Java EE 6 function](#)
9. [Set the port numbers to be used by the Java EE 6 function](#)
10. [Select the JDK to be used by the Java EE 6 function](#)
11. [Select whether or not the Java environment information of this product is to be registered in the system](#)

12. [Verify the installation configuration](#)
13. [Installation begins](#)
14. [Installation is completed](#)

1. Stop all applications

Confirm that all applications are stopped.

2. Insert product DVD-ROM into the drive

Insert product DVD-ROM into the DVD-ROM drive of your computer.

The installer is automatically activated, and it opens the following window.



Click the [Installation] button to start installation.

The "User Account Control" dialog box may be displayed, depending on the operating system that is being used. When the dialog box is displayed, click [Continue] and continue with the installation.

Point

If autorun on the DVD drive is not enabled, execute the following command:

```
<DVD drive name>:\autorun.exe
```

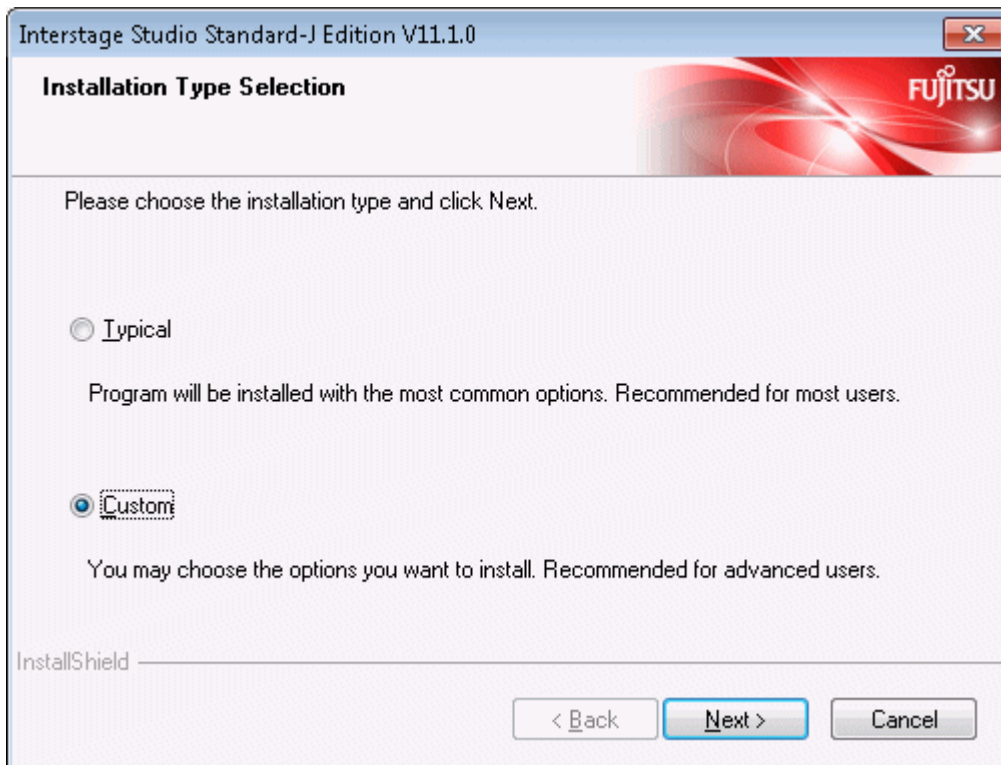
Information

Explanation of buttons

| Button | Outline |
|--------------------|--|
| Readme | Displays the Interstage Studio software release guide. |
| Installation Guide | Displays this manual. |
| Installation | Starts Interstage Studio installation. |
| Online Manual | Displays the online manual. |
| Exit | Ends Interstage Studio installation. |

3. Select [Custom]

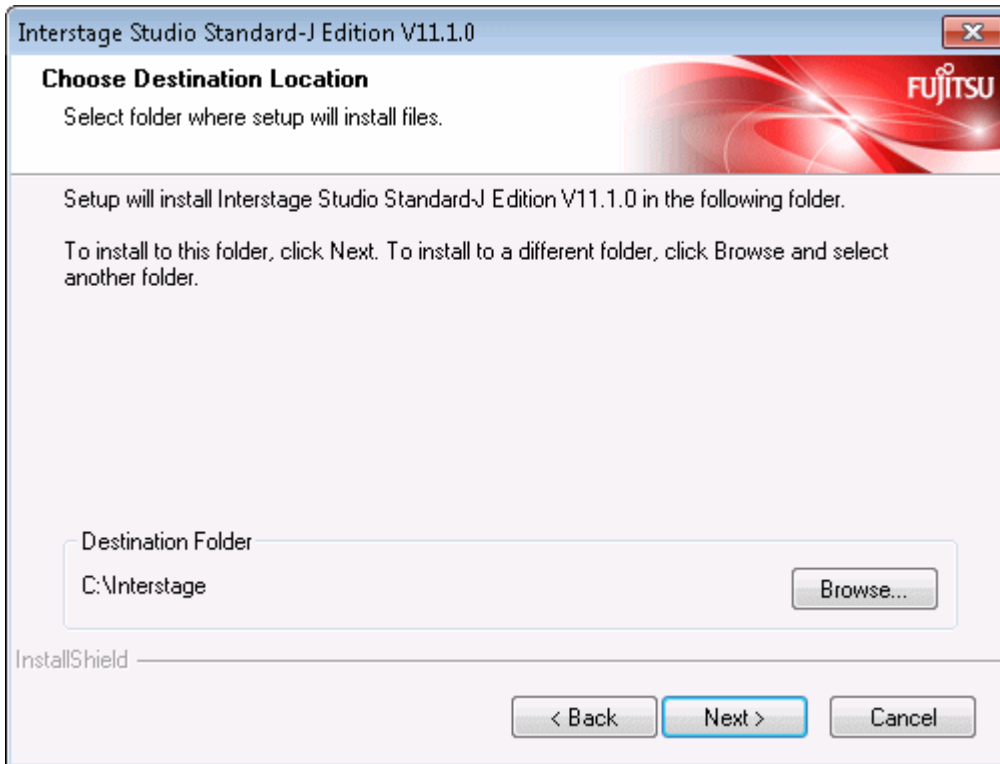
In the [Installation Type Selection] window, select [Custom] as the installation type, and click the [Next] button.



To cancel installation, click the [Cancel] button.

4. Select the installation folder

The [Choose Destination Location] window is displayed so that you can select the Interstage Studio installation folder.



The Interstage Studio installation folder is displayed as [Destination Folder].

- To install Interstage Studio in the displayed folder

Click the [Next] button.

- To change the installation folder

Click the [Browse] button to open the [Choose Folder] dialog box.

In the [Choose Folder] dialog box, select the installation folder, and click the [OK] button.

Confirm that the new installation folder is displayed as [Destination Folder] in the [Choose Destination Location] window, and click the [Next] button.



Note

Notes on the installation folder name

- If the folder specified as the installation destination for this product is the same as that of another product, check the documentation of each product before installation to ensure that subfolders and files do not coincide. Refer to "Folder Structure and Files" in the "Interstage Studio Standard-J Edition Software Release Guide" to check the folder configuration of this product.
- The following characters cannot be used in the installation folder name:
":", ";", "/", "*", "?", "<", ">", "(", ")", "|", "#", "%", "^", "!", "", ".", and double-byte characters
- The specifiable length of the installation destination folder name is up to 58 characters.
- When installing application server, you can use the following characters to specify the installation folder name:
 - Alphanumeric characters (a to z; A to Z; 0 to 9)
 - Spaces " "
 - Hyphens "-"
 - Underscores "_"

If a character other than the above is used, service registration or activation may fail and the installation process may hang. If the installation process hangs, refer to ["Action to be taken in the event that the installation process hangs"](#) and take the necessary action.

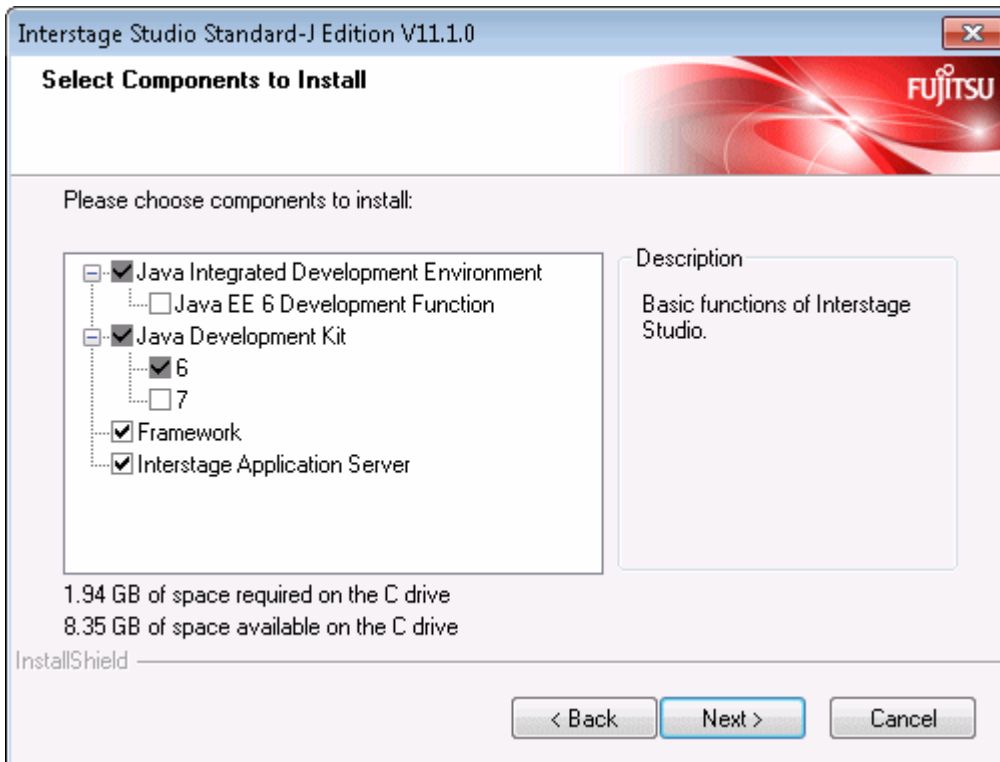
- If the folder that has been set as the installation folder is changed to a different folder, it might cause folders that have already been created to remain. If necessary, delete these folders.

5. Select the functions to be installed

In the [Select Components to Install] window, select (check) the functions (components) to be installed.

- **Checked:** Each selected component will be installed.
- **Unchecked:** A component that is not selected will not be installed.

A shaded component indicates one that is required by a selected component. When the component that requires a shaded component is unchecked, the shading is removed from the shaded component so that it can also be unchecked.



The table below lists components that can be selected in custom installation.

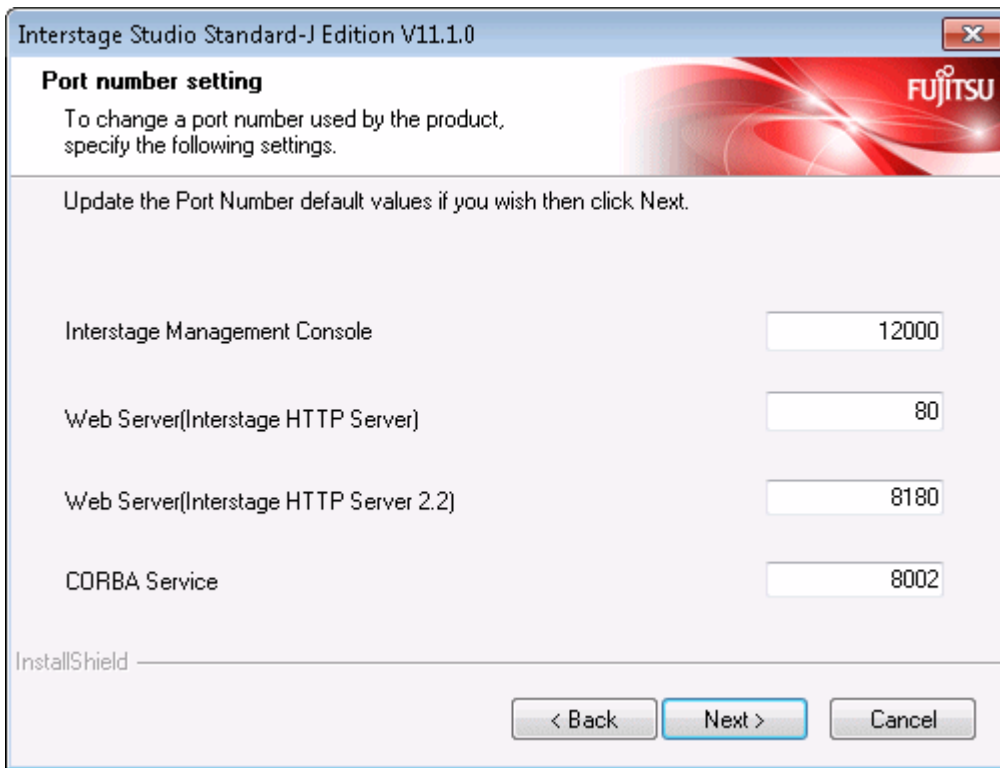
| Component | Outline | Initial state |
|--------------------------------|---|------------------|
| Java EE 6 Development Function | One of the components that make up the Java Integrated Development Environment. Select it when Java EE 6 application or Java application that uses JDK 7 is used for development. | Not selected |
| Java Development Kit | Component required for using Interstage Studio Select the version (6 or 7) of Java Development Kit to be installed. Java Development Kit 6 must always be selected because it is a necessary component. If Java EE 6 development function is selected, version 7 must be selected. | [6] is selected. |
| Framework | One of the components composing the operation test environment Select this component to use a framework. | Selected |

| Component | Outline | Initial state |
|-------------------------------|---|---------------|
| Interstage Application Server | <p>One of the components composing the operation test environment</p> <p>Select if performing server application operation tests in a standalone environment.</p> <p>If developing in combination with the Interstage Application Server client package, then clear [Interstage Application Server], then perform installation.</p> | Selected |

Select the components to be installed, and click the [Next] button.

6. Set the port numbers

If [Interstage Application Server] is selected as the function to be installed, then the [Port number setting] window will be displayed. In this window, specify the port numbers to be used by the application server function. The initial values are predefined. Check the values and overwrite them if changes are required.



The table below lists the initial values that are set for the respective ports.

| Function | Initial value of port number |
|---|------------------------------|
| Interstage Management Console | 12000 |
| Web Server (Interstage HTTP Server) | 80 |
| Web Server (Interstage HTTP Server 2.2) | 8180 |
| CORBA Service | 8002 |



Note

Note on the port number

- In the port number, specify an unused value between 1 and 65535.
If the specified port number is outside the range or already being used, the [Re-enter Port Numbers] window is displayed.

- When the [Re-enter Port Numbers] window is displayed, enter an unused port number and click the [OK] button. When the port number is not changed, click the [Ignore] button. In this case, please stop the application that uses the same port number after installing this product, and change the port number that the application uses.
- As the port numbers in the range below are always set as ephemeral ports, be careful when using them.
 - For Windows XP and Windows Server 2003: 1024 to 5000
 - For Windows Vista, Windows Server 2008 and later: 49152 to 65535

Click the [Next] button.

7. Set the port numbers to be used by the Java EE function

If "Interstage Application Server" is selected as the functions to be installed, then the [Java EE Function Port Number Settings] window will be displayed.

In this window, specify the port numbers to be used by the Java EE function. The default value is set in advance. Check this value and modify if necessary.

Interstage Studio Standard-J Edition V11.1.0

Java EE Function Port Number Settings

Set the port number to be used by the Java EE function if this port number is to be changed.

Update the Port Number default values if you wish then click Next.

HTTP Listener Port Number: 28080

HTTP Listener Port Number for Operation Management: 12001

IIOP Port Number: 23600

IIOP_SSL Port Number: 23601

IIOP_MUTUALAUTH Port Number: 23602

JMX_ADMIN Port Number: 8686

InstallShield

< Back Next > Cancel

The port numbers below are set as initial values:

| Function | Initial value of port number |
|--|------------------------------|
| HTTP Listener Port Number | 28080 |
| HTTP Listener Port Number for Operation Management | 12001 |
| IIOP Port Number | 23600 |
| IIOP_SSL Port Number | 23601 |
| IIOP_MUTUALAUTH Port Number | 23602 |
| JMX_ADMIN Port Number | 8686 |



Note

Note on the port number

- In the port number, specify an unused value between 1 and 65535.
If the specified port number is outside the range or already being used, the [Re-enter Port Numbers] window is displayed.
- When the [Re-enter Port Numbers] window is displayed, enter an unused port number and click the [OK] button.
When the port number is not changed, click the [Ignore] button. In this case, please stop the application that uses the same port number after installing this product, and change the port number that the application uses.
- As the port numbers in the range below are always set as ephemeral ports, be careful when using them.
 - For Windows XP and Windows Server 2003: 1024 to 5000
 - For Windows Vista, Windows Server 2008 and later: 49152 to 65535

Click the [Next] button.

8. Set the authentication information of the Java EE 6 function

If "Interstage Application Server" and "Java EE 6 Development Function" are selected as the functions to be installed, then the [Java EE 6 Function Authentication Information Settings] window will be displayed.

In this window, specify the admin user ID and password. In [Reenter Admin password], enter the same character string as in [Admin password].

Note

Notes at Entry Time

[Admin User ID]

- Specify a value between 1 and 255 characters long.
- Single-byte alphanumeric characters, "_", "-", and "." can be used.

[Admin password]

- Specify a value between 8 and 20 characters long.

- Single-byte alphanumeric characters, "_", "-", "", ".", "@", and "+" can be used.

Click the [Next] button.

9. Set the port numbers to be used by the Java EE 6 function

If "Interstage Application Server" and "Java EE 6 Development Function" are selected as the functions to be installed, then the [Java EE 6 Function Port Number Settings] window will be displayed.

In this window, specify the port numbers to be used by the Java EE 6 function. The default value is set in advance. Check this value and modify if necessary.

Interstage Studio Standard-J Edition V11.1.0

Java EE 6 Function Port Number Settings

Set the port number to be used by the Java EE 6 function if this port number is to be changed.

Update the Port Number default values if you wish then click Next.

| | |
|--|-------|
| HTTP Listener Port Number | 28282 |
| HTTPS Listener Port Number | 28383 |
| HTTP Listener Port Number for Operation Management | 12011 |
| IIOP Port Number | 23610 |
| IIOP_SSL Port Number | 23611 |
| IIOP_MUTUALAUTH Port Number | 23612 |
| JMX_ADMIN Port Number | 18686 |

InstallShield

< Back Next > Cancel

The port numbers below are set as initial values:

| Function | Initial value of port number |
|--|------------------------------|
| HTTP Listener Port Number | 28282 |
| HTTPS Listener Port Number | 28383 |
| HTTP Listener Port Number for Operation Management | 12011 |
| IIOP Port Number | 23610 |
| IIOP_SSL Port Number | 23611 |
| IIOP_MUTUALAUTH Port Number | 23612 |
| JMX_ADMIN Port Number | 18686 |



Note

Note on the port number

- In the port number, specify an unused value between 1 and 65535.
If the specified port number is outside the range or already being used, the [Re-enter Port Numbers] window is displayed.

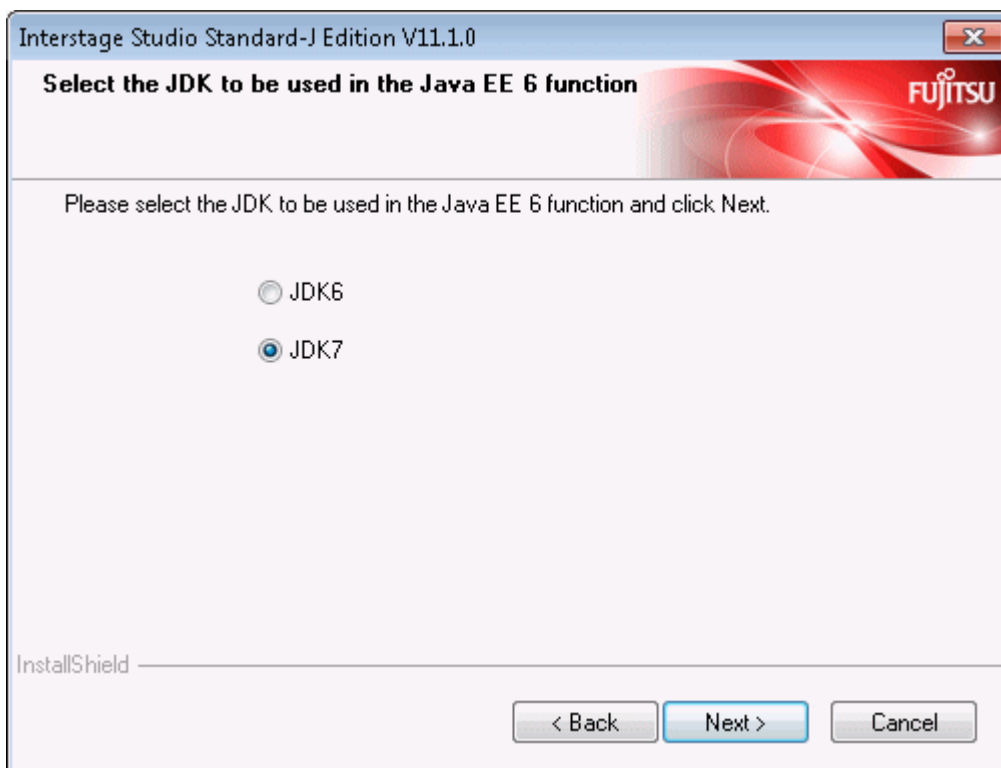
- When the [Re-enter Port Numbers] window is displayed, enter an unused port number and click the [OK] button. When the port number is not changed, click the [Ignore] button. In this case, please stop the application that uses the same port number after installing this product, and change the port number that the application uses.
- As the port numbers in the range below are always set as ephemeral ports, be careful when using them.
 - For Windows XP and Windows Server 2003: 1024 to 5000
 - For Windows Vista, Windows Server 2008 or later: 49152 to 65535

Click the [Next] button.

10. Select the JDK to be used by the Java EE 6 function

If "Interstage Application Server" and "Java EE 6 Development Function" are selected as functions to install, the [Select the JDK to be used in the Java EE 6 function] window is displayed.

Select the JDK version to use with the Java EE 6 function in this window. There is no need to change this if the Java EE 6 function is not going to be used.



Point

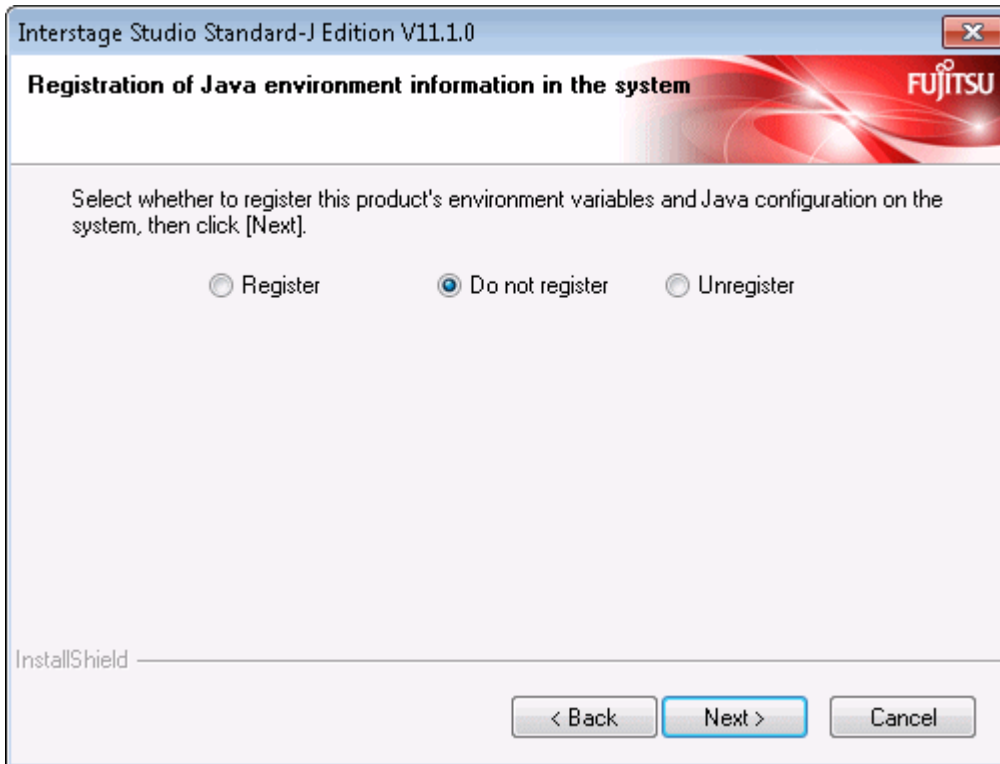
The value set in this window is only effective with the Java EE 6 function.

Click the [Next] button.

11. Select whether or not the Java environment information of this product is to be registered in the system

If the Interstage Application Server product is already installed on the computer, the [Registration of Java environment information in the system] window is displayed. Use this window to select whether or not the environment information of the Java installed by this product is to be registered in the system.

Note that [Unregister] is displayed only if the Java environment information of this product is already registered in the system.



- If registering the Java environment information of this product in the system:
Select [Register], and then click [Next].
- If not registering the Java environment information of this product in the system:
Select [Do not register], and then click [Next].
- If cancelling the Java environment information of this product that is already registered in the system:
Select [Unregister], and then click [Next].

Note

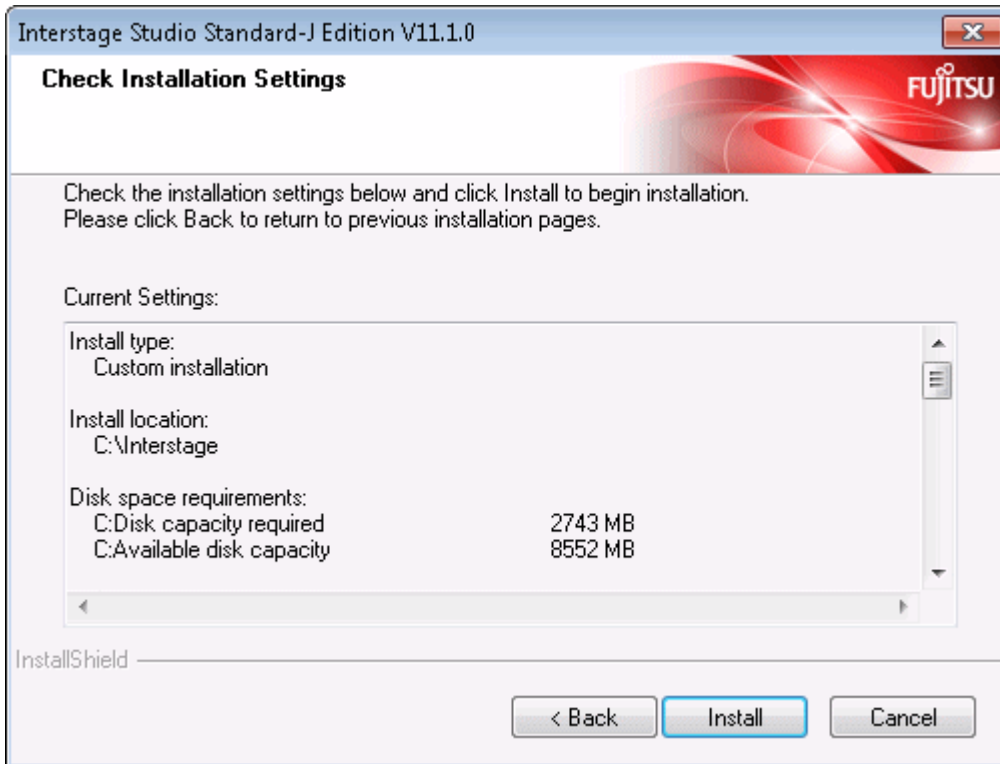
If [Register] is selected, the processing below is performed. The following points must be noted if JDK or JRE have already been installed by other products.

- Register in the system the information of the JDK and JBK plug-ins installed by this product.
- Set the system environment variables PATH, CLASSPATH, and JAVA_HOME.
Refer to "[Checking the environment](#)" for the path to add to the PATH and CLASSPATH environment variables and ensure that the variable lengths do not exceed the permitted length.

Click [Next].

12. Verify the installation configuration

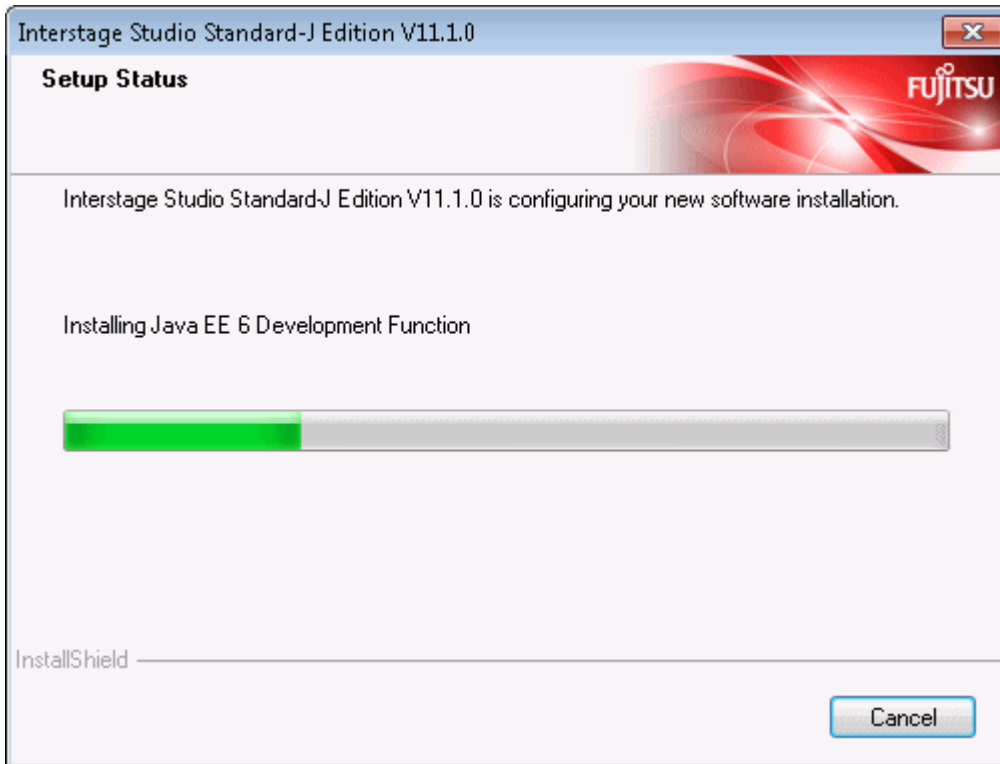
In the [Check Installation Settings] window, verify the installation configuration.



- When no problem is found
Click the [Install] button to start installation.
- To change the installation configuration
Click the [Back] button, and change the configuration.

13. Installation begins

The setup program begins to install the components required for application development and the operation test environment. The [Setup Status] window displays the progress of installation.



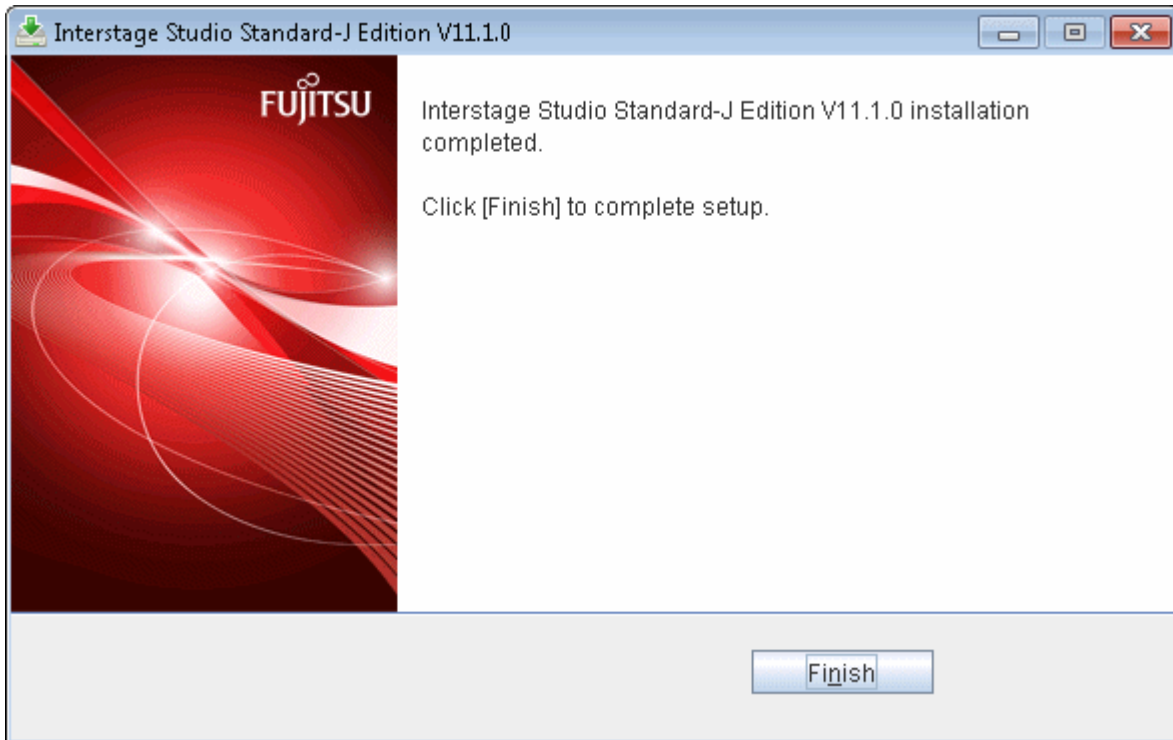
Note

Cancellation

While the [Setup Status] window is displayed, do not click [Cancel] or press the Alt and C keys at the same time. Otherwise, such cancellation causes the installation process to hang. In this event, refer to "[Action to be taken in the event that the installation process hangs](#)" and take the necessary action.

14. Installation is completed

When Interstage Studio installation is completed, the following window is displayed.



Click the [Finish] button. This ends Interstage Studio installation.

After clicking the [Finish] button, confirm that the installer icon disappears from the taskbar before beginning to use your computer.

Note

A dialog box shows you to restart the computer

If a file copy error occurs during installation, a dialog box will open to show about restarting the computer. In such cases, click the [Finish] button, and restart the computer.

If a file copy error occurs during installation, installation processing is completed when the computer is restarted.

Besides, when fast startup is enabled due to the use of Windows 8, please make sure the system is restarted by selecting [Restart] from the [Power] menu of [Settings] charm.

2.3.3 Overwrite Installation

This section explains how perform an overwrite installation.

1. [Stop all applications](#)
2. [Insert product DVD-ROM into the drive](#)
3. [The \[Installation information\] window is displayed](#)
4. [The \[Select Components to Install\] window is displayed](#)
5. [Verify the new installation configuration](#)
6. [Start the overwrite installation](#)
7. [Installation is completed](#)

1. Stop all applications

Confirm that all applications are stopped.

2. Insert product DVD-ROM into the drive

Insert product DVD-ROM into the DVD-ROM drive of your computer.

The installer is automatically activated, and it opens the following window.



Click the [Installation] button to start installation.

The "User Account Control" dialog box may be displayed, depending on the operating system that is being used. When the dialog box is displayed, click [Continue] and continue with the installation.

Point

If autorun on the DVD drive is not enabled, execute the following command:

```
<DVD drive name>:\autorun.exe
```

Information

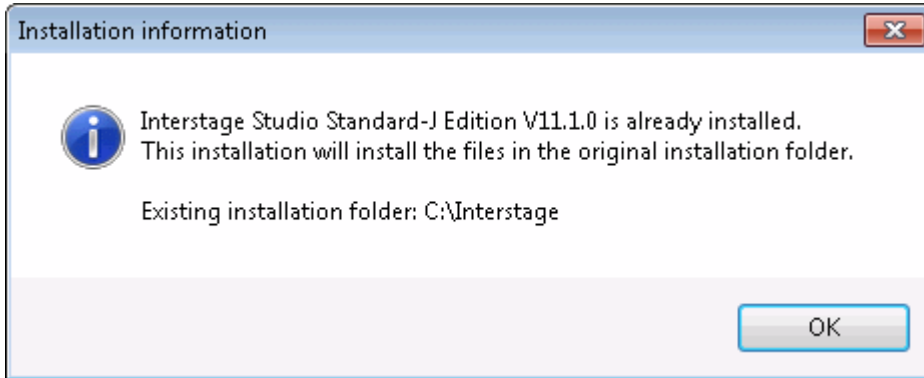
Explanation of buttons

| Button | Outline |
|--------------------|--|
| Readme | Displays the Interstage Studio software release guide. |
| Installation Guide | Displays this manual. |
| Installation | Starts Interstage Studio installation. |
| Online Manual | Displays the online manual. |

| Button | Outline |
|--------|--------------------------------------|
| Exit | Ends Interstage Studio installation. |

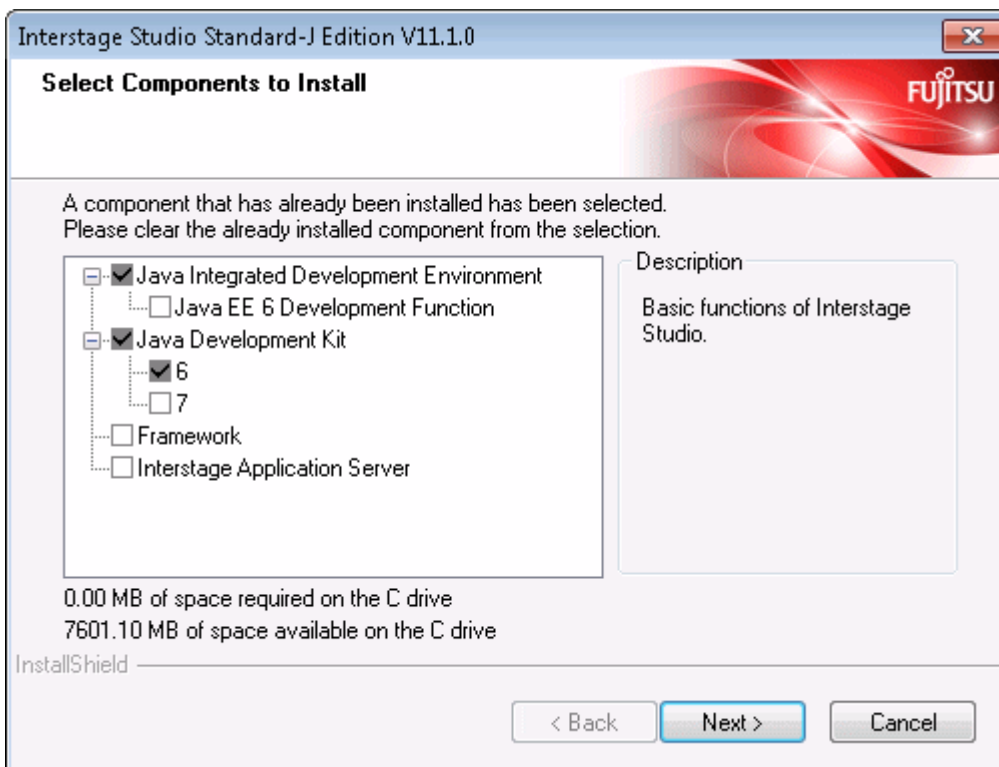
3. The [Installation information] window is displayed

Click the [OK] button.



4. The [Select Components to Install] window is displayed

Of the functions (components) listed in the [Select Components to Install] window, the installed functions have check marks.



In the [Select Components to Install] window, change the current installation configuration.

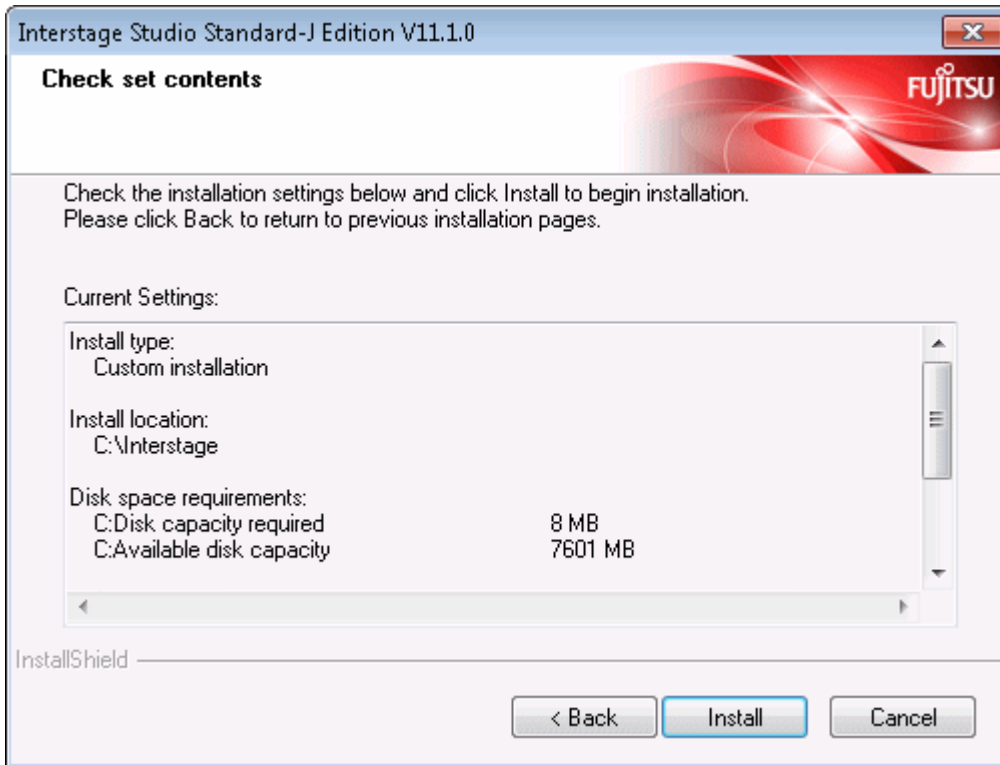
- **Unchecked function:** The function will be uninstalled.
The shaded functions are required for using Interstage Studio, so they cannot be uninstalled.
- **Checked function:** The function will be installed as an additional function.

Modify the installation content, then click the [Next] button.

The subsequent window operations will differ depending on whether installation or uninstall is performed. For details on operation procedures, refer to "[2.3.2 Custom Installation](#)".

5. Verify the new installation configuration

In the [Check set contents] window, verify the new installation configuration.



- When no problem is found

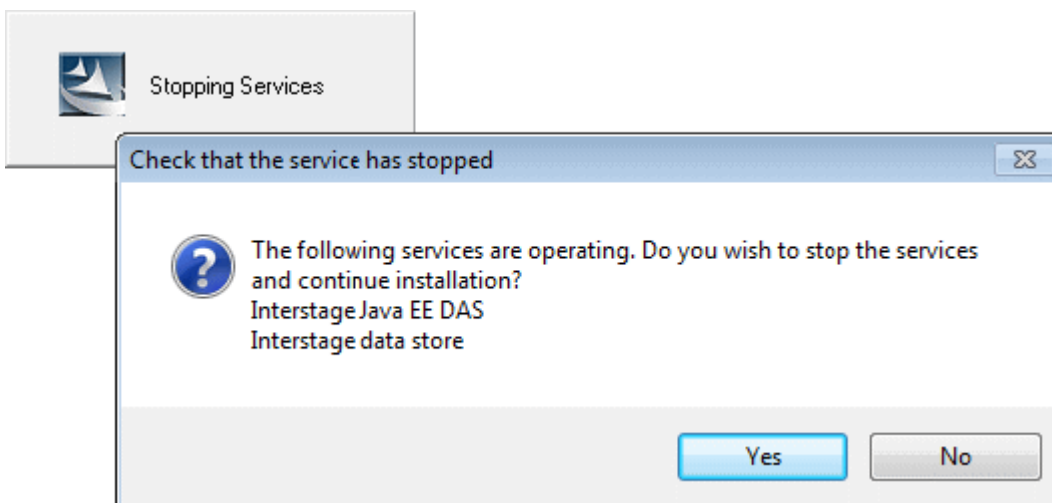
Click the [Install] button to start installation. Take care to verify the new installation configuration because you cannot click the [Cancel] button to cancel installation once installation begins.

- To change the installation configuration

Click the [Back] button, and change the configuration.

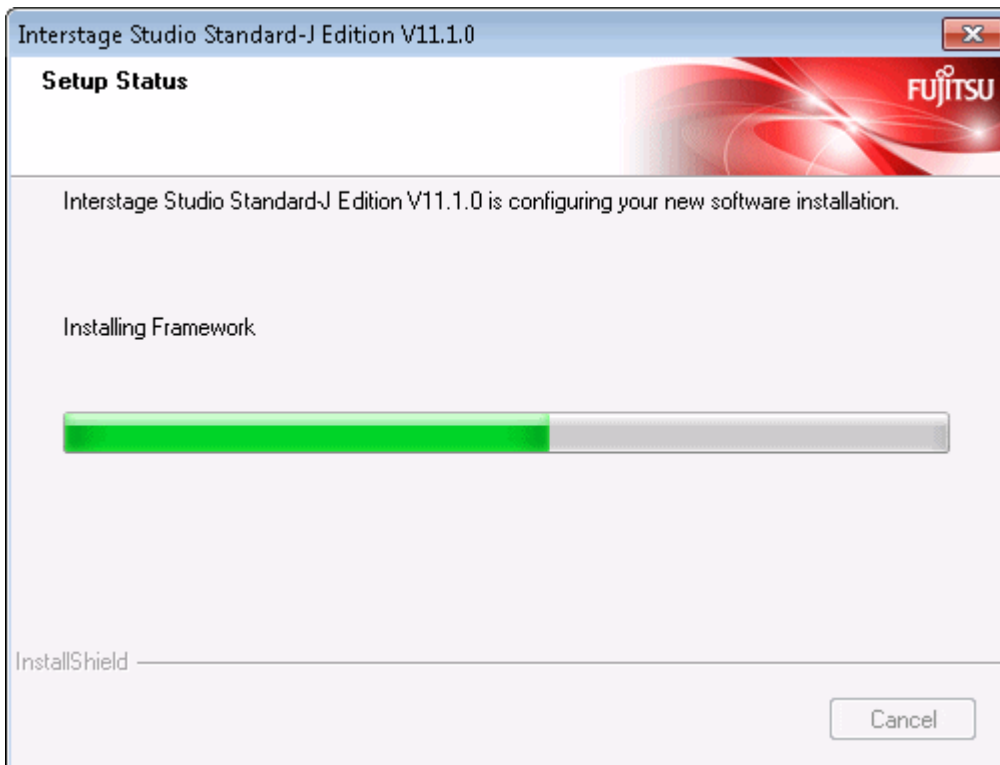
6. Start the overwrite installation

Before starting the overwrite installation, stop the application server service. If the service is active, the [Check that the service has stopped] dialog box opens to ask you to confirm that the service is stopped.



To start the overwrite installation, click the [Yes] button. Installation begins after the application server service is stopped.

The [Setup Status] window displays the progress of installation.



7. Installation is completed

When the overwrite installation is completed, a dialog box shows that restart the computer is necessary.



Click the [Finish] button.
Restart the computer.

Information

When fast startup is enabled due to the use of Windows 8

To make the overwrite installation enabled, please shut down the system completely before restarting it. Please make sure the system is restarted by selecting [Restart] from the [Power] menu of [Settings] charm.

2.4 Post-installation Work

Deleting unnecessary folders

During installation, if [Cancel] is clicked to cancel installation, the installation folder specified as the installation destination folder of this product may remain. Delete the folder as necessary.

Switching to execute mode for the Terminal Services

If a switch was made to install mode for the Terminal Services before installation, execute the following command to switch to execute mode for the Terminal Service:

```
CHANGE USER /EXECUTE
```

Online manuals

The minimum number of Interstage Studio online manuals required for Java application development are installed. Other Interstage Studio online manuals can be selectively installed after Interstage Studio installation. For details, refer to the "Interstage Studio Standard-J Edition Software Release Guide".

Services for the application server

Services required for the management of the application server are under the stop status when the application server is installed. To use the application server functionality such as the Interstage Java EE Management Console, start the service beforehand by using the Interstage Management Service Operation Tool.

To start the Interstage Management Service Operation Tool, select [All Programs] > [Interstage Studio V11.1] > [Interstage Management Service Operation Tool] from the [Start] menu. For details about the Interstage Management Service Operation Tool, refer to the Help document that is displayed by clicking the [Help] from the tool window.

Enhancing security for installed resources

To prevent access to folders or files installed onto an NTFS formatted drive by an unspecified user, access authority can be changed by executing the `issetfoldersecurity` command after the installation.

For details of `issetfoldersecurity`, refer to the "Interstage Application Server Reference Manual (Command Edition)".

For a general user (a user that is not an Administrator user and does not belong to the Administrators group) to be able to execute the following application server operations, that user must have access authority to all folders or files under the Interstage Studio installation folder. In this case, as above, use the `issetfoldersecurity` command to specify the user name (or group name).

- Execution of the following CORBA Service Commands:
 - `odlistns`
 - `IDLc`
 - `odlistir`
- Operation of a CORBA program that uses the `odwin.dll`
- Execution of the EJB Service Command
- Execution of the WorkUnit Management Command
- Operation of the Interstage API
- Execution of the Event Service Command
- Execution of the JMS Operating Command

- When utilizing a JMS listener that uses Durable Subscription
- Execution of the Backup Command
- When Interstage certificate authority is used and SSL certificates or encryption is employed.

Creating IJServers, IJServer Clusters, and CORBA WorkUnits

If IJServer (MyDebug/My1VMDebug), IJServer Cluster (MyDebugJEE), and CORBA WorkUnit (MyCORBADebug) are required for operation confirmation, refer to the following and create them:

- If IJServer (MyDebug/My1VMDebug) is required, refer to "Migrating J2EE 1.4 Applications" > "J2EE Application Common Items" > "Preparing the Deployment Destination that Verifies Application Operation" in the "Interstage Studio User's Guide".
- If IJServer Cluster (MyDebugJEE) is required, create it using the Interstage Java EE Admin Console or the asadmin command. Refer to "Items Common to Java EE 5 Applications" > "Task" > "Preparing the Deployment Destination for Verifying Application Operation" in the "Interstage Studio User's Guide" for details.
- If CORBA WorkUnit (MyCORBADebug) is required, create it using the Interstage Management Console or the isaddwudef command. Refer to the "Interstage Application Server Operator's Guide" for details.

Developing Java EE 6 applications

To develop Java EE 6 applications using the Java EE 6 workbench, add the operation target server to the Server view beforehand. Refer to the "Interstage Studio User's Guide" > "Common Subject Matter Regarding Java EE 6 Applications" > "Preparing to Create Applications" > "Preparing to Operate Servers" for details.

2.5 Troubleshooting during Installation

If environment variable settings failed

If any of the following messages were displayed when installation ended, the environment variable settings failed:

- Setup of a required environment variable for Interstage Studio was not completed.
Please set the PATH variable as a system environment variable with reference to the following files.
- Setup of a required environment variable for Interstage Studio was not completed.
Please set CLASSPATH as a user environment variable with reference to the following files.
- Setup of a required environment variable for Interstage Studio was not completed.
With reference to the following files, please set the PATH variable as a system environment variable, and set the CLASSPATH variable as a user environment variable.

In the above case, use the procedure below to set the PATH and CLASSPATH system environment variables.

1. Display the contents (variable values) of PATH and CLASSPATH.

- Windows XP
Double-click the [System] icon in [Control Panel], select the [Advanced] tab, and click the [Environment Variables] button. Select "Path" or "CLASSPATH" in [System variables], click the [Edit] button, and the [Edit System Variable] window opens. The current variable value is displayed in the [Variable value] box.
- Windows Server 2003
Double-click the [System] icon in [Control Panel], select the [Advanced] tab, and click the [Environment Variables] button. Select "Path" or "CLASSPATH" in [System variables], click the [Edit] button, and the [Edit System Variable] window opens. The current variable value is displayed in the [Variable value] box.
- Windows Vista, Windows Server 2008
Select [System and Maintenance] from [Control Panel]. Next, select [System], and click [Change settings]. Select the [Advanced] tab, and click [Environment Variables]. Select "Path" or "CLASSPATH" in [System variables], click the [Edit] button, and the [Edit System Variable] window opens. The current variable value is displayed in the [Variable value] box.
- Windows 7, Windows 8, Windows Server 2008 R2, Windows Server 2012
Select [System and Security] from [Control Panel]. Next, select [System], and click [Change settings]. Select the [Advanced]

tab, and click [Environment Variables]. Select "Path" or "CLASSPATH" in [System variables], click the [Edit] button, and the [Edit System Variable] window opens. The current variable value is displayed in the [Variable value] box.

2. Delete unnecessary paths.
3. Add the variable values specified in each of the following files to the respective environment variables:
 - <Installation folder>\IDE\1101\path.txt
Values of the PATH variable. Add them to system environment variables.
 - <Installation folder>\IDE\1101\classpath.txt
Values of the CLASSPATH variable. Add them to user environment variables.
4. Save the settings.
5. Restart the computer.

Action to be taken in the event that the installation process hangs

If the installation folder name contains an invalid character or cancellation is performed while the setup status is displayed, a pop-up message indicating a service registration or activation failure may appear, and the installation process may hang.

In such cases, refer to "[Appendix B Deleting an Installed Environment](#)", manually delete Interstage Studio resources and information, and then reinstall this product.

If the Java EE function setup fails

If the system outputs the following message during the installation, it may fail to start the Interstage Java EE DAS service and the Interstage Java EE Node Agent service subsequently.

- It failed in the execution of ijinit.

In this case, please execute the ijinit command to initialize the Java EE operating environment after the installation is completed. For more information about the ijinit command, please refer to "Interstage Application Server Java EE Operator's Guide".

If the Java EE 6 function setup fails

When the dialog shows "An error occurred in a setup of Java EE 6" during the installation, please check the f5drinst_1101.log that the system outputs under the environment variable TMP folder.

If a message beginning with IJ6INIT is output to the above file, follow the action advised in it to remove the cause of the error, and then perform installation again.

Chapter 3 Uninstallation Tasks

This chapter explains how to uninstall Interstage Studio. Also, uninstall Interstage Studio with the privilege of the computer administrator or a member of the Administrators group.



The explanation of uninstallation provided in this chapter presumes that Interstage Studio was installed with "Typical installation" selected as the installation type.

3.1 Preparation for Uninstallation

Perform the following tasks before performing uninstallation:

- [Stopping applications](#)
- [Saving resources](#)
- [Other](#)

Stopping applications

Check the following items, and take appropriate action as necessary:

- Stopping applications

Stop all the applications.

If a resource such as a disk or registry used by Interstage Studio is being used by an application (such as an event viewer, explorer, or registry editor) during Interstage Studio uninstallation, uninstallation may fail.

- Screensaver

If a screensaver is enabled, the uninstaller may not operate stably. Disable the screensaver before starting uninstallation.

Saving resources

Save resources of the Java integrated development environment and operation test environment as necessary.

- Java integrated development environment

User resources are stored in the folders listed below. If either of the folders contains stored user resources, the folder remains undeleted, even after uninstallation. If these user resources are not required, manually delete them after uninstallation. If the workspace folder is moved from the default location, check the resources under that folder.

- <User's-home-folder>\Interstage Studio\V11.1.0
- <User's-home-folder>\Interstage Studio\V11.1.0_je6
- <User's-documents-folder>\Interstage Studio\V11.1\workspace
- <User's-documents-folder>\Interstage Studio\V11.1\workspace_je6

- Operation test environment

For details on saving resources related to application servers, refer to the "Interstage Application Server Operator's Guide".

Other

Check the following items, and take appropriate action as necessary:

- Switching to install mode for the Terminal Services

If the Terminal Services is in execute mode, the mode must be switched to install mode.

Before starting Interstage Studio uninstallation, execute the following command to switch to install mode for the Terminal Services:

3.2 Notes on Uninstallation

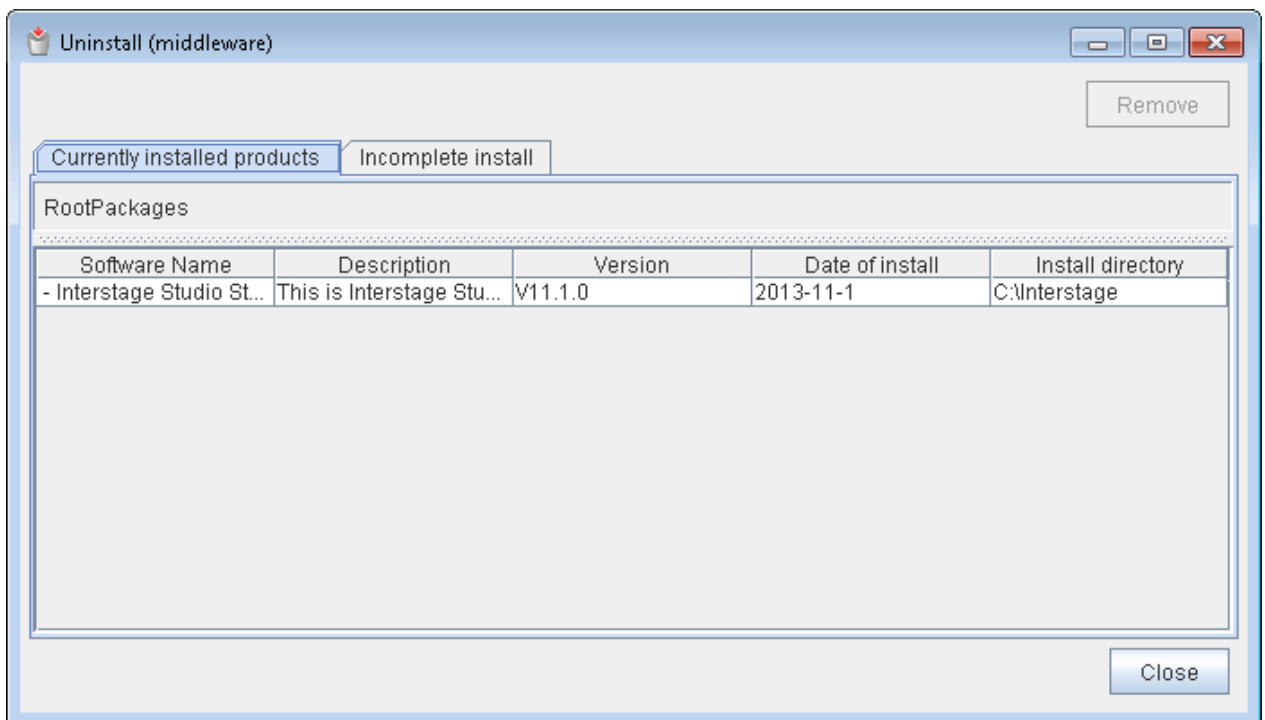
This section provides notes on uninstallation.

- If uninstallation is attempted immediately after the computer is started, it may fail because services are dedicated to startup processing. In this event, wait a while before retrying uninstallation.
- If the following message is output, wait at least 10 minutes before retrying uninstallation:
The following services have not been stopped.
Interstage JServlet(OperationManagement)
- If [Register] was selected in the [Registration of Java environment information in the system] window during installation, the Java environment information that this product registered in the system is deleted when this product is uninstalled.
- During uninstallation, if uninstallation is aborted, it may no longer be possible to complete uninstallation. In this event, refer to "[Appendix B Deleting an Installed Environment](#)", and manually delete Interstage Studio resources and information.

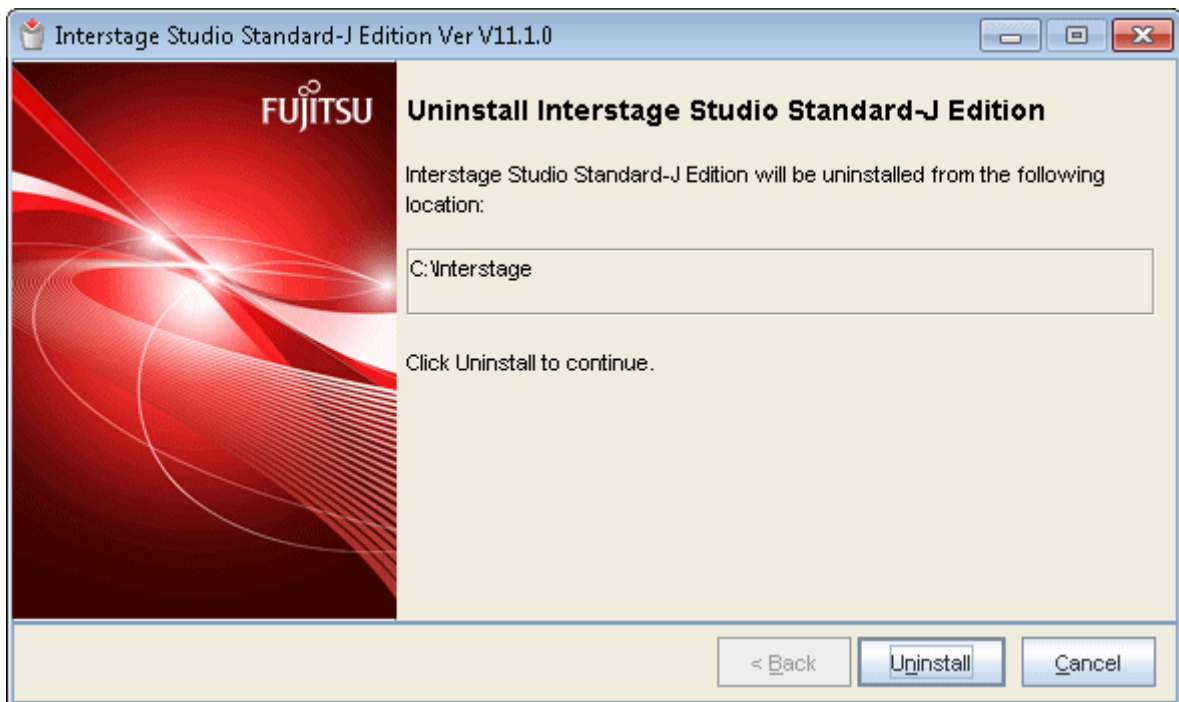
3.3 Uninstallation

Uninstall Interstage Studio as follows:

1. Click [All Programs] > [Fujitsu] > [Uninstall (middleware)] in the Start menu.
The [Uninstall (middleware)] window is displayed.



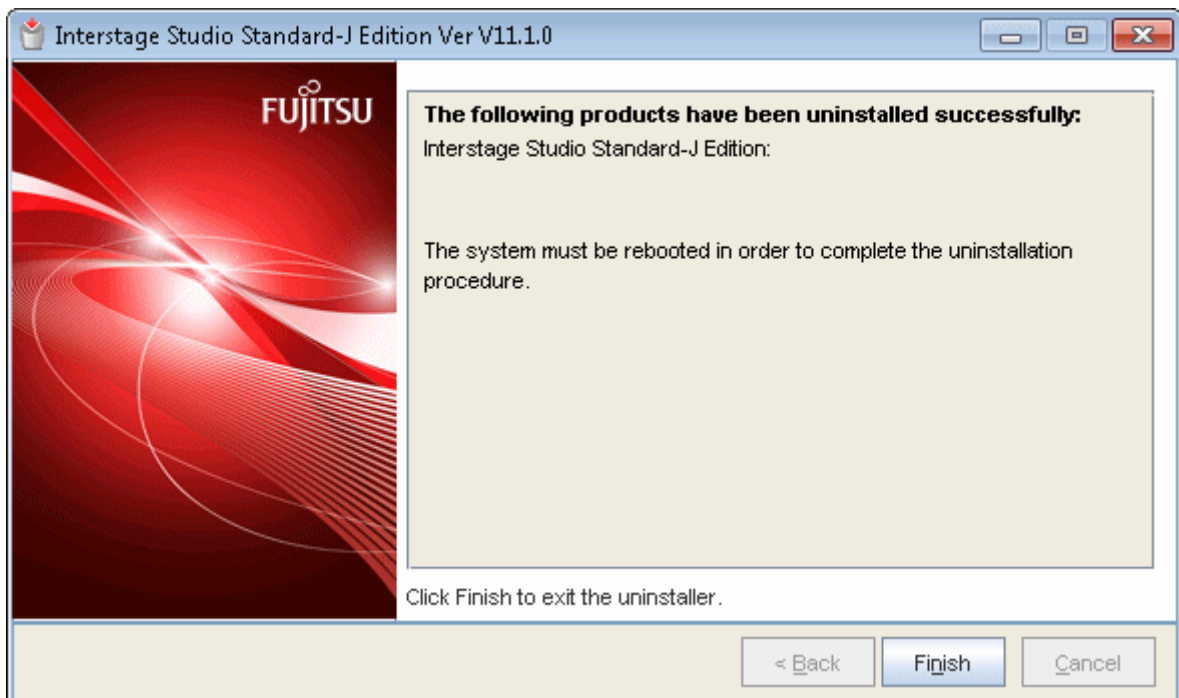
2. From [Software Name], select [Interstage Studio Standard-J Edition] and click [Remove]. The following window is displayed.



Check the product name, and if it is correct, click [Uninstall]. Click [Cancel] to cancel uninstallation.

Click [Uninstall] to start uninstalling Interstage Studio.

3. After uninstallation is completed, the following window is displayed.



Restart the computer after closing this window and the [Uninstall (middleware)] window.

Information

When fast startup is enabled due to the use of Windows 8

To make the uninstallation enabled, please shut down the system completely before restarting it.
Please make sure the system is restarted by selecting [Restart] from the [Power] menu of [Settings] charm.

.....

Information

.....

If add-on components are installed, uninstallation of add-on components may be required separately. For details, refer to "[Appendix A Add-on Components](#)".

.....

Point

.....

As the following components are shared by Fujitsu middleware products, they are not uninstalled even if this product is uninstalled:

- Uninstall (middleware)
-

3.4 Post-uninstallation Work

This section explains the work to be performed after Interstage Studio is uninstalled.

Deleting folders

After Interstage Studio is uninstalled, some subfolders and files may remain in the Interstage Studio installation folder or user's home folder. Delete the unnecessary subfolders and files remaining in the Interstage Studio installation folder and user's home folder as necessary.

Java integrated development environment folders

If plug-ins that extend workbench functions have been installed by other products, the folders shown below remain even when this product is uninstalled.

Refer to the documentation of the product that provided the plug-in and delete these folders if they are not required.

- <installation folder>\IDE\1101_WB34\eclipse\dropins
- <installation folder>\IDE\1101_WB34\eclipse\features
- <installation folder>\IDE\1101_WB34\eclipse\plugins
- <installation folder>\IDE\1101_WB36\eclipse\configuration
- <installation folder>\IDE\1101_WB36\eclipse\dropins
- <installation folder>\IDE\1101_WB36\eclipse\features
- <installation folder>\IDE\1101_WB36\eclipse\p2
- <installation folder>\IDE\1101_WB36\eclipse\plugins

If user resources have been stored in the folders shown below, these folders remain even after uninstalling Interstage Studio.

If the user resources are unnecessary, delete them:

- <User's-home-folder>\.Interstage Studio\V11.1.0
- <User's-home-folder>\.Interstage Studio\V11.1.0_je6
- <User's-documents-folder>\Interstage Studio\V11.1\workspace
- <User's-documents-folder>\Interstage Studio\V11.1\workspace_je6

An .eclipse folder is created at the location below when a CVS repository is added to the workbench, and this folder remains even after this product is uninstalled. Delete this folder if it is not required.

- <User's-home-folder>\.eclipse

Delete the following folders because they are not required:

- <installation folder>\IDE\1101\uiextension

Application server folders

If an application server as a component of the operation test environment has been installed, this operation is required. Delete any of the following folders that remain after uninstallation:

- <installation folder>\APS\etc
- <installation folder>\APS\var
- <installation folder>\APS\var\repository (*1)
- <installation folder>\APS\F3FMihs (*2)
- < installation folder >\APS\F3FMahs (*3)
- <installation folder>\APS\ODWIN\etc
- <installation folder>\APS\ODWIN\var
- <installation folder>\APS\td\bin
- <installation folder>\APS\td\etc
- <installation folder>\APS\td\isp
- <installation folder>\APS\td\var (*4)
- <installation folder>\APS\td\trc
- <installation folder>\APS\MessageQueueDirector
- <installation folder>\APS\Enabler
- <installation folder>\APS\EJB\var
- <installation folder>\APS\EJB\etc
- <installation folder>\APS\eswin\etc
- <installation folder>\APS\eswin\var
- <installation folder>\APS\Extp\etc
- <installation folder>\APS\F3FMso\ssocm
- <installation folder>\APS\F3FMso\ssoatcsv (*5)
- <installation folder>\APS\F3FMso\ssoatcag (*5)
- <installation folder>\APS\F3FMso\ssofsv (*5)
- <installation folder>\APS\F3FMso\ssoatzag (*5)
- <installation folder>\APS\GUI\trc
- <installation folder>\APS\IREP
- <installation folder>\APS\IREPSDK
- <installation folder>\APS\J2EE
- <installation folder>\APS\jms
- <installation folder>\APS\jms\etc
- <installation folder>\APS\jms\var
- <installation folder>\APS\ots\etc (*6)
- <installation folder>\APS\ots\var (*6)
- <installation folder>\APS\F3FMisjee

- <installation folder>\APS\F3FMisje6 (*7)
- < installation folder >\APS\F3FMpcmi

*1: If "Repository Storage Destination" of the business configuration management function has been changed, delete it. Do not delete this folder if you intend to reuse previous information in the next installation. Information can be inherited by specifying the same folder in the next installation.

*2: The Web server (Interstage HTTP Server) environment definition file and log file are saved here. If necessary, move them from this location before the delete operation.

*3: The Web server (Interstage HTTP Server 2.2) environment definition file and log file are saved here. If necessary, move them from this location before the delete operation.

*4: If the Systemwalker CentricMGR Operation Management Server or the Systemwalker Centric Manager Operation Management Server has been installed, do not delete C:\Interstage\APS\td\var\IRDB.

*5: The Interstage Single Sign-on environment definition file is saved here. If necessary, move it from this location before the deletion.

*6: If there are files or folders under the folder, delete everything including those files or folders.

*7: Java EE 6 environment definition files and log files are stored in this folder. If necessary, back up the files in the folder before deleting it.

JDK folder

If user resources remain in JDK, the JDK folder indicated below remains, even after Interstage Studio is uninstalled. If the user resources are not required, delete the folder.

- Assuming JDK 6 is installed
 <installation folder>\IDE\JDK6
- Assuming JDK 7 is installed
 <installation folder>\IDE\JDK7

Note that if another application is installed or updated after Interstage Studio is installed, its files may be copied to the JDK folder. These files also remain in the folder after Interstage Studio is uninstalled. Delete the appropriate files after uninstallation.

Example: If Windows Media Player is updated after Interstage Studio is installed, WMPNS.jar is copied to the following folder:

- Assuming JDK 6 is installed:
 <installation folder>\IDE\JDK6\jre\lib\applet
- Assuming JDK 7 is installed:
 <installation folder>\IDE\JDK7\jre\lib\applet

Operations for reinstalling this product

To reinstall this product after it is uninstalled, it is necessary to restart the computer before the reinstallation. What is more, the installation resource which is used previously must be deleted before this product is reinstalled.

Deleting environment variable

"." might remain in CLASSPATH of the system environment variable. Please delete it when it is unnecessary.

If a path has been manually set in PATH or CLASSPATH of a system environment variable, the path may remain after uninstallation. Delete the path when it is unnecessary.

If an application server was installed

The user account (oms) used to access a repository is registered with the system. If the oms account is normally not used and not required, delete the user account (oms).

When deleting the oms account, also delete the home folder of the oms account as necessary.

If Microsoft Visual C++ 2005 Redistributable Package used by the application server is no longer necessary, perform the following step to delete the package:

- For Windows Vista, Windows 7, Windows 8, Windows Server 2008 and Windows Server 2012
 Select "Microsoft Visual C++ 2005 Redistributable" from the program list displayed in the [Control Panel] > [Programs and Features] menu, and click [Uninstall] to uninstall the package.

- For Windows XP and Windows Server 2003

Select [Control Panel] > [Add/Remove Programs] from the menu bar, select "Microsoft Visual C++ 2005 Redistributable" from the displayed list of applications, and then click [Remove] to uninstall the package.

After Interstage Java EE 6 is uninstalled, if there is residue of "Interstage PCMI(isje6)" in the service, please execute the sc command as follows to delete the "Interstage PCMI(isje6)" service.

```
sc delete "Interstage PCMI(isje6)"
```

Switching to execute mode for the Terminal Services

If the mode for the Terminal Services was switched to install mode before uninstillation, execute the following command to switch to execute mode for the Terminal Services:

```
CHANGE USER /EXECUTE
```


Appendix A Add-on Components

Interstage Studio provides add-on components as functions (software) that can be added to this product and used. This appendix explains how to install and uninstall the add-on components provided by Interstage Studio.

The table below lists the add-on components provided by Interstage Studio.

| Component | Description |
|---------------------------------------|--|
| Fujitsu XML Processor | Fujitsu XML Processor provides basic functions for developing applications using documents in the eXtensible Markup Language (XML) format. |

A.1 Fujitsu XML Processor

This section explains how to install and uninstall Fujitsu XML Processor. Also, install and uninstall Fujitsu XML Processor with the privilege of the computer administrator or a member of the Administrators group.

Installation Procedure

To install this component, execute the installer file indicated in the table below.

1. Insert product DVD-ROM into the DVD-ROM drive of your computer.
2. From Explorer, open the component storage folder as indicated in the table.
3. If file extensions are not displayed, temporarily change the settings of the Explorer folder options to display file extensions.
4. Execute the installer file.
5. The installer starts. Follow the instructions from the installer to install the component.

| Component storage folder | Readme file | Installer file |
|--------------------------|-------------|----------------|
| \AddOn\FujitsuXML | Readme.txt | setup.exe |

Uninstallation Procedure

When this product is uninstalled, Fujitsu XML Processor is not uninstalled together. Refer to the readme file shown in the table and uninstall this component.

Manuals for Fujitsu XML Processor

When Fujitsu XML Processor is installed, related manuals are installed at the same time. Refer to the installed Fujitsu XML Processor manuals as follows:

- Select [Start] > [All Programs] > [Fujitsu XML Processor V5.2].

The following manuals for Fujitsu XML Processor are provided with the Interstage Studio online manuals:

- Fujitsu XML Library Java V5.2 JAXP API Specification
- Fujitsu XML Library Java V5.2 API Specification

You can install the online manual for an add-on component after Interstage Studio installation.

For details on how to install and browse the Interstage Studio online manuals, refer to the "Interstage Studio Standard-J Edition Software Release Guide".

Appendix B Deleting an Installed Environment

Reinstallation or uninstallation of Interstage Studio may fail because of unexpected errors that occur during installation or uninstallation. In such cases, the original environment can be restored when the procedures described below are used to delete all related resources from the hard disk. If any related products are installed on the same system, uninstall the products before starting the procedures.

Note

- The procedure should be done using the administrator account or the account that belongs to the administrator group of the computer.
- Depending on whether or not a function is installed, the described registry keys, folders, and environment variables may not exist. In this case, ignore these and continue work.
- The explanations below include information related to editing registries. Before editing registries, it is essential to understand recovery methods in case problems occur. Refer to "Restore the Registry" in the Help menu of the registry editor (regedit.exe) for recovery method details.
Registries are extremely important files in a Windows system. If operation fails, Windows may not start. It is therefore important to perform the associated tasks very carefully.

In the example explained here, "C:\Interstage" is used as the product installation destination, and the product is installed in a 32-bit OS. To install the product in a 64-bit OS, substitute as shown in the table below when reading the explanations.

| 32-bit OS | 64-bit OS |
|---|---|
| HKEY_LOCAL_MACHINE\SOFTWARE\Fujitsu | HKEY_LOCAL_MACHINE\SOFTWARE\Wow6432Node\Fujitsu |
| HKEY_LOCAL_MACHINE\SOFTWARE\Microsoft\Windows | HKEY_LOCAL_MACHINE\SOFTWARE\Wow6432Node\Microsoft\Windows |
| C:\Program Files | C:\Program Files (x86) |

"Specific function" appearing hereafter indicates the following functions:

- Framework
- Application Server

If you are unclear about "Another product equipped with ..." described below, contact Fujitsu technical support.

Uninstalling Related Products

If any products related to this product are installed on the computer, uninstall them. See the software release guide of the products for details on their uninstallation.

Deleting Product Components

The procedures for uninstalling components of this product are described below.

1. Stopping the Services

Stop the following services:

- EventFactory
- EventService
- FJapache
- InterfaceRep_Cache Service
- InterfaceRep_Cache_e Service
- INTERSTAGE
- Interstage data store

- Interstage Directory Service
- Interstage HTTP Server 2.2
- Interstage Java EE DAS
- Interstage Java EE Node Agent
- Interstage JServlet(OperationManagement)
- Interstage Message Queue Broker
- Interstage Message Queue Broker(ISJE6)
- Interstage Operation Tool
- Interstage Operation Tool(FJapache)
- Interstage PCMI(isje6)
- Interstage Server Monitor Service
- Interstage Server Monitor Service(Cache Manager)
- Naming Service
- ObjectTransactionService
- OD_start
- TransactionDirector

2. Deleting Registry Keys

Execute the registry editor (REGEDIT.EXE) that is in the Windows system directory. Delete all the keys under the following keys:

- Keys under HKEY_LOCAL_MACHINE\SOFTWARE\Fujitsu
 - APWORKS (*1)
 - Interstage Studio (*1)

*1: Do not delete if there is a key other than "1101" under the HKEY_LOCAL_MACHINE\SOFTWARE\Fujitsu\Install\Interstage IDE key
- Keys under HKEY_LOCAL_MACHINE\SOFTWARE\Fujitsu\FJQSS
 - INTS-STDSJEG1_V11.1.0
- Keys under HKEY_LOCAL_MACHINE\SOFTWARE\Fujitsu\Install
 - Interstage Studio (*2)

*2: Do not delete if there is a key other than "1101" under HKEY_LOCAL_MACHINE\SOFTWARE\Fujitsu\Install\Interstage IDE key
- Keys under HKEY_LOCAL_MACHINE\SOFTWARE\Fujitsu\Install\Interstage IDE
 - 1101
- Keys under HKEY_LOCAL_MACHINE\SOFTWARE\Microsoft\Windows\CurrentVersion\Uninstall
 - {4CDD0461-361A-4224-94F3-93CDC2A56794}

If another product with a specific function is installed, then the registry keys below will be shared.

Only delete if the registry keys below still exist after another product equipped with a specific function has been uninstalled.

- Keys under HKEY_LOCAL_MACHINE\SOFTWARE\Fujitsu
 - AHS
 - Apcoordinator
 - EventService
 - Extp
 - F3FMirep
 - F3FMisje6
 - F3FMisjee
 - F3FMisjmx
 - F3FMjs2su
 - F3FMpcmi
 - F3FSSMEE
 - FJapache

- FJFSVL
 - FjsvSvMon
 - Interstage JMS
 - Interstage Operation Tool
 - Interstage Single Sign-on
 - IREPSDK
 - MessageQueueDirector
 - ObjectDirector Portable-ORB
 - ObjectDirector Server
 - ObjectTransactionService
 - OD_Parent
 - SecurecryptoLibraryCommon
 - TransactionDirector
- Keys under HKEY_LOCAL_MACHINE\SOFTWARE\Fujitsu\Install
 - AHS
 - Apcoordinator
 - EJB_IOP
 - EventService
 - Extp
 - F3FMirep
 - F3FMisje6
 - F3FMisjee
 - F3FMisjmx
 - F3FMjs2su
 - F3FMjs5
 - F3FMjssrc
 - F3FMjssrs
 - F3FMpcmi
 - F3FMwsc
 - F3FSSMEE
 - FJapache
 - FJFSVL
 - FJSVj2ee
 - FJSVj2eer
 - FjsvSvMon
 - Interstage
 - Interstage JMS
 - Interstage Operation Tool
 - Interstage Single Sign-on
 - IREPSDK
 - MessageQueueDirector
 - ObjectDirector Portable-ORB
 - ObjectDirector Server
 - ObjectTransactionService
 - Securecrypto Library R
 - TransactionDirector
- Keys under HKEY_LOCAL_MACHINE\SOFTWARE\Microsoft\Windows\CurrentVersion\Uninstall
 - EJB_IOP
- Keys under HKEY_LOCAL_MACHINE\SYSTEM\CurrentControlSet\Services
 - F3FMjs2su
 - F3FMsvmond
 - F3FMsvmonobservd
 - FJapache
 - FujitsuEnabler
 - InterfaceRep_Cache_s

- InterfaceRep_e
- INTERSTAGE
- Interstage Java EE DAS
- Interstage Java EE Node Agent
- Interstage Message Queue Broker
- Interstage Message Queue Broker(ISJE6)
- Interstage Operation Tool
- Interstage PCMI(isje6)
- InterstageHTTPServer2.2
- InterstageOperationTool(FJapache)
- Naming
- ObjectTransactionService
- odloader
- TransactionDirector

If another product with Fujitsu Java is installed, then the registry keys below will be shared.

Only delete if the registry keys below still exist after another product equipped with Fujitsu Java has been uninstalled.

- Keys under HKEY_LOCAL_MACHINE\SOFTWARE\Fujitsu\Java
 - 0160
 - 0161
 - STD

Note

If "HKEY_LOCAL_MACHINE\SOFTWARE\Fujitsu\Java" does not contain any keys, then also delete the following:

- Keys under HKEY_LOCAL_MACHINE\SOFTWARE\Fujitsu
 - Java

- Keys under HKEY_LOCAL_MACHINE\SOFTWARE\Fujitsu\J Business Kit\3.0\Install
 - 1101

Note

If "HKEY_LOCAL_MACHINE\SOFTWARE\Fujitsu\J Business Kit\3.0\Install" does not contain any keys, then also delete the following:

- Keys under HKEY_LOCAL_MACHINE\SOFTWARE\Fujitsu
 - J Business Kit

3. Deleting Icons and Groups

Delete the following icon on the desktop:

- Interstage Studio V11.1

Delete the following folder to delete the corresponding icon and group from the Start menu:

- In Windows Vista, Windows 7, Windows 8, Windows Server 2008 and Windows Server 2012

"Interstage Studio V11.1" in
Windows installation drive name:\ProgramData\Microsoft\Windows\Start Menu\Programs

"Interstage Studio V11.1 (Information Collection)" in
Windows installation drive name:\ProgramData\Microsoft\Windows\Start Menu\Programs\FJQSS (Information Collection Tool)

- In Windows XP or Windows Server 2003

"Interstage Studio V11.1" in

Windows installation drive name:\Documents and Settings\All Users\Start Menu\Programs

"Interstage Studio V11.1 (Information Collection)" in

Windows installation drive name:\Documents and Settings\All Users\Start Menu\Programs\FJQSS (Information Collection Tool)

4. Deleting Environment Variables

Delete the environment variables defined by this product.

If other products equipped with the function below are installed, then these will be common environment variables. Therefore, only delete if the environment variables below still exist after another product equipped with each function below has been uninstalled.

- Environment variables common to products equipped with the Framework function:
 - UJI_HOME
- Environment variables common to products equipped with the application server function:
 - EXTPATH
 - IS_HOME
 - IS_J2EEAPF
 - OD_HOME
 - TD_HOME
- Environment variables common to products equipped with the Fujitsu Java:
 - JAVA_HOME



Information

Delete as follows any of the above environment variables that have been set:

- In Windows XP
Double-click [Performance and Maintenance] in the Control Panel. Next, click [System] and click the [Environment Variables] button on the Advanced tab. Select the corresponding variable from the list of system variables, and click the [Delete] button.
- In Windows Server 2003
Double-click [System] in the Control Panel. Click [Environment Variables] on the Advanced tab. Select the corresponding variable from the list of system variables, and click [Delete] button.
- In Windows Vista
Click [System and Maintenance] in the Control Panel. Next, click [System] and then click [Advanced system settings]. Click the [Environment Variables] button on the Advanced tab. Select the corresponding variable from the list of system variables, then click the [Delete] button.
- In Windows Server 2008
Click [System and Maintenance] in the Control Panel. Next, click [System] and then click [Change settings]. Click the [Environment Variables] button on the Advanced tab. Select the corresponding variable from the list of system variables, then click the [Delete] button.
- In Windows 7, Windows 8, Windows Server 2008 R2 or Windows Server 2012
Click [System and Security] in the Control Panel. Next, click [System] and then click [Change settings]. Click the [Environment Variables] button on the Advanced tab. Select the corresponding variable from the list of system variables, then click the [Delete] button.

5. Deleting Paths in the PATH Environment Variable

If the PATH environment variable contains the folder path below, delete it from the PATH.

If other products equipped with a specific function or Fujitsu Java are installed, then only delete if the following environment variable PATHs still exist after the products have been uninstalled.

- C:\Interstage\APS
- C:\Interstage\IDE

6. Deleting Classpaths in the CLASSPATH Environment Variable

Delete these if the CLASSPATH environment folder contains the paths below.

If other products equipped with a specific function or Fujitsu Java are installed, then only delete if the following environment variable CLASSPATHs still exist after the products have been uninstalled.

- C:\Interstage\APS
- C:\Interstage\IDE

Additionally, "." might remain in CLASSPATH. Delete it them as required.

7. Deleting Folders

Delete the following folder in C:\Program Files\InstallShield Installation Information (where the System drive is C:):

- {4CDD0461-361A-4224-94F3-93CDC2A56794}

First save the various resources in the Java integrated development environment and the operation test environment, if required, and then delete the following folders created under the folder specified during installation (Example: C:\Interstage):

- IDE\1101
- IDE\1101_WB34
- IDE\1101_WB36
- IDE\jbpplgdi
- IDE\JDK6
- IDE\JDK7

The folder below might be a common one if it contains another product equipped with the application server function.

Only delete the folder below if it still exists after another product equipped with the application server function has been uninstalled.

- APS

The folder below might be a common one if it contains another product equipped with the Framework function.

Only delete the folder below if it still exists after another product equipped with the Framework function has been uninstalled.

- APC

Refer to "[3.1 Preparation for Uninstallation](#)" for information on the folder that stores user resources.

Refer to "[Deleting folders](#)" to delete folders if unnecessary folders remain.

8. Deleting files

Delete the following files in the C:\Program Files\Fujitsu\FJQSS\product folder. (if the C drive is the system drive):

- cnf_INTS-STDSJEG1_V11.1.0.txt

9. Deleting files under the Temp folder

Delete the following file under the folder specified by the environment variable TMP or TEMP:

- f5drinst_1101.log

10. Deleting software information from the [Uninstall (middleware)] management DB

When [All Programs] > [Fujitsu] > [Uninstall (middleware)] in the Start menu is started and the information for the uninstalled product is displayed, the information needs to be deleted from the management DB.

Execute the following command to delete the product information:

```
"C:\Program Files\Fujitsu\FujitsuF4CR\cir\bin\ciope.exe" metadb-remove-entry -i  
EA2DACE3012B10000000A7CCCB0ADC -v 1101 -f
```

11. Restarting the Computer

After completing all the above procedures, restart the computer.

Index

| | | |
|---|-----|------------|
| | [A] | |
| Add-on Components..... | | 44 |
| | [C] | |
| Component lists..... | | 2 |
| | [E] | |
| environment variable..... | | 4,9,26,35 |
| | [F] | |
| FJQSS (Information Collection Tool)..... | | 1 |
| Fujitsu XML Processor..... | | 44 |
| | [I] | |
| Installation Tasks..... | | 4 |
| Installation Types..... | | 2 |
| Interstage Management Service Operation Tool..... | | 34 |
| | [J] | |
| Java integrated development environment..... | | 1 |
| | [N] | |
| Notes..... | | 6,38 |
| | [O] | |
| Operation test environment..... | | 1 |
| | [R] | |
| Related Products..... | | 3 |
| | [S] | |
| Services for the application server..... | | 34 |
| | [T] | |
| Terminal Services..... | | 6,34,37,43 |
| | [U] | |
| Uninstall (middleware)..... | | 1,10 |
| Uninstallation Tasks..... | | 37 |