



Interstage Business Process Manager V11.2

A decorative horizontal band with a blue abstract background. It features a bright light source on the left that creates a lens flare effect, illuminating a series of glowing blue lines and dots that recede into the distance, creating a sense of depth and motion.

Server Administration Guide

J2U3-0057-06ENZ0(00)
January 2012

Publication Date	January 2012
Revision	6
Trademarks	<p>Interstage is a trademark of Fujitsu Limited.</p> <p>Microsoft, Windows, and Windows Server are registered trademarks of Microsoft Corporation in the United States and other countries.</p> <p>UNIX is a registered trademark of the Open Group in the United States and in other countries.</p> <p>Oracle and Java are registered trademarks of Oracle Corporation and its subsidiary and related companies in the United States and other countries.</p> <p>Linux is a registered trademark of Linus Torvalds in the USA and other countries.</p> <p>Red Hat, the Red Hat "Shadow Man" logo, RPM, Maximum RPM, the RPM logo, Linux Library, PowerTools, Linux Undercover, RHmember, RHmember More, Rough Cuts, Rawhide and all Red Hat-based trademarks and logos are trademarks or registered trademarks of Red Hat, Inc. in the United States and other countries.</p> <p>All other trademarks and trade names mentioned have been registered by their respective manufacturer.</p>

All Rights Reserved,
Copyright © FUJITSU
LIMITED 2005-2012

All rights reserved, including those of translation into other languages. No part of this manual may be reproduced in any form whatsoever by means of photocopying, microfilming or any other process without the written permission of Fujitsu Limited.

High Risk Activity

The Customer acknowledges and agrees that the Product is designed, developed and manufactured as contemplated for general use, including without limitation, general office use, personal use, household use, and ordinary industrial use, but is not designed, developed and manufactured as contemplated for use accompanying fatal risks or dangers that, unless extremely high safety is secured, could lead directly to death, personal injury, severe physical damage or other loss (hereinafter "High Safety Required Use"), including without limitation, nuclear reaction control in nuclear facility, aircraft flight control, air traffic control, mass transport control, medical life support system, missile launch control in weapon system. The Customer shall not use the Product without securing the sufficient safety required for the High Safety Required Use. In addition, Fujitsu (or other affiliate's name) shall not be liable against the Customer and/or any third party for any claims or damages arising in connection with the High Safety Required Use of the Product.

Table of Contents

	About this Manual.....	9
1	Architecture Overview.....	12
1.1	Configuration Overview.....	12
1.2	System Architecture.....	13
1.2.1	Interstage BPM Server Tier.....	14
1.2.2	Interstage BPM Web and Client Tier.....	16
1.3	Interstage BPM Analytics Integration.....	16
1.4	CentraSite Integration.....	17
1.5	Interstage BPM as a Service (SaaS).....	18
2	Stopping and Starting Interstage BPM Server.....	20
2.1	Stopping and Starting Interstage BPM for Interstage Application Server.....	20
2.1.1	Stopping Interstage BPM for Interstage Application Server.....	20
2.1.2	Starting Interstage BPM for Interstage Application Server.....	20
2.2	Stopping and Starting Interstage BPM for WebLogic.....	20
2.2.1	Stopping Interstage BPM for WebLogic.....	20
2.2.2	Starting Interstage BPM for WebLogic.....	22
2.3	Stopping and Starting Interstage BPM for WebSphere.....	23
2.3.1	Stopping Interstage BPM for WebSphere.....	24
2.3.2	Starting Interstage BPM for WebSphere.....	24
2.4	Stopping and Starting Interstage BPM for JBoss.....	25
2.4.1	Stopping Interstage BPM for JBoss.....	25
2.4.2	Starting Interstage BPM for JBoss.....	26
3	Configuring Interstage BPM Server.....	28
3.1	Configuring the Email Listener.....	28
3.2	Changing Parameter Values Using Tenant Management Console.....	28
3.3	Using the Configuration Export and Import Scripts.....	29
3.4	Changing the Database and Directory Service Configuration.....	32
3.5	Configuring the Document Management System (DMS).....	34
3.6	Configuring Interstage BPM for Interstage Analytics.....	36

3.7	Integrating Interstage BPM with Other Servers.....	36
3.7.1	Integration of Interstage BPM to Interstage BPM.....	37
3.7.2	Setting a Different Interstage BPM Linkage User.....	38
3.8	Configuring Business Calendars.....	38
3.8.1	Business Calendar Format.....	39
3.8.2	Shift Example.....	41
3.9	Dynamically Reloadable Properties.....	41
3.10	Changing Tenant Resource Permissions.....	42
4	System Configuration Parameters of the Interstage BPM Server.....	44
4.1	AllowNonDMSFileAttachmentsInEmailAction.....	44
4.2	AnalyticIntegrationSuspendHours.....	44
4.3	AnalyticsLogFile.....	45
4.4	ApplicationSecurityMode.....	45
4.5	ClusterAutomateFailoverEnabled.....	45
4.6	ClusterHeartbeatInterval.....	46
4.7	ClusterInterceptEvents.....	46
4.8	ClusterMulticastPort.....	46
4.9	ClusterMulticastTopic.....	46
4.10	DBDataSource.....	47
4.11	DBSQLQueryTimeOut.....	47
4.12	DebugLevel.....	47
4.13	EncryptionKey.....	47
4.14	JMSNamingProvider.....	47
4.15	JMSNamingProviderURL.<Hostname>.....	48
4.16	JSExtCmdsClasses.....	48
4.17	JSExtCmdsFile.<Hostname>.....	48
4.18	KPIListenerConfigFile.<Hostname>.....	49
4.19	LogFileRecycleNumber.....	49

4.20	LogFileRecycleSize.....	49
4.21	ObjectCacheEnabled.....	50
4.22	ProactiveNotificationEnabled.....	50
4.23	ProactiveSQNotificationEnabled	50
4.24	ServerBaseURL.....	50
4.25	ServerEmailBaseURL.....	51
4.26	ServerGNEmailCustomizerClass.....	51
4.27	ServerHost.<Hostname>.....	51
4.28	ServerLogFile.....	52
4.29	ServerLogFileRecycle.....	52
4.30	ServerMaxUnhandledEvents.....	52
4.31	ServerName.....	53
4.32	ServerRoot.<Hostname>.....	53
4.33	ServerSharedRoot.<Hostname>.....	53
4.34	SMTPPassword.....	53
4.35	SMTPServerHost.....	53
4.36	SMTPServerPort.....	54
4.37	SMTPUserName.....	54
4.38	SupportGroupWorkItem.....	54
4.39	WSHttpProxyHost.....	54
4.40	WSHttpProxyPort.....	55
4.41	Static Parameters.....	55
5	Properties of Interstage BPM Server Tenants.....	57
5.1	AdminRole.....	57
5.2	AnalyticsLogFile.....	57
5.3	DDFrameWorkImplClass.....	58
5.4	DebugLevel.....	58
5.5	DirectoryImplClass.....	58

5.6	DirectoryService.....	58
5.7	DMSFileSeparator.....	58
5.8	EmailListenerAutoReplyEnabled.....	58
5.9	EmailListenerDeleteInvalidMessages.....	59
5.10	EmailListenerEmailAddress.....	59
5.11	EmailListenerEnabled.....	59
5.12	EmailListenerPassword.....	59
5.13	EmailListenerPollingInterval.....	59
5.14	EmailListenerPOPPort.....	59
5.15	EmailListenerPropertiesFile.....	59
5.16	EmailListenerServerHost.....	60
5.17	EmailListenerUserName.....	60
5.18	EmailNotificationEnabled.....	60
5.19	EmailStyleSheetFile.....	60
5.20	IBPMUserStoreActive.....	60
5.21	LDAPAccessUserID.....	61
5.22	LDAPAccessUserPassword.....	61
5.23	LDAPContextFactory.....	61
5.24	LDAPDBSuffix.....	61
5.25	LDAPFilter.....	62
5.26	LDAPGroupCacheAgeSec.....	62
5.27	LDAPGroups.....	62
5.28	LDAPGroupsDN.....	62
5.29	LDAPPeople.....	62
5.30	LDAPServer.....	63
5.31	LDAPuid.....	63
5.32	LDAPUseDefUsersGroups.....	63
5.33	LDAPUsersDN.....	63

5.34	LogFileRecycleNumber.....	63
5.35	LogFileRecycleSize.....	64
5.36	ManagerAttribute.....	64
5.37	MetadataRepositoryPassword.....	64
5.38	MetadataRepositoryURL.....	64
5.39	MetadataRepositoryUserName.....	64
5.40	RequiredUserAttribute.....	65
5.41	SecuritySwitch.....	66
5.42	SendAnalyticEvents.....	67
5.43	ServerEmailAddress.....	67
5.44	ServerEmailClientPage.....	67
5.45	ServerLogFile.....	67
5.46	ServerLogFileRecycle.....	68
5.47	ServerNotificationUserProfileField.....	68
5.48	ServerPassword.....	68
5.49	ServerReassignMode.....	68
5.50	ServerUserName.....	68
5.51	SWAPLinkagePassword.....	69
5.52	SWAPLinkageUserName.....	69
5.53	TeamAttribute.....	69
5.54	TemplatePublishers.....	69
5.55	UDDIBusinessName.....	70
5.56	UDDIInquiryURL.....	70
5.57	UDDIPublisherPassword.....	70
5.58	UDDIPublisherUserName.....	70
5.59	UDDIPublishURL.....	71
5.60	WebDAVKeyStore.....	71
5.61	WIResponsible.....	71

6	Making a Backup of Your Data.....	72
6.1	Configuration Files.....	72
6.2	Log Files.....	72
6.3	DMS Directory.....	72
6.4	Database.....	73
	Appendix A Database Schema.....	74
	Appendix B Troubleshooting.....	107
B.1	Log File Information.....	107
B.2	Resolving Specific Error Situations.....	107
B.2.1	Interstage BPM Server Fails to Start.....	107
B.2.2	Error in IBPMServer.log.....	108
B.2.3	Timeout During JavaScript Execution.....	109
B.2.4	Failure in Writing to an Oracle Database.....	109
B.2.5	Warning or Error Messages for Interstage Application Server.....	109
B.3	Errors During Installation, Deployment and Configuration.....	110
B.4	Errors during Starting the Interstage BPM Server	112
B.5	Contacting Your Local Fujitsu Support Organization.....	114
	Glossary	116
	Index	121

About this Manual

This manual describes how to configure and administrate Interstage Business Process Manager (Interstage BPM) Server.

Intended Audience

This manual is intended for Interstage BPM Super Users, who are administrators managing Interstage BPM Server. It assumes that the reader has a working knowledge of the following:

- Operating system administration
- Database administration

This Manual Contains

Here is a list of what is in this manual:

Chapter	Title	Description
1	Architecture Overview	Introduction to Interstage BPM, and description of the system components and their interaction.
2	Stopping and Starting Interstage BPM Server	Instructions for starting and stopping the Interstage BPM Server.
3	Configuring Interstage BPM Server	Description of how to change the configuration of the Interstage BPM Server.
4	System Configuration Parameters of the Interstage BPM Server	Description of the server parameters.
5	Properties of Interstage BPM Server Tenants	Description of the tenant-specific parameters.
6	Making a Backup of Your Data	Description of the data, which are to be stored.
Appendix A	Database Schema	Description of the database schema of Interstage BPM.
Appendix B	Troubleshooting	Description of the Interstage BPM log files and specific error situations and troubleshooting information.
	Glossary	Glossary of terms.

Typographical Conventions

The following conventions are used throughout this manual:

Example	Meaning
command	Text, which you are required to type at a command line, is identified by <code>Courier</code> font.
screen text	Text, which is visible in the user interface, is bold .
<i>Reference</i>	Reference material is in <i>italics</i> .
Parameter	A command parameter is identified by <code>Courier</code> font.

Other References

The following references for Interstage Business Process Manager are also available:

- *Release Notes*
Contains an overview of Interstage Business Process Manager, installation tips, and late-breaking information that could not make it into the manuals.
- *Interstage Business Process Manager Server and Console Installation Guide*
Describes software and hardware requirements, installation procedure for Interstage Business Process Manager Server and Console
- *Interstage Business Process Manager Developer's Guide*
Describes how to use the Interstage Business Process Manager API to customize and extend Interstage BPM to fit the unique needs of your organization.
- *Interstage Business Process Manager Studio User's Guide*
Explains how to model processes using the Interstage Business Process Manager Studio.
- *Interstage Business Process Manager Tenant Management Console Online Help*
Explains how to use the Interstage Business Process Manager Tenant Management Console user interface.
- *Interstage Business Process Manager Console Online Help*
Explains how to use the Interstage Business Process Manager Console user interface.
- *API Javadoc*
This HTML documentation provides the API and syntax of the packages, interfaces and classes for developing custom applications or embedding Interstage Business Process Manager into other products.

Abbreviations

The products described in this manual are abbreviated as follows:

- "BEA WebLogic Server", "Oracle WebLogic Server" are abbreviated as "WebLogic".
- "Interstage Business Process Manager" is abbreviated as "Interstage BPM".
- "Microsoft® Windows Server® 2003" is abbreviated as "Windows Server® 2003".
- "Oracle Solaris" might be described as "Solaris", "Solaris Operating System", and "Solaris OS" in this document.
- "Microsoft® SQL Server 2005 Standard Edition", and "Microsoft® SQL Server 2005 Enterprise Edition" are abbreviated as "Microsoft® SQL Server", "Microsoft SQL Server", or "SQL Server".

- "Oracle 10g R2 Standard Edition", "Oracle 10g R2 Standard Edition One", "Oracle 10g R2 Enterprise Edition", "Oracle 11g Standard Edition", "Oracle 11g Standard Edition One", "Oracle 11g Enterprise Edition" are abbreviated as "Oracle".
- "WebSphere Application Server" is abbreviated as "WebSphere".
- "JBoss Enterprise Application Platform" is abbreviated as "JBoss EAP".

1 Architecture Overview

Interstage Business Process Manager (Interstage BPM) is a server-based workflow engine with APIs (Application Programming Interfaces) for workflow application development. It empowers developers or systems engineers to embed a workflow engine into their own products or systems which implement Interstage BPM.

Some key features of Interstage BPM include:

- API, which allows customized applications to communicate with the workflow engine or existing products to be workflow-enabled.
- Enterprise-wide, scalable infrastructure for handling processes of all types
- Organizable and filterable universal to-do list
- Central location for documents relevant to a process

Interstage BPM can run on multiple application servers providing load balancing and failover capabilities for non-stop operation with 100% reliability. Therefore, Interstage BPM is ideally suited for large mission critical applications deployed on the leading J2EE-compliant application servers. Refer to section *System Architecture* on page 13 for more information.

Interstage BPM can be used together with the following integration components:

- **Interstage BPM Analytics:** The Interstage BPM server can provide business process monitoring data to the Interstage BPM Analytics engine. Using Interstage BPM Analytics, this data can be evaluated and processed. Refer to section *Interstage BPM Analytics Integration* on page 16 for more information.
- **CentraSite Integration:** CentraSite provides storage infrastructure for Web Services registries, Meta model repositories, as well as data necessary for auditing, access security and versioning. Refer to section *CentraSite Integration* on page 17 for more information. In fact, Interstage BPM can be used together with any UDDI- and WebDAV-compliant repository.

1.1 Configuration Overview

Interstage BPM can be run in the following configuration:

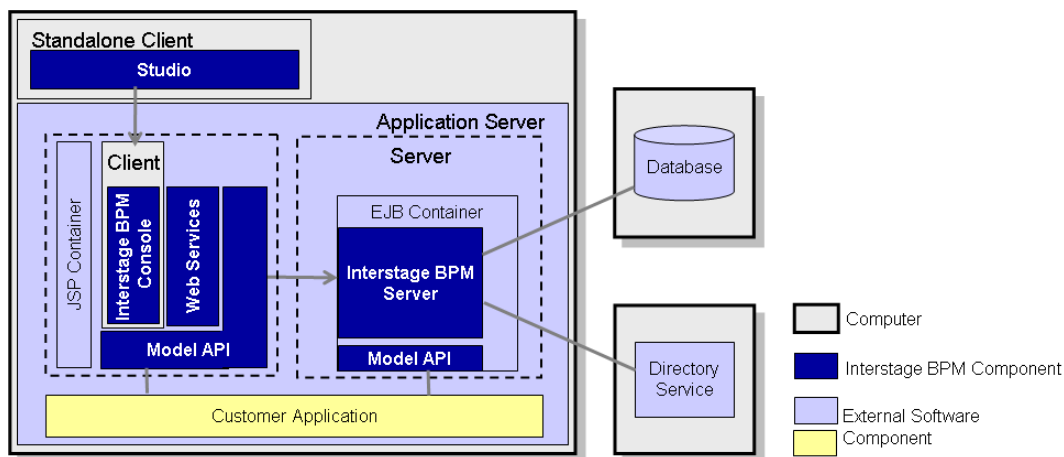


Figure 1: Configuration Overview

The Interstage BPM Server operates with a Database and optionally a Directory Service. The Interstage BPM Clients are used to access the Interstage BPM Server.

You can install the components that make up a complete Interstage BPM installation in various configurations:

- All systems are installed one and the same computer
- One or several of the following is installed on separate computers:
 - Interstage BPM Server
 - Database
 - Directory Service
 - Interstage BPM Console
 - Studio

Refer to the *Interstage Business Process Manager Server and Console Installation Guide* for details.

Note: Model API must refer the NamingService of Interstage BPM Server. Therefore, if the customer application is referring its own NamingService that is available on another machine, it is necessary to integrate that NamingService with the NamingService of Interstage BPM Server. The NamingService of the customer application cannot independently refer the NamingService of Interstage BPM Server.

1.2 System Architecture

Interstage BPM basically consists of a Server and a Model API. Several connectivity options allow for the integration of third party tools and other systems. This section provides an overview of the Interstage BPM components and their interaction.

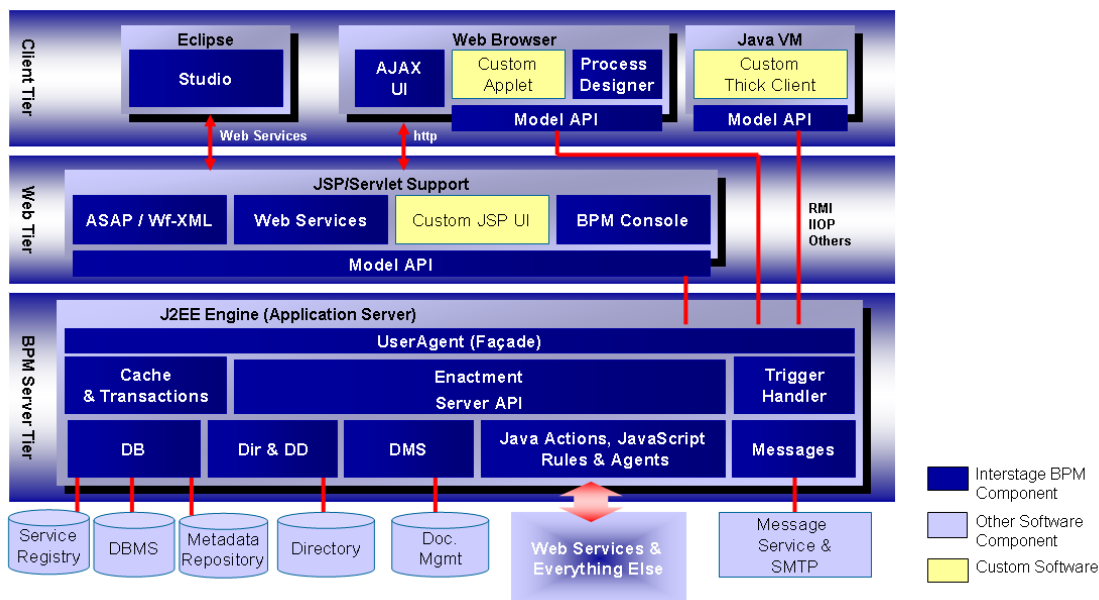


Figure 2: Architecture Overview

1.2.1 Interstage BPM Server Tier

The Interstage BPM Server is running inside an application server providing an Enterprise Java Bean (EJB) interface. The server negotiates interaction between users and other components, enacts processes started by users, and notifies users of changes in status within a process. Interstage BPM can be configured using the standard capabilities of the application server. The only way to the server is through a client developed using the Model API.

Interstage BPM is deployed into a standard application server that isolates the application from operating system and database differences. Interstage BPM utilizes the facilities of the application server to provide, for example, for clustering, load balancing and failover capabilities.

The server is composed as a collection of EJBs that run in an application server, and make use of application server functionality. The Interstage BPM EJBs participate in container transactions so that the server and any client application can participate in the same transactions. Container-based transactions ensure a consistent state of the server.

The subsequent sections describe the EJBs in more detail.

User Agent (Façade)

The User Agent EJB (UA bean) enables the client to “log in” to the Interstage BPM system and validates the client for further interaction with Interstage BPM. First, the client requests a UA bean to be created; next the server creates the UA bean and returns a handle to it to the client. Then the client provides user name, password and server name for login to the server; this information is validated either through Interstage BPM's local user management capabilities or using the functionality of a connected Directory Service.

A UserAgent instance represents the login session to the server. It holds information for that particular login session. As the client's agent, the UserAgent makes bean requests and method calls to the other Interstage BPM components on behalf of its client, i.e. it acts as a gateway for the model to access the process definition, process instance, work item, directory, and other objects. Therefore, the UA bean is also referred to as **Façade**, representing the interface between the server and the model.

Another function of the UA bean is to interpret the various filters on process definition, process instance and work item objects. Upon a client's option to log out, the UserAgent will do all the necessary cleanup of resources held on behalf of the associated client. In addition, the UA bean implements session synchronization.

The server requests a unique instance of the UA bean for each client that logs into Interstage BPM. It requests these instances from the EJB container that is part of the application server. In a manner of speaking, the Server bean is a factory that “produces” instances of UA beans.

Enactment Engine - Process Definition Interpreter

The Process Definition Interpreter is the heart of the Interstage BPM Server. It is responsible for enacting a process defined with Interstage BPM. The server communicates with the Database adapter to maintain process state data, process instance and activity-related data, and process history information. The server controls database request queues.

There are two types of entity beans representing data objects holding the information about process definitions and instances. Upon enactment of a process, a Process Definition EJB is created, which in turn creates Process Instance beans. Both beans implement the application server functionality of Bean-Managed-Persistence and Container Transactions.

They are not exposed to the model. All requests to the model pass through the UA bean(s).

Process data, e.g. information about the current state, is stored in and, on request, retrieved from the database. The server communicates with the database to maintain process state data, process and activity-relevant data.

Messaging

A combination of message-driven beans (MDBs) and a Java class library implement the Interstage BPM's type system (Meta model). Process enactment events are encapsulated in JMS messages that the MDBs process. Interstage BPM makes use of the default application server functionality.

In Interstage BPM, message-driven beans (MDBs) realize the flow of information between the server components by means of asynchronous messages.

For example, there are the following MDBs:

- Enactment Message bean: When a process instance is created, this bean generates a message so that the client is informed about this.
- Email Dispatcher bean: Handles email messages to the client
- Action Agent bean: handles Action Agents

Custom EJBs

Any application can implement EJBs that run on the same application server installation as the Interstage BPM Server. Custom EJBs use the Model API, and Interstage BPM EJBs can call custom EJBs using Java Actions.

User and Group Management

Every user that is to work with Interstage BPM needs a user account and must be assigned to one or more groups. Groups are used to determine who is responsible for carrying out a task in a process.

Interstage BPM comes with its own user and group management capabilities. Interstage BPM also allows for connecting to a Directory Service. Depending on your choices when deploying the server, users are managed either in Interstage BPM's local user store or in a Directory Service. Groups can be managed in Interstage BPM's local group store, in a Directory Service or in both systems.

Connectivity

The Interstage BPM architecture allows for the integration with third-party products. The server can communicate with the other components via "adapter classes". An adapter behaves as a converter that allows the server to speak to a common interface. Interstage BPM allows for connecting to the following:

- **Database (DB)** adapter using the JDBC standard. The server provides the communication mechanism between the server and a database server. The database persistently stores and maintains all process information. The DB Adapter is responsible for the translation of server internal objects into various persistent formats. Included with Interstage BPM is an adapter that persists the structures in a relational database using JDBC and some stored procedures.
- **Directory Service (Dir & DD)** adapter which implements an Interstage BPM specific interface to expand a user group into a list of individuals. The enactment engine uses this at runtime to determine who to give work items to. The Directory Adapter uses the LDAP standard. Currently, Microsoft® Active Directory and Oracle Directory Server Enterprise Edition is supported.
The DD Framework Adapter is used by the User Agent at login time to authenticate users.
- **DMS** adapter which is used to interface the Interstage BPM system to external file systems using standard copy and transfer protocols. Forms, attachments, process definitions, etc. can be stored

in a file system. A locator for such documents is stored in the attachments attributes of a process instance. Interstage BPM includes a DMS adapter that accessed documents stored on a file system or on a file store accessible via the WebDAV protocol. Access to other document management systems requires a custom DMS Adapter.

- **Messages** using the SMTP standard. Email can be sent from the server to the SMTP mail server as a response to Interstage BPM events.
- **External Systems:**
 - **Java Actions and JavaScript:** You can implement Java Actions for connecting to any external system, such as CRM or ERP systems. Java Actions are extensions to the workflow engine. Java Actions are data structures in the process definition that tell the Interstage BPM Server how to call a particular Java method during execution. These method calls customize process enactment and allow execution of Java business methods outside the scope of the Interstage BPM Server. Java Actions make application integration easier and calls to external applications and adapters faster.
 - **Agents:** Agents in Interstage BPM are set up to run automatically and act asynchronously on your behalf. You can use Agents to access external systems such as legacy systems or Web Services, both inside and outside of company firewalls. Using Agents, you can incorporate these external services into your Interstage BPM process instances. This mode of integrating Java is particularly convenient when multiple retries may be required.
 - **Rules:** The Rules Engine Bridge is a Java Action that is included in Interstage BPM in order to invoke rules engines like the iLog JRules Engine. Rules have all the same capabilities that are available from JavaScript, so you can think of the rules as a kind of scripting engine.

1.2.2 Interstage BPM Web and Client Tier

The **Model API** is an abstraction over the server and provides a single unified API to the server. The Model API runs in the client process, and handles all the communications to the server.

Interstage BPM comes with several client applications, for example, the Studio and the BPM Console. Except for the Studio, the clients run in a servlet engine and are accessed using a Web browser. They are comprised of a combination of Java User Interface classes. Such client components are structured in two layers: a model layer (using the Model API) and a user interface layer (using Java User Interface classes). The model layer encapsulates the state of the client objects and interacts with the server. With using the Model API, you can develop your own clients and user applications. The Studio is a standalone process design tool that can be installed separately. The Studio is independent of application server functionality. It interacts with the Interstage BPM Server through the Web tier.

Web Service capabilities is included in the web tier.

Interstage BPM supports a kind of Web Services Interface that is known as an Asynchronous Web Services Interface. This is an implementation of a standard way to access process instances and other long running programs. The standard is known as the Asynchronous Service Access Protocol (ASAP).

Refer to the *Interstage Business Process Manager Server and Console Installation Guide* for details on the Interstage BPM Web Services.

1.3 Interstage BPM Analytics Integration

Interstage BPM Analytics can be used for analyzing and evaluating the process data from the Interstage BPM Server. The Interstage BPM Deployment Tool allows for configuring whether Interstage

BPM generates events to Interstage BPM Database that can then be evaluated by Interstage BPM Analytics.

The following figure illustrates the interaction of the applications involved.

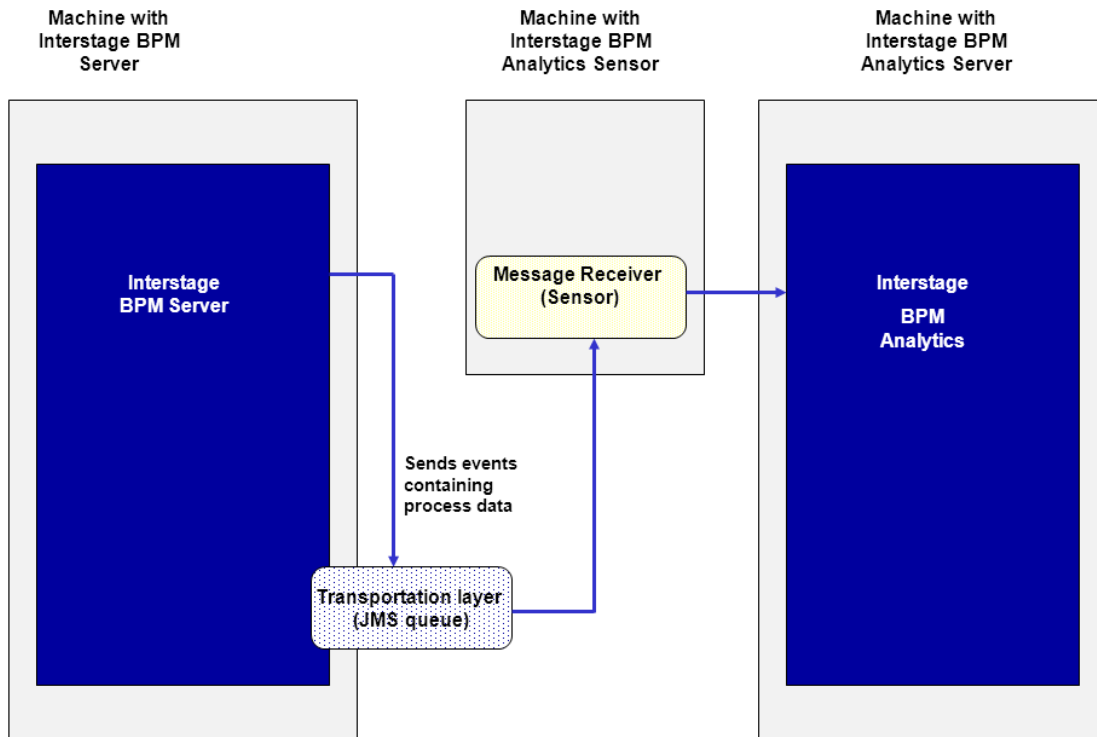


Figure 3: Interstage BPM Analytics Integration

The Interstage BPM Server, the Interstage BPM Analytics Sensor and the Interstage BPM Analytics Server can be installed on the same physical machine, or on different machines on the same network. Refer to the *Interstage Business Process Manager Server and Console Installation Guide* for information on how to configure the sending of events during deployment.

Refer to the *Interstage BPM Analytics documentation* for information on how to setup the Sensor and use Interstage BPM Analytics.

1.4 CentraSite Integration

CentraSite provides storage infrastructure for Web Services registries, Meta model repositories, as well as for data necessary for auditing, access security and versioning. In addition it provides a web-based interface to visualize reports that analyze the usage of Web Services in process instances (Interstage Business Process Manager), orchestrations (Software AG's crossvision Service Orchestrator) and information integration queries (Software AG's crossvision Information Integrator). As a result, business analysts, architects and developers can all collaborate, eliminate business risk related to change in IT assets and avoid the disruption of critical business processes.

From a functional point of view CentraSite manages metadata generated from integration software, Web Service descriptions, application specific data, and in general it serves as a central store for documents in native XML and non-XML formats.

You can use the following functionalities provided by CentraSite from Interstage BPM:

- UDDI registry
- WebDAV repository

UDDI is an industrial standard and serves the known registry functionality such as publicizing, discovering and staging consumption of Web Services. Publishing, discovering and retrieving Web Services capabilities provided by Interstage BPM is based on standard UDDI interfaces, and therefore you can use CentraSite from Interstage BPM as a UDDI registry implementation.

WebDAV is another industrial standard and can be used for storing and retrieving development artefacts, which are stored in standard formats such as XPD. Interstage BPM provides the capability of publishing metadata into WebDAV and therefore you can use CentraSite from Interstage BPM as a WebDAV repository implementation.

1.5 Interstage BPM as a Service (SaaS)

Interstage Business Process Manager offers the option of being used in SaaS (Software as a Service) mode. If you use Interstage BPM in SaaS mode, you can create multiple tenants and lease out Interstage BPM to these tenant organizations, who will use it as a service. Note the following:

- You can decide whether or not to use Interstage BPM in SaaS mode during Interstage BPM installation.
- An organization that leases out Interstage BPM to other organizations for use as a service is called a service provider.
- An organization that uses Interstage BPM as a service from the service provider will use Interstage BPM as a 'tenant'.
- A service provider user who administrates tenants is called a Super User. Functionality of a Super User is limited to only managing tenants through the Interstage BPM Tenant Management Console, and managing the Interstage BPM Server.
 - Information about installing and accessing Interstage BPM Tenant Management Console is included in the *Interstage BPM Server and Console Installation Guide*
 - Information about using the Interstage BPM Tenant Management Console is included in the Interstage BPM Tenant Management Console Online Help
 - Information about managing the Interstage BPM Server is included in the *Interstage BPM Administration Guide*
- The Super User role cannot use or administrate Interstage BPM workflows.
- For a Service Provider to be able to use Interstage BPM as a regular user, it is required to set up a default tenant for its own use during Interstage BPM installation. Setting up a default tenant also sets up the default `system` application.
- **Even if you use Interstage BPM in the non-SaaS mode:**
 - You will still need to set up a Super User during installation. The role of this Super User will be limited to managing Interstage BPM Server.
 - You will need to set up a default tenant during installation. You will use all Interstage BPM functionality as a default tenant. You will not be allowed to create more than one tenant.
- Irrespective of whether you use Interstage BPM in SaaS mode or not, any operation on a workflow element will always be in the specific context of an application. For example, before you create

a process definition or process instance, you need to choose an application. In SaaS mode, you must choose an application before operating on any element. In non-SaaS mode, selecting an application is optional.

2 Stopping and Starting Interstage BPM Server

This chapter describes how to start and stop the Interstage BPM Server. The procedure for starting and stopping the server depends on the application server that you are using.

2.1 Stopping and Starting Interstage BPM for Interstage Application Server

The following sections describe how to stop and start the Interstage BPM Server when using Interstage Application Server.

2.1.1 Stopping Interstage BPM for Interstage Application Server

Prerequisite: When you stop the Interstage BPM Server it automatically logs out from the database and the Directory Service. Make sure that all Interstage BPM Clients are logged out from the Interstage BPM Server before stopping it.

To stop the Interstage BPM Server:

1. Start the Interstage Management Console.
2. Go to **Interstage > Interstage Application Server > System > WorkUnit**.
3. Select the work unit of Interstage BPM, for example `Interstage_BPM` and click **Stop**.

2.1.2 Starting Interstage BPM for Interstage Application Server

Prerequisite: Make sure that the database server and the Directory Service are running before you start the Interstage BPM Server. If the database and/or Directory Service are on remote computers, start the appropriate services on each.

To start the Interstage BPM Server:

1. Start the Interstage Management Console.
2. Go to **Interstage > Interstage Application Server > System > WorkUnit**.
3. Select the work unit of Interstage BPM, for example `Interstage_BPM` and click **Start**.

If the server is not running, refer to section *Errors during Starting the Interstage BPM Server* on page 112.

2.2 Stopping and Starting Interstage BPM for WebLogic

The following sections describe how to stop and start the Interstage BPM Server when using WebLogic Application Server.

2.2.1 Stopping Interstage BPM for WebLogic

Prerequisite: When you stop the Interstage BPM Server it automatically logs out from the database and the Directory Server. Make sure that all Interstage BPM Clients are logged out from the Interstage BPM Server before stopping it.

The procedure for stopping Interstage BPM depends on whether you have a single server installation or a cluster installation.

- **To stop a single server:**

- a) Stop the Interstage BPM Server by running the shutdown script.

Operating System	Script
Windows	stopManagedWebLogic.cmd
UNIX	stopManagedWebLogic.sh

- b) If you need to stop the WebLogic Administration server, run the shutdown script provided by the application server:

Operating System	Script
Windows	stopWebLogic.cmd
UNIX	stopWebLogic.sh

All scripts above are in the following locations:

- WebLogic Application Server 9.2: <BEA_HOME>/user_projects/domains/<Domain Name>/bin
- WebLogic Application Server 10.3.2: <MW_HOME>/user_projects/domains/<Domain Name>/bin

- **To stop a cluster:**

- a) Stop the Interstage BPM Server by running the shutdown script located in <Interstage BPM Server Installation Directory>/server/deployment/WLS-Cluster:

Operating System	Script
Windows	StopiFlowServer_Managed.bat <WebLogic Administrator Name> <WebLogic Administrator Password>
UNIX	StopiFlowServer_Managed.sh <WebLogic Administrator Name> <WebLogic Administrator Password>

For <WebLogic Administrator Name> <WebLogic Administrator Password>, specify the user account of the administrator for the WebLogic Administration Server.

- b) If you need to stop the WebLogic Administration server, run the shutdown script located in <Interstage BPM Server Installation Directory>/server/deployment/WLS-Cluster:

Operating System	Script
Windows	stopWebLogic.bat
UNIX	stopWebLogic.sh

Alternatively, you can run the shutdown script provided by the application server in <BEA_HOME>/user_projects/domains/<Domain Name>/bin.

2.2.2 Starting Interstage BPM for WebLogic

Prerequisite: Make sure, that the database server and the Directory Server are running before you start the Interstage BPM Server. If the database and/or Directory Server are on remote computers, start the appropriate services on each.

The procedure for starting Interstage BPM depends on whether you have a single server installation or a cluster installation.

- **To start a single server:**

a) Start the WebLogic Administration Server by running the startup script located in:

- `<BEA_HOME>/user_projects/domains/<Domain Name>/bin` on WebLogic Application Server 9.2.
- `<MW_HOME>/user_projects/domains/<Domain Name>/bin` on WebLogic Application Server 10.3.2

Operating System	Script
Windows	<code>startWebLogic.cmd</code>
UNIX	<code>startWebLogic.sh</code>

On Windows:

- For WebLogic 9.2, you can also start the server by selecting **Start > Programs > BEA Products > User Projects > <Domain Name> > Start Admin Server for WebLogic Server Domain**.
- For WebLogic 10.3.2, you can also start the server by selecting **Start > Programs > Oracle WebLogic > User Projects > <Domain Name> > Start Admin Server for WebLogic Server Domain**.

Upon successful initialization of the WebLogic Administration Server, the following message appears near the end of the WebLogic Console Window:

```
<Server started in RUNNING mode>
```

b) Start the Interstage BPM Server by running the startup script located in:

- `<BEA_HOME>/user_projects/domains/<Domain Name>/bin` on WebLogic Application Server 9.2.
- `<MW_HOME>/user_projects/domains/<Domain Name>/bin` on WebLogic Application Server 10.3.2

Operating System	Script
Windows	<code>startManagedWebLogic.cmd <Server Name></code> Example: <code>startManagedWebLogic.cmd IBPMServer</code>
UNIX	<code>startManagedWebLogic.sh <Server Name></code> Example: <code>startManagedWebLogic.sh IBPMServer</code>

For `<Server Name>`, specify the name that you defined when deploying the Interstage BPM Server.

- c) When asked by the startup script, enter the name and password of the administrator for the WebLogic Administration Server.

Upon successful initialization of the Interstage BPM Server, the following message appears near the end of the Console Window:

```
<Server started in RUNNING mode>
```

- **To start a cluster:**

- a) Start the WebLogic Administration Server by running the startup script located in <Interstage BPM Server Installation Directory>/server/deployment/WLS-Cluster:

Operating System	Script
Windows	startWebLogic.bat
UNIX	startWebLogic.sh

Alternatively, you can run the startup script provided by the application server in <BEA_HOME>/user_projects/domains/<Domain Name>/bin.

Upon successful initialization of the WebLogic Administration Server, the following message appears near the end of the WebLogic Console Window:

```
<Server started in RUNNING mode>
```

- b) Start the Interstage BPM Server by running the startup script located in <Interstage BPM Server Installation Directory>/server/deployment/WLS-Cluster:

Operating System	Script
Windows	iFlowServer_Managed.bat <WebLogic Administrator Name> <WebLogic Administrator Password>
UNIX	iFlowServer_Managed.sh <WebLogic Administrator Name> <WebLogic Administrator Password>

This ensures that required environment variables are set before actually starting the server.

For <WebLogic Administrator Name> <WebLogic Administrator Password>, specify the user account of the administrator for the WebLogic Administration Server.

You can start the cluster servers in any order.

If the server starts successfully, the following output is displayed:

```
...
<Joining cluster InterstageBPMCluster on ...>
...
<Server started in RUNNING mode>
```

If the server is not running, refer to section *Errors during Starting the Interstage BPM Server* on page 112.

2.3 Stopping and Starting Interstage BPM for WebSphere

The following sections describe how to stop and start the Interstage BPM Server when using WebSphere Application Server.

2.3.1 Stopping Interstage BPM for WebSphere

Prerequisite: When you stop the Interstage BPM Server it automatically logs out from the database and the Directory Server. Make sure that all Interstage BPM Clients are logged out from the Interstage BPM Server before stopping it.

You stop the Interstage BPM Server by stopping the WebSphere Application Server into which the Interstage BPM Server is deployed.

To stop the application server, do one of the following:

- Run the shutdown script.

Operating System	Script
Windows	stopServer.bat <Server Name> Example: stopServer.bat server1
UNIX	stopServer.sh <Server Name> Example: stopServer.sh server1

The script is located in <WebSphere Installation Directory>/AppServer/bin.

- On Windows, select the following menu path:

WebSphere Edition	Menu Path
WebSphere Application Server Base Edition	Start > Programs > IBM WebSphere > Application Server Base<version> > Profiles > AppSrv01 > Stop the server
WebSphere Application Server Network Deployment (ND) Edition	Start > Programs > IBM WebSphere > Application Server Network Deployment<version> > Profiles > AppSrv01 > Stop the server

Note: These instructions must be modified if you are using a WebSphere server other than the default server `server1`. Refer to the WebSphere documentation for details on this.

2.3.2 Starting Interstage BPM for WebSphere

Prerequisite: Make sure, that the database server and the Directory Server are running before you start the Interstage BPM Server. If the database and/or Directory Server are on remote computers, start the appropriate services on each.

You start the Interstage BPM Server by starting the WebSphere Application Server into which the Interstage BPM Server is deployed.

To start the application server:

- Do one of the following:
 - Run the startup script.

Operating System	Script
Windows	startServer.bat <Server Name> Example: startServer.bat server1

Operating System	Script
UNIX	startServer.sh <Server Name> Example: startServer.sh server1

The script is located in <WebSphere Installation Directory>/AppServer/bin.

- On Windows, select the following menu path:

WebSphere Edition	Menu Path
WebSphere Application Server Base Edition	Start > Programs > IBM WebSphere > Application Server Base<version> > Profiles > AppSrv01 > Start the server
WebSphere Application Server Network Deployment (ND) Edition	Start > Programs > IBM WebSphere > Application Server Network Deployment<version> > Profiles > AppSrv01 > Start the server

Note: These instructions must be modified if you are using a WebSphere server other than the default server `server1`. Refer to the WebSphere documentation for details on this.

2. To examine whether the Interstage BPM Server is running check the `IBPMServer.log` log file.

The log file is located in <Interstage BPM Server Installation Directory>/server/instance/default/logs.

If the server starts successfully, you will see a message similar to the following at the end of the file:

```
Interstage BPM Server <Server Name> ... is ready <Date>.
```

If the server is not running, refer to section *Errors during Starting the Interstage BPM Server* on page 112.

2.4 Stopping and Starting Interstage BPM for JBoss

The following sections describe how to stop and start the Interstage BPM Server when using JBoss Application Server.

2.4.1 Stopping Interstage BPM for JBoss

Prerequisite:

When you stop the Interstage BPM Server it automatically logs out from the database and the Directory Server. Make sure that all Interstage BPM Clients are logged out from the Interstage BPM Server before stopping it.

You stop the Interstage BPM Server by stopping the JBoss Application Server.

To stop the application server, do one of the following:

- Run the shutdown script. To do this:
 - a) Ensure the `JAVA_HOME` system environment is set. Also ensure that JMX authentication is configured - for details on how to do this refer the appendix topic 'Configuring JBoss Application Server Secure Access' in the *Interstage BPM Server and Console Installation Guide (JBoss Application Server)*.

- b) Run the shutdown script located in the <JBoss Installation Directory>/bin directory as follows:

Operating System	Script
Windows	shutdown.bat -S -s <Server Name>:<port> -u <user id> -p <password> Example: shutdown.bat -S -s localhost:1099 -u admin -p admin
UNIX	shutdown.sh -S -s <Server Name>:<port> -u <user id> -p <password> Example: shutdown.sh -S -s localhost:1099 -u admin -p admin

- Display the Command Prompt window in which the JBoss Application Server is running. Press <Ctrl>-C and wait for the server to stop.

Note: Do not stop the JBoss Application Server by closing the Command Prompt window in which the server is running.
Some components may not stop properly and you may not be able to start the JBoss Application Server again.

2.4.2 Starting Interstage BPM for JBoss

Prerequisite: Make sure, that the database server and the Directory Server are running before you start the Interstage BPM Server. If the database and/or Directory Server are on remote computers, start the appropriate services on each.

You start the Interstage BPM Server by starting the JBoss Application Server.

To start the application server, do one of the following:

- Run the appropriate startup script.
 - For JBoss 4.0.5:

Operating System	Script
Windows	runIBPM.bat
UNIX	runIBPM.sh

- For JBoss EAP 5.0:

Operating System	Script
Windows	runIBPM.bat -b 0.0.0.0
UNIX	runIBPM.sh -b 0.0.0.0

For more details, refer to the JBoss Application Server Documentation.

The script is located in the <JBoss Installation Directory>/bin directory.

Upon successful initialization of the server, the following message appears near the end of the Interstage BPM Managed Server Console window:

Interstage BPM Server <Server Name> ... is ready <Date>.

If the server is not running, refer to section *Errors during Starting the Interstage BPM Server* on page 112.

3 Configuring Interstage BPM Server

This chapter provides instructions for changing the configuration of Interstage BPM Server.

The configuration parameters of the Interstage BPM Server define its operating environment. They define the server's operation modes, map the locations of error logs, command scripts, and configuration files and store connection information for external systems like a Directory Service or a Metadata Repository.

The server's configuration parameters are stored in the Interstage BPM database. Interstage BPM comes with configuration export and import scripts. The Tenant Management Console allows you to change parameter values. Refer *Changing Parameter Values Using Tenant Management Console* on page 28 for more information. When you, for the first time, add a parameter to the configuration which is not set to the Interstage BPM Server, it is necessary to use configuration export and import script. Refer *Using the Configuration Export and Import Scripts* on page 29 for information about using configuration export and import scripts.

Note: If you have installed Interstage BPM in Software as a Service (SaaS) Mode, you can use the Interstage BPM Tenant Management Console to change these parameters. For instructions on accessing the Tenant Management Console, refer the *Interstage BPM Server and Console Installation Guide*.

3.1 Configuring the Email Listener

You must configure the Email Listener to use Interstage BPM Email Integration. Use these instructions to configure your Email Listener if you want the ability to complete tasks using your Email Client (Microsoft Outlook for example).

To configure your Email Listener, update the following Interstage BPM Properties according to the instructions found in the following sections of this chapter and the descriptions for these parameters that can be found in the chapter of this guide entitled *Properties of Interstage BPM Server Tenants*:

- EmailListenerAutoReplyEnabled
- EmailListenerDeleteInvalidMessages
- EmailListenerEmailAddress
- EmailListenerEnabled
- EmailListenerPassword
- EmailListenerPollingInterval
- EmailListenerPOPPort
- EmailListenerPropertiesFile
- EmailListenerServerHost
- EmailListenerUserName
- EmailStyleSheetFile

3.2 Changing Parameter Values Using Tenant Management Console

Prerequisite: The Interstage BPM Console and the Interstage BPM Server are running.

Tenant Management Console allows you to change System parameter values while the server is running. Any changes made using the Tenant Management Console will take effect immediately.

Note: You can change both, System parameter values and Tenant parameter values using the Tenant Management Console.

- For information about System parameters, refer *System Configuration Parameters of the Interstage BPM Server* on page 44.
- For information about Tenant parameters, refer *Properties of Interstage BPM Server Tenants* on page 57.

Note: If you do not have Interstage BPM Console deployed on your local system, use the export and import configuration scripts to edit the parameter values. Refer *Using the Configuration Export and Import Scripts* on page 29 for more information about using export and import configuration scripts.

Note: Before you make any changes to the Server configuration, export a copy of the server configuration file as a back-up. In case you make errors while editing parameters, Interstage BPM Server may not be able to start or errors may occur at runtime. In such a case you can import the back-up file which contains a working configuration. For information about using export and import configuration scripts, refer *Using the Configuration Export and Import Scripts* on page 29.

To change System parameter values using the Tenant Management Console:

1. Access the Tenant Management Console using the following URL:

`http://<Hostname>:<Port>/console/TenantManager.page`

On JBoss and WebLogic Application Servers, use port number 49950.

On Interstage Application Server (IAS), use port number 80.

On WebSphere Application Server, use port number 9080.

2. Log in as a Super User.
3. Click the **System Properties** button.
System Properties pop-up is displayed.
4. Edit the required parameter values.

Note: Parameter values are case sensitive.
Be careful when changing parameter values. If you specify invalid values, the Interstage BPM Server may not be able to start or errors may occur at runtime.

5. Click **Save**.
6. In a clustered or load-balanced system, each server node must be configured individually. Therefore, repeat steps 1-5 for the other server nodes.

3.3 Using the Configuration Export and Import Scripts

Prerequisite: The database server is running.

Interstage BPM comes with configuration export and import scripts that allow you to change the server configuration. You can use these scripts to add parameters that are not present in the configuration or remove parameters from the configuration. If the server fails to start or denies login due to configuration errors, you can use the scripts to import a working configuration into the database. You can add or edit both System as well as Tenant properties using the export and import scripts.

The Interstage BPM Server is not required to be running for the configuration export and import scripts to be used.

To use the configuration export and import scripts:

1. Export the server configuration by running the export script located in <Interstage BPM Server Installation Directory>/server/deployment/bin:

Operating System	Configuration Export Script
Windows	<ul style="list-style-type: none"> • For System Properties: <code>exportProperties.bat <File Name> <Database User Name> <Password></code> Example: <code>exportProperties.bat MyServerConfiguration.properties SomeUserName SomePassword</code> • For Tenant Properties: <code>exportProperties.bat <File Name> <Database User Name> <Password> <TenantName></code> Example: <code>exportProperties.bat MyServerConfiguration.properties SomeUserName SomePassword Default</code> Note that <TenantName> is case-sensitive
UNIX	<ul style="list-style-type: none"> • For System Properties: <code>exportProperties.sh <File Name> <Database User Name> <Password></code> Example: <code>exportProperties.sh MyServerConfiguration.properties SomeUserName SomePassword</code> • For Tenant Properties: <code>exportProperties.sh <File Name> <Database User Name> <Password> <TenantName></code> Example: <code>exportProperties.sh MyServerConfiguration.properties SomeUserName SomePassword Default</code> Note that <TenantName> is case-sensitive

For <File Name>, specify the file name and, optionally, the path of the configuration file to be generated. If you do not specify a path, the configuration file is written to the current directory.

For <Database User Name> and <Password>, specify the database user account that you defined during deployment of the Interstage BPM Server.

Note: Before you make any changes to the configuration file, create a copy of the configuration file you exported as a back-up. In case you make errors while editing parameters and import the file, Interstage BPM Server may not be able to start or errors may occur at runtime. In such a case you can use the back-up file which contains a working configuration.

2. Make the required changes in the generated configuration file.

If you want to add parameters, use the following syntax:

```
<Parameter Name>=<Parameter Value>
```

<p>Note:</p> <ul style="list-style-type: none">• Parameter names and values are case sensitive.• Any backslashes "\" or colons ":" used in parameter values must be escaped by backslashes. For example, a server address is specified like this: <pre>ibpmhost\:49950</pre>• Some configuration parameters have a <Hostname> or <Hostname>.<Servername> suffix appended to their names. These suffixes are automatically removed during the export and are automatically appended during the import. Do not add these suffixes to the parameter names.
--

Passwords in the generated configuration file are encrypted for security reasons. If you change a password, you are recommended to encrypt it before importing the configuration file. Passwords are not automatically encrypted during the import. For details on how to encrypt passwords, refer to the *Interstage Business Process Manager Server and Console Installation Guide*.

3. Import the updated configuration file into the database by running the import script located in

```
<Interstage BPM Server Installation Directory>/server/deployment/bin:
```

Operating System	Configuration Import Script
Windows	<ul style="list-style-type: none"> • For System Properties: <pre>importProperties.bat <File Name> <Database User Name> <Password></pre> <p>Example:</p> <pre>importProperties.bat MyServerConfiguration.properties SomeUserName SomePassword</pre> • For Tenant Properties: <pre>importProperties.bat <File Name> <Database User Name> <Password> <TenantName></pre> <p>Example:</p> <pre>importProperties.bat MyServerConfiguration.properties SomeUserName SomePassword Default</pre>
UNIX	<ul style="list-style-type: none"> • For System Properties: <pre>importProperties.sh <File Name> <Database User Name> <Password></pre> <p>Example:</p> <pre>importProperties.sh MyServerConfiguration.properties SomeUserName SomePassword</pre> • For Tenant Properties: <pre>importProperties.sh <File Name> <Database User Name> <Password> <TenantName></pre> <p>Example:</p> <pre>importProperties.sh MyServerConfiguration.properties SomeUserName SomePassword Default</pre>

For `<File Name>`, specify the file name and, if required, the path of the updated configuration file. You need to specify the path if the configuration file is not located in the current directory.

For `<Database User Name>` and `<Password>`, specify the database user account that you defined during deployment of the Interstage BPM Server.

4. In a clustered or load-balanced system, each server node must be configured individually. Therefore, repeat steps 1-3 for the other server nodes.
5. Restart the Interstage BPM Server for the changes to take effect.
For details, refer to chapter *Stopping and Starting Interstage BPM Server* on page 20.

3.4 Changing the Database and Directory Service Configuration

To make changes in your database or Directory Service configuration:

1. Export the server configuration so that you have a record of any customizations that you have made. To do so, run the export script located in `<Interstage BPM Server Installation Directory>/server/deployment/bin:`

Operating System	Configuration Export Script
Windows	<ul style="list-style-type: none"> • For System Properties: <pre>importProperties.bat <File Name> <Database User Name> <Password></pre> <p>Example:</p> <pre>importProperties.bat MyServerConfiguration.properties SomeUserName SomePassword</pre> • For Tenant Properties: <pre>importProperties.bat <File Name> <Database User Name> <Password> <TenantName></pre> <p>Example:</p> <pre>importProperties.bat MyServerConfiguration.properties SomeUserName SomePassword Default</pre> <p>Note that <TenantName> is case-sensitive</p>
UNIX	<ul style="list-style-type: none"> • For System Properties: <pre>importProperties.sh <File Name> <Database User Name> <Password></pre> <p>Example:</p> <pre>importProperties.sh MyServerConfiguration.properties SomeUserName SomePassword</pre> • For Tenant Properties: <pre>importProperties.sh <File Name> <Database User Name> <Password> <TenantName></pre> <p>Example:</p> <pre>importProperties.sh MyServerConfiguration.properties SomeUserName SomePassword Default</pre> <p>Note that <TenantName> is case-sensitive</p>

For <File Name>, specify the file name and, optionally, the path of the configuration file to be generated. If you do not specify a path, the configuration file is written to the current directory.

For <Database User Name> and <Password>, specify the database user account that you defined during deployment of the Interstage BPM Server.

2. Remove the Interstage BPM Server from the application server using the Interstage BPM Deployment Tool.
Refer to the *Interstage Business Process Manager Server and Console Installation Guide* for details.
3. Re-deploy the Interstage BPM Server using the new database or Directory Service configuration information.
Refer to the *Interstage Business Process Manager Server and Console Installation Guide* for details.

4. If required, reconfigure the Interstage BPM Server as explained in section *Changing Parameter Values Using Tenant Management Console* on page 28 and section *Using the Configuration Export and Import Scripts* on page 29.

3.5 Configuring the Document Management System (DMS)

The Document Management System (DMS) is used to store Workflow Applications, attachments to process instances and optionally other documents.

When you deploy the Interstage BPM Server, you specify one or more DMS root directories. You can add additional DMS root directories by modifying the `DmsCollections.xml` configuration file.

To add a DMS root directory:

1. Create a new directory in your DMS.
2. Edit the `DmsCollections.xml` configuration file. By default, the file is located in `<Interstage BPM Server Installation Directory>/server/instance/default/tenants/<tenant name>/resources`.
3. Add a new `<Dms>` section to the file:

```
<Dms>
  <Path> ... </Path>
  <ImplementationClass> ... </ImplementationClass>
  <Name> ... </Name>
</Dms>
```

This is the information that needs to be specified in the section's elements:

- `<Path>`: This is the **DMS Root** directory. Specify the full path of the directory in your DMS, for example the full path of a file system directory or the URL of a WebDAV directory.

Note: If you specify a file system directory, ensure this directory is specific to a tenant, and resides inside the `<Interstage BPM Installation Directory>/server/instance/default/tenants/<tenant name>` directory. Also note that the `<DMSRoot>` directory will contain all your workflow application projects under the `apps` folder.

Note:

- Make sure that you specify the path with a slash at the end to ensure proper handling of attachments in the Interstage BPM Console and Studio.
- If you are running Interstage BPM Server on Windows and you wish to specify a remote directory, use one of the following formats:


```
\\<Remote Computer Name>/<Directory Name>/
\\<Remote Computer Name>\<Directory Name>\
```

 Do not specify a network drive for example like in `P:\SomeRemoteDirectory`. Network drives cannot be accessed by the Interstage BPM Server.

- `<ImplementationClass>`: Specify the appropriate DMS adapter class. For a file system directory, specify `com.fujitsu.iflow.dmsadapter.impl.FileSystemDmsSessionImpl`. For a WebDAV directory, specify `com.fujitsu.iflow.dmsadapter.impl.WebDAVDmsSessionImpl`. If you are using a custom DMS adapter, specify the class name of that adapter.

Note: To use WebDAV directory as DMS, ensure that at least one File DMS directory (local path folder) is present as the first DMS path in `DmsCollections.xml`.

- <Name>: Define a unique symbolic name for the directory.

The symbolic name is optional, but highly recommended. If you define a symbolic name, the Interstage BPM Server uses that name instead of the directory's physical path. This is useful for sharing data between different Interstage BPM Servers and for clustered or load-balanced systems.

Say you want to set up a test server and a production server. Each server has its own DMS root directory, and the directories have different physical paths. If you are using the same symbolic name on both servers, you can transfer XPD files having external files attached to them between the servers without having to adjust the physical DMS root path.

In a clustered or load-balanced system, the DMS root directories are located on a central file server where they are accessed by all server nodes. The server nodes are allowed to map those directories to different physical paths as long as they use the same symbolic name for a directory. For details on how to set up the DMS for a clustered or load-balanced system, refer to the *Interstage Business Process Manager Server and Console Installation Guide*.

4. Restart the Interstage BPM Server.

For details, refer to chapter *Stopping and Starting Interstage BPM Server* on page 20.

This is an example of an entry for a file system directory on Windows:

```
<DmsCollections>
  <Dms>
    ...
  </Dms>
  <Dms>
    <Path>c:\Fujitsu\InterstageBPM\server\instance\default\tenants\MyTenant\AnotherDMSRoot</Path>

    <ImplementationClass>
      com.fujitsu.iflow.dmsadapter.impl.FileSystemDmsSessionImpl
    </ImplementationClass>
    <Name>AnotherDMSRoot</Name>
  </Dms>
</DmsCollections>
```

This is an example of an entry for a file system directory on UNIX:

```
<DmsCollections>
  <Dms>
    ...
  </Dms>
  <Dms>
    <Path>/opt/FJSVibpm/instance/default/tenants/MyTenant/AnotherDMSRoot</Path>

    <ImplementationClass>
      com.fujitsu.iflow.dmsadapter.impl.FileSystemDmsSessionImpl
    </ImplementationClass>
    <Name>AnotherDMSRoot</Name>
  </Dms>
</DmsCollections>
```

This is an example of an entry for a WebDAV directory:

```
<DmsCollections>
  <Dms>
    ...
  </Dms>
  <Dms>
    <Path>http://www.example.com/MyDMSRoot/</Path>
```

```

    <ImplementationClass>com.fujitsu.iflow.dmsadapter.impl.WebDAVDmsSessionImpl
    </ImplementationClass>
    <Name>AnotherDMSRoot</Name>
  </Dms>
</DmsCollections>

```

3.6 Configuring Interstage BPM for Interstage Analytics

Interstage Analytics can be used for analyzing and evaluating the process data from the Interstage BPM Server. If you want to use this feature, the Interstage BPM Server needs to be configured to send events to a JMS queue (transportation layer) that can then be evaluated by Interstage Analytics. You can enable the sending of events either when you deploy the Interstage BPM Server or later. This section explains how to enable the sending of events if you did not do so during deployment.

To configure Interstage BPM for Interstage Analytics:

- Set the following configuration parameter of Interstage BPM Server to `true`:

```
SendAnalyticEvents=true
```

For general instructions on how to change parameter values, refer to section *Changing Parameter Values Using Tenant Management Console* on page 28.

Interstage BPM Server is now configured for Interstage Analytics. Additional configuration steps must be performed to set up the Interstage Analytics Sensor. Refer to the *Interstage Analytics documentation* for more information.

3.7 Integrating Interstage BPM with Other Servers

You can integrate Interstage BPM Server with other servers. You can then start subprocesses running on one of the servers from parent processes running on another. The integrated servers communicate with each other using ASAP (Asynchronous Service Access Protocol) or SWAP (Simple Workflow Access Protocol).

Note: You are recommended to use ASAP when the processes run on integrated Interstage BPM Servers with other servers.

If you are integrating only remote Interstage BPM servers and are running them in a secure environment, integration involves configuring the Interstage BPM Server user.

To integrate remote Interstage BPM Servers that are running in a secure environment:

1. Make sure that all the Interstage BPM Servers that you want to integrate are using the same Interstage BPM Server User Name and Password.
For more information, refer to section *ServerUserName* on page 68.
2. Add the following parameters to the configuration of all the Interstage BPM Servers that you want to integrate:

```
SWAPLinkageUserName=ibpm_server1
```

```
SWAPLinkagePassword=<Password of ibpm_server1>
```

For instructions on how to add parameters, refer to section *Using the Configuration Export and Import Scripts* on page 29.

You can use the `TextEncrypter` utility to encrypt the password. Refer to the *Interstage Business Process Manager Server and Console Installation Guide* for details.

3. Restart all the Interstage BPM Servers that you want to integrate.

You can now start subprocesses running on one of the Interstage BPM Servers from parent processes running on another. For instructions on creating the process definitions for both the parent and child processes in Interstage BPM, refer to the *Interstage Business Process Manager Studio User's Guide*.

3.7.1 Integration of Interstage BPM to Interstage BPM

The integration of Interstage BPM to Interstage BPM is interactive and involves the following communications:

- Interstage BPM to Interstage BPM CREATEPROCESSINSTANCE
- Interstage BPM to Interstage BPM (Process) COMPLETE

Interstage BPM to Interstage BPM CREATEPROCESSINSTANCE

A parent process in Interstage BPM starts a subprocess on a remote Interstage BPM Server. Interstage BPM will be able to start the remote subprocess only if the Interstage BPM Linkage User (`ibpm_server1`) is authenticated on the remote Interstage BPM server as a normal Interstage BPM user.

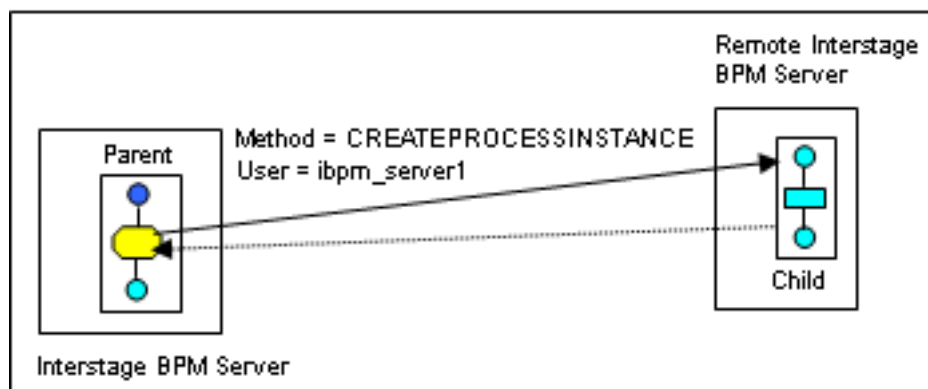


Figure 4: Interstage BPM to Interstage BPM CREATEPROCESSINSTANCE

Interstage BPM to Interstage BPM (Process) COMPLETE

The Interstage BPM remote subprocess notifies its parent process in Interstage BPM when it has completed. This notification can be received only if the Interstage BPM Linkage User (`ibpm_server1`) is authenticated on the local Interstage BPM server as a normal Interstage BPM user.

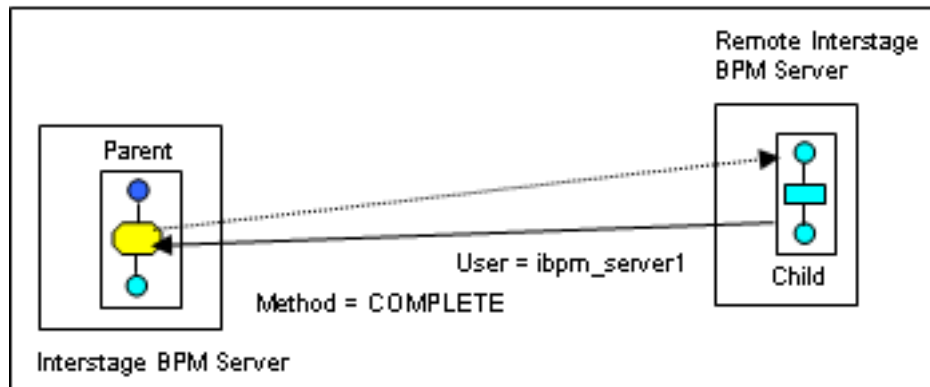


Figure 5: Interstage BPM to Interstage BPM (Process) COMPLETE

3.7.2 Setting a Different Interstage BPM Linkage User

A different user can be used for the Interstage BPM Linkage User.

To set a different Interstage BPM Linkage User:

1. Add the following parameters to the configuration of the Interstage BPM Server:

- `SWAPLinkageUserName=<user name>`
- `SWAPLinkagePassword=<password>`

Set these parameters equal to the user name and password that you want to use as the Interstage BPM Linkage User:

- On the local Interstage BPM Server, specify a user of the remote server that can create subprocesses.
- On the remote server, specify a user of the local Interstage BPM Server.

For instructions on how to add parameters, refer to section *Using the Configuration Export and Import Scripts* on page 29.

You can use the `TextEncrypter` utility to encrypt the password. Refer to the *Interstage Business Process Manager Server and Console Installation Guide* for details.

2. Make sure that this user is authenticated in Interstage BPM to perform all of the necessary operations.

3.8 Configuring Business Calendars

Interstage BPM allows you to create timers that trigger certain events associated with the timer upon its expiration. The Business Calendars feature allows you to create business timers. A business timer is a special type of timer that will only “count” business hours and days and expires only during business hours. Business hours and days are specified in a Business Calendar.

You can create and use your own custom business calendars or modify the default business calendar to meet your needs.

You may create as many Business Calendars as necessary to meet the needs of your organization and use a different Business Calendar for every process definition or process instance.

The following sections explain the format of business calendars. Refer to the *Interstage Business Process Manager Studio User's Guide* and *Interstage Business Process Manager Developer's Guide* for information on how to use business calendars.

3.8.1 Business Calendar Format

Business Calendars are like properties or `.ini` files. They are composed of name-value pairs on a line of the file terminated by a semicolon (;). These name-value pairs specify the business days and hours. To indicate ranges, e.g. start and end times, a comma (,) is used.

The name of the calendar corresponds to the name of the calendar file. The calendar file is given a `.cal` file extension, so it can be recognized as a Business Calendar. Business Calendars are application-specific, and are to be stored in the `<DMSRoot>/apps/<application id>` directory.

When an application is created, a default calendar (named `Default.cal`) is created in the `<DMSRoot>/apps/<application id>` directory. If no other calendar is configured for use with Interstage BPM, you can still add a business timer to your Interstage BPM process instances, and the default calendar will specify the business days and hours. The default calendar also provides an example of a fully functional Business Calendar.

Note: After changing calendar files, restart the Interstage BPM Server.

You can use several parameters to specify business hours:

- `EVERYDAY`
Specifies the default business hours.
- `<Day of the Week>`
Usually used to remove days from the work week, e.g. Saturday and Sunday.
- `<Date>`
Usually used to remove holidays from the work year.

These parameters have the following priority:

`<Date>` > `<Day of the Week>` > `EVERYDAY`

Example: You can set up your business hours as follows:

```
EVERYDAY=9:00,17:00;
FRI=9:00,14:00;
2007/06/08=09:30,13:00;
```

In this example, the effective business hours for Friday, June 08 are from 09:30 to 13:00. For all other Fridays, business hours are from 09:00 to 14:00. For all other days, business hours are from 09:00 to 17:00.

The following sections provide a detailed description of all parameters used in the calendar file.

EVERYDAY

This parameter is required. It defines the default business hours for every day of the week.

Example: `EVERYDAY=9:00,17:00;`

<Day of the Week>

This parameter defines the default business hours for a particular day of the week. This will override the `EVERYDAY` setting for that day of the week.

Example: You can specify the business hours for a particular day (i.e. `SUN, MON, TUE, WED, THU, FRI, SAT`) as follows:

```
FRI=9:00,16:00;
```

No hours specified means that that day of the week is not a working day.

This parameter is usually used to remove Saturday and Sunday from the work week. This is accomplished by setting the day of the week to a null value. In the following example Saturday and Sunday are removed from the work week:

```
SAT=; SUN=;
```

<Date>

This parameter defines the business hours for a specific date. This overrides any settings for `EVERYDAY` or for `<Day of the Week>`.

Format: `yyyy/mm/dd` (year/month/day)

This parameter is usually used to remove holidays from the work year.

Example: `2007/01/01=;`

It is also used to specify special hours like a long lunch hour for a special event.

Example: `2007/12/01=9:00,12:00;15:30,17:00;`

DST

This parameter is used to adjust the hours for Daylight Saving Time or Summer Time.

Format: `<Date>=DST(<Time offset>)`

For `<Time offset>`, you can specify a value from 0 to 4 hours.

Example: To adjust the hours forward in spring and back in fall, you specify the following entries:

```
2006/04/20=DST(1);
```

```
2006/10/19=DST(0);
```

You cannot combine `DST(<Time offset>)` with hour specifications. The following calendar entry, for example, is not valid: `2006/10/20=DST(1);9:00,12:00;13:00,17:30;`

CALENDAR_END

This parameter is required. It defines the last day the calendar is valid. It sets the calendar boundary in that the calendar cannot be used past the date specified by this parameter. If timer expiry is set beyond this time, then the process will go into error state with an array out of bounds error.

Default value: `CALENDAR_END=2010/12/31;`

CALENDAR_BEGIN

This parameter is required. It defines the first day the calendar is valid. It sets the calendar boundary in that the calendar cannot be used before the date specified by this parameter. If timer expiry is set before this time, then the process will go into error state with an array out of bounds error.

Default value: `CALENDAR_BEGIN=2003/01/01;`

Note: The calendar duration can be a maximum of 10 years. Therefore the start time (`CALENDAR_BEGIN`) and the end time (`CALENDAR_END`) of the business calendar may lie maximally 10 years apart.

TIMEZONE

It defines the time zone of the client's location relative to Greenwich Mean Time (GMT).

Example: Pacific Time in the U.S. is GMT - 8 hours, so the Pacific Timezone is specified as

```
TIMEZONE=-8:00;
```

This parameter is optional. If it is not specified then the time zone of the machine on which Interstage BPM Server is running, will be used.

3.8.2 Shift Example

The Business Calendar allows for swing and graveyard shifts that start before midnight and end after midnight.

When you set up a calendar, say you need to give a default time for Mondays. The shift may go from 8:00 PM to 4:00 AM. The entire shift is considered a Monday shift, even though it crosses midnight and occurs half in Tuesday. This shift is designated as being from 20:00 to 28:00. The corresponding calendar entry looks like this:

```
MON=20:00,28:00;
```

On the other hand, if this shift starting Monday night is supposed to be associated with Tuesday, then you use -4:00 to 4:00. In this case, a Monday holiday will have effect on the shift that starts Sunday night, but will have no effect on the shift starting Monday night. The corresponding calendar entry looks like this:

```
TUE=-4:00,4:00;
```

When specifying shifts, note the following:

- You can specify shift ranges (that is, the start and end hour of a shift) from -24 to +48 hours.
- You cannot specify overlapping shifts. The following calendar entry, for example, is not valid:

```
FRI=10:00,17:30;10:30,18:00;
```

3.9 Dynamically Reloadable Properties

If an API call (such as `WFSuperSession.setTenantProperties()`, or `WFAdminSession.updateIflowProperties()`) changes an Interstage BPM property, for the changed value to reflect to the Interstage BPM Server:

- The server usually needs to be re-started
- In case of a tenant-specific property, that tenant needs to be activated

However, there are certain properties that do not require the steps mentioned above for the Interstage BPM Server to reflect their changed values; if an API call changes their values, the changed values are dynamically reloaded in the Interstage BPM memory.

The following is a list of dynamically reloadable properties:

- `AnalyticsLogFile`
- `ClusterAutomateFailoverEnabled`
- `ClusterHeartbeatInterval`
- `ClusterInterceptEvents`

- DebugLevel
- EmailNotificationEnabled
- LogFileRecycleNumber
- LogFileRecycleSize
- SecuritySwitch
- ServerBaseURL
- ServerEmailAddress
- ServerEmailBaseURL
- ServerEmailClientPage
- ServerLogFile
- ServerLogFileRecycle
- ServerNotificationUserProfileField
- ServerReassignMode
- SMTPPassword
- SMTPServerHost
- SMTPServerPort
- SMTPUserName
- SWAPLinkagePassword
- SWAPLinkageUserName
- TemplatePublishers
- WIResponsible
- WSHttpProxyHost
- WSHttpProxyPort

3.10 Changing Tenant Resource Permissions

This information is applicable for SaaS mode only.

In SaaS mode, by default, each tenant has access only to that tenant's resources. If tenants need access to any resources that by default they don't have access to, as an administrator you can change the access permissions for all tenants.

To do this, you need `policy.xml` file. The `policy.xml` file is created at `<Interstage BPM Installation Directory>/server/instance/default/resources/` directory when you deploy Interstage BPM.

The format of the `policy.xml` file should be as follows:

```
<permissions>
  <grant>
    <permission
      className="permission class name"
      target="target name"
      action="action name"/>
    ...
  </grant>
</permissions>
```

here,

Attribute	Mandatory?	Description
className	Yes	Specify class name of the permission
target	No	Specify target name of the permission which is related to the class name
action	No	Specify action of the permission which is related to the class name

The following is a sample `policy.xml` file:

```
<permissions>
  <grant>
    <permission
      className="java.io.SocketPermission"
      target="*"
      action="connect"/>
    <permission
      className="java.io.FilePermission"
      target="/tmp/*"
      action="read"/>
  </grant>
</permissions>
```

Note: Permissions in `policy.xml` affect all tenants.

4 System Configuration Parameters of the Interstage BPM Server

The configuration parameters of the Interstage BPM Server define its operating environment. They define the server's operation modes, map the locations of error logs, command scripts, and configuration files. Those configuration properties that define the entire Interstage BPM System are called System Properties. This chapter covers only the System Properties. Every tenant using Interstage BPM has properties that are unique to that tenant. Those properties are covered in the next chapter.

Many of the server's configuration parameters are similar to parameters used in a query. Server information, for example, specifies the attributes of the Interstage BPM Server. This information is the same throughout this installation of Interstage BPM and will be used by Interstage BPM for authentication among other Server-related tasks. By providing this framework for creating queries, the configuration provides the means by which many different functions can be implemented.

The server's configuration parameters are stored in the Interstage BPM database. Some of the parameters were set when you carried out the initial system configuration using the Interstage BPM Deployment Tool.

If you need to reconfigure the server or change parameters that cannot be configured in the Deployment Tool, you can change the server configuration manually. For instructions, refer to section *Changing Parameter Values Using Tenant Management Console* on page 28 and section *Using the Configuration Export and Import Scripts* on page 29.

Note: Parameter names and values are case sensitive.
Be careful with any configuration changes. If you specify incorrect values, the Interstage BPM Server or other components may not be able to start or errors may occur at runtime.

This appendix lists the names and values of parameters that you may change or add. In addition, some parameters are listed that you must not change but that you may need to know about. Parameters that are used for internal purposes only are not listed. Many parameters have initial values provided by the server. These initial values, if any, are listed at the beginning of each parameter description below. You can override initial values by editing the parameter's value.

4.1 AllowNonDMSFileAttachmentsInEmailAction

Initial value: `false`

Setting this property to `true` allows the Email action to attach a file irrespective of its location on the server. If set to `false`, the Email action can attach files only in the DMS directories.

4.2 AnalyticIntegrationSuspendHours

Initial value: `0`

This parameter is used to specify the amount of time that can lapse before Analytics Intergration is suspended. if an event message is not collected by Analytics Sensor. Analytics Integrattion will resume after the message is collected. For this parameter, the default value is `0`, the minimum value is `1` hour, and the maximum value `1000000` hours.

When an outside range value is specified, the event message is always written in DB.

Prepare the DB capacity in which the event message that occurred for the period, specified for this parameter, can be stored.

4.3 AnalyticsLogFile

Initial value: `logs/AnalyticsError.log`

This parameter, which is set when you deploy the Interstage BPM Server, identifies the analytics log file and its location. This file contains a log of all analytics errors.

For system-level, the value of this parameter is relative to `<SERVERROOT>`, that is, `<Interstage BPM Server Installation Directory>/server/instance/default/`

For tenant-level, the value of this parameter is relative to `<TENANTHOME>`, that is, `<Interstage BPM Server Installation Directory>/server/instance/default/tenants/<tenant name>/`

This parameter is dynamically reloadable. For more information, refer *Dynamically Reloadable Properties* on page 41.

4.4 ApplicationSecurityMode

Initial value for SaaS mode: `Secure`

Initial value for non-SaaS mode: `Relax`

Note: This parameter should not be removed and its value should not be blank.

Application security, that is, whether data for each application is segregated from other applications or not, is controlled by the `ApplicationSecurityMode` parameter.

- If set to `Secure`, data from each application is segregated from other application data. Multiple tenants can be created. An application must be chosen before any operation on a process definition or process instance.
- If set to `Relax`, choosing an application is optional. Cross-application data access is permitted if no application is chosen. Only a single, default tenant can be activated. If no application is chosen:
 - While creating or copying a process definition, the default `System` application is selected.
 - You can access and work with process definitions and instances from all applications.
 - Objects from all applications are retrieved while processing lists and process trigger events.
 - Objects from all applications are notified while processing a notification event.

4.5 ClusterAutomateFailoverEnabled

Initial value: `true`

This property controls whether automated failover is enabled or disabled in a cluster.

If set to `true`, automated failover is enabled.

- The status (running/failed) of all nodes is checked at regular intervals, as specified by the value of the `ClusterHeartbeatInterval` property. For details, refer *ClusterHeartbeatInterval* on page 46.
- If a node fails, unhandled events from that failed node are handled by other active nodes. The number of unhandled events to be handled at a time is specified by the value of the `ClusterInterceptEvents` property. For details, refer *ClusterInterceptEvents* on page 46.

Note: If set to `false`, automated failover is disabled; no status-check of nodes takes place, and if a node fails, unhandled events from that failed node are not handled by other active nodes.

This is a dynamically reloadable property, that is, you do not need to re-start the Interstage BPM server when you change this property.

4.6 ClusterHeartbeatInterval

Initial value: 30

Minimum value: 10

This property specifies the time interval (in seconds) between successive status checks of all nodes in a cluster. For example, if this property is set to 30, the status (running/failed) of each node is checked every 30 seconds.

If an invalid value (less than 10) is specified, the default value of 30 seconds is used.

Note: The status of nodes is checked only if the `ClusterAutomateFailoverEnabled` property is enabled. For details, refer *ClusterAutomateFailoverEnabled* on page 45.

This is a dynamically reloadable property, that is, you do not need to re-start the Interstage BPM server when you change this property.

4.7 ClusterInterceptEvents

Initial value: 30

Minimum value: 10

This specifies the number of unhandled events of a failed node that will be handled at a time by other active nodes during automated failover. Only positive integers greater than or equal to 10 are allowed.

If an invalid value (less than 10) is specified, the default value of 30 is used.

Note: The automated failover will take place only if the `ClusterAutomateFailoverEnabled` property is set to `true`. For details, refer *ClusterAutomateFailoverEnabled* on page 45.

This is a dynamically reloadable property, that is, you do not need to re-start the Interstage BPM server when you change this property.

4.8 ClusterMulticastPort

Initial value:

This parameter specifies the port number used by the multicast group to which the Interstage BPM Servers belong. A multicast group is used to distribute information among the Interstage BPM Servers in a clustered or load-balanced system.

The parameter is used in a clustered or load-balanced system only. **If clustering, ensure you add a value for this parameter.** Use the default value of 5000, or another value of your choice.

4.9 ClusterMulticastTopic

Initial value:

This parameter specifies the multicast group address, which is used to identify the members of a multicast group. A multicast group is used to distribute information among the Interstage BPM Servers in a clustered or load-balanced system.

The multicast group address is an IP address in the range 224.0.0.0 to 239.255.255.255, inclusive. Each member of the group uses the same multicast group address. The address 224.0.0.0 is reserved and must not be used.

The parameter is used in a clustered or load-balanced system only. **If clustering, ensure you add a value for this parameter.** Use the default value of 225.4.5.6, or another value of your choice.

4.10 DBDataSource

Initial value: `iflow.iFlowDS`

This parameter specifies the JNDI name of the data source. The data source is created on the application server while you deploy the Interstage BPM Server. Do not edit this parameter.

4.11 DBSQLQueryTimeout

Initial value: 300

This parameter specifies the maximum time in seconds which should be permitted for a database JDBC call.

Ensure that the value of `DBSQLQueryTimeout` is always lower than the application server's transaction timeout value.

4.12 DebugLevel

Initial value: 1

This parameter sets the debug level of the server as follows:

- -1 = Minimum error information is written to the log file.
- 0 = Errors are written to the log file.
- 1 = Errors and warnings are written to the log file.
- 2 = Errors, warnings and other process sequence messages are written to the log file.

Note: If you specify an invalid value, the Interstage BPM Server uses the default value 1.

This parameter is dynamically reloadable. For more information, refer *Dynamically Reloadable Properties* on page 41.

4.13 EncryptionKey

Initial value:

This parameter is not configured by default. It is required when you specify a special encryption key using `EncryptPassword.bat` or `EncryptPassword.sh`. Refer to the *Interstage Business Process Manager Server and Console Installation Guide* for details on `EncryptPassword.bat` or `EncryptPassword.sh`.

4.14 JMSNamingProvider

Initial value: `<JMS Naming Provider Class>`

Note: This parameter should not be removed and its value should not be blank.

This parameter specifies the name of the JMS Naming Provider class. Its value depends on the application server being used. Do not edit this parameter.

4.15 JMSNamingProviderURL.<Hostname>

Initial value: `<URL of an Interstage BPM Server>`

Note: This parameter should not be removed and its value should not be blank.

This parameter specifies the URL of an Interstage BPM Server instance. The URL is required to receive messages sent to the JMS topics. Its value depends on the application server being used and on the parameters that you specified when deploying the Interstage BPM Server.

The name of the parameter is different for single-server installations and clustered or load-balanced systems. In a single-server installation, the parameter's name is `JMSNamingProviderURL.<Hostname>`. In a clustered or load-balanced system, the parameter's name is `JMSNamingProviderURL.<Hostname>.<Server Name>`.

4.16 JSExtCmdsClasses

Initial value:

This parameter includes a class that enables calls to Web Services through JavaScript.

To extend the set of JavaScript commands using Java classes, specify fully qualified class names of your extension classes. This can be a comma separated list. Ensure that the class is placed in the following directory:

`<Interstage BPM Server Installation Directory>/server/instance/default/classes`

Note: In a clustered or load-balanced system, you must place the customized class in the `classes` subdirectory of each server node.

4.17 JSExtCmdsFile.<Hostname>

Initial value: `<Interstage BPM Server Installation Directory>/server/instance/default/resources/jscommands.txt`

This file extends the scripting commands within the Interstage BPM Script Interpreter and Web Services Script Interpreter. When the server is initially started, it reads this file and extends the Script Interpreter to include these commands. To further extend the scripting language, add additional commands to this file, or add additional files with new commands. If you add additional files, they must be added to this parameter in a comma-separated list.

These definitions could be stored anywhere. The Interstage BPM installation process puts these files into a subdirectory of the Interstage BPM Server installation directory by default.

The name of the parameter is different for single-server installations and clustered or load-balanced systems. In a single-server installation, the parameter's name is `JSExtCmdsFile.<Hostname>`. In a clustered or load-balanced system, the parameter's name is `JSExtCmdsFile.<Hostname>.<Server Name>`.

Note: This parameter also exists as specific to each application; an application developer can configure the application-level parameter within the application BAR file.

4.18 KPIListenerConfigFile.<Hostname>

Initial value: <Interstage BPM Server Installation Directory>/server/instance/default/resources/kpilistener.conf

This parameter identifies the KPI Listener configuration file and its location. The KPI Listener configuration file provides the scan interval that defaults to one minute. After every minute, the listener will check the status of the KPI threshold information.

The name of the parameter is different for single-server installations and clustered or load-balanced systems. In a single-server installation, the parameter's name is `KPIListenerConfigFile.<Hostname>`. In a clustered or load-balanced system, the parameter's name is `KPIListenerConfigFile.<Hostname>.<Server Name>`.

4.19 LogFileRecycleNumber

Initial value: 100

This parameter specifies the maximum number of times a log file will be recycled.

- If the parameter is set to 0, there is no restriction on the number of times a log file can be recycled.
- If the parameter is set to 1, a log file is created only once. When the maximum size of the log file is reached (specified by the *LogFileRecycleSize* on page 49 property), the log file is cleared and reused. No archive log files are created.
- If the parameter is set to a value greater than 1, archive log files are created and recycled. When the maximum number of log files is reached, the oldest archive file is automatically deleted and a new archive log file is created.

If the parameter is not set, the default value 100 is used.

Note: When you restart the Interstage BPM Server, archive log files that were created before the restart will not be recycled. If you no longer need those archive log files, you have to delete them manually.

Note: This parameter will work only if the `ServerLogFileRecycle` parameter is set to `TRUE`. For information about the `ServerLogFileRecycle` parameter, refer *ServerLogFileRecycle* on page 52.

This parameter is dynamically reloadable. For more information, refer *Dynamically Reloadable Properties* on page 41.

4.20 LogFileRecycleSize

Initial value: 10000

This parameter specifies the maximum size of a log file in Kbytes. Any log file that reaches the specified size will be closed and renamed by adding a time stamp. A new log file with the original log file name will be opened and logging will continue with the new log file. The renamed log files can then be removed or deleted as appropriate without stopping the Interstage BPM Server. The `LogFileRecycleNumber` parameter specifies the maximum number of times a log file can be recycled.

For example if you set `LogFileRecycleSize` as follows:

```
LogFileRecycleSize=10000
```

Then, any log file that reaches the size of 10000 KB or 10 MB will be closed and renamed by adding a time stamp.

If the parameter is not set, the default value 10000 is used.

If the parameter is set to 0, no size checking or automatic archiving will be done.

Note: This parameter will work only if the `ServerLogFileRecycle` parameter is set to `TRUE`. For information about the `ServerLogFileRecycle` parameter, refer *ServerLogFileRecycle* on page 52.

This parameter is dynamically reloadable. For more information, refer *Dynamically Reloadable Properties* on page 41.

4.21 ObjectCacheEnabled

Initial value: `false`

This parameter is retained for compatibility purposes. It specifies whether the internal structure of objects is stored in a cache. Do not edit this parameter.

4.22 ProactiveNotificationEnabled

Initial value: `true`

When the value of this parameter is set to `true`, the model-side notifications regarding changes in process definitions, process instances, and work items are enabled. If you want to disable model-side notification then you need to set this parameter to `false`. After disabling notifications, Interstage BPM Server does not post any notifications to the to the Model API. Thus, none of the clients receives any notifications. As a consequence the `WFOBJECTLISTListener` and `ProcessInstanceListener` APIs cannot be used.

4.23 ProactiveSQNotificationEnabled

Initial value: `true`

When the value of this parameter is `true`, the model-side notifications regarding change in sequence ids of process definitions and process instances are enabled. If value for this parameter is set to `false`, the sequence id notifications are disabled. This can result in old data while using model APIs, since the Model cache is not notified of any changes to process definitions and process instances in the server.

Note: Refer section *Model-side Notifications Used by Model API of Interstage Business Process Manager Developer's Guide* for information about Model cache.

4.24 ServerBaseURL

Initial value: `http://<hostname>:<port>/console/`

This parameter specifies the URL of the Interstage BPM Console. Its value is set during the initial Console configuration, which is explained in the *Interstage Business Process Manager Server and Console Installation Guide*.

Note: In this URL, the final `'/` is a required character.

This parameter is dynamically reloadable. For more information, refer *Dynamically Reloadable Properties* on page 41.

4.25 ServerEmailBaseURL

Initial value: `http://<hostname>:<port>/console/`

When Interstage BPM uses email to notify a user about a new work item, the task is presented in the email message as a hyperlink to the server. The hyperlink is generated by prepending the value of this parameter to that of the `ServerEmailClientPage` parameter. The combined URL points to the email client. The parameter's value is set during the initial configuration of the Interstage BPM Console, which is explained in the *Interstage Business Process Manager Server and Console Installation Guide*.

If you develop a custom email client, specify the appropriate value for this parameter, for example:

```
ServerEmailBaseURL.<Hostname>=http://<hostname>:81/console/
```

Note: In this URL, the final '/' is a required character.

This parameter is dynamically reloadable. For more information, refer *Dynamically Reloadable Properties* on page 41.

4.26 ServerGNEmailCustomizerClass

This parameter specifies the location and name of an installation-supplied class to allow the Interstage BPM Server to create customized email messages for work item notification, rather than the default Interstage BPM sample note. This class should implement the

`com.fujitsu.iflow.server.customize.intf.GNEmailCustomizerInterface` interface.

Example: `ServerGNEmailCustomizerClass=MyCustomizedEmail`

If the custom class is in a package, example:

```
ServerGNEmailCustomizerClass=mypackage.email.MyCustomizedEmail
```

Place the customized class in the following directory:

```
<Interstage BPM Server Installation Directory>/server/instance/default/classes
```

Note: In a clustered or load-balanced system, you must place the customized class in the `classes` subdirectory of each server node.

You can configure email notifications at application level. For details, refer section *Using Email Notifications* in *Interstage BPM Developer's Guide*.

4.27 ServerHost.<Hostname>

Initial value: `<hostname>`

Note: This parameter should not be removed and its value should not be blank.

This parameter identifies the host name (machine name) where Interstage BPM is installed. This value is set when you deploy the Interstage BPM Server.

The name of the parameter is different for single-server installations and clustered or load-balanced systems. In a single-server installation, the parameter's name is `ServerHost.<Hostname>`. In a clustered or load-balanced system, the parameter's name is `ServerHost.<Hostname>.<Server Name>`.

4.28 ServerLogFile

Initial value: `logs/IBPMServer.log`

Note: This parameter should not be removed and its value should not be blank.

This parameter, which is set when you deploy the Interstage BPM Server, identifies the server log file and its location. The server logs all errors from the server and all other Interstage BPM adapters in this file. In situations where it cannot be determined where to start looking for a problem, the server log file is an ideal place to start.

For system-level, the value of this parameter is relative to `<SERVERROOT>`, that is, `<Interstage BPM Server Installation Directory>/server/instance/default/`

For tenant-level, the value of this parameter is relative to `<TENANTHOME>`, that is, `<Interstage BPM Server Installation Directory>/server/instance/default/tenants/<tenant name>/`

This parameter is dynamically reloadable. For more information, refer *Dynamically Reloadable Properties* on page 41.

4.29 ServerLogFileRecycle

Initial value: `true`

This parameter controls whether or not any log file (`IBPMServer.log` or `AnalyticsError.log`) will be recycled.

If this parameter is set to `true`,

- when the size of a log file reaches the size defined in the *LogFileRecycleSize* on page 49 parameter, the log file is archived and a new one is created
- the number of times a new log file will be created is specified in the *LogFileRecycleNumber* on page 49 parameter

If the parameter is set to `false`, messages keep appending to the existing log file.

Note: If you specify any other value than `true`, `TRUE`, `false` or `FALSE`, the Interstage BPM Server uses the default value `true`.

This parameter is dynamically reloadable. For more information, refer *Dynamically Reloadable Properties* on page 41.

4.30 ServerMaxUnhandledEvents

Initial value: `10000`

Allowed values: Integers greater than 0

This parameter sets the maximum number of allowed unhandled events in the Interstage BPM Server. If the Interstage BPM Server reaches the maximum threshold set by this parameter, certain user operation will be denied to stop accumulation of more events. Calling those operations will throw an Exception until the Interstage BPM Server reaches below the threshold.

The operations denied are the creating and starting of process instances and the `makeChoice()` option of work items. Action agents configured with automatic `makeChoice()` options will also be hold and will keep retry until the Interstage BPM Server reaches below the threshold. The `RetryInterval` will be configured in the action agent.

Note: If you specify an invalid value, the Interstage BPM Server uses the initial value 10000.

4.31 ServerName

Initial value:

This is the symbolic name of a specific Interstage BPM Server instance.

In a single-server installation, you may change this value to any name that suits your needs. In a clustered or load-balanced system, refer to the *Interstage Business Process Manager Installation Guide* for information on how to set this parameter. The parameter `ServerName` is case sensitive.

If the parameter is not set, the default value `<Hostname>` is used.

4.32 ServerRoot.<Hostname>

Initial value: `<Interstage BPM Server Installation Directory>`

Note: This parameter should not be removed and its value should not be blank.

This is the installation location of Interstage BPM, for example `C:/Fujitsu/InterstageBPM` on Windows and `/opt/FJSVibpm` on UNIX.

The name of the parameter is different for single-server installations and clustered or load-balanced systems. In a single-server installation, the parameter's name is `ServerRoot.<Hostname>`. In a clustered or load-balanced system, the parameter's name is `ServerRoot.<Hostname>.<ServerName>`.

4.33 ServerSharedRoot.<Hostname>

Initial value: `<Interstage BPM Server Installation Directory>`

Note: This parameter should not be removed and its value should not be blank.

This is the shared `ResourceRoot` location of load balanced nodes.

In a single-server installation, the name of this parameter is `ServerSharedRoot.<Hostname>`.

In a clustered or load-balanced system, the name of this parameter is `ServerSharedRoot.<Hostname>.<Servername>`.

4.34 SMTPPassword

Initial value:

This is the password of the user name used for SMTP authentication.

You can use the `TextEncrypter` utility to encrypt the value. Refer to the *Interstage Business Process Manager Server and Console Installation Guide* for details.

This parameter is dynamically reloadable. For more information, refer *Dynamically Reloadable Properties* on page 41.

4.35 SMTPServerHost

Initial value: `<smtp_hostname>`

This parameter identifies the host name (machine name) where the mail server is located. The Interstage BPM Server uses this name to locate the mail server. The value can be specified when deploying the Interstage BPM Server.

This parameter is dynamically reloadable. For more information, refer *Dynamically Reloadable Properties* on page 41.

4.36 SMTPServerPort

Initial value: 25

This is the port number that the mail server listens on. If your mail server uses a different port number, you need to change the value accordingly.

This parameter is dynamically reloadable. For more information, refer *Dynamically Reloadable Properties* on page 41.

4.37 SMTPUserName

Initial value:

This value identifies the user name used for SMTP authentication.

This parameter is dynamically reloadable. For more information, refer *Dynamically Reloadable Properties* on page 41.

4.38 SupportGroupWorkItem

Initial value: `false`

This parameter specifies support for the Group Work Item feature of Interstage BPM. If this parameter is set to `true`, you can specify work items as group work items. This means that anyone in the specified group can work on them.

<p>Note:</p> <ul style="list-style-type: none">• Note the following when setting the parameter to <code>true</code>:<ul style="list-style-type: none">• The functionality and filtering of work items is restricted. Refer to the <i>API Javadoc</i> for details.• The parameter has no effect on work items associated with Voting Activity Nodes and when a Role Java Action is used. A group work item is not generated; instead, work items for each user in the group are generated.• In the Directory Service, don't use the same name for a user and a group. A user having the same name as a group can work on a group work item even if the user doesn't belong to that group.• If you specify any other value than <code>true</code>, <code>TRUE</code>, <code>false</code> or <code>FALSE</code>, the Interstage BPM Server uses the initial value <code>false</code>.
--

4.39 WSHttpProxyHost

Initial value:

This is the host name of your Proxy Server. You will need to configure Interstage BPM to use the Proxy Server if you are using Web Services Java Actions to call external Web Services and access the Internet only through a Proxy Server. To configure Interstage BPM to use the Proxy Server, you

must set this parameter to the host name of your Proxy Server and `WSHttpProxyPort` to the port number of your Proxy Server.

Typically, a Proxy Server blocks calls to external Web Services. If you are trying to call external Web Services with a Web Service Java Action, and your Proxy Server is blocking those calls, your Web Service Java Action will fail to make a connection through the Internet, and the Java Action will fail to work properly.

Once you have performed this configuration, only Web Services that your Proxy definition allows can be called.

This parameter is dynamically reloadable. For more information, refer *Dynamically Reloadable Properties* on page 41.

4.40 WSHttpProxyPort

Initial value:

This is the port number of your Proxy Server. You will need to configure Interstage BPM to use the Proxy Server if you are using Web Services Java Actions to call external Web Services and access the Internet only through a Proxy Server. To configure Interstage BPM to use the Proxy Server, you must set this parameter to the port number of your Proxy Server and `WSHttpProxyHost` to the host name of your Proxy Server.

Typically, a Proxy Server blocks calls to external Web Services. If you are trying to call external Web Services with a Web Service Java Action, and your Proxy Server is blocking those calls, your Web Service Java Action will fail to make a connection through the Internet, and the Java Action will fail to work properly.

Once you have performed this configuration, only Web Services that your Proxy definition allows can be called.

This parameter is dynamically reloadable. For more information, refer *Dynamically Reloadable Properties* on page 41.

4.41 Static Parameters

The Interstage BPM Server has static parameters, which must not be edited.

The following static parameters specify the JNDI names of JMS topics:

- `JMSActionAgentTopic`
- `JMSAnalyticsTopic`
- `JMSEmailNotificationTopic`
- `JMSEnactmentTopic`
- `JMSNotificationTopic`
- `JMSResponseTopic`
- `JMSSQNotificationTopic`
- `JMSTimerTaskTopic`

These static parameters specify the JNDI names of Enterprise Java Beans:

- `ConnectorUserAgentName`
- `DbAccessHelperName`
- `EmailMsgHandlerName`
- `JScriptServiceName`

- ProcDefName
- ProcInstName
- ProcessStateHelperName
- TriggerHandlerName
- UserAgentName
- UserAgentServiceName

The following static parameter specifies the JNDI names of the JMS Connection Factory:

- JMSFactory

Other static parameters:

- AdminUserAgentName
- DBDataSource
- UseJmsEnactment

5 Properties of Interstage BPM Server Tenants

The configuration parameters of the Interstage BPM Server define its operating environment. They define the server's operation modes, map the locations of error logs, command scripts, and configuration files. Every tenant using Interstage BPM has properties that are unique to that tenant. These properties are called Tenant Properties. This chapter covers only the Tenant Properties. The System Properties for the Interstage BPM Server are covered in the previous chapter.

Tenant Properties allow tenants to have their own storage for external systems like a Directory Service or a Metadata Repository. It is necessary for tenants to have their own storage for these external systems to prevent other tenants from viewing this information.

Many of the tenant's configuration parameters are similar to parameters used in a query. LDAP information, for example, specifies which attributes of a user, resource, or document will be used by Interstage BPM to query the Directory Service. By providing this framework for creating queries, the configuration provides the means by which many different functions can be implemented. Access control, for example, is possible because Interstage BPM's internal mechanisms can be coordinated with the mechanism used by the external Directory Service.

The tenant's configuration parameters are stored in the Interstage BPM database. Some of the parameters were set when you carried out the initial system configuration using the Interstage BPM Deployment Tool.

If you need to reconfigure the server or change parameters that cannot be configured in the Deployment Tool, you can change the tenant configuration manually. For instructions, refer to section *Changing Parameter Values Using Tenant Management Console* on page 28 and section *Using the Configuration Export and Import Scripts* on page 29.

Note: Parameter names and values are case sensitive.

Be careful with any configuration changes. If you specify incorrect values, the Interstage BPM Server or other components may not be able to start or errors may occur at runtime.

This appendix lists the names and values of parameters that you may change or add. In addition, some parameters are listed that you must not change but that you may need to know about. Parameters that are used for internal purposes only are not listed. Many parameters have initial values provided by the server. These initial values, if any, are listed at the beginning of each parameter description below. You can override initial values by editing the parameter's value.

5.1 AdminRole

Initial value: `AdminRole`

Note: This parameter should not be removed and its value should not be blank.

This parameter stores the name of the role that will have tenant administrator (also known as the tenant owner) functionality, such as that of managing tenant users, process definitions, process instances and so on.

You can change the administrator to any role defined in the Directory Service or local group store. If this role is not defined in the Directory Service or local group store, or is defined with no members, no users will be able to log in for administrative functions.

5.2 AnalyticsLogFile

For details, refer *AnalyticsLogFile* on page 45.

5.3 DDFrameWorkImplClass

Initial value: `com.fujitsu.iflow.ddframeworkee.impl.AuthenticateHelper`

Note: This parameter should not be removed and its value should not be blank.

This parameter specifies the class used for the Framework Adapter.

If the parameter is not set, the default value

`com.fujitsu.iflow.ddframeworkee.impl.AuthenticateHelper` is used.

You must edit the parameter if you want to use a custom adapter.

5.4 DebugLevel

For details, refer *DebugLevel* on page 47.

5.5 DirectoryImplClass

Initial value: `com.fujitsu.iflow.diradapter.jndiimpl.DirSessionImpl`

This parameter specifies the class used for the adapter to the Directory Service. Its value depends on the adapter specified when deploying the Interstage BPM Server.

`com.fujitsu.iflow.diradapter.jndiimpl.DirSessionImpl` is used for Oracle Directory Server Enterprise Edition and for Microsoft Active Directory.

You must edit the parameter if you want to use a custom adapter.

If the parameter is not set, the default value

`com.fujitsu.iflow.diradapter.jndiimpl.DirSessionImpl` is used.

5.6 DirectoryService

Initial value: 0

This parameter specifies what Directory Service Interstage BPM uses:

- 0=Local User Management
- 1=JNDI (LDAP/Oracle Directory Server Enterprise Edition)
- 2=Microsoft Windows NT
- 3=AD (Microsoft Active Directory)

Note: If the parameter is not set or if it is set to an invalid value, the default value 0 is used.

5.7 DMSFileSeparator

Initial value: /

The separator used in the Document Management System (DMS) path.

5.8 EmailListenerAutoReplyEnabled

Initial value: `true`

This parameter enables or disables the Interstage BPM Server sending out a message in response to the receipt of the task completion email message sent by the task assignee or in response to the

receipt of the email message containing Trigger Payload sent by an user. It can be set to `true` or `false`.

5.9 EmailListenerDeleteInvalidMessages

Initial value: `true`

This parameter enables or disables the deletion of invalid task completion email messages. Invalid messages are those that the Email Listener/Server cannot recognize, so they cannot be process. An example of an invalid message would be a task completion message that attempts to make a choice on an already completed task. Deleting the invalid email messages reduces the load on the Server. It can be set to `true` or `false`.

5.10 EmailListenerEmailAddress

Initial value:

The email address of the Email Listener. This is the address to which task completion email messages and the email messages with Trigger payload are sent. It will automatically appear in the **To** field of the message. This property must be set to a valid email address that is associated with a valid email account on an email Server that can be accessed using the POP email protocol.

5.11 EmailListenerEnabled

Initial value: `false`

This parameter enables or disables the Email Listener for a tenant. If this property is set to `false`, users can still receive the Email Notifications even though the listener is disabled. It can be set to `true` or `false`.

5.12 EmailListenerPassword

Initial value:

This is the password needed to access the mail store.

5.13 EmailListenerPollingInterval

Initial value: 900

Note: This value is in seconds. 900 seconds is equivalent to 15 minutes.

This is the polling interval for the Email Listener. The polling interval is the interval of time upon which the Email Listener checks for new messages.

5.14 EmailListenerPOPPort

Initial value: 110

This is the port number used by the POP protocol for the Email Listener.

5.15 EmailListenerPropertiesFile

Initial value:

This properties file is used to set multiple properties if they are needed to access the mail server using POP3. For instance if the mail server is SSL enabled, then a few optional properties may be set. The Super User can use this properties file to set any additional properties that are required. The list of optional properties is available in the *JavaMail API specification* provided by Oracle Corporation.

5.16 EmailListenerServerHost

Initial value:

This is the Host Name of the mail server used to send messages from the Interstage BPM Server.

5.17 EmailListenerUserName

Initial value:

This is the user name needed to access the mail store.

5.18 EmailNotificationEnabled

Initial value: `true`

This parameter enables or disables the email notification feature. It can be set to `true` or `false`.

Note: If the parameter is not set or if it is set to an invalid value, the default value `true` is used.

This parameter is dynamically reloadable. For more information, refer *Dynamically Reloadable Properties* on page 41.

5.19 EmailStyleSheetFile

Initial value:

This property specifies the HTML style sheet (includes path to the file) used for the task assignment email message and response email messages that the Interstage BPM Server sends out. The Interstage BPM Server applies the styles specified in the style sheet to this message.

5.20 IBPMUserStoreActive

Initial value: `true`

This parameter specifies whether Interstage BPM's local user store is used to manage Interstage BPM user accounts and authenticate users logging in to Interstage BPM:

- If the parameter is set to `true`, the local user store is used.
- If the parameter is set to `false`, the Directory Service specified in the `DirectoryService` parameter is used.

This parameter only defines the system behaviour regarding user management and user authentication. Groups can always be managed in Interstage BPM's local group store regardless of how this parameter is set.

Note:

- If the parameter is not set or if it is set to an invalid value, the default value `true` is used.
- The value of this parameter controls the initial value of the `RequiredUserAttribute` parameter. For information, refer *RequiredUserAttribute* on page 65.

5.21 LDAPAccessUserID

Initial value:

This is the user ID required to create the base structure in the Directory Service for Interstage BPM. It is also required by Interstage BPM during operation to access the Directory Service for authentication and Interstage BPM user profile handling. The value is set when you deploy the Interstage BPM Server.

5.22 LDAPAccessUserPassword

Initial value:

This is the password used in conjunction with `LDAPAccessUserID`. It is required by the Interstage BPM Deployment Tool to create the base structure in the Directory Service for Interstage BPM, and required by Interstage BPM during operation to access the Directory Service for authentication and Interstage BPM user profile handling.

The password is set when you deploy the Interstage BPM Server and it is encrypted for security reasons. If you want to change the password, you can use the `TextEncrypter` utility to encrypt the value. Refer to the *Interstage Business Process Manager Server and Console Installation Guide* for details.

5.23 LDAPContextFactory

Initial value: `com.sun.jndi.ldap.LdapCtxFactory`

This parameter specifies the name of the LDAP Context Factory class. The class is used to authenticate users against a Directory Service. Do not edit this parameter.

5.24 LDAPDBSuffix

Initial value:

This parameter specifies the directory sub-tree in the Directory Service where groups and users to be used with Interstage BPM are stored. Check with your LDAP administrator for the values for the directory sub-tree for your LDAP setup. This value is set when you deploy the Interstage BPM Server.

Note: Users are stored under the "People" organization unit, and groups are stored under the "Groups" organization unit. As such, Interstage BPM prepends the value of this parameter with `ou=people` when searching for users and `ou=groups` when searching for groups.

Example:

If you specify `LDAPDBSuffix=o=fujitsu.com,c=us`, then Interstage BPM will search for users under `ou=people,o=fujitsu.com,c=us` and for groups under `ou=groups,o=fujitsu.com,c=us`

5.25 LDAPFilter

Initial value:

The setting of this parameter to `cn=*` as a search filter indicates that Interstage BPM wants to retrieve all user IDs for authentication of logins and other authentication purposes. This is consistent with the requirements of most LDAP servers, but others may require a different filter keyword. The `LDAPFilter` parameter can be used to specify an alternate search filter notation to be used by Interstage BPM in communicating with the authentication service for Interstage BPM user IDs. This value is set when you deploy the Interstage BPM Server, and should not be changed.

5.26 LDAPGroupCacheAgeSec

Initial value: 3600

This parameter is specified as some number x , where x is in seconds. The initial value is 3600, which means that the LDAP Group Cache expires and new LDAP Group information is cached every hour.

Note: If this parameter is not set or if you specify a value other than a number, the Interstage BPM Server uses the initial value 3600.

5.27 LDAPGroups

Initial value:

This parameter supports an LDAP implementation used in previous versions of the Interstage BPM software and is only used if `LDAPUseDefUsersGroups=Yes`. The `Groups` ou with default Interstage BPM Groups is added when you import the `IBPMLDAPAdd.ldif` file after deployment of the Interstage BPM Server. The `LDAPGroups` parameter can be used to specify an alternate organizational unit and name to be used by Interstage BPM in communicating with the authentication service for Interstage BPM role names.

5.28 LDAPGroupsDN

Initial value:

This parameter specifies the fully-qualified domain name of the LDAP Group that defines a particular set of Interstage BPM roles. This is the set of Interstage BPM roles that are taken directly from the set of Groups defined in LDAP before the installation and deployment of Interstage BPM. The `IflowGroups` LDAP Group is added when you import the `IBPMLDAPAdd.ldif` file after deployment. Refer to the *Interstage Business Process Manager Server and Console Installation Guide* for more information and instructions.

5.29 LDAPPeople

Initial value:

This parameter supports an LDAP implementation used in previous versions of the Interstage BPM software and is only used if `LDAPUseDefUsersGroups=Yes`. The `People` ou with default Interstage BPM users is added when you import the `IBPMLDAPAdd.ldif` file after deployment of the Interstage BPM Server. The `LDAPPeople` parameter can be used to specify an alternate organizational unit and name to be used by Interstage BPM in communicating with the authentication service during session login.

5.30 LDAPServer

Initial value:

This parameter identifies the server (machine name) that the LDAP server is installed on. This value is set when you deploy the Interstage BPM Server.

Note: Do not change the port number, even if you move the server.

5.31 LDAPuid

Initial value:

This parameter is only relevant if you are using Active Directory or Oracle Directory Server Enterprise Edition. It specifies the name of the attribute that identifies the user ID within an LDAP login string. Depending on the parameter value, Interstage BPM passes the following string to the Directory Service:

- `cn=<user ID>` with Active Directory
- `uid=<user ID>` with Oracle Directory Server Enterprise Edition

Add the `LDAPuid` parameter to the configuration parameters and specify the name that needs to be passed to your Directory Service.

Example: `LDAPuid=CN`

5.32 LDAPUseDefUsersGroups

Initial value:

This parameter supports an LDAP implementation used in previous versions of the Interstage BPM software to support backward compatibility. When this parameter is set to `Yes`, it will use the `LDAPGroups` and `LDAPPeople` parameters as specified in their descriptions and assume that you have the organizational units (`ou`'s) defined in them. For example if you use Interstage BPM with LDAP as installed, this parameter will be set to `Yes`. `LDAPGroups` will be set to `ou=Groups` and `LDAPPeople` will be set to `ou=People`. Interstage BPM will assume that you have defined Groups and People organizational units and use them.

If this parameter is set to `No`, Interstage BPM will not use `LDAPGroups` or `LDAPPeople`. It will use the Groups and users defined at installation time. These Groups and users are also specified in the `LDAPGroupsDN` and `LDAPUsersDN` parameters respectively.

5.33 LDAPUsersDN

Initial value:

This parameter specifies the fully-qualified domain name of the LDAP Group that defines a particular set of Interstage BPM users. This is the set of users that are taken directly from the set of users defined in LDAP before the installation and deployment of Interstage BPM. The `IflowUsers` LDAP Group is added when you import the `IBPMADAdd.ldif` file after deployment of the Interstage BPM Server. Refer to the *Interstage Business Process Manager Server and Console Installation Guide* for more information and instructions.

5.34 LogFileRecycleNumber

For details, refer *LogFileRecycleNumber* on page 49.

5.35 LogFileRecycleSize

For details, refer *LogFileRecycleSize* on page 49.

5.36 ManagerAttribute

Initial value: `manager`

The value of this parameter specifies the name of the attribute that will hold the user ID of a user's manager. While the initial value of this parameter is `manager`, it can be changed to any other name that indicates a supervisory reporting relationship. For example, you can change this to `ReportingManager` or `Supervisor` as per your organization's requirements.

The value specified here should also be included in the `RequiredUserAttribute` parameter, with the `cache` option. For example, if the `ManagerAttribute` parameter has the value `ReportingManager`, include `ReportingManager:cache` in the `RequiredUserAttribute` parameter.

Also refer *RequiredUserAttribute* on page 65 and *TeamAttribute* on page 69.

To be able to retrieve organization hierarchy information, and use it to get information, (for example, about a user's subordinates and their work item status) you must specify either of `ManagerAttribute` or `TeamAttribute` properties.

Use only either of `ManagerAttribute` or `TeamAttribute` properties, not both. If both properties are specified, only the `TeamAttribute` property is used.

5.37 MetadataRepositoryPassword

Initial value:

This is the password of the user used for publishing process definition information to a WebDAV Document Management System (DMS) associated with Interstage BPM. The user associated with this password must have the administrative rights to publish to the WebDAV Repository.

This parameter only appears if a Metadata Repository Password is specified when deploying the Interstage BPM Server. Do not specify a Metadata Repository Password if no WebDAV-compliant system is associated with Interstage BPM.

If the password is set during deployment, it is encrypted for security reasons. If you want to change the password, you can use the `TextEncrypter` utility to encrypt the value. Refer to the *Interstage Business Process Manager Server and Console Installation Guide* for details.

5.38 MetadataRepositoryURL

Initial value:

This is the location used for publishing process definition metadata to a WebDAV Document Management System (DMS) associated with Interstage BPM.

This parameter only appears if a Publish Metadata URL is specified when deploying the Interstage BPM Server. Do not specify a Publish Metadata URL if no WebDAV-compliant system is associated with Interstage BPM.

5.39 MetadataRepositoryUserName

Initial value:

This is the user name used for publishing process definition information to a WebDAV Document Management System (DMS) associated with Interstage BPM. The user specified must have the administrative rights to publish to the WebDAV Repository.

This parameter only appears if a Metadata Repository User Name is specified when deploying the Interstage BPM Server. Do not specify a Metadata Repository User Name if no WebDAV-compliant system is associated with Interstage BPM.

5.40 RequiredUserAttribute

Initial value: depends on the value of the `IBPMUserStoreActive` property

- If `IBPMUserStoreActive` is true, initial value of `RequiredUserAttribute` is `uid:local,iflownotification:local,email:local,dmsdir:local,manager:local:cache,favorites:local,dashboard:local,cn:local:cache,title:local:cache`
- If `IBPMUserStoreActive` is false, initial value of `RequiredUserAttribute` is `uid:local,iflownotification:local,email:local,dmsdir:local,manager:cache:dn,favorites:local,dashboard:local,cn:cache,title:cache`

Note: Values above should be used without spaces.

This parameter specifies the default user attributes and their default options that Interstage BPM uses for the User Profile feature. You can add new attributes to this list, separated by commas. Make sure that the newly added attributes are defined in the schema of your Directory Service or in Interstage BPM's local user store.

Only attributes specified in the `RequiredUserAttribute` parameter are used for the Interstage BPM User Profile feature. All of the attributes specified here can be edited through the Interstage BPM Console.

Each attribute can have the following options:

- `local`: specifying this causes the values of the attribute to be stored in the Interstage BPM database, even if you use a remote directory server such as LDAP.
- `cache`: specifying this causes the values of the attribute to be stored in the cache of the Interstage BPM database, thus enabling you to use search functionality on this attribute.

Note: Using this option brings in the following length restrictions on the attribute:

- Its name should not exceed 64 characters.
- Its value should not exceed 256 characters.

If these limits are exceeded, the name and values will not be stored in the cache.

Interstage BPM Server refreshes the user attributes in the cache in the following cases:

- When you modify the `RequiredUserAttribute` parameter values
- When you call the Model API `WFAdminSession.refreshAllUserProfileCache()` method.
- `dn`: You can specify this option only for attributes whose values are user names (for example, the `uid` and `manager` attributes, whose values are user names). If you specify the `dn` option for an attribute:
 - Interstage BPM Server converts the attribute's values (user names) to the `DN` (Distinguished Name) format before storing it in the directory server

- While retrieving the attribute values, Interstage BPM Server converts the values from the `DN` format to user names.

Note: For an attribute, do not specify the `dn` option together with the `local` option. If you do this, a warning is output to `IBPMServer.log`.

Note: Do not remove the `RequiredAttributes` parameter from the configuration parameters. Otherwise, the Interstage BPM Server will not be able to start.

Note: If your user attribute values are stored in a remote directory server, note the following:

- Oracle Directory Server Enterprise Edition can store multiple values of the `manager` user attribute
- Microsoft® Active Directory can store only a single value of the `manager` user attribute

Also refer *IBPMUserStoreActive* on page 60, *ManagerAttribute* on page 64 and *TeamAttribute* on page 69.

5.41 SecuritySwitch

Initial value: `false`

Interstage BPM can be set to two security levels: Demo Mode and Security Mode. Demo Mode is useful while key members of your work team learn the features of the software. Later, Security Mode provides a stable and controlled environment for implementing Interstage BPM across your company.

Note: If you specify any other value than `true`, `TRUE`, `false` or `FALSE`, the Interstage BPM Server uses the initial value `false`.

Demo Mode (`false`)

This mode restricts access to Interstage BPM in two ways:

- Only the person who is assigned a work item may make choices about it, thus advancing the process to the next work item - or completing it.
- Only members of the `AdminRole` can log in to a client as an Admin user to access the Administration functionality in the Model API.

In all other ways, all Interstage BPM users can experiment with all of its functions, including creating and editing process definitions and instances while it is running in Demo Mode.

This parameter is dynamically reloadable. For more information, refer *Dynamically Reloadable Properties* on page 41.

Security Mode (`true`)

In Security Mode, access to process definitions, process instances, and work items is restricted to the specific people who need to use them.

- Only members of the role specified in the `TemplatePublishers` parameter can create new process definitions.
- Only the owner of the process definition can edit it.

- Only the process owners and current assignees can view any specific process. (“Current assignees” are those who have active task assignments. This does not include people who will have task assignments later in the process.)
- Only the process owners can structurally edit their specific process. This means they can add, modify or delete structural elements of the process instance like node instances, arrow instances and User Defined Attributes.
- Only assignees of an activity can commit (i.e., complete and sign off) the work item.

Setting Up Security Mode

To turn on Security Mode:

1. Specify `SecuritySwitch=true` to enable Security Mode.
2. Also specify `TemplatePublishers=<role name>`. This role must be defined in your Directory Service or in Interstage BPM's local group store. For example, if you have defined a role of `pubRole` in the Directory Service or local group store, you would type `TemplatePublishers=pubRole`.

5.42 SendAnalyticEvents

Initial value: `false`

This parameter specifies whether the Interstage BPM Server sends events to a JMS queue that can then be evaluated by Interstage Analytics. The parameter can be set to `true` or `false`.

Note: If the parameter is not set or if it is set to an invalid value, the default value `false` is used.

5.43 ServerEmailAddress

Initial value: `<email address specified during tenant creation>`

This parameter specifies the address that will appear in the `From:` field of all email messages sent from the Interstage BPM Server. This includes all email notifications, work item escalations, timer resolution messages, etc.

This email address should be the email address or alias email address of the Interstage BPM Super User that manages the email server used by Interstage BPM.

This parameter is dynamically reloadable. For more information, refer *Dynamically Reloadable Properties* on page 41.

5.44 ServerEmailClientPage

Initial value:

The value of this parameter is appended to the value of the `ServerEmailBaseURL` parameter to generate a URL that points to the email client. If you develop a custom email client, specify the appropriate value for this parameter.

This parameter is dynamically reloadable. For more information, refer *Dynamically Reloadable Properties* on page 41.

5.45 ServerLogFile

For details, refer *ServerLogFile* on page 52.

5.46 ServerLogFileRecycle

For details, refer *ServerLogFileRecycle* on page 52.

5.47 ServerNotificationUserProfileField

Initial value: `iflownotification`

The parameter specifies the name of the field associated with the user in the Directory Service or in Interstage BPM's local user store, which in turn specifies whether the user is to receive email notification or not.

This parameter is dynamically reloadable. For more information, refer *Dynamically Reloadable Properties* on page 41.

5.48 ServerPassword

Initial value: `<Server Login password for tenant owner>`

Note: This parameter should not be removed and its value should not be blank.

This is the password the Interstage BPM Server uses for logging into the Directory Service to ascertain directory settings. The login takes place when the Interstage BPM Server starts up.

`ServerUserName` specifies the tenant owner associated with this password.

The password is set when you create the tenant owner while deploying the Interstage BPM Server and it is encrypted for security reasons. If you want to change the password, you can use the `TextEncrypter` utility to encrypt the value. Refer to the *Interstage Business Process Manager Server and Console Installation Guide* for details.

Note: If Local User Management (LUM) is used as directory service then the change in tenant owner password will automatically change the `ServerPassword`. Refer section *Changing Username and Password of Tenant Owner of Interstage Business Process Manager Server and Console Installation Guide* for details.

5.49 ServerReassignMode

Initial value: `regular`

This field is used to set Interstage BPM's Reassignment Mode to one of the following:

- **Regular Mode** (`regular`): Any current assignee of the activity or any of its process owners can reassign the activity to new assignees.
- **Process-Owner-Only Mode** (`owner`): Only a process owner can reassign an activity to one or more other people.
- **No-Reassignment Mode** (`none`): Reassignment is disabled, and nobody can reassign an activity.

This parameter is dynamically reloadable. For more information, refer *Dynamically Reloadable Properties* on page 41.

5.50 ServerUserName

Initial value: `<Server Login user id of tenant owner specified during tenant creation>`

Note: This parameter should not be removed and its value should not be blank.

This is the user name the Interstage BPM Server uses for logging into the Directory Service to ascertain directory settings. The login takes place when the Interstage BPM Server starts up. You specified the user name of the tenant owner when deploying the Interstage BPM Server. The user specified must have access to system resources.

5.51 SWAPLinkagePassword

Initial value: <Server Login user password>

This parameter specifies the password of the user that actually initiates subprocesses requested by process instances running on remote servers.

You can use the `TextEncrypter` utility to encrypt the value. Refer to the *Interstage Business Process Manager Server and Console Installation Guide* for details.

This parameter is dynamically reloadable. For more information, refer *Dynamically Reloadable Properties* on page 41.

5.52 SWAPLinkageUserName

Initial value: <Server Login user id>

This parameter specifies the user that actually initiates subprocesses requested by processes running on remote servers.

Refer to section *Integrating Interstage BPM with Other Servers* on page 36 for more information about the Interstage BPM Linkage User.

This parameter is dynamically reloadable. For more information, refer *Dynamically Reloadable Properties* on page 41.

5.53 TeamAttribute

Initial value:

The value of this parameter specifies the name of the attribute that will hold the user IDs of a user's team members who report to that user. While this parameter has no initial value, you can add any name that indicates a subordinate reporting relationship. For example, you can add `TeamMember` as a value for this parameter.

The value specified here should also be included in the `RequiredUserAttribute` parameter, with the `cache` option. For example, if the `TeamAttribute` parameter has the value `TeamMember`, include `TeamMember:cache` in the `RequiredUserAttribute` parameter.

Also refer *RequiredUserAttribute* on page 65 and *ManagerAttribute* on page 64.

To be able to retrieve organization hierarchy information, and use it to get information (for example, about a user's subordinates and their work item status) you must specify either of `ManagerAttribute` or `TeamAttribute` properties.

Use only either of `ManagerAttribute` or `TeamAttribute` properties, not both. If both properties are specified, only the `TeamAttribute` property is used.

5.54 TemplatePublishers

Initial value: `IFlowPublishers`

This parameter is specified in conjunction with enabling Security Mode by setting the `SecuritySwitch` parameter. The value of this parameter is the name of the group defined in the Directory Service or

in Interstage BPM's local group store, which contains a list of members who are authorized to publish process definitions while in Security Mode.

This parameter is dynamically reloadable. For more information, refer *Dynamically Reloadable Properties* on page 41.

5.55 UDDIBusinessName

Initial value:

This is the name of the organization that is publishing business process definition information to the UDDI Registry. It is an identifier that helps you to categorize the process definition information added to the UDDI Registry and makes it easier to search and retrieve the process definition Web Services.

In order to be able to publish process definition information to the UDDI Registry, the name specified in `UDDIBusinessName` must exist in the UDDI Registry.

This parameter only appears if a UDDI Business Name is specified when deploying the Interstage BPM Server. Don't specify a UDDI Business Name if no UDDI Registry is associated with Interstage BPM.

5.56 UDDIInquiryURL

Initial value:

This parameter specifies UDDI Query Server URLs. UDDI Query Server URLs are used to search UDDI Registries containing information about Web Services (WSDL documents). Multiple URLs may be added to this parameter in a comma-separated list.

This parameter only appears if a UDDI Inquiry URL is specified when deploying the Interstage BPM Server.

5.57 UDDIPublisherPassword

Initial value:

This is the password of the user used for publishing process definition information to a UDDI Registry associated with Interstage BPM. `UDDIPublisherUserName` specifies the user associated with this password.

This parameter only appears if a UDDI Publisher Password is specified when deploying the Interstage BPM Server. Do not specify a UDDI Publisher Password if no UDDI Registry is associated with Interstage BPM.

If the password is set during deployment, it is encrypted for security reasons. If you want to change the password, you can use the `TextEncrypter` utility to encrypt the value. Refer to the *Interstage Business Process Manager Server and Console Installation Guide* for details.

5.58 UDDIPublisherUserName

Initial value:

This is the user name used for publishing process definition information to a UDDI Registry associated with Interstage BPM. The user specified must have the following rights:

- Administrative rights to publish to the UDDI Registry
- Rights to publish data to the organization specified in `UDDIBusinessName`

This parameter only appears if a UDDI Publisher User Name is specified when deploying the Interstage BPM Server. Do not specify a UDDI Publisher User Name if no UDDI Registry is associated with Interstage BPM.

5.59 UDDIPublishURL

Initial value:

This is the location used for publishing process definition information to a UDDI Registry associated with Interstage BPM.

This parameter only appears if a UDDI Publish URL is specified when deploying the Interstage BPM Server. Do not specify a UDDI Publish URL if no UDDI Registry is associated with Interstage BPM.

5.60 WebDAVKeyStore

Initial value:

This parameter should point to the path of the keystore, where the SSL security certificate obtained from WebDAV Server is added.

5.61 WIResponsible

Initial value: `User`

This parameter specifies the permission level for acting on a work item. The available options for this parameter are:

- `User`: This is default setting. Only a work item assignee of the work item can make a choice on the work item.
- `Group`: Any member of a group can make a choice on work items assigned to any other user in the group.
- `All`: Anyone can make a choice on any work item.

This parameter is dynamically reloadable. For more information, refer *Dynamically Reloadable Properties* on page 41.

6 Making a Backup of Your Data

As a system administrator, back up the following data against an unexpected system shut down:

- Configuration Files
- Log Files
- Document Management System (DMS) directory
- Database

Refer to the following sections for more backup-related information.

6.1 Configuration Files

Besides the configuration parameters stored in the Interstage BPM database, Interstage BPM uses several configuration files. The following table gives a list of the configuration files, their typical location and their meaning.

It is assumed that Interstage BPM is installed in C:\Fujitsu\InterstageBPM on Windows and in /opt/FJSVibpm on UNIX.

Configuration File	Location	Remarks
DmsCollections.xml	<Interstage BPM Server Installation Directory>/server/instance/default/tenants/ <tenant name>/resources	Configuration file for the Document Management System (DMS) for a tenant.
kpilistener.conf	<Interstage BPM Server Installation Directory>/server/instance/default/resources	Configuration file for the KPI Listener.

6.2 Log Files

The main log file for Interstage BPM is the `IBPMServer.log` file. All errors from the server and the Interstage BPM adapters are logged in this file. All analytics errors are logged in the `AnalyticsError.log` file. By default, both these log files are located at the following locations:

- System-level log files are located at <Interstage BPM Server Installation Directory>/server/instance/default/logs
- Tenant-specific log files are located at <Interstage BPM Server Installation Directory>/server/instance/default/tenants/<tenant name>/logs

Locations of these log files are controlled by *ServerLogFile* on page 52 and *AnalyticsLogFile* on page 45.

6.3 DMS Directory

Make sure that you backup all directories and sub-directories defined in `DmsCollections.xml`; they include all files uploaded by users, such as Workflow Applications, located in the <DMSRoot>/apps directory.

6.4 Database

All data, which result with the work with the Interstage BPM, for example process definitions and process instances, are stored in the database. You have to do database operations like the following with the default functionalities of the database server that you are using:

- Integrity check
- Database statistics
- Database backups
- Restoring databases

Refer to the manuals of your database server for more information.

Appendix A: Database Schema

Note: This Appendix serves only for information purposes. The Database Schema described in this Appendix could be changed in a future version of Interstage BPM. If you develop your own application which is based on the Database Schema, you need to change the application when the Database Schema is changed in future.

The following sections describe all tables currently available.

ActiveUser

This table represents the data about a logged in user.

Column Name	Types	Remarks
id	NUMBER NOT NULL	Each logged in user is given a unique identifier by the server.
longRaw	BLOB NOT NULL	The data associated with the user.
serverName	NVARCHAR2(256) NOT NULL	The name of the server where the user logged in.
tenantId	NUMBER NOT NULL	Unique identifier of a tenant
PRIMARY KEY(ID)		Each user is distinguished by the identifier assigned to it by the server.

FOREIGN KEY (tenantId) references Tenant(tenantId)

ActivityDataSet

This table represents the data set associated with an activity instance.

Column Name	Types	Remarks
activityInstanceId	NUMBER NOT NULL	The identifier of the activity instance for the associated data set.
longRaw	BLOB NULL	An array of "name-type-value" structure representing the data associated with the activity.
PRIMARY KEY(ACTIVITYINSTANCEID)		There is only one data set associated with a unique activity instance.

ActivityDataSetDefinition

This table represents the data set definitions associated with each activity.

Column Name	Types	Remarks
name	NVARCHAR2(64) NOT NULL	Name of the data element.

Column Name	Types	Remarks
activityDefinitionId	NUMBER NOT NULL	The identifier of the activity definition with which this data element is associated.
type	NUMBER NOT NULL	Type of the data element.
PRIMARY KEY(NAME, ACTIVITYDEFINITIONID)		Each data element is distinguished by its name and the identifier of the activity definition with which it is associated.

FOREIGN KEY (activityDefinitionId) references ActivityDefinition(activityDefinitionId)

ActivityDefinition

This table represents an activity definition of Interstage BPM. Activity definitions serve as templates for the creation of activity instances of process instances.

Column Name	Types	Remarks
activityDefinitionId	NUMBER NOT NULL	The identifier of the activity definition.
subProcessDefinitionId	NUMBER NOT NULL	For chained and subprocess activities, the identifier of the subprocess spawned by this activity. (DEPRECATED)
activityTypeId	NUMBER NOT NULL	The identifier depicting the type of the activity definition.
label	NVARCHAR2(64) NOT NULL	The name of the activity definition.
processDefinitionId	NUMBER NOT NULL	The identifier of the process definition to which this activity definition belongs.
activityRole	NVARCHAR2(256) NULL	The name of the group(s) that are the valid recipients of this activity when it is instantiated as part of the process instance.
longRaw	BLOB NULL	The data associated with this activity.
posX	NUMBER NOT NULL	The x-coordinate of the lower left corner of the activity definition for use with the Interstage BPM Console.
posY	NUMBER NOT NULL	The y-coordinate of the lower left corner of the activity definition for use with the Interstage BPM Console.

Column Name	Types	Remarks
description	NVARCHAR2(256) NULL	A detailed explanation regarding this activity.
subProcessDefinitionName	NVARCHAR2(64) NULL	For chained and subprocess activities, the name of the process definition, from which a process instance that will be spawned by this activity.
flags	NUMBER NULL	An optimization parameter recording the presence of various scripts for this activity.
customNodeType	NVARCHAR2(256) NULL	String value containing the fully qualified class name of the Custom Node. If this node is not a Custom Node, then NULL is stored or returned. With Custom Nodes, any Node may now have a custom UI presentation. While it is still based upon one of the standard node types. Custom Nodes are uniquely identified by the fully qualified class name that implements their UI.
subProcessDefinitionURI	NVARCHAR2(2000) NULL	The URI used for identifying the subprocess to be started.
priority	NUMBER NOT NULL	The priority of the activity definition. This will be the default priority of activity instance.
PRIMARY KEY(ACTIVITYDEFINITIONID)		Each activity definition is distinguished by its unique identifier.

FOREIGN KEY (processDefinitionId) references ProcessDefinition(processDefinitionId)

ActivityInstance

An activity instance represents a single activity in a process instance.

Column Name	Types	Properties	Remarks
activityInstanceid	NUMBER NOT NULL		The identifier of the activity instance.

Column Name	Types	Properties	Remarks
state	NUMBER NOT NULL	0=Initial 1=Ready 2=Disabled 3=AisRunning 4=WaitingOnSubProcess 5=AisClosed 6=AisAborted 7=AisCompleted 8=LastWorkItemCompleted 9=LastWorkItemAborted 10=AisError 11=AisSuspend	The state of the activity.
processInstanceId	NUMBER NOT NULL		The identifier of the process instance to which this activity belongs.
activityDefinitionId	NUMBER NOT NULL		The identifier of the activity definition which is the process definition for this activity.
subProcessInstanceId	NUMBER NOT NULL		For chained and subprocess activities, the identifier of the subprocess spawned by this activity.
longRaw	BLOB NULL		The data associated with this activity.
subProcessInstanceURI	NVARCHAR2(2000) NULL		The URI used for identifying the subprocess instance to be started.
dueDateExpireTime	DATE NOT NULL		The due date time in milliseconds. If this activity instance has no due date, the expire time is 01-01-1970.
PRIMARY KEY(ACTIVITYINSTANCEID)			Each activity instance is distinguished by its unique identifier.
priority	NUMBER NOT NULL		The priority of activity instance.
label	NVARCHAR2(64) NOT NULL		The name of the activity instance.

Column Name	Types	Properties	Remarks
activityTypeld	NUMBER NOT NULL	0 = Start Node 1 = Exit Node 2 = Activity Node 4 = And Node 5 = Condition Node 6 = Or Node 7 = SubProcess Node 8 = Delay Node 9 = Chained Process Node 10 = Voting Activity Node 11 = Remote SubProcess Node 12 = Event Activity Node 13 = Compound Activity Node 14 = Dynamic Activity Node	The identifier depicting the type of the activity instance.

FOREIGN KEY (processInstancelld) references ProcessInstance(processInstancelld)

ActivityTimerDefinition

This table represents the timer definitions associated with an activity definition.

Column Name	Types	Remarks
timerId	NUMBER NOT NULL	The identifier of the activity timer definition.
activityDefinitionId	NUMBER NOT NULL	The activity definition with which this timer is associated.
label	NVARCHAR2(64) NULL	The name of the timer.
data	BLOB NULL	The data associated with this timer.
isDueDate	NUMBER NULL	Indicates that this timer definition defines a due date time calculation and related optional actions.
PRIMARY KEY(TIMERID)		Each activity timer definition is distinguished by its unique identifier.

FOREIGN KEY (activityDefinitionId) references ActivityDefinition(activityDefinitionId)

AdvanceSearch

This table represents an advanced search for work items or process instances defined in the Interstage BPM Console.

Column Name	Types	Properties	Remarks
userId	NVARCHAR2(64) NOT NULL		The user who saved this advanced search. It belongs to this user and is not visible to any other user.
queryName	NVARCHAR2(64) NOT NULL	WI = Work Item PI = Process Instance	The name of the advanced search.
queryType	NVARCHAR2(64) NOT NULL	0 = not default 1 = default	The type of this advanced search.
defaultValue	NUMBER NULL		Identifies whether this is a default search for this user or not. If it is a default search, it will be run automatically when the user visits the Work Item list page or Process Instances list page in the Console.
queryString	NCLOB NOT NULL		The set of parameters associated with this search.
tenantID	NUMBER NOT NULL		Unique identifier of tenant
PRIMARY KEY(USERID, QUERYNAME, QUERYTYPE, TENANTID)			Each advanced search is distinguished by user ID, query name, query type and tenant ID.

FOREIGN KEY (tenantId) references Tenant(tenantId)

ApplicationErrorNode

Column Name	Types	Remarks
entryNr	NUMBER NOT NULL	
applicationContainerId	NUMBER NOT NULL	Unique identifier of application that contains the error node
errorNode	NVARCHAR2(256) NOT NULL	
targetState	NUMBER NOT NULL	
PRIMARY KEY		

FOREIGN KEY (applicationContainerId) references WorkflowApplication(applicationContainerId)

ApplicationTimer

This table represents timers contained in the Process Scheduler associated with an application.

Column Name	Types	Remarks
timerInstanceid	NUMBER NOT NULL	Unique identifier of the timer instance of the process scheduler
applicationContainerId	NUMBER NOT NULL	Unique identifier of the application that contains the process scheduler
label	NVARCHAR2(64) NOT NULL	The name of the timer
data	BLOB NULL	The data associated with the timer
realTimeInMillis	NVARCHAR2(64) NOT NULL	This indicates the absolute time when this timer will expire.
lastTimeInMillis	NVARCHAR2(64) NOT NULL	This indicates the last expiration time of this timer.
isHandled	NUMBER NOT NULL	Indicates the state of the timer. 0 = NotHandled 1 =Handled 3 = Error 8 = ApplicationStopped
serverName	NVARCHAR2(64) NULL	The name of the server on which the Process Scheduler is started and handled.
PRIMARY KEY(TIMERINSTANCEID)		Each timer instance is distinguished by its unique identifier

FOREIGN KEY (applicationContainerId) references WorkflowApplication(applicationContainerId)

ArchivedProcessDefinition

This table represents archived process definitions.

Column Name	Types	Remarks
id	NUMBER NOT NULL	The identifier of the process definition.
label	NVARCHAR2(64) NOT NULL	The name of the process definition.
xmlString	NCLOB NULL	The XML string representing the archived process definition with its associated activities, arrows, timers and data elements.

Column Name	Types	Remarks
applicationContainerId	NUMBER NOT NULL	Unique identifier for the application that contains the archived process definition
PRIMARY KEY(ID)		Each archived process definition is distinguished by its unique identifier.

FOREIGN KEY (applicationContainerId) references WorkflowApplication(applicationContainerId)

ArchivedProcessInstance

This table represents archived process instances.

Column Name	Types	Remarks
id	NUMBER NOT NULL	The identifier of the process instance.
label	NVARCHAR2(64) NOT NULL	The name of the process instance.
processDefinitionId	NUMBER NOT NULL	The process definition from which this process instance was created.
timeCreated	DATE NULL	The time the process instance was created.
timeCompleted	DATE NULL	The time the process instance was closed.
xmlString	NCLOB NULL	The XML string representing the archived process instance with its associated activity instances, arrow instances, timer instances and data elements.
applicationContainerId	NUMBER NOT NULL	Unique identifier of the application that contains this process instance
PRIMARY KEY(ID)		Each archived process instance is distinguished by its unique identifier.

FOREIGN KEY (applicationContainerId) references WorkflowApplication(applicationContainerId)

ArrowDefinition

This table represents an arrow definition of Interstage BPM. Arrow definitions serve as templates for the creation of arrow instances of process instances.

Column Name	Types	Remarks
arrowDefinitionId	NUMBER NOT NULL	The identifier of the arrow definition.

Column Name	Types	Remarks
arrowTypeId	NUMBER NOT NULL	The identifier of the type of arrow (currently there is only one supported type of arrow).
processDefinitionId	NUMBER NOT NULL	The identifier of the process definition to which this arrow definition belongs.
label	NVARCHAR2(64) NOT NULL	The descriptive name of this arrow definition.
longRaw	BLOB NULL	The data associated with this arrow definition.
description	NVARCHAR2(256) NULL	The explanatory notes for this arrow definition.
srcActivityDefinitionId	NUMBER NOT NULL	The identifier of the activity definition from which this arrow definition originates.
targetActivityDefinitionId	NUMBER NOT NULL	The identifier of the activity definition into which this arrow definition terminates.
event	NVARCHAR2(64) NULL	For future expansion.
posX1	NUMBER NOT NULL	The starting point's (tail) x-coordinate of this arrow for graphical rendering.
posY1	NUMBER NOT NULL	The starting point's (tail) y-coordinate of this arrow for graphical rendering.
posX2	NUMBER NOT NULL	The ending point's (head) x-coordinate of this arrow for graphical rendering.
posY2	NUMBER NOT NULL	The ending point's (head) y-coordinate of this arrow for graphical rendering.
PRIMARY KEY(ARROWDEFINITIONID)		Each arrow definition is identified by its unique identifier.

FOREIGN KEY (processDefinitionId) references ProcessDefinition(processDefinitionId)

ArrowInstance

This table represents an arrow instance of Interstage BPM.

Column Name	Types	Properties	Remarks
arrowInstanceid	NUMBER NOT NULL		The identifier of the arrow instance.
state	NUMBER NOT NULL	0	The state of the arrow instance.
processInstanceid	NUMBER NOT NULL		The identifier of the process instance to which this arrow instance belongs.
arrowDefinitionid	NUMBER NOT NULL		The identifier of the arrow definition from which this instance of the arrow was created.
srcActivityInstanceid	NUMBER NOT NULL		The identifier of the activity instance from which this arrow instance originates.
targetActivityInstanceid	NUMBER NOT NULL		The identifier of the activity instance in which this arrow instance terminates.
label	NVARCHAR2(64) NOT NULL		The descriptive name of this arrow instance.
PRIMARY KEY(ARROWINSTANCEID)			Each arrow instance is distinguished by its unique identifier.

FOREIGN KEY (processInstanceid) references ProcessInstance(processInstanceid)

Comments

This table represents the definitions of the elements associated with each comment.

Column Name	Types	Remarks
commentid	NUMBER NOT NULL	The identifier of the comment with which the comments are being represented.
createdTime	DATE NOT NULL	The time that the comment is created.
userid	NVARCHAR2(256) NOT NULL	The identifier for user of the person entering comment.
type	NUMBER NOT NULL	The type of comment whether it is Process Instance comment or Node Instance comment.

Column Name	Types	Remarks
message	NVARCHAR2(2000) NOT NULL	The message added in the comment.
processInstancelId	NUMBER NOT NULL	The identifier of the process instance which the comment is associated with.
consumerId	NUMBER NOT NULL	The identifier of either node instance or process instance for which comment is added
deletedTimeStamp	DATE NULL	The time stamp of when the comment is deleted.
PRIMARY KEY(commentId)		Each comment is distinguished by its unique commentId.

FOREIGN KEY (processInstancelId) references ProcessInstance(processInstancelId)

DataSetDefinitionValues

This table represents the definitions of the data elements associated with each process definition.

Column Name	Types	Remarks
processDefinitionId	NUMBER NOT NULL	The identifier of the process definition with which the data elements are being represented.
data	BLOB NOT NULL	The data associated with this process definition.
PRIMARY KEY(PROCESSDEFINITIONID)		Each process definition has at most one set of data element definitions.

FOREIGN KEY (processDefinitionId) references ProcessDefinition(processDefinitionId)

ElementLock

This table represents the lock state of process definitions and process instances.

Column Name	Types	Remarks
type	NUMBER NOT NULL	The identifier of the type of element (process definitions, process instances).
elementId	NUMBER NOT NULL	The identifier of the element.
lockingId	NUMBER NOT NULL	The identifier of the user holding the lock for the element.
serverName	NVARCHAR2(256) NOT NULL	The name of the server holding the lock for the element.

Column Name	Types	Remarks
timeLocked	DATE NOT NULL	The time when the element was locked.
PRIMARY KEY(TYPE, ELEMENTID)		Each lock is distinguished by the type of element and the identifier of the element being locked.

GroupToGroup

This table stores associations between user groups.

Column Name	Types	Remarks
childGroup	NVARCHAR2(256) NOT NULL	The name of a group that is a child of another group.
parentGroup	NVARCHAR2(256) NOT NULL	The name of the parent group to which the child group belongs.
tenantId	NUMBER NOT NULL	Unique identifier for a tenant
PRIMARY KEY(CHILDGROUP,PARENTGROUP, TENANTID)		A group can belong to multiple other groups

FOREIGN KEY (tenantId) references Tenant(tenantId)

Groups

This table represents user groups.

Column Name	Types	Properties	Remarks
groupName	NVARCHAR2(256) NOT NULL		The name of the user group.
groupDescription	NVARCHAR2(256) NULL		Detailed information about the user group.
readOnly	NUMBER NOT NULL		Specifies whether the user group can be removed from Interstage BPM.
tenantId	NUMBER NOT NULL		Unique identifier for a tenant
PRIMARY KEY(GROUPNAME, TENANTID)			Each group is identified by its name and tenant ID.

FOREIGN KEY (tenantId) references Tenant(tenantId)

History

The History table maps an event in Interstage BPM. Since every action performed within Interstage BPM is an event, this table constitutes the exact state of the Interstage BPM system at all times. Each row in the History table represents an Interstage BPM event.

Column Name	Types	Properties	Remarks
historyId	NUMBER NOT NULL		Each event is assigned a unique identifier.
eventCode	NUMBER NOT NULL	0=Start (default) 1=Activate 2=MakeChoice 3=Accept 4=Decline 5=Reassign 6=Exit 7=CreateSubProcess 8=SuspendWorkItem 9=ResumeWorkItem	Each code uniquely identifies a separate event.
eventType	NVARCHAR2(256) NOT NULL		Each event type along with some relevant data (all eventTypes are defined in metamodel: WFELEMENT).
eventData	BLOB NULL		Extended data about the event (Future expansion).
createdTime	DATE NOT NULL		The time the event was created.
responsible	NVARCHAR2(256) NOT NULL		The user responsible for this event.
isHandled	NUMBER NOT NULL	0=notHandled 1=handled 2=ignored 3=Error 4=audit	The state of the event.
producerType	NUMBER NOT NULL	0=ArrowType 3=ActivityType 7=ProcessType 15=TimerType	The element type of the producer of the event.
producerId	NUMBER NOT NULL		The identifier of the producer.

Column Name	Types	Properties	Remarks
consumerType	NUMBER NOT NULL	0=ArrowType 3=ActivityType 7=ProcessType	The element type that the event is intended for.
consumerId	NUMBER NOT NULL		The identifier of the consumer of the event.
processInstancelId	NUMBER NOT NULL		The identifier of the process instance which owns the event.
serverName	NVARCHAR2(64) NULL		The name of the server for which these events are generated and handled.
applicationContainerId	NUMBER NOT NULL		Unique identifier of the application that contains this event
PRIMARY KEY(HISTORYID)			Each event is distinguished by its unique identifier.

FOREIGN KEY (processInstancelId) references ProcessInstance(processInstancelId)

IBPMProperties

This table stores configuration parameters of the Interstage BPM Server.

Column Name	Types	Remarks
propertyKey	NVARCHAR2(2000) NOT NULL	Name of the configuration parameter.
propertyValue	NVARCHAR2(2000) NULL	Value of the configuration parameter.
tenantId	NUMBER NOT NULL	Unique identifier of a tenant
PRIMARY KEY(TENANTID,PROPERTYKEY)		Each configuration parameter is identified by its unique key, which is the parameter's name.

FOREIGN KEY (tenantId) references Tenant(tenantId)

JsPiHandle

This table holds the process handles to be passed to the JavaScript engine.

Column Name	Types	Remarks
id	NUMBER NOT NULL	The identifier of the process instance.

Column Name	Types	Remarks
longRaw	BLOB NOT NULL	The handle of the process instance.
PRIMARY KEY(ID)		Each process instance is identified by its unique identifier.

FOREIGN KEY (id) references ProcessInstance(processInstanceId)

KeyPerfIndicators

This table stores Key Performance Indicator information.

Column Name	Types	Properties	Remarks
kpiId	NUMBER NOT NULL		For any created KPI, a unique ID will be assigned in order to identify the KPI.
kpiName	NVARCHAR2(64) NOT NULL		Name for the newly created KPI.
description	NVARCHAR2(256) NOT NULL		Description of the KPI.
targetValue	NUMBER NOT NULL		The initial expected value for this KPI.
displayType	NUMBER NOT NULL	0 = Meter	Based on this value, a KPI will be displayed on a Dashboard in a particular shape. Currently, only "Meter" is supported.
kpiDisplay	NUMBER NOT NULL	0 = KPI will not appear 1 = KPI will appear	A value which decides whether to show this KPI on the Dashboard view.

Column Name	Types	Properties	Remarks
kpiScope	NUMBER NOT NULL	0 = System 1 = Process 2 = Activity	This column stores the value for the selected scope for this KPI. Currently, there are 3 different types of KPI: "System": All the current activities and processes in the IBPM engine will be measured. "Process": All the processes for a given process definition will be measured. "Activity": All the activities for a selected activity in the process definition will be measured.
processDefinitionId	NUMBER NOT NULL		This column stores the process definition ID used to measure the KPI for the "Process" or "Activity" scope.
activityDefinitionId	NUMBER NOT NULL		This column stores the activity definition ID used to measure the KPI for the "Activity" scope.

Column Name	Types	Properties	Remarks
kpiMeasure	NUMBER NOT NULL	0 = Wait Time 1 = Amount Waiting 2 = Average Cycle Time	This column is used to store the type of measure for the selected KPI scope. The KPI value will be computed based on the measure selected for a given KPI scope. Currently, there are 3 types of KPI measures: "Wait Time": The difference between the time the process instance or activity is created and the current time. "Amount Waiting": The number of process instances or activities currently running for a selected process definition or activity. "Average Cycle Time": The average time take to close all the running process instances or activities for a selected process definition or activity.
PRIMARY KEY(KPIID)			Each KPI is identified by its unique identifier.

MaxId

This table contains the next available identifier to be used.

Column Name	Types	Properties	Remarks
objectType	NVARCHAR2(64) NOT NULL	ActivityDefinition ActivityInstance ActivityTimer ActivityType ArrowDefinition ArrowInstance ArrowType Folder FolderFilter History ProcessDefinition ProcessInstance ProcessTimer ProcessType ServerTimer TimerInstance TimerType WorkItem	The type of element. Note: Only the ArrowType row is used to assign ids for all the Interstage BPM elements.

Column Name	Types	Properties	Remarks
nextId	NUMBER NOT NULL		The next identifier for the element type.
PRIMARY KEY(OBJECTTYPE)			Each type of object is distinguished by its unique type and the identifiers assigned to any two elements in Interstage BPM are always unique.

ProcDefAccess

This table represents the internal structure of the process definition.

Column Name	Types	Remarks
id	NUMBER NOT NULL	The identifier of the process definition.
longRaw	BLOB NOT NULL	The internal structure representing the process definition.
PRIMARY KEY(ID)		Each process definition is distinguished by its identifier.

FOREIGN KEY (id) references ProcessDefinition(processDefinitionId)

ProcessDataSet

This table stores the values of worklist UDAs.

Column Name	Types	Remarks
processInstanceId	NUMBER NOT NULL	The identifier of the process instance whose data element values are being represented.
longRaw	BLOB NULL	The data associated with this process instance.
workItemUdas	VARCHAR2(4000) NULL	Summary of all UDA allocations.
PRIMARY KEY(PROCESSINSTANCEID)		All the process data set values for a process instance are distinguished by the identifier of the process instance.

FOREIGN KEY (processInstanceId) references ProcessInstance(processInstanceId)

ProcessDataSetDefinition

This table represents the data set definitions associated with each process definition.

Column Name	Types	Remarks
name	NVARCHAR2(64) NOT NULL	The name of the data element.
processDefinitionId	NUMBER NOT NULL	The identifier of the process definition with which it is associated.
type	NUMBER NOT NULL	The type of the data element.
attributes	NUMBER NOT NULL	The attributes of the data element.
cubeNames	NVARCHAR2(256) NULL	The cube name of the data element.
aggregates	NVARCHAR2(256) NULL	The aggregates of the data element.
id	NVARCHAR2(32) NOT NULL	The identifier of the data element.
PRIMARY KEY(NAME, PROCESSDEFINITIONID)		Each process data element is distinguished by it's name and the identifier of the process definition with which it is associated.

FOREIGN KEY (processDefinitionId) references ProcessDefinition(processDefinitionId)

ProcessDefinition

This table represents an Interstage BPM process definition.

Column Name	Types	Properties	Remarks
processDefinitionId	NUMBER NOT NULL		The identifier of the process definition.
label	NVARCHAR2(64) NOT NULL		The name of the process definition.
processTypeid	NUMBER NOT NULL		The identifier of the type of process instance that this process definition would be used to create.
templateIdentifier	NVARCHAR2(256) NULL		A user defined identifier which could be used to group families of process definitions based on business requirements.
owner	NVARCHAR2(64) NOT NULL		The name of the owner of the process definition.
title	NVARCHAR2(128) NULL		The title of the process definition, different from the name of the process definition.
description	NVARCHAR2(256) NULL		A detailed explanation of the process definition.

Column Name	Types	Properties	Remarks
state	NUMBER NOT NULL	0=Draft 1=Published 2=Private 3=Obsolete 4=Deleted	The state of the process definition.
processOwnerRole	NVARCHAR2(256) NULL		The role whose members are the valid owners of all process instances derived from this process definition.
majorVersion	NUMBER NULL	> 0	The major version of this process definition.
minorVersion	NUMBER NULL	0 (default) > 0	The minor version of this process definition.
parentVersion	NVARCHAR2(64) NULL		The version of the parent process definition, from which this process definition was copied (if from the same family).
creationTime	DATE NULL		The absolute time when the process definition was created.
organization	NVARCHAR2(256) NULL		The organization to which this process definition belongs (for future requirements).
sequenceId	NUMBER NOT NULL		Every change on this process definition is tracked using a running number in this column.
longRaw	BLOB NULL		The data associated with this process definition.
flags	NUMBER NULL		An optimization parameter recording the presence of various scripts for this process definition.
versionComment	NVARCHAR2(256) NULL		A detailed explanation of why a new version was required.

Column Name	Types	Properties	Remarks
applicationContainerId	NUMBER NOT NULL		Unique identifier for the application that contains this process definition
PRIMARY KEY(PROCESSDEFINITIONID)			Each process definition is distinguished by it's unique identifier.
priority	NUMBER NOT NULL		The priority of the process definition. This will be the default priority of process instance.

FOREIGN KEY (applicationContainerId) references WorkflowApplication(applicationContainerId)

ProcessDefinitionVersion

This table represents version information for each family of process definition.

Column Name	Types	Properties	Remarks
label	NVARCHAR2(64) NOT NULL		The name of the process definition family.
publishedProcessDefinitionId	NUMBER NOT NULL		The identifier of the published process definition in the family.
latestMajorVersion	NUMBER NOT NULL	>0	The major version of the latest process definition in the family.
latestMinorVersion	NUMBER NOT NULL	>0	The minor version of the latest process definition in the family.
latestProcessDefinitionId	NUMBER NOT NULL		The identifier of the latest process definition in the family.
applicationContainerId	NUMBER NOT NULL		Unique identifier for the application that contains this process definition
PRIMARY KEY(APPLICATIONCONTAINERID, LABEL)			Each family of process definitions is distinguished by its name and the application it belongs to.

FOREIGN KEY (applicationContainerId) references WorkflowApplication(applicationContainerId)

ProcessInstance

This table represents an Interstage BPM process instance.

Column Name	Types	Properties	Remarks
processInstanceId	NUMBER NOT NULL		The identifier of the process instance.
processDefinitionId	NUMBER NOT NULL		The identifier of the process definition from which this process instance was derived.
parentId	NUMBER NOT NULL		For a child process instance, this is the identifier of the parent process instance.
state	NUMBER NOT NULL	0=PisOpen 1=PisNotRunning 2=PisNotStarted 3=Created 4=Initialized 5=Dormant 6=Locked 7=PisRunning 8=PisClosed 9=PisCompleted 10=PisError 11=PisAborted 12=PisSuspend	The state of the process instance.
initiator	NVARCHAR2(256) NOT NULL		The person responsible for starting the process instance.
priority	NUMBER NOT NULL	0=PRIORITY_LOW 8=PRIORITY_MEDIUM 16=PRIORITY_HIGH	The priority of the process instance.
createdTime	DATE NOT NULL		The absolute time when the process instance was first created.
label	NVARCHAR2(64) NULL		The name of the process instance.
title	NVARCHAR2(128) NULL		The title provided to the process instance, different from the name of the process instance.
description	NVARCHAR2(256) NULL		A detailed explanation of the process instance.

Column Name	Types	Properties	Remarks
attachments	BLOB NULL		The attachment data associated with this process instance.
closedTime			The absolute time when the process instance was closed.
sequenceld	NUMBER NULL		Every change on this process instance is tracked using a running number in this column.
parentProcessURI	NVARCHAR2(2000) NULL		URI of the process definition this process instance is derived from.
DueDateExpireTime	DATE NOT NULL		Duedate for this Process Instance
PRIMARY KEY(PROCESSINSTANCEID)			Each process instance is distinguished by its unique identifier.

FOREIGN KEY (processDefinitionId) references ProcessDefinition(processDefinitionId)

ProcessInstanceOwner

This table represents the owner(s) for every Interstage BPM process instance.

Column Name	Types	Remarks
owner	NVARCHAR2(256) NOT NULL	The name of the owner of the process instance.
processInstancelld	NUMBER NOT NULL	The identifier of the process instance.
PRIMARY KEY(OWNER, PROCESSINSTANCEID)		There can be more than one owner for a given process instance.

FOREIGN KEY (processInstancelld) references ProcessInstance(processInstancelld)

ProcessTimerDefinition

This table represents the timer definitions associated with a process definition.

Column Name	Types	Remarks
timerId	NUMBER NOT NULL	The identifier of the process timer definition.
processDefinitionId	NUMBER NOT NULL	The process definition with which this timer is associated.

Column Name	Types	Remarks
label	NVARCHAR2(64) NULL	The name of the timer.
data	BLOB NULL	The data associated with this timer.
IsDueDate	NUMBER NULL	Specifies if this is a due date timer
PRIMARY KEY(TIMERID)		Each process timer definition is distinguished by it's unique identifier.

FOREIGN KEY (processDefinitionId) references ProcessDefinition(processDefinitionId)

ProclnstAccess

This table represents the internal structure of the process instance.

Column Name	Types	Remarks
id	NUMBER NOT NULL	The identifier of the process instance.
longRaw	BLOB NOT NULL	The internal structure representing the process instance.
PRIMARY KEY(ID)		Each process instance is distinguished by its identifier.

FOREIGN KEY (id) references ProcessInstance(processInstancelid)

Responses

Currently, this table is NOT used. This table may be used in the future to implement the different kinds of actions to be performed on a response.

Column Name	Types	Remarks
responselid	NUMBER NOT NULL	Unique ID for newly created responses.
thresholdId	NUMBER NOT NULL	Unique ID for a threshold for which this response is generated.
actionType	NUMBER NOT NULL	Different types of action that will be performed for this response. Currently not supported.
actionName	NVARCHAR2(64) NOT NULL	Name of the action to be performed for this response. Currently not supported.
actionDetails	NCLOB NOT NULL	Description of the action to be performed as part of the response.

Column Name	Types	Remarks
PRIMARY KEY(RESPONSEID)		Each response is distinguished by its identifier.

FOREIGN KEY (thresholdId) references Thresholds(thresholdId)

Tenant

This table stores information related to tenants

Column Name	Types	Remarks
tenantId	NUMBER NOT NULL	Unique ID for newly created tenant.
name	NVARCHAR2(64) NOT NULL	Name for newly created tenant.
description	NVARCHAR2(256) NULL	Description of the tenant
state	NUMBER NOT NULL	State of the tenant: 2: activated 1: deactivated
longRaw	BLOB NULL	
PRIMARY KEY(tenantId)		Each tenant is distinguished by its identifier.

Thresholds

This table stores information on the threshold which apply to a particular Key Performance Indicator.

Column Name	Types	Properties	Remarks
thresholdId	NUMBER NOT NULL		Unique ID for a newly created threshold.
thresholdType	NUMBER NOT NULL	0 = Initial Threshold 1 = Critical Threshold	Stores the value for the type of threshold for a given KPI. Currently, there are 2 types of threshold: "Initial Threshold": Used to trigger warning messages when the system reaches this threshold level. "Critical Threshold": Used to perform some action to make the system healthier again when the system reaches this threshold level.
description	NVARCHAR2(256) NOT NULL		Detailed information about this threshold.

Column Name	Types	Properties	Remarks
kpild	NUMBER NOT NULL		Unique ID of the KPI for which this threshold has been created.
thresholdValue	NUMBER NOT NULL		Actual value of the threshold, which defines the initial and critical regions for a given KPI.
processDefinitionId	NUMBER NOT NULL		The ID of the process definition that will be instantiated when the KPI reaches one of the thresholds.
alarmFrequency	NUMBER NOT NULL		Stores, in minutes, the value how frequently the process needs to be instantiated to take some action as it reaches the thresholds.
alarmTime	NUMBER NOT NULL		The actual time when this process will be instantiated to take some kind of action once it reaches the thresholds. Currently not used.
PRIMARY KEY (THRESHOLDID)			Each threshold is distinguished by its identifier.

FOREIGN KEY (kpild) references KeyPerfIndicators(kpild)

TimerInstance

This table represents an instance of a timer.

Column Name	Types	Properties	Remarks
timerInstanceid	NUMBER NOT NULL		The identifier of the timer instance.
timerDefinitionId	NUMBER NOT NULL		The identifier of the timer definition from which this instance was created.
realTimeInMillis	NVARCHAR2(64) NOT NULL		The absolute time when this timer will expire.

Column Name	Types	Properties	Remarks
deltaTimeInMillis	NVARCHAR2(64) NOT NULL		The relative time compared to the time of creation of this timer instance, after which this timer will expire.
timerTypeId	NUMBER NOT NULL		The identifier of the type of this timer {activity, process instance, server}.
eventType	NVARCHAR2(256) NOT NULL		The type of the event (TimerEvent).
eventCode	NUMBER NULL		The identifier of the event.
eventData	BLOB NULL		The data associated with this timer instance (for future expansion).
timerTimeStamp	DATE NULL		The time when this instance was created.
responsible	NVARCHAR2(256) NOT NULL		The person responsible for this timer.
isHandled	NUMBER NULL	0=notHandled 1=handled 2=ignored 3=Ehterror 4=audit 5=suspended 6=Analytics	The state of this timer.
producerType	NUMBER NULL	0=ArrowType 3=ActivityType 7=ProcessType	The Interstage BPM element type which generated this instance.
producerId	NUMBER NOT NULL		The identifier of the element that created this timer instance.
consumerType	NUMBER NULL	0=ArrowType 3=ActivityType 7=ProcessType	The Interstage BPM element type which will act upon this instance.
consumerId	NUMBER NOT NULL		The identifier of the element that will act upon this timer instance.

Column Name	Types	Properties	Remarks
processInstanceid	NUMBER NOT NULL		The identifier of the process instance with which this timer is associated.
serverName	NVARCHAR2(64) NULL		The name of the server for which this timer instance is generated and handled.
PRIMARY KEY(TIMERINSTANCEID)			Each timer instance is distinguished by its unique identifier.

FOREIGN KEY (processInstanceid) references ProcessInstance(processInstanceid)

TriggerDefinition

This table stores trigger definition information.

Column Name	Types	Properties	Remarks
id	NUMBER NOT NULL		Trigger definition ID
typeid	NUMBER NOT NULL	0 = Start Process 1 = Make Choice	Trigger type ID
processDefinitionId	NUMBER NOT NULL		The ID of the process definition containing the trigger.
activityDefinitionId	NUMBER NOT NULL		The ID of the activity definition containing the trigger. The value is -1 for process level triggers (e.g. start process trigger).
state	NUMBER NOT NULL	0 = Default 1 = Active 2 = Inactive	State of the trigger.
label	NVARCHAR2(64) NOT NULL		Name of the trigger
description	NVARCHAR2(256) NULL		Description text of the trigger
scripts	NCLOB NULL		Trigger script in XML format

Column Name	Types	Properties	Remarks
hint	NVARCHAR2(2000) NULL		Trigger hint stored in XML format. The trigger hint can be set in the trigger event panel. It contains the following items: <ul style="list-style-type: none"> - Event Type - Event Schema URL - Event Filter Expression
PRIMARY KEY(ID)			Each trigger is distinguished by its unique identifier.

FOREIGN KEY (processDefinitionId) references ProcessDefinition(processDefinitionId)

UserProfile

This table represents user preferences.

Column Name	Types	Properties	Remarks
userProfileId	NVARCHAR2(256) NOT NULL		The identifier of the user.
userProfile	BLOB NULL		The data associated with this user.
tenantId	NUMBER NOT NULL		Unique identifier for a tenant
PRIMARY KEY(USERPROFILEID, TENANTID)			Each Interstage BPM user's preference is distinguished by the user's unique identifier and tenant ID.

FOREIGN KEY (tenantId) references Tenant(tenantId)

UserToGroup

This table stores associations between users and user groups.

Column Name	Types	Remarks
userId	NVARCHAR2(256) NOT NULL	The identifier of the user.
groupName	NVARCHAR2(256) NOT NULL	The name of the group to which the user belongs.
tenantId	NUMBER NOT NULL	Unique identifier for a tenant

Column Name	Types	Remarks
PRIMARY KEY(USERID,GROUPNAME, TENANTID)		A user can belong to multiple groups.

FOREIGN KEY (tenantId) references Tenant(tenantId)

Users

This table stores user accounts.

Column Name	Types	Properties	Remarks
userId	NVARCHAR2(256) NOT NULL		The identifier of the user.
password	NVARCHAR2(2000) NOT NULL		The password of the user.
readOnly	NUMBER NOT NULL		Specifies whether the user can be removed from Interstage BPM.
tenantId	NUMBER NOT NULL		Unique identifier for a tenant
PRIMARY KEY(USERID, TENANTID)			Each user is distinguished by the user's identifier and tenant ID.

FOREIGN KEY (tenantId) references Tenant(tenantId)

WLUdaValues

This table stores the values of worklist UDAs. The table is used for filtering and sorting.

Column Name	Types	Properties	Remarks
processInstanceId	NUMBER NOT NULL		The identifier of the process instance.
udaName	NVARCHAR2(64) NOT NULL		The name of the UDA.
udaType	NUMBER NOT NULL	0 = BOOLEAN 1 = STRING 2 = INTEGER 3 = FLOAT 4 = LONG 8 = BIGDECIMAL 9 = DATE 11=XML	The data type of the UDA.

Column Name	Types	Properties	Remarks
bigdecimalValue	NVARCHAR2(256) NULL		The value of the UDA if the data type is BIGDECIMAL.
stringValue	NVARCHAR2(256) NULL		The value of the UDA if the data type is STRING.
intValue	NUMBER NULL		The value of the UDA if the data type is INTEGER.
longValue	NUMBER NULL		The value of the UDA if the data type is LONG.
dateValue	NUMBER NULL		The value of the UDA if the data type is DATE.
booleanValue	NUMBER NULL		The value of the UDA if the data type is BOOLEAN.
floatValue	NUMBER NULL		The value of the UDA if the data type is FLOAT.
udald	NVARCHAR2(32) NOT NULL		The identifier of the UDA.
xmlValue	XMLType NULL		The XML value of the UDA if it is a XML/custom UDA. To optimize the performance of search queries on XML/custom UDAs, this column needs to be indexed in accordance with the data stored and the queries that need to be executed. You need to create these indexes; the Interstage BPM database scripts do not do this. For databases that do not support XMLType column, this column is not required.
PRIMARY KEY(PROCESSINSTANCEID, UDANAME)			Each element is distinguished by its unique process instance identifier and name.

FOREIGN KEY (processInstanceid) references ProcessInstance(processInstanceid)

WorkItem

While an activity instance represents a single activity in a process, a work item is a user's representation of the activity instance. Every user that is a valid user for a given activity instance, gets his/her own private copy of the activity instance, which is the work item.

Column Name	Types	Remarks
workItemId	NUMBER NOT NULL	The identifier of the work item.
activityInstanceid	NUMBER NOT NULL	The identifier of the activity instance of which this work item is a user copy.
responsible	NVARCHAR2(256) NOT NULL	The user to which this work item belongs.
state	NUMBER NOT NULL	The state of the work item.
createdTime	DATE NOT NULL	The time when the work item was created.
priority	NUMBER NOT NULL	The priority of the work item.
label	NVARCHAR2(64) NOT NULL	The descriptive name of the work item.
processInstanceid	NUMBER NOT NULL	The identifier of the process to which the work item belongs.
choice	NVARCHAR2(64) NULL	In case of Voting Activity Nodes, this represents the choice made on the work item.
responsibleUser	NVARCHAR2(256) NULL	The user responsible for accept or start subprocess operations on the work item.
applicationContainerid	NUMBER NOT NULL	Unique identifier of the application that contains this work item
PRIMARY KEY(WORKITEMID)		Each work item is distinguished by the identifier of the work item.

FOREIGN KEY (processInstanceid) references ProcessInstance(processInstanceid)

WorkItemOperations

This table represents data for decline and read operations on a group work item.

Column Name	Types	Properties	Remarks
activityInstanceid	NUMBER NOT NULL		The identifier of the activity instance of which this group work item is a user copy.

Column Name	Types	Properties	Remarks
operator	NVARCHAR2(256) NOT NULL		The name of the user who performed the decline or read operation.
operation	NUMBER NOT NULL	1=read 2=declined	The operation performed on the group work item.
PRIMARY KEY(ACTIVITYINSTANCEID, OPERATOR)			Each group work item is distinguished by the unique identifier of the activity it belongs to and by its operator.

FOREIGN KEY (activityInstanceid) references ActivityInstance(activityInstanceid)

WorkflowApplication

This table stores the state of Workflow Applications.

Column Name	Types	Properties	Remarks
applicationId	NVARCHAR2(256) NOT NULL		The name of the Workflow Application.
applicationState	NUMBER NOT NULL		The state of the Workflow Application.
tenantId	NUMBER NOT NULL		Unique ID for newly created tenant.
applicationContainerId	NUMBER NOT NULL		The unique identifier for the application
ownerGroup	NVARCHAR2(200) NOT NULL		Name of the group that has access to this application
PRIMARY KEY(APPLICATIONCONTAINERID))			Each Workflow Application is identified by this unique identifier.

FOREIGN KEY (tenantId) references Tenant(tenantId)

Appendix B: Troubleshooting

B.1 Log File Information

If Interstage BPM does not seem to be working properly, check the following log files:

- `IBPMServer.log` - all errors from the server and the Interstage BPM adapters are logged in this file. This log file is often very helpful in troubleshooting. For example, it may indicate that the database server is down.
- `AnalyticsError.log` - all analytics errors are logged in this file.

These files are located at the following location on the Interstage BPM Server computer: `<Interstage BPM Server Installation Directory>/server/instance/default/logs`

B.2 Resolving Specific Error Situations

B.2.1 Interstage BPM Server Fails to Start

Check the `IBPMServer.log` in the `<Interstage BPM Server Installation Directory>/server/instance/default/logs` directory.

Look for	What to do
<pre>DbService : setConnection: Connection to database server failed. Is the database server running and reachable through the network? {ORA-01089: immediate shutdown in progress - no operations are permitted.</pre>	<p>Check if the database is running. Also check that you can access the database from the machine where the Interstage BPM Server is installed in case the database is running on a different machine. You can use <code>telnet <Database Server Hostname> <Port></code> from the server host machine to check that the connection to the database host/port can be established.</p>
<pre>LdapBroker : getContext: Could not create the directory services. {[LDAP: error code 49 - Invalid Credentials]} LdapBroker : getGroupMembersByDN: Could not retrieve the user groups. {Could not create the directory services. {[LDAP: error code 49 - Invalid Credentials]}} LdapBroker : Could not retrieve the user groups. {Could not create the directory services. {[LDAP: error code 49 - Invalid Credentials]}}</pre>	<p>Ensure that the user name/password as specified in the <code>LDAPAccessUserID / LDAPAccessUserPassword</code> parameters of the Interstage BPM Server are correct and you can login to your Directory Server using the above user name/password.</p>

Look for	What to do
<pre>getContext: Could not create the directory services. LdapBroker : getGroupMembersByDN: Could not retrieve the user groups. {Could not create the directory services. LdapBroker : Could not retrieve the user groups. {Could not create the directory services.</pre>	<p>Ensure that the LDAP Server is running on the port as specified in the <code>LDAPServer</code> parameter of the Interstage BPM Server. You can use <code>telnet ldapServerHostName port</code> from the server host machine to check that the connection to the host/port can be established.</p>
<pre>IflowStartup : @(Failed to execute the IBPM startup routine task)Unable to deliver the message for the requested eventClass. {javax.naming.ServiceUnavailableException: A communication failure occurred while attempting to obtain an initial context with the provider URL: "iiop://<ServerName>:<Ports>". Make sure that any bootstrap address information in the URL is correct and that the target name server is running. A bootstrap address with no port specification defaults to port 2809. Possible causes other than an incorrect bootstrap address or unavailable name server include the network environment and workstation network configuration.}</pre>	<p>This is because you installed WebSphere Application Server in a Cell (deployment manager and a managed node) environment, causing the <code>BOOTSTRAP_ADDRESS</code> port to be incorrect in some configuration files.</p> <ol style="list-style-type: none"> 1. Get the correct value of the <code>BOOTSTRAP_ADDRESS</code> port from the WebSphere Application Server Console (from Servers > Application Servers > <ServerName> > Ports). (For WebSphere 7.0, this path is Servers > Server Types > WebSphere Application Servers > <ServerName> > Ports) 2. Update the value of the <code>BOOTSTRAP_ADDRESS</code> port for the following entries in the <code>iflowClient.properties</code> file, as well as Interstage BPM properties in the database. (For steps to change the server properties, refer the <i>Interstage BPM Server Administration Guide</i>.) <ul style="list-style-type: none"> • JMSNamingProviderURL (in the format <code>iiop://<Host Name>:<BOOTSTRAP_ADDRESS></code>) • NamingProviderURL (in the format <code>iiop://<Host Name>:<BOOTSTRAP_ADDRESS></code>)

B.2.2 Error in IBPMServer.log

Check the `IBPMServer.log` in the `<Interstage BPM Server Installation Directory>/server/instance/default/logs` directory.

Look for	What to do
<pre>getGroupMembersByDN: Could not retrieve the user groups. {[LDAP: error code 32 - No Such Object]}</pre>	<p>Possible cause of this error: A user has been deleted from the Directory Server (LDAP Server) but the reference of it is still there in one of the groups.</p>

B.2.3 Timeout During JavaScript Execution

When executing large JavaScripts, the current transaction timeout (120 seconds) is insufficient for the following application servers:

- WebLogic Application Server
- WebSphere Application Server

Due to this setting, script execution may fail with a "transaction timeout".

Your application server administrator can increase the transaction timeout depending on your usage requirements, for example, to 200 seconds. This setting can be changed in the following location:

- WebLogic Application Server 9.2:

```
<BEA_HOME>/user_projects/domains/<Domain
Name>/config/config.xml/<jta>/<timeout-seconds>
```

- WebLogic Application Server 10.3.2:

```
<MW_HOME>/user_projects/domains/<Domain
Name>/config/config.xml/<jta>/<timeout-seconds>
```

- WebSphere Application Server:

In the WebSphere Console: **Servers** -> **ApplicationServers** -> **server1** (default name) -> **Container Services** -> **Transaction Services** -> **Total Transaction lifetime timeout**.

B.2.4 Failure in Writing to an Oracle Database

When the updating of an Oracle database table fails, for example, when you try to archive a process instance, check the Oracle alert log file located in the <Oracle Installation Dir>/admin/<DB instance name>/bdump directory, for example:

```
C:\ProgramFiles\Oracle\admin\orcl\bdump>alert_orcl.log
```

The following error may be observed:

```
{Database add/create request failed. {ORA-08103: object no longer exists}}
```

This failure may be due to the fact that the Datafile size reached the file size limit on the hard disk of the database server.

The system administrator of the database server needs to increase the file size on the database server hard disk.

B.2.5 Warning or Error Messages for Interstage Application Server

When Interstage BPM Server is running on Interstage Application Server, warning or error messages are sometimes logged to an event log or a syslog of the Operating System.

If any messages of Interstage Application Server are logged in container log files of Interstage BPM Server or Console work units at the same time when the warning or error messages are logged to an event log or a syslog, it is possible that they are caused by Interstage BPM. In this case, please refer *Contacting Your Local Fujitsu Support Organization* on page 114 and ask the Fujitsu Support Organization to investigate the problem.

However, if messages correspond to any of the following errors or warnings, it is not necessary to ask the Fujitsu Support Organization to investigate the problem:

Error/ Warning	Details
1.	<ul style="list-style-type: none"> • Message logged to an event log or syslog: od60002 • Message logged to an EJB container log of the Interstage BPM Server: IJServer21104 and IJServer21092 • Description of the message: A timeout is caused by the idle monitoring function for STATEFUL Session Beans and an EJB object in the Interstage BPM Server is automatically deleted by the Interstage Application Server. The message can be ignored because the Interstage BPM Server automatically creates the alternative EJB object.

B.3 Errors During Installation, Deployment and Configuration

This section lists several errors that could occur during the installation, deployment and configuration of Interstage BPM and describes the required action(s) to take:

Installation of IBPM fails when trying to install a new build

I	Cause	The build directory of the existing installed build was deleted, without un-installing the build or un-installation failed.

Action	<p>For Windows</p> <p>Manually delete the earlier build's registry-entry, as follows:</p> <ol style="list-style-type: none"> 1. Go to Start > Run, type <code>regedit</code>, click OK. 2. In the Registry Editor screen, go to HKEY_LOCAL_MACHINE > SOFTWARE > Fujitsu > Install > Interstage BPM Server . 3. Delete the Interstage BPM Server registry entry under Install key. 4. Go to HKEY_LOCAL_MACHINE > SOFTWARE > Microsoft > Windows > CurrentVersion > Uninstall > Interstage Business Process Manager xx.x. 5. Delete the Interstage Business Process Manager xx.x registry entry under Uninstall key. This will ensure complete deletion of the registry entry for Windows platform. <p>For Solaris</p> <p>Manually delete the Solaris package information, as follows:</p> <ol style="list-style-type: none"> 1. Open the Command Prompt window and run the command <code>pkginfo -l FJSVibpm</code> from any location of the Solaris machine, to check if the Solaris package information still exists. 2. If the Solaris package information is displayed, then delete the package information using the following steps: <ol style="list-style-type: none"> a. Create a file named ibpm.uninst under the /tmp location. b. Run the command <code>pkgrm FJSVibpm</code> to delete the Solaris package. c. Run the command <code>pkginfo -l FJSVibpm</code> once more, to ensure that the Solaris package has been deleted successfully. If no information is displayed, then it confirms that the Solaris package has been completely deleted from the Solaris platform. <p>For Linux</p> <p>Manually delete the RPM package information, as follows:</p> <ol style="list-style-type: none"> 1. Open the Command Prompt window and run the command <code>rpm -qi FJSVibpm</code> from any location of the Linux machine, to check if the RPM package still exists. 2. If the RPM package information is displayed, then delete the package information using the command <code>rpm -e FJSVibpm</code>. 3. Run the command <code>rpm -qi FJSVibpm</code> once more to ensure that the RPM package has been deleted successfully. If no information is displayed, then it confirms that the RPM package has been completely deleted from the Linux platform.
--------	---

The Interstage BPM installation program was unable to launch on Linux

I Cause	It is possible that some essential packages may not be installed on the Linux machine.
---------	--

Action	For details about mandatory packages for Linux, refer step 2 (about Linux) in section <i>Installing Interstage BPM</i> of the <i>Interstage BPM Installation Guide</i> . After installing mandatory packages, retry launching the Interstage BPM installation program for Linux.
--------	--

An error occurred during Interstage BPM database creation/update

I	Cause	One of the following values provided during deployment were wrong: <ul style="list-style-type: none"> Database Administrator user name Database Administrator password
	Action	Restore the database from the backup of the database made before deploying Interstage BPM. Run the Deployment Tool again and select Database Configuration on the Welcome screen. In this way, the database is configured without deploying Interstage BPM again.
II	Cause	One of the following values provided during deployment were wrong: <ul style="list-style-type: none"> Host name of the database server Database SID (database instance name) Database port
	Action	Restore the database from the backup of the database made before deploying Interstage BPM. Remove Interstage BPM from the application server and deploy it again using the Deployment Tool.
III	Cause	Database server is not running.
	Action	Start the database server. Run the Deployment Tool again and select Database Configuration on the Welcome screen. In this way, the database is configured without deploying Interstage BPM again.

An error occurred during the execution of `importAD.bat`

I	Cause	One of the following values provided during deployment were wrong: <ul style="list-style-type: none"> Active Directory Key Active Directory Organizational Unit
	Action	Remove Interstage BPM from the application server and deploy it again using the Deployment Tool.

B.4 Errors during Starting the Interstage BPM Server

The following tables explain the possible causes of errors during server startup and the appropriate action(s) to take:

Errors Pertaining to Active Directory

I	Cause	The Active Directory Server is remote and Active Directory is not running.
	Action	Start the Active Directory Server, and then start the Interstage BPM Server.
II	Cause	One of the following values provided during deployment was wrong: <ul style="list-style-type: none"> • User name for the Directory Service Login account • Password for the Directory Service Login account These values are used in the <code>importAD.bat</code> file as arguments of the <code>net user</code> command.
	Action	Remove Interstage BPM from the application server and deploy it again using the Deployment Tool.
III	Cause	Interstage BPM cannot connect to the Active Directory Server because one of the following values provided during deployment was wrong: <ul style="list-style-type: none"> • Active Directory Key • Active Directory Organizational Unit
	Action	Remove Interstage BPM from the application server and deploy it again using the Deployment Tool.

Errors Pertaining to Oracle Directory Server Enterprise Edition

I	Cause	Interstage BPM cannot connect to the LDAP Server because one of the following values provided during deployment was wrong: <ul style="list-style-type: none"> • LDAP Key • LDAP Organizational Unit
	Action	Remove Interstage BPM from the application server and deploy it again using the Deployment Tool.

Errors Pertaining to the Database

I	Cause	The Database Server is not running.
	Action	Start the Database Server, and then start the Interstage BPM Server.

Errors Pertaining to a Hostname Change

I	Cause	You changed the hostname of the computer where Interstage BPM Server has been installed. As the hostname occurs in the names and values of various configuration parameters of the Interstage BPM Server, the server cannot access its configuration settings.
---	-------	--

Action	<p>In the <code>IBPMProperties</code> table of the Interstage BPM database, make the following changes:</p> <ul style="list-style-type: none"> In the <code>PROPERTYKEY</code> column, update any parameter names that have the hostname in the suffix. These parameters have the format <code><PARAMETER_NAME>.<HOSTNAME></code> or <code><PARAMETER_NAME>.<HOSTNAME>.<SERVERNAME></code>. In the <code>PROPERTYVALUE</code> column, update any parameter values containing the hostname. <p>To update the <code>IBPMProperties</code> table, use the appropriate database commands or a database client software.</p>
--------	---

B.5 Contacting Your Local Fujitsu Support Organization

If you are unable to troubleshoot your problem:

- Set the `DebugLevel` parameter of the Interstage BPM Server to 2 using either of the following:
 - If you have Interstage BPM Console deployed, use the following steps:
 - Access the Tenant Management Console using the following URL:
`http://<Hostname>:<Port>/console/TenantManager.page`.
 - Log in as a Super User and click the **System Properties** button.
 - In **System Properties** pop-up, set the `DebugLevel` parameter to 2 and click **Save**.
 - If you do not have Interstage BPM Console deployed on your local system, use the export and import configuration scripts to set the `DebugLevel` parameter to 2. Refer the topic *Using the Configuration Export and Import Scripts* in *Interstage BPM Server Administration Guide* or *Interstage BPM Server and Console Installation Guide* for more information about using export and import configuration scripts.
- Replicate the actions that caused the error.
- Contact your local Fujitsu Support organization and provide the following information:

General Information

- Operating System
- Directory Service (type and version)
- Database server (type and version)
- JDK or JRE version
- Application server (type and version)
- Interstage BPM edition, version and build number
- Major problem area
- Priority of the issue
- Environment in which the problem occurs

Configuration Information

- The configuration file that you exported from the Interstage BPM Server

Log Files

- All log files from `<Interstage BPM Server Installation Directory>/server/instance/default/logs`

- When using Interstage Application Server:
 - On Windows: All log files from <Interstage Installation Directory>/J2EE/var/deployment/ijserver/<Your Work Unit>/log
 - On UNIX: All log files from /opt/FJSVj2ee/var/deployment/ijserver/<Your Work Unit>/log
- When using WebLogic 9.2: All log files from <BEA_HOME>/user_projects/domain/<Your Domain>/servers/AdminServer/logs
- When using WebLogic 10.3.2: All log files from <MW_HOME>/user_projects/domain/<Your Domain>/servers/AdminServer/logs
- When using WebSphere: All log files from <WebSphere Installation Directory>/profiles/<Your Application Server Profile>/logs/<Your Server>

OS System Logs

- The Windows event log that you obtain using the Windows Event Viewer
- Linux system logs stored in /var/log/messages
- Solaris system logs stored in /var/adm/messages

Problem Description

- Description of the steps you performed before the problem occurred
- Frequency with which the problem occurs

Problem Details

- The application program and its source code that caused the error
- The XPDL file of the process definition that caused the error
- Information about Java Actions, Timers and Agents defined in the process definition
- Screenshot of the process instance history if the process instance goes into error state
- Stack trace if any exception is displayed
You can obtain the stack trace by clicking **Details** on the error page displayed in the Interstage BPM Console.
- Screenshot of the exception wherever it is displayed
- Screenshot of the process instance (graphical view) if the process instance goes into error state or into an unexpected state
- Calendar files (*.cal) if timers are used
- The agentsConfig.xml file if agents are used

Glossary

ACID properties	A transaction is a set of actions that obeys the four so-called ACID properties: atomic, consistent, isolated, and durable.
Activity	The description of a task, logical step, or work to be performed in a process. An activity is represented by a work item.
Activity Node	A graphical representation of an activity .
Activity Time	The time it takes to perform a particular activity.
Agents	Components that asynchronously access systems external to Interstage BPM.
AND Node	A node that synchronizes multiple branches in a process.
Annotation	An addition to a process definition allowing for adding explanatory comments to the process definition.
API	Application Programming Interface. The interfaces and classes that programmers may use in their own customized applications to access the server.
ASAP	Asynchronous Service Access Protocol. ASAP is a communication protocol based on SOAP and is used to start, manage, and monitor long running services.
Arrow	A connector between nodes. Arrows guide the process flow from one node to another.
Assignee	The person(s) assigned to perform an activity.
Attachment	A document file generated by any application, which has been associated with a process.
BPR	Business Process Reengineering. The field of study which concentrates on how work may be redefined in terms of processes.
Business Calendar	A calendar that specifies working days and times.
Business Process	See <i>Process</i> .
Chained-Process Node	A node representing a complex task that can be accomplished independently from the tasks defined in the parent process definition.
Compensation Action	A Java Action that can be defined as compensation for a regular Java Action, e.g. for cleaning up the system and ensuring a consistent state of external systems involved in a transaction.
Complex Conditional Node	A Conditional Node where the condition is specified as a JavaScript expression.
Conditional Node	A node that directs the process flow along one of several branches, depending on specified criteria.
Database Action	A Java Action allowing for the interaction with external databases that are independent of Interstage BPM.
DB Node	A node that accesses an external database using JDBC.

Delay Node	A node that suspends process execution for a certain amount of time.
Directory Service (DS)	Repository for the entire network's authentication and configuration data. Provides access to services, file servers, databases, and other applications. User and application access to the repository is controlled.
Document Management System (DMS)	The system integrated with Interstage BPM which is used to store attachments, forms, etc. The DMS Adapter is the communication link between the DMS and Interstage BPM.
Due Date	Specifies when an activity is due to be completed once it has become active. A due date also specifies what will happen when it is reached and the activity has not been completed.
EJB	Enterprise JavaBeans.
Email Node	A node that sends out predefined emails.
Error Action	A Java Action that is used to handle specific errors on process definition level, on Remote Subprocess level, and on Java Action level.
Exit Node	A node that identifies the end of a process branch. A process definition has at least one Exit Node.
Form	An HTML or XML file which may be associated with an activity, process instance, or process definition. Forms can be created using Interstage BPM; their appearance can be modified using any XML or HTML editing tool.
Framework Adapter	The Framework Adapter, also called DD Adapter, connects the Directory Service and the Document Management System Adapters. The "DD" is short for "document" and "directory". It handles authentication of the user and manages a consistent user authentication to the Directory Services and Document Management System.
Groups	Sets of individuals who typically share common characteristics. Groups are defined in Interstage BPM's local group store, in a Directory Service or in both systems.
Groupware	A type of software, which facilitates collaboration.
GUI	Graphical User Interface.
Initiator	The person who starts a new process instance.
Integration Action	A Java Action allowing for accessing external functions from within a process definition.
Interstage BPM Console	User interface which allows a user to create process instances, process definitions and access and respond to work items. It is also used by Interstage BPM Super Users to administrate Interstage BPM.
Interstage BPM Form	An XML layout definition plus a Java adapter class from which an HTML file is generated. An Interstage BPM Form is created and designed using the Interstage BPM Form editor.
Java Action	A custom programmed component used for performing the same function several times.
LDAP	Lightweight Directory Access Protocol.

Naming Service	A service that allows clients to find objects based on names.
Node	A graphical representation of a step in a process. Interstage BPM supports different node types, e.g. Activity Nodes, AND Notes, Subprocess Nodes, Conditional Nodes.
No-Operation Action	A built-in Java Action that specifies no operation.
Notification Action	A Java Action allowing for notifying users on events related to process execution. Users can be notified by email, for example, that a process or a single activity has been started.
OnAbort Action	A Java Action that will be executed before a process instance is aborted.
OnResume Action	A Java Action that will be executed before a process instance is resumed.
OnSuspend Action	A Java Action that will be executed before a process instance is suspended.
OR Node	A node that splits process flow into multiple parallel branches.
Owner	See <i>Process Definition Owner</i> and <i>Process Instance Owner</i> .
Participant	A person involved in a process.
Process	A sequence of steps that are performed to reach a business goal. Processes are modeled in process definitions.
Process Definition	The representation of a business process in a form that supports automated manipulation. A process definition defines the behavior and properties of the process instances created from it including the flow of control within the process.
Process Definition Owner	The person who created (or last edited) the process definition.
Process Initiator	See <i>Initiator</i> .
Process Instance	Represents a single enactment of a specific process definition. The structure of a process instance is exactly the same as the structure of the process definition on which it is based.
Process Instance Due Date	Represents the due date for a process instance.
Process Instance Owner	By default, the owner of a process instance is the owner of the process definition from which the process instance was created.
Process Participant	See <i>Participant</i> .
Project	A container for process definitions, forms, simulation scenarios, attachments, etc. On file system level, a project corresponds to a folder.
QuickForm	A structured, field-based HTML file created using the Interstage BPM Studio.
Remote Subprocess Node	A node representing a subprocess that runs on a remote workflow server.
Role	The name of a person or group (for example, the Manager Role). Each task (activity) in a process is assigned to a role for completion. Roles

	are equivalent to groups, as defined in Interstage BPM's local group store or in a Directory Service.
Rule	Method used to determine choices on activities for which the rules are defined.
Server	In the Interstage BPM context, the component of the workflow management system installed on the computer where the workflow engine provides the run-time environment for a process.
Server Action	A Java Action allowing for interacting with the Interstage BPM Server.
Simulation Scenario	A defined setup for simulating the execution of a process definition on your local computer.
SOAP	Simple Object Access Protocol. SOAP is a standard communication protocol that allows one application to send an XML message to another application. It is used, for example, to access Web Services.
SQL	Structured Query Language.
Start Node	A node that identifies the beginning of a process. Every process definition has one and only one Start Node.
Subprocess Node	A node that represents a complex task. The details of that task are defined in another process definition.
SWAP	Simple Workflow Access Protocol. SWAP passes XML messages over HTTP between workflow servers.
Swimlane	Visual grouping of activities performed by the same Role.
Task	An activity in a process; it typically requires a human decision to be made.
Timer	Expires after a specified interval or at a specified time and date. Timers trigger certain actions when they expire.
User Defined Attribute (UDA)	Data that process participants need to access, modify, or add, such as customer data, order numbers etc. User Defined Attributes are specified in the process definition.
User Profile	User-specific configuration information. This includes information such as whether a users wishes to receive email notifications, email address, and default directory, etc.
Voting Activity Node	A node that allows users to work on an activity in collaboration with one another.
Voting Rule	Rule defined on a Voting Activity Node to determine the outcome of the vote.
Web Service Node	A node that retrieves data from a Web Service and makes it available for further processing.
Workflow	The sequence of activities within a business process.
Workflow Application	A process solution consisting of process definitions, forms, simulation scenarios, attachments, etc. Interstage BPM allows for the creation of Workflow Application projects having a predefined structure. Such

	applications can be deployed on an Interstage BPM server that can be accessed by Interstage BPM clients.
Workflow Server	An Interstage BPM component that provides the run-time environment for process instances.
Work Item	An activity in the worklist.
Worklist	The list of activities.
WSDL	Web Services Description Language. WSDL is an XML-based language that describes the Web Services an organization offers. It also describes how to access the Web Services.
XML Action	A Java Action that allows you to perform specific operations on UDAs of type XML, for example adding XML substructures, setting text or attribute values in XML, or extracting UDA values from XML data.
XPath	XML Path Language. XPath is a language for finding information in an XML document. It is used to navigate through elements and attributes.
XPDL	XML Process Definition Language

Index

A

About this manual, 9
AnalyticsError.log, 45, 72
Architecture, 12, 13
ASAP, 36
Asynchronous Service Access Protocol, 36

B

Backup, 72
Business Calendar, 38

C

CentraSite
 Integration, 17
Configuration export script, 29
Configuration import script, 29
Connectivity, 15
Custom EJB, 15

D

Database
 changing, 32
Database connectivity, 15
Directory Service
 changing, 32
Directory Service connectivity, 15
DMS Root directories, 34
DmsCollections.xml, 72

E

Enactment Engine, 14
External systems, 16

G

Glossary, 116
Group management, 15

I

IBPMServer.log, 52, 72
Interstage Analytics, 36

Interstage BPM

 Component architecture, 12, 13
 documentation list, 10
 Key features, 12
 Overview, 12
Interstage BPM Analytics, 16

J

Java Actions, 16
JDBC, 15

K

kpilistener.conf, 72

L

LDAP, 15

M

Model API, 16

P

Process Definition EJB, 14
Process Instance EJB, 14

S

Simple Workflow Access Protocol, 36
SWAP, 36

T

Tenant Management Console, 28
Troubleshooting, 110
 Interstage BPM Server startup, 112

U

User Agent EJB, 14
User management, 15

W

Web Services, 16