

Enhanced Support Facility 3.2 INSTALLATION GUIDE

for Oracle Solaris

The Customer acknowledges and agrees that the Product is designed, developed and manufactured as contemplated for general use, including without limitation, general office use, personal use, household use, and ordinary industrial use, but is not designed, developed and manufactured as contemplated for use accompanying fatal risks or dangers that, unless extremely high safety is secured, could lead directly to death, personal injury, severe physical damage or other loss (hereinafter "High Safety Required Use"), including without limitation, nuclear reaction control in nuclear facility, aircraft flight control, air traffic control, mass transport control, medical life support system, missile launch control in weapon system. The Customer, shall not use the Product without securing the sufficient safety required for the High Safety Required Use. In addition, Fujitsu (or its agents) shall not be liable against the Customer and/or any third party for any claims or damages arising in connection with the High Safety Required Use of the Product.

Preface

Purpose

This document describes the procedure for installing this product and performing the environment settings. This product supports the combination of the following machine models.

- Models
 - SPARC Enterprise T series
 - SPARC Enterprise M series

This product does not support the combination of the following machine models. For the following machines, please use Enhanced Support Facility attached to the device.

- Models
 - PRIMEPOWER1/100/200/250/400/450/600/650/800/850/900/1000/1500/2000/2500
 - GP7000F Model 200/200R/400/400R/400A/600/600R/1000/2000

Intended Readers

This document is intended for system administrators who use the Enhanced Support Facility. Readers of this document should understand computer network concepts and terminology and have basic knowledge of the system management of the Solaris OS.

Organization

This document is organized as follows:

Chapter 1 Program Components

Programs composing the system are described.

Chapter 2 Online Manuals

Online manuals related to this product are described.

Chapter 3 Operating Environment

Operational environment of this product is described.

Chapter 4 Restrictions and Notes

Restrictions and notes are described.

Chapter 5 Installation

Installation of this product is described.

Chapter 6 Extended Installation

Extended installation of this product is described.

Appendix

The Appendix explains supplementary items.

Trademark Acknowledgements

- UNIX is a registered trademark of The Open Group in the United States and other countries.
- Oracle and Java are registered trademarks of Oracle and/or its affiliates. Other names may be trademarks of their respective owners.
- Microsoft is a registered trademark of Microsoft Corporation in the United States and/or other countries.
- Adobe and Acrobat are trademarks or registered trademarks of Adobe System Incorporated in the United States and /or other countries.
- Netscape, Netscape Navigator and Netscape Communications are trademarks of Netscape Communications Corporation in the United States and in other countries.
- All SPARC trademarks are used under license from SPARC International, Inc. and are trademarks or registered trademarks of that company in the United States and other countries.
- SPARC64 is a trademark of SPARC International, Inc. in the United States and other countries and used under license.
- Other names may be trademarks of their respective owners.

COPYRIGHT

All Rights Reserved, Copyright (C) FUJITSU LIMITED 2006-2011

Notations Used

Oracle Solaris might be described as Solaris, Solaris Operating System, or Solaris OS.

Oracle VM Server for SPARC might be described as Logical Domains, or LDoms.

In this document, the following names, abbreviated names are used.

Manual names

- This manual itself is referred to as "this manual".
- Any manual for this product is sometimes referred to by omitting "Enhanced Support Facility" at beginning of the formal name and supported server models at the end of the formal name. "User's Guide for Machine Administration", or "User's Guide for REMCS" is one of such examples. Example: Enhanced Support Facility User's Guide for REMCS
--> User's Guide for REMCS

Abbreviation

In this document, the formal names of the products below are abbreviated as follows:

Formal name	Abbreviation
SPARC T3-1/T3-2/T3-4 SPARC Enterprise T1000/T2000/T5120/T5140/T5220/T5240/T5440	SPARC Enterprise T series
SPARC Enterprise M3000/M4000/M5000/M8000/M9000	SPARC Enterprise M series

In this document, abbreviated names are used for supported machine models.

The following shows the relation between the abbreviated names and platforms.

Model name	Abbreviation	Platform
SPARC T3-1/T3-2/T3-4	LE	ORCL,SPARC-T3-1 ORCL,SPARC-T3-2 ORCL,SPARC-T3-4
SPARC Enterprise T1000/T2000/T5120/T5140/T5220/T5240/T5440		SUNW, SPARC-Enterprise-T1000 SUNW, SPARC-Enterprise-T2000 SUNW, SPARC-Enterprise-T5120 SUNW,T5140 SUNW,SPARC-Enterprise-T5220 SUNW,T5240 SUNW,T5440
SPARC Enterprise M3000/M4000/M5000/M8000/ M9000	CW	SUNW, SPARC-Enterprise

Revision History

Edition	Date	Description
1-A	August 29, 2006	First Edition
1-B	January 31, 2007	Changed descriptions in Appendix D.1.3. C120-E315-01ENZ2 (B)
2	April 18, 2007	Added URL for the reference to manuals for SPARC Enterprise Server. Added the installation procedure from Patch CD-ROM. 5.2.3 5.3.5 6.5.5.2 Added the espatchadd(1M) command in Appendix A.4.
3	May 22, 2007	Manuals & Patches 3.0A20
4	March 07, 2008	Manuals & Patches 3.0A30 <ul style="list-style-type: none"> - 3.1 No3 SUNWfns and FJSVcpc are deleted. - Added SPARC Enterprise T5120/T5220. - Changed descriptions in Appendix C. - Added Logical Domain Manager.
5	April 15, 2008	Enhanced Support Facility 3.0.1 <ul style="list-style-type: none"> - Added SPARC Enterprise T5140/T5240.
6	June 05, 2008	Enhanced Support Facility 3.1 <ul style="list-style-type: none"> - Added SPARC Enterprise M3000. - Web-Based Admin View ,FJSVmasv.and FJSVapcwv are deleted.
7	May 24, 2009	Enhanced Support Facility 3.1 <ul style="list-style-type: none"> - Added SPARC Enterprise T5440.
8	February,18,2010	Manuals & Patches 3.1A10
9	December,16,2010	Enhanced Support Facility 3.1.1 <ul style="list-style-type: none"> - Effect of the change of name of Solaris. - Added Appendix B Messages. - Deleted PRIMEPOWER.
10	January,25,2011	Enhanced Support Facility 3.2 <ul style="list-style-type: none"> - Added SPARC T3-1/T3-2/T3-4.

Contents

Preface	2
Revision History	5
Contents	6
Chapter 1 Program Components	10
Chapter 2 Online Manuals	12
2.1 Manuals Related to Enhanced Support Facility	12
2.2 Referencing Methods	14
2.2.1. Using a PC	14
2.2.2 Using a Solaris OS	14
2.3 Printed Manual (Supplied with the Product)	14
Chapter 3 Operating Environment	15
3.1 Software Environment	15
3.1.1 Basic Software prerequisites	15
3.1.2 Software requirements	15
3.1.3 Excluded software	15
3.1.4 Patch requirements	15
3.1.5 Bundled Patches	16
3.2 Hardware Environment	17
3.3 Static Disk Requirements	17
3.3.1 Disk requirements	17
3.3.2 Work area requirements	17
3.4 Dynamic Disk Resources	18
3.4.1 Disk space requirements	18
3.5 Memory Requirements	19
3.6 Swap Space	19
Chapter 4 Restrictions and Notes	20
4.1 Restrictions	20
4.2 Cautions when Upgrading	20
4.2.1 User data compatibility	20
4.2.2 Environment definition file compatibility	20
4.3 Notes	21
Chapter 5 Installation	23
5.1 Models to be Installed	24
5.2 Installation Procedure	25
5.2.1 Important Notes Before the Installation	25
5.2.2 Installation time	25
5.2.3 Instructions	26
5.2.4 Messages appearing during installation	30
5.2.5 Environment setting after installation	32
5.2.6 Applying modifications	32
5.3 Update Installation	33
5.3.1 Important Notes Before the Update	33
5.3.2 Installation time	33
5.3.3 Checking the system environment	34
5.3.4 Saving the environment setting file	36
5.3.4.1 DR Command	36
5.3.4.2 SCF/SCSI Fault LED support option	36
5.3.4.3 Machine Administration/Remote Support	36
5.3.4.4 Auto Power Control System	36
5.3.5 Instructions	37
5.3.6 Messages appearing during installation	40

5.3.7 Restoring the environment settings file	42
5.3.7.1 DR Command.....	42
5.3.7.2 SCF/SCSI Fault LED support option	42
5.3.7.3 Machine Administration/Remote Support	42
5.3.7.4 Auto Power Control System.....	42
5.3.8 Environment setting after installation.....	43
5.3.9 Applying modifications	43
5.4 Removing Enhanced Support Facility.....	44
5.4.1 Important Notes Before the Removal	44
5.4.2 Removal of Software.....	45
5.4.3 Messages Display When Removing Software.....	48
5.5 About Oracle VM Server for SPARC/Logical Domains (LDoms).....	49
5.5.1 Flowchart of Building Oracle VM Server for SPARC/Logical Domains (LDoms) Environment	50
5.5.2 Building Procedure for the Enhanced Support Facility in the Control Domain	51
5.5.3 Building Procedure for the Enhanced Support Facility in the Guest Domain	51
5.5.4 Update Installation in Oracle VM Server for SPARC/Logical Domains (LDoms) Environment.....	52
5.5.4.1 Update Installation Procedure in the Control Domain Environment	52
5.5.4.2 Update Installation Procedure in the Guest Domain Environment	53
Chapter 6 Extended Installation	54
6.1 OS Upgrade Installation.....	54
6.1.1 Upgrade workflow	54
6.1.2 Saving the Enhanced Support Facility environment setting file.....	55
6.1.3 Uninstalling Enhanced Support Facility.....	55
6.1.4 Installing the OS.....	55
6.1.5 Installing Enhanced Support Facility	55
6.1.6 Restoring the environment setting file of Enhanced Support Facility	55
6.2 Custom JumpStart.....	56
6.2.1 Support environment.....	56
6.2.2 Procedure	56
6.2.2.1 Copying the DVD/CD images to directories on the installation server	56
6.2.2.2 Installation script for Enhanced Support Facility	57
6.2.2.3 Flowchart of Building Oracle VM Server for SPARC/Logical Domains (LDoms) Environment.....	58
6.2.2.4 Building Procedure for the Control Domain	58
6.2.2.5 Building Procedure for the Guest Domain	58
6.2.3 Notes	59
6.3 Flash Archive Installation.....	60
6.3.1 Procedure for creating a flash archive	61
6.3.1.1 Installing the OS.....	61
6.3.1.2 Installing Enhanced Support Facility	61
6.3.1.3 Creating a flash archive.....	62
6.3.1.4 Notes on creating a flash archive.....	62
6.3.2 Installation procedure using a flash archive	63
6.3.2.1 Custom jump installation using a flash archive	63
6.3.2.2 Installing a flash archive in the clone system	63
6.3.2.3 Flowchart of Building Oracle VM Server for SPARC/Logical Domains (LDoms) Environment	64
6.3.2.4 Building Procedure for the Control Domain	64
6.3.2.5 Building Procedure for the Guest Domain	64
6.3.3 Setting the Enhanced Support Facility environment after flash archive installation	65
6.3.4 Notes on flash archiving.....	66
6.4 Specifying a Component Group for Installation.....	68
6.4.1 Notes on using the component group specification option.....	68
6.4.2 Component groups	68
6.4.3 Specifying a component group for installation.....	69
6.4.3.1 Flowchart of Building Oracle VM Server for SPARC/Logical Domains (LDoms) Environment	71
6.4.3.2 Building Procedure for the Control Domain	71

6.4.3.3 Building Procedure for the Guest Domain	71
6.5 Solaris Live Upgrade.....	72
6.5.1 Upgrade Procedure.....	73
6.5.1.1 Preparation for creating "New Boot Environment" and confirming environment	74
6.5.1.1.1 Checking the system environment.....	74
6.5.2 Creating a New Boot Environment and Deleting Software.....	74
6.5.2.1 Creating and mounting a new boot environment.....	74
6.5.2.2 Saving the environment settings files.....	75
6.5.2.2.1 Package containing environment settings files.....	75
6.5.2.2.2 Saving environment settings files.....	75
6.5.2.3 Deleting the software from new boot environment	76
6.5.2.4 Unmounting the new boot environment	77
6.5.2.5 Removing the DVD/CD	77
6.5.3 Upgrading the Operating Environment	78
6.5.4 Installing Software	78
6.5.4.1 Mounting the new boot environment.....	78
6.5.4.2 Installing this software in the new boot environment.....	78
6.5.5 Restoring Environment Data in the New Boot Environment	81
6.5.6 Switching the Boot Environment	82
6.5.6.1 Unmounting the new boot environment	82
6.5.6.2 Switching the active boot environment	82
6.5.6.3 Starting the system in the new boot environment.....	82
6.6 Unified Installer	83
Appendix A Command Reference	84
A.1 esfadd (1M).....	84
A.2 esfrm (1M)	86
A.3 esfver (1M).....	88
A.4 esfpachadd (1M)	90
Appendix B Messages	91
B.1 esfadd(1M)	91
B.1.1 Notice Messages	91
B.1.2 Warning Messages	95
B.1.3 Error Messages	96
B.2 esfrm(1M).....	99
B.2.1 Notice Messages	99
B.2.2 Warning Messages	101
B.2.3 Error Messages	102
B.3 esfver(1M).....	104
B.3.1 Notice Messages	104
B.3.2 Warning Messages	106
B.3.3 Error Messages	107
B.4 esfpachadd(1M).....	108
B.4.1 Notice Messages	108
B.4.2 Warning Messages	110
B.4.3 Error Messages	111
Appendix C Component Programs by Model.....	113
Appendix D Troubleshooting	115
D.1 Resolution of problems which occur when package is installed.....	115
D.1.1 Resolution of problems which occur when package is installed (I).....	116
D.1.2 Resolution of problems which occur when package is installed (II).....	117
D.1.3 Resolution of problems which occur when package is installed (III).....	118
D.1.4 Resolution of problems which occur when package is installed (IV).....	119
D.1.5 Resolution of problems which occur when package is installed (V).....	120
D.2 Resolution of problems which occur when package was removed.....	121
D.2.1 Resolution of problems, which occurred when package was removed (I).....	121
D.2.2 Resolution of problems, which occurred when package was removed (II).....	122

D.3 When the patches fail to be applied..... 123

Appendix E Notes..... 124

E.1 Solaris network installation using DHCP service 124

Appendix F Mounting the DVD/CD..... 125

F.1 Using a built-in DVD/CD drive 125

F.2 Mounting a DVD/CD of an installation server..... 126

Chapter 1 Program Components

The programs that are components forming a system are called a package.

This software product consists of the components and packages listed in the following table.

For the program configuration of each model, see Appendix C, "Component Programs by Model".

Table 1-1 Component Programs List

No.	Component	Package	VL	Function
1	Enhanced Support Facility Information Management	FJSVbse	3.2	Installation management of Enhanced Support Facility.
2	IKPDR command	FJSVdropl	1.0	Dynamic Reconfiguration command (64 bit).
3	SCF/SCSI Fault LED support option	FJSVscfsc	1.0	The SCF/SCSI Fault LED support option is optional software that supports the command for accessing the RCI interface included in high-end and mid-range SPARC Enterprise Server models and the DISK hot swapping of SCSI DISK provided by Machine Administration.
4	Machine Administration	FJSVmadm	1.2.3	Machine Administration is software that supports repair work for any failure that occurs, by monitoring the status of main unit hardware.
		FJSVamadm	1.0.0	
		FJSVamcl	1.0.0	
		FJSVamle	1.0.0	
5	Remote Support	FJSVrlib	8.2.2	The REMote Customer Support system (REMCS) is a system that provides operational support to customers 24 hours a day and 365 days a year through connections between the customers' equipment and the REMCS Center via networks.
		FJSVragt	2.9	
		FJSVrmaos	2.9	
		FJSVrrda	2.9	
		FJSVracm	2.9	
		FJSVsirms	4.0	
		FJSVamrm	1.0	
		FJSVlrm	1.0	
6	Auto Power Control System	FJSVapcs	1.4.2	Automatic powering on or off of main cabinet power to a specified schedule.
7	Server Default Configuration	FJSVdef	1.4	Server Default Configuration provides a function for improving server maintainability.
		FJSVssf	3.0.1	
8	System Data Output Tool	FJSVsnap	2.6	Collects data regarding command execution results, files about hardware and software configurations, environment settings, logs, and operational status, then outputs the system information for system fault analysis to a tape unit, etc.
9	Crash Dump Assistant	FJSVdmp	1.6	During the creation of a crash dump file at system reboot, Crash Dump Assistant invokes the "System Data Output Tool" to save necessary system data for problem investigation.

No.	Component	Package	VL	Function
10	Auto Dump Analyze Tool	FJSVana	2.1	<p>During the creation of a crash dump file at system reboot, Crash Dump Assistant invokes the "System Data Output Tool" to save necessary system data for problem investigation.</p> <p>This package contains a tool named cocore that gathers files that are necessary for analysis.</p> <p>For details of cocore, see <code>/opt/FJSVana/doc/README.cocore(ja)</code>.</p>
11	System Parameter Diagnosis	FJSVparam	1.1	System Parameter Diagnosis detects and reports system settings that may interfere with normal operation of the Solaris OS, which may therefore change the settings.
12	HRM-S	FJSVhrmse	3.5.9	HardwareResourceMonitor (referred to as HRM, in this document) is a maintenance work support tool.
13	Tape Driver Configuration Tool	FJSVdcnf	1.2	Tape Driver Definition Setting Tool is a tool that automatically sets a tape driver definition for use of a tape device that requires the tape driver definition to be set.
14	Patch Information Collect Command	FJSVpmgc	1.1	Patch Version Information Collection Command is a tool that increases efficiency in a series of tasks including investigating whether patches have been applied, downloading patches, and applying patches.
15	Console flow control canceller	FJSVcflw	1.0	Console flow control canceller
16	UpdateAdvisor(Solaris OS)	FJSVupdta	1.7	UpdateAdvisor(Solaris OS) is a system tool designed to improve the patch management process.

Chapter 2 Online Manuals

2.1 Manuals Related to Enhanced Support Facility

These manuals are stored in both Enhanced Support Facility 3.2 DVD/CD and Manuals & Patches DVD/CD as PDF files.

The latest online manuals are included in the Manuals & Patches DVD/CD, therefore if the Manuals & Patches DVD/CD is accompanied, please refer to the manuals on it.

Table 2.1-1 Enhanced Support Facility-related Manuals List

No.	Manual title	File name	Explanation
1	Enhanced Support Facility 3.2 Installation Guide	install_guide_ome.pdf	Enhanced Support Facility installation procedure.
2	Enhanced Support Facility Update Information	update_ome.pdf	History of added or altered functions of each component.
3	Enhanced Support Facility Security System Building Guide	security_guide_ome.pdf	Information on the daemons and services supported by each component.
4	Enhanced Support Facility User's Guide	esfug_ome.pdf	Outline of the functions of individual components aggregated to Enhanced Support Facility.

The following manuals are user's manuals of individual components, and they are provided as separate volumes.

Table 2.1-2 Enhanced Support Facility User's Guide List

No.	Manual title	File name	Explanation
1	Enhanced Support Facility User's Guide for Machine Administration	madm_ome.pdf	Explains the functions and operation method of Machine Administration.
2	Enhanced Support Facility User's Guide for REMCS	remcs_ome.pdf	Explains the setting method for enabling the REMCS function and the procedure for collecting software investigation information.
3	Enhanced Support Facility User's Guide for Dynamic Reconfiguration	dr_ome.pdf	Provides details of the Dynamic Reconfiguration (DR) function and DR command interface.
4	Enhanced Support Facility User's Guide for Dynamic Reconfiguration I/O device	drio_ome.pdf	Explains the procedure for hot swapping and hot expansion of file-related PCI cards and network-related PCI cards using the Dynamic Reconfiguration function.
5	System Parameter Diagnosis 1.1 User's Guide	param_ome.pdf	Explains the system parameter diagnosis for detecting system-setting errors.
6	Tape driver configuration tool 1.2 Update2 User's Guide	dcnf_ome.pdf	Explains the function that automatically sets a tape driver definition.
7	Enhanced Support Facility User's Guide for System Data Output Tool Features	fjsnap_ome.pdf	Provides an outline of the function of the system information collection tool and explains how to operate the tool.

No.	Manual title	File name	Explanation
8	Enhanced Support Facility User's Guide for Machine Administration Automatic power control function (Supplement edition)	apcs_ome.pdf	Explanation of Automatic power control function to SPARC Enterprise M series.

Each manual is deployed in the following directories on the Enhanced Support Facility 3.2 DVD/CD and Manuals & Patches DVD/CD.

English manuals: /cdrom/cdrom0/manual.pdf/english/

2.2 Referencing Methods

The Enhanced Support Facility 3.2 DVD/CD and Manuals & Patches DVD/CD include manuals formatted in PDF.

The latest version of Adobe(R) Reader(R) or Acrobat Reader from Adobe Systems Incorporated is required for viewing a PDF file.

Download the latest version of Adobe(R) Reader(R) or Acrobat Reader appropriate to your environment from the Adobe Systems Incorporated's Web site.

2.2.1. Using a PC

1) Insert the DVD/CD disk into the DVD/CD drive.

2) Use Acrobat Reader to open the file to be referenced.

Example: Referencing the Installation Guide (English)

```
DVD/CDdrive:\MANUAL.PDF\ENGLISH\INSTALL_GUIDE_OME.PDF
```

2.2.2 Using a Solaris OS

1) Insert the DVD/CD disk into the DVD/CD drive.

2) Use Acrobat Reader to open the file to be referenced.

Example: Referencing the Installation Guide (English)

```
/cdrom/cdrom0/manual.pdf/english/install_guide_ome.pdf
```

2.3 Printed Manual (Supplied with the Product)

None

Chapter 3 Operating Environment

To use this software, the following software and hardware prerequisites must be satisfied.

3.1 Software Environment

3.1.1 Basic Software prerequisites

For SPARC Enterprise, no Basic Software is required.

3.1.2 Software requirements

None

3.1.3 Excluded software

None

3.1.4 Patch requirements

None

3.1.5 Bundled Patches

The following patches are applied to Enhanced Support Facility 3.2 automatically.

Machine model names in the following table are abbreviated names. For more information, please refer to "Notations Used" in "Preface".

Table 3.1.5-1 Table of Enhanced Support Facility 3.2 patches

Patch-ID	Package Name	Abbreviation	
		LE	CW
914587-02	FJSVdropl	-	O
914590-03	FJSVscfsc	-	O
914701-02	FJSVrlib	O	-
914603-07	FJSVlrm	O	-
915009-02	FJSVmadm	O	-
914601-04	FJSVmadm	O	-
914604-11	FJSVamle FJSVmadm	O	-
914527-14	FJSVamadm	-	O
914588-01	FJSVamrm	-	O
914585-02	FJSVsirms	O	O
914429-01	FJSVdef	O	O
914679-04	FJSVsnap	O	O
914192-03	FJSVparam	O	O
914644-03	FJSVdenf	O	O

3.2 Hardware Environment

Any of the following hardware is required to use this product.

- Models
- SPARC Enterprise T series
- SPARC Enterprise M series

This product does not support the combination of the following machine models. For the following machines, please use Enhanced Support Facility attached to the device.

- Models
- PRIMEPOWER1/100/200/250/400/450/600/650/800/850/900/1000/1500/2000/2500
- GP7000F Model 200/200R/400/400R/400A/600/600R/1000/2000

3.3 Static Disk Requirements

The disk space requirements for this software are shown below.

3.3.1 Disk requirements

The following tables list the disk space requirements for installing this software. If disk space is insufficient, expand the size of the appropriate file systems.

Table 3.3.1-1 Disk Capacity List

No.	Directory	Disk space requirement (in Mbytes)
		Solaris 10
1	/	6.5
2	/usr	1.5
3	/var	68.5
4	/export/home	0
5	/opt *	250.0

*) Do not attempt to install this software in a directory other than "/opt".

3.3.2 Work area requirements

When you install this software with the following installation procedures, additional disk workspace as shown below might be required.

Table 3.3.2-1 Working Area List

No.	Via spool directory	Directory	Disk space requirement (in Mbytes)	Remarks
1	No	/tmp	0.5	

3.4 Dynamic Disk Resources

The dynamic disk space requirements for this software are shown below.

3.4.1 Disk space requirements

When you use this software for the following operations, additional disk space might be required in the directories listed in Section 3.3, "Static Disk Requirements". If disk space is insufficient, expand the size of the appropriate file systems as shown.

Abbreviated names of machine models are used in the table below. For more information, please refer to "Notations Used" in "Preface".

Table 3.4.1-1 Disk Capacity List

No.	Component	Directory	Additional disk space requirement (in M bytes)	Operation
1	IKPDR Command	/var/opt/FJSVdr	1.0	
		/opt	0.15	
		/etc/opt	0.07	
2	Machine Administration	/var	4.3	Operation log, temporary file
3	System Parameter Diagnosis	/var	2.0	Log, backup
4	Tape Driver Configuration Tool	/var	0.3	Log information
5	System Data Output Tool	Location that a user specified or /var/tmp	10.0	When System Data Output Command is executed

3.5 Memory Requirements

The following table shows the memory required when you use this software for the following operations

Table 3.5-1 Memory Capacity List

No.	Component	Memory required (unit: MB)	Operation
1	Tape Driver Configuration Tool	1.1	During command execution
2	System Data Output Tool	40.0	When System Data Output Command is executed

3.6 Swap Space

The following shows the swap space requirement of this software in normal operation.

The swap space requirement depends on the system situation.

The total swap space can be calculated as the sum of each individual swap space requirement.

If the swap space provided by the system is insufficient, it must be expanded.

Table 3.6-1 Swap Capacity List

No.	Component	Swap capacity (unit: Mbytes)	Description
1	IKPDR Command	0.1	Executing Dynamic Reconfiguration.
2	Machine Administration	46.7	Standard use (daemon, GUI menu)
3	Remote Support	4.2	Standard use (daemon)
4	Tape Driver Configuration Tool	1.1	During command execution

Chapter 4 Restrictions and Notes

4.1 Restrictions

None

4.2 Cautions when Upgrading

The cautions when upgrading from the previous level to this software level are described below.

4.2.1 User data compatibility

There are no user data incompatibilities between this version and the previous version of this software.

4.2.2 Environment definition file compatibility

There are no environment definition file incompatibilities between this version and the previous version of this software.

4.3 Notes

The following notes apply to the installation of this software.
Refer also to Appendix E, "Notes".

Table 4.3-1 Notes List

No.	Component	Description
1	Enhanced Support Facility Information Management	<p>This product does not support the following machine models.</p> <p>For the following machines, please use Enhanced Support Facility attached to the device.</p> <ul style="list-style-type: none"> - PRIMEPOWER1/100/200/250/400/450/600/650/800/850/900/1000/1500/2000/2500 - GP7000F Model 200/200R/400/400R/400A/600/600R/1000/2000 <p>Install this product in the global zone.</p> <p>This product cannot be installed in the non-global zone.</p> <p>If esfadd is executed in the non-global zone, it terminates with the following message:</p> <p>esfadd: Error: This product cannot be installed in the non-global zone.</p> <p>If esfadd -c is executed in the non-global zone, it terminates with the following message:</p> <p>grep: /var/sadm/system/admin/INST_RELEASE cannot be opened.</p> <p>esfadd: Error: The operating system does not support this product.</p> <p>You cannot install this software onto the System Management Console of PRIMEPOWER900/1500/2500.</p> <p>Notes when using Oracle VM Server for SPARC/Logical Domains(LDoms) are available.</p> <p>Please refer to "4.2 Notes on Oracle VM Server for SPARC/Logical Domains(LDoms)" in "Enhanced Support Facility User's Guide".</p>
2	SCF/SCSI Fault LED support option	The SCF/SCSI Fault LED support option is a dedicated function for SPARC Enterprise Server. This component cannot be installed on any unit other than the above.
3	Remote Support	<p>Under the following machine models, There is a note when using DHCP service.</p> <ol style="list-style-type: none"> 1) In case of SPARC Enterprise T series. <p>Please refer to "Appendix E.1 Solaris network installation using DHCP service".</p>
4	Tape Driver Configuration Tool	<p>When one of the following tape drives is connected during installation, this product automatically adds the tape driver definition to /kernel/drv/st.conf if that, applicable definition has not been included before:</p> <p style="padding-left: 40px;">DDS4 : PW023DT3, PW023DT4, PW0G3DT1</p> <p style="padding-left: 40px;">DAT72: PW023DT5, PW023DT6, PW0R3DT3, PW0G3DT2</p>
5	Auto Power Control System	<p>Under the following conditions, messages are output to the console, but you can ignore the messages.</p> <ol style="list-style-type: none"> 1) In case of SPARC Enterprise M3000/M4000/M5000/M8000/M9000. 2) In case of rebooting in single user mode. <p>FJSVapcs: cron may not be running - call your system administrator</p> <p>FJSVapcs: Cannot register a cron job.</p>

No.	Component	Description
6	FJSVgid FJSVulsa	<p>The following drivers have not been bundled with Enhanced Support Facility 3.1.1 or newer any longer.</p> <ul style="list-style-type: none"> - FUJITSU PCI GigabitEthernet - FUJITSU ULTRA LVD SCSI Host Bus Adapter Driver <p>If you need the drivers, please get it by referring to CD-ROM attached to the FUJITSU PCI card or the download page of FUJITSU website.</p>

Chapter 5 Installation

This software can be installed in one of two modes: basic installation and extended installation.

Installation

Installation in this mode requires no option commands.

This chapter explains the following procedures:

New installation (5.2, "Installation Procedure")

Update installation (5.3, "Update Installation")

Deletion (5.4, "Removing Enhanced Support Facility ")

Installation in Oracle VM Server for SPARC/Logical Domains (LDoms) (5.5 "About Oracle VM Server for SPARC/Logical Domains (LDoms)")

Oracle VM Server for SPARC/Logical Domains (LDoms) is a virtualization technology provided by Oracle and is the function enabling you to run two or more different operating systems on one computer by installing Logical Domains Manager.

Logical Domains Manager can be installed on SPARC T3-1/T3-2/T3-4 ,SPARC Enterprise T5120/T5140/T5220/T5240/T5440.

For more information on the Logical Domains Manager, control domain, guest domain, please refer to "SPARC Enterprise Oracle VM Server for SPARC Guide".

Extended installation

Installation in this mode requires option commands.

Chapter 6 explains the following procedures:

Table 5-1 Advanced Installation List

No.	Installation method	Description	Remarks
1	OS Upgrade Installation	Save the Enhanced Support Facility environment before OS upgrade installation, install Enhanced Support Facility after OS upgrade installation, and then restore the Enhanced Support Facility environment.	See Section 6.1, "OS Upgrade Installation".
2	Custom JumpStart	After Solaris OS installation, install Enhanced Support Facility using a finish script.	See Section 6.2, "Custom JumpStart".
3	Flash Archive Installation	Create a flash archive to which "Solaris OS + (PTF) + Enhanced Support Facility" is applied, and install this software in each set of platform and Solaris OS.	See Section 6.3, "Flash Archive Installation".
4	Component Group Specified Installation	By specifying component groups during installation, packages to be installed can be restricted according to system requirements.	See Section 6.4, "Specifying a Component Group for Installation".
5	Solaris Live Upgrade	Save the Enhanced Support Facility environment before Solaris Live Upgrade, install Enhanced Support Facility after Solaris Live Upgrade, and then restore the Enhanced Support Facility environment.	See Section 6.5, "Solaris Live Upgrade".
6	Unified Installer	Use the unified installer of Systemwalker Resource Coordinator to automatically install the Solaris OS and Enhanced Support Facility.	See Section 6.6, "Unified Installer".

5.1 Models to be Installed

Use the DVD/CD drive equipped in the main unit to install the Enhanced Support Facility.

SPARC EnterpriseT1000 are not equipped with internal DVD/CD.

You need to install Enhanced Support Facility using the DVD/CD drive of the installation server.

- For initial installation, see Section 5.2, "Installation Procedure".
- If an old version of Enhanced Support Facility is already installed, see Section 5.3, "Update Installation."
- The Logical Domains Manager can be installed on SPARC T3-1/T3-2/T3-4, SPARC Enterprise T5120/T5140/T5220/T5240/T5440 to install Enhanced Support Facility in the guest domain, you need to network mount the DVD/CD drive of the installation server.

To use the DVD/CD drive of the installation server, please refer to "Appendix F Mounting the DVD/CD".

5.2 Installation Procedure

5.2.1 Important Notes Before the Installation

Table 5.2.1-1 Important Notes List

Single user mode	You need to install this product in single user mode.
Mounting the file system	This product is installed into "/opt". If "/opt" is another file system, "/opt" is not mounted in single user mode. Therefore please be sure to mount "/opt" with mountall -l before installing this product.
User authority	<p>To install this software, cron must be set up for execution with root and adm user authority. At installation, "/etc/cron.d/cron.allow" must be set so that users with root or admin authority can use cron. By default, these users are permitted to use cron and, therefore, the setting need not be changed unless the corresponding permissions were changed.</p> <p>Also, for the login shell of root users and adm users written in the "etc/passwd" file, set a shell program that can be used as a command interpreter (for example, /sbin/sh). If you set a shell program that cannot be used as a command interpreter (for example, /bin/false), Enhanced Support Facility installation will fail.</p>

5.2.2 Installation time

It takes about 15 minutes to install this software. Note that this installation time excludes any time for rebooting, as that depends on the system configuration.

5.2.3 Instructions

- 1) Insert Enhanced Support Facility 3.2 DVD/CD into the DVD/CD drive.
- 2) Type "su" at the shell prompt.

```
% su <Return>
```

- 3) Enter the root (superuser) password.

```
Password: password <Return>  
#
```

- 4) Enter the OpenBoot environment.

```
# /usr/sbin/shutdown -y -g0 -i0 <Return>
```

If you are prompted like below, please select "o".

```
r) reboot, o) ok prompt, h) halt? o
```

- 5) Boot the system in single-user mode.

```
{?} ok boot -s <Return>
```

When the following message is displayed, enter the password.

```
Requesting System Maintenance Mode  
SINGLE USER MODE  
  
Root password for system maintenance (control-d to bypass): password <Return>
```

- 6) Mount the required file system.

```
# /usr/sbin/mountall -l <Return>
```

Note) If there are some file systems (/opt) which are not mounted by the 'mountall -l' command while you are making preparations for the patch application, please mount them by the mount(1M) command one by one.

Case A When Solaris 10 6/06 or later uses ZFS

Mount the required file system.

```
# /usr/sbin/zfs mount -a <Return>
```

- 7) Mount the DVD/CD.

The mounting procedure depends on the model.

For details of mounting the DVD/CD, see Appendix F, "Mounting the DVD/CD".

- 8) Install Enhanced Support Facility with the `esfadd` command.

```
# bin/esfadd <Return>
```

A confirmation message like the one shown below appears. Enter "yes" to continue installation.

Example

```
Enhanced Support Facility 3.2 will be installed.

Platform: SUNW,SPARC-Enterprise-T5120
OS Release: Solaris 10

Do you want to continue with this installation? [yes or no ?]: yes
<Return>
```

- **If the file system has not been mounted**

If the file system has not been mounted, the alarm message shown below is displayed. Enter "no" to terminate the `esfadd` command.

Example

```
esfadd: ERROR: The directory (/opt) where the packages will be
installed does not exist.
Interrupt installation and mount the /opt.

Select (n) no stop install.
Select (y) yes continue to install. [yes or no ?]:
```

Note) If you installed this product without mounting "/opt", please mount "/opt" after removing this product following the instructions in "5.4 Removing Enhanced Support Facility" and then re-install this product.

- **When an old version of Enhanced Support Facility is installed**

When an old version of Enhanced Support Facility is installed, the message shown below appears. In this case, the environment settings file needs to be saved. Do this by following the procedure in Section 5.3, "Update Installation".

Example

```
Enhanced Support Facility will be updated to Enhanced Support Facility 3.2

Platform: SUNW,SPARC-Enterprise-T5120
OS Release: Solaris 10

Do you want to continue with this update? [yes or no ?]:
```

- **When you installed Enhanced Support Facility 3.2 into unsupported machine models.**

When you try to install Enhanced Support Facility 3.2 into machine models unsupported by Enhanced Support Facility 3.2, either of the following messages is displayed.

Example

```
# bin/esfadd <Return>
esfadd: ERROR: This Hardware Platform is not supported.
```

or

Example

```
# bin/esfadd <Return>
esfadd: ERROR: The corresponding platform directory does not exist.
```

For the following machines, please use Enhanced Support Facility attached to the device.

- PRIMEPOWER1/100/200/250/400/450/600/650/800/850/900/1000/1500/2000/2500

- GP7000F Model 200/200R/400/400R/400A/600/600R/1000/2000

- 9) Unmount the DVD/CD drive.

```
# cd / <Return>
# /usr/sbin/umount /cdrom <Return>
```

or

```
# cd / <Return>
# /usr/sbin/umount /cdrom/cdrom0 <Return>
```

- 10) Eject Enhanced Support Facility 3.2 DVD/CD.

- 11) When Enhanced Support Facility Manuals & Patches is attached, insert Enhanced Support Facility Manuals & Patches into the DVD/CD drive to apply patches.

If you cannot see the contents of the DVD/CD, please refer to "Appendix F Mounting the DVD/CD" to mount the DVD/CD again.

When Enhanced Support Facility Manuals & Patches is not attached, go to 15) and perform the remaining steps.

- 12) Go to the root directory of the DVD/CD and execute the esfpachadd command with following procedure.

```
# cd /cdrom/ESFREMCSF <Return>
# bin/esfpachadd <Return>
```

or

```
# cd /cdrom/cdrom0/ESFREMCSF <Return>
# bin/esfpachadd <Return>
```

Either of the following confirmation messages is displayed. Enter "yes" to continue the installation.

Example

```
Enhanced Support Facility 3.2 correction patches will be applied.

Platform: SUNW,SPARC-Enterprise-T5120
OS Release: Solaris 10

Do you want to continue with this installation? [yes or no ?]: yes
```

- 13) Unmount the DVD/CD drive.

```
# cd / <Return>
# /usr/sbin/umount /cdrom <Return>
```

or

```
# cd / <Return>
# /usr/sbin/umount /cdrom/cdrom0 <Return>
```

- 14) Eject Enhanced Support Facility Manuals & Patches DVD/CD.

- 15) Reboot the system.

```
# /usr/sbin/shutdown -y -g0 -i6 <Return>
```

- 16) The superuser starts the volume manager.

```
# /etc/init.d/volmgt start <Return>
```

- 17) Check the version of the individual packages included in the installed Enhanced Support Facility 3.2 using the `esfver` command.

```
# /opt/FJSVbse/bin/esfver -l <Return>
```

Example

```
esfver: INFO: Individual Packages Version of already installed Enhanced Support
Facility.
PKGNAME          VERSION          REVISION
-----
FJSVbse          3.2              2011.01.1300
FJSVdrop1       1.0              2006.08.0800
                 :
                 :
FJSVparam       1.1              2005.01.1100
-----
ESF_PATCH_VERSION = 3.2A00_20110113
```

Note) The individual package versions displayed by this command may be later than the version listed in the program components table. But the installation will be OK.

5.2.4 Messages appearing during installation

Note 1: Cancel installation if the following occurs:

When the following message is displayed during the installation, type "n" to exit the installation process.

This message will be displayed when the `<pkginst>` package installation fails.

For more information, please refer to "D.1.2 Resolution of problems occur when package is installed(II)".

```
A version of the <pkginst> package is already installed on this machine.  
Current administration ds not allow new instances of an existing package  
to be created, nor existing instances to be overwritten.
```

```
No changes were made to the system.
```

```
There are n more packages to be installed.
```

```
Do you want to continue with installation [y,n,?]
```

Note 2: The message shown below may be displayed but the installation can be performed without any problems.

The following message may be displayed when installing FJSVdef packages, but the installation will complete normally.

```
cron may not be running - call your system administrator
```

Note 3: Messages output during patch application

- **When patches are supplied with the product**

After package installation is finished, the message shown below is output and patches are automatically applied.

For information on the patches that are applied, see README in the product DVD/CD.

The applied patches vary depending on the system status.

```
/cdrom/cdrom0/ESFREMCSPP/README
```

```
Enhanced Support Facility 3.2 collection patches will be applied.

Checking installed patches...
Verifying sufficient filesystem capacity (dry run method)...
Installing patch packages...
    :
    :
    :
---- esfpatchadd result. ----
Applied patches:
    912542-01
```

Note 3-1

If the following message is displayed, check the system environment. See Appendix D.3, "When the patches fail to be applied" for details.

```
---- esfpatchadd result. ----
Patches not applied:
    Patch
```

Note 3-2

There is no problem with patch application even though the following messages are displayed with Solaris10.

```
touch: /var/sadm/patch/.patchaddLock cannot create
chmod: WARNING: can't access /var/sadm/patch/.patchaddLock
/usr/lib/patch/patchadd[27]: /var/sadm/patch/.patchaddLock: cannot
create
```

5.2.5 Environment setting after installation

The following table lists the environment settings required to use this software.
For documentation information, refer to "2 Online Manuals".

Table 5.2.5-1 Environment Settings List

No.	Component	Description
1	SCF/SCSI Fault LED support option	To use the command provided by the SCF/SCSI Fault LED support option, the PATH environment variable must be changed. For details, see Section 3.3.1.2, "Setting for when the server is installed" in Section 3.3, " SCF/SCSI Fault LED Support Option [SPARC Enterprise Server]" of "Enhanced Support Facility User's Guide".
2	Remote Support	<p>The remote support function's investigation data collection function</p> <p>The remote support function's investigation data collection function uses three system semaphore identifiers for program resource management.</p> <p>However, system parameters need not be changed.</p> <p>(By default 128 semaphore identifiers can be used.)</p> <p>If more semaphore identifiers are required, use the prctl(1) command to increase the value of project.max-sem-ids. For details, refer to the manual page of the prctl(1) command. In the following example, the value of project.max-sem-ids for project name user.root is 138.</p> <pre>prctl -n project.max-sem-ids -t privileged -r -v 138 -i project user.root</pre>

5.2.6 Applying modifications

If the latest version of PTF (Program Temporary Fix), patches, etc. are available, please apply them. Refer to the manual supplied with the PTF or patches for information on how to do this.

5.3 Update Installation

5.3.1 Important Notes Before the Update

Table 5.3.1-1 Important Notes List

Single user mode	You need to install this product in single user mode.
Mounting the file system	This product is installed into "/opt". If "/opt" is another file system, "/opt" is not mounted in single user mode. Therefore please be sure to mount "/opt" with <code>mountall -l</code> before installing this product.
User authority	<p>To install this software, cron must be set up to be used with root and adm user authority. At installation, "/etc/cron.d/cron.allow" must be set so that users with root or admin authority can use cron. By default, these users are permitted to use cron and, therefore, the setting need not be changed unless the corresponding permissions were changed.</p> <p>Also, for the login shell of root users and adm users written in the "etc/passwd" file, set a shell program that can be used as a command interpreter (for example, /sbin/sh). If you set a shell program that cannot be used as a command interpreter (for example, /bin/false), Enhanced Support Facility installation will fail.</p>
Saving the environment settings file	If an update installation is to be performed, the environment settings file may need to be saved in advance. See Section 5.3.3, "Checking the system environment" to check whether the environment settings file needs to be saved.

5.3.2 Installation time

It takes about 15 minutes to install this software. Note that this installation time excludes any time for rebooting, as that depends on the system configuration.

5.3.3 Checking the system environment

- 1) Insert Enhanced Support Facility 3.2 DVD/CD into the DVD/CD drive.
- 2) Type "su" at the shell prompt.

```
% su <Return>
```

- 3) Enter the root (superuser) password.

```
Password: password <Return>  
#
```

- 4) Enter the OpenBoot environment.

```
# /usr/sbin/shutdown -y -g0 -i0 <Return>
```

If you are prompted like below, please select "o".

```
r) reboot, o) ok prompt, h) halt? o
```

- 5) Boot the system in single-user mode.

```
{?} ok boot -s <Return>
```

When the following message is displayed, enter the password.

```
Requesting System Maintenance Mode  
SINGLE USER MODE  
  
Root password for system maintenance (control-d to bypass): password <Return>
```

- 6) Mount the required file system.

```
# /usr/sbin/mountall -l <Return>
```

Note) If there are some file systems (/opt) which are not mounted by the 'mountall -l' command while you are making preparations for the patch application, please mount them by the mount(1M) command one by one.

Case A When Solaris 10 6/06 or later uses ZFS

Mount the required file system.

```
# /usr/sbin/zfs mount -a <Return>
```

- 7) Mount the DVD/CD.

For details of mounting the DVD/CD, see Appendix F, "Mounting the DVD/CD".

- 8) Check the package to be updated to see whether there is an environment settings file that needs to be saved.

```
# bin/esfadd -c <Return>
```

The packages being updated will be displayed.

Example

```
Check the package that will be updated.

Platform: SUNW,SPARC-Enterprise-T5120
OS Release: Solaris 10

PKGNAME          CURRENT VERSION          FUTURE VERSION
-----
FJSVbse          3.0    REV=2006.12.1200    3.2    REV=2011.01.1300
FJSVapcs         1.4.0  REV=2003.08.1200    1.4.2  REV=2008.08.1200
FJSVdmp          1.5    REV=2002.11.2700    1.6    REV=2008.09.0200
FJSVhrmse        3.1.1  REV=2006.10.3100    3.5.9  REV=2010.12.0700
FJSVpmgc         1.0    REV=2005.11.1500    1.1    REV=2008.07.0100
-----

Please save data according to the INSTALLATION GUIDE if the package(s) for which
the save of data is necessary exist in the above-mentioned package(s).
```

Refer to the table below to check whether there is an environment settings file that needs to be saved in advance for a package to be updated.

Table 5.3.3-1 Environment Setting Files List

Component name	Package name	Environment setting file
IKPDR Command	FJSVdropl	/etc/opt/FJSVdr/reply/C/dr_op
Machine Administration Remote Support	FJSVrlib FJSVragt FJSVrmaos	Provides the savelogs command to save/restore the environment setting file.
Auto Power Control System	FJSVapcs	/var/opt/FJSVapcs/*

If the environment settings file needs to be saved, see Section 5.3.4, "Saving the environment setting file" and save the environment settings file. If it need not be saved, proceed to Section 5.3.5, "Installing Enhanced Support Facility".

If the following message is displayed, initial installation is required. Proceed to Section 5.2.3, "Instructions".

```
esfadd: INFO: This software is not installed on the system.
```

5.3.4 Saving the environment setting file

5.3.4.1 DR Command

Save the reply file for Dynamic reconfiguration if you use Dynamic Reconfiguration and modified the reply file. Refer to "Dynamic Reconfiguration User's Guide 3.6.2 Reply file" for detail.

```
# cp /etc/opt/FJSVdr/reply/C/dr_op save_file <Return>
```

5.3.4.2 SCF/SCSI Fault LED support option

Save the SCF/SCSI Fault LED support option setting files.

- For SPARC Enterprise M series

```
# cd / <Return>
# ls /etc/opt/FJSVhwr/adrc.conf | cpio -o -O save_file <Return>
```

5.3.4.3 Machine Administration/Remote Support

If you are using Machine Administration or Remote Support, save the environment setting files of the packages constituting Machine Administration and Remote Support with the savelogs command.

```
# /usr/sbin/FJSVadm/savelogs -mo save_file_directory <Return>
```

5.3.4.4 Auto Power Control System

If you are using the Auto Power Control System, save the older version of the environment setting file for the FJSVapcs package.

```
# cd / <Return>
# find /var/opt/FJSVapcs/ -print -depth | /usr/bin/cpio -o -O save_file <Return>
```

5.3.5 Instructions

- 1) Install Enhanced Support Facility with the `esfadd` command.

```
# bin/esfadd <Return>
```

The message shown below is displayed. Enter "yes" to continue installation.

```
Enhanced Support Facility will be updated to Enhanced Support Facility 3.2

Platform: SUNW,SPARC-Enterprise-T5120
OS Release: Solaris 10

Do you want to continue with this update? [yes or no ?]: yes <Return>
```

- **If the file system has not been mounted**

If the file system has not been mounted, the alarm message shown below is displayed. Enter "no" to terminate the `esfadd` command.

```
esfadd: ERROR: The directory (/opt) where the packages will be installed does
not exist.
Do you want to continue with this installation? [yes or no ?]:
```

Note) If you installed this product without mounting "/opt", please mount "/opt" after removing this product following the instructions in "5.4 Removing Enhanced Support Facility" and then re-install this product.

- **If an old version of Enhanced Support Facility is not installed**

If the following message is displayed, initial installation is required. Enter "yes" to continue installation.

```
Enhanced Support Facility 3.2 will be installed.

Platform: SUNW,SPARC-Enterprise-T5120
OS Release: Solaris 10

Do you want to continue with this installation? [yes or no ?]: yes <Return>
```

- **When you installed Enhanced Support Facility 3.2 into unsupported machine models.**

When you try to install Enhanced Support Facility 3.2 into machine models unsupported by Enhanced Support Facility 3.2, either of the following messages is displayed.

Example

```
# bin/esfadd <Return>
esfadd: ERROR: This Hardware Platform is not supported.
```

or

Example

```
# bin/esfadd <Return>
esfadd: ERROR: The corresponding platform directory does not exist.
```

For the following machines, please use Enhanced Support Facility attached to the device.

- PRIMEPOWER1/100/200/250/400/450/600/650/800/850/900/1000/1500/2000/2500
- GP7000F Model 200/200R/400/400R/400A/600/600R/1000/2000

- 2) Unmount the DVD/CD drive.

```
# cd / <Return>
# /usr/sbin/umount /cdrom <Return>
```

or

```
# cd / <Return>
# /usr/sbin/umount /cdrom/cdrom0 <Return>
```

- 3) Eject Enhanced Support Facility 3.2 DVD/CD.
- 4) When Enhanced Support Facility Manuals & Patches is attached, insert Enhanced Support Facility Manuals & Patches into the DVD/CD drive to apply patches.
If you cannot see the contents of the DVD/CD, please refer to "Appendix F Mounting the DVD/CD" to mount the DVD/CD again.
When Enhanced Support Facility Manuals & Patches is not attached, go to 8) and perform the remaining steps.
- 5) Go to the root directory of the DVD/CD to execute the `esfpachadd` command with the following procedure.

```
# cd /cdrom/ESFREMCSF <Return>
# bin/esfpachadd <Return>
```

or

```
# cd /cdrom/cdrom0/ESFREMCSF <Return>
# bin/esfpachadd <Return>
```

Either of the following confirmation messages is displayed. Enter "yes" to continue the installation.

Example

```
Enhanced Support Facility 3.2 correction patches will be applied.

Platform: SUNW,SPARC-Enterprise-T5120
OS Release: Solaris 10

Do you want to continue with this installation? [yes or no ?]: yes
```

- 6) Unmount the DVD/CD drive.

```
# cd / <Return>
# /usr/sbin/umount /cdrom <Return>
```

or

```
# cd / <Return>
# /usr/sbin/umount /cdrom/cdrom0 <Return>
```

- 7) Eject Enhanced Support Facility Manuals & Patches DVD/CD.

- 8) Reboot the system.

```
# /usr/sbin/shutdown -y -g0 -i6 <Return>
```

- 9) The superuser starts the volume manager.

```
# /etc/init.d/volmgt start <Return>
```

- 10) Check the version of the individual packages included in the installed Enhanced Support Facility 3.2 using the `esfver` command.

```
# /opt/FJSVbse/bin/esfver -l <Return>
```

Example

```
esfver: INFO: Individual Packages Version of already installed Enhanced Support
Facility.
PKGNAME          VERSION          REVISION
-----
FJSVbse          3.2              2011.01.1300
FJSVdropl        1.0              2006.08.0800
                  :
                  :
FJSVparam        1.1              2005.01.1100
-----
ESF_PATCH_VERSION = 3.2A00_20110113
```

Note) The individual package versions displayed by this command may be later than the version listed in the program components table. But the installation will be OK.

5.3.6 Messages appearing during installation

Note 1: Cancel installation if the following occurs:

When the following message is displayed during the installation, type "n" to exit the installation process.

This message will be displayed when the *<pkginst>* package installation fails.

For more information, please refer to "D.1.2 Resolution of problems occur when package is installed(II)".

```
A version of the <pkginst> package is already installed on this machine.  
Current administration ds not allow new instances of an existing package  
to be created, nor existing instances to be overwritten.
```

```
No changes were made to the system.
```

```
There are n more packages to be installed.
```

```
Do you want to continue with installation [y,n,?]
```

Note 2: The message shown below may be displayed but the installation can be performed without any problems.

The following message may be displayed when installing FJSVdef packages, but the installation will complete normally.

```
cron may not be running - call your system administrator
```


Note 3: Messages output during patch application

- **When patches are supplied with the product**

After package installation is finished, the message shown below is output and patches are automatically applied.

For information on the patches that are applied, see README in the product DVD/CD.

The applied patches vary depending on the system status.

`/cdrom/cdrom0/ESFREMCSPP/README`

```
Enhanced Support Facility 3.2 collection patches will be applied.

Checking installed patches...
Verifying sufficient filesystem capacity (dry run method)...
Installing patch packages...
      :
      :
      :
---- esfpatchadd result. ----
Applied patches:
    912542-01
```

Note 3-1

If the following message is displayed, check the system environment. See Appendix D.3, "When the patches fail to be applied" for details.

```
---- esfpatchadd result. ----
Patches not applied:
    Patch
```

Note 3-2

There is no problem with patch application even though the following messages are displayed with Solaris10.

```
touch: /var/sadm/patch/.patchaddLock cannot create
chmod: WARNING: can't access /var/sadm/patch/.patchaddLock
/usr/lib/patch/patchadd[27]: /var/sadm/patch/.patchaddLock: cannot
create
```

5.3.7 Restoring the environment settings file

Where a previous version of the environment setting file has been saved using the instructions provided in Section 5.3.4, "Saving the environment setting file" it can be restored as follows:

5.3.7.1 DR Command

Modify the new reply file that is located at `/etc/opt/FJSVdr/reply/C/dr_op`. (Please use the saved version of previous reply file for reference). There may be new reply messages added as a result of the Enhanced Support Facility upgrade. See Section 6.1.3.3, "Inquiring Messages" or 7.1.3.3, "Inquiring Messages" in the "Dynamic Reconfiguration User's Guide" before modifying the reply file.

5.3.7.2 SCF/SCSI Fault LED support option

Restore the SCF/SCSI Fault LED support option setting files.

- For SPARC Enterprise M series

```
# cd / <Return>
# cpio -iu -I save_file <Return>
# chown root /etc/opt/FJSVhwr/adrc.conf <Return>
# chgrp root /etc/opt/FJSVhwr/adrc.conf <Return>
```

5.3.7.3 Machine Administration/Remote Support

Restore the environment setting file of the Machine Administration and Remote Support with the `savelogs` command.

```
# /usr/sbin/FJSVmadm/savelogs -r save_file_directory <Return>
```

5.3.7.4 Auto Power Control System

Restore the environment setting file of the Auto Power Control System.

```
# /usr/bin/cpio -iu -I save_file <Return>
```

5.3.8 Environment setting after installation

The following table lists the environment settings required to use this software. For documentation information, refer to "2 Online Manuals."

Table 5.3.8-1 Environment Settings List

No.	Component	Description
1	SCF/SCSI Fault LED support option	To use the command provided by the SCF/SCSI Fault LED support option, the PATH environment variable must be changed. For details, see Section 3.3.1.2, "Setting for when the server is installed" in Section 3.3, "SCF/SCSI Fault LED Support Option [SPARC Enterprise Server]" of "Enhanced Support Facility User's Guide".
2	Remote Support	<p>The remote support function's investigation data collection function</p> <p>The remote support function's investigation data collection function uses three system semaphore identifiers for program resource management.</p> <p>However, system parameters need not be changed.</p> <p>(By default 128 semaphore identifiers can be used.)</p> <p>If more semaphore identifiers are required, use the prctl(1) command to increase the value of project.max-sem-ids. For details, refer to the manual page of the prctl(1) command. In the following example, the value of project.max-sem-ids for project name user.root is 138.</p> <pre>prctl -n project.max-sem-ids -t privileged -r -v 138 -i project user.root</pre>

5.3.9 Applying modifications

If the latest version of PTF (Program Temporary Fix), patches, etc. are available, please apply them. Refer to the manual supplied with the PTF or patches for information on how to do this.

5.4 Removing Enhanced Support Facility

The following procedures describe how to remove all of the packages provided in this software.

Use the DVD/CD drive equipped in the main unit to delete the Enhanced Support Facility.

SPARC Enterprise T1000 are not equipped with internal DVD/CD.

Use the DVD/CD drive with the install server to delete the Enhanced Support Facility.

To use the DVD/CD drive of the installation server, please refer to "Appendix F Mounting the DVD/CD".

5.4.1 Important Notes Before the Removal

Table 5.4.1-1 Important Notes List

Single user mode	You need to remove this product in single user mode.
Mounting the file system	This product is installed into "/opt". If "/opt" is another file system, "/opt" is not mounted in single user mode. Therefore please be sure to mount "/opt" with mountall-1 before removing this product.
User authority	This software uses cron via the root and adm users. Before removing this software, cron ensure that the root and adm users are not disabled. By default these users are allowed to use cron, so there is no need to check your system if no changes have been made. If any change has been made to the system, remove this software after you revert to the default settings. (For example, the adm user must not be set to /bin/false in the /etc/passwd file.)

5.4.2 Removal of Software

- 1) Insert Enhanced Support Facility 3.2 DVD/CD into the DVD/CD drive.

- 2) Type "su" at the shell prompt.

```
% su <Return>
```

- 3) Enter the root(superuser) password.

```
Password: password <Return>  
#
```

- 4) Enter the OpenBoot environment.

```
# /usr/sbin/shutdown -y -g0 -i0 <Return>
```

If you are prompted like below, please select "o".

```
r)eboot, o)k prompt, h)alt? o
```

- 5) Boot the system in single-user mode.

```
{?} ok boot -s <Return>
```

When the following message is displayed, enter the password.

```
Requesting System Maintenance Mode  
SINGLE USER MODE  
  
Root password for system maintenance (control-d to bypass): password <Return>
```

- 6) Mount the required file system.

```
# /usr/sbin/mountall -l <Return>
```

Note) If there are some file systems (/opt) which are not mounted by the 'mountall -l' command while you are making preparations for the patch application, please mount them by the mount(1M) command one by one.

Case A When Solaris 10 6/06 or later uses ZFS

Mount the required file system.

```
# /usr/sbin/zfs mount -a <Return>
```

- 7) Mount the DVD/CD.

For details of mounting the DVD/CD, see Appendix F, "Mounting the DVD/CD".

- 8) Remove Enhanced Support Facility with the esfrm command.
For detailed information on the esfrm command, please refer to "A.2 esfrm (1M) command".

```
# bin/esfrm <Return>
```

When the following message is displayed, type "all","no"or "part".

[Example: If a package has an asterisk mark ("*")]

```
Enhanced Support Facility 3.2 will be removed.

FJSVbse      Enhanced Support Facility Information Management
              (sparc) 3.2,REV=2011.01.1300
              :
              :
FJSVparam    System Parameter Diagnosis
              (sparc) 1.1,REV=2005.01.1100

There is a possibility to cause problem(s) in the system when the
packages where "*" adheres to the head of the package name is deleted.

Please input "all" when you want to remove all packages,input "no"
when you want to interrupt the uninstallation, or input "part" when
you want to remove only packages where "*" does not adhere.

Please select. [no, all or part]:
```

If a package has an asterisk mark ("*"), be sure to select "part".

Please select "part" not to remove packages having an asterisk ("*").

A package with an asterisk ("*") at the head of its name has been installed with a product other than Enhanced Support Facility.

If you select "all", packages having an asterisk ("*") are removed and the behavior of products other than Enhanced Support Facility is affected by this.

```
Enhanced Support Facility 3.2 will be removed.

FJSVbse      Enhanced Support Facility Information Management
              (sparc) 3.2,REV=2011.01.1300
*FJSVsnap    System Information Output Tool
              (all) 2.6,REV=2006.06.1300
              :
              :
FJSVdmp      Crash Dump Assistant
              (sparc) 1.6,REV=2008.09.0200

There is a possibility to cause problem in the system when the
packages where "*" adheres to the head of the package name is deleted.

Please input "all" when you want to remove all packages,input "no"
when you want to interrupt the uninstallation, or input "part" when
you want to remove only packages where "*" does not adhere.

Please select. [no,all or part]:
```

Confirmation messages will be displayed when removing the packages. Type "y" to continue the removal.

Do not remove packages that are depended on by other packages. If you attempt to remove the package, the following message will be displayed. Type "n".

```
WARNING:
  The <pkg> package depends on the package currently
  being removed.
Dependency checking failed.

Do you want to continue with the removal of this package [y,n,?,q] n <Return>
```

If the following message is displayed, type "y" to continue the removal.

```
Do you want to continue with package removal [y,n,?,q] y <Return>
```

- 9) Unmount the DVD/CD.

```
# cd / <Return>
# /usr/sbin/umount /cdrom <Return>
```

or

```
# cd / <Return>
# /usr/sbin/umount /cdrom/cdrom0 <Return>
```

- 10) Eject Enhanced Support Facility 3.2 DVD/CD.

- 11) Reboot the system.

```
# /usr/sbin/shutdown -y -g0 -i6 <Return>
```

- 12) The superuser starts the volume manager.

```
# /etc/init.d/volmgt start <Return>
```

5.4.3 Messages Display When Removing Software

Note 1: In the case described as below, please perform troubleshooting for the removal of software.

Note1-1

If the following messages are output during the removal of a FJSVdmp package and the removal of the FJSVdmp package ends with failure, the procedure for removing the software may be wrong.

Regarding resolution, please refer to "Appendix D.2.2".

```
svc:/system/fjsvdmpsnap:default remains enabled; aborting
pkgm: ERROR: class action script did not complete successfully

Removal of <FJSVdmp> failed.

esfrm: ERROR: Failed to remove a FJSVdmp package.
```

Note 2: The following messages may be displayed, but these messages do not affect the removal.

Note2-1

The following message may be displayed when removing FJSVrplib package, but the removal will be complete normally.

```
mkdir: Failed to make directory "/opt/FJSVrplib/etc/apply"; No such file or
directory
```

Note2-2

The following message may be displayed when removing FJSVmadm package, but the removal will be complete normally.

```
rm: /var/opt/FJSVmadm/xxx/xxxxxxxx is a directory
```

Note2-3

The following message may be displayed when installing FJSVdef packages, but the removal will complete normally.

```
cron may not be running - call your system administrator
```

Note2-4

There is no problem in the deletion though the following messages might be displayed in the zone environment of Solaris 10 while deleting the package.

```
pkgm: ERROR: unable to perform preremoval check of package <FJSVxxxx> in zone
< zonearea >
```


5.5 About Oracle VM Server for SPARC/Logical Domains (LDoms)

Oracle VM Server for SPARC/Logical Domains (LDoms) is a virtualization technology provided by Oracle and enables you to run multiple different operating systems on one computer.

Logical Domains Manager can be installed on SPARC T3-1/T3-2/T3-4, SPARC Enterprise T5120/T5140/T5220/T5240/T5440.

Notes when using Oracle VM Server for SPARC/Logical Domains (LDoms) are available.

Please refer to "4.2 Notes on Oracle VM Server for SPARC/Logical Domains (LDoms)" in "Enhanced Support Facility User's Guide".

5.5.1 Flowchart of Building Oracle VM Server for SPARC/Logical Domains (LDom)s Environment

To install the Enhanced Support Facility in Oracle VM Server for SPARC/Logical Domains (LDom)s environment, two installation methods are available.

One is to install it into the control domain, and another is to install it into the guest domain.

This chapter explains the installation steps.

- 1) The installation procedure to install the Enhanced Support Facility into the control domain is explained in "5.5.2 Building Procedure for the Enhanced Support Facility in the Control Domain". Please see flowchart (1)-(6) below for the installation steps.
- 2) The installation procedure to install the Enhanced Support Facility into the guest domain is explained in "5.5.3 Building Procedure for the Enhanced Support Facility in the Guest Domain". Please see flowchart (7) below for the installation steps.

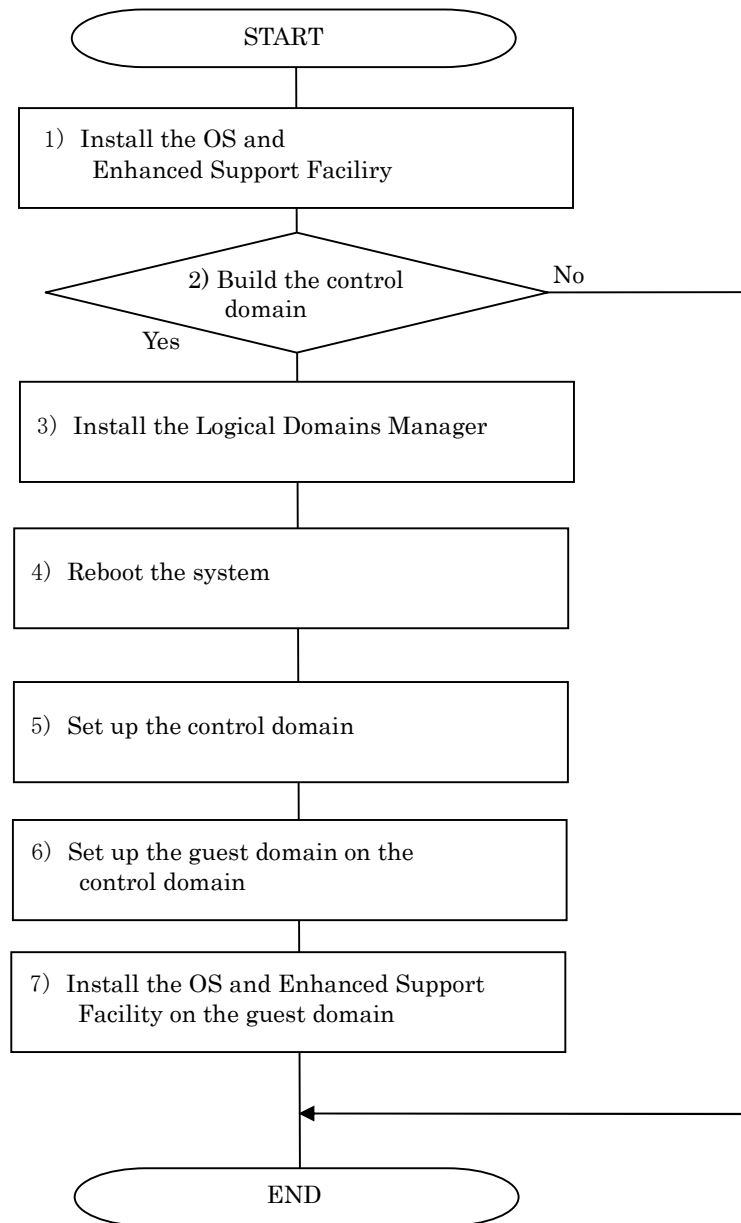


Figure 5.5.1-1 Flowchart of Building Oracle VM Server for SPARC/Logical Domains (LDom)s Environment

5.5.2 Building Procedure for the Enhanced Support Facility in the Control Domain

This section explains how to set up the Enhanced Support Facility in the control domain.

- 1) Install the OS into the mainframe.
For more information, please refer to "SPARC Enterprise Server Hardware Platform Guide".
- 2) Install the Enhanced Support Facility.
For more information, please refer to "5.2.3 Instructions".
- 3) Install the Logical Domains Manager.
For more information, please refer to "SPARC Enterprise Oracle VM Server for SPARC Guide".
- 4) Reboot the system.
- 5) Set up the control domain.
For more information, please refer to "SPARC Enterprise Oracle VM Server for SPARC Guide".
- 6) Set up the guest domain by the control domain.
For more information, please refer to "SPARC Enterprise Oracle VM Server for SPARC Guide".

Please refer to "5.5.3 Building Procedure for the Enhanced Support Facility in the Guest Domain" when you set up the guest domain and install the Enhanced Support Facility in it.

5.5.3 Building Procedure for the Enhanced Support Facility in the Guest Domain

This section explains how to set up the Enhanced Support Facility in the guest domain.

- 1) Install the OS into the guest domain.
For more information, please refer to "SPARC Enterprise Server Hardware Platform Guide".
- 2) Install the Enhanced Support Facility into the guest domain.
For more information, please refer to "5.2.3 Instructions".
When installing the Enhanced Support Facility, use the DVD/CD of the installation server.
Regarding the network mount, please refer to "Appendix F.2 Mounting a DVD/CD of an installation server".

5.5.4 Update Installation in Oracle VM Server for SPARC/Logical Domains (LDoms) Environment

There are two kinds of update installation in Oracle VM Server for SPARC/Logical Domains (LDoms) environment.

One is performed into the control domain environment and another is performed into the guest domain environment.

5.5.4.1 Update Installation Procedure in the Control Domain Environment

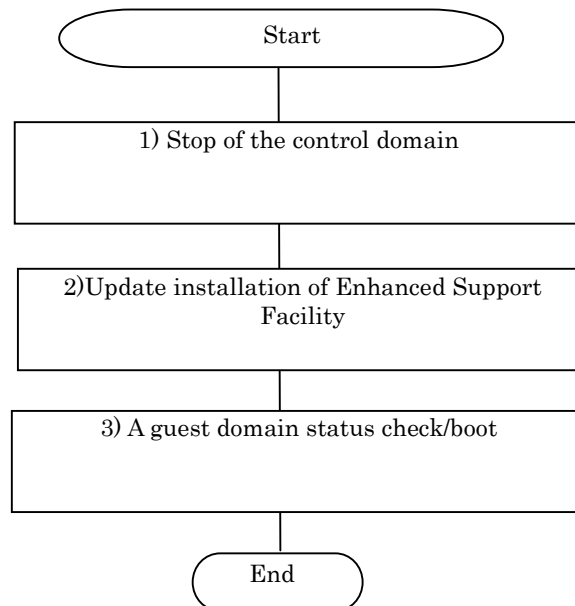


Figure 5.5.4.1-1 Flowchart of an update installation in the control domain environment

- 1) Stop the control domain
You need to take the steps below if you want to run the control domain in single-user mode.
 - Stop all guest domains.
 - Release the combination of resources of all guest domainsFor more information, please refer to "SPARC Enterprise Oracle VM Server for SPARC Guide".
- 2) Perform the update installation of Enhanced Support Facility.
For more information, please refer to "5.3 Update Installation".
- 3) Check the status of the guest domain and start it.
 - Check the status of the domain
 - Start the domainFor more information, please refer to "SPARC Enterprise Oracle VM Server for SPARC Guide".
Note) If you only start the domain, the system may be in OBP status.
Therefore please connect to the domain by the console and start it in multi-use mode.

5.5.4.2 Update Installation Procedure in the Guest Domain Environment

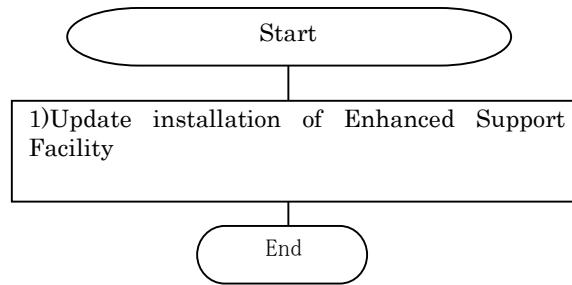


Figure 5.5.4.2-1 Flowchart of an update installation in the guest domain environment

- 1) Perform the update installation of Enhanced Support Facility.
For more information, please refer to "5.3 Update Installation".
When you install Enhanced Support Facility, please use a DVD/CD of the installation server.
Regarding network mount, please refer to "Appendix F.2 Mounting a DVD/CD of an installation server".

Chapter 6 Extended Installation

6.1 OS Upgrade Installation

This section explains system upgrading that is performed when installing a new version of Solaris OS on a Solaris server on which existing Enhanced Support Facility is already running.

Enhanced Support Facility automatically selects a package for each Solaris version. Therefore, before upgrading the OS, be sure to uninstall Enhanced Support Facility. Install Enhanced Support Facility again after OS upgrading.

6.1.1 Upgrade workflow

The upgrade workflow is shown in Figure 6.1.1-1.

For detailed procedures, refer to the respective sections indicated in individual frames.

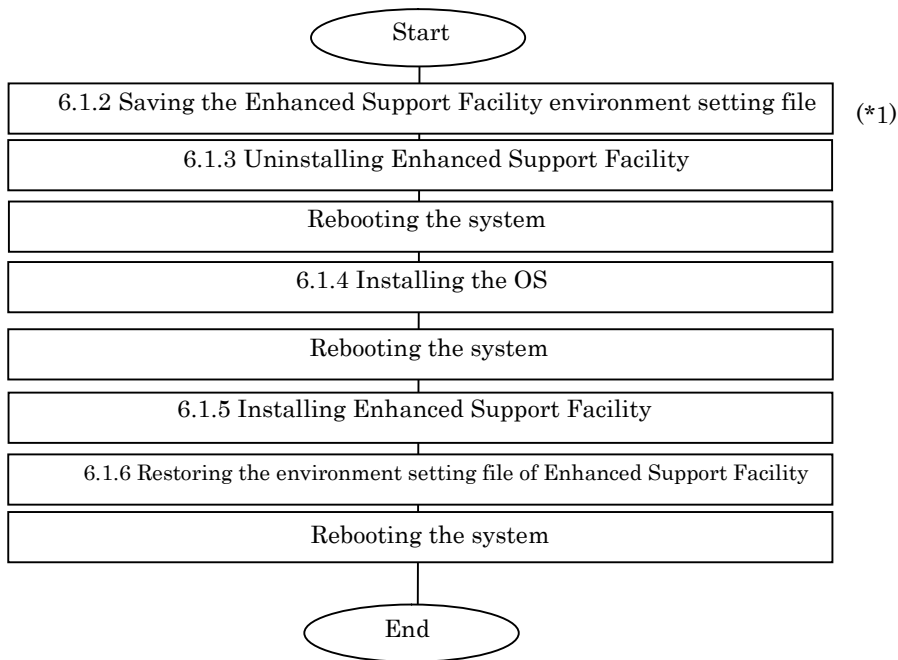


Figure 6.1.1-1 Workflow for upgrading

*1 Before upgrading the OS, be sure to save the Enhanced Support Facility environment setting file and uninstall Enhanced Support Facility.

6.1.2 Saving the Enhanced Support Facility environment setting file

Before starting OS upgrading, be sure to save the environment setting file.
The file to be saved varies depending on the installed package.
For details, refer to Section 5.3.4, "Saving the environment setting file".

6.1.3 Uninstalling Enhanced Support Facility

Before starting OS upgrading, uninstall Enhanced Support Facility.
For details, refer to Section 5.4.2, "Removal of software".

6.1.4 Installing the OS

Installing the Solaris OS.
For details, refer to "SPARC Enterprise Server Hardware Platform Guide".

6.1.5 Installing Enhanced Support Facility

After OS installation is finished, install Enhanced Support Facility.
For details, refer to Section 5.2.3, "Instructions".

6.1.6 Restoring the environment setting file of Enhanced Support Facility

After the installation of Enhanced Support Facility is finished, restore the file saved in Section 6.1.2, "Saving the Enhanced Support Facility environment setting file".
For details, refer to Section 5.3.7, "Restoring the environment settings file".

6.2 Custom JumpStart

Please see documents provided by Oracle about Custom JumpStart.

6.2.1 Support environment

- Solaris OS:
Solaris 10

- Models:
 - SPARC Enterprise T series
 - SPARC Enterprise M series

6.2.2 Procedure

This section explains the procedure for network installation using the DVD/CD drive on the installation server.

6.2.2.1 Copying the DVD/CD images to directories on the installation server

- 1) Please copy DVD/CD images of Enhanced Support Facility 3.2 into each directory having a common parent directory.

- 2) Please share the parent directory where DVD/CD images of Enhanced Support Facility 3.2 are placed so that the target server can recognize it.

Example: Execution of the share command

```
# share <Return>
- /export/home/ESF ro,anon=0 ""
```


6.2.2.2 Installation script for Enhanced Support Facility

Install Enhanced Support Facility using a finish script after installing the operating environment. This section explains what should be stated and executed in the finish script.

- 1) State a command for mounting the DVD/CD of Enhanced Support Facility.
Specify the following parameter for the mount command.
-F nfs <install_server_IP>:
 <common parent directory to which the DVD/CD image is copied><mount_point>
Specify /a/mnt for <mount_point> when using JumpStart.
- 2) State a command for installing Enhanced Support Facility 3.2.
Specify the following options for the esfadd command:
-R <installation directory >
 Specify /a for JumpStart.
-n
 With the esfadd command, restrains inquiries.
 Use only when Custom JumpStart.
- 3) Enter the patch application command when Enhanced Support Facility Manuals & Patches is attached.
Specify the following options for the esfpatchadd command:
-R <installation directory >
 Specify /a for JumpStart.
-A
 With the esfpatchadd command, restrains inquiries.
 Use only when Custom JumpStart.
- 4) Finish script

```
mount -F nfs <install_server_IP>:/export/home/ESF /a/mnt  
/a/mnt/esf_dir/bin/esfadd -R /a -n  
/a/mnt/patch_dir/ESFREMCS/bin/esfpatchadd -R /a -A
```

/export/home/ESF: The parent directory common to directories having the copies of the DVD/CD images
esf_dir: Name of directory to which the DVD/CD image of Enhanced Support Facility 3.2 is copied
patch_dir: Name of the directory to which the CD image of the Enhanced Support Facility
Manuals & Patches has been copied

Note) The following message may be displayed when rem_drv(1M) is executed, but it can be ignored.

```
# /usr/sbin/rem_drv -b / oplpanel  
Driver (oplpanel) not installed.
```

6.2.2.3 Flowchart of Building Oracle VM Server for SPARC/Logical Domains (LDoms) Environment

The following describes how to install the Enhanced Support Facility by using Custom JumpStart to create Oracle VM Server for SPARC/Logical Domains (LDoms).

This chapter explains the installation steps.

- 1) The installation procedure to install the Enhanced Support Facility into the control domain is described in "6.2.2.4 Building Procedure for the Control Domain".
- 2) The installation procedure to install the Enhanced Support Facility into the guest domain is described in "6.2.2.5 Building Procedure for the Guest Domain".

6.2.2.4 Building Procedure for the Control Domain

Install the Enhanced Support Facility by using the Custom JumpStart and install the Logical Domains Manager.

- 1) Install the OS and Enhanced Support Facility by using the Custom JumpStart.
Please refer to "6.2 Custom JumpStart".
- 2) Install the Logical Domains Manager.
For more information, please refer to "SPARC Enterprise Oracle VM Server for SPARC Guide".
- 3) Reboot the system.
- 4) Set up the control domain.
For more information, please refer to "SPARC Enterprise Oracle VM Server for SPARC Guide".
- 5) Set up the guest domain by the control domain.
For more information, please refer to "SPARC Enterprise Oracle VM Server for SPARC Guide".

6.2.2.5 Building Procedure for the Guest Domain

Install the OS and Enhanced Support Facility into the guest domain you set up.
Please refer to "6.2 Custom JumpStart".

6.2.3 Notes

For initial install only.

Please specify `initial_install` or `flash_install` for the JumpStart `Install_type` profile keyword.

If the installation of Enhanced Support Facility fails, you need to reinstall the operating system.

Messages when Custom JumpStart is used for SPARC Enterprise.

When you install Enhanced Support Facility using Custom JumpStart for SPARC Enterprise, the following messages may be output. However this is not a problem.

[Example of messages on SPARC Enterprise T5220]

```
df: cannot statvfs /platform/sun4v/lib/libc_psr.so.1: Operation not
applicable
df: cannot statvfs /platform/sun4v/lib/sparcv9/libc_psr.so.1: Operation
not applicable
```

[Example of messages on SPARC Enterprise M3000]

```
df: cannot statvfs /platform/sun4u-us3/lib/libc_psr.so.1: Operation not
applicable
df: cannot statvfs /platform/sun4u-us3/lib/sparcv9/libc_psr.so.1:
Operation not applicable
```

6.3 Flash Archive Installation

You can use the following procedure for the installation using flash archive.

Method 1 is an installation procedure for creating flash archive where OS + (PTF) is installed and then installing Enhanced Support Facility.

Method 2 is an installation procedure for creating flash archive where OS + (PTF) + Enhanced Support Facility and installing it into each machine model +OS.

When you use Method 2, the installer cannot recognize each machine model automatically.

Please use flash archive for the same machine model group and the same OS when you perform the flash archive installation. When you use Method 1, this problem will not occur.

In chapter 6.3, the procedure of Method 2 and notes are explained.

The table of machine model groups supported by this product is shown below.

Table 6.3-1 Machine Group Table

Model name	Machine Group Name
SPARC T3-1/T3-2/T3-4 SPARC Enterprise T1000/T2000/T5120/T5140/T5220/T5240/T5440	LE
SPARC Enterprise M3000/M4000/M5000/M8000/M9000	CW

6.3.1 Procedure for creating a flash archive

The workflow for creating a flash archive is shown in Figure 6.3.1-1.

For detailed procedures, refer to the respective sections indicated in individual frames.

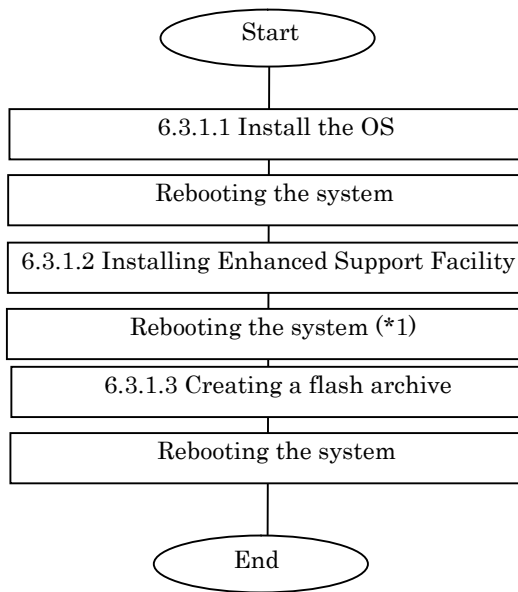


Figure 6.3.1-1 Workflow for creating a flash archive

*1 Reboot the system and then start in single user mode.

6.3.1.1 Installing the OS

Installing the Solaris OS.

For details, refer to "SPARC Enterprise Server Hardware Platform Guide".

6.3.1.2 Installing Enhanced Support Facility

After OS installation is finished, install Enhanced Support Facility.

For details, refer to Section 5.2.3, "Instructions".

6.3.1.3 Creating a flash archive

To create a flash archive, use the flarcreate command in the master system running in single user mode.

```
# /usr/sbin/flarcreate -n name options path/filename <Return>
```

name: a name to be specified for the flash archive.

options: flarcreate command line options

* Some of the available options are listed in the table below:

(For the details of the options, please refer to the flarcreate command.)

Table 6.3.1.3-1 flarcreate command option List

Option	Description
Required option	
-n archive_name	This option specifies a name to be assigned to the flash archive to be created.
Compression option	
-c	The flash archive is compressed using "compress".
Directory and size options	
-R root	An archive is created from the root file system tree. If this option is omitted, flarcreate creates an archive from the /file system.
-S	Size information is not included in the archive.
-H	No hash identifier is generated.
-t	An archive is created on a tape device. Argument "filename" is the name of a tape device.

path: The path of the directory in which the archive file is to be saved.

If no path is specified, flarcreate saves the archive file to the current directory.

filename: Name to be specified for the archive file.

- When archive creation is completed successfully, the flarcreate command returns end code 0.
- If archive creation is unsuccessful, the flarcreate command returns an end code other than 0.
- Attributes such as permission of the created archive file need not be changed.

6.3.1.4 Notes on creating a flash archive

When creating a flash archive, note the following:

You can ignore these notes when creating a flash archive according to the procedure in 1) in Section 6.3.

- If an operating system is installed using a flash archive that has been created on a different type of machine, the operating system does not work.
- Be sure to create a flash archive in single user mode.
- Create a flash archive without setting the Enhanced Support Facility environment.

6.3.2 Installation procedure using a flash archive

This section explains the installation procedure using a flash archive.

6.3.2.1 Custom jump installation using a flash archive

Install a flash archive to the installation server and perform custom jump start installation using a flash archive.

* The following explanation assumes that an archive is stored on the network file system (NFS) server.

* Flash archive creation and flash installation are performed for initial installation.

First, create separately from the prof file used for custom jump start, a flash_prof file to be used to define that a flash archive be used.

Example of flash_prof file

```
[flash_prof]
install_type      flash_install
archive_location  nfs 10.18.91.55:/export/home/flash/T5120-sol10
partitioning      explicit
filesystems       c0t0d0s0 4000 /
filesystems       c0t0d0s1 8000 /var
filesystems       c0t0d0s3 1000 swap
filesystems       c0t0d0s4 8000 /opt
filesystems       c0t0d0s5 8000 /usr
filesystems       c0t0d0s6 free /export/home
```

- 1) Define the install type as flash_install.
- 2) As shown above, set archive_location as in "archive_location nfs server_name:/path/archive-filename". Define the flash_prof file in the rules file.
 - * Execute "share" in advance so that the target can recognize the directory to which the archive is installed on the installation server.
 - * Define the IP address for server_name.
- 3) Define "flash_prof" in the rules file.

The subsequent procedure is the same as that for custom jump start.

6.3.2.2 Installing a flash archive in the clone system

Solaris OS can be installed in a clone system using a flash archive from the Solaris DVD/CD.

For details, refer to the "Solaris Installation Guide".

6.3.2.3 Flowchart of Building Oracle VM Server for SPARC/Logical Domains (LDoms) Environment

The following describes how to install the Enhanced Support Facility by using Flash Archive to create Oracle VM Server for SPARC/Logical Domains (LDoms).

This chapter explains the installation steps.

- 1) The installation procedure to install the Enhanced Support Facility into the control domain is described in "6.3.2.4 Building Procedure for the Control Domain".
- 2) The installation procedure to install the Enhanced Support Facility into the guest domain is described in "6.3.2.5 Building Procedure for the Guest Domain".

6.3.2.4 Building Procedure for the Control Domain

Install the Enhanced Support Facility by using the flash archive and install the Logical Domains Manager.

- 1) Install the OS and Enhanced Support Facility by using the flash archive.
Please refer to "6.3 Flash Archive Installation".
- 2) Install the Logical Domains Manager.
For more information, please refer to "SPARC Enterprise Oracle VM Server for SPARC Guide".
- 3) Reboot the system.
- 4) Set up the control domain.
For more information, please refer to "SPARC Enterprise Oracle VM Server for SPARC Guide".
- 5) Set up the guest domain by the control domain.
For more information, please refer to "SPARC Enterprise Oracle VM Server for SPARC Guide".

6.3.2.5 Building Procedure for the Guest Domain

Install the OS and Enhanced Support Facility into the guest domain you set up.
Please refer to "6.3 Flash Archive Installation".

6.3.3 Setting the Enhanced Support Facility environment after flash archive installation

After flash archive installation is finished, the Enhanced Support Facility environment needs to be set as shown below:

Table 6.3.3-1 Environment Settings List

No.	Component	Description
1	Tape Driver Definition Tool	If the tape device is not recognized after installation, take the following setting steps: <pre># /var/opt/FJSVdcnf/bin/fjcnfset st<Return></pre> You do not have to do the above if you installed this software according to the procedure in 1) in Section 6.3.

6.3.4 Notes on flash archiving

When applying flash-archived Enhanced Support Facility, note the following:

Table 6.3.4-1 Notes List

No.	Item	Description
1	Symptom	The log of the master system is not deleted but is taken over. Note this when checking the log.
	Applicable model	All models
	Applicable package	All packages
	Displayed message	None
	Cause	None
	Preventive measures	None
2	Symptom	A tape device may not be recognized automatically.
	Applicable model	All models
	Applicable package	FJSVdcnf
	Displayed message	None
	Cause	When a flash archive is used, the environment of the master system is taken over. If a unit supported by the tape definition tool is not connected to the master system or different types of units are connected to the master system and applied machine, the setting command needs to be reexecuted.
	Preventive measures	If the tape device is not recognized after installation, take the following setting steps: <code># /var/opt/FJSVdcnf/bin/fjcnfset st<Return></code> You do not have to do the above if you installed this software according to the procedure in 1) in Section 6.3.
3	Symptom	Executing "pkgchk -n" displays ERROR.
	Applicable model	None
	Applicable package	FJSVdef
	Displayed message	ERROR: /var/spool/cron/crontabs/root group name <sys> expected <other> actual
	Cause	The above file is a clone setting file. After ESF application is finished, new clone settings are made in the /var/spool/cron/crontabs/root file. This changes the group name from <sys> to <other>. This is why ERROR is output.
	Preventive measures	None
4	Symptom	When the system starts for the first time after application, a model may be mistakenly recognized and displayed.
	Applicable model	All models
	Applicable package	Packages related to machine administration
	Displayed message	<code>/etc/rc2.d/S30SMAWubft: disable FJSVmadm SES/SAF-TE monitoring ...done. /etc/rc2.d/S30SMAWubft: cleanup SES/SAF-TE processor device links...done. /etc/rc2.d/S30SMAWubft: updating HW_CONFIG data base...done. /etc/rc2.d/S30SMAWubft: start UPS BBU Fan Temperature Daemon...done. Configuring network interface addresses: igb0 hme0.</code>

No.	Item	Description
	Cause	When the system starts for the first time after installation using a flash archive, WSA executes the model check command of the machine administration before machine administration operation begins, and mistakenly recognizes the model.
	Preventive measures	Reboot the system to clear the problem.

6.4 Specifying a Component Group for Installation

For a normal installation, you would install all the packages provided for the target system. In some cases, however, you may wish to install only the required minimum number of packages for a certain requirement level. In such cases, this software provides for installation of packages defined in a component group. You can choose packages to install by specifying a component group based on system requirements.

This appendix explains how to specify an installation component group.

Note) If CORE or BASIC is specified for the component group, some components supplied as functions of this software are not installed.

6.4.1 Notes on using the component group specification option

- Update installation cannot be used.
Delete this software, then perform initial installation.
To delete this software, save any environment settings files if as required
- This option does not support Solaris Live Upgrade.
Use the normal installation procedure.

6.4.2 Component groups

The components to be installed are determined by specifying a component group.

The following two component groups are provided by this software.

If a component group is not specified, the FULL component group will be installed.

Table 6.4.2-1 Component Groups List

Component-group	Description
CORE	Component group of basic functions of Enhanced Support Facility. Mandatory components for system operation of system such as DR command, Machine Administration, Server Default Configuration, System Data Output Tool, Crash Dump Assistant, and Auto Dump Analyze Tool will be installed. These components make hardware and software operation more reliable.
BASIC	CORE component group plus user utility components such as automatic power control.
FULL	BASIC component group plus HRM-S system operation support function. All components including Machine Administration, HRM-S system operation support function will be installed.

See Chapter 12, "About an installation and an individual installation which specifies the component group of Enhanced Support Facility" in the "Security System Building Guide Enhanced Support Facility" for more detail information.

Refer to Appendix C, "Component Programs by Model," for information on the packages that are installed in each component group.

Note) The component groups are mutually exclusive; only one can be selected at a time.

6.4.3 Specifying a component group for installation

To specify a component group for installation, use the following component group specification option.

```
Format  esfadd [-O COMPONENT-GROUP]
```

For *COMPONENT-GROUP*, specify the component group to be installed.

Execution example (SPARC Enterprise T5120, Solaris 10 , and BASIC component installation)

- 1) To perform installation, specify the option in the esfadd command.

```
# bin/esfadd -O BASIC <Return>
```

The following message is displayed.

```
Enhanced Support Facility 3.2 will be installed.

Platform: SUNW,SPARC-Enterprise-T5120
OS Release: Solaris 10
COMPONENT GROUP: BASIC

Do you want to continue with this installation? [yes or no ?]: yes <Return>
```

For notes on installation, see Section 5.2.3, "Instructions".

Note 1

The following message is displayed when a package component which is not included in the specified component group, is installed on the system.

```
Enhanced Support Facility 3.2 will be installed.

Platform: SUNW,SPARC-Enterprise-T5120
OS Release: Solaris 10
COMPONENT GROUP: BASIC

NOTE: The following package(s) not included in the specified component group
is installed.
PACKAGENAME1 PACKAGENAME2

Do you want to continue with this installation? [yes or no ?]:
```

Type "no" to exit the installation and check the system environment.

If the package has been installed by other software, there is no problem about this message. Please continue the installation.

- 2) To check the version of each installed package, use the `esfver` command (as in a normal installation).

```
# /opt/FJSVbse/bin/esfver -l <Return>
```

The version of each package is displayed.

```
esfver: INFO: Individual Packages Version of already installed Enhanced
Support Facility.
COMPONENT-GROUP: BASIC
PKGNAME      VERSION      REVISION
-----
FJSVbse      3.2          2011.01.1300
              :
              :
FJSVpmgc     1.1          2008.07.0100
-----
```

- 3) To delete a package, use the `esfrm` command (as in a normal installation). No options are required.

```
# bin/esfrm <Return>
```

The following message is displayed. Type "all", "part" or "no".

```
Enhanced Support Facility 3.2 will be removed.
COMPONENT-GROUP: BASIC

FJSVbse      Enhanced Support Facility Information Management
              (sparc) 3.2,REV=2011.01.1300
              :
              :
FJSVpmgc     Patch Management Tool - fjcollect command
              (sparc) 1.1,REV=2008.07.0100

There is a possibility to cause problem in the system when the
packages where "*" adheres to the head of the package name is deleted.

Please input "all" when you want to remove all packages, input "no"
when you want to interrupt the uninstallation, or input "part" when
you want to remove only packages where "*" does not adhere.

Please select. [no, all or part]:
```

6.4.3.1 Flowchart of Building Oracle VM Server for SPARC/Logical Domains (LDom)s Environment

The following describes how to install the Enhanced Support Facility by specifying component groups to create Oracle VM Server for SPARC/Logical Domains (LDom)s.

This chapter explains the installation steps.

- 1) The installation procedure to install the Enhanced Support Facility into the control domain is described in "6.4.3.2 Building Procedure for the Control Domain".
- 2) The installation procedure to install the Enhanced Support Facility into the guest domain is described in "6.4.3.3 Building Procedure for the Guest Domain".

6.4.3.2 Building Procedure for the Control Domain

Install the Enhanced Support Facility by specifying component groups to install the Logical Domains Manager.

- 1) Install the OS into the mainframe.
For more information, please refer to "SPARC Enterprise Server Hardware Platform Guide".
- 2) Install the Enhanced Support Facility by specifying component groups to install the Logical Domains Manager.
Please refer to "6.4 Specifying a Component Group for Installation".
- 3) Install the Logical Domains Manager.
For more information, please refer to "SPARC Enterprise Oracle VM Server for SPARC Guide".
- 4) Reboot the system.
- 5) Set up the control domain.
For more information, please refer to "SPARC Enterprise Oracle VM Server for SPARC Guide".
- 6) Set up the guest domain by the control domain.
For more information, please refer to "SPARC Enterprise Oracle VM Server for SPARC Guide".

6.4.3.3 Building Procedure for the Guest Domain

- 1) Install the OS into the guest domain.
For more information, please refer to "SPARC Enterprise Oracle VM Server for SPARC Guide".
- 2) Install the OS and Enhanced Support Facility into the guest domain you set up.
Please refer to "6.4 Specifying a Component Group for Installation".

6.5 Solaris Live Upgrade

- This product can be upgraded using by Solaris Live Upgrade.
Using an unsupported version or incorrectly following the procedure may damage the system. Proceed carefully.
- Before starting the upgrade operation, be sure to confirm the procedure in the Solaris Installation Guide issued by Oracle.
- For notes on the Enhanced Support Facility installation operation, see Section 4.3 "Notes".

6.5.1 Upgrade Procedure

The following shows how to update Enhanced Support Facility.

Regarding the details of each procedure, please refer to the sections/clauses within each frame below.

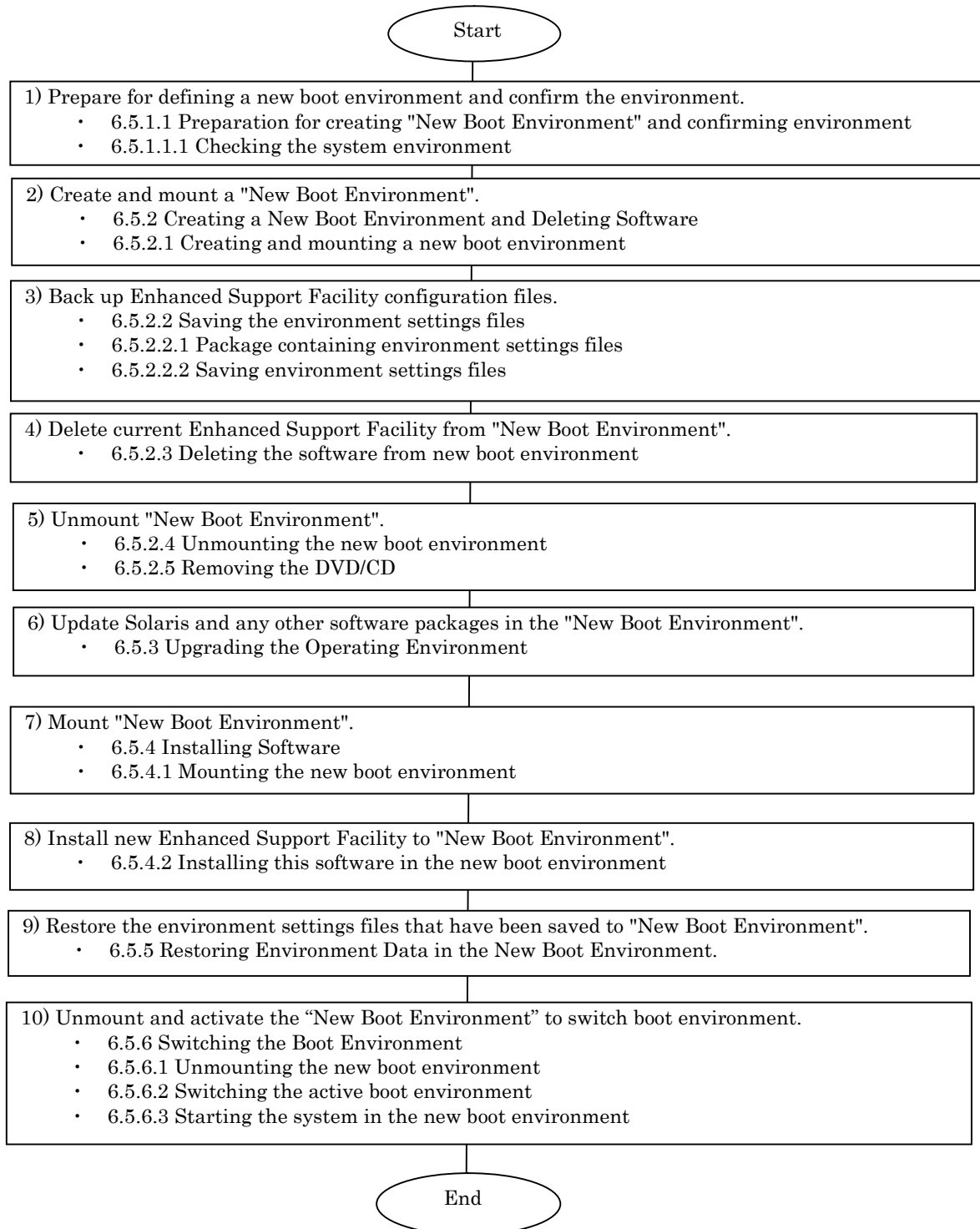


Figure 6.5.1-1 Solaris Live Upgrade Flowchart

6.5.1.1 Preparation for creating "New Boot Environment" and confirming environment

6.5.1.1.1 Checking the system environment

- 1) Check the version of Enhanced Support Facility installed on the running system.

```
# /opt/FJSVbse/bin/esfver <Return>
```

Example: When Enhanced Support Facility 3.0 is installed:

```
esfver: INFO: Integrated Version of already installed Enhanced Support  
Facility.  
VERSION=3.0 REVISION=2006.12.1200,
```

6.5.2 Creating a New Boot Environment and Deleting Software

Use the new boot environment to temporarily delete all Enhanced Support Facility components before upgrading the operating system. Be sure to first save the environment settings file of each component before deleting the components.

6.5.2.1 Creating and mounting a new boot environment

- 1) Use the Solaris Live Upgrade to create a new boot environment.
Note) For information about installing Solaris Live Upgrade and creating a new boot environment, refer to the documents provided by Oracle.

- 2) Mount the new boot environment.

```
# /usr/sbin/lumount ALTERNATIVE <Return>
```

ALTERNATIVE: Indicates the new boot environment name.

- 3) The mount point is reported.

```
/.alt.ALTERNATIVE
```

6.5.2.2 Saving the environment settings files

6.5.2.2.1 Package containing environment settings files

Check to see if any of the installed packages contain environment settings files. If installed packages contain environment settings files, save the files.

For the packages that contain environment settings files, see the following:

Table 6.5.2.2.1-1 Environment Settings List

Package name	Environment settings file
FJSVrlib FJSVragt FJSVrmaos	The savelogs command is provided to save/restore the environment setting file.
FJSVapcs	/var/opt/FJSVapcs/*

6.5.2.2.2 Saving environment settings files

Save the SCF/SCSI Fault LED support option setting files (for SPARC Enterprise M series).

```
# cd /.alt.ALTERNATIVE <Return>
# ls ./etc/opt/FJSVhwr/adrc.conf | cpio -o -O save_file name <Return>
```

When machine administration or Remote Support is used, use the savelogs command to save the environment settings file of the packages that make up machine administration and Remote Support.

```
# /usr/sbin/FJSVmadm/savelogs -mo save_file_directory <Return>
```

When an automatic power control system is used, save the environment settings file of the FJSVapcs package.

```
# cd / <Return>
# find /var/opt/FJSVapcs/ -print -depth | /usr/bin/cpio -o -O save_file
<Return>
```

6.5.2.3 Deleting the software from new boot environment

To delete Enhanced Support Facility from the new boot environment, delete it using the DVD/CD containing the same version of Enhanced Support Facility that is currently installed.

- 1) Mount the DVD/CD.

The mounting procedure depends on the model.

For details of mounting the DVD/CD, see Appendix F, "Mounting the DVD/CD".

- 2) Delete Patch 914562-02.

You need to delete Patch 914562-01 before executing 'esfrm'.

Please follow the steps below.

To know what to do if you executed 'esfrm' without deleting Patch 914562-01, please refer to "Appendix D.2.2".

```
# showrev -p | grep 914562-01 <Return>
Patch: 914562-01 Obsoletes: Requires: Incompatibles: Packages: FJSVdmp
# patchrm -R /.alt.ALTERNATIVE 914562-01 <Return>
```

- 3) Delete the Enhanced Support Facility from the new boot environment.

Use the esfrm command from the DVD/CD containing the same version of Enhanced Support Facility that is currently installed on the new boot environment.

```
# bin/esfrm -R /.alt.ALTERNATIVE <Return>
```

/.alt.ALTERNATIVE: Indicates the boot environment mount point.

Note 1: The mount point must not be followed by a slash (/).

Error: # bin/esfrm -R /.alt.ALTERNATIVE/ <Return>

The message below appears. Type "all", "part" or "no".

```
Enhanced Support Facility 3.0 will be removed.

FJSVbse      Enhanced Support Facility Information Management
             (sparc) 3.0,REV=2006.12.1200
             :
             :
FJSVparam    System Parameter Diagnosis
             (sparc) 1.1,REV=2005.01.1100

There is a possibility to cause problem in the system when the
packages where "*" adheres to the head of the package name is deleted.

Please input "all" when you want to remove all packages, input "no"
when you want to interrupt the uninstallation, or input "part" when
you want to remove only packages where "*" does not adhere.

Please select. [no,all or part]:
```

The following message will be displayed. Type "yes" to proceed

```
Solaris Live Upgrade can not be used to upgrade from Enhanced Support
Facility 2.3 or earlier. Certain Enhanced Support Facility 2.3 or
earlier packages may not support remote un-installation (esfrm -R),
and may cause damage to the system during un-installation.
Do not proceed with removal of Enhanced Support Facility if revision 2.3 or earlier
is installed.

Do you want to continue with the removal of Enhanced Support Facility from the
alternate boot environment? [yes or no?]:
```

Note 2: Please select "part" if the following message is displayed.

Please select "part" not to remove packages having an asterisk (*).

A package with an asterisk (*) at the head of its name has been installed with a product other than Enhanced Support Facility.

If you select "all", packages having an asterisk (*) are removed and the behavior of products other than Enhanced Support Facility is affected by this.

```
Enhanced Support Facility 3.0 will be removed.

FJSVbse      Enhanced Support Facility Information Management
             (sparc) 3.0,REV=2006.12.1200
*FJSVwvcnf   WWW Server for Admin View
             (sparc) 2.0.3,REV=2002.04.1800
             :
             :
FJSVdmp      Crash Dump Assistant
             (sparc) 1.5,REV=2002.11.2700

There is a possibility of system problems when package names marked "*" are
deleted.

Please input "all" when you want to remove all packages. input "no"
when you want to interrupt the uninstall, or input "part" when
you want to remove only packages not marked by "*".

Please select. [no, all or part]:
```

Note 3: The following message may appear but can be ignored.

The following message may be displayed when installing FJSVdef packages, but the removal will complete normally.

```
cron may not be running - call your system administrator
```

6.5.2.4 Unmounting the new boot environment

- 1) Move to the root directory.

```
# cd / <Return>
```

- 2) Unmount the new boot environment.

```
# /usr/sbin/luumount ALTERNATIVE <Return>
```

ALTERNATIVE: Indicates the new boot environment name.

6.5.2.5 Removing the DVD/CD

- 1) Eject the Enhanced Support Facility DVD/CD.

6.5.3 Upgrading the Operating Environment

Use Solaris Live Upgrade to update the system operating environment.

Note) For information about updating Solaris, refer to the documents provided by Oracle.

6.5.4 Installing Software

Install Enhanced Support Facility 3.2 in the new boot environment after upgrading the operating system.

6.5.4.1 Mounting the new boot environment

- 1) Mount the newly created boot environment.

```
# /usr/sbin/lumount ALTERNATIVE <Return>
```

ALTERNATIVE: Indicates the new boot environment name.

- 2) The mount point is reported.

```
/.alt.ALTERNATIVE
```

6.5.4.2 Installing this software in the new boot environment

Use the Enhanced Support Facility version 3.2 DVD/CD to install Enhanced Support Facility on the new boot environment.

- 1) Mount the DVD/CD.

The mounting procedure depends on the model.

For details of mounting the DVD/CD, see Appendix F, "Mounting the DVD/CD".

- 2) Install the Enhanced Support Facility 3.2 in the new boot environment.

```
# bin/esfadd -R /.alt.ALTERNATIVE <Return>
```

/.alt.ALTERNATIVE: Indicates the new boot environment mount point.

Note1: The mount point must not be followed by a slash (/).

Error: # bin/esfadd -R /.alt.ALTERNATIVE/ <Return>

Messages similar to the following appears. Confirm the displayed information. If the information is correct, type "yes".

Example: For Enhanced Support Facility 3.2 on SPARC Enterprise T5120:

```
Enhanced Support Facility 3.2 will be installed.

INSTALL-ROOT: /.alt.ALTERNATIVE
Platform: SUNW,SPARC-Enterprise-T5120
OS Release: Solaris 10

Do you want to continue with this installation? [yes or no ?]:
```

Next, the system confirms that the -R option has been specified.Type "yes".

```
NOTE: -R option

Do you want to continue with this installation? [yes or no ?]:
```

Note 2: If the message shown below is displayed, enter "n" to quit processing.

If the following message appears during installation , type "n" to stop installation processing.

This message will be displayed when the *<pkginst>* package installation fails.

For more information, please refer to "D.1.2 Resolution of problems occur when package is installed(II)".

```
A version of the <pkginst> package is already installed on this machine.
Current administration does not allow new instances of an existing package
to be created, nor existing instances to be overwritten.

No changes were made to the system.

There are n more packages to be installed.

Do you want to continue with installation [y,n,?]
```

Note 3: The following message may appear but can be ignored.

The following message may be displayed when installing FJSVdef packages, but the installation will complete normally.

```
cron may not be running - call your system administrator
```

3) Unmount the DVD/CD.

```
# cd / <Return>
# /usr/sbin/umount /cdrom <Return>
```

or

```
# cd / <Return>
# /usr/sbin/umount /cdrom/cdrom0 <Return>
```

4) Eject Enhanced Support Facility 3.2 DVD/CD.

5) When Enhanced Support Facility Manuals & Patches is attached, insert Enhanced Support Facility Manuals & Patches into the DVD/CD drive to apply patches.

If you cannot see the contents of the DVD/CD, please refer to "Appendix F Mounting the DVD/CD" to mount the DVD/CD again.

When Enhanced Support Facility Manuals & Patches is not accompanied, you do not have to take step 6) and the remaining steps.

- 6) Go to the directory where DVD/CD has been mounted and then execute the `esfpatchadd` command with the following procedure.

```
# cd /cdrom/ESFREMCSF <Return>
# bin/esfpatchadd -R /.alt.ALTERNATIVE <Return>
```

or

```
# cd /cdrom/cdrom0/ESFREMCSF <Return>
# bin/esfpatchadd -R /.alt.ALTERNATIVE <Return>
```

`/.alt.ALTERNATIVE`: Indicates the new boot environment mount point.

Note 4: The mount point must not be followed by a slash (/).

Error: # bin/esfpatchadd -R /.alt.ALTERNATIVE/ <Return>

Either of the following confirmation messages will be displayed. Enter "yes" to continue the installation.

```
Enhanced Support Facility 3.2 correction patches will be applied.

Platform: SUNW,SPARC-Enterprise-T5120
OS Release: Solaris 10

Do you want to continue with this installation? [yes or no ?]: yes
```

- 7) Eject Enhanced Support Facility Manuals & Patches DVD/CD.

6.5.5 Restoring Environment Data in the New Boot Environment

Restore the environment settings files for packages saved according to Section 6.5.2.2, "Saving the environment settings files". Perform this operation only if you saved environment settings files.

Restore the environment settings files for Web-Based Admin View/WWW Server for Admin View after starting the system in the new boot environment.

Restore the SCF/SCSI Fault LED support option setting files (for SPARC Enterprise M series).

```
# cd /.alt.ALTERNATIVE <Return>
# cpio -iu -I save_file <Return>
# chown root ./etc/opt/FJSVhwr/adrc.conf <Return>
# chgrp root ./etc/opt/FJSVhwr/adrc.conf <Return>
```

Restore the settings file for the automatic power control system.

```
# cd / <Return>
# find var/opt/FJSVapcs/ -print -depth | cpio -pud /.alt.ALTNATIVE
```

Restore the settings files for machine administration, and Remote Support.

```
# /usr/sbin/FJSVmadm/savelogs -r -R /.alt.ALTERNATIVE save_file_directory
<Return>
```

6.5.6 Switching the Boot Environment

6.5.6.1 Unmounting the new boot environment

- 1) Move to the root directory.

```
# cd / <Return>
```

- 2) Use the `luumount` command to unmount the new boot environment.

```
# /usr/sbin/luumount ALTERNATIVE <Return>
```

ALTERNATIVE: Indicates the new boot environment name.

6.5.6.2 Switching the active boot environment

- 1) Use the `luactivate` command to switch from the active boot environment to the new one.

```
# /usr/sbin/luactivate ALTERNATIVE <Return>
```

6.5.6.3 Starting the system in the new boot environment

After switching the active boot environment, the system restarts with the new boot environment. Before this processing, confirm that all jobs in the running system have terminated.

- 1) Reboot the system.

```
# /usr/sbin/shutdown -y -g0 -i6 <Return>
```

Note) If the system is restarted with the reboot command, the boot environment will not be switched correctly. For query messages displayed after the boot environment has been switched, refer to the documents provided by Oracle.

6.6 Unified Installer

The unified installer is a function of Systemwalker Resource Coordinator. It can use a customized version of Solaris JumpStart via a network to automatically install the Solaris OS, middleware such as Enhanced Support Facility, and drivers.

The unified installer can be used not only for initial installation but also for installation of additional nodes and products.

The unified installer thus simplifies installation in a multiple-node system.

If you install Enhanced Support Facility by using the unified installer, please be sure to install Enhanced Support Facility 3.2.

For the features of the unified installer and details on how to use it, refer to the "Systemwalker Resource Coordinator User's Guide for Unified Installer".

Appendix A Command Reference

A.1 esfadd (1M)

NAME

esfadd - Install Enhanced Support Facility onto the system

SYNOPSIS

esfadd [-c] [-R *mountpoint*] [-O *component-group*] [-d *directory*]

DESCRIPTION

esfadd determines the system platform automatically and installs Enhanced Support Facility onto the system using the Enhanced Support Facility media(DVD/CD).If an older versions of Enhanced Support Facility is already installed on the system, this command will upgrade them.

OPTIONS

The following options are available:

-c

Display the current version and the new version of the packages to be updated.

-R *mountpoint*

Enhanced Support Facility will be installed in the Boot Environment specified by *mountpoint*.

-O *component-group*

Specifying a Component Group for Installation. If the -O option isn't specified, Full component group will be installed.See Section 6.4, "Specifying a Component Group for Installation" for more details.

-d *directory*

Specify the *directory* where the packages of Enhanced Support Facility exist with a full pathname.

The package directories are as follows:

Abbreviated names of machine models are used in the table below. For more information, please refer to "Notations Used" in "Preface".

Table A.1-1 Package Storage Directories List

Abbreviation	Solaris OS	package directory
LE	10	<i>/mnt/Platform/LE/10</i>
CW	10	<i>/mnt/Platform/CW/10</i>

/mnt: Mount Point

Note) The following messages are displayed when the model is wrong as correspond the package directory and it ends.

```
esfadd: ERROR: The specified source directory is incorrect.
```

EXIT STATUS

The following exit values are returned:

- 0 Successful execution.
- 1 Fatal error.
- 2 Usage or Warning.
- 3 Interruption.
- 4 Administration.
- 10 Reboot after installation of all packages.
- 20 Reboot after installation of this package.

SEE ALSO

esfrm(1M), esfpatchadd(1M), pkgrm(1M), pkgadd(1M)

NOTES

- When the `-c` option is specified, Enhanced Support Facility will not be installed. This option is used to check for previous revisions of Enhanced Support Facility installed on the system.
- When two or more packages are installed, the following messages are displayed, and the installation is ended. Please reinstall Enhanced Support Facility after restoring the system. (Refer to appendix D.1.1.)

```
esfadd: ERROR: Two or more instances of the following package(s) are existing on
the system.
PACKAGE PACKAGE.2

Exit installation.
```

A.2 esfrm (1M)

NAME

esfrm - Remove Enhanced Support Facility from the system

SYNOPSIS

esfrm [-n] [-R *mountpoint*]

DESCRIPTION

esfrm removes a previously installed Enhanced Support Facility from the system.

The default state for the command is in interactive mode, meaning that prompt messages are given during processing to allow the administrator to confirm the actions being taken for the removal of the Enhanced Support Facility. Non-interactive mode can be requested with the -n option.

When this command is invoked, the package list to be removed is displayed, and then the prompt with the input "all" displayed. The esfrm command operates as follows after the prompt.

1. For the package(s) with the "*" (warning) mark is displayed in the package list, exist.
 - "all" : The esfrm command removes all packages in the list.
 - "no" : The esfrm command terminates, and does not remove any Enhanced Support Facility packages.
 - "part" : The esfrm command removes all package(s) without the "*" (warning) displayed in the list.
2. For the package(s) with the "*" (warning) mark is displayed in the package list, do not exist.
 - "all" : The esfrm command removes all packages in the list.
 - "no" : The esfrm command terminates, and does not remove any Enhanced Support Facility packages.
 - "part" : Same result as "all".

OPTIONS

The following option is available:

-n

If this option is specified, Enhanced Support Facility is removed from the system in non-interactive mode.

Packages are removed compulsorily even if those packages require interaction.

-R *mountpoint*

Enhanced Support Facility will be removed from the Boot Environment specified by the *mountpoint*.

EXIT STATUS

The following exit values are returned:

- 0 Successful execution.
- 1 Fatal error.
- 2 Usage or Warning
- 3 Interruption.
- 4 Administration.
- 10 Reboot after removal of all packages.
- 20 Reboot after removal of this package.

SEE ALSO

esfadd(1M), pkgrm(1M)

NOTES

- Be aware that other optional products may have dependencies on the packages in Enhanced Support Facility. In this case, esfrm will display WARNING messages as the result of dependency checking and ask you to verify the removal of the package. Do not remove any package on which other software products depend, and type "y" to continue execution. Note that if the -n option is specified, such important dependencies will not be checked.
- A "*" (warning) mark will be displayed when a package installed on the system is newer than the package on the DVD/CD. Be careful when removing the package because the package cannot be reinstalled with the DVD/CD. There may be other products on the system that require the package and removing the package may cause serious problems.

A.3 esfver (1M)

NAME

esfver - Display the version of the installed Enhanced Support Facility

SYNOPSIS

esfver [-l] [-R *mountpoint*]

DESCRIPTION

The esfver command displays the version number of the Enhanced Support Facility installed on the system. With the -l option, it displays the version number of each package. Regarding the packages of the Enhanced Support Facility to be installed on the system, please refer to "Appendix C Component Programs by Model".

OPTIONS

The following option is available:

-l

The version of each package included in the Enhanced Support Facility is displayed.

-R *mountpoint*

The version of Enhanced Support Facility installed in Boot Environment specified by *mountpoint* will be displayed.

EXIT STATUS

The following exit values are returned:

- 0 Successful execution.
- 1 Fatal error.
- 2 Usage.

SEE ALSO

esfadd(1M), esfrm(1M), pkgparam(1M)

NOTES

If two or more packages are installed on the system, the following messages appear.

After recovering the system, re-install the Enhanced Support Facility. (Refer to the Appendix D.1.1)

```
# /opt/FJsvbse/bin/esfver

esfver: INFO: Integrated Version of already installed Enhanced Support Facility.
VERSION=3.2 REVISION=2011.01.1300,

ESF_PATCH_VERSION = 3.2A00_20110113

-- WARNING --
Two or more instances of the following packages have been installed on the system.
PACKAGE PACKAGE.2
#
```


If no installed packages exist, the following messages appear.

After a list of existing packages is displayed, a list of non-existing packages is displayed.

In addition, regarding the packages of the Enhanced Support Facility to be installed on the system, please refer to "Appendix C Component Programs by Model".

```
# /opt/FJSVbse/bin/esfver -l

esfver: INFO: Individual Packages Version of already installed Enhanced Support Facility.
PKGNAME      VERSION      REVISION
-----
FJSVbse      3.2          2011.01.1300
FJSVdropl    1.0          2006.08.0800
:
:
FJSVhrmse    3.5.9        2010.12.0700
Fail to get information of FJSVparam.
-----
ESF PATCH_VERSION = 3.2A00_20110113

#
```

Note) Refer to Appendix D.1.2 if you want to restore any packages.

EXAMPLES

EXAMPLE1

```
# /opt/FJSVbse/bin/esfver

esfver: INFO: Integrated Version of already installed Enhanced Support Facility.
VERSION=3.2 REVISION=2011.01.1300,

ESF PATCH_VERSION = 3.2A00_20110113

#
```

EXAMPLE2 Example of displaying each package.

```
# /opt/FJSVbse/bin/esfver -l

esfver: INFO: Individual Packages Version of already installed Enhanced Support Facility.
PKGNAME      VERSION      REVISION
-----
FJSVbse      3.2          2011.01.1300
FJSVdropl    1.0          2006.08.0800
:
:
FJSVhrmse    3.5.9        2010.12.0700
FJSVdcnf     1.2          2006.08.2900
-----
ESF PATCH_VERSION = 3.2A00_20110113

#
```

A.4 esfpatchadd (1M)

NAME

esfpatchadd - Applies patches to installed Enhanced Support Facility

SYNOPSIS

esfpatchadd [-R *mount_point*] [-d *directory*]

DESCRIPTION

esfpatchadd is a command that installs patches for the Enhanced Support Facility collectively. This command is used when you install patches from the Manuals & Patches media (DVD/CD).

OPTIONS

The following options are available:

-R *mountpoint*

Enhanced Support Facility will be installed into the Boot Environment specified by *mountpoint*.

-d *directory*

Specify the *directory* where the patches of Enhanced Support Facility are stored.

A full pathname should be given to the directory.

The directories containing the patches are as follows.

Abbreviated names of machine models are used in the table below. For more information, please refer to "Notations Used" in "Preface".

Table A.4-1 Patch Storage Directories List

Abbreviation	Solaris OS	Patch directory
LE	10	<i>/mnt</i> /ESFREMCSPP/Platform/LE/10
CW	10	<i>/mnt</i> /ESFREMCSPP/Platform/CW/10

/mnt: Mount Point

Note) The command terminates with the following message when the right directory for the model is not specified.

```
esfpatchadd: ERROR: The specified source directory is incorrect.
```

EXIT STATUS

The following exit values are returned:

- 0 Successful execution.
- 1 Fatal error.
- 2 Usage or Warning.
- 3 Interruption.

SEE ALSO

esfadd(1M), esfrm(1M), pkgadm(1M), pkgadd(1M), patchadd(1M)

Appendix B Messages

In this chapter, the meaning of messages displayed when the `esfadd(1M)` command, `esfrm(1M)` command, `esfver(1M)` command, and `esfpatchadd(1M)` command are executed, and what action you can take when the messages are displayed are explained.

B.1 esfadd(1M)

In this chapter, the meaning of messages displayed when the `esfadd(1M)` command is executed, and what action you can take when the messages are displayed are explained. Please refer to "A.1 `esfadd(1M)`" about the details of the `esfadd(1M)` command.

B.1.1 Notice Messages

In this chapter, notice messages of the `esfadd(1M)` command are explained.

Message	Installation of the bundled driver starts.
Meaning	Displayed when the driver bundled with Enhanced Support Facility is installed. FUJITSU PCI GigabitEthernet and FUJITSU ULTRA LVD SCSI Host Bus Adapter Driver are installed.
Workaround	None.

Message	<code>esfadd: INFO: This software does not need to be updated.</code> <code>esfadd: INFO: Enhanced Support Facility < VERSION > is already installed.</code>
Meaning	The same version as Enhanced Support Facility you try to install or newer version of Enhanced Support Facility is already installed. The version of installed Enhanced Support Facility is displayed in <code>< VERSION ></code> .
Workaround	None.

Message	<pre>!!!!!!!!!!!!!!!!!!!!!!!!!!!!!! !!! IMPORTANT NOTICE !!! !!!!!!!!!!!!!!!!!!!!!!!!!!!!!! The Remote service which uses the REMCS function appended to PRIMEPOWER is required for the quick recovery from the failure of your system. Please execute the following command after the reboot, by the root(superuser). /usr/sbin/FJSVmadm/remcsmain</pre>
Meaning	The services related to REMCS are explained.
Workaround	Execute the command <code>(/usr/sbin/FJSVmadm/remcsmain)</code> when the REMCS service is used. No action is required when the REMCS service is not used.

Message	Enhanced Support Facility < VERSION > will be installed. Platform: < PLATFORM > OS Release: < Solaris OS > COMPONENT GROUP: < COMPONENT GROUP > Do you want to continue with this installation? [yes or no ?]:
Meaning	Displayed when the -O option of the esfadd command is entered correctly and the installation is started.
Workaround	Please enter either "yes" or "no".

Message	Enhanced Support Facility < VERSION > will be installed. Platform: < PLATFORM > OS Release: < Solaris OS > Do you want to continue with this installation? [yes or no ?]:
Meaning	Displayed when the esfadd command is entered and the installation is started.
Workaround	Please enter either "yes" or "no".

Message	Enhanced Support Facility < VERSION > will be installed. Source Directory: < MOUNTPOINT >/Platform/< PLATFORM >/< Solaris OS > Platform: < PLATFORM > OS Release: < Solaris OS > Do you want to continue with this installation? [yes or no ?]:
Meaning	Displayed when the -d option of the esfadd command is entered correctly and the installation is started.
Workaround	Please enter either "yes" or "no".

Message	Enhanced Support Facility < VERSION > will be installed. INSTALL-ROOT: < MOUNTPOINT > Platform: < PLATFORM > OS Release: < Solaris OS > Do you want to continue with this installation? [yes or no ?]:
Meaning	Displayed when the -R option of the esfadd command is entered correctly and the installation is started.
Workaround	Please enter either "yes" or "no".

Message	<p>Check the package that will be updated.</p> <p>Platform: < PLATFORM > OS Release: < Solaris OS ></p> <p>esfadd: INFO: This software is not installed on the system.</p>
Meaning	Displayed when the -c option of the esfadd command is entered and Enhanced Support Facility is not installed.
Workaround	None.

Message	<p>Enhanced Support Facility will be updated to Enhanced Support Facility < VERSION ></p> <p>Platform: < PLATFORM > OS Release: < Solaris OS ></p> <p>Do you want to continue with this update? [yes or no ?]:</p>
Meaning	Displayed when the esfadd command is entered on the system where Enhanced Support Facility is installed and the update installation is started.
Workaround	Please enter either "yes" or "no".

Message	Update of Enhanced Support Facility was successful
Meaning	Indicates that updateinstall finished normally.
Workaround	None.

Message	Installation of Enhanced Support Facility was successful.
Meaning	Indicates that installation finished normally.
Workaround	None.

Message	<p>Check the package that will be updated.</p> <p>Platform: < PLATFORM > OS Release: < Solaris OS ></p> <table border="0"> <thead> <tr> <th>PKGNAME</th> <th>CURRENT</th> <th>VERSION</th> <th>FUTURE</th> <th>VERSION</th> </tr> </thead> <tbody> <tr> <td colspan="5">-----</td> </tr> <tr> <td>FJSVbse</td> <td><CURRENT></td> <td>REV=<VERSION></td> <td><FUTURE></td> <td>REV=<VERSION></td> </tr> <tr> <td>:</td> <td>:</td> <td>:</td> <td>:</td> <td>:</td> </tr> <tr> <td><PKGNAME></td> <td><CURRENT></td> <td>REV=<VERSION></td> <td><FUTURE></td> <td>REV=<VERSION></td> </tr> <tr> <td colspan="5">-----</td> </tr> </tbody> </table> <p>Please save data according to the INSTALLATION GUIDE if the package(s) for which the save of data is necessary exist in the above-mentioned package(s).</p>	PKGNAME	CURRENT	VERSION	FUTURE	VERSION	-----					FJSVbse	<CURRENT>	REV=<VERSION>	<FUTURE>	REV=<VERSION>	:	:	:	:	:	<PKGNAME>	<CURRENT>	REV=<VERSION>	<FUTURE>	REV=<VERSION>	-----				
PKGNAME	CURRENT	VERSION	FUTURE	VERSION																											

FJSVbse	<CURRENT>	REV=<VERSION>	<FUTURE>	REV=<VERSION>																											
:	:	:	:	:																											
<PKGNAME>	<CURRENT>	REV=<VERSION>	<FUTURE>	REV=<VERSION>																											

Meaning	The -c option of the esfadd command is entered and each package version number of Enhanced Support Facility is displayed.																														
Workaround	For packages whose environment setting file needs to be copied, please copy the environment setting file																														

	by seeing "5.3.4 Saving the environment setting file".
--	--

Message	<p>Enhanced Support Facility < VERSION > will be installed after the following packages are removed.</p> <p style="padding-left: 40px;">Packages: < PKGNAME > < PKGNAME.2 ></p> <p style="padding-left: 40px;">Platform: < PLATFORM ></p> <p style="padding-left: 40px;">OS Release: < Solaris OS ></p> <p>Do you want to continue with this installation? [yes or no ?]:</p>
Meaning	<p>Packages included in Enhanced Support Facility existed when the esfadd command is entered. Enhanced Support Facility (FJSVbse package) does not exist, therefore, install Enhanced Support Facility after removing the displayed packages.</p>
Workaround	<p>Please enter "no" to exit, and after executing "esfadd -c" to confirm the package version number you are going to update, install Enhanced Support Facility.</p>

Message	<p>Enhanced Support Facility < VERSION > will be installed after the following packages are removed.</p> <p style="padding-left: 40px;">Packages: < PKGNAME > < PKGNAME.2 ></p> <p style="padding-left: 40px;">Platform: < PLATFORM ></p> <p style="padding-left: 40px;">OS Release: < Solaris OS ></p> <p style="padding-left: 40px;">COMPONENT GROUP: < COMPONENT GROUP ></p> <p>Do you want to continue with this installation? [yes or no ?]:</p>
Meaning	<p>Packages included in Enhanced Support Facility existed when the -O option of the esfadd command is entered. Enhanced Support Facility (FJSVbse package) does not exist, therefore, install Enhanced Support Facility after removing the displayed packages.</p>
Workaround	<p>Please enter "no" to exit, and after executing "esfadd -c" to confirm the package version number you are going to update, install Enhanced Support Facility.</p>

B.1.2 Warning Messages

In this chapter, warning messages of the `esfadd(1M)` command are explained.

Message	<pre>Enhanced Support Facility < VERSION > will be installed. Platform: < PLATFORM > OS Release: < Solaris OS > COMPONENT GROUP: < COMPONENT GROUP > NOTE: The following package(s) not included in the specified component group is installed. < PACKAGENAME1 > < PACKAGENAME2 > Do you want to continue with this installation? [yes or no ?]:</pre>
Meaning	If "CORE" or "BASIC" is specified as the -O option of the <code>esfadd</code> command, a caution message is output when some packages are already installed.
Workaround	Please enter "no" to terminate the installation and confirm the system environment. For more information, please see "6.4.3 Specifying a component group for installation".

Message	<pre>NOTE: -R option Do you want to continue with this installation? [yes or no ?]:</pre>
Meaning	When you install Enhanced Support Facility newly by using the -R option e.g.Solaris LiveUpgrade or remote application, the above message is displayed.
Workaround	Please enter either "yes" or "no".

B.1.3 Error Messages

In this chapter, error messages of the `esfadd(1M)` command are explained.

Message	<code>esfadd: INFO: Enhanced Support Facility is already installed.</code> <code>esfadd: ERROR: Update installation with -O option is not supported.</code>
Meaning	The <code>-O</code> option (component group) is specified when Enhanced Support Facility is already installed. Changing a component group for update installation and current Enhanced Support Facility installation is not allowed.
Workaround	Please do not specify the <code>-O</code> option (component group), or specify it after removing the installed Enhanced Support Facility.

Message	<code>ERROR: Please enter yes or no.</code>
Meaning	Displayed when you enter any value other than "yes" or "no" in the dialog when you install Enhanced Support Facility.
Workaround	Please enter either "yes" or "no".

Message	<code>esfadd: ERROR: The source directory does not exist.</code>
Meaning	Package storage directory specified by " <code>esfadd -d</code> " does not exist.
Workaround	Specify the correct package storage directory.

Message	<code>esfadd: ERROR: The specified source directory is incorrect.</code>
Meaning	Package storage directory specified by " <code>esfadd -d</code> " does not exist.
Workaround	Specify the correct package storage directory.

Message	<code>esfadd: ERROR: Removal of packages failed.</code>
Meaning	Removal of packages you are going to update failed at the time of update installation.
Workaround	Please check the error code of the package you failed to remove.

Message	<code>esfadd: ERROR: Installation of packages failed.</code>
Meaning	Installation of packages failed at the time of installation.
Workaround	Please confirm the error code of the package you failed to remove.

Message	<code>esfadd: ERROR: This Hardware Platform is not supported.</code>
Meaning	The hardware platform is not supported.
Workaround	For supported hardware platform, please see "Appendix C Component Programs by Model".

Message	<code>esfadd: ERROR: The OS release of this system is not supported.</code>
Meaning	The OS of this system is not supported.
Workaround	For OS of the supported system, please see "Appendix C Component Programs by Model".

Message	esfadd: ERROR: Mountpoint does not exist.
Meaning	A mount point specified by "esfadd -R" does not exist.
Workaround	Specify the correct mount point with absolute path.

Message	esfadd: ERROR: Mountpoint must be specified with a absolute path.
Meaning	A mount point specified by "esfadd -R" is not specified with absolute path (whose head is '/').
Workaround	Specify the correct mount point with absolute path.

Message	esfadd: ERROR: Failed to install. The following old ESF packages already exists in < MOUNTPOINT >.
Meaning	Packages included in Enhanced Support Facility exist in the directory specified as a mount point.
Workaround	After removing the Enhanced Support Facility packages in the mount point, please re-execute the command.

Message	esfadd: ERROR: Failed to install. The ESF product already exists in < MOUNTPOINT >.
Meaning	Enhanced Support Facility (FJSVbse package) exist in the directory specified as a mount point.
Workaround	After removing Enhanced Support Facility in the mount point, please re-execute the command.

Message	esfadd: ERROR: Can not obtain COMPONENT GROUP < COMPONENT GROUP >.
Meaning	Displayed when a component group other than "FULL","BASIC","CORE" was entered.
Workaround	Please specify FULL, BASIC, or CORE as a component group, and execute the command. For supported component group, please see "6.4.2 Component groups".

Message	esfadd: ERROR: Two or more instances of the following package(s) are existing on the system. < PKGNAME > < PKGNAME.2 > Exit installation.
Meaning	Displayed when two or more instances of the displayed packages exist on the system.
Workaround	Remove the packages having the problem. Please remove the packages by seeing "D.1.1 Resolution of problems which occur when package is installed (I)".

Message	esfadd: ERROR: The directory (/opt) where the packages will be installed does not exist. Do you want to continue with this installation? [yes or no ?]:
Meaning	The /opt directory dose not exist.(is not mounted.) This message is output when the command is executed without mounting /opt when the system is started in single user mode.
Workaround	In single user mode, /opt is not mounted. Therefore, please see "5.2.3 Instructions" to mount /opt.

Message	<p>esfadd: ERROR: The directory (/opt) where the packages will be installed does not exist.</p> <p>Interrupt installation and mount the /opt.</p> <p>Select (n) no to stop installation.</p> <p>Select (y) yes to continue to install. [yes or no ?]:</p>
Meaning	<p>The /opt directory dose not exist.(is not mounted.)</p> <p>This message is output when the command is executed without mounting /opt when the system is started in single user mode.</p>
Workaround	In single user mode, /opt is not mounted. Therefore, please see "5.2.3 Instructions" to mount /opt.

Message	esfadd:ERROR: Partially installed package(s) was found. See the Installation Guide and remove the following package(s).
Meaning	Partially installed packages was found.
Workaround	Please remove the packages displayed following the message.

Message	esfadd: ERROR: use permission of cron was not set up.(root,adm) was not set up.
Meaning	Displayed when the root and adm users are set not to be able to use cron. This message is displayed when Oracle VM Server for SPARC/Logical Domains (LDoms) is installed prior to Enhanced Support Facility.
Workaround	For cron, please see "D.1.4 Resolution of problems which occur when package is installed (IV)" to do necessary procedure.

Message	esfadd: ERROR: The vfstab file is not found.
Meaning	The vfstab file does not exist.
Workaround	After making /etc/vfstab, please reinstall Enhanced Support Facility.

Message	esfadd: ERROR: Stop of DMPSV service failed.
Meaning	When Dump Assistant Package is removed (for update), stop of SMF service provided by Dump Assistant failed.
Workaround	Please check the state of DMPSV.

B.2 esfrm(1M)

In this chapter, the meaning of messages displayed when the esfrm (1M) command is executed, and what action you can take when the messages are displayed are explained. Please refer to "A.2 esfrm (1M) " about the details of the esfrm (1M) command.

B.2.1 Notice Messages

In this chapter, notice messages of the esfrm (1M) command are explained.

<p>Message</p>	<pre>Enhanced Support Facility <VERSION> will be removed. FJSVbse Enhanced Support Facility Information Management (sparc) < VERSION >,REV=< REVISION > : : < PKGNAME > < VERSION >,REV=< REVISION > There is a possibility to cause problem in the system when the packages where "*" adheres to the head of the package name is deleted. Please input "all" when you want to remove all packages,input "no" when you want to interrupt the uninstallation, or input "part" when you want to remove only packages where "*" does not adhere. Please select. [no,all or part]:</pre>
<p>Meaning</p>	<p>Displayed when the esfrm command is entered and Enhanced Support Facility is removed.</p>
<p>Workaround</p>	<p>If there is a package having "*" at the head of its name, enter "part". Such a package is installed from a product other than Enhanced Support Facility.</p> <p>For more information, please see "5.4.2 Removal of Software".</p>

<p>Message</p>	<pre>Enhanced Support Facility <VERSION> will be removed. COMPONENT-GROUP:<COMPONENT-GROUP> FJSVbse Enhanced Support Facility Information Management (sparc) < VERSION >,REV=< REVISION > : : < PKGNAME > < VERSION >,REV=< REVISION > There is a possibility to cause problem in the system when the packages where "*" adheres to the head of the package name is deleted. Please input "all" when you want to remove all packages,input "no" when you want to interrupt the uninstallation, or input "part" when you want to remove only packages where "*" does not adhere.</pre>
----------------	---

	Please select. [no,all or part]:
Meaning	Displayed when the esfrm command is entered and Enhanced Support Facility is removed. Displayed when the -O component group was specified when Enhanced Support Facility was installed.
Workaround	If there is a package having "*" at the head of its name, enter "part". Such a package is installed from a product other than Enhanced Support Facility. For more information, please see " 5.4.2 Removal of Software".

Message	Do you want to continue with uninstallation?[yes of no ?]: Uninstallation of Enhanced Support Facility was terminated.
Meaning	Displayed when the removal of packages failed and you do not continue the removal. Uninstallation of Enhanced Support Facility is not completed.
Workaround	None.

Message	*Important confirmation* When some ESF packages which can not support to Remote Install exist in < MOUNTPOINT > > there is a possibility that not only the installation target system but also the system operating now may be destroyed. You should delete those packages from < MOUNTPOINT > according to the INSTALLATION GUIDE. Have you referred to the INSTALLATION GUIDE and confirmed the package versions [yes or no ?]:
Meaning	Displayed when packages are removed with the esfrm -R mount point.
Workaround	Please check the version of Enhanced Support Facility. Please remove the packages by using the same version DVD/CD as the installed Enhanced Support Facility.

Message	Solaris Live Upgrade can not be used to upgrade from Enhanced Support Facility 2.3 or earlier. Certain Enhanced Support Facility 2.3 or earlier packages may not support remote un-installation (esfrm -R), and may cause damage to the system during un-installation. Do not proceed with removal of Enhanced Support Facility if revision 2.3 or earlier is installed. Do you want to continue with the removal of Enhanced Support Facility from the alternate boot environment? [yes or no?]:
Meaning	Displayed when you remove Enhanced Support Facility with the esfrm -R mount point
Workaround	Please check the version of Enhanced Support Facility. If you are not using the same version DVD/CD as the installed Enhanced Support Facility, please enter "no" to exit.

B.2.2 Warning Messages

No messages are displayed when the `esfrm(1M)` command is executed.

B.2.3 Error Messages

In this chapter, error messages of the esfrm (1M) command are explained.

Message	ERROR: Please enter no,all or part.
Meaning	Displayed when any value other than "no", "all","part" is entered in a dialog when Enhanced Support Facility is removed.
Workaround	Please enter "no","all",or "part".

Message	Do you want to continue with uninstallation?[yes of no ?]:
Meaning	Displayed during a dialog when Enhanced Support Facility is removed, and you are required to select continuing or cancelling the installation after failing the removal of packages.
Workaround	Please enter either "yes" or "no".

Message	ERROR: Please enter yes or no.
Meaning	Displayed when any value other than "yes", "no" is entered in a dialog when you remove Enhanced Support Facility.
Workaround	Please enter either "yes" or "no".

Message	esfrm: ERROR: Mountpoint does not exist.
Meaning	A mount point specified by "esfrm -R" does not exist.
Workaround	Specify the correct mount point with absolute path.

Message	esfrm: ERROR: Mountpoint must be specified with a absolute path.
Meaning	A mount point specified by "esfrm -R" is not specified with absolute path(whose head is '/').
Workaround	Specify the correct mount point with absolute path.

Message	esfrm: ERROR: The OS release of this system is not supported.
Meaning	The OS of this system is not supported.
Workaround	For OS the supported system, please see "Appendix C Component Programs by Model". Please remove Enhanced Support Facility by using the same version DVD/CD as the installed Enhanced Support Facility.

Message	esfrm: ERROR: Fail for deleting.
Meaning	Displayed then Enhanced Support Facility is not installed.
Workaround	The command was executed for a machine where Enhanced Support Facility is not installed. This command is a command to remove Enhanced Support Facility.

Message	esfrm: ERROR: Two or more instances of the following package(s) are existing on the system. < PKGNAME > < PKGNAME.2 > Exit installation.
Meaning	Displayed when two or more instances of the displayed packages exist on the system.
Workaround	Remove the packages having the problem. Please see "D.2.1 Resolution of problems, which occurred when package was removed (I)".

Message	Removal of < PACKAGENAME > failed. esfrm: ERROR: Failed to remove a < PACKAGENAME > package.
Meaning	Removal of a package failed when Enhanced Support Facility is uninstalled.
Workaround	Please check the error code of the package you failed to remove.

B.3 esfver(1M)

In this chapter, the meaning of messages displayed when the `esfver (1M)` command is executed, and what action you can take when the messages are displayed are explained. Please refer to "A.3 `esfver (1M)`" about the details of the `esfver (1M)` command.

B.3.1 Notice Messages

In this chapter, notice messages of the `esfver (1M)` command are explained.

Message	<pre>esfver: INFO: Integrated Version of already installed Enhanced Support Facility. VERSION=<VERSION> REVISION=<REVISION> ESF_PATCH_VERSION = <PATCH_VERSION></pre>
Meaning	The <code>esfver</code> command is entered and integrated version of Enhanced Support Facility is displayed.
Workaround	None.

Message	<pre>esfver: INFO: Individual Packages Version of already installed Enhanced Support Facility. PKGNAME VERSION REVISION ----- FJSVbse <VERSION> <REVISION> : : ----- ESF_PATCH_VERSION = <PATCH_VERSION></pre>
Meaning	The <code>-l</code> option of the <code>esfver</code> command is entered and each package version of Enhanced Support Facility is displayed.
Workaround	None.

Message	<pre>esfver: INFO: Integrated Version of already installed Enhanced Support Facility. COMPONENT-GROUP:< COMPONENT GROUP > VERSION=<VERSION> REVISION=<REVISION> ESF_PATCH_VERSION = <PATCH_VERSION></pre>
Meaning	The <code>esfver</code> command is entered and integrated version of Enhanced Support Facility is displayed. <code>COMPONENT-GROUP</code> is displayed when you install Enhanced Support Facility by specifying <code>-O</code> component group.
Workaround	None.

Message	<pre> esfver: INFO: Individual Packages Version of already installed Enhanced Support Facility. COMPONENT-GROUP:< COMPONENT GROUP > PKGNAME VERSION REVISION ----- FJSVbse <VERSION> <REVISION> : : ----- ESF_PATCH_VERSION = <PATCH_VERSION> </pre>
Meaning	<p>The -l option of the esfver command is entered and each package version of Enhanced Support Facility is displayed.</p> <p>COMPONENT-GROUP is displayed when you install Enhanced Support Facility by specifying -O component group.</p>
Workaround	<p>None.</p>

B.3.2 Warning Messages

In this chapter, warning messages of the `esfver (1M)` command are explained.

Message	<code>esfver: INFO: This software is not installed on the system.</code>
Meaning	Enhanced Support Facility (FJSVbse package) is not installed. The command was executed for the machine where Enhanced Support Facility is not installed. This is a command to check the version of Enhanced Support Facility and included packages and their versions.
Workaround	None.

Message	<code>-- WARNING --</code> Two or more instances of the following packages have been installed on the system.
Meaning	Displayed when two or more instances exist in the system. One possible reason for this is that a package provided another middle ware exists.
Workaround	None.

Message	Fail to get information of <Package>. ----- ESF PATCH_VERSION = <PATCH_VERSION>
Meaning	Packages which have not been installed from Enhanced Support Facility are displayed. A list of non-existing packages following a list of existing packages is displayed.
Workaround	None.

B.3.3 Error Messages

In this chapter, error messages of the `esfver (1M)` command are explained.

Message	<code>esfver: ERROR: mountpoint does not exist.</code>
Meaning	A mount point specified by " <code>esfver -R</code> " does not exist.
Workaround	Specify the correct mount point with absolute path.

Message	<code>esfver: ERROR: mountpoint must be specified with a absolute path.</code>
Meaning	A mount point specified by " <code>esfver -R</code> " is not specified with absolute path "whose head is '/)".
Workaround	Specify the correct mount point with absolute path.

Message	<code>esfver: ERROR: Partially installed package(s) was found. See the Installation Guide and remove the following package(s).</code>
Meaning	Partially installed packages was found.
Workaround	Remove packages displayed following the message.

B.4 esfpachadd(1M)

In this chapter, the meaning of messages displayed when the esfpachadd (1M)command is executed, and what action you can take when the messages are displayed are explained. Please refer to "A.4 esfpachadd (1M) " about the details of the esfpachadd (1M) command.

B.4.1 Notice Messages

In this chapter, notice messages of the esfpachadd (1M) command are explained.

Message	Enhanced Support Facility <VERSION> correction patches will be applied. Platform: < PLATFORM > OS Release: < Solaris OS > Do you want to continue with this installation? [yes or no ?]:
Meaning	Displayed when the esfpachadd command is entered and the application of a patch is started.
Workaround	Please enter either "yes" or "no".

Message	Enhanced Support Facility < VERSION > correction patches will be applied. Source Directory: < MOUNTPOINT >/Platform/< PLATFORM >/< Solaris OS > Platform: <PLATFORM > OS Release: < Solaris OS > Do you want to continue with this installation? [yes or no ?]:
Meaning	Displayed when the -d option of the esfpachadd command is entered correctly and the application of a patch is started.
Workaround	Please enter either "yes" or "no".

Message	Enhanced Support Facility < VERSION > correction patches will be applied. INSTALL-ROOT: < MOUNTPOINT > Platform: < PLATFORM > OS Release: < Solaris OS > Do you want to continue with this installation? [yes or no ?]:
Meaning	Displayed when the -R option of the esfpachadd command is entered correctly and the application of a patch is started.
Workaround	Please enter either "yes" or "no".

Message	esfpachadd: INFO: There is no patch for this system.
Meaning	This message is output when there is no patch for Enhanced Support Facility.
Workaround	None.

Message	<pre>---- esfpatchadd result. ---- Applied patches: < PATCH-ID > < PATCH-ID > < PATCH-ID > esfpatchadd: INFO: None of the patch was applied on this system. Patches not applied: < PATCH-ID > < PATCH-ID > < PATCH-ID > Patches actually applied are different according to the Model and the installed component.</pre>
Meaning	<p>The status of application for patch is displayed.</p> <p>Some patches are not applied by a combination of the installed component group and the type of the device. (The displayed message includes patches you could not apply because the patches have already been applied.)</p>
Workaround	None.

Message	Patches actually applied are different according to the Model and the installed component.
Meaning	This message means some patches failed to be applied because they have already been applied.
Workaround	None.

Message	Applying < PATCH-ID >
Meaning	Displayed when the patch application is in process.
Workaround	None.

Message	< PATCH-ID > was successfully applied.
Meaning	Displayed when a patch was applied while the patch application was in process.
Workaround	None.

Message	< PATCH-ID > was not applied.
Meaning	Displayed when a patch failed to be applied because the patch has already been applied.
Workaround	None.

B.4.2 Warning Messages

No messages are displayed when the `esfpatchadd(1M)` command is executed.

B.4.3 Error Messages

In this chapter, error messages of the `esfpatchadd (1M)` command are explained.

Message	Enhanced Support Facility < VERSION > is not installed.
Meaning	Displayed when the version of Enhanced Support Facility is wrong.
Workaround	Please apply a patch by using the same version DVD/CD as the installed Enhanced Support Facility.

Message	<code>esfpatchadd: ERROR: The source directory does not exist.</code>
Meaning	Patch storage directory specified by " <code>esfpatchadd -d</code> " does not exist.
Workaround	Specify the correct patch storage directory.

Message	<code>esfpatchadd: ERROR: Mountpoint does not exist.</code>
Meaning	The mount point specified by " <code>esfpatchadd -R</code> " does not exist.
Workaround	Specify the correct mount point with absolute path.

Message	<code>esfpatchadd: ERROR: Mountpoint must be specified with a absolute path.</code>
Meaning	The mount point specified by " <code>esfpatchadd -R</code> " is not specified with absolute path (whose head character is '/').
Workaround	Specify the correct mount point with absolute path.

Message	<code>esfpatchadd: ERROR: This software cannot be installed in non-global zone.</code>
Meaning	Displayed when <code>esfpatchadd</code> is executed in the non-global zone.
Workaround	Please execute <code>esfpatchadd</code> in the global zone.

Message	<p><code>esfpatchadd: ERROR: The directory (/opt) where the patches will be installed does not exist.</code></p> <p>The /opt mount by interrupting installation.</p> <p>Select (n) no stop install.</p> <p>Select (y) yes continue to install. [yes or no ?]:</p>
Meaning	<p>The /opt directory does not exist (is not mounted).</p> <p>This message is output when the command is executed without mounting /opt when the system is started in single user mode.</p>
Workaround	In single user mode, /opt is not mounted, therefore please see "5.2.3 Instructions" to mount /opt.

Message	<code>esfpatchadd: ERROR: The vfstab file is not found.</code>
Meaning	The vfstab file does not exist.
Workaround	After making "/etc/vfstab", please reinstall Enhanced Support Facility.

Message	<code>esfpatchadd: ERROR: This Hardware Platform is not supported.</code>
Meaning	The hardware platform is not supported.
Workaround	For supported hardware platform, please see "Appendix C Component Programs by Model".

Message	esfpatchadd: ERROR: The OS release of this system is not supported.
Meaning	The OS of this system is not supported.
Workaround	For OS of the supported system, please see "Appendix C Component Programs by Model".

Message	esfpatchadd: ERROR: The specified source directory is incorrect.
Meaning	The directory for storage of patches specified by "esfpatchadd -d " does not exist.
Workaround	Specify the correct patch storage directory.

Message	ERROR: Please enter yes or no.
Meaning	Displayed when any value other than "yes" and "no" is entered in a dialog when Enhanced Support Facility patches are applied.
Workaround	Please enter either "yes" or "no".

Appendix C Component Programs by Model

Abbreviated names of machine models are used in the table below. For more information, please refer to "Notations Used" in "Preface".

Component group

C: CORE

B: BASIC

F: FULL

O: Supported, -: Not supported

Table C -1 Component Programs List

No.	Component	Package name	VL	Abbreviation		Component group		
				CW	LE	C	B	F
1	Enhanced Support Facility Information Management	FJSVbse	3.2	O	O	O	O	O
2	IKPDR Command	FJSVdropl	1.0	O	-	O	O	O
3	SCF/SCSI Fault LED support option	FJSVscfsc	1.0	O	-	O	O	O
4	Machine Administration	FJSVmadm	1.2.3	-	O	O	O	O
		FJSVamadm	1.0.0	O	-	O	O	O
		FJSVamcl	1.0.0	O	-	O	O	O
		FJSVamle	1.0.0	-	O	O	O	O
5	Remote Support	FJSVamrm	1.0	O	-	O	O	O
		FJSVlrm	1.0	-	O	O	O	O
		FJSVrlib	8.2.2	-	O	O	O	O
		FJSVragt	2.9	-	O	O	O	O
		FJSVrmaos	2.9	-	O	O	O	O
		FJSVrrda	2.9	-	O	O	O	O
		FJSVracm	2.9	-	O	O	O	O
FJSVsirms	4.0	O	O	O	O	O		
6	Auto Power Control System	FJSVapcs	1.4.2	O	-	-	O	O
7	Server Default Configuration	FJSVdef	1.4	O	O	O	O	O
		FJSVssf	3.0.1	O	O	O	O	O
8	System Data Output Tool	FJSVsnap	2.6	O	O	O	O	O
9	Crash Dump Assistant	FJSVdmp	1.6	O	O	O	O	O
10	Auto Dump Analyze Tool	FJSVana	2.1	O	O	O	O	O
11	System Parameter Diagnosis	FJSVparam	1.1	O	O	O	O	O
12	HRM-S	FJSVhrmse	3.5.9	O *1	O *1	-	-	O *1
13	Tape Driver Configuration Tool	FJSVdenf	1.2	O	O	O	O	O
14	Patch Information Collect Command	FJSVpmgc	1.1	O	O	O	O	O
15	Console flow control canceller	FJSVcflw	1.0	O	O	O	O	O

No.	Component	Package name	VL	Abbreviation		Component group		
				CW	LE	C	B	F
16	UpdateAdvisor (Solaris OS)	FJSVupdta	1.7	O *1	O *1	O *1	O *1	O *1

*1:Package is installed, but not supported.

Appendix D Troubleshooting

D.1 Resolution of problems which occur when package is installed

Case1

Refer to Appendix D.1.1 when the following messages are displayed while installing.

```
esfadd: ERROR: Two or more instances of the following package(s) are existing on the
system.
package_name package_name.2

Exit installation.
```

Case2

Refer to Appendix D.1.2 when the following messages are displayed while installing.

```
A version of the <pkginst> package is already installed on this machine.
Current administration ds not allow new instances of an existing package to be created,
nor existing instances to be overwritten.

No changes were made to the system.
esfadd: ERROR: Installation of packages failed.
```

Case3

Refer to Appendix D.1.3 when the following messages are displayed while installing.

```
# esfadd<Return>
:
:
Installation of <pkginst> failed (error).
esfadd: ERROR:Installation of packages failed.
```

Case4

Refer to Appendix D.1.4 when the following messages are displayed while installing.

```
#esfadd
:
esfadd: Error: Use of cron is not permitted. root and adm users have not been set up.
```

Case5

Refer to Appendix D.1.5 when the following messages are displayed while deleting the package.

```
# esfadd<Return>
:
:
Removed of <pkginst> failed.
esfadd:ERROR:Removal of packages failed.
```

D.1.1 Resolution of problems which occur when package is installed (I).

If the following message is displayed during installation, and the installation terminates abnormally, use the following solution.

```
esfadd: ERROR: Two or more instances of the following package(s) are existing on the
system.
package_name package_name.2

Exit installation.
```

Problem Cause

This message will be displayed when multiple instances of a particular package have already been installed on this system. Please execute the following procedures as the corrective action.

Solution

- 1) If an environment setting file exists for the package where the problem occurred, save the environment setting file.
(Refer to Section 5.3.4, "Saving the environment setting file".)

- 2) Check the version of the package where the problem occurred.

```
# pkginfo -x package_name.* <Return>
```

- 3) Remove all packages where the problem has occurred.

```
# pkgrm package_name.* <Return>
```

- 4) If the version of the problem package is later than that provided in the software, install the later version of the package.
- 5) Go on to the procedures in Section 5.3.5, "Instructions".
- 6) Restore the previously saved environment setting file, using the procedures in Section 5.3.7, "Restoring the environment settings file".

D.1.2 Resolution of problems which occur when package is installed (II).

If the following message is displayed during installation, and the installation terminates abnormally, use the following solution.

```
A version of the <pkginst> package is already installed on this machine.  
Current administration ds not allow new instances of an existing package to be created,  
nor existing instances to be overwritten.  
  
No changes were made to the system.  
  
esfadd: ERROR: Installation of packages failed.
```

Problem Cause

This message will be displayed when the <pkginst> package installation fails. In particular, this message will be displayed when multiple instances of the <pkginst> package have already been installed on the system.

Execute the following procedure as the correction action.

Attention: Depending on the state of the system, this message might be displayed in addition to other display causes.

Therefore, you need to confirm whether there are other abnormalities, before proceeding.

Solution

- 1) If an environment setting file exists for the package where the problem occurred, save the environment setting file.
(Refer to Section 5.3.4, "Saving the environment setting file" for details.)

- 2) Check the version of the package where the problem occurred.

```
# pkginfo -x package_name.* <Return>
```

- 3) Remove all of the packages where problems occurred.

```
# pkgrm package_name.* <Return>
```

- 4) Remove the FJSVbse package.

```
# pkgrm FJSVbse <Return>
```

- 5) If the version of the problem package is later than the one provided in the software, install the later version of the package.
- 6) Go on to the procedures in Section 5.3.5, "Instructions".
- 7) Restore the previously saved environment setting file, using the procedures in Section 5.3.7, "Restoring the environment settings file".

D.1.3 Resolution of problems which occur when package is installed (III).

If the following message is displayed during installation, and the installation terminates abnormally, use the following solution.

```
# esfadd<Return>
:
:
Installation of <pkginst> failed (error).
esfadd: ERROR:Installation of packages failed.
```

Problem Causes

This message will be displayed when the <pkginst> package installation fails. In particular, the message will be displayed if the software was installed under the following situations.

- 1) Lack of disk space (Refer to Section 3.3.1, "Disk requirements").
- 2) If using NFS to mount the DVD/CD drive on the system prior software installation, the options on the NFS mount are not appropriately specified.
- 3) The operator has executed procedures other than those described in the Installation Guide.

Attention: Depending on the state of the system, this message might be displayed for other reasons than those mentioned above. Therefore, you need to confirm whether there are other abnormalities before proceeding.

Solution

- 1) If an environment setting file exists for the package where the problem occurred, save the environment setting file.
(Refer to Section 5.3.4, "Saving the environment setting file" for details.)

- 2) Remove package where problem occurred.

```
# pkgrm package_name <Return>
```

- 3) Remove the FJSVbse package.

```
# pkgrm FJSVbse <Return>
```

- 4) Go on to the procedures in Section 5.3.5, "Instructions".

- 5) Restore the previously saved environment setting file, using the procedures in Section 5.3.7, "Restoring the environment settings file".

Attention:

Even if the FJSVbse package is removed according to procedure3, the /opt/FJSVbse directory might not be deleted. However, this will not cause any operational problems.

D.1.4 Resolution of problems which occur when package is installed (IV).

If the following message is displayed during installation, and the installation terminates abnormally, use the following solution.

```
#esfadd
:
esfadd: ERROR: use permission of cron was not set up.(root,adm) was not set up.
```

Problem Causes

This message is displayed when root user and adm user are not allowed to use cron on your system.

Attention: If you have installed the Logical Domains Manager prior to this software, this message is displayed. This is because the Solaris Security Toolkit included in the Logical Domains Manager changes the cron settings.

Solution

Before installing this software, set up the root and adm users so they can use cron.

Please take the steps below if you have installed the Logical Domains Manager prior to this software.

- 1) Copy the `/etc/cron.d/cron.allow` file before changing the cron settings.
- 2) Add root user and adm user to the `/etc/cron.d/cron.allow` file.
- 3) Install this software.
- 4) Restore the `/etc/cron.d/cron.allow` file you copied.

D.1.5 Resolution of problems which occur when package is installed (V).

If the following message is displayed during package removal, and the removal terminates abnormally, use the following solution.

```
# esfadd<Return>
:
:
Removed of <pkginst> failed.
esfadd:ERROR:Removal of packages failed.
```

Problem Causes

This message will be displayed when the <pkginst> package removal fails. In particular, this message will be displayed if:

1. The <pkginst> package has dependence with other package(s).
2. The installed package instance has broken.
3. The operator executed procedures other than those described in the Installation Guide.

Attention: Depending on the state of the system, this message might be displayed in addition to others. Therefore, you need to confirm whether there are other abnormalities before proceeding.

Solution

- 1) If an environment setting file exists for the package where the problem occurred, save the environment setting file.
(Refer to Section 5.3.4, "Saving the environment setting file" for details.)

- 2) Remove package where problem occurred.

```
# pkgrm package_name <Return>
```

- 3) Remove the FJSVbse package.

```
# pkgrm FJSVbse <Return>
```

- 4) Go on to the procedures in Section 5.3.5, "Instructions".

- 5) Restore the previously saved environment setting file, using the procedures in Section 5.3.7, "Restoring the environment settings file".

Attention:

Even if the FJSVbse package is removed according to procedure3, the /opt/FJSVbse directory might not be deleted. However, this will not cause any operational problems.

D.2 Resolution of problems which occur when package was removed

Case1

Refer to Appendix D.2.1 when the following messages are displayed while deleting the package.

```
esfrm: ERROR: Two or more instances of the following package(s) are existing on the system.  
package_name package_name.2  
  
Exit installation.
```

Case2

Refer to Appendix D.2.2 when the following messages are displayed while deleting the package.

```
svc:/system/fjsvdmpsnap:default remains enabled; aborting  
pkgrm: ERROR: class action script did not complete successfully  
  
Removal of <FJSVdmp> failed.  
  
esfrm: ERROR: Failed to remove a FJSVdmp package.
```

D.2.1 Resolution of problems, which occurred when package was removed (I).

If the following message is displayed during software removal, and the remove terminates abnormally, use the following solution.

```
esfrm: ERROR: Two or more instances of the following package(s) are existing on the system.  
package_name package_name.2  
  
Exit installation.
```

Problem Cause

This message will be displayed if multiple instances of a particular package have been installed on the system. Please execute the following procedures as the corrective action.

Solution

- 1) Remove package where problem occurred.

```
# pkgrm package_name.* <Return>
```

- 2) Go on to step 8 provided in Section 5.4.2, "Removal of Software".

D.2.2 Resolution of problems, which occurred when package was removed (II).

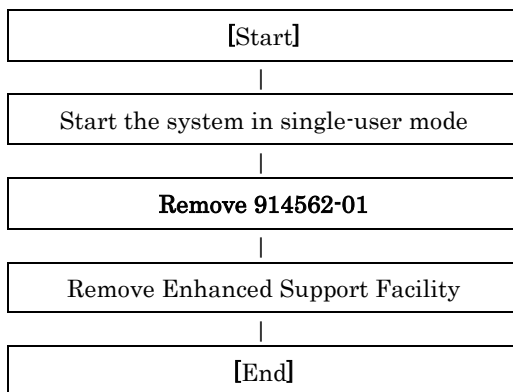
If you execute 'esfrm' on Solaris 10 OS with Patch 914562-01 installed, the removal of Enhanced Support Facility fails.

```
svc:/system/fjsvdmpsnap:default remains enabled; aborting
pkgm: ERROR: class action script did not complete successfully

Removal of <FJSVdmp> failed.

esfrm: ERROR: Failed to remove a FJSVdmp package.
```

Please follow the steps below when you remove Enhanced Support Facility.



Problem Causes

These messages are displayed when you try to remove this product while a service provided by the Crash Dump Assistant is running.

Solution

If you performed the removal of Enhanced Support Facility without removing Patch 914562-01 and failed, please follow the steps below for recovery.

- 1) Stop services provided by the Crash Dump Assistant package.

```
# svcadm disable svc:/system/fjsvdmpsnap:default <Return>
# svcadm disable svc:/system/fjsvdmpadm:default <Return>
```

- 2) Confirm the services are not running.

[Example of execution]

```
# svcs -a | grep svc:/system/fjsvdmp <Return>
disabled          22:10:46  svc:/system/fjsvdmpsnap:default
disabled          22:10:47  svc:/system/fjsvdmpadm:default
```

- 3) Re-execute the removal command (esfrm) of Enhanced Support Facility.

```
# cd /cdrom/cdrom0 <Return>
# bin/esfrm <Return>
```

D.3 When the patches fail to be applied

See the README in the patch directory for patch information.

1) The following messages will be displayed when applying of the patch was failed.

a. when no applicable packages exist

(xxxxxx-xx is patch ID)

```
One or more patch packages included in
xxxxxx-xx are not installed on this system.
WARNING: Skipping patch xxxxxx-xx
```

or

```
None of the packages included in patch xxxxxx-xx
are installed on this system.
WARNING: Skipping patch xxxxxx-xx
```

If these messages are displayed, packages that would be corrected by the patch have not been installed on the system. Please check the environment of the system.

If you installed the software by specifying a component group that excluded the package being corrected, this message will be displayed. but in that case, there is no problem.

b. when the patch has already been applied

```
Patch xxxxxx-xx has already been applied.
See patchadd(1M) for instructions.
WARNING: Skipping patch xxxxxx-xx
```

If this message is displayed, the patch has already been applied to the system.

If you are doing an update installation of this software, this is not a problem

2) Execute the following procedures to apply the patch again

2-1) Remove the FJSVbse package.

```
# pkgrm FJSVbse <Return>
```

2-2) Go on to the procedures in Section 5.2.3, "Instructions".

Appendix E Notes

E.1 Solaris network installation using DHCP service

If network installation is performed using DHCP service, the system behaves as a DHCP client. In the case of SPARC Enterprise T series, Enhanced Support Facility should be installed after the system is configured to use a static IP address.

If Enhanced Support Facility is installed while the system is running as a DHCP client, the following symptoms may occur.

- Remote Support

Influence: When using the following connection type, reporting can not be performed.

- 1) Point-to-Point (PtoP) Connection (ISDN)
- 2) Point-to-Point (PtoP) Connection (ISDN: Mail Only)

Recommended action: After configuring the system to use a static IP address, please request a service engineer to change the setting of the router for REMCS PtoP (ISDN) connection.

Appendix F Mounting the DVD/CD

F.1 Using a built-in DVD/CD drive

Machines other than SPARC Enterprise T1000 are equipped with main unit internal DVD/CD.

If you use internal DVD/CD drive allocated to a domain of SPARC Enterprise T series (except T1000), or SPARC Enterprise M series, you can mount a DVD/CD by the following procedure.

Regarding allocation of DVD/CD drive to a domain, please refer to "SPARC Enterprise Mxxxx series Server Administration Guide" by visiting the following URL.

<http://www.fujitsu.com/sparcenterprise/manual/>

- 1) Stop Volume Manager.

```
# etc/init.d/volmgt stop <Return>
```

- 2) Create the mount destination directory of a DVD/CD.

However, if the directory already exists, you don't have to create it.

```
# mkdir -p /cdrom/cdrom0 <Return>
```

- 3) Mount the DVD/CD. Specify a DVD/CD drive for <DEVICE>.

```
# /usr/sbin/mount -F hsfs /dev/dsk/<DEVICE> /cdrom/cdrom0 <Return>
```

- 4) Move to the directory of the DVD/CD.

```
# cd /cdrom/cdrom0 <Return>
```

The DVD/CD becomes visible after completing the above steps.

F.2 Mounting a DVD/CD of an installation server

Please follow these steps to mount the DVD/CD inserted into a DVD/CD drive of the installation server.

1) Setting of an installation server

Add the following line to the `/etc/rmmount.conf` file in the install server.

```
share cdrom* -o ro,anon=0
```

2) Setting of a target machine of the installation

2-1) Activate the network.

```
# svcadm enable /network/initial <Return>
```

2-2) Mount a DVD/CD.

```
# mkdir -p /cdrom <Return>
# /usr/sbin/mount -F nfs -o ro,vers=2 host:/cdrom/cdrom0 /cdrom <Return>
```

The "*host*" represents the host name of an installation server.

2-3) Move to the directory of the DVD/CD.

```
# cd /cdrom <Return>
```